

Job Name

Purchaser

Submitted to

Unit Designation

Location

Engineer

ReferenceApprovalConstruction

Schedule #

Specifications

Model	Indoor Unit Model Number (US Code)		AC036BNTDCH/AA (CNH36TDB)
	Outdoor Unit Model Number (US Code)		AC036BXADCH/AA (CXH36ADB)
Performance	Nominal Capacity	Cooling / Heating (Btu/h)	36,000 / 40,000
	Capacity Range	Cooling (Btu/h)	11,000 - 39,000
		Heating (Btu/h)	9,500 - 47,000
	AHRI 210-240 2017 ¹	SEER	18.6
		EER	9.5
		HSPF	10.10
	AHRI 210-240 2023 ²	SEER2	19.2
		EER2	9.5
HSPF2		8.5	
Power	Voltage	ø / V / Hz	1 / 208-230 / 60
	Working Voltage Range (VAC)		187 - 253
	Operating Current (min. / std. / max.)	Cooling (A)	5.0 / 16.8 / 19.1
		Heating (A)	3.0 / 20.0 / 24.0
	Max. Breaker	Amps	35
Min. Circuit Ampacity (A)			24.5
Dimensions	W X H X D (in.)	Indoor Unit	50 3/8 X 9 15/16 X 13 9/16
		Outdoor Unit	37 X 47 11/16 X 13
	Weight (lbs.)	Indoor Unit	40.8
		Outdoor Unit	189.6
Sound Pressure Level	Indoor Unit dB(A)	L / M / H	46 / 48 / 51
	Outdoor Unit dB(A)	Cooling / Heating (high)	52 / 54
Operating Temperatures	Outdoor	Cooling	23 ~ 122°F (-5 ~ 50°C) 0 ~ 122°F (-18 ~ 50°C) W/Baffle
		Heating	-4 ~ 75°F (-20 ~ 24°C)
	Indoor	Cooling	64 ~ 90°F (16 ~ 32°C)
		Heating	T ≤ 86°F (30°C)
	Pipe Connections	Indoor & Outdoor	High side
Low side			5/8"
Maximum (ft.)		246	
Maximum Vertical Separation (ft.)		98.4	
Condensate Connection	11/16 in. OD		
Refrigerant	Type		R410A
	Factory Charge	lbs.	6.39
	Charged for		24.6 ft.
Compressor	Manufacturer		Samsung
	Type		Inverter Driven, Twin BLDC Rotary
	RLA	Amps	14.7
Evaporator Fan	Type		BLDC With Crossflow Fan (1)
	Air Volume	CFM (L/M/H)	699 / 752 / 830
	Output	Watts	58
Condenser Fan	Motor		BLDC With Axial Type Fan (2)
	FLA / Watts / CFM (max.)		1.25A X 2 / 125W X 2 / 3,532 CFM
Safety	Certifications	UL 60335-2-40	
	Devices	PCB fuses, indoor unit terminal block thermal fuse, current transformer, over-voltage protection, crankcase heating, temperature limit protection logic, compressor overload sensing	



- General Information**
- The outdoor unit shall supply power to indoor unit via 14 AWG X 3 power wire
 - High-voltage terminal block temperature sensor to disable unit in the event of power connection overheating
 - Auto-restart after power loss
 - Soft-start compressor minimizing current inrush
 - All heat exchangers shall be mechanically bonded aluminum fin to copper tube
 - The condensing unit heat exchanger salt spray test method: ISO-9227 - the heat exchanger showed no unusual rust or corrosion development to 3,000 hours.
- Option settings**
- The outdoor unit shall have snow accumulation prevention option setting to prevent snow drifting against an idle outdoor unit.
 - Night-time Quiet Mode: reduction of operational sound during evening hours (*automatic or manual activation*)
 - Emergency Temperature Output (ETO) function: when indoor unit is in error status or when room temperature exceeds configurable temperature level, the system outputs a signal to an external source, e.g., backup system, building management system, alert device (ex: status light, warning lamp, buzzer)
 - System can be configured as heating/cooling, cooling only, or heating only via outdoor unit option setting
 - Maximum Current Control configurable from 50% - 100% via outdoor unit, wired controller, or central controls

- Indoor Fan**
- Indoor fan is a single crossflow type
 - Three fan speed settings and auto setting
 - Washable filter as standard

- Construction**
- Outdoor unit: Galvanized steel with a baked-on powder coated finish for durability
 - Indoor unit: UL94 V0 with a galvanized steel mounting plate

- Controls**
- Control wiring shall be 2 X 16 AWG
 - Wireless controller included as standard
 - Wired controllers must be purchased separately
 - Dual set temperature support when connected to MWR-WG00UN Advanced Wired Controller or central control options
 - No additional interface modules/adapters are required when connecting to Samsung central control options
 - The unit shall be operated via a wireless or wired remote control with DDC type signal

- Refrigerant System**
- The compressor shall be hermetically sealed, inverter-controlled Twin BLDC rotary type
 - Refrigerant flow shall be controlled by an electronic expansion valve at outdoor unit

Warranty
10 years compressor, 10 years parts, 1-year limited labor (conditions apply)

This publication reflects both the 1987 Appendix M metric (SEER) and the 2023 Appendix M1 metric (SEER2). Efficiency requirements are published at 10 C.F.R. 430.32(c). Please refer to www.AHRInet.org for more information about updated energy metrics.

¹Performance data certified by AHRI to AHRI 210-240 (2017) with Addendum 1.

²Performance data certified by AHRI to AHRI 210-240 (2023). Effective January 1st, 2023.

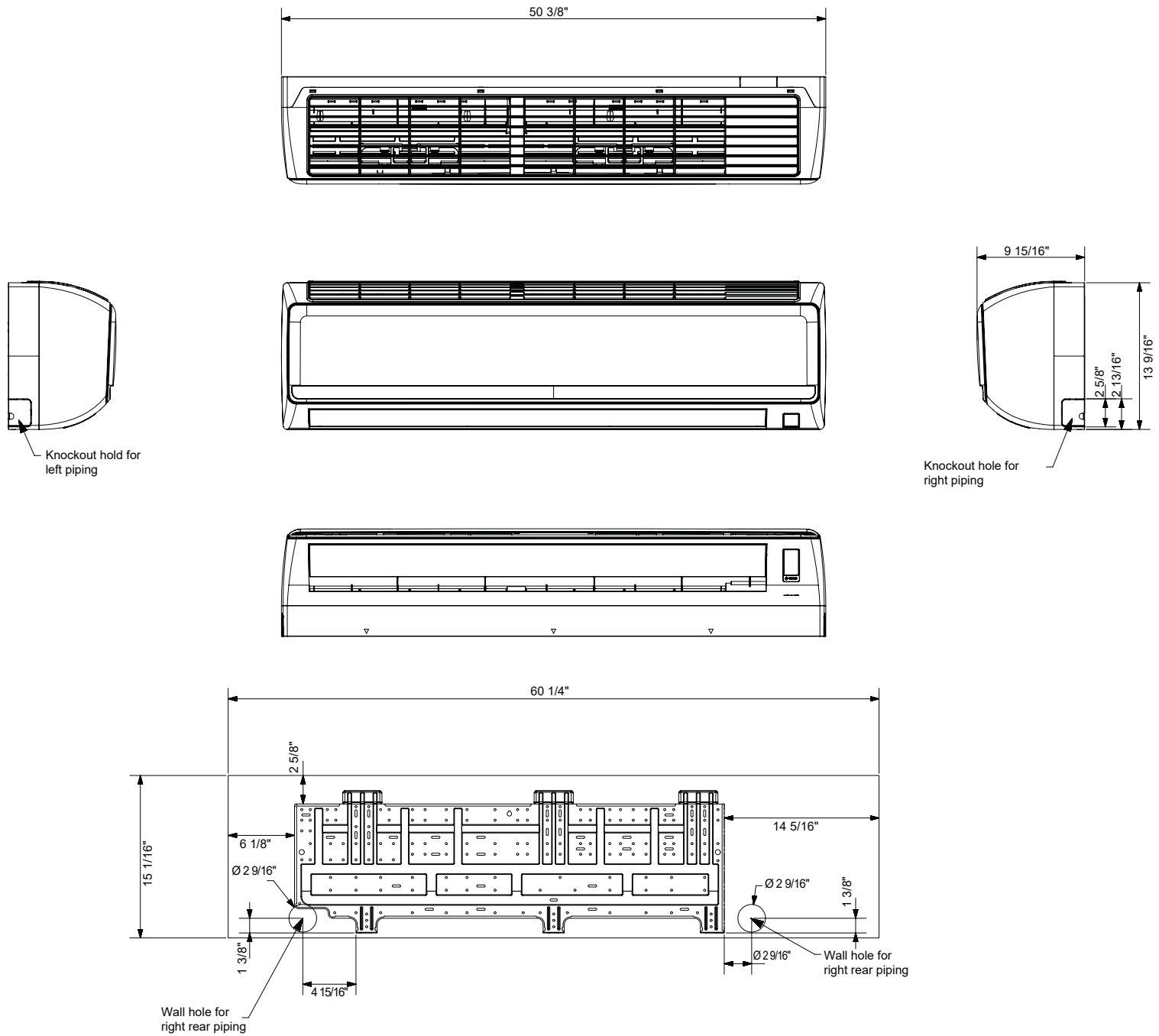
Samsung HVAC maintains a policy of ongoing development; specifications are subject to change without notice. Refer to www.AHRIdirectory.org for current reference numbers.

Select models are ENERGY STAR Labeled. Proper sizing and installation of equipment is critical to achieve performance. Split system air conditioners and heat pumps (excluding ductless systems) must be matched with appropriate coil components to meet ENERGY STAR criteria. Ask your contractor for details or visit www.energystar.gov.

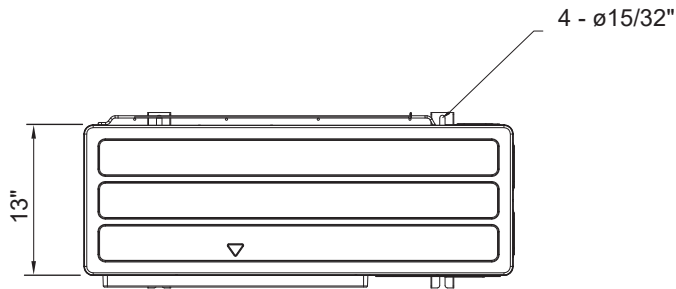


Optional Accessories

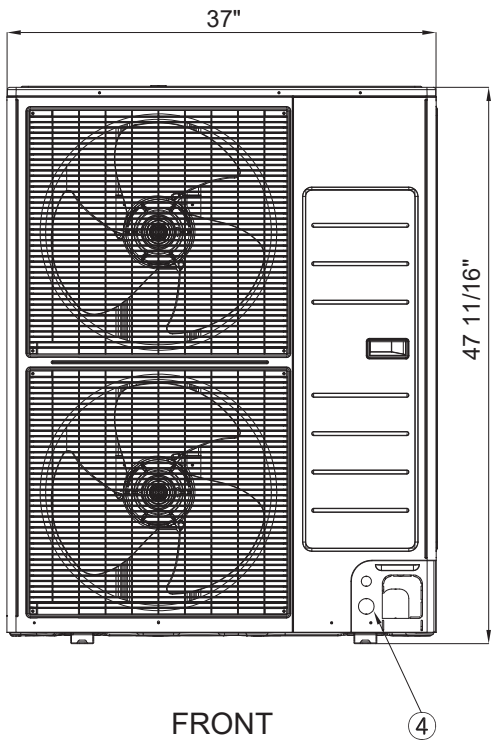
Wired Controller	Advanced	MWR-WG00UN
	Touchscreen	MWR-SH11UN
Thermostat Adaptor (for connection to a standard 24VAC thermostat)		MIM-A60UN
Wi-Fi adapter		MIM-H05UN
External Temperature Sensor		MRW-TA
External Contact Control		MIM-B14
Wall Bracket (for outdoor unit)		CKN-250
Wind Baffles	Front	WBF-1M2
	Back	WBB-2M-B
Hail Guard Kit (includes back and side guards)		HGK-4
Line Sets - insulated and flared, interconnect cables included		25' - ILS-2510
		50' - ILS-5010



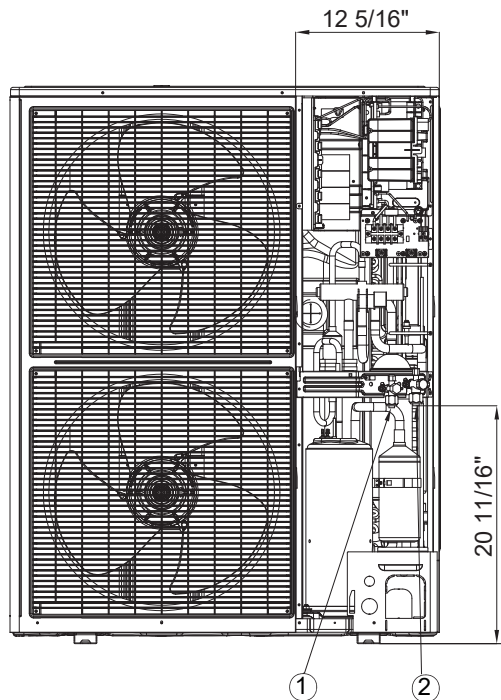
No.	Name	Description
1	Liquid pipe connection	3/8"
2	Gas pipe connection	5/8"
3	Drain pipe connection	1 1/16"
4	Power supply & Communication wiring conduit	-



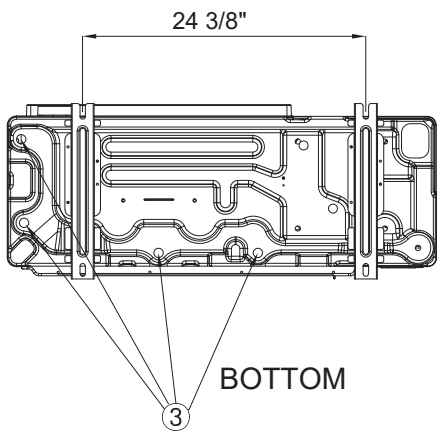
TOP



FRONT



FRONT WITHOUT SERVICE COVER



BOTTOM

No.	Name	Description
1	Refrigerant liquid pipe	3/8
2	Refrigerant gas pipe	5/8
3	Drain hole	Connect with provided drain plug
4	Power and communication conduit openings	--