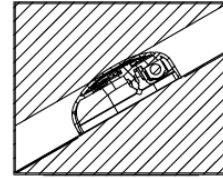
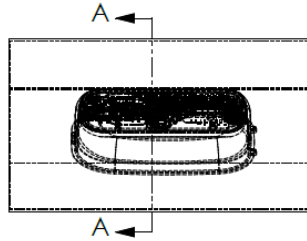
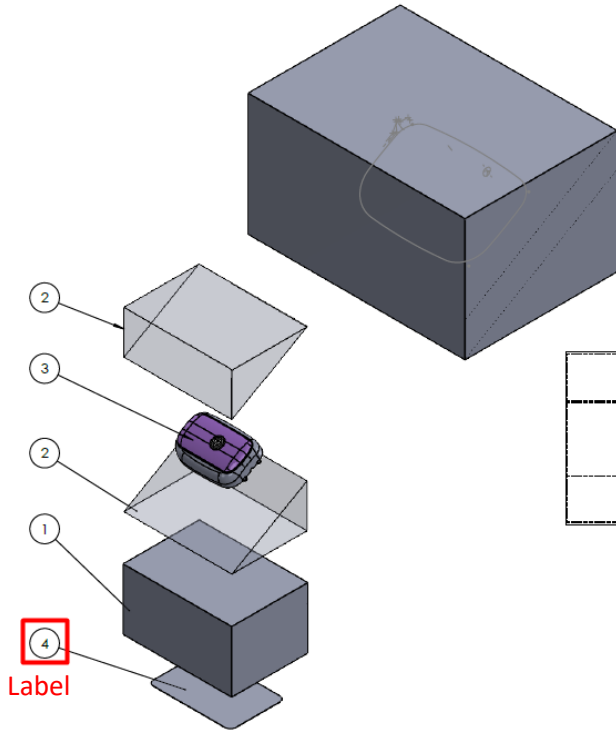


| ITEM NO. | Number | DESCRIPTION | Default/ QTY. |
|----------|---------|-------------------------------|---------------|
| 1 | MTL-55 | BOX, M1.1 CONTROLLER PACKAGED | 1 |
| 2 | MTL-116 | POLYURETHANE FOAM | 2 |
| 3 | MTL-19 | M1.1 Controller | 1 |
| 4 | MTL-38 | Label Stock 2" X 3" | 1 |

LBL-4 printed on MTL-38



SECTION A-A
SCALE 1 : 1



| | | | | | | |
|-----------------|----|--|-----------------|------------|--------------------------|--------------|
| MATERIAL | NA | DRAWN BY | R&D Engineering | TITLE | M1.1 Controller Packaged | |
| FINISH/TREATURE | NA | DATE | 1/2/2024 | SIZE | DWG. NO. | VER. |
| COLOR | NA | <small>PROPRIETARY AND CONFIDENTIAL ALL INFORMATION CONTAINED HEREIN IS THE PROPERTY OF MEDICAL PRODUCTS, INC. AND IS TO BE KEPT IN STRICTLY CONFIDENTIAL MANNER. NO PART OF THIS DOCUMENT IS TO BE REPRODUCED OR TRANSMITTED IN ANY FORM OR BY ANY MEANS, ELECTRONIC OR MECHANICAL, INCLUDING PHOTOCOPYING, RECORDING, OR BY ANY INFORMATION STORAGE AND RETRIEVAL SYSTEM, WITHOUT THE WRITTEN PERMISSION OF MEDICAL PRODUCTS, INC. © 2024</small> | | B | MTL-54 | 6.0 |
| DURCOMETER | NA | | | SCALE: 1:1 | DATE: 1/2/2024 | SHEET 1 OF 1 |

DIMENSIONS ARE IN MILLIMETERS