



Philips UniFlood M gen2: A high power floodlight with true modularity

UniFlood M G2

Philips UniFlood M gen2 is a cost-effective, exterior-rated architectural LED floodlight that's designed for façade, landscape and outdoor flood lighting applications. The robust, modular, rectangular design features highly-efficient optics, making it ideal for illuminating everything from multi-storey façades and bridges to landmarks and monuments. This LED floodlight is available in white, monochromatic colors, RGB, RGBW and tunable white. It comes with six different spread lenses ranging from narrow spot to wide flood and has DMX512/RDM control option. A truly modular floodlight that gives architects and designers the freedom to explore a wide range of concepts and designs with no limitations.

Benefits

- Great design flexibility with individually tilting heads and controls
- Create the right lighting effect with six different spread lenses (narrow spot to wide flood)
- Easy to control with DMX512/RDM
- A robust choice that's IP66-rated for outdoor use

Features

- Standard: RGBW, RGB, 2700K, 3000K and 4000K
- Optional 5000K, monochromatic colors and tunable white
- Flexible lengths from 155 to 569 mm
- Adjustable tilting angles for each head and for the whole set
- Steel brackets

UniFlood M G2

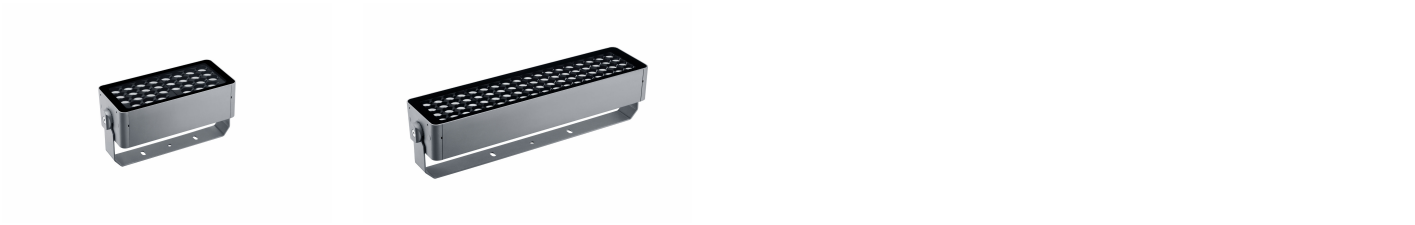
Application

- Bridges, Monuments, Facades
- Parks and Plazas
- Landscape

Warnings and Safety

- For outdoor use only.

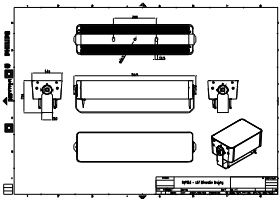
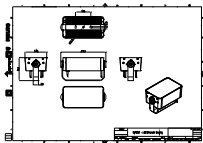
Versions



UniFlood M Gen2

UniFlood M Gen2

Dimensional drawing



UniFlood M G2

General Information

CE mark	CE mark
Driver included	Yes
Flammability mark	For mounting on normally flammable surfaces

Approval and Application

Mech. impact protection code	IK06
Ingress protection code	IP66

Light Technical

Optical cover/lens type	Clear glass
Color rendering index (CRI)	>80

Mechanical and Housing

Housing Color	Dark gray
---------------	-----------

Light Technical

Order Code	Full Product Name	Light source	Correlated Color	
		color	Temperature (Nom)	Luminous Flux
911401747143	BVP353 30LED 30K 220V L30 45	830 warm white	3000 K	4,945 lumen
911401748383	BVP353 72LED RGBNW 220V L57 10 DMX	RGBW	-	7,515 lumen
911401748473	BVP353 72LED RGBNW 220V L57 15 DMX	RGBW	-	7,890 lumen

Operating and Electrical

Order Code	Full Product Name	Power Consumption
911401747143	BVP353 30LED 30K 220V L30 45	60 W
911401748383	BVP353 72LED RGBNW 220V L57 10 DMX	150 W

Order Code	Full Product Name	Power Consumption
911401748473	BVP353 72LED RGBNW 220V L57 15 DMX	150 W

Controls and Dimming

Order Code	Full Product Name	Dimmable
911401747143	BVP353 30LED 30K 220V L30 45	No
911401748383	BVP353 72LED RGBNW 220V L57 10 DMX	Yes

Order Code	Full Product Name	Dimmable
911401748473	BVP353 72LED RGBNW 220V L57 15 DMX	Yes

