



# VPN01L/05L

## ProSafe™ VPN Client Software Single and 5-User Licenses

- *Help is there when you need it! NETGEAR provides 24x7 technical support\* in English, with selected local language support during office hours.*

Today's distributed mobile workforce requires secure, remote access to corporate network resources. Network security administrators need a VPN client solution that is simple to deploy, manageable and completely secure. NETGEAR®'s ProSafe VPN Client software delivers the ideal solution, with robust encryption and broad support across multiple connection types and Microsoft® Windows® operating platforms. The ProSafe VPN client provides easy setup and seamless compatibility with the full line of NETGEAR VPN/Firewall routers as well as compatibility with IPSec VPN solutions from other leading manufacturers. With the NETGEAR ProSafe VPN client, NETGEAR extends its line of cost-effective security offerings, providing a single-vendor solution for growing businesses.

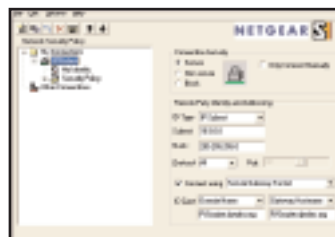
**Robust Security** ● Supports a wide range of security protocols and authentication methods, including Advanced Encryption Standard (AES), Data Encryption Standard (DES), 3DES, Message-Digest Algorithm (MD5) and Secure Hash Algorithm (SHA-1). Also supports Public-Key Infrastructure (PKI) and Internet Key Exchange (IKE - Main and Aggressive modes), plus a wide range of Smart Cards and certificate authorities.

**Extensive Compatibility** ● Provides protected access to corporate resources via wireless, broadband, and dial-up connections. Supports NETGEAR VPN/Firewall routers, including the FVS318, FVL328, FVM318, and FWAG114, as well as many other IPSec-compliant VPN devices. Enables client-initiated VPNs from Windows 98, Me, XP, 2000, and Windows NT®-based PCs.

**Ease of Use** ● NETGEAR provides pre-configuration files for NETGEAR ProSafe VPN/Firewall routers to minimize setup and support costs of the ProSafe VPN client software. NETGEAR's ProSafe VPN client allows you to configure security policies and manage certificates through its Windows-based graphical user interface, and to create and distribute customized installations for easy setup of end users. The ProSafe VPN client includes several modules that make it easy to configure and diagnose connection problems:

- Certificate Manager facilitates digital certificate enrollment for online or manual enrollment.
- Security Policy Editor enables configuration of a security policy connection-by-connection.
- Connection Monitor displays statistical and diagnostic information for each active connection.
- Log Viewer lists the IKE negotiations that occur as secure connections are established.

**Advanced Functionality** ● Includes Network Address Translation (NAT) traversal support for VPN clients behind devices that support VPN pass-through mode. Supports multiple configurations, including split tunneling, block tunneling, and central tunneling. Provides redundant gateway capability and keepalives for increased reliability.



Connection Settings



Authentication  
encryption settings



Data encryption settings

**Fee-based Premium Networking Support Service**

*This product is supported only through our fee-based Premium Network Support Service. NETGEAR's premium support service is an affordably priced option using expert network technicians with advanced networking knowledge. With this service, we provide support for advanced NETGEAR product features as well as non-NETGEAR issues that are not covered under the standard warranty support service. For more information, point your browser to <http://www.NETGEAR.com/support/premium/>.*

**Search Our Knowledgebase**

*You can avoid paying for support by using our comprehensive self help knowledgebase. Our online knowledgebase is your first resource for troubleshooting and other issues. It has the most up-to-date information on drivers, manuals, and firmware. The frequently asked questions cover most support issues you will encounter. Just point your browser to <http://www.NETGEAR.com/support> to search the knowledgebase.*

**NETGEAR®**

4500 Great America Parkway  
Santa Clara, CA 95054 USA  
Phone: 1-888-NETGEAR  
E-mail: [info@NETGEAR.com](mailto:info@NETGEAR.com)  
[www.NETGEAR.com](http://www.NETGEAR.com)

©2005 NETGEAR, Inc. NETGEAR®, Everybody's connecting®, the Netgear logo, Auto Uplink, ProSafe, Smart Wizard and RangeMax are trademarks or registered trademarks of NETGEAR, Inc. in the United States and/or other countries. Microsoft, Windows, and the Windows logo are trademarks or registered trademarks of Microsoft Corporation in the United States and/or other countries. Other brand and product names are trademarks or registered trademarks of their respective holders. Information is subject to change without notice. All rights reserved.

\* X.509 Certificate Authorities supported include: VeriSign OnSite, Entrust VPN Connector, Microsoft CA, RSA KeyOn CA, iPlanet (Netscape) CA, Baltimore UniCert and DODPKI CA.

\*\* Official support for Schlumberger, Rainbow IKey and DataKey drivers.

**Technical Specifications**

- Encryption
  - 168-bit Triple Data Encryption Standard (3DES) and 56-bit Data Encryption Standard (DES)
  - Message-Digest Algorithm (MD5) or Secure Hash Algorithm (SHA-1)
  - Advanced Encryption Standard (AES) (128-, 192-, and 256-bit)
- PKI
  - X.509 certificate authority\*
  - Smart Card support\*\*
  - PKCS #7 certificate chains
  - PKCS #10 certificate requests
  - PKCS #12 certificate import
  - MSCAPI support
- Diffie-Helman Group Support
  - Group 1-MODP 768, Group 2 – MODP 1024, Group 5 – MODP 1536
- Authentication Mechanisms
  - Preshared keys, RSA signatures
- Key Management
  - IKE (Internet Key Exchange)
- IPSec Modes
  - Tunnel, Transport
- IKE Modes
  - Main, Aggressive, Quick
- Compression
  - IPComp – Deflate and plug-in support for LZS
- Additional Security Features
  - NAT Traversal, LDAP Directory support, Centralized Policy Management, Self-signed certificate support, XAUTH support, L2TP protocol support, Redundant Gateways, IKE keepalives, Audit Log, Split, Block and Central Tunneling

**System Requirements**

- Pentium® Class (or equivalent processor) PC
- Microsoft® Windows® 98, Me, Windows NT 4.0, Windows 2000, Windows XP® operating system
- Disk space – 10 MB
- 16 MB RAM for Windows 98
- 32 MB RAM for NT, 64 MB for ME and 2000
- 64 MB for XP
- 35 MB hard disk space

**Package Contents**

- ProSafe VPN Client Software CD in 1-user (VPN01L) or 5-user (VPN05L) license packs
- Installation guide (on disk)
- ProSafe VPN Easy Configuration Files
- Support information and warranty card

**NETGEAR Related Products**

- FVS318 Cable/DSL ProSafe™ VPN Firewall Router
- FVL328 Cable/DSL ProSafe™ High-speed VPN Firewall Router
- FVM318 Cable/DSL ProSafe™ Wireless VPN Security Firewall
- FWAG114 ProSafe Dual Band Wireless VPN Firewall

- Warranty
  - NETGEAR 90-day warranty