

Quick Start Guide



This product meets applicable national SAR limits of 1.6 W/kg. The specific maximum SAR values can be found on page 18 of this user guide.

When carrying the product or using it while worn on your body, either use an approved accessory such as a holster or otherwise maintain a distance of 1.0 cm from the body to ensure compliance with RF exposure requirements. Note that the product may be transmitting even if you are not making a phone call.

The mobile phone is in compliance with the requirement of EN 60950-1: 2006 amendment A12: 2011. There will appear a warning box when the volume level is over 4. If the user selects left soft key in the warning box, the volume can be increased and the phone will repeat the acknowledgement more than once every 20h of cumulative listening time.



PROTECT YOUR HEARING

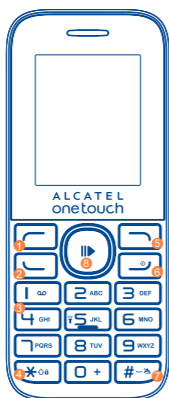
To prevent possible hearing damage, do not listen at high volume levels for long periods. Exercise caution when holding your device near your ear while the loudspeaker is in use.



ALCATEL
onetouch

English - CJB1CB4ALAAA

Your mobile.....



- 1 Left soft key
- 2 Call logs (idle screen)
Send call
- 3 Voice mail (long key-press)
- 4 Lock Key (long press *06 key)
- 5 Right soft key
- 6 Power on/Power off
End call
- 7 Silent mode
- 8 Navigation key :
Music/Confirm an option
- 9 Increase volume ▲
- 10 Decrease volume ▼
- 11 New SMS ◀
- 12 Alarm ▶

1.1 Keys

- Navigation key
Confirm an option (press the middle of the key)
- Send call
Access to call log (idle screen)
- Power on/off the handset (long press)
End call
Return to idle
- Left soft key
- Right soft key
- From Idle screen
- Press: input 1
- Long press: Dial the voice mail number
In Edit mode:
- Press: Input symbols
- Long press: input numbers
- From Idle screen
- Press: enter zero
- Long press: input +, "+" are used for dialling an international call.
In Edit mode:
- Long Press: input 0 (add numbers)

- *06 From Idle screen
- Press: input *
- Long press: lock keypad
In Edit mode:
- Press: change input methods
- Long press: change writing language

- #-> From Idle screen
- Press: input #
- Long press: activate/deactivate silent mode
In Edit mode:
- Press: input space
- Long press: access the Symbols table

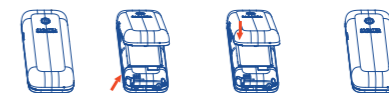
1.2 Idle screen icons

- Battery charge level.
- Silent mode: your phone neither rings, beeps nor vibrates.
- Flight mode.
- Headset connected.
- Alarm clock programmed.
- Missed calls.
- Level of network reception.
- Unread SMS / MMS.
- Message full.
- Call divert.

2 Getting started

2.1 Set up

Removing and installing the back cover



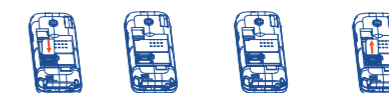
Removing and installing the battery



Inserting and removing TF card

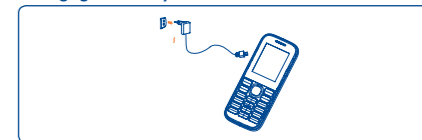


Removing and inserting the SIM



First, place the SIM card with the chip facing downwards and put it into the left housing and lock the metal cover. To remove the card, open the metal cover and get it out.

Charging the battery



Connect the battery charger to your phone and outlet respectively.

- The charging may take about 20 minutes to start if the battery is flat.
- Be careful not to force the plug into the socket.
- Make sure the battery is correctly inserted before connecting the charger.
- The outlet must be near to the phone and easily accessible (avoid electric extension cables).
- When using your telephone for the first time, charge the battery fully (approximately 3 hours). You are advised to fully charge the battery ().
- To reduce power consumption and energy waste, when battery is fully charged, disconnect your charger from the plug; reduce the backlight time, etc.



The charge is complete when the animation stops.

2.2 Power on your phone

Hold down the key until the phone powers on.

2.3 Power off your phone

Hold down the key from the idle screen.

3 Calls.....

3.1 Making a call

Dial the desired number, press the key and choose SIM to place the call. If you make a mistake, you can delete the incorrect digits by pressing the key. To hang up the call, press the key.

Making an emergency call

If your phone is covered by the network, dial emergency number and press the key to make an emergency call. This works even without a SIM card and without typing the PIN code or unlocking the keypad.

3.2 Calling your Voice mail⁽¹⁾

You can see SIM voice mail in this menu.

3.3 Receiving a call

When you receive an incoming call, press the key to talk and then hang up using the key.

3.4 Available functions during the call

During a call, you can use your directory, your calendar, text message etc. without hanging up or dropping the call.

⁽¹⁾ Contact your network operator to check service availability.

4 FM radio.....

Your phone is equipped with a radio. You can use the application as a traditional radio with saved channels. In FM radio interface, press to play/pause the playing process of the current channel, press and to tune volume.

5 Call logs

You can access your SIM call history by pressing from the idle screen, or press the key and select the icon from the menu. In this menu, you will see all call history.

6 Camera

Your mobile phone is fitted with a camera for taking photos that you can use in different ways: store them in your "phone/MemoryCard", customise your main screen. Make sure that microSD card is well inserted before taking photos.

7 Tools

7.1 Alarm

Your mobile phone has a built-in alarm clock with snooze feature.

7.2 Games

This function enables you to enjoy simple games.

7.3 Call Filter

You can create blacklist/whitelist through this function.

7.4 Internet

This function enables you to surf the Internet using the mobile phone.

Note: Consulting the local network operator for related fee and specific setup.

7.5 Calculator

Press the up, down, left, right and OK key to select +, -, x, /, and = respectively.

press left soft key to clear the figure.

7.6 Calendar

Once you enter this menu, there is a monthly-view calendar for you to view the date; you can go to any day you want.

7.7 Torch

Turn on/off the torch whenever you need to. In idle screen, long press 5 key to activate/deactivate the torch light.

7.8 Recorder

Use this function to record audio files. The phone support WAV, AMR, MP3. The recording file you stopped will be stored in audio file automatically.

7.9 World time

The World time shows current local time and the time zone in different cities.

7.10 Timer

You can use the timer function to carry out the time, the left soft key to reset, OK key to start, the right soft key to back.

7.11 Convert

Convert support weight conversion and length conversion.

7.12 Notes

You can make a note in text format by accessing "Notes" from the main menu.

7.13 Ebook

You can read txt format document here.

7.14 Services

STK service is the tool kit of SIM card. This phone supports the service function. The specific items depend on SIM card and network. Service menu will be automatically added to the phone menu when supported by network and SIM card.

8 Message.....

From the main menu select "Message" to access the messages, and choose "Create message" to create SMS & MMS. You can type a message send it to a recipient in the SIM card directory. While writing a message, select "Options" to access all the messaging options.



Specific letters (accent) will increase the size of the SMS, this may cause multiple SMS to be sent to your recipient.

9 Multimedia.....

9.1 Video recorder

Your mobile phone is fitted with a camera for shoot photos that you can use in different ways: store them in your "phone/Memory Card". Make sure that microSD card is well inserted before shoot.

9.2 Image

A library links to the images in memory card to be set as Wallpaper.

9.3 Music

Access this feature from the Multimedia by selecting "Music". You will have full flexibility of managing music on memory card. Make sure that microSD card is well inserted before activating music.

9.4 Video

Use this function to play video files. Press the Music key to play/pause the video player; press up key or down key to tune volume; press left key or right key to play the last or next video.

10 My files.....

The phone provides a certain space for users to manage files and support the memory card. The capacity of the memory card is selectable. You can use the file manager to conveniently manage various directories and files on the phone and the memory card.

11 Contacts

11.1 Consulting your contacts

You can access your contacts by pressing from the idle screen, or press the key and select the icon from the menu. In this menu, you will see all contacts.

11.2 Add contact

You can add a new contact to phone or SIM card by selecting "Add contact" from the menu "Options".

12 Settings.....

From the main menu, select the menu and select the function of your choice in order to customise your telephone: Phone settings, Call settings, Profiles, Connections, Security, Restore factory settings.

13 Input mode

This mode allows you to type a text by choosing a letter or a sequence of characters associated with a key. Press the key several times until the desired letter is highlighted. When you release the key the highlighted character is inserted into the text.

ALCATEL is a trademark of Alcatel-Lucent and is used under license by TCL Communication Ltd.

© Copyright 2015 TCL Communication Ltd
All rights reserved

TCL Communication Ltd reserves the right to alter material or technical specification without prior notice.

Safety and use.....

We recommend that you read this chapter carefully before using your mobile phone. The manufacturer disclaims any liability for damage, which may result as a consequence of improper use or use contrary to the instructions contained herein.

• **TRAFFIC SAFETY:**

Given that studies show that using a mobile phone while driving a vehicle constitutes a real risk, even when the hands-free kit is used (car kit, headset...), drivers are requested to refrain from using their mobile phone when the vehicle is not parked. Check the laws and regulations on the use of wireless mobile phones and their accessories in the areas where you drive. Always obey them. The use of these devices may be prohibited or restricted in certain areas.

When driving, do not use your mobile phone and headphone to listen to music or to the radio. Using a headphone can be dangerous and forbidden in some areas.

When switched on, your mobile phone emits electromagnetic waves that can interfere with the vehicle's electronic systems such as ABS anti-lock brakes or airbags. To ensure that there is no problem:

- do not place your mobile phone on top of the dashboard or within an airbag deployment area,
- check with your car dealer or the car manufacturer to make sure that the car's electronic devices are shielded from mobile phone RF energy.

• **CONDITIONS OF USE:**

You are advised to switch off the mobile phone from time to time to optimize its performance.

Remember to abide by local authority rules of mobile phone use on aircrafts.

Operational Warnings: Obey all posted signs when using mobile devices in public areas.

Follow Instructions to Avoid Interference Problems: Turn off your mobile device in any location where posted notices instruct you to do so. In an aircraft, turn off your mobile device whenever instructed to do so by airline staff. If your mobile device offers an airplane mode or similar feature, consult airline staff about using it in flight.

Switch the mobile phone off when you are in health care facilities, except in designated areas. As with many other types of equipment now in regular use, mobile phones can interfere with other electrical or electronic devices, or equipment using radio frequency.

Switch the mobile phone off when you are near gas or flammable liquids. Strictly obey all signs and instructions posted in a fuel depot, gas station, or chemical plant, or in any potentially explosive atmosphere. When the mobile phone is switched on, it should be kept at least 15 cm from any medical device such as a pacemaker, a hearing aid or insulin pump. In particular when using the mobile phone you should hold it against the ear on the opposite side to the device, if any.

Read and follow the directions from the manufacturer of your implantable medical device. If you have any questions about using your mobile device with your implantable medical device, consult your healthcare provider.

To avoid hearing impairment, answer the call before holding your mobile phone to your ear. Also move the handset away from your ear while using the "hands-free" option because the amplified volume might cause hearing damage.

It is recommended to have proper supervision while small children use your mobile phone.

When replacing the cover please note that your mobile phone may contain substances that could create an allergic reaction.

Always handle your mobile phone with care and keep it in a clean and dust-free place.

Do not allow your mobile phone to be exposed to adverse weather or environmental conditions (moisture, humidity, rain, infiltration of liquids, dust, sea air, etc.). The manufacturer's recommended operating temperature range is -10°C (14°F) to +55°C (131°F) (the max value depends on device, materials and housing paint/texture). Over 55°C (131°F) the legibility of the mobile phone's display may be impaired, though this is temporary and not serious.

Do not open or attempt to repair your mobile phone yourself.

Do not drop, throw or try to bend your mobile phone.

Do not use the mobile phone if the glass made screen, is damaged, cracked or broken to avoid any injury.

Do not paint it.

Use only batteries, battery chargers, and accessories which are recommended by TCL Communication Ltd. and its affiliates and are compatible with your mobile phone model. TCL Communication Ltd. and its affiliates disclaim any liability for damage caused by the use of other chargers or batteries.

Your mobile phone should not be disposed of in a municipal waste. Please check local regulations for disposal of electronic products.

Remember to make back-up copies or keep a written record of all important information stored in your mobile phone.

Some people may suffer epileptic seizures or blackouts when exposed to flashing lights, or when playing video games. These seizures or blackouts may occur even if a person never had a previous seizure or blackout. If you have experienced seizures or blackouts, or if you have a family history of such occurrences, please consult your doctor before playing video games on your mobile phone or enabling a flashing-lights feature on your mobile phone. Parents should monitor their children's use of video games or other features that incorporate flashing lights on the mobile phones. All persons should discontinue use and consult a doctor if any of the following symptoms occur: convulsion, eye or muscle twitching, loss of awareness, involuntary movements, or disorientation. To limit the likelihood of such symptoms, please take the following safety precautions:

- Play at the farthest distance possible from the screen. When you play games on your mobile phone, you may experience occasional discomfort in your hands, arms, shoulders, neck, or other parts of your body. Follow these instructions to avoid problems such as tendinitis, carpal tunnel syndrome, or other musculoskeletal disorders:

- Take a minimum of a 15-minute break every hour of game playing.
- If your hands, wrists, or arms become tired or sore while playing, stop and rest for several hours before playing again.
- If you continue to have sore hands, wrists, or arms during or after playing, stop the game and see a doctor.

PROTECT YOUR HEARING

To prevent possible hearing damage, do not listen at high volume levels for long periods. Exercise caution when holding your device near your ear while the loudspeaker is in use.

• **PRIVACY:**

Please note that you must respect the laws and regulations in force in your jurisdiction or other jurisdiction(s) where you will use your mobile phone regarding taking photographs and recording sounds with your mobile phone. Pursuant to such laws and regulations, it may be strictly forbidden to take photographs and/or to record the voices of other people or any of their personal attributes, and reproduce or distribute them, as this may be considered to be an invasion of privacy. It is the user's sole responsibility to ensure that prior authorization be obtained, if necessary, in order to record private or confidential conversations or take a photograph of another person; the manufacturer, the seller or vendor of your mobile phone (including the operator) disclaim any liability which may result from the improper use of the mobile phone.

There are no express warranties, whether written, oral or implied, other than this printed limited warranty or the mandatory warranty provided by your jurisdiction. In no event shall TCL Communication (US), Inc. or any of its affiliates be liable for incidental or consequential damages of any nature whatsoever, including but not limited to commercial loss, to the full extent those damages can be disclaimed by law. Some states do not allow the exclusion or limitation of incidental or consequential damages, or limitation of the duration of implied warranties, so the preceding limitations or exclusions may not apply to you.

How to obtain Support: Contact the customer care center by calling (877-702-3444) or going to (http://www.alcatelonetouch.com/usa/). We have placed many self-help tools that may help you to isolate the problem and eliminate the need to send your wireless device in for service. In the case that your wireless device is no longer covered by this limited warranty due to time or condition, you may utilize our out of warranty repair options.

How to obtain Hardware Service within the terms of this warranty: Create a user profile (alcatel.finetw.com) and then create an RMA for the defective device. Ship the device with a copy of the original proof of purchase (e.g. original copy of the dated bill of sale, invoice) with the owner's return address (No PO Boxes accepted), wireless carrier's name, alternate daytime phone number, and email address with a complete problem description. Only ship the device. Do not ship the SIM card, memory cards, or any other accessories such as the power adapter. You must properly package and ship the wireless device to the repair center. TCL Communication (US), Inc. is not responsible for devices that do not arrive at the service center or are damaged in transit. Insurance is recommended with proof of delivery. Upon receipt, the service center will verify the warranty conditions, repair, and return your device to the address provided in the RMA. Check the warranty repair status by going online with the RMA number on web portal.

• **BATTERY AND ACCESSORIES:**

Before removing the battery from your mobile phone, please make sure that the mobile phone is switched off.

Observe the following precautions for battery use:

- Do not attempt to open the battery (due to the risk of toxic fumes and burns).
- Do not puncture, disassemble or cause a short-circuit in a battery.
- Do not burn or dispose of a used battery in the garbage or store it at temperatures above 60°C (140°F).

Batteries must be disposed of in accordance with locally applicable environmental regulations. Only use the battery for the purpose for which it was designed. Never use damaged batteries or those not recommended by TCL Communication Ltd. and/or its affiliates.



This symbol on your mobile phone, the battery and the accessories means that these products must be taken to collection points at the end of their life:

- Municipal waste disposal centers with specific bins for these items of equipment.
- Collection bins at points of sale.

They will then be recycled, preventing substances being disposed of in the environment, so that their components can be reused.

In European Union countries:

These collection points are accessible free of charge. All products with this sign must be brought to these collection points.

In non European Union jurisdictions: Items of equipment with this symbol are not be thrown into ordinary bins if your jurisdiction or your region has suitable recycling and collection facilities; instead they are to be taken to collection points for them to be recycled.

In the United States you may learn more about CTIA's Recycling Program at http://www.gowirelessgogreen.org/

CAUTION: RISK OF EXPLOSION IF BATTERY IS REPLACED BY AN INCORRECT TYPE. DISPOSE OF USED BATTERIES ACCORDING TO THE INSTRUCTIONS


• **CHARGERS**

Home A.C./ Travel chargers will operate within the temperature range of: 0°C (32°F) to 40°C (104°F).

The chargers designed for your mobile phone meet with the standard for safety of information technology equipment and office equipment use. Due to different applicable electrical specifications, a charger you purchased in one jurisdiction may not work in another jurisdiction. They should be used for this purpose only.

Troubleshooting.....

Before contacting the service center, you are advised to follow the instructions below:

- You are advised to fully charge () the battery for optimal operation.
- Avoid storing large amounts of data in your phone as this may affect its performance.

My phone is frozen or cannot switch on

- Check the battery contacts, remove and reinstall your battery, then turn your phone on.
- Check the battery power level, charge for at least 20 minutes.

My phone has not responded for several minutes

- Remove and re-install the battery, then restart the phone.

My phone turns off by itself

- Check that your screen is locked when you are not using your phone, and make sure the **Power** key is not mis-contacted due to unlocked screen.
- Check the battery charge level.
- If it still does not work, please use User Data Format to reset the phone.

My phone cannot charge properly

- Make sure you are using an ALCATEL ONETOUCH battery and the charger from the box.
- Make sure your battery is inserted properly and clean the battery contact if it's dirty.It must be inserted before plugging in the charger.
- Make sure that your battery is not completely discharged; if the battery power is empty for a long time, it may take around 20 minutes to display the battery charger indicator on the screen.
- Make sure charging is carried out under normal conditions (0°C to +40°C).
- When abroad, check that the voltage input is compatible.

Characteristics of power supply (depending on the country):

Travel charger: Input: 100-240 V, 50/60 Hz, 100 mA

Output: 5 V, 200 mA

Battery: Lithium 400 mAh

• **RADIO WAVES:**

THIS MOBILE PHONE MEETS THE GOVERNMENT'S REQUIREMENTS FOR EXPOSURE TO RADIO WAVES.

Your mobile phone is a radio transmitter and receiver. It is designed and manufactured not to exceed the emission limits for exposure to radio-frequency (RF) energy. These limits are part of comprehensive guidelines and establish permitted levels of RF energy for the general population. The guidelines are based on standards that were developed by independent scientific organizations through periodic and thorough evaluation of scientific studies. These guidelines include a substantial safety margin designed to ensure the safety of all persons, regardless of age and health.

The exposure standard for mobile phones employs a unit of measurement known as the Specific Absorption Rate, or SAR. The SAR limit set by public authorities such as the Federal Communications Commission of the US Government (FCC), or by Industry Canada, is 1.6 W/kg averaged over 1 gram of body tissue. Tests for SAR are conducted using standard operating positions with the mobile phone transmitting at its highest certified power level in all tested frequency bands.

Although the SAR is determined at the highest certified power level, the actual SAR level of the mobile phone while operating can be well below the maximum value. This is because the mobile phone is designed to operate at multiple power levels so as to use only the power required to reach the network. In general, the closer you are to a wireless base station antenna, the lower the power output of the mobile phone. Before a mobile phone model is available for sale to the public, compliance with national regulations and standards must be shown.

The highest SAR value for this model mobile phone when tested is 1.02 W/Kg for use at the ear and 1.51 W/Kg for use close to the body.

While there may be differences between the SAR levels of various mobile phones and at various positions, they all meet the government requirement for RF exposure. For body-worn operation, the mobile phone meets FCC RF exposure guidelines provided that it is used with a non-metallic accessory with the handset at least 10 mm from the body. Use of other accessories may not ensure compliance with FCC RF exposure guidelines.

19

My phone cannot connect to a network or “No service” is displayed

- Try connecting in another location.
- Verify the network coverage with your operator.
- Check with your operator that your SIM card is valid.
- Try selecting the available network(s) manually.
- Try connecting at a later time if the network is overloaded.


My phone cannot connect to the Internet

- Check that the IMEI number (press *#06#) is the same as the one printed on your warranty card or box.
- Make sure that the internet access service of your SIM card is available.
- Check your phone's Internet connecting settings.
- Make sure you are in a place with network coverage.
- Try connecting at a later time or another location.

Invalid SIM card

- Make sure the SIM card has been correctly inserted (see "Inserting or removing the SIM card").
- Make sure the chip on your SIM card is not damaged or scratched.
- Make sure the service of your SIM card is available.

Unable to make outgoing calls

- Make sure you have dialed a valid number and pressed the  key.
- For international calls, check the country and area codes.
- Make sure your phone is connected to a network, and the network is not overloaded or unavailable.
- Check your subscription status with your operator (credit, SIM card valid, etc.).
- Make sure you have not barred outgoing calls.
- Make sure that your phone is not in flight mode.

Unable to receive incoming calls

- Make sure your phone is switched on and connected to a network (check for overloaded or unavailable network).
- Check your subscription status with your operator (credit, SIM card valid, etc.).
- Make sure you have not forwarded incoming calls.
- Make sure that you have not barred certain calls.
- Make sure that your phone is not in flight mode.

The caller's name/number does not appear when a call is received

- Check that you have subscribed to this service with your operator.
- Your caller has concealed his/her name or number.

Additional information on SAR can be found on the Cellular Telecommunications & Internet Association (CTIA) Web site: http://www.ctia.org/

The World Health Organization (WHO) considers that present scientific information does not indicate the need for any special precautions for use of mobile phones. If individuals are concerned, they might choose to limit their own or their children's RF exposure by limiting the length of calls, or using "hands-free" devices to keep mobile phones away from the head and body. (fact sheet n°193). Additional WHO information about electromagnetic fields and public health are available on the following website: http://www.who.int/peh-emf.

Note: This equipment has been tested and found to comply with the limits for a Class B digital device pursuant to part 15 of the FCC Rules. These limits are designed to provide reasonable protection against harmful interference in a residential installation. This equipment generates, uses and can radiate radio frequency energy and, if not installed and used in accordance with the instructions, may cause harmful interference to radio communications. However, there is no guarantee that interference to radio or television reception, which can be determined by turning the equipment off and on, the user is encouraged to try to correct the interference by one or more of the following measures:

- Reorient or relocate the receiving antenna.
- Increase the separation between the equipment and receiver.
- Connect the equipment into an outlet on a circuit different from that to which the receiver is connected.
- Consult the dealer or an experienced radio/ TV technician for help.

Changes or modifications not expressly approved by the party responsible for compliance could void the user's authority to operate the equipment.

For the receiver devices associated with the operation of a licensed radio service (e.g. FM broadcast), they bear the following statement: This device complies with Part 15 of the FCC Rules. Operation is subject to the condition that this device does not cause harmful interference.

For other devices, they bear the following statement:

This device complies with Part 15 of the FCC Rules. Operation is subject to the following two conditions:

- this device may not cause harmful interference
- this device must accept any interference received, including interference that may cause undesired operation.


20

21

I cannot find my contacts

- Make sure your SIM card is not broken.
- Make sure your SIM card is inserted properly.
- Import all contacts stored in SIM card to phone.

The sound quality of the calls is poor

- You can adjust the volume during a call by pressing the **Up/Down** key.
- Check the network strength .
- Make sure that the receiver, connector or speaker on your phone is clean.

I am unable to use the features described in the manual

- Check with your operator to make sure that your subscription includes this service.
- Make sure this feature does not require an ALCATEL ONETOUCH accessory.

When I select a number from my contacts, the number cannot be dialed

- Make sure that you have correctly recorded the number in your file.
- Make sure that you have selected the country prefix when calling a foreign country.

I am unable to add a contact in my contacts

- Make sure that your SIM card contacts are not full; delete some files or save the files in the phone contacts (i.e. your professional or personal directories).

My callers are unable to leave messages on my voice mail

- Contact your network operator to check service availability.

I cannot access my voice mail

- Make sure your operator's voice mail number is correctly entered in "Voice mail number".

- Try later if the network is busy.

SIM card PIN locked

- Contact your network operator to obtain the PUK code (Personal Unblocking Key).

Your mobile phone is equipped with a built-in antenna. For optimal operation, you should avoid touching it or degrading it. As mobile devices offer a range of functions, they can be used in positions other than against your ear. In such circumstances the device will be compliant with the guidelines when used with headset or usb data cable. If you are using another accessory ensure that whatever product is used is free of any metal and that it positions the mobile phone at least 10 mm away from the body.

FCC ID:2ACCJB019

• **LICENCES**



microSD Logo is a trademark.

^[1] Contact your network operator to check service availability.