

Job Name \_\_\_\_\_

Purchaser \_\_\_\_\_

Submitted to \_\_\_\_\_

Unit Designation \_\_\_\_\_

Location \_\_\_\_\_

Engineer \_\_\_\_\_

Reference \_\_\_\_\_ Approval \_\_\_\_\_ Construction \_\_\_\_\_

Schedule # \_\_\_\_\_

Specifications

Model	US Code		CNH18LDB
	Model Number		AC018BNLDCH/AA
Performance	Nominal Capacity	Cooling (Btu/h)	18,000
		Heating (Btu/h)	20,000
Power	Voltage (øV/Hz)		1 / 208-230 / 60
	Nominal Running Current (A)		1.06
Fan	Type		Sirocco (2)
	Motor	Type	BLDC (1)
		FLA / Output	1.06A / 84 W
Airflow	CFM	L/M/H	353 / 459 / 600
External Static Pressure	Standard	"WC	0.1
	Min / Max.	"WC	0 / 0.24
Refrigerant	Type		R410A
	Control Method		Electronic Expansion Valve (at outdoor unit)
Piping Connections	Liquid (flare)	Inches	1/4
	Suction (flare)	Inches	1/2
	Drain	Inches	OD 1 1/4, ID 1
Unit Dimensions	W X H X D	Inches	35 7/16 X 7 13/16 X 17 5/16
	Weight	lbs.	41.7
	Duct Connections W X H (refer to drawing)	Supply (inches)	37 1/16 X 5 7/8
		Return (inches)	38 1/2 X 6 5/8 (inside)
Sound Level	L / M / H	dB(A)	28 / 32 / 35
Accessories	Wired Controllers	Advanced	MWR-WG00UN
		Simple Touch	MWR-SH11UN
	Wireless Signal Receiver		MRK-A10N
	Wireless Remote Controller <sup>1</sup>		AR-EH04U
	24VAC Thermostat Adapter		MIM-A60UN
	Filter Box		FB-SLIM3
	Wi-Fi Adapter For Remote Control <sup>2</sup>		MIM-H04UN
	External Temperature Sensor		MRW-TA
	External Contact Control Interface Module		MIM-B14
	CN83 Pigtail		DB39-01263A
Safety Certifications	Line sets - insulated and flared, interconnect cables included		25' - ILS2507
			50' - ILS5007
Safety Certifications			ETL (UL 1995)



- High-voltage terminal block temperature sensor to disable unit in the event overheating of power connection.
- Built in condensate pump with maximum 29" lift from the bottom of the unit, check valve, and float switch that disables indoor unit during overflow detection.
- System energy consumption can be viewed using the Samsung SmartThings mobile app (not revenue grade, for reference only)
- The indoor unit shall be powered by the outdoor unit

**Construction**  
The unit shall be constructed of insulated, galvanized steel

**Heat Exchanger**  
The heat exchanger shall be mechanically bonded fin to copper tube

**Indoor Fan**  
Indoor fan is a twin, backward curved centrifugal type with a single fan motor

Three fan speed settings and auto setting

**Controls**  
Control signal shall be a DDC type signal

Interconnect control wire between outdoor and indoor shall be 16AWG X 2

Dual set temperature support when connected to MWR-WG00UN Advanced Wired Controller.

The system shall integrate with the Samsung Controls Solution.

**Air Filtration**  
The unit includes a simple filter as standard. Field provided filtration is recommended.

Pressure drop across the filter must be factored into the total ESP.

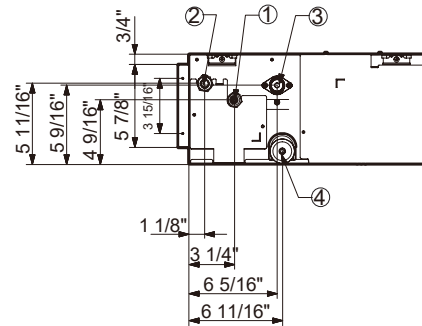
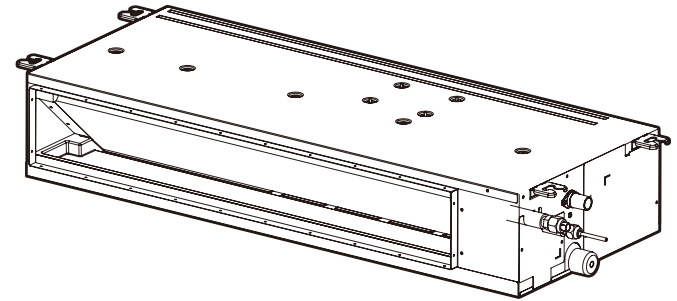
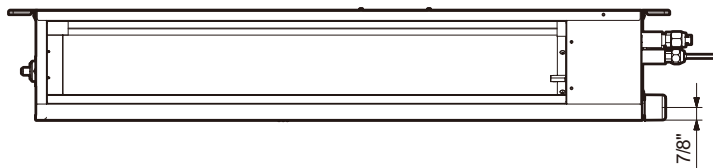
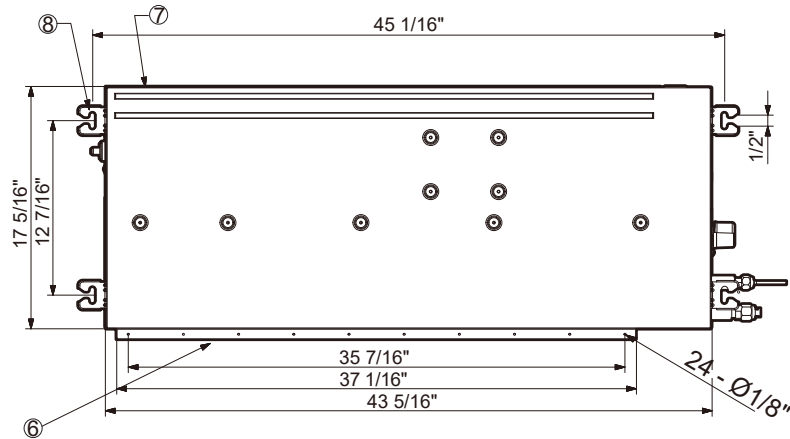
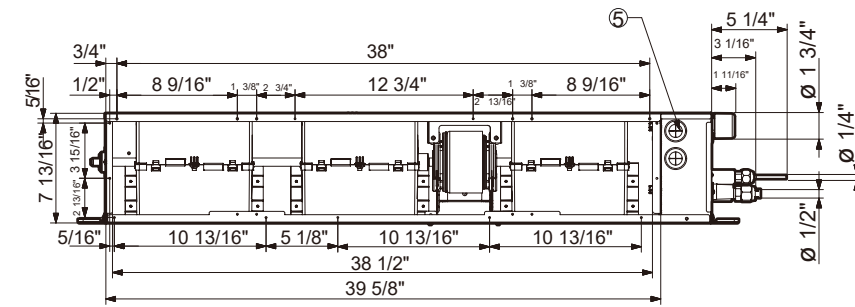
**Compatibility**  
Will only operate with Samsung outdoor unit model numbers:  
AC018BXADCH/AA (CXH18ADB), AJ024BXJ3CH/AA (JXH24J3B), AJ036BXJ4CH/AA (JXH36J4B), AJ048BXJ5CH/AA (JXH48J5B), AJ024BXS4CH/AA (JXH24S4B), AJ030BXS4CH/AA (JXH30S4B), AJ036BXJ4CH/AA (JXH36J4B), AJ036BXS4CH/AA (JXH36S4B), AJ048BXJ5CH/AA (JXH48J5B)

**ATTENTION**  
This air handling unit is intended for free-air discharge or for connection to a duct supplying only one room. Improper installation could contribute to the spread of smoke or flame in the event of a fire.

Nominal cooling capacities are based on: Indoor temperature: 80 °F DB, 67°F WB. Outdoor temperature: 95°F DB, 75°F WB.  
Nominal heating capacities are based on: Indoor temperature: 70 °F DB, 60°F WB. Outdoor temperature: 47°F DB, 43°F WB.  
Samsung HVAC maintains a policy of ongoing development, specifications are subject to change without notice.

<sup>1</sup> Requires the installation of MRK-A10N wireless signal receiver.

<sup>2</sup> MIM-H04UN is only required for remote control of cassette, console, and duct indoor units. Only one per system is required.



No.	Description
1	Suction pipe connection
2	Liquid pipe connection
3	Drain connection (when using integral drain pump)
4	Gravity drain connection
5	Opening for power and communication wire conduit
6	Supply air outlet flange
7	Return air (air inlet)
8	Suspension bolt anchor point