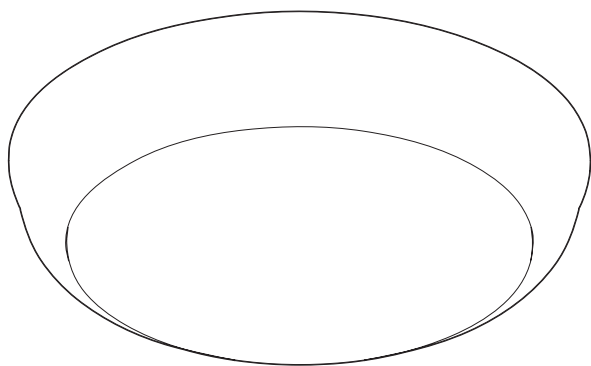



LEDVALUE IP65 OYSTER

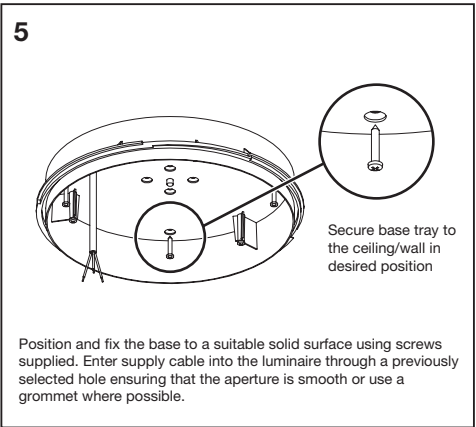
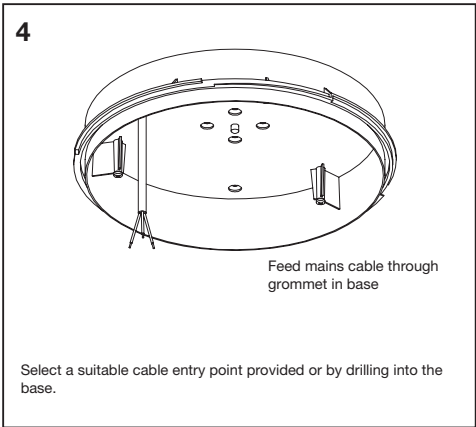
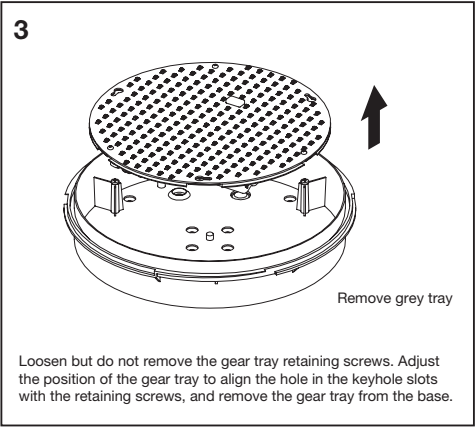
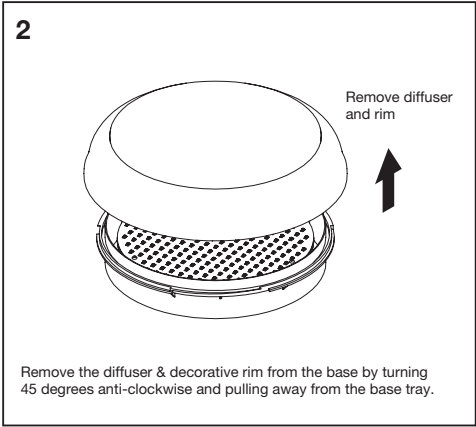
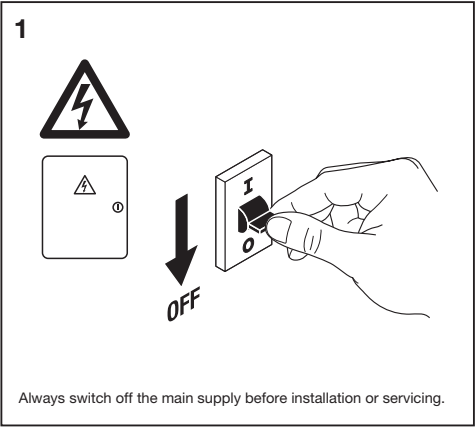
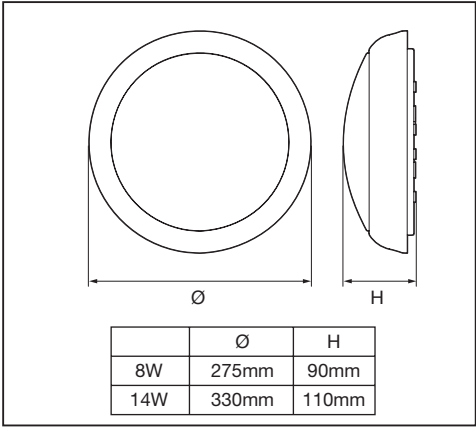


MODEL	EAN	W	K	lm	lm/W	IP	IK		PF	Ta (°C)	Vac	Hz
LDV08WTRI	4058075392083	8	TRI	500/560	63/70	65	08	120°	0.5	-20...+40	220-240	50/60
LDV014WTRI	4058075392106	14	TRI	1000/1100	71/79	65	08	120°	0.5	-20...+40	220-240	50/60
LDV08W830	4058075390720	8	3000	500	63	65	08	120°	0.5	-20...+40	220-240	50/60
LDV08W840	4058075390744	8	4000	560	70	65	08	120°	0.5	-20...+40	220-240	50/60
LDV08W865	4058075390768	8	6500	560	70	65	08	120°	0.5	-20...+40	220-240	50/60
LDV014W830	4058075390782	14	3000	1000	71	65	08	120°	0.5	-20...+40	220-240	50/60
LDV014W840	4058075391321	14	4000	1100	79	65	08	120°	0.5	-20...+40	220-240	50/60
LDV014W865	4058075391345	14	6500	1100	79	65	08	120°	0.5	-20...+40	220-240	50/60



LEDVANCE

LEDVALUE IP65 OYSTER



6

Terminate the cable into the terminal block mounted on the underside of the gear tray ensuring the correct polarity is observed and the luminaire is fully earthed. Ensure all conductors are fully sleeved and insulated.

7

Re-install the gear tray into position

Dress any cables away from the edge of the luminaire and re-align the gear tray.

8

Re-install diffuser and gear tray

Re-fit front diffuser. Restore electricity and check illumination.

9

Switch the luminaire on.

LEDVALUE IP65 OYSTER

WARNINGS:

- This product must be installed by a licensed electrician strictly in accordance with the current revision of AS/NZS 3000 - Electrical Installations (Australian/New Zealand Wiring Rules).
- Avoid touching the LEDs.
- Please do not attempt to disassemble or change the construction of the luminaire or replace any of the parts to avoid the possibility of injury or product failure.
- Please keep this manual for future reference.
- This product is designed for indoor use only. It is not intended for installation in wet areas or where the location is exposed to the elements.
- This luminaire is designed for ceiling installation only. Do not install on wall.
- The light source contained in this luminaire shall only be replaced by the manufacturer or service agent or a similar qualified person.
- Please note that the fixture is equipped with standard surge protection only. To protect the fixture from sags, surges, and lightning strikes, additional surge protectors must be deployed on the primary side.



WARRANTY AGAINST DEFECTS:

Your LEDVALUE IP65 OYSTER fitting from LEDVANCE comes with a product warranty ("Warranty") for quality assurance, the terms and conditions of which are set out in this document. The Warranty applies exclusively to LED Light Fittings from LEDVANCE purchased within Australia and New Zealand for normal domestic or commercial use. The Warranty is offered to you by:

LEDVANCE Pty Ltd
Suite 2.1A, 394 Lane Cove Road
Macquarie Park NSW 2113
Phone contact: 1300 467 726 or +61 2 9481 780
Email address: technical.au@ledvance.com

IMPORTANT: Our goods come with guarantees that cannot be excluded under the Australian Consumer Law. You are entitled to a replacement or refund for a major failure and compensation for any other reasonably foreseeable loss or damage. You are also entitled to have the goods repaired or replaced if the goods fail to be of acceptable quality and the failure does not amount to a major failure.

LEDVANCE Pty Ltd
ABN 34 050 103 181
Suite 2.1A
394 Lane Cove Road
Macquarie Park NSW 2113
Australia
Ph +61 29481 8399
www.ledvance.com.au

Outdoor use

IP65 IK08



C10449057
G11086927
2019-11-13

www.ledvance.com.au