



# UniFlood M G2

**BVP354 120LED 40K 220V L50 45**

22085 lm - 240 W - 4000 K

The Philips UniFlood M gen2 is a cost-effective, exterior-rated architectural LED floodlight that's designed for façade, landscape and outdoor floodlighting applications. The robust, modular, rectangular design features highly-efficient optics, making it ideal for illuminating everything from multi-storey façades and bridges to landmarks and monuments. This LED floodlight is available in white, monochromatic colours, RGB, RGBW and tunable white. It comes with six different spread lenses ranging from narrow spot to wide flood and has DMX512/RDM control option. A truly modular floodlight that gives architects and designers the freedom to explore a wide range of concepts and designs with no limitations.

## Warnings and Safety

- For outdoor use only.

## Product data

General information	
Light source colour	840 neutral white
Driver included	Yes
Optical cover/lens type	GC [ Clear glass]
Control interface	-
Connection	Flying leads/cables
Cable	Cable without plug 3-pole
Protection class IEC	Safety class I
Flammability mark	F [ For mounting on normally flammable surfaces]
CE mark	CE mark
Operating and electrical	
Input Voltage	220 to 240 V

Input frequency	50 to 60 Hz
Inrush current	60 A
Power factor (min.)	0.9
Controls and dimming	
Dimmable	No
Mechanical and housing	
Housing material	Extruded aluminium
Optical cover/lens material	Acrylate
Overall length	486 mm
Overall width	304 mm
Overall height	231 mm

## UniFlood M G2

Effective projected area	0.156 m <sup>2</sup>
Colour	Dark Grey
Dimensions (height x width x depth)	231 x 304 x 486 mm
<b>Approval and application</b>	
Ingress protection code	IP66 [ Dust penetration-protected, jet-proof]
Mech. impact protection code	IK06 [ 1 J]
<b>Initial performance (IEC compliant)</b>	
Initial luminous flux (system flux)	22085 lm
Luminous flux tolerance	+/-10%
Initial LED luminaire efficacy	92 lm/W
Init. Corr. Colour Temperature	4000 K
Init. Colour rendering index	>80
Initial chromaticity	4 SDCM
Initial input power	240 W
Power consumption tolerance	+/-10%

### Application conditions

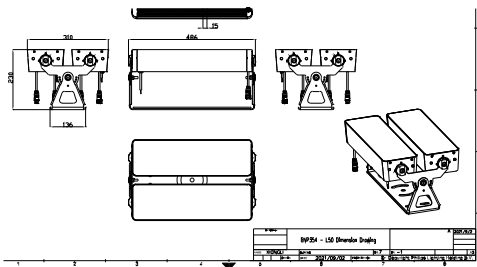
Ambient temperature range	-40 to +50 °C
---------------------------	---------------

### Product data

Full product code	871951492852700
Order product name	BVP354 120LED 40K 220V L50 45
EAN/UPC – product	8719514928527
Order code	92852700
SAP numerator – quantity per pack	1
Numerator – packs per outer box	1
SAP material	911401749313
Net Weight (Piece)	13.000 kg



### Dimensional drawing



BVP354 120LED 40K 220V L50 45

