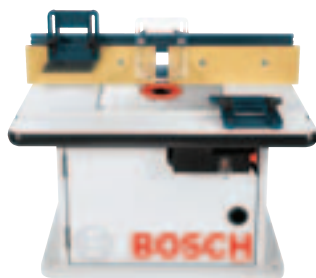


## Router Tables

### RA1171 Benchtop Router Table



- ▶ Smooth laminated top for precision woodworking with 25" x 15-1/2" work surface
- ▶ 4-7/8" x 25-1/8" aluminum fence with adjustable MDF face plates. Outfeed can be offset for jointing
- ▶ Rigid aluminum router mounting plate pre-drilled for a wide variety of routers
- ▶ Starter pin and guard included. Offers support for routing curved work pieces
- ▶ Dust ports on fence and in cabinet fit standard 2-1/2" vacuum hoses
- ▶ Two adjustable featherboards mount on fence or table to guide work
- ▶ Dual outlet switch with 6' power cord. Lock helps prevent unauthorized use

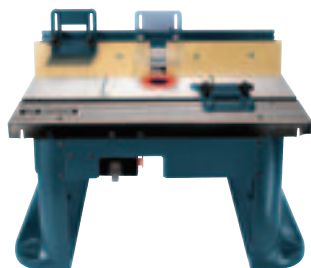
Specifications	
Height	14-1/2"
Depth	15-7/8"
Width	25-1/2"
Max. Fence Opening	3-3/16"
Max. Throat Opening	3-5/8"
Cord Length	6"

#### Includes

(2) Adjustable Featherboards **2610927685**  
 (3) Mounting Plate Insert Rings to Adjust Opening Bit Size **2610915125**  
 Adjustable Clear Guard **2610927687**  
 Starter Pin **2610927738**  
 Starter Pin Guard **2610915134**  
 (2) Outfeed Fence Shims—1/16" thick **2610927690**  
 Hardware for Mounting Routers

7

### RA1181 Benchtop Router Table



- ▶ Large precision machined 27" x 18" aluminum work surface
- ▶ 4-7/8" x 25-1/8" aluminum fence with adjustable MDF face plates. Outfeed can be offset for jointing
- ▶ Rigid aluminum router mounting plate pre-drilled for a wide variety of routers
- ▶ Starter pin and guard included. Offers support for routing curved work pieces
- ▶ Dust collection port on fence fits standard 2-1/2" vacuum hoses
- ▶ Two adjustable featherboards mount on fence or table to guide work
- ▶ Dual outlet switch with 6' power cord. Lock helps prevent unauthorized use

Specifications	
Height	14-1/2"
Depth	18"
Width	27"
Max. Fence Opening	3-3/16"
Max. Throat Opening	3-5/8"
Cord Length	6"

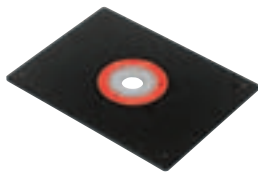
#### Includes

(2) Adjustable Featherboards **2610927685**  
 (3) Mounting Plate Insert Rings to Adjust Opening Bit Size **2610915125**  
 Adjustable Clear Guard **2610927687**  
 Starter Pin **2610927738**  
 Starter Pin Guard **2610915134**  
 (2) Outfeed Fence Shims—1/16" thick **2610927690**  
 Hardware for Mounting Routers

## Router Table Accessory

### Mounting Plate

- ▶ For use with RA1200
- ▶ Strong thermoset 3/8" thick phenolic mounting plate
- ▶ Ready to be drilled to accept most routers (except D-handle models)



Item #	Includes
RA1250	Corner mounts and insert rings