

100*80mm

128g 铜板纸

3折页, 双面印刷

英文

Instruction manual

Fold 3-in-1 wireless charger

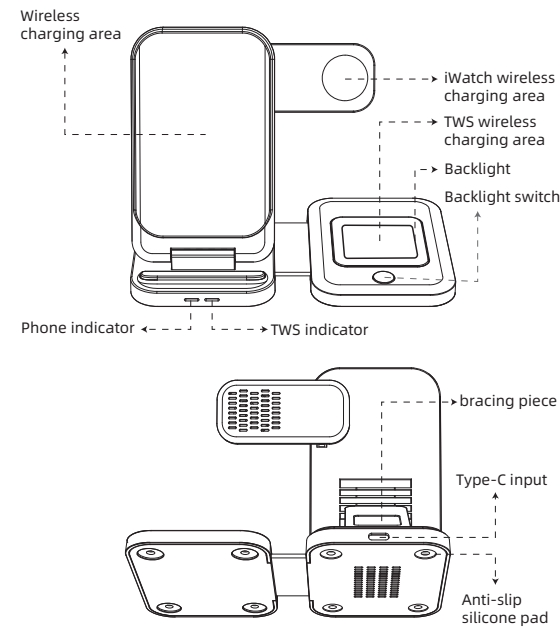


FCC Warning Statement

Changes or modifications not expressly approved by the party responsible for compliance could void the user's authority to operate the equipment. This equipment has been tested and found to comply with the limits for a Class B digital device, pursuant to Part 15 of the FCC Rules. These limits are designed to provide reasonable protection against harmful interference in a residential installation. This equipment generates uses and can radiate radio frequency energy and, if not installed and used in accordance with the instructions, may cause harmful interference to radio communications. However, there is no guarantee that interference will not occur in a particular installation. If this equipment does cause harmful interference to radio or television reception, which can be determined by turning the equipment off and on, the user is encouraged to try to correct the interference by one or more of the following measures:

- - Reorient or relocate the receiving antenna.
- - Increase the separation between the equipment and receiver.
- - Connect the equipment into an outlet on a circuit different from that to which the receiver is connected.
- - Consult the dealer or an experienced radio/TV technician for help.

Product appearance



Instructions for use

1. Please connect this wireless charger to the 5V3A, 9V/3A adapter through the Type-c fast charging cable and connect the source
2. Put the phone in the mobile phone charging area and the mobile phone can be charged
3. Place the watch in the watch charging area to charge the watch
4. Put the wireless charging Bluetooth earphone box in the earphone charging area to charge the earphone

LED status

mode	TWS indicator	Phone indicator
Power	Bright blue light	Bright blue light
Standby	The blue light is always on	The blue light is always on
TWS charging	Blue light to green light	Blue light standby
Phone charging	Blue light standby	Blue light to green light
Protection features	The blue light flashes	Blue light flashes
full	The lights go out	The lights go out

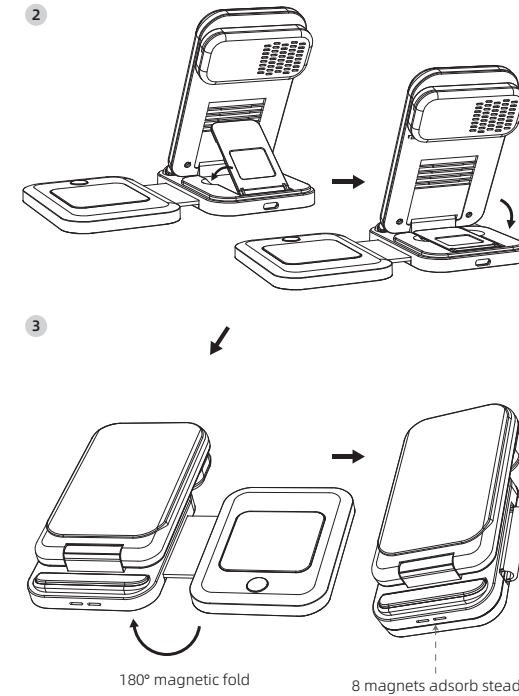
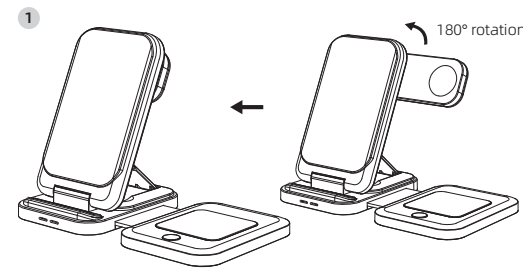
note !

In order to ensure the safety and efficiency of charging three devices at the same time, it is recommended to use adapters and fast charging cables above 9V/2A, such as mobile phone fast charging part power to reach 15W, you must use 9V/3A or 12V/2A adapters and fast charging cables. (If you use an adapter below 5V/2A, this charger may not be able to charge three devices at the same time)

Product parameters

Name	Fold 3-in-1 wireless charger	Input	DC5V/3A 9V/3A
Product size	130*78*29mm	Output (phone)	5W/7.5W/10W/15W(Max)
Material	ABS+PC	Output (TWS)	5W(Max)
Wireless charging effective distance	≤6mm	Output (iWatch)	2.5W(Max)

Fold Operating instructions



Notes

Applicable equipment

Please check whether the mobile phone supports wireless charging. This product supports fast wireless charging function and conforms to Qi wireless charging standards; By magnetic induction Enables short-range wireless power transfer.

Adapter selection

When using a 5V/2A output adapter, the wireless charger supports a 5W load. When using QC3.0 compliant adapters, the wireless charger supports 15W load; *In order to ensure the normal use of the charger, it is recommended to use PD fast charging or QC3.0 compliant adapter

Warn!

Do not put metal debris or magnetic cards on the charging pad, it may cause the charger to heat up! Foreign objects should be removed when alarming! Slight heating is normal, and it will heat up during the charging of the mobile phone battery! Do not place the charger near fire sources or corrosive environments!

Packing list

- Wireless charger X1
- USB cable X1
- Instruction manual X1

