


Latitude 5175

Service Manual

Notes, cautions, and warnings

 **NOTE:** A NOTE indicates important information that helps you make better use of your tablet.

 **CAUTION:** A CAUTION indicates either potential damage to hardware or loss of data and tells you how to avoid the problem.

 **WARNING:** A WARNING indicates a potential for property damage, personal injury, or death.


Chapter 1: Before working inside your tablet	7
Before you begin	7
Safety instructions.....	7
Recommended tools.....	8
Chapter 2: After working inside your tablet	9
Chapter 3: Removing the back cover	10
Procedure.....	10
Chapter 4: Replacing the back cover	12
Procedure.....	12
Chapter 5: Removing the battery	13
Prerequisites.....	13
Procedure.....	13
Chapter 6: Replacing the battery	14
Procedure.....	14
Post-requisites.....	14
Chapter 7: Removing the solid-state drive	15
Prerequisites.....	15
Procedure.....	15
Chapter 8: Replacing the solid-state drive	17
Procedure.....	17
Post-requisites.....	18
Chapter 9: Removing the wireless card	19
Prerequisites.....	19
Procedure.....	19
Chapter 10: Replacing the wireless card	20
Procedure.....	20
Post-requisites.....	21
Chapter 11: Removing the tablet bezel	22
Prerequisites.....	22
Procedure.....	22
Chapter 12: Replacing the tablet bezel	24
Procedure.....	24

Post-requisites.....	24
Chapter 13: Removing the docking connector board.....	25
Prerequisites.....	25
Procedure.....	25
Chapter 14: Replacing the docking connector board.....	26
Procedure.....	26
Post-requisites.....	26
Chapter 15: Removing the coin-cell battery.....	27
Prerequisites.....	27
Procedure.....	27
Chapter 16: Replacing the coin-cell battery.....	28
Procedure.....	28
Post-requisites.....	28
Chapter 17: Removing the speakers.....	29
Prerequisites.....	29
Procedure.....	29
Chapter 18: Replacing the speakers.....	30
Procedure.....	30
Post-requisites.....	30
Chapter 19: Removing the I/O board.....	31
Prerequisites.....	31
Procedure.....	31
Chapter 20: Replacing the I/O board.....	32
Procedure.....	32
Post-requisites.....	32
Chapter 21: Removing the front camera.....	33
Prerequisites.....	33
Procedure.....	33
Chapter 22: Replacing the front camera.....	34
Procedure.....	34
Post-requisites.....	34
Chapter 23: Removing the back camera.....	35
Prerequisites.....	35
Procedure.....	35
Chapter 24: Replacing the back camera.....	37
Procedure.....	37

Post-requisites.....	37
Chapter 25: Removing the system board.....	38
Prerequisites.....	38
Procedure.....	38
Chapter 26: Replacing the system board.....	42
Procedure.....	42
Post-requisites.....	42
Chapter 27: Removing the display assembly.....	43
Prerequisites.....	43
Procedure.....	43
Chapter 28: Replacing the display assembly.....	44
Procedure.....	44
Post-requisites.....	44
Chapter 29: Flashing the BIOS.....	45
Clearing CMOS.....	45
Chapter 30: Technology and components.....	46
Power adapter.....	46
Processors.....	46
Identifying processors in Windows 10.....	46
Identifying processors in Windows 8.....	47
Verifying the processor usage in Task Manager.....	47
Verifying the processor usage in Resource Monitor.....	47
Chipsets.....	48
Downloading the chipset driver.....	48
Identifying the chipset in Device Manager on Windows 10.....	48
Identifying chipset in Device Manager on Windows 8.....	49
Graphic options.....	50
Downloading Driver.....	50
Identifying the display adapter.....	51
Changing the screen resolution.....	51
Rotating the display.....	51
Display options.....	51
Adjusting brightness in Windows 10.....	52
Adjusting brightness in Windows 8.....	52
Cleaning the display.....	52
Using touch screen in Windows 10.....	52
Using touch screen in Windows 8.....	52
Connecting to external display devices.....	53
Realtek ALC3266–CG Waves MaxxAudio Pro controller.....	53
Downloading the audio driver.....	53
Identifying the audio controller in Windows 10.....	53
Identifying the audio controller in Windows 8.....	54
Changing the audio settings.....	54

WLAN cards.....	54
Downloading the WLAN driver.....	54
Hard drive options.....	54
Identifying the hard drive in Windows 10.....	54
Identifying the hard drive in Windows 8.....	55
Entering BIOS setup.....	55
Camera features.....	55
Identifying the camera in Device Manager on Windows 10.....	55
Identifying the camera in Device Manager on Windows 8.....	56
Starting the camera.....	56
Starting the camera application.....	56
Memory features.....	57
Verifying system memory in Windows 10.....	57
Verifying system memory in Windows 8.....	57
Verifying system memory in setup.....	57
Testing memory using ePSA.....	57
Intel chipset drivers.....	58
Intel HD Graphics drivers.....	58
Realtek HD audio drivers.....	58
Realtek RTS5242-GR Card Reader drivers.....	59
Realtek LAN network drivers.....	59
Intel Wireless 3165 WiFi and Bluetooth drivers.....	59
Chapter 31: System LED diagnostics.....	60
Chapter 32: Getting help and contacting Dell.....	61




Before working inside your tablet

 **NOTE:** The images in this document may differ from your tablet depending on the configuration you ordered.

Topics:


- [Before you begin](#)
- [Safety instructions](#)
- [Recommended tools](#)


Before you begin

1. Save and close all open files and exit all open applications.
 2. Shut down your tablet.
 - Windows 10: Click or tap **Start** >  **Power** > **Shut down**.
 - Windows 8: Click or tap  **Power Shut down**
-  **NOTE:** If you are using a different operating system, see the documentation of your operating system for shut-down instructions.
3. Disconnect your tablet and all attached devices from their electrical outlets.
 4. Disconnect all cables such as telephone cables, network cables and so on, from your tablet.
 5. Disconnect all attached devices and peripherals, such as keyboard, mouse, monitor, and so on, from your tablet.
 6. Remove any media card and SIM card from your tablet, if applicable.

Safety instructions


Use the following safety guidelines to protect your tablet from potential damage and ensure your personal safety.


 **NOTE:** Before working inside your tablet, read the safety information that shipped with your tablet and follow the steps in [Before working inside your tablet](#). After working inside your tablet, follow the instructions in [After working inside your tablet](#). For more safety best practices, see the Regulatory Compliance home page at www.dell.com/regulatory_compliance.


 **NOTE:** Disconnect all power sources before opening the tablet cover or panels. After you finish working inside the tablet, replace all covers, panels, and screws before connecting to the power source.

 **CAUTION:** To avoid damaging the tablet, ensure that the work surface is flat and clean.

 **CAUTION:** To avoid damaging the components and cards, handle them by their edges and avoid touching pins and contacts.

 **CAUTION:** You should only perform troubleshooting and repairs as authorized or directed by the Dell technical assistance team. Damage due to servicing that is not authorized by Dell is not covered by your warranty. See the safety instructions that shipped with the product or at www.dell.com/regulatory_compliance.

 **CAUTION:** Before touching anything inside your tablet, ground yourself by touching an unpainted metal surface. While you work, periodically touch an unpainted metal surface to dissipate static electricity, which could harm internal components.

 **CAUTION:** When you disconnect a cable, pull on its connector or on its pull tab, not on the cable itself. Some cables have connectors with locking tabs or thumb-screws that you must disengage before disconnecting

the cable. When disconnecting cables, keep them evenly aligned to avoid bending any connector pins. When connecting cables, ensure that the ports and connectors are correctly oriented and aligned.

 **CAUTION:** Press and eject any installed card from the media-card reader.

Recommended tools

The procedures in this document may require the following tools:

- Phillips screwdriver
 - #0 Phillips head screwdriver
 - #1 Phillips head screwdriver
- Plastic scribe

After working inside your tablet

 **CAUTION:** Leaving stray or loose screws inside your tablet may severely damage your tablet.

1. Replace all screws and ensure that no stray screws remain inside your tablet.
2. Connect any external devices, peripherals, and cables that you removed before working on your tablet.
3. Replace any media card, SIM card, and any other parts that you removed before working on your tablet.
4. Connect your tablet and all attached devices to their electrical outlets.
5. Turn on your tablet.

Removing the back cover

NOTE: Before working inside your tablet, read the safety information that shipped with your tablet and follow the steps in [Before working inside your tablet](#). After working inside your tablet, follow the instructions in [After working inside your tablet](#). For more safety best practices, see the Regulatory Compliance home page at www.dell.com/regulatory_compliance.

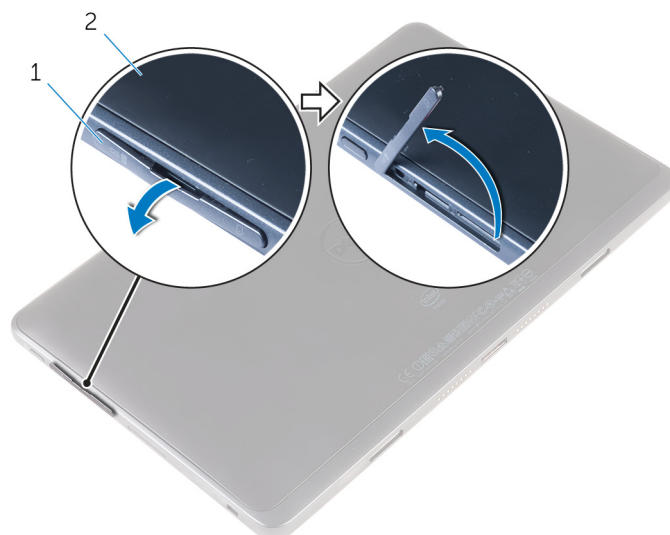
Topics:

- [Procedure](#)

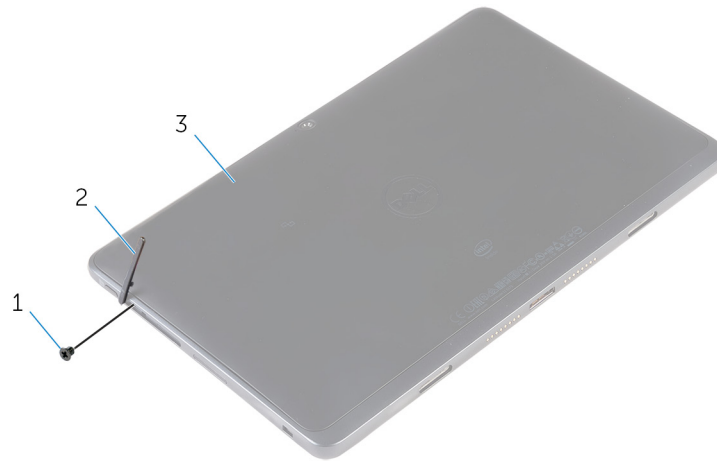
Procedure

CAUTION: Before opening your tablet, ensure that you place the tablet on a soft cloth or clean surface to avoid any scratches on the display.

1. Place the tablet on a flat surface with the display facing down.
2. Open the slot cover and turn it at an angle.

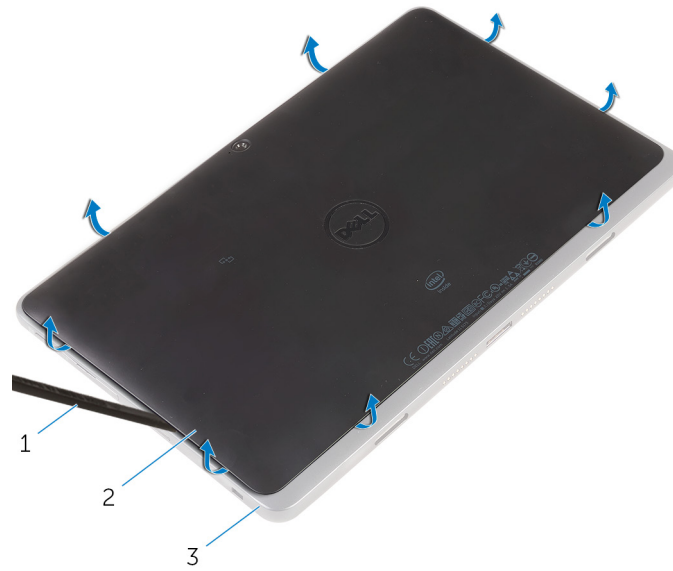


- a. slot cover
 - b. back cover
3. Remove the screw that secures the back cover to the display assembly.



- a. screw
- b. slot cover
- c. back cover

- 4. Using a plastic scribe, pry up along the edges of the back cover.
- 5. Lift the back cover off the display assembly.



- a. plastic scribe
- b. back cover
- c. display assembly

Replacing the back cover

NOTE: Before working inside your tablet, read the safety information that shipped with your tablet and follow the steps in [Before working inside your tablet](#). After working inside your tablet, follow the instructions in [After working inside your tablet](#). For more safety best practices, see the Regulatory Compliance home page at www.dell.com/regulatory_compliance.

Topics:

- [Procedure](#)

Procedure

1. Align the tabs on the back cover with the slots on the display assembly and snap it into place.
2. Replace the screw that secures the back cover to the display assembly.
3. Align the slot cover with the display assembly and snap it into place.
4. Turn the tablet over.

Removing the battery

NOTE: Before working inside your tablet, read the safety information that shipped with your tablet and follow the steps in [Before working inside your tablet](#). After working inside your tablet, follow the instructions in [After working inside your tablet](#). For more safety best practices, see the Regulatory Compliance home page at www.dell.com/regulatory_compliance.

Topics:

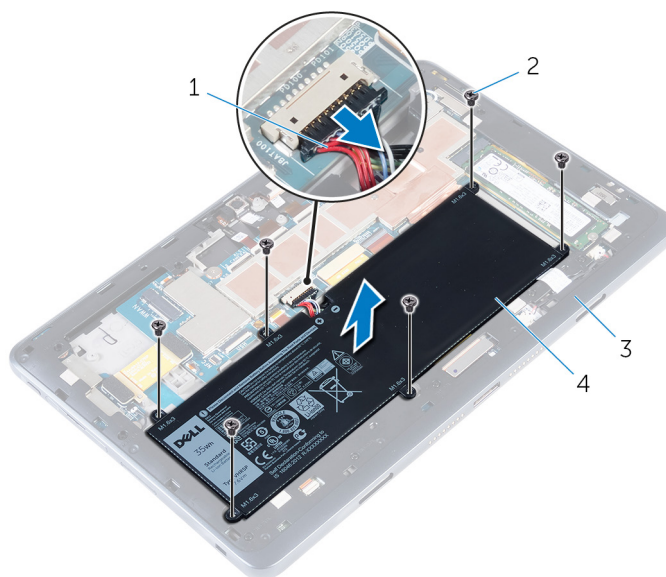
- [Prerequisites](#)
- [Procedure](#)

Prerequisites

Remove the [back cover](#).

Procedure

1. Remove the screws that secure the battery to the display assembly.
2. Disconnect the battery cable from the system board.
3. Lift the battery, along with its cable, off the display assembly.



1. battery cable
2. screws (6)
3. display assembly
4. battery

4. Press and hold the power button for 5 seconds, to ground the system board.

Replacing the battery

NOTE: Before working inside your tablet, read the safety information that shipped with your tablet and follow the steps in [Before working inside your tablet](#). After working inside your tablet, follow the instructions in [After working inside your tablet](#). For more safety best practices, see the Regulatory Compliance home page at www.dell.com/regulatory_compliance.

Topics:

- [Procedure](#)
- [Post-requisites](#)

Procedure

1. Align the screw holes on the battery with the screw holes on the display assembly.
2. Replace the screws that secure the battery to the display assembly.
3. Connect the battery cable to the system board.

Post-requisites

Replace the [back cover](#).

Removing the solid-state drive

NOTE: Before working inside your tablet, read the safety information that shipped with your tablet and follow the steps in [Before working inside your tablet](#). After working inside your tablet, follow the instructions in [After working inside your tablet](#). For more safety best practices, see the Regulatory Compliance home page at www.dell.com/regulatory_compliance.

CAUTION: Solid-state drives are fragile. Exercise care when handling the hard drive.

CAUTION: To avoid data loss, do not remove the solid-state drive while the tablet is in sleep or on state.

Topics:

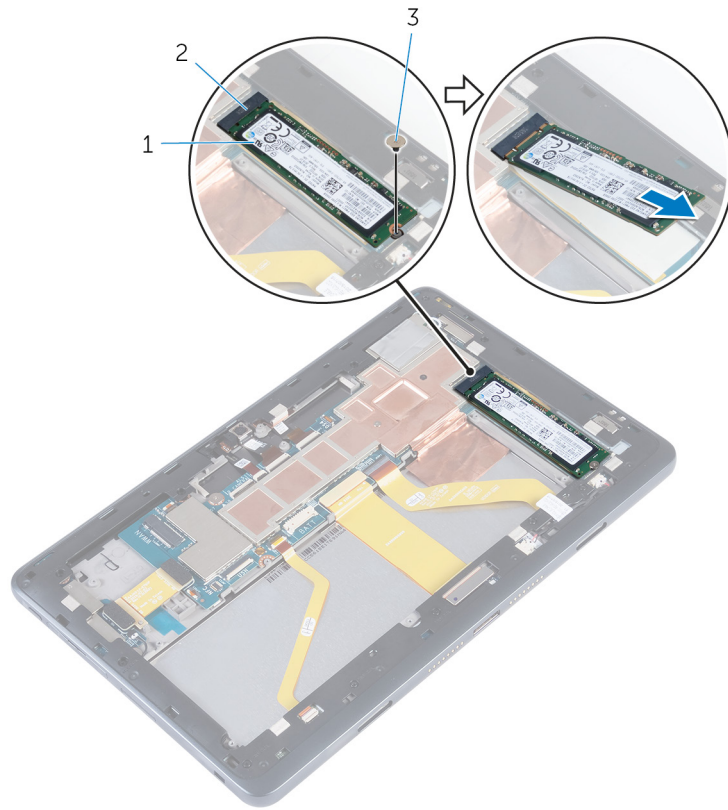
- [Prerequisites](#)
- [Procedure](#)

Prerequisites

1. Remove the [back cover](#).
2. Remove the [battery](#).

Procedure

1. Remove the screw that secures the solid-state drive to the system board.
2. Lift and slide the solid-state drive out of the slot on the system board.



- a. solid-state drive
- b. solid-state drive slot
- c. screw

Replacing the solid-state drive

NOTE: Before working inside your tablet, read the safety information that shipped with your tablet and follow the steps in [Before working inside your tablet](#). After working inside your tablet, follow the instructions in [After working inside your tablet](#). For more safety best practices, see the Regulatory Compliance home page at www.dell.com/regulatory_compliance.

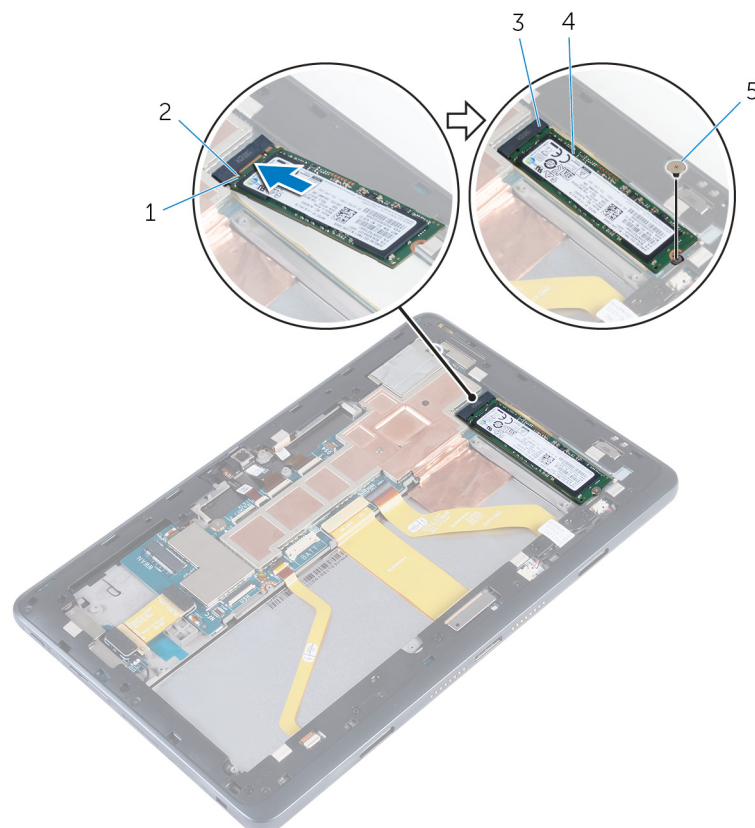
CAUTION: Solid-state drives are fragile. Exercise care when handling the hard drive.

Topics:

- [Procedure](#)
- [Post-requisites](#)

Procedure

1. Align the notch on the solid-state drive with the tab on the solid-state drive slot.
2. Slide the solid-state drive firmly into the slot at an angle and align the screw hole on the solid-state drive with the screw hole on the system board.
3. Replace the screw that secures the solid-state drive to the system board.



1. notch
3. solid-state drive slot
5. screw

2. tab
4. solid-state drive

Post-requisites

1. Replace the [battery](#).
2. Replace the [back cover](#).

Removing the wireless card

NOTE: Before working inside your tablet, read the safety information that shipped with your tablet and follow the steps in [Before working inside your tablet](#). After working inside your tablet, follow the instructions in [After working inside your tablet](#). For more safety best practices, see the Regulatory Compliance home page at www.dell.com/regulatory_compliance.

Topics:

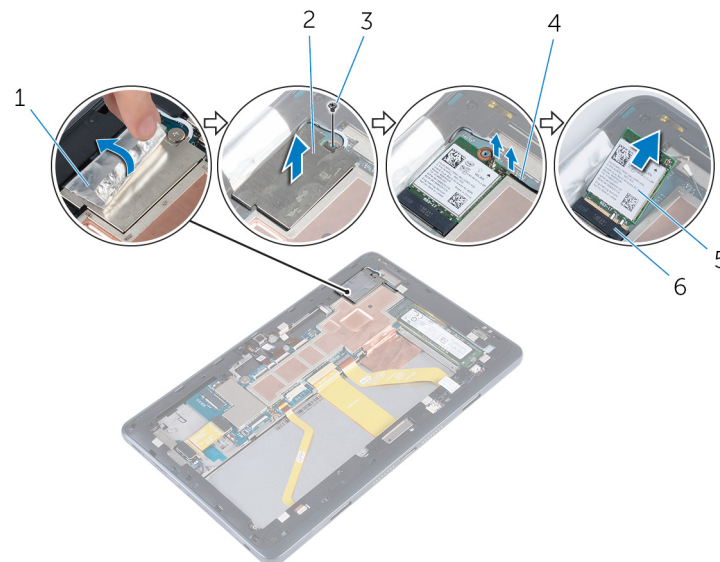
- [Prerequisites](#)
- [Procedure](#)

Prerequisites

Remove the [back cover](#).

Procedure

1. Peel off the foil that secures the wireless-card bracket and wireless card to the system board.
2. Remove the screw that secures the wireless-card bracket to the system board.
3. Lift the wireless-card bracket off the wireless card.
4. Disconnect the antenna cables from the wireless card.
5. Slide and remove the wireless card from the wireless-card slot.



- | | |
|------------------|--------------------------|
| 1. foil | 2. wireless-card bracket |
| 3. screw | 4. antenna cables (2) |
| 5. wireless card | 6. wireless-card slot |

Replacing the wireless card

NOTE: Before working inside your tablet, read the safety information that shipped with your tablet and follow the steps in [Before working inside your tablet](#). After working inside your tablet, follow the instructions in [After working inside your tablet](#). For more safety best practices, see the Regulatory Compliance home page at www.dell.com/regulatory_compliance.

Topics:

- [Procedure](#)
- [Post-requisites](#)

Procedure

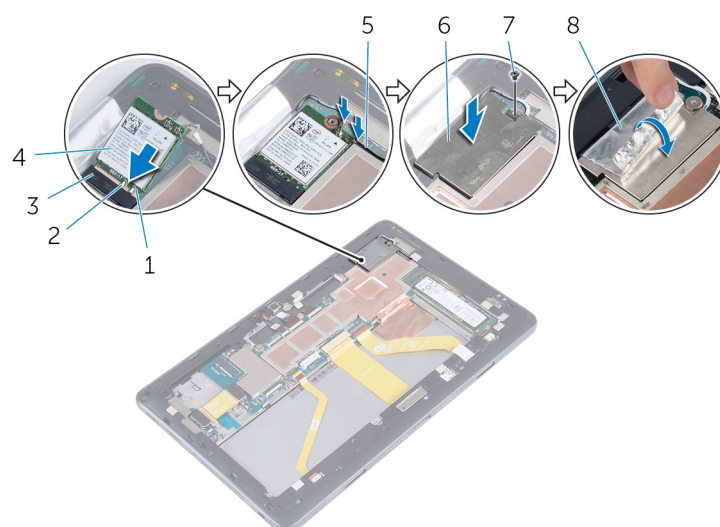
CAUTION: To avoid damage to the wireless card, do not place any cables under it.

1. Align the notch on the wireless card with the tab on the wireless-card slot and slide the card into the wireless-card slot.
2. Connect the antenna cables to the wireless card.

The following table provides the antenna-cable color scheme for the wireless card supported by your tablet:

Connectors on the wireless card	Antenna-cable color
Main (white triangle)	white
Auxiliary (black triangle)	black

3. Place the wireless-card bracket on the wireless card.
4. Align the screw hole on the wireless-card bracket with the screw hole on the system board.
5. Replace the screw that secures the wireless-card bracket and the wireless card to the system board.
6. Adhere the foil that secures the wireless-card bracket and wireless card to the system board.



- | | |
|-----------------------|--------------------------|
| 1. notch | 2. tab |
| 3. wireless-card slot | 4. wireless card |
| 5. antenna cables (2) | 6. wireless-card bracket |
| 7. screw | 8. foil |

Post-requisites

Replace the [back cover](#).

Removing the tablet bezel

NOTE: Before working inside your tablet, read the safety information that shipped with your tablet and follow the steps in [Before working inside your tablet](#). After working inside your tablet, follow the instructions in [After working inside your tablet](#). For more safety best practices, see the Regulatory Compliance home page at www.dell.com/regulatory_compliance.

Topics:

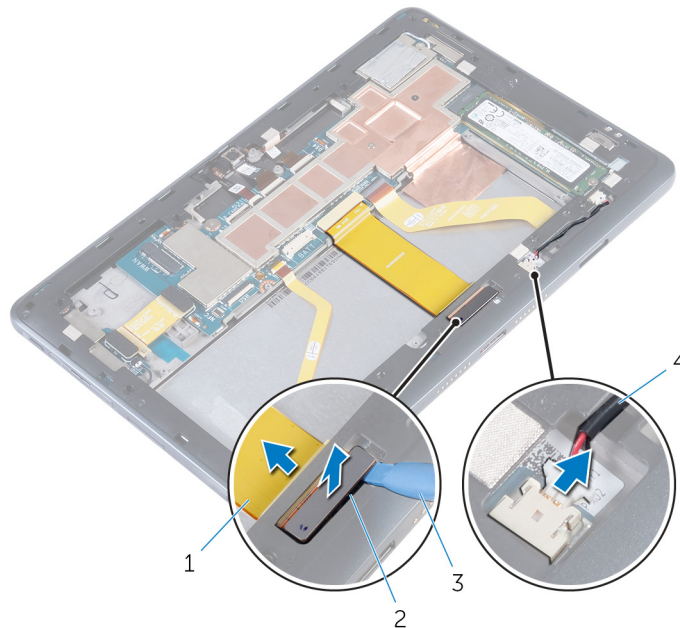
- [Prerequisites](#)
- [Procedure](#)

Prerequisites

Remove the [back cover](#).

Procedure

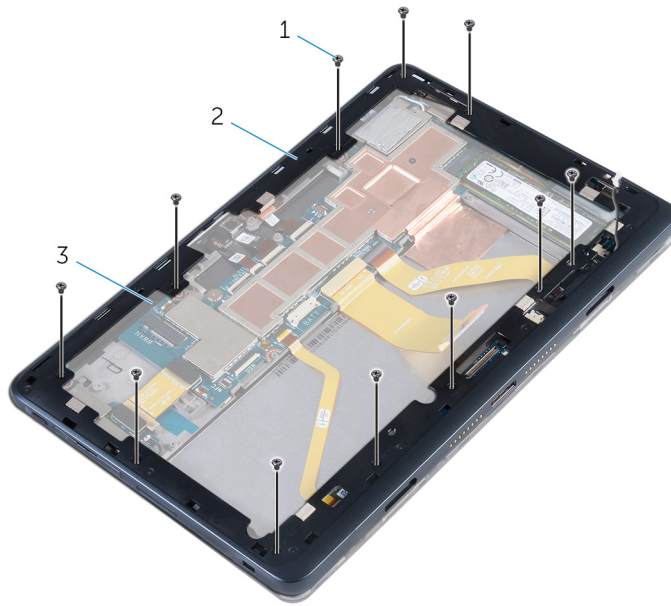
1. Using a plastic scribe, disconnect the docking port ribbon cable and slide it out through the slot on the tablet bezel.
2. Disconnect the docking port cable from the docking connector board on the tablet bezel.



1. docking port ribbon cable
3. plastic scribe

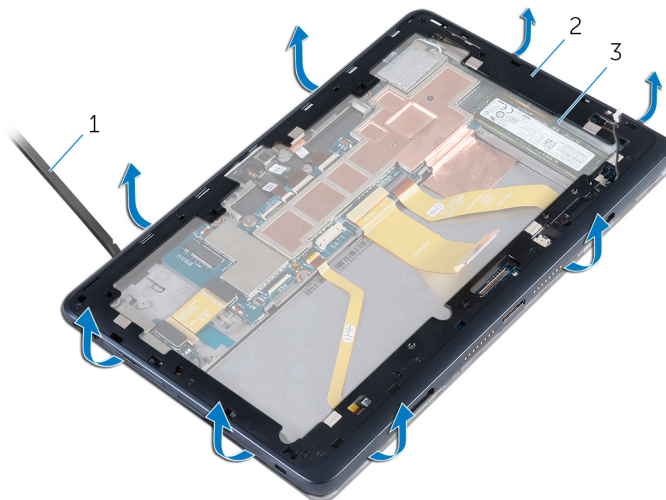
2. slot
4. docking port cable

3. Remove the screws that secure the tablet bezel to the display assembly.



- a. screws (11)
- b. tablet bezel
- c. display assembly

4. Using a plastic scribe, pry up along the edges of the tablet bezel.
5. Lift the tablet bezel away from the display assembly.



- a. plastic scribe
- b. tablet bezel
- c. display assembly

6. Remove the [docking connector board](#) from the tablet bezel.

Replacing the tablet bezel

NOTE: Before working inside your tablet, read the safety information that shipped with your tablet and follow the steps in [Before working inside your tablet](#). After working inside your tablet, follow the instructions in [After working inside your tablet](#). For more safety best practices, see the Regulatory Compliance home page at www.dell.com/regulatory_compliance.

Topics:

- [Procedure](#)
- [Post-requisites](#)

Procedure

1. Replace the [docking connector board](#).
2. Place the tablet bezel on the display assembly and snap the tablet bezel into place.
3. Replace the screws that secure the tablet bezel to the display assembly.
4. Connect the docking port cable to the docking connector board on the tablet bezel.
5. Slide the docking port ribbon cable through the slot on the tablet bezel.
6. Adhere the docking port ribbon cable on the docking connector board.

Post-requisites

Replace the [back cover](#).

Removing the docking connector board

NOTE: Before working inside your tablet, read the safety information that shipped with your tablet and follow the steps in [Before working inside your tablet](#). After working inside your tablet, follow the instructions in [After working inside your tablet](#). For more safety best practices, see the Regulatory Compliance home page at www.dell.com/regulatory_compliance.

Topics:

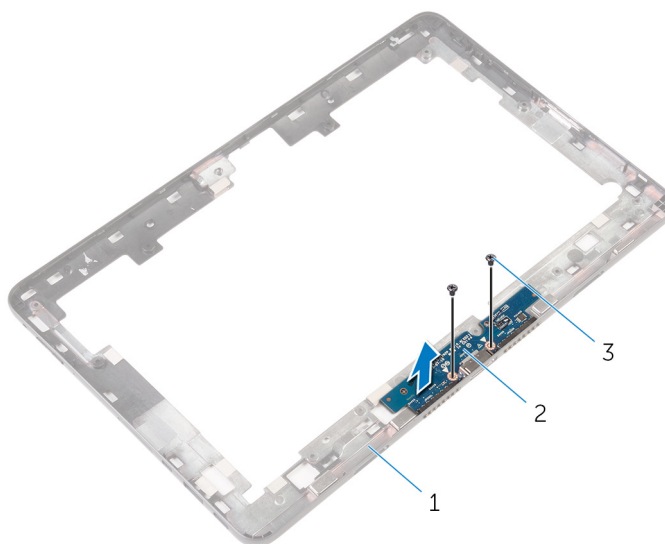
- [Prerequisites](#)
- [Procedure](#)

Prerequisites

1. Remove the [back cover](#).
2. Remove the [battery](#).
3. Remove the [tablet bezel](#).

Procedure

1. Turn the tablet bezel over.
2. Remove the screws that secure the docking connector board to the tablet bezel.
3. Lift the docking connector board off the tablet bezel.



- a. tablet bezel
- b. docking connector board
- c. screws (2)

Replacing the docking connector board

NOTE: Before working inside your tablet, read the safety information that shipped with your tablet and follow the steps in [Before working inside your tablet](#). After working inside your tablet, follow the instructions in [After working inside your tablet](#). For more safety best practices, see the Regulatory Compliance home page at www.dell.com/regulatory_compliance.

Topics:

- [Procedure](#)
- [Post-requisites](#)

Procedure

1. Place the docking connector board on the tablet bezel.
2. Align the screw holes on the docking connector board with the screw holes on the tablet bezel.
3. Replace the screws that secure the docking connector board to the tablet bezel.

Post-requisites

1. Replace the [tablet bezel](#).
2. Replace the [battery](#).
3. Replace the [back cover](#).

Removing the coin-cell battery

NOTE: Before working inside your tablet, read the safety information that shipped with your tablet and follow the steps in [Before working inside your tablet](#). After working inside your tablet, follow the instructions in [After working inside your tablet](#). For more safety best practices, see the Regulatory Compliance home page at www.dell.com/regulatory_compliance.

CAUTION: Removing the coin-cell battery resets the BIOS setup program's settings to default. It is recommended that you note the BIOS setup program's settings before removing the coin-cell battery.

Topics:

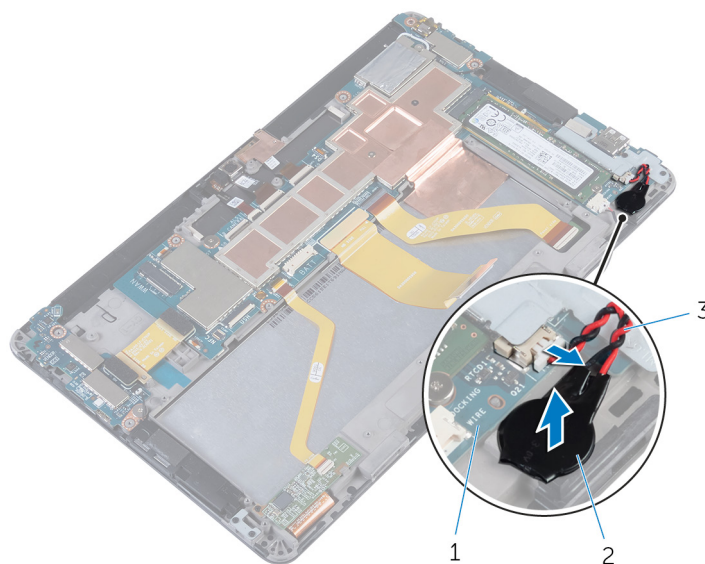
- [Prerequisites](#)
- [Procedure](#)

Prerequisites

1. Remove the [back cover](#).
2. Remove the [battery](#).
3. Remove the [tablet bezel](#).

Procedure

1. Disconnect the coin-cell battery cable from the system board.
2. Peel the coin-cell battery off the display assembly.



- a. system board
- b. coin-cell battery
- c. coin-cell battery cable

Replacing the coin-cell battery

NOTE: Before working inside your tablet, read the safety information that shipped with your tablet and follow the steps in [Before working inside your tablet](#). After working inside your tablet, follow the instructions in [After working inside your tablet](#). For more safety best practices, see the Regulatory Compliance home page at www.dell.com/regulatory_compliance.

Topics:

- [Procedure](#)
- [Post-requisites](#)

Procedure

1. Adhere the coin-cell battery to the display assembly.
2. Connect the coin-cell battery cable to the system board.

Post-requisites

1. Replace the [tablet bezel](#).
2. Replace the [battery](#).
3. Replace the [back cover](#).

Removing the speakers

NOTE: Before working inside your tablet, read the safety information that shipped with your tablet and follow the steps in [Before working inside your tablet](#). After working inside your tablet, follow the instructions in [After working inside your tablet](#). For more safety best practices, see the Regulatory Compliance home page at www.dell.com/regulatory_compliance.

Topics:

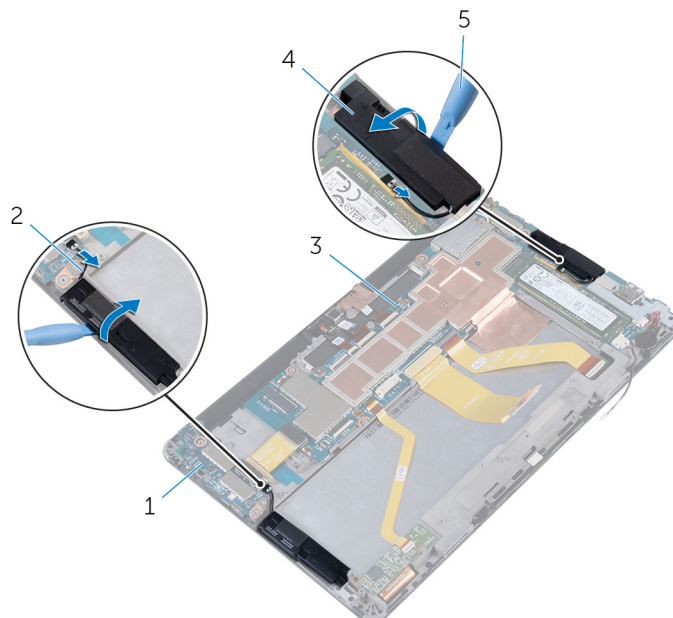
- [Prerequisites](#)
- [Procedure](#)

Prerequisites

1. Remove the [back cover](#).
2. Remove the [battery](#).
3. Remove the [tablet bezel](#).

Procedure

1. Disconnect the right speaker cable from the I/O board and the left speaker cable from the system board.
2. Using a plastic scribe, pry the speakers out of the display assembly.
3. Lift the speakers along with the cables off the display assembly.



- | | |
|-------------------|-----------------------|
| 1. I/O board | 2. speaker cables (2) |
| 3. system board | 4. speakers |
| 5. plastic scribe | |

Replacing the speakers

NOTE: Before working inside your tablet, read the safety information that shipped with your tablet and follow the steps in [Before working inside your tablet](#). After working inside your tablet, follow the instructions in [After working inside your tablet](#). For more safety best practices, see the Regulatory Compliance home page at www.dell.com/regulatory_compliance.

Topics:

- [Procedure](#)
- [Post-requisites](#)

Procedure

1. Adhere the speakers to the display assembly.
2. Connect the right speaker cable to the I/O board and the left speaker cable to the system board.

Post-requisites

1. Replace the [tablet bezel](#).
2. Replace the [battery](#).
3. Replace the [back cover](#).

Removing the I/O board

NOTE: Before working inside your tablet, read the safety information that shipped with your tablet and follow the steps in [Before working inside your tablet](#). After working inside your tablet, follow the instructions in [After working inside your tablet](#). For more safety best practices, see the Regulatory Compliance home page at www.dell.com/regulatory_compliance.

Topics:

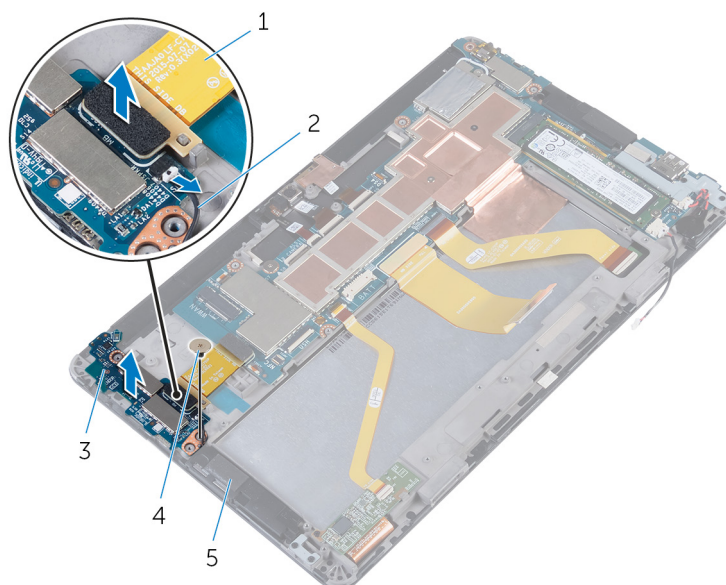
- [Prerequisites](#)
- [Procedure](#)

Prerequisites

1. Remove the [back cover](#).
2. Remove the [battery](#).
3. Remove the [tablet bezel](#).

Procedure

1. Disconnect the speaker cable from the I/O board.
2. Disconnect the I/O-board cable from the I/O board.
3. Remove the screw that secures the I/O board to the display assembly.



- | | |
|---------------------|------------------|
| 1. I/O-board cable | 2. speaker cable |
| 3. I/O board | 4. screw |
| 5. display assembly | |

Replacing the I/O board

NOTE: Before working inside your tablet, read the safety information that shipped with your tablet and follow the steps in [Before working inside your tablet](#). After working inside your tablet, follow the instructions in [After working inside your tablet](#). For more safety best practices, see the Regulatory Compliance home page at www.dell.com/regulatory_compliance.

Topics:

- [Procedure](#)
- [Post-requisites](#)

Procedure

1. Align the screw hole on the I/O board with the screw hole on the display assembly.
2. Replace the screw that secures the I/O board to the display assembly.
3. Connect the I/O-board cable to the I/O board.
4. Connect the speaker cable to the I/O board.

Post-requisites

1. Replace the [tablet bezel](#).
2. Replace the [battery](#).
3. Replace the [back cover](#).

Removing the front camera

NOTE: Before working inside your tablet, read the safety information that shipped with your tablet and follow the steps in [Before working inside your tablet](#). After working inside your tablet, follow the instructions in [After working inside your tablet](#). For more safety best practices, see the Regulatory Compliance home page at www.dell.com/regulatory_compliance.

Topics:

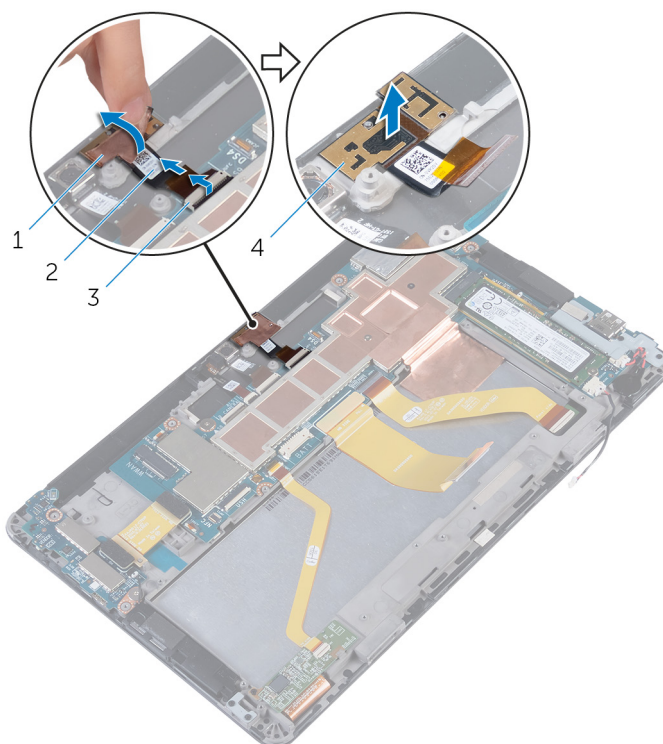
- [Prerequisites](#)
- [Procedure](#)

Prerequisites

1. Remove the [back cover](#).
2. Remove the [battery](#).
3. Remove the [tablet bezel](#).

Procedure

1. Open the latch and disconnect the camera cable from the system board.
2. Peel off the tape that secures the front camera to the display assembly.
3. Lift the front camera, along with its cable, off the display assembly.



1. tape
3. latch

2. camera cable
4. front camera

Replacing the front camera

NOTE: Before working inside your tablet, read the safety information that shipped with your tablet and follow the steps in [Before working inside your tablet](#). After working inside your tablet, follow the instructions in [After working inside your tablet](#). For more safety best practices, see the Regulatory Compliance home page at www.dell.com/regulatory_compliance.

Topics:

- [Procedure](#)
- [Post-requisites](#)

Procedure

1. Align and place the front camera on the display assembly.
2. Slide the camera cable into the connector on the system board and close the latch.
3. Adhere the tape that secures the front camera to the display assembly.

Post-requisites

1. Replace the [tablet bezel](#).
2. Replace the [battery](#).
3. Replace the [back cover](#).

Removing the back camera

NOTE: Before working inside your tablet, read the safety information that shipped with your tablet and follow the steps in [Before working inside your tablet](#). After working inside your tablet, follow the instructions in [After working inside your tablet](#). For more safety best practices, see the Regulatory Compliance home page at www.dell.com/regulatory_compliance.

Topics:

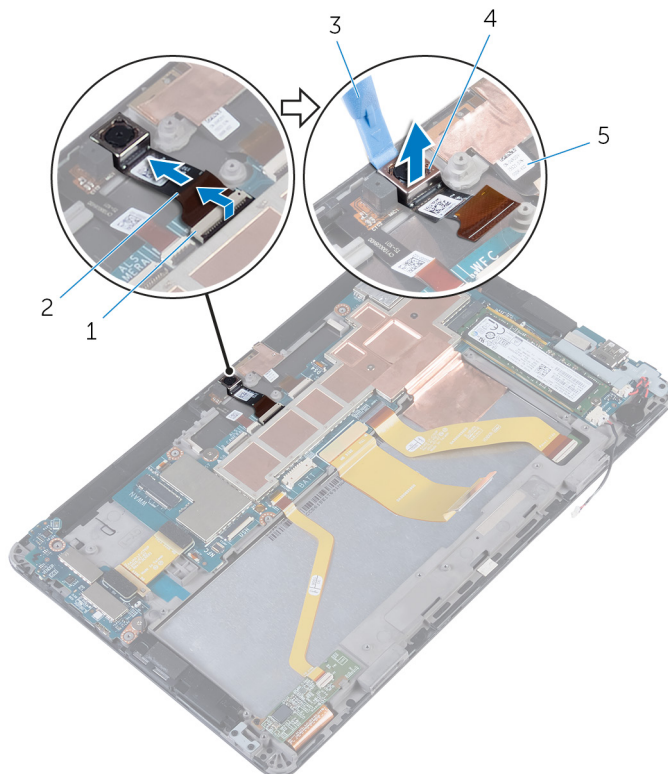
- [Prerequisites](#)
- [Procedure](#)

Prerequisites

1. Remove the [back cover](#).
2. Remove the [battery](#).
3. Remove the [tablet bezel](#).

Procedure

1. Open the latch and disconnect the camera cable from the system board.
2. Using a plastic scribe, lift the back camera along with its cable off the display assembly.



- | | |
|-------------------|-----------------|
| 1. latch | 2. camera cable |
| 3. plastic scribe | 4. camera |

5. display assembly

Replacing the back camera

NOTE: Before working inside your tablet, read the safety information that shipped with your tablet and follow the steps in [Before working inside your tablet](#). After working inside your tablet, follow the instructions in [After working inside your tablet](#). For more safety best practices, see the Regulatory Compliance home page at www.dell.com/regulatory_compliance.

Topics:

- [Procedure](#)
- [Post-requisites](#)

Procedure

1. Align and place the back camera on the display assembly.
2. Slide the camera cable into the connector on the system board and close the latch to secure the cable.

Post-requisites

1. Replace the [tablet bezel](#).
2. Replace the [battery](#).
3. Replace the [back cover](#).

Removing the system board

- NOTE:** Before working inside your tablet, read the safety information that shipped with your tablet and follow the steps in [Before working inside your tablet](#). After working inside your tablet, follow the instructions in [After working inside your tablet](#). For more safety best practices, see the Regulatory Compliance home page at www.dell.com/regulatory_compliance.
- NOTE:** Your tablet's Service Tag is stored in the system board. You must enter the Service Tag in the BIOS setup program after you replace the system board.
- NOTE:** Replacing the system board removes any changes you have made to the BIOS using the BIOS setup program. You must make the desired changes again after you replace the system board.
- NOTE:** Before disconnecting the cables from the system board, note the location of the connectors so that you can reconnect the cables correctly after you replace the system board.

Topics:

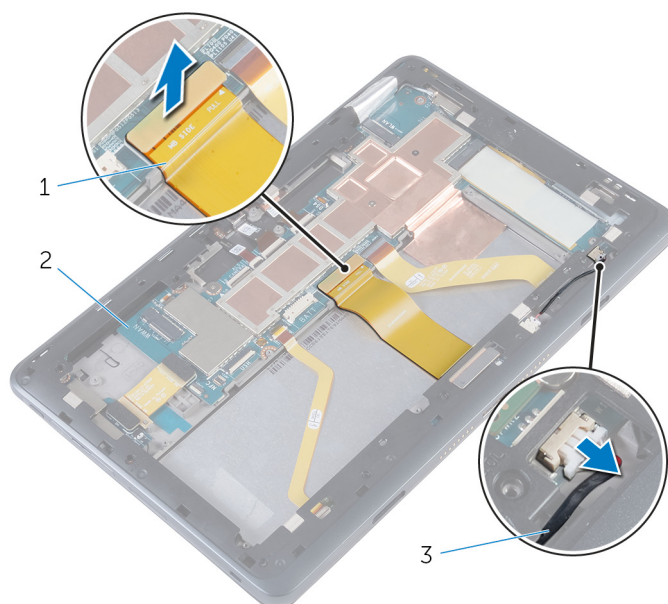
- [Prerequisites](#)
- [Procedure](#)

Prerequisites

1. Remove the [back cover](#).
2. Remove the [battery](#).
3. Remove the [solid-state drive](#).
4. Remove the [wireless card](#).

Procedure

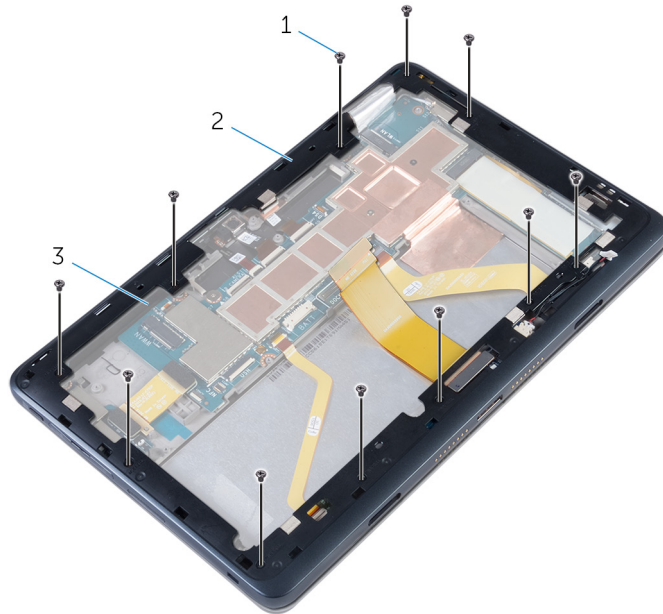
1. Disconnect the docking port ribbon cable and docking port cable from the system board.



- a. docking port ribbon cable

- b. system board
- c. docking port cable

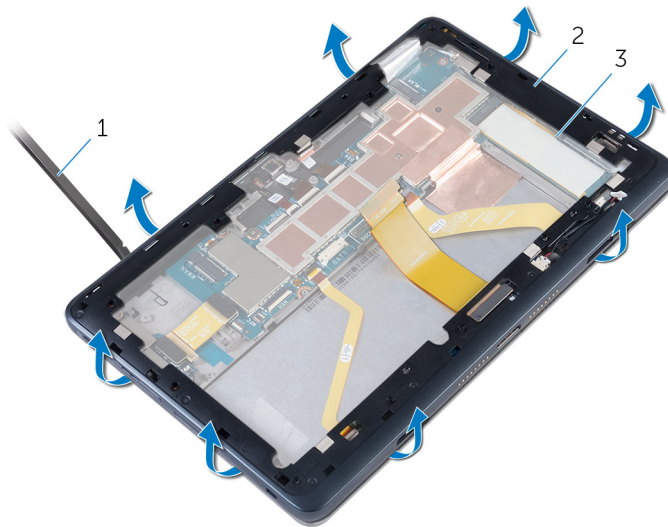
2. Remove the screws that secure the tablet bezel to the display assembly.



- a. screws (11)
- b. tablet bezel
- c. display assembly

3. Using a plastic scribe, pry up along the edges of the tablet bezel.

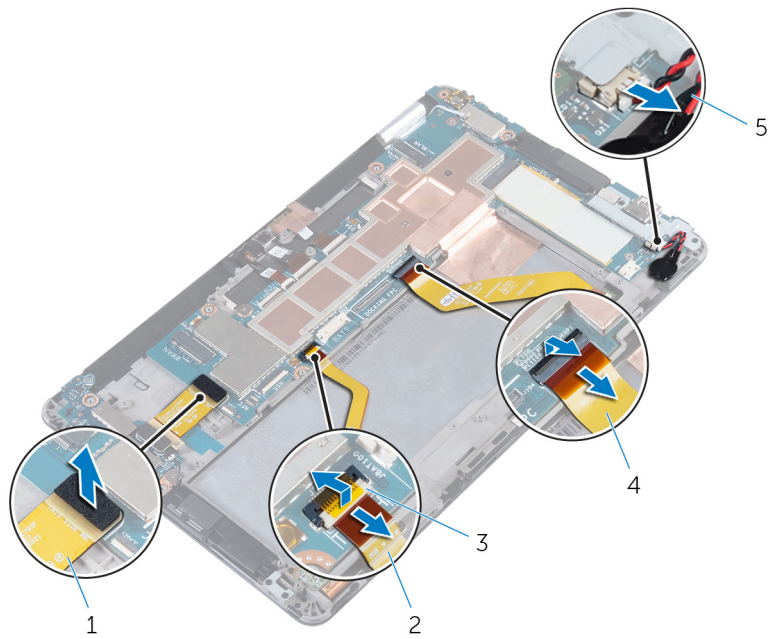
4. Lift the tablet-bezel assembly off the display assembly.



- a. plastic scribe
- b. tablet bezel
- c. display assembly

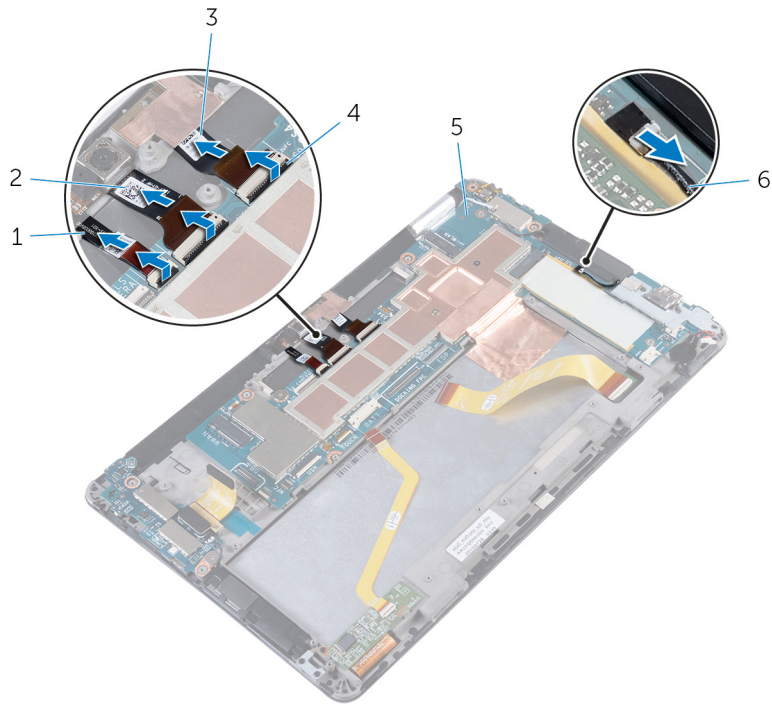
5. Open the latches and disconnect the touch-screen board cable and display cable from the system board.

6. Disconnect the I/O-board cable and coin-cell battery cable from the system board.



- 1. I/O-board cable
- 2. touch-screen board cable
- 3. latches (2)
- 4. display cable
- 5. coin-cell battery cable

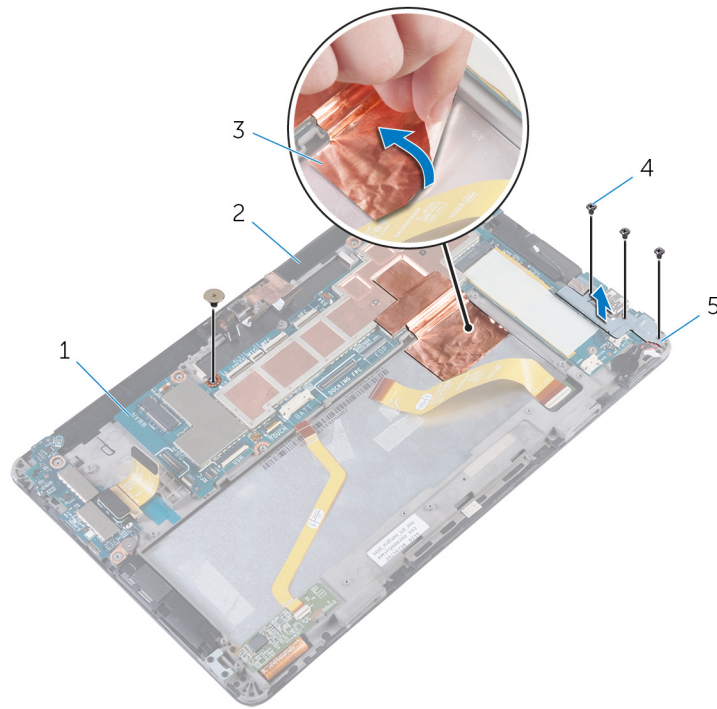
- 7. Disconnect the speaker cable from the system board.
- 8. Open the latches and disconnect the microphone cable, front-camera cable, and rear-camera cable from the system board.



- 1. microphone cable
- 2. front-camera cable
- 3. rear-camera cable
- 4. latches (3)
- 5. system board
- 6. speaker cable

- 9. Remove the screws that secure the system board to the display assembly.
- 10. Peel off the foil that secures the system board to the display assembly.

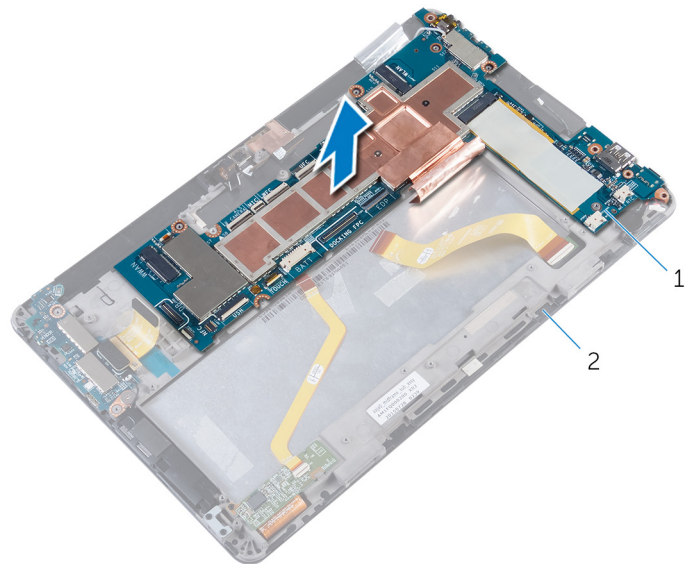
11. Lift the I/O bracket.



- 1. system board
- 3. foil
- 5. I/O bracket

- 2. display assembly
- 4. screws (4)

12. Lift the system board off the display assembly.



- a. system board
- b. display assembly

Replacing the system board

- NOTE:** Before working inside your tablet, read the safety information that shipped with your tablet and follow the steps in [Before working inside your tablet](#). After working inside your tablet, follow the instructions in [After working inside your tablet](#). For more safety best practices, see the Regulatory Compliance home page at www.dell.com/regulatory_compliance.
- NOTE:** Your tablet's Service Tag is stored in the system board. You must enter the Service Tag in the BIOS setup program after you replace the system board.
- NOTE:** Replacing the system board removes any changes you have made to the BIOS using the BIOS setup program. You must make the desired changes again after you replace the system board.

Topics:

- [Procedure](#)
- [Post-requisites](#)

Procedure

1. Align the screw holes on the system board with the screw holes on the display assembly.
2. Replace the screws that secure the system board to the display assembly.
3. Place the I/O bracket on the system board.
4. Adhere the foil that secures the system board to the display assembly.
5. Slide the microphone cable, front-camera cable, and rear-camera cable into the connectors on the system board and close the latches.
6. Connect the speaker cable, I/O-board cable, and coin-cell battery cable to the system board.
7. Slide the touch-screen board cable and display cable into the connectors on the system board and close the latches.
8. Place the tablet bezel on the display assembly and snap the tablet bezel into place.
9. Replace the screws that secure the tablet bezel to the display assembly.
10. Connect the docking port ribbon cable and docking port cable to the system board.

Post-requisites

1. Replace the [wireless card](#).
2. Replace the [solid-state drive](#).
3. Replace the [battery](#).
4. Replace the [back cover](#).

Removing the display assembly

NOTE: Before working inside your tablet, read the safety information that shipped with your tablet and follow the steps in [Before working inside your tablet](#). After working inside your tablet, follow the instructions in [After working inside your tablet](#). For more safety best practices, see the Regulatory Compliance home page at www.dell.com/regulatory_compliance.

Topics:

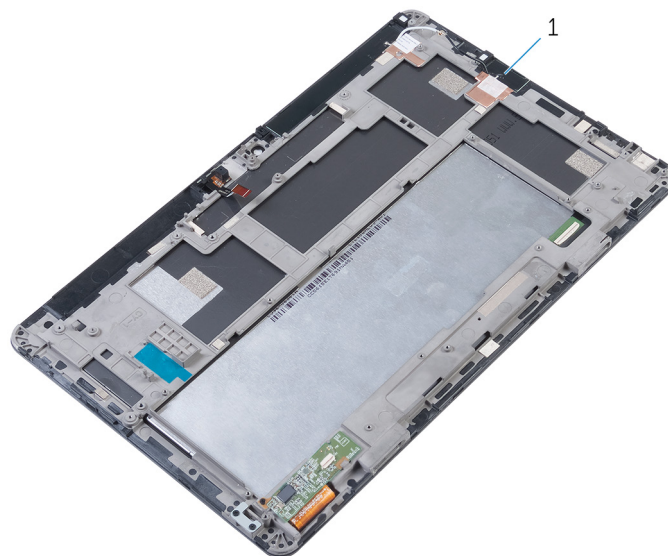
- [Prerequisites](#)
- [Procedure](#)

Prerequisites

1. Remove the [back cover](#).
2. Remove the [battery](#).
3. Remove the [solid-state drive](#).
4. Remove the [wireless card](#).
5. Remove the [tablet bezel](#).
6. Remove the [docking connector board](#).
7. Remove the [coin-cell battery](#).
8. Remove the [speakers](#).
9. Remove the [I/O board](#).
10. Remove the [front camera](#).
11. Remove the [back camera](#).
12. Remove the [system board](#).

Procedure

After performing all the prerequisites, we are left with the display assembly.



1. display assembly

Replacing the display assembly

NOTE: Before working inside your tablet, read the safety information that shipped with your tablet and follow the steps in [Before working inside your tablet](#). After working inside your tablet, follow the instructions in [After working inside your tablet](#). For more safety best practices, see the Regulatory Compliance home page at www.dell.com/regulatory_compliance.

Topics:

- [Procedure](#)
- [Post-requisites](#)

Procedure

Place the display assembly on a clean surface.


Post-requisites

1. Replace the [system board](#).
2. Replace the [back camera](#).
3. Replace the [front camera](#).
4. Replace the [I/O board](#).
5. Replace the [speakers](#).
6. Replace the [coin-cell battery](#).
7. Replace the [docking connector board](#).
8. Replace the [tablet bezel](#).
9. Replace the [wireless card](#).
10. Replace the [solid-state drive](#).
11. Replace the [battery](#).
12. Replace the [back cover](#).

Flashing the BIOS

You may need to flash (update) the BIOS when an update is available or when you replace the system board. To flash the BIOS:

1. Turn on the tablet.
2. Go to **www.dell.com/support**.
3. Tap **Product Support**, enter the Service Tag of your tablet and tap **Submit**.

 **NOTE:** If you do not have the Service Tag, use the auto-detect feature or manually browse for your tablet model.

4. Tap **Drivers and downloads**.
5. Select the operating system installed on your tablet.
6. Scroll down the page and expand **BIOS**.
7. Tap **Download File** to download the latest version of the BIOS for your tablet.
8. Save the file and, once the download is complete, navigate to the folder where you saved the BIOS update file.
9. Double-tap the BIOS update file icon and follow the instructions on the screen.

Topics:

- [Clearing CMOS](#)

Clearing CMOS

If the power adapter is connected, press and hold the power button for 25 seconds. The tablet turns on automatically after 90 seconds.

If the power adapter is not connected:

1. Press and hold the power button for 25 seconds.
2. Then, press the power button for 2–3 seconds.

The tablet turns on automatically after 90 seconds.


Technology and components


Topics:

- Power adapter
- Processors
- Chipsets
- Graphic options
- Realtek ALC3266–CG Waves MaxxAudio Pro controller
- WLAN cards
- Hard drive options
- Camera features
- Memory features
- Intel chipset drivers
- Intel HD Graphics drivers
- Realtek HD audio drivers
- Realtek RTS5242-GR Card Reader drivers
- Realtek LAN network drivers
- Intel Wireless 3165 WiFi and Bluetooth drivers

Power adapter

This tablet is offered with the 30 W power adapter.


 **WARNING:** When you disconnect the power adapter cable from the tablet, grasp the connector, not the cable itself, and then pull firmly but gently to avoid damaging the cable.

 **WARNING:** The power adapter works with electrical outlets worldwide. However, power connectors and power strips vary among countries. Using an incompatible cable or improperly connecting the cable to the power strip or electrical outlet may cause fire or equipment damage.

Processors

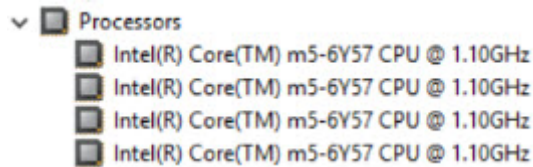
This tablet is shipped with the following processors:

- Intel Core M3-6Y30
- Intel Core M5-6Y57

 **NOTE:** The clock speed and performance varies depending on the workload and other variables.

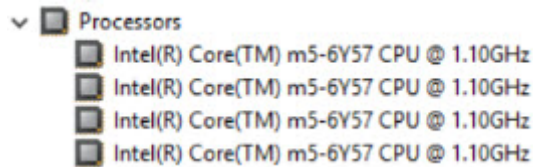
Identifying processors in Windows 10

1. Tap **Search the Web and Windows**.
2. Type **Device Manager**.
3. Tap **Processor**.
The basic information of the processor is displayed.



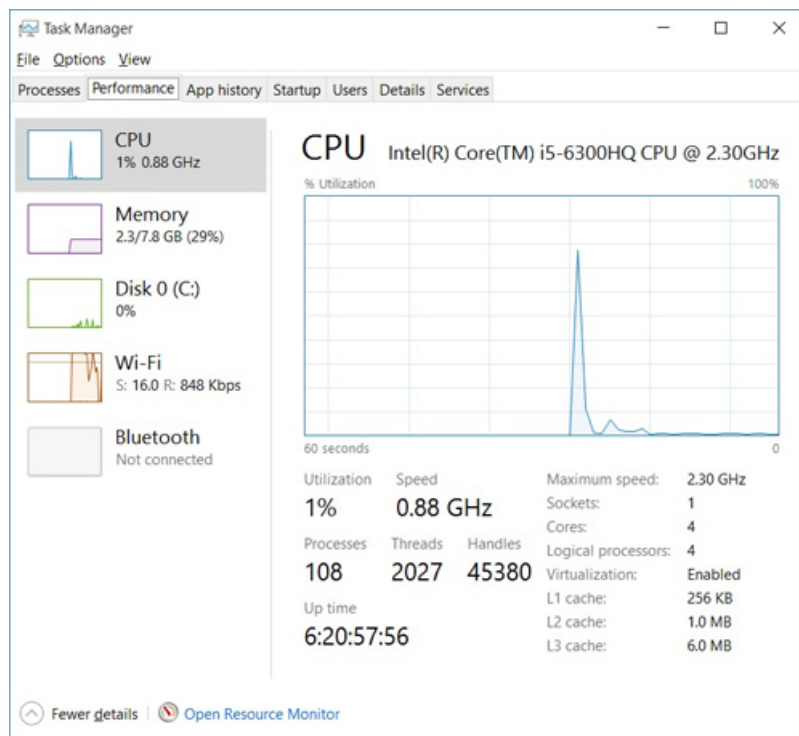
Identifying processors in Windows 8

1. Tap **Search the Web and Windows**.
2. Type **Device Manager**.
3. Tap **Processor**.
The basic information of the processor is displayed.



Verifying the processor usage in Task Manager

1. Press and hold the taskbar.
2. Select **Start Task Manager**.
The **Windows Task Manager** window is displayed.
3. Tap the **Performance** tab in the **Windows Task Manager** window.
The processor performance details are displayed.

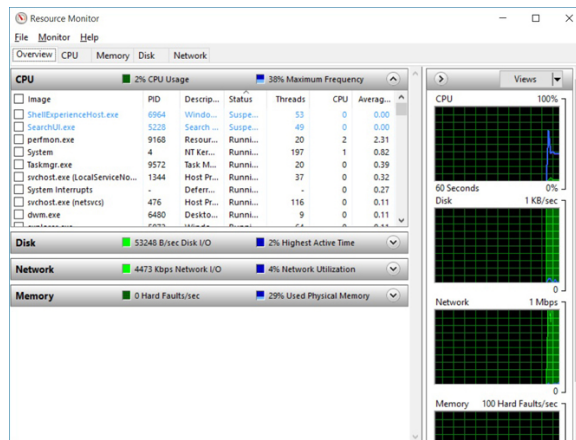


Verifying the processor usage in Resource Monitor

1. Press and hold the taskbar.
2. Select **Start Task Manager**.

The **Windows Task Manager** window is displayed.

3. Tap the **Performance** tab in the **Windows Task Manager** window.
The processor performance details are displayed.
4. Tap **Open Resource Monitor**.



Chipsets

All tablets communicate with the CPU through the chipset. This tablet is shipped with Intel 100 Series chipset.


Downloading the chipset driver

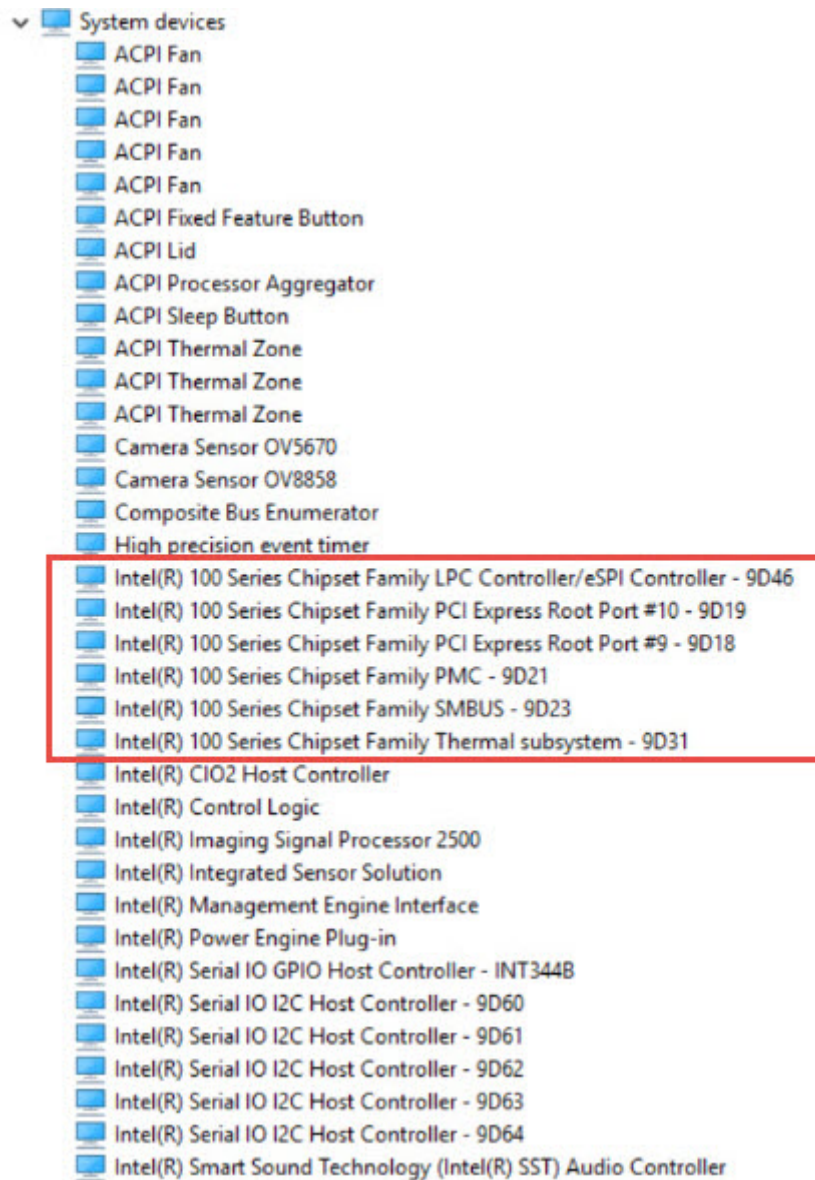
1. Turn on the tablet.
2. Go to **www.dell.com/support**.
3. Tap **Product Support**, enter the Service Tag of your tablet, and then tap **Submit**.

NOTE: If you do not have the Service Tag, use the autodetect feature or manually browse for your tablet model.


4. Tap **Drivers and Downloads**.
5. Select the operating system installed on your tablet.
6. Scroll down the page, expand **Chipset**, and select your chipset driver.
7. Tap **Download File** to download the latest version of the chipset driver for your tablet.
8. After the download is complete, navigate to the folder where you saved the driver file.
9. Double-tap the chipset driver file icon and follow the instructions on the screen.

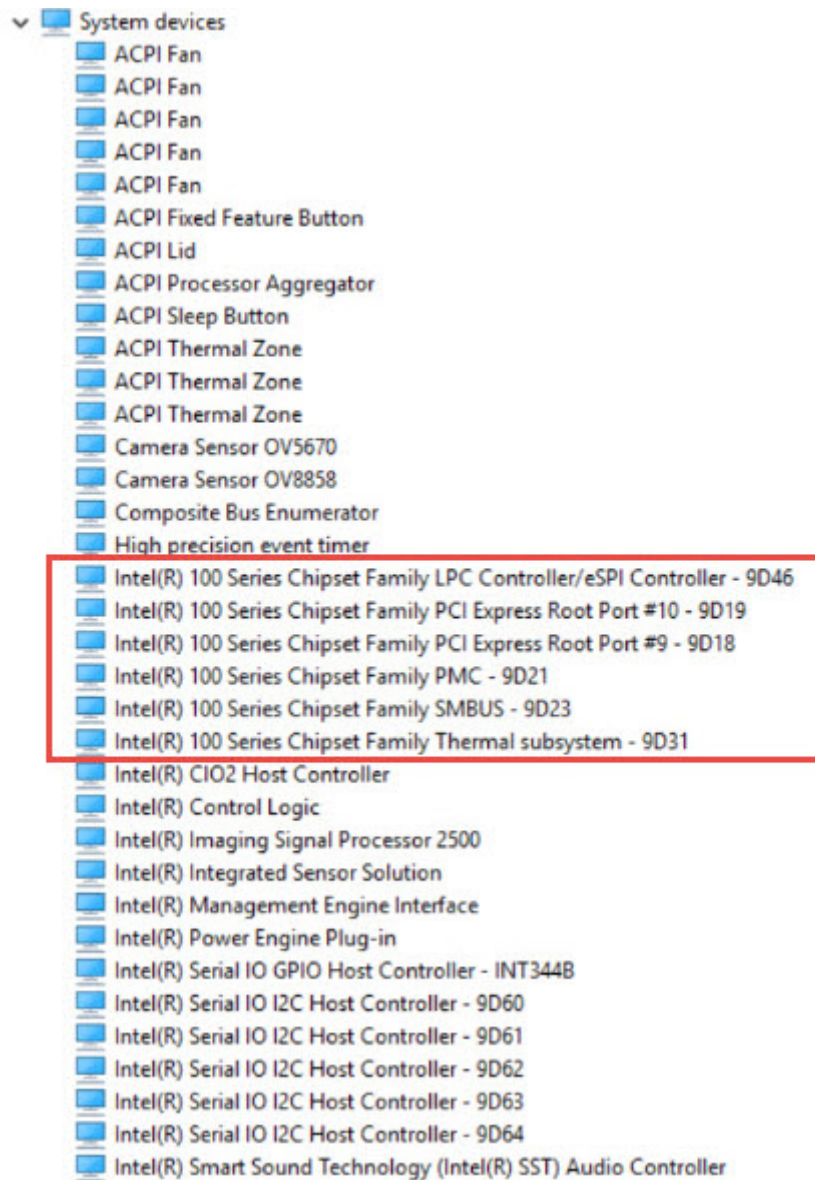
Identifying the chipset in Device Manager on Windows 10

1. Tap **All Settings**  on the Windows 10 Charms Bar.
2. From the **Control Panel**, select **Device Manager**.
3. Expand **System Devices** and search for the chipset.



Identifying chipset in Device Manager on Windows 8

1. Tap **Settings**  on the Windows 8.1 Charms Bar.
2. From the **Control Panel**, select **Device Manager**.
3. Expand **System Devices** and search for the chipset.



Graphic options

This tablet consists of the Intel HD Graphics 515 graphics chipset.

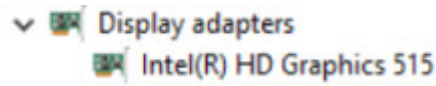
Downloading Driver

1. Turn on the tablet.
2. Go to **www.dell.com/support**.
3. Tap **Product Support**, enter the Service Tag of your tablet, and then tap **Submit**.
i **NOTE:** If you do not have the Service Tag, use the auto detect feature or manually browse for your tablet model.
4. Tap **Drivers and Downloads**.
5. Select the operating system installed on your tablet.
6. Scroll down the page and select the graphic driver to install.
7. Tap **Download File** to download the graphic driver for your tablet.
8. After the download is complete, navigate to the folder where you saved the graphic driver file.

9. Double-tap the graphic driver file icon and follow the instructions on the screen.

Identifying the display adapter

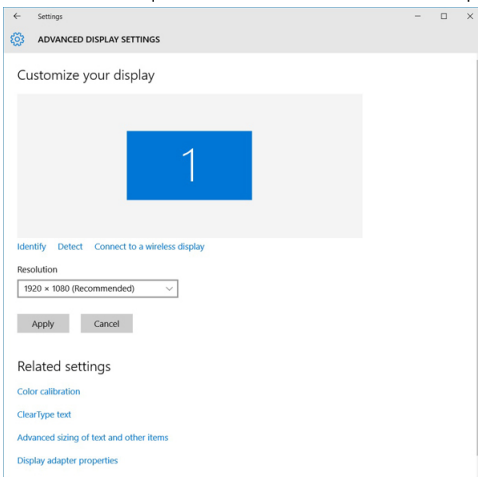
1. Start the **Search Charm** and select **Settings**.
2. Type **Device Manager** in the search box and tap **Device Manager** from the left pane.
3. Expand **Display adapters**.



The display adapters are displayed.

Changing the screen resolution

1. Press and hold the desktop screen and select **Display Settings**.
2. Tap or click **Advanced display settings**.
3. Select the required resolution from the drop-down list and tap **Apply**.



Rotating the display

1. Right click on the desktop.
A sub menu is displayed.
2. Select **Graphic Options > Rotation** and choose one of the following:
 - Rotate to Normal
 - Rotate to 90 Degrees
 - Rotate to 180 Degrees
 - Rotate to 270 Degrees


- NOTE:** The Display can also be rotated using the following key combinations:
- Ctrl + Alt + Up arrow key (Rotate to normal)
 - Right arrow key (Rotate 90 degrees)
 - Down arrow key (Rotate 180 degrees)
 - Left arrow key (Rotate 270 degrees)

Display options

This tablet has 10.8-inch FHD with 1920 x 1080 resolution (maximum).

Adjusting brightness in Windows 10


To enable or disable automatic screen brightness adjustment:

1. Swipe-in from the right edge of the display to access the Action Center.
2. Tap or click **All Settings**  > **System** > **Display**.
3. Use the **Adjust my screen brightness automatically** slider to enable or disable automatic-brightness adjustment.




 **NOTE:** You can also use the **Brightness level** slider to adjust the brightness manually.

Adjusting brightness in Windows 8

To enable or disable automatic screen brightness adjustment:

1. Swipe-in from the right edge of the display to access the Charms menu.
2. Tap or click **Settings**  → **Change PC Settings** → **PC and devices** → **Power and sleep**.
3. Use the **Adjust my screen brightness automatically** slider to enable or disable automatic-brightness adjustment.

Cleaning the display

1. Check for any smudges or areas that must be cleaned.
2. Use a microfiber cloth to remove any obvious dust and gently brush off any dust particles.
3. Proper cleaning kits should be used to clean and keep your display in a crisp clear pristine condition.
 **NOTE:** Never spray any cleaning solutions directly on the screen; spray it to the cleaning cloth.
4. Gently wipe the screen in a circular motion. Do not press hard on the cloth.
 **NOTE:** Do not press hard or touch the screen with your fingers or you may leave oily prints and smears.
 **NOTE:** Do not leave any liquid on the screen.
5. Remove all excess moisture as it may damage your screen.
6. Let the display dry thoroughly before you turn it on.
7. For stains that are hard to remove, repeat this procedure till the display is clean.


Using touch screen in Windows 10

Follow these steps to enable or disable the touch screen:

1. Right click on the Start menu.
2. Select **Control Panel**.
3. Tap **Pen and Input Devices** in the **Control Panel**.
4. Tap the **Touch** tab.
5. Select **Use your finger as an input device** to enable the touch screen. Clear the box to disable the touch screen.

Using touch screen in Windows 8


Follow these steps to enable or disable the touch screen:

1. Go to the Charms Bar and tap **Settings** .
2. Tap **Control Panel**.
3. Tap **Pen and Input Devices** in the **Control Panel**.
4. Tap the **Touch** tab.
5. Select **Use your finger as an input device** to enable the touch screen. Clear the box to disable the touch screen.

Connecting to external display devices

Follow these steps to connect your tablet to an external display device:

1. Ensure that the projector is turned on and plug the projector cable into a video port on your tablet.
2. Press the Windows logo+P key.
3. Select one of the following modes:
 - PC screen only
 - Duplicate
 - Extend
 - Second Screen only


 **NOTE:** For more information, see the document that shipped with your display device.

Realtek ALC3266–CG Waves MaxxAudio Pro controller

This tablet ships with integrated Realtek ALC3266–CG Waves MaxxAudio Pro controller. It is a High Definition audio codec designed for Windows desktop and mobile tablets.

Downloading the audio driver

1. Turn on the tablet.
2. Go to **www.dell.com/support**.
3. Tap **Product Support**, enter the Service Tag of your tablet and tap **Submit**.

 **NOTE:** If you do not have the Service Tag, use the autodetect feature or manually browse for your tablet model.

4. Tap **Drivers and Downloads**.
5. Select the operating system installed on your tablet.
6. Scroll down the page and expand **Audio**.
7. Select the audio driver.
8. Tap **Download File** to download the latest version of the audio driver for your tablet.
9. After the download is complete, navigate to the folder where you saved the audio driver file.
10. Double-tap the audio driver file icon and follow the instructions on the screen.

Identifying the audio controller in Windows 10



1. Start the **Search Charm** and select **All Settings** .
2. Type **Device Manager** in the search box and select **Device Manager** from the left pane.
3. Expand **Sound, video and game controllers**.
The audio controller is displayed.

Table 1. Identifying the audio controller in Windows 10

Before installation	After installation
 <p>Sound, video and game controllers High Definition Audio Device High Definition Audio Device</p>	 <p>Sound, video and game controllers Intel(R) AVStream Camera 2500 Intel(R) Display Audio Realtek High Definition Audio(SST)</p>

Identifying the audio controller in Windows 8


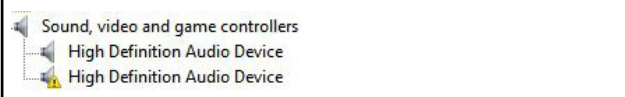

1. Start the **Search Charm** and select **Settings** .
2. Type **Device Manager** in the search box and select **Device Manager** from the left pane.
3. Expand **Sound, video and game controllers**.
The audio controller is displayed.

Table 2. Identifying the audio controller in Windows 8

Before installation	After installation
	



Changing the audio settings

1. Start the **Search Charm** and type **Dell Audio** in the search box.
2. Start the Dell Audio utility from the left pane.

WLAN cards

This tablet supports the Intel Dual Band Wireless AC 8260 WLAN card.

Downloading the WLAN driver

1. Turn on the tablet.
2. Go to **www.dell.com/support**.
3. Tap **Product Support**, enter the Service Tag of your tablet, and then tap **Submit**.
 **NOTE:** If you do not have the Service Tag, use the autodetect feature or manually browse for your tablet model.
4. Tap **Drivers and Downloads**.
5. Select the operating system installed on your tablet.
6. Scroll down the page, expand **Network**, and select the **WLAN** driver.
 **NOTE:** The WLAN driver varies depending on the WLAN card in the tablet.
7. After the download is complete, navigate to the folder where you saved the driver file.
8. Double-tap the **WLAN driver file** icon and follow the instructions on the screen.

Hard drive options

This tablet has the following mSATA solid-state drive options:

- 128 GB solid-state drive
- 256 GB solid-state drive
- 512 GB solid-state drive
- 256 GB self-encrypting drive

Identifying the hard drive in Windows 10

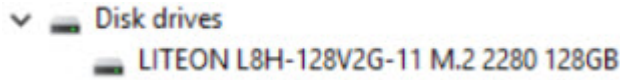
1. Right click on Start menu
2. Select **Device Manager**, and expand **Disk drives**.



The hard drive is listed under **Disk drives**.

Identifying the hard drive in Windows 8

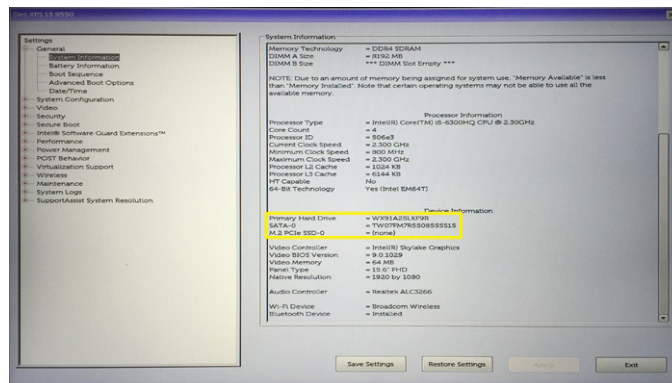
1. Tap or click **Settings**  on the Windows 8 Charms Bar.
2. Tap or click **Control Panel**, select **Device Manager**, and expand **Disk drives**.



The hard drive is listed under Disk drives.


Entering BIOS setup

1. Turn on or restart your tablet.
 2. When the Dell logo appears, perform one of the following actions to enter the BIOS setup program:
 - With keyboard — Tap F2 until the Entering BIOS setup message appears. To enter the Boot selection menu, tap F12.
 - Without keyboard — When the **F12 boot selection** menu is displayed, press the Volume Down button to enter BIOS setup. To enter the Boot selection menu, press the Volume Up button.
- Hard drive is listed under the **System Information** under the **General** group.



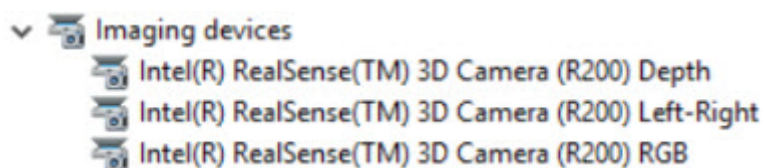
Camera features

This tablet comes with 5 MP fixed focus front-facing camera and 8 MP auto focus rear-facing camera with the image resolution of 1920 x 1080 (maximum).

 **NOTE:** On Windows 8.1 and Windows 10 tablets, Dell Webcam Central Software will not be available. Use the built-in Camera App.

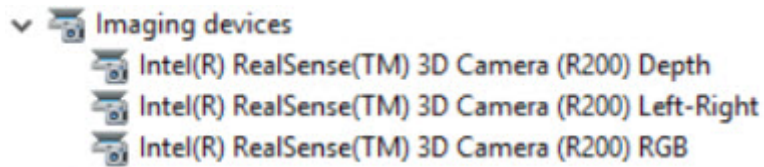
Identifying the camera in Device Manager on Windows 10

1. In the **Search** box, type **device manager**, and tap to start it.
2. Under **Device Manager**, expand **Imaging devices**.



Identifying the camera in Device Manager on Windows 8

1. Start the Charms Bar from the desktop interface.
2. Select **Control Panel**.
3. Select **Device Manager** and expand **Imaging devices**.

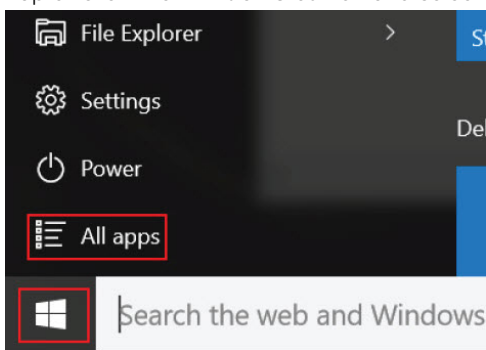


Starting the camera

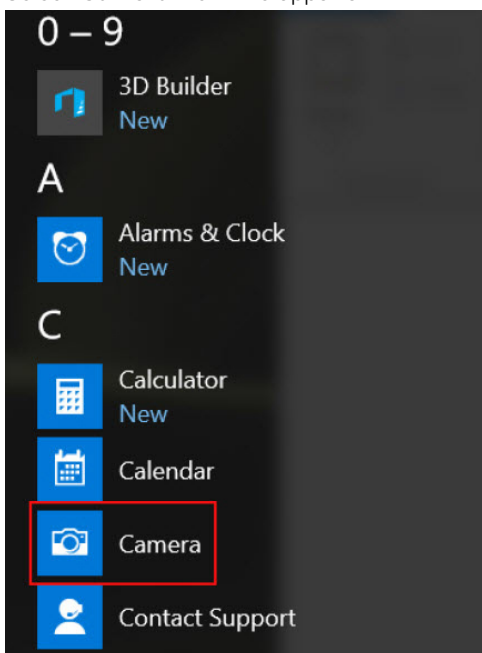
To start the camera, open an application that uses the camera. For instance, if you tap the Dell webcam central software or the Skype software that is shipped with the tablet, the camera turns on. Similarly, if you are chatting on the internet and the application requests to access the webcam, the webcam turns on.

Starting the camera application

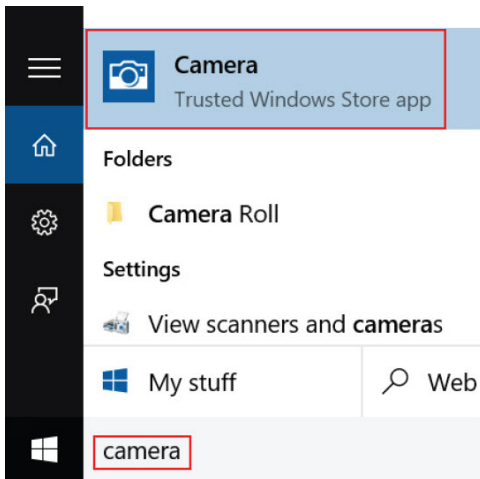
1. Tap or click the **Windows** button and select **All apps**.



2. Select **Camera** from the apps list.



3. If the **Camera** App is not available in the apps list, search for it.




Memory features

In this tablet, the memory (RAM) is a part of the system board. This tablet supports 4 GB and 8 GB LPDDR3 memory, up to 1600 MHz.

NOTE: Since memory is part of the system board, it cannot be upgraded as a separate module. If the technical support determines that the memory is the cause of an issue, replace the system board.

Verifying system memory in Windows 10

1. Click on the start menu and select **Settings**  > **System**.
2. Under **System**, tap **About**.

Verifying system memory in Windows 8

1. From your desktop, start the **Charms Bar**.
2. Select **Control Panel** and then select **System**.

Verifying system memory in setup

1. Turn on or restart your tablet.
2. Perform one of the following actions after the Dell logo is displayed:
 - With keyboard — Tap F2 until the Entering BIOS setup message appears. To enter the Boot selection menu, tap F12.
 - Without keyboard — When the **F12 boot selection** menu is displayed, press the Volume Down button to enter BIOS setup. To enter the Boot selection menu, press the Volume Up button.
3. On the left pane, select **Settings** > **General** > **System Information**.
The memory information is displayed on the right pane.

Testing memory using ePSA

1. Turn on or restart your tablet.
2. Perform one of the following actions after the Dell logo is displayed:
 - With keyboard — Press F2.
 - Without keyboard — Press and hold the **Volume Up** button when the Dell logo is displayed on the screen. When the F12 boot selection menu is displayed, select **Diagnostics** from the boot menu, and press Enter.The PreBoot System Assessment (PSA) starts on your tablet.

NOTE: If you wait too long and the operating system logo appears, continue to wait until you see the desktop. Turn off the tablet and try again.

Intel chipset drivers

Verify if the Intel chipset drivers are already installed in the tablet.

Before installation	After installation
<ul style="list-style-type: none"> Other devices <ul style="list-style-type: none"> PCI Data Acquisition and Signal Processing Controller PCI Device PCI Memory Controller PCI Simple Communications Controller SM Bus Controller Unknown device System devices <ul style="list-style-type: none"> ACPI Fan ACPI Fan ACPI Fan ACPI Fan ACPI Fan ACPI Fixed Feature Button ACPI Power Button ACPI Processor Aggregator ACPI Thermal Zone ACPI Thermal Zone ACPI Thermal Zone Composite Bus Enumerator High Definition Audio Controller High precision event timer Intel(R) Power Engine Plug-in Legacy device Microsoft ACPI-Compliant Embedded Controller Microsoft ACPI-Compliant System Microsoft System Management BIOS Driver Microsoft UEFI-Compliant System Microsoft Virtual Drive Enumerator Microsoft Windows Management Interface for ACPI Microsoft Windows Management Interface for ACPI NDIS Virtual Network Adapter Enumerator Numeric data processor PCI Express Root Complex PCI Express Root Port PCI Express Root Port PCI Express Root Port PCI standard host CPU bridge PCI standard ISA bridge Plug and Play Software Device Enumerator Programmable interrupt controller Remote Desktop Device Redirector Bus System CMOS/real time clock System timer UMBus Root Bus Enumerator 	<ul style="list-style-type: none"> Other devices <ul style="list-style-type: none"> PCI Device PCI Simple Communications Controller Unknown device System devices <ul style="list-style-type: none"> ACPI Fan ACPI Fan ACPI Fan ACPI Fan ACPI Fixed Feature Button ACPI Lid ACPI Processor Aggregator ACPI Sleep Button ACPI Thermal Zone ACPI Thermal Zone ACPI Thermal Zone Camera Sensor OV5670 Camera Sensor OV8808 Composite Bus Enumerator High precision event timer Intel(R) 100 Series Chipset Family LPC Controller/iSPI Controller - 9D46 Intel(R) 100 Series Chipset Family PCI Express Root Port #10 - 9D19 Intel(R) 100 Series Chipset Family PCI Express Root Port #9 - 9D18 Intel(R) 100 Series Chipset Family PMC - 9D21 Intel(R) 100 Series Chipset Family SMBUS - 9D23 Intel(R) 100 Series Chipset Family Thermal subsystem - 9D31 Intel(R) CIO2 Host Controller Intel(R) Control Logic Intel(R) Imaging Signal Processor 2500 Intel(R) Integrated Sensor Solution Intel(R) Management Engine Interface Intel(R) Power Engine Plug-in Intel(R) Serial IO GPIO Host Controller - INT3448 Intel(R) Serial IO I2C Host Controller - 9D60 Intel(R) Serial IO I2C Host Controller - 9D61 Intel(R) Serial IO I2C Host Controller - 9D62 Intel(R) Serial IO I2C Host Controller - 9D63

Intel HD Graphics drivers

Verify if the Intel HD Graphics drivers are already installed in the tablet.

Before installation	After installation
<ul style="list-style-type: none"> Display adapters <ul style="list-style-type: none"> Microsoft Basic Display Adapter Sound, video and game controllers <ul style="list-style-type: none"> High Definition Audio Device High Definition Audio Device 	<ul style="list-style-type: none"> Display adapters <ul style="list-style-type: none"> Intel(R) HD Graphics 515 Sound, video and game controllers <ul style="list-style-type: none"> Intel(R) AVStream Camera 2500 Intel(R) Display Audio Realtek High Definition Audio(SST)

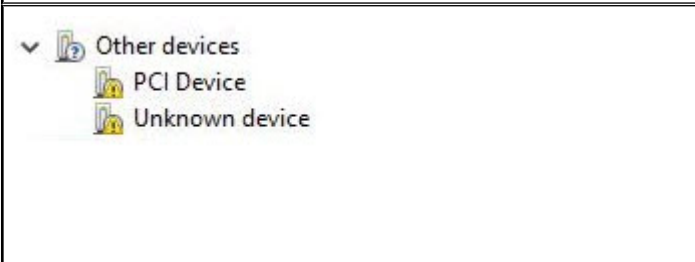
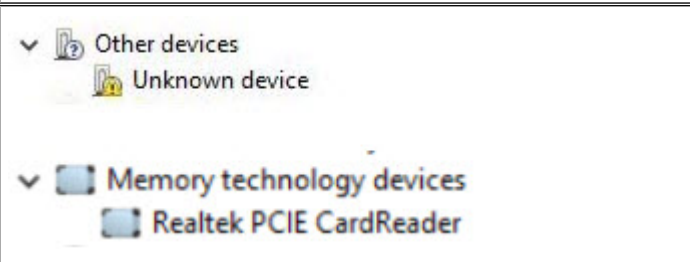
Realtek HD audio drivers

Verify if the Realtek audio drivers are already installed in the tablet.

Before installation	After installation
<ul style="list-style-type: none"> Audio inputs and outputs <ul style="list-style-type: none"> Microphone (High Definition Audio Device) Speakers (High Definition Audio Device) Sound, video and game controllers <ul style="list-style-type: none"> High Definition Audio Device Intel(R) Display Audio 	<ul style="list-style-type: none"> Audio inputs and outputs <ul style="list-style-type: none"> Microphone Array (Realtek High Definition Audio(SST)) Speakers / Headphones (Realtek High Definition Audio(SST)) Sound, video and game controllers <ul style="list-style-type: none"> Intel(R) AVStream Camera 2500 Intel(R) Display Audio Realtek High Definition Audio(SST)

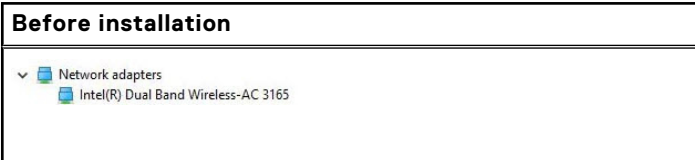
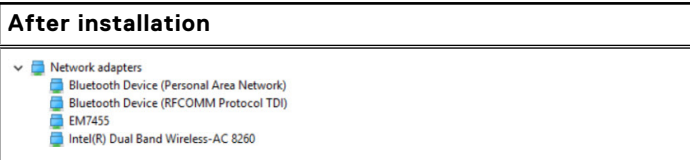
Realtek RTS5242-GR Card Reader drivers

Verify if the Realtek RTS5242-GR Card Reader drivers are already installed in the tablet.

Before installation	After installation
	

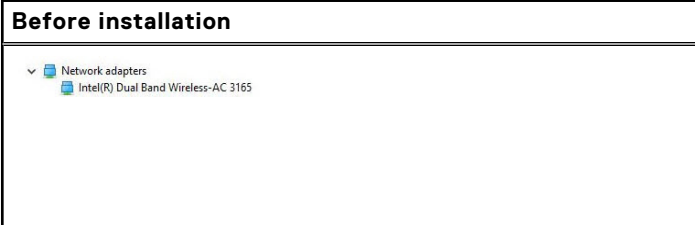
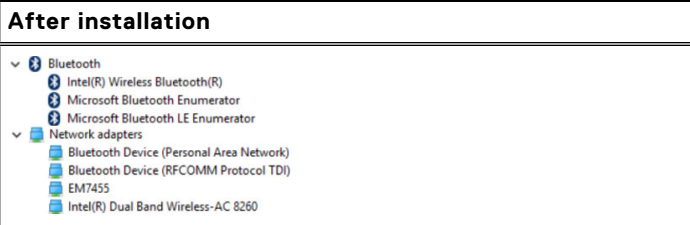
Realtek LAN network drivers

Verify if the Realtek LAN network drivers are already installed in the tablet.

Before installation	After installation
	

Intel Wireless 3165 WiFi and Bluetooth drivers

Verify if the Intel Wireless 3165 WiFi and Bluetooth drivers are already installed in the tablet.

Before installation	After installation
	

System LED diagnostics

The power LED states are shown in following table.

Power LED state	Description
Solid white	Power adapter is connected and the tablet is charging.
Amber	Tablet is running on battery and the battery has less than 10 percent charge. i NOTE: If you try turning on the tablet when the battery charge is critically low, the status light blinks amber in sequence of three on/off cycles indicating that the tablet cannot be turned on with this charge level.
Off	<ul style="list-style-type: none"> Power adapter is connected and the battery is fully charged. Tablet is running on battery and the battery has more than 5 percent charge. Tablet is in standby, hibernate, or turned off.

⚠ WARNING: The power LED only serve as an indicator of the progress through the POST process. These LEDs do not indicate the problem that caused the POST routine to stop.

This tablet does not ship with legacy 4 quad pack diagnostic LEDs which are at the front of the chassis next to the power button. It is now relying on the power LED light blinking amber pattern to determine failures.

i **NOTE:** Amber LED blinking pattern: The Power Button LED shall blink the corresponding LED codes for the corresponding fault condition. The repeated pattern has a long pause inserted in the middle.

For example, if the memory is not detected, the Power Button LED blinks two times followed by a pause, blinks three times, and pause. This pattern continues until the system is powered off.



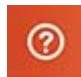
The following table depicts the LED patterns with possible troubleshooting solution.

LED pattern	Problem description
2,1	CPU failure
2,2	System board: BIOS and ROM failure
2,3	No memory or RAM detected
2,4	Memory or RAM failure
2,5	Invalid memory installed
2,6	System board or chipset error
2,7	LCD failure
3,1	CMOS battery failure
3,2	PCI or video card or chip failure
3,3	Recovery image not found
3,4	Recovery image found but invalid

Getting help and contacting Dell


Self-help resources


You can get information and help on Dell products and services using these self-help resources:

Information about Dell products and services	www.dell.com
Windows 8.1 and Windows 10	Dell Help & Support app 
Windows 10	Get started app 
Windows 8.1	Help + Tips app 
Accessing help in Windows 8, Windows 8.1, and Windows 10	In Windows search, type Help and Support , and press Enter .
Accessing help in Windows 7	Click Start > Help and Support .
Online help for operating system	www.dell.com/support/windows www.dell.com/support/linux
Troubleshooting information, user manuals, setup instructions, product specifications, technical help blogs, drivers, software updates, and so on	www.dell.com/support
Learn about your operating system, setting up and using your tablet, data backup, diagnostics, and so on.	See <i>Me and My Dell</i> at www.dell.com/support/manuals .

Contacting Dell

To contact Dell for sales, technical support, or customer service issues, see **www.dell.com/contactdell**.

 **NOTE:** Availability varies by country and product, and some services may not be available in your country.

 **NOTE:** If you do not have an active internet connection, you can find contact information on your purchase invoice, packing slip, bill, or Dell product catalog.