

USM-260

7th/6th Generation Intel® Desktop Series Multiple Functional Box PC



DeviceOn/iService

Features

- Equipped with DeviceOn/iService software remote device management
- Embedded Intel® 7th/6th Generation Kaby Lake/Skylake desktop 35W Core™ i7/i5/i3, Pentium® and Celeron® processors
- Compact Design for space saving
- Easy access to dual 2.5" HDD/SSD tray in front cover
- Dual Display: DP+HDMI or DP+VGA or HDMI+VGA
- Multiple IO with up to 8 x USB, 2 x LAN, 4 x COM is suitable for variety of application requests
- Easy/quick installation for expansion parts (Mini PCIe) and RAM and mSATA
- Flexibility for mounting : VESA, Wall/Desk



Introduction

USM-260 is an intelligent multi-functional box PC equipped with the 7th/6th generation Intel desktop processor. The system's compact design and multiple IO interface support to integrate in diverse peripherals and various application solutions that targeted at a wide range of applications (eg. Self-service system, POS system, Digital Signage Player, Edge Computing, AI and so on) in semi-industrial, retail and hospital markets.

Moreover, USM-260 is equipped with Advantech's DeviceOn/iService software, which is a next-generation unified device management solution based on the WISE-DeviceOn platform. With support for batch operations and multi-device control, DeviceOn/iService enables easy device configuration and deployment for convenient remote device management

Specifications

Processor	Intel 7th Generation CPU	Core i3-7101TE	Core i5-7500T	Core i7-7700T		
	Max Speed	3.4G	3.3G	3.8G		
	Intel 6th Generation CPU	Celeron G3900TE	Pentium G4400TE	Core i3-6100TE	Core i5-6500TE	Core i7-6700TE
	Max Speed	2.3G	2.4G	2.7G	3.3G	3.4G
Memory	TDP	35W(With Smart Fan)				
	Chipset	H110				
	Technology	Dual channel DDR4 2133 MHz SDRAM (Non-ECC)				
	Max Capacity	Up to 32GB (16GB per SO-DIMM)				
Storage	Socket	2 x 260-pin SO-DIMM				
	SATA 3.0	2				
	mSATA	1 (by Mini card slot support)				
	Capacity	Integrated Intel® HD Graphics 530				
Graphic	HDMI	Max. resolution 4096 x 2160 @ 24 Hz (HDMI 1.4)				
	Display Port	Max. resolution 4096 x 2160 @ 60Hz				
	VGA	Max. resolution 1920 x 1200 @ 60 Hz				
	Dual Display	DP+HDMI, DP+VGA, HDMI+VGA				
Ethernet	Interface	10/100/1000 Mbps				
	Controller	Realtek RTL8111G GbE LAN				
Audio	Interface	ALC662				
	Front IO					
Rear IO	USB2.0	0 (Optional 4xUSB)				
	HDD Slot	1 (Optional 2 Slots)				
	VGA	1				
	HDMI	1				
	Display Port	1				
	RJ-45	2				
	USB3.0	4				
	Serial	(Optional 4 x COM)				
	Audio	COM2, COM3, COM4 support RS-232 with selectable RI/ 5V/ 12V power, COM1 support RS-232/422/485with selectable RI/ 5V/ 12V power				
	DC Jack	1 x Line-out, 1 x Mic-in				
Expansion	Mini PCIe	1 F/S miniPCIe slot support mSATA; 1 H/S miniPCIe slot support PCIe/USB device				
MISCELLANEOUS	Color	Black				
	Dimension	240 x 210 x 57mm(L x W x H)				
	Power	19V, 90W				
Mounting Mode	ACCESSORIES	VESA, Wall Mounting, Desktop				
Software	OS	WES7P, Win10, POSReady7, Linux Ubuntu 18.04				
Environment	Operating Temperature	HDD: 0~40 °C, SSD: 0 ~ 50 °C				
	Storage Temperature	-40 ~ 85 °C (-40 ~ 185 °F)				
	Relative Humidity	90% @ 40 °C (non-condensing)				
	Vibration during operation	With HDD: 0.5Grms, IEC 60068-2-64, random 5-500HZ, 3 axes, 1hr/axis				
Certification	Shock during operation	With HDD: 10 G, IEC 60068-2-27, half sine, 11 ms duration				
		CCC/BSMI/CE/FCC/UL/CB				

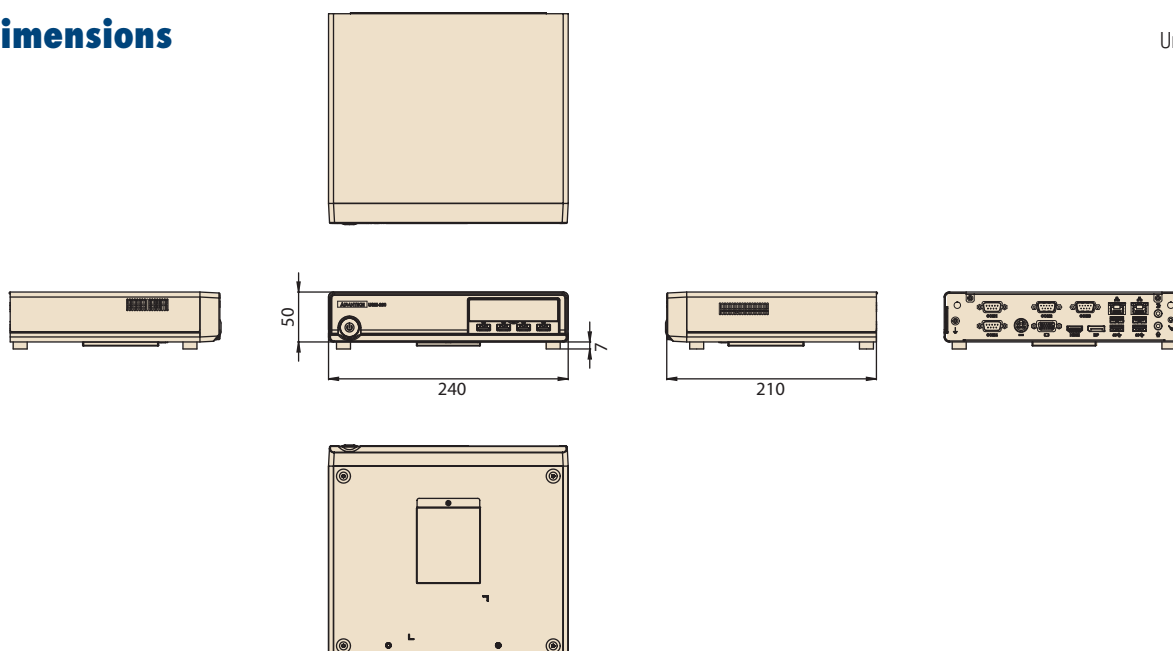
Specifications (Cont.)

DeviceOn/iService Remote Device Management	Operating System	Windows 10
	Common Controls (Reboot, Shutdown)	✓
	Remote desktop	✓ (VNC)
	Device-Specific Controls(Audio controls)	✓
	Connection Status	✓
	Hardware Status	✓
	Hard Disk Status	✓
	Batch Operation Support	✓
	OTA Storage Management	FTP
	OTA Software Updates	✓
	Software Watchlist	✓
	Software Start/Stop	✓
	Peripherals Watchlist	✓

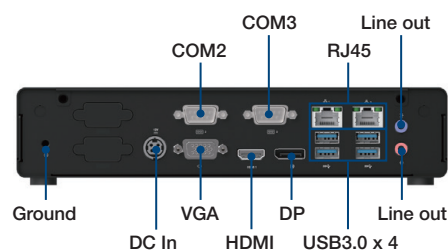
Note: DeviceOn/iService software must be downloaded from the Advantech website at <https://www.advantech.com/search/?q=DeviceOn%2FiService&st=support&sst=Utility>

Dimensions

Unit: mm



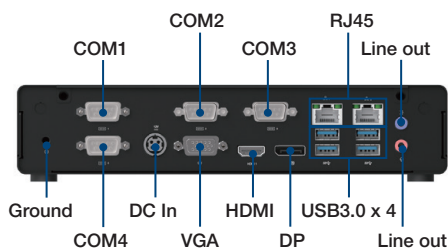
Standard – Integrated I/O



Fully- Integrated I/O



4 x USB2.0 (Optional)



Ordering Information

PN	Description	Front Panel		Rear Panel						
		USB2.0	HDD/SSD Slots	DP	HDMI	VGA	LAN	USB3.0	COM	Audio
USM-260F-BST00	Intel Skylake LGA1151 Desktop Platform Mini BOX PC w/o CPU and RAM and Storage, Standard Version	0	1	1	1	1	2	4	2	2
USM-260F-BFL00	Intel Skylake LGA1151 Desktop Platform Mini BOX PC w/o CPU and RAM and Storage, Full Version	4	2	1	1	1	2	4	4	2

Accessory

Accessory	PN	Description
CPU	96MPI3K-3.4-3M11T	CORE 3.4G 3M 1151P 2CORE I3-7101TE
	96MPI5K-2.7-6M11T	CORE 2.7G 6M 1151P 4CORE I5-7500T
	96MPI7K-2.9-8M11T	CORE 2.9G 8M 1151P 4CORE I7-7700T
	96MPCLS-2.3-2M11T	CELERON 2.3G 2M 1151P G3900TE
	96MPPS-2.4-3M11T	PENTIUM 2.4G 3M 1151P 2 CORE G4400TE
	96MPI3S-2.7-4M11T	CORE 2.7G 4M 1151P 2 CORE I3-6100TE
	96MPI5S-2.3-6M11T1	CORE 2.3G 6M 1151P 4 CORE I5-6500TE
	96MPI7S-2.4-8M11T1	CORE 2.4G 8M 1151P 4 CORE I7-6700TE
RAM	AQD-SD4U4GN24-SG	4G, DDR4 260 PIN 2400 Mhz SODIMM
	AQD-SD4U8GN24-SE	8G, DDR4 260 PIN 2400 Mhz SODIMM
	AQD-SD4U16N24-HE	16G, DDR4 260 PIN 2400 Mhz SODIMM
	SQF-S25M4-64G-S9C	SQF 2.5" SSD 630 64G MLC (0~70°C)
Storage	SQF-S25M4-128G-S9C	SQF 2.5" SSD 630 128G MLC (0~70°C)
	SQF-S25M4-256G-S9C	SQF 2.5" SATA SSD 630 256 MLC (0~70°C)
	SQF-S25V2-128G-SBC	SQF 2.5" SATA SSD 640 128G BiCS3 3D NAND (0~70°C)
	SQF-S25V4-256G-SBC	SQF 2.5" SATA SSD 640 256G BiCS3 3D NAND (0~70°C)
	96ND500G-ST-SG5KA1	SEAGATE 500G 2.5" SATAIII 5KRPM 16M(G)24*7
	SQF-SMSM4-64G-S9C	SQF MSATA 630 64G MLC (0~70°C)
	SQF-SMSM4-32G-S9C	SQF MSATA 630 32G MLC (0~70°C)
Wi-Fi Module	EWM-W135H01E	802.11 a/b/g/n, Atheros AR9382, 2T2R
	1750007465-01*2	Antenna Cable SMA(FR)/Mini coaxia L30cm
	1750008717-01*2	Dipole Ant. D.B 2.4/5G WIFI 3dBi SMA/M-R BLK(outer antenna)
	EWM-W168H01E	RTL8822BE-CG 802.11 a/b/g/n/ac WIFI with Bluetooth 4.2 combo ,2T2R
	1750007965-01*2	Antenna Cable R/P SMA (M) to MHF4, 300mm
	1750008717-01*2	Dipole Ant. D.B 2.4/5G WIFI 3dBi SMA/M-R BLK(outer antenna)
Power Cord	96CB-POWER-B-1.8MB	RW0.75 Black/3L 1.8M(CCC)
	1700001524	3P UL 10A 125V 180cm(American)
	170203183C	3P EU (WS-010+083) 183CM(European)
	1700018553	Power Cord SAA 3P 2.5A 250V 183cm(Australia)
	1700025113-11	Power Cord ISI 3P 2.5A 250V 180cm(India)
	1700018409	Power Cord KCC 2P 2.5A 250V 183cm(Korea,Russia)
	1700024849-01	Power Cord BSMI 3P 2.5A 125V 180cm(Taiwan)
	170203180A	Power Cord BSI 3P 2.5A 250V 183cm(UK)
	1700008921	3P 1.8M PSE 7A 125V(Japan)
Windows OS	20706WSR7S0002	img PR7 USM-260 64b V1.0 ENU
	20706WE7PS0013	img WES7P USM-260 64b 1709 10 MUI
	20708WX9ES0009	img W10 19EL USM-260 64b 1809 MUI for Celeron/Pentium
	20708WX9VS0006	img W10 19VL USM-260 64b 1809 MUI for Core i3/i5
	20708WX9HS0001	img W10 19HL USM-260 64b 1809 MUI for Core i7

Notes : Can support Ubuntu 18.04 or higher by request

Mounting Kit

Mounting	Part Number	Description	Amount
Wall Mount	1960073138N101	VESA SUPPORT FOR UBX-310D(BLACK 7C)	2
	1930000228	Screw M3*10L S/S D=4.9 H=1 2+ ST/H Zn	4
VESA Mount	1950020055N001	VESA BRACKET ASSY FOR UBX-310D(BLACK 7C)	1
	1960073138N101	VESA SUPPORT FOR UBX-310D(BLACK 7C)	2
	1930000228	Screw M3*10L S/S D=4.9 H=1 2+ ST/H Zn	4
	1930030500	S/S D=5.0 H=1 120°(2+) M3*5L ST Ni	4

DeviceOn/iService

Unified Remote Device Management Software



Features

- Supports Advantech devices equipped with Windows, Android, and Linux OS
- Flexible device, location, user, and permissions management
- Enables remote monitoring and control of hardware, software, and peripherals
- Supports over-the-air (OTA) firmware and software updates
- Ensures quick, easy, and secure device onboarding
- RESTful APIs for third-party system integration

Introduction

Advantech's DeviceOn/iService is a next-generation unified device management solution based on the WISE-DeviceOn platform. Designed to enable centralized monitoring and remote management, DeviceOn/iService supports Advantech devices equipped with Windows, Linux, or Android operating systems. The software also supports the management of applications and integrated peripherals, such as a barcode scanner, card reader, camera, and printer. Users can remotely access and control connected devices, take screenshots, rollout OTA upgrades, and use remote desktop capabilities for troubleshooting from any location at any time. Moreover, DeviceOn/iService supports batch operations to facilitate the management of multiple devices simultaneously for easy and convenient device configuration and deployment.

Total Management



Devices & Hardware

- Windows, Linux, Android
- Hardware, storage, battery



Software & Peripherals

- Software monitoring & access
- Screens, USB devices, printers



Open for Expansion

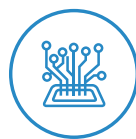
- Peripheral integration
- Open APIs for integration

Remote Access



Real-Time Monitoring

- Connection/hardware status
- Software/peripheral status
- Failure notifications



Remote Controls

- Power controls
- Audio, backlight controls
- Software controls



Troubleshooting

- Screenshots
- Remote desktop support

Operational Efficiency



OTA updates

- System/software updates
- File repository management
- App store



Batch Controls

- 1-to-many batch reboot, etc.
- Time-saving tasks



Setup Booster

- Software/peripheral watchlist
- Roles, rule templates

Note: Some functions may vary according to the product

System Architecture

