



HP EliteBook 840 G5 RAM Replacement

The Random Access Memory, or RAM, is a hardware...

Written By: Ryan McMullen



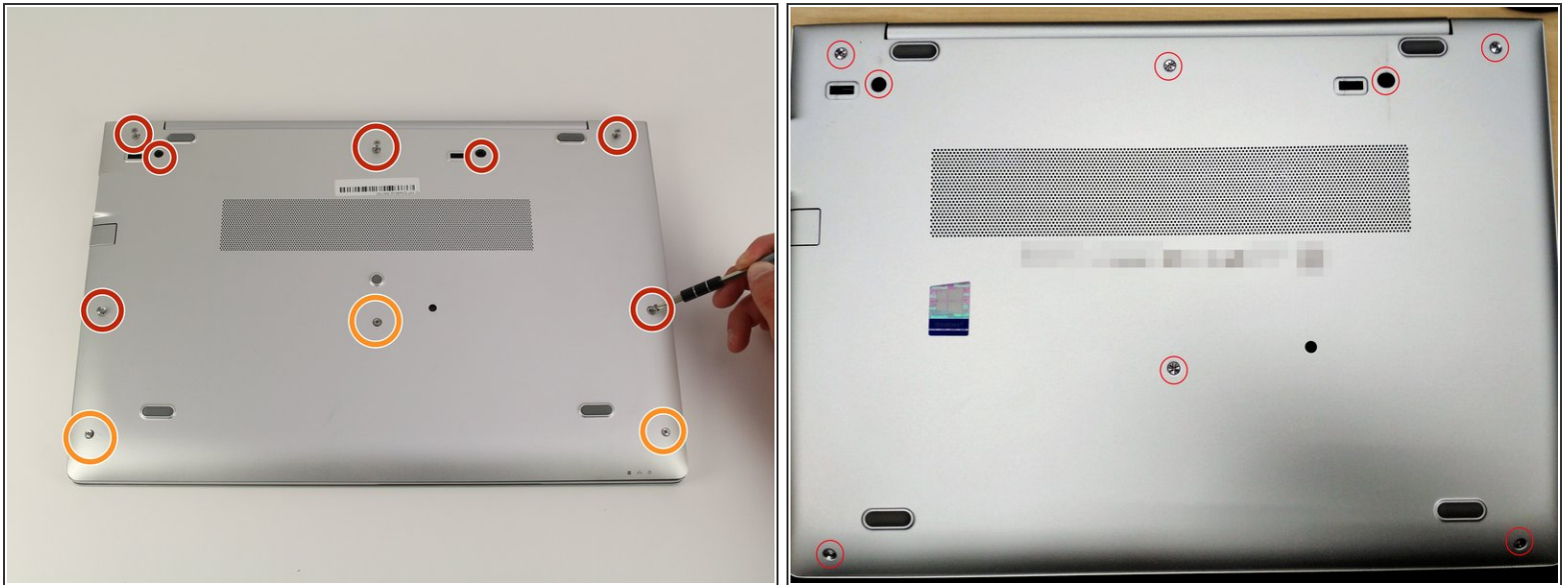
INTRODUCTION

The Random Access Memory, or RAM, is a hardware memory built into computers for short-term memory. If you are experiencing difficulties with web pages loading extremely slow, or other symptoms of a faulty RAM storage, then here is the step-by-step guide to replacing the RAM storage within your HP Elitebook 840 G5. Ensure that you proceed with caution when moving the fragile sticks to the side when accessing the RAM during disassembly.

TOOLS:

- [Phillips #1 Screwdriver](#) (1)
 - [iFixit Opening Tool](#) (1)
-

Step 1 — Back Cover



- Use a Phillips #1 screwdriver to undo the five screws. The top three screws are 10 mm and the two side screws are 7 mm.
- Unscrew the bottom three screws using the same screwdriver.
- ⓘ The bottom Phillips #1 screws don't remove from the back plate, but do need to be unscrewed.
- ⓘ Some models have a slightly different screw configuration, shown in the second photo.

Step 2



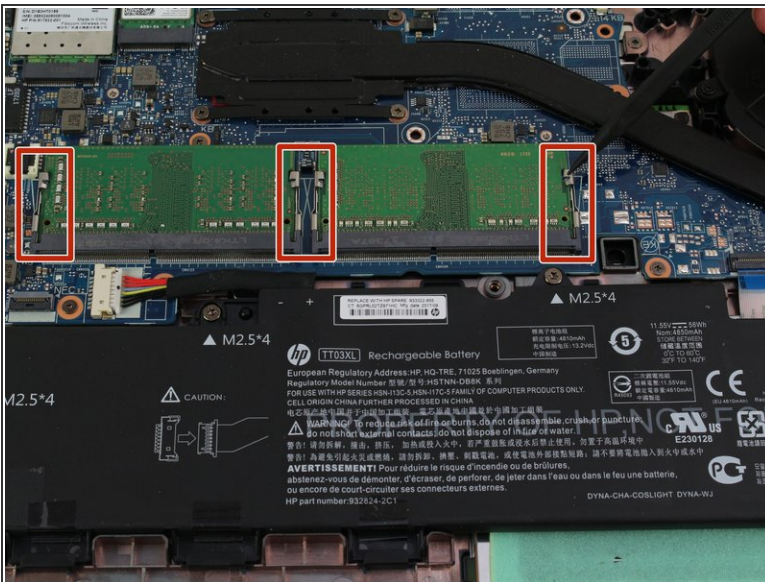
- Turn computer so that the hinged side is facing up.
 - Use the plastic opening tool to pry open the back plate.
 - Drag the plastic opening tool along the edge from left to right and use a second opening tool to pry open the top right corner.
 - Repeat the 3rd step for the other side.
 - Repeat on Left and Right sides of the system. There are two points in the middle (on the left and right sides of the center screw) that will release with slight lifting pressure.
- i** You should be able to hear a pop when prying open the corners.

Step 3



- Grab the back plate and separate it slowly away from the device.
- ⓘ No wiring is connected to the back plate. Separate with caution, as there are electric components on the inside.

Step 4 — RAM



- Using your fingers, remove the clips on the sides of the sticks of RAM by pulling up and towards you.

Step 5



- Once the side gates are removed the stick of RAM will pop up and you can pull it out.

To reassemble your device, follow these instructions in reverse order.