



The entire system is further supported with another WhisperGreen Select vent fan in the primary bathroom. This fan improves indoor air quality and provides mold and mildew control by exhausting stale, moist, polluted air from the home. Our Pick-a-Flow™ speed selector allows you to select the required airflow setting with the simple flip of a switch. Multi-speed allows you to select the proper CFM settings to satisfy ASHRAE 62.2 continuous (whole house) ventilation requirements. Further customization is possible with the addition of a motion and/or condensation sensor, and/or LED night light. All of which is designed to allow you to maximize the performance and energy efficiency of the system.

Whole house comfort from season to season. Energy efficiency and healthy indoor air quality (IAQ). The Total Home Comfort Solution. Only from Panasonic.

TOTAL HOME COMFORT SOLUTION BENEFITS AND ADVANTAGES:

- Maintains a comfortable temperature all year long
- Improves IAQ by reducing moisture and airborne pollutants
- Provides balanced airflow for fresh air throughout the entire house
- Can be used to comply with ASHRAE 62.2, LEED and ENERGY STAR 3.0

HOW THE PANASONIC TOTAL HOME COMFORT SOLUTION BENEFITS OUR CUSTOMERS:

- Best-in-class heating, cooling and ventilation ... all in one simple package
- Easy, one-stop shopping
- Simple, space-saving installation
- Energy efficient solution saves the homeowner \$ on their energy bills



To learn more about Panasonic's Total Home Comfort Solution, visit us.panasonic.com/totalhomecomfortsolution

Ventilation Fans

Panasonic Eco Solutions North America
Eco Products Division

Two Riverfront Plaza
Newark, NJ 07102-5490

us.panasonic.com/ventfans

For Distributor Order Information
Phone: 866-292-7299 | Fax: 888-553-0723

Heating and Air Conditioning

Panasonic Corporation of North America
Air Conditioning Group

1690 Roberts Blvd., NW, Suite 110,
Kennesaw, GA 30144

us.panasonic.com/aircon

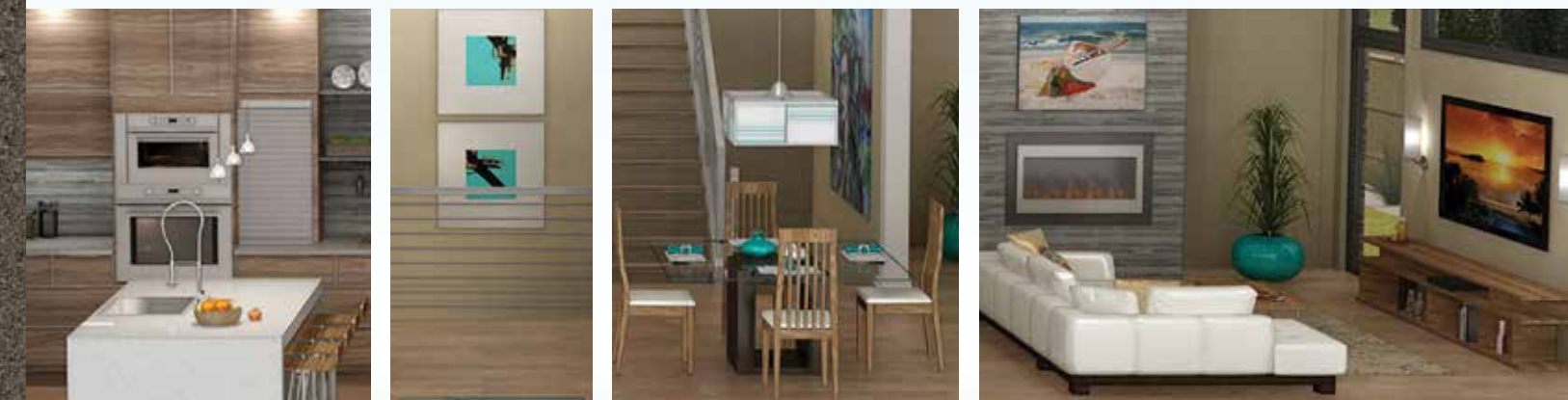
Phone: 800-851-1235

PAC1435VCAT

Panasonic

THE TOTAL HOME COMFORT SOLUTION

HEATING • VENTILATION • AIR CONDITIONING



Affordable. Energy Efficient. Exclusive!



INTRODUCING THE TOTAL HOME COMFORT SOLUTION – ONLY FROM PANASONIC

Traditional Mini-split Systems are designed to heat or cool individual zones. With the Panasonic Total Home Comfort Solution, you can efficiently and cost-effectively heat or cool your entire home.

The Panasonic solution, cool air from the ductless air handler is delivered into the living room area, it's then circulated throughout the house using the high efficiency Whisper Green Select Vent Fan and minimal ducting. WhisperGreen Select is our ground-breaking, fully customizable vent fan that delivers optimum CFM output even at 0.25" static pressure. This ingenious combination of our highly efficient Exteriores Mini-split system and customizable vent fans deliver the necessary airflow to effectively cool both the upper and the lower levels.

In the winter months, the same process is used to heat the entire house. But the Panasonic Total Home Comfort Solution does more than just heat and cool your home. It also plays a vital role in circulating fresh, tempered air throughout your home. Modern homes are designed and built more airtight than ever before to conserve energy, so it's critical to remove stale, potentially contaminated air and replace it on a regular basis with fresh air from outside.

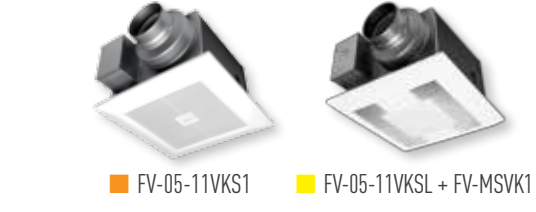
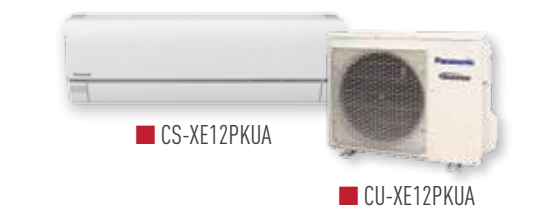
Our Energy Recovery Ventilator (ERV) works to replace stale, inside air with fresh air from outside, while simultaneously transferring the heat from the air being exhausted to the incoming air. In summer, heat is extracted from the warm incoming air and transferred to the cool outgoing air. This constant exchange process helps maintain a comfortable, balanced temperature while working continuously to provide healthy, continuous airflow year round.

PACKAGE 1

One Bedroom 500-1,000 ft²

MODEL NUMBER	DESCRIPTION	QUANTITY
■ CS-XE12PKUA	Wall Mounted Heat Pump - Indoor Unit	1
■ CU-XE12PKUA	Wall Mounted Heat Pump - Outdoor Unit	1
■ FV-05-11VKS1	WhisperGreen Select™ 50-80-110 CFM Distribution Fan	1
■ FV-05-11VKS1 + FV-MSVK1	WhisperGreen Select™ 50-80-110 CFM Exhaust Fan + Motion Sensor Module**	1
■ FV-04VE1	WhisperComfort™ Energy Recovery Ventilator (ERV)	1

*■ Distribution Vent is not included.
**Condensation Sensor module also available (FV-CSVK1)



Deluxe Wall Mounted AC and Heat Pump

- One of the industry's most energy efficient ductless system
- Econavi™
- Easy installation of indoor and outdoor units
- Quiet Operation
- Quick Cooling and Heating, even at Low Ambient Temperatures
- Advanced Inverter Technology for optimum performance at all times

WhisperGreen Select 50-80-110 CFM

- Fully Customizable with Pick-A-Flow & Plug 'N Play Modules
- Intelligent, DC motor with Smartflow™ optimum CFM technology
- Multi-Speed with Time Delay control
- Package also includes our WhisperGreen Select lighted model, which adds the SmartAction® motion sensor module and energy efficient LED light

WhisperComfort Energy Recovery Ventilator (ERV)

- Provides fresh, filtered air to the home
- Tempers incoming air to maintain a comfortable interior temperature
- Helps exhaust stale indoor air and remove pollutants and toxins
- UL listed for ceiling or wall mount

Optional Room to Room Distribution Fan

- Perfect for room-to-room powered circulation with ductless heat pumps
- Powered 60 CFM transfer at less than 0.3 sone
- 26 gauge steel, fire code rated Transfer Register Box (TRB)

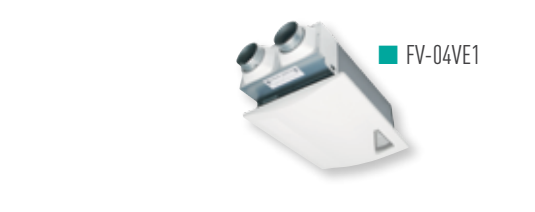
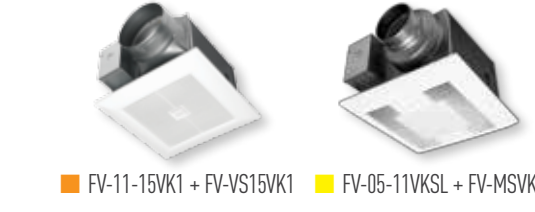


PACKAGE 2

Two Bedroom 800-1,600 ft²

MODEL NUMBER	DESCRIPTION	QUANTITY
■ CS-E24RKUAW	Wall Mounted Heat Pump - Indoor Unit	1
■ CU-E24RKUA	Wall Mounted Heat Pump - Outdoor Unit	1
■ FV-11-15VK1 + FV-VS15VK1	WhisperGreen Select™ 110-130-150 CFM Distribution Fan + Multi-Speed Module	1
■ FV-05-11VKS1 + FV-MSVK1	WhisperGreen Select™ 50-80-110 CFM Exhaust Fan + Motion Sensor Module**	1
■ FV-04VE1	WhisperComfort™ Energy Recovery Ventilator (ERV)	1

*■ Distribution Vent is not included.
**Condensation Sensor module also available (FV-CSVK1)



Deluxe Wall Mounted AC and Heat Pump

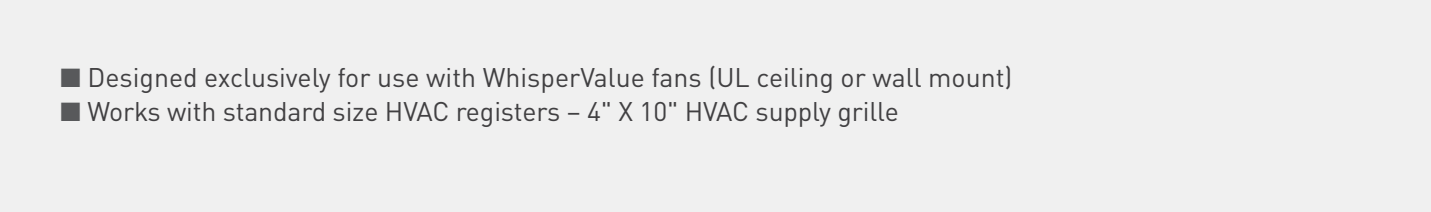
- One of the industry's most energy efficient ductless system
- Econavi™
- Easy installation of indoor and outdoor units
- Quiet Operation
- Quick Cooling and Heating, even at Low Ambient Temperatures
- Advanced Inverter Technology for optimum performance at all times

WhisperGreen Select 110-130-150 CFM Distribution Fan

- Fully customizable with Pick-A-Flow and Plug 'N Play modules
- Intelligent, DC motor with Smartflow™ optimum CFM technology
- Multi-Speed with Time Delay control
- Package also includes our WhisperGreen Select lighted model, which adds the SmartAction® motion sensor module and energy efficient LED light

WhisperComfort Energy Recovery Ventilator (ERV)

- Provides fresh, filtered air to the home
- Tempers incoming air to maintain a comfortable interior temperature
- Helps exhaust stale indoor air and remove pollutants and toxins
- UL listed for ceiling or wall mount




EXTERIOS EXTERIOS E

		WALL MOUNTED HEAT PUMPS			
		XE12PKUA		E24RKUA	
		INDOOR UNIT	OUTDOOR UNIT	INDOOR UNIT	OUTDOOR UNIT
		CS-XE12PKUA	CU-XE12PKUA	CS-E24RKUAW	CU-E24RKUA
Performance & Electrical Ratings					
Capacity	Cooling Btu/h	11,500 (2,800-14,000)		24,000 (5,800-27,200)	
	Heating Btu/h	13,800 (3,000-23,100) (13,500 at 17°F)		28,800 (5,800-29,200)	
Moisture Removal	High Pints/H	2.3		7.6	
Dry Air Flow	High CFM	530		670	715
SEER	Cooling	25.5		19.00	
EER	Cooling	14.35		10.20	
HSPF	Heating	12.0		10.00	
Power Supply	V, Phase, Hz	230/208V, 1PH, 60Hz		230/208V, 1PH, 60Hz	
Running Amps	Cooling A	3.8/4.2		10.8/11.9	
	Heating A	5.2/5.8		11.4/12.6	
Power Input	Cooling W	800 (150-1,050)		2,350 (430-2,720)	
	Heating W	1,150 (150-2,100)		2,500 (380-2,660)	
Back-up Heater	kW	---		---	
Fuse or Circuit Breaker Capacity	A	20		25	
Features					
Controls		Microprocessor		Microprocessor	
Low Ambient Control		Equipped		Equipped	
Wireless Controller		Included		Included	
Wired Remote Controller (optional)		CZ-RD516C		CZ-RD516C-1	
Fan Speeds		5 Speeds + Auto		5 Speeds + Auto	
Timer		24hr Program		24hr Program	
Refrigerant		R-410A		R-410A	
Refrigerant control		Electric Expansion Valve		Electric Expansion Valve	
Air Filter		Washable + Anti Microbial Filter		Washable + Anti Microbial Filter	
Air Deflection	Horizontal	Automatic		Automatic	
	Vertical	Manual		Automatic	
Operation Sound	In(H) / Me / Lo (Dt)	dB-A		45 / 28 / 20	
	Outdoor (Hi)	dB-A		49	51
Refrigerant Piping	Type	Flare		Flare	
	Discharge	inches		1/4"	
	Suction	inches		1/2"	
Refrigerant Pipe Length	Ft.	Max. 66		Max. 100.0	
Elevation Difference*	Outdoor Above	Ft.		Max. 49.2	
	Outdoor Below	Ft.		Max. 49.2	
Dimensions & Weight		INDOOR UNIT	OUTDOOR UNIT	INDOOR UNIT	OUTDOOR UNIT
Height	inches	11-5/8"	27-3/8"	11-7/16"	31-5/16"
Width	inches	34-9/32"	34-15/32"	42-5/32"	34-15/32"
Depth	inches	10-1/16"	12-5/8"	9-15/32"	12-5/8"
Net Weight	Lbs.	24	97	26	132

WhisperGreen Select

		WHISPERGREEN SELECT (FAN ONLY MODELS)																			
		BASE FAN (PRE-INSTALLED MULTI-SPEED WITH TIME DELAY)																			
		FV-05-11VKS1																			
Characteristics (HVI tested data for 0.1" S.P.)	Static Pressure in inches w.g.	0.1	0.25	0.1	0.25	0.1	0.25	0.1	0.25	0.1	0.25	0.1	0.25	0.1	0.25	0.1	0.25	0.1	0.25	0.1	0.25
	Air Volume (CFM)	110	113	100	106	90	95	80	82	70	71	60	66	50	53	40	43	30	33		
	Noise (sones)	<0.3	0.8	<0.3	0.7	<0.3	0.6	<0.3	0.4	<0.3	0.4	<0.3	0.3	<0.3	0.3	<0.3	<0.3	<0.3	<0.3		
	Power Consumption (watts)	9.8	16.1	8.0	14.0	6.5	11.7	5.5	10.2	4.3	8.6	3.6	7.8	3.5	7.0	2.7	5.7	2.4	5.0		
	Energy Efficiency (CFM/Watt)	11.5	7.2	13.0	7.9	14.5	8.5	15.3	8.4	17.2	8.7	17.5	8.8	15.1	8.1	16.3	8.2	14.2	7.6		
	Speed (RPM)	931	1205	895	1179	852	1146	814	1131	772	1112	750	1107	747	1072	731	1073	718	1062		
	Current (amps)	0.10	0.16	0.09	0.14	0.07	0.12	0.06	0.10	0.05	0.09	0.04	0.08	0.04	0.07	0.08	0.06	0.03	0.06		
	MAX. Current (amps)	0.27																			
		120/60																			

		WHISPERGREEN SELECT (FAN ONLY MODELS)																			
		BASE FAN + MULTI-SPEED WITH TIME DELAY MODULE																			
		FV-11-15VK1 + FV-VS15VK1																			
Characteristics (HVI tested data for 0.1" S.P.)	Static Pressure in inches w.g.	0.1	0.25	0.1	0.25	0.1	0.25	0.1	0.25	0.1	0.25	0.1	0.25	0.1	0.25	0.1	0.25	0.1	0.25	0.1	0.25
	Air Volume (CFM)	150	151	130	130	120	121	110	110	100	102	90	96	80	84	70	72	60	62	50	51
	Noise (sones)	<0.3	0.7	<0.3	0.5	<0.3	0.4	<0.3	<0.3	<0.3	<0.3	<0.3	<0.3	0.4	<0.3	0.4	<0.3	0.4	<0.3	0.4	0.8
	Power Consumption (watts)	13.0	22.0	10.0	17.0	7.4	14.1	7.0	13.5	5.6	11.3	4.9	10.7	4.4	9.6	3.8	8.6	3.6	7.7	3.1	6.8
	Energy Efficiency (CFM/Watt)	11.5	6.8	13.1	7.8	16.2	8.6	15.7	8.2	17.9	9.0	18.6	9.0	18.2	8.8	18.4	8.4	16.7	8.1	16.1	7.5
	Speed (RPM)	664	904	635	891	615	884	616	889	603	886	595	891	604	911	602	918	622	919	616	928
	Current (amps)	0.13	0.21	0.10	0.17	0.08	0.14	0.07	0.13	0.06	0.11	0.06	0.11	0.05	0.10	0.05	0.09	0.04	0.08	0.04	0.07
	MAX. Current (amps)	0.33																			
Power Rating (V/Hz)	120/60																				

WhisperComfort

		WHISPERCOMFORT		
		FV-04VE1		
		40 CFM	20 CFM	10 CFM
Characteristics (HVI tested data for 0.1" S.P.)	Static Pressure in inches w.g.	0.1	0.1	0.1
	Air Volume Exhaust (CFM)	40	20	10
	Air Volume Supply (CFM)	30	20	10
	Noise (sones)	0.8	<0.3	N/A
	Power Consumption (watts)	23	21	17
	Speed (RPM)	1479	1292	1095
	Current (amps)	0.15	0.10	0.09
	Power Rating (V/Hz)	120/60		