

DJI MAVIC 3M

Quick Start Guide

快速入门指南

快速入門指南

クイックスタートガイド

퀵 스타트 가이드

Kurzanleitung

Guía de inicio rápido

Guide de démarrage rapide

Guida di avvio rapido

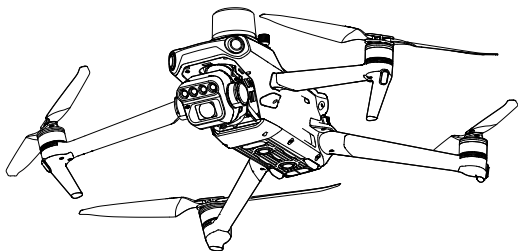
Snelstartgids

Guia de início rápido

Guia de Início Rápido

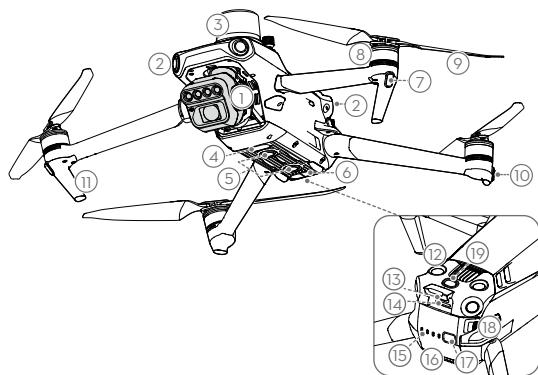
Краткое руководство пользователя

v1.0



Aircraft

DJI™ MAVIC™ 3M features both an Infrared Sensing System and Upward, Downward, and Horizontal Omnidirectional Vision Systems, allowing for hovering and flying indoors as well as outdoors and for automatic Return to Home while avoiding obstacles in all directions. * The built-in DJI AirSense system senses nearby aircraft in the surrounding airspace to ensure safety. With a precise three-axis gimbal to stabilize the high-performance multi-camera payload, the DJI PILOT™ 2 app can be used to view in real-time from the RGB and multispectral cameras. The RTK module provides data for centimeter-level precision positioning accuracy. ** At the same time, the spectral sunlight sensor on top of the aircraft detects solar irradiance in real-time for imaging compensation, maximizing the accuracy of collected multispectral data and improving efficiency for agriculture missions and environmental monitoring.



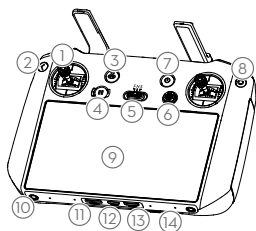
1. Gimbal and Camera
2. Horizontal Omnidirectional Vision System
3. RTK Module
4. Auxiliary Bottom Light
5. Downward Vision System
6. Infrared Sensing System
7. Front LEDs
8. Motors
9. Propellers
10. Aircraft Status Indicators
11. Landing Gears (built-in antennas)
12. Upward Vision System
13. USB-C Port
14. microSD Card Slot
15. Battery Level LEDs
16. Intelligent Flight Battery
17. Power Button
18. Battery Buckles
19. Spectral Sunlight Sensor

* The vision and infrared sensing systems are affected by the surrounding conditions. Read the User Manual for more information.

** This should be used with Network RTK service, a DJI D-RTK 2 High Precision GNSS Mobile Station (purchased additionally) or post-processed kinematic (PPK) data (recommended when RTK signal is weak during operations).

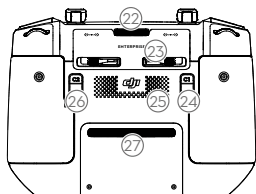
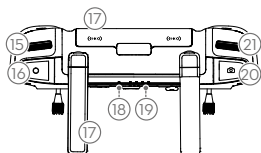
Remote Controller

The DJI RC Pro Enterprise remote controller features O3 Enterprise, the latest version of DJI's signature OCUSYNC™ image transmission technology, and can transmit a live HD view from the camera of the aircraft at a distance of up to 15 km*. The remote controller has a wide range of aircraft and gimbal controls as well as customizable buttons. The built-in microphone allows recording voice and the 5.5-in high brightness 1000 cd/m² screen boasts a resolution of 1920×1080 pixels. Users can connect to the internet via Wi-Fi and the Android operating system comes with a variety of functions such as Bluetooth and GNSS.



1. Control Sticks
2. Back/Function Button
3. RTH Button
4. Flight Pause Button
5. Flight Mode Switch
6. 5D Button
7. Power Button
8. Confirm Button
9. Touchscreen
10. M4 Screw Hole
11. microSD Card Slot
12. USB-C Port
13. Mini HDMI Port
14. Microphone

15. Gimbal Dial
16. Record Button
17. Antennas
18. Status LED
19. Battery Level LEDs
20. Focus/Shutter Button
21. Camera Settings Dial



22. Air Vent
23. Control Sticks Storage Slot
24. Customizable C1 Button
25. Speaker
26. Customizable C2 Button
27. Air Intake

* The remote controller can reach its maximum transmission distance (FCC) in a wide-open area with no electromagnetic interference at an altitude of about 120 m (400 ft).

1. Watching the Tutorials

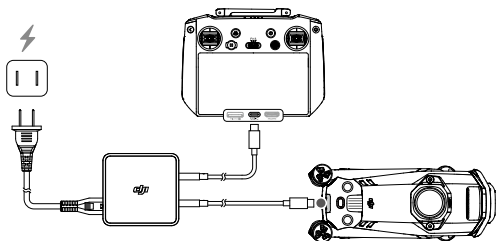
Scan the QR code or visit DJI official website to watch the tutorial videos.



<https://ag.dji.com/mavic-3-m/video>

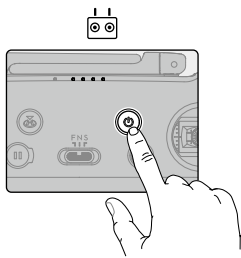
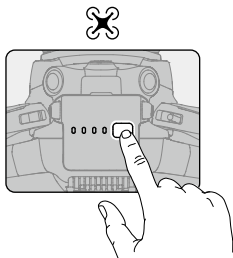
2. Charging the Battery

Charge to activate the Intelligent Flight Battery and the internal battery of the Remote Controller before using it for the first time.

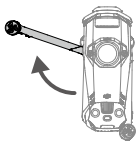


Check battery level: press once.

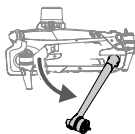
Power on/off: press, then press and hold.



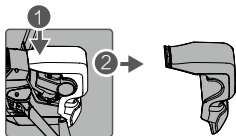
3. Preparing the Aircraft



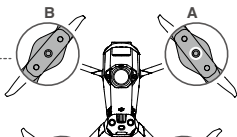
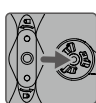
Unfold the front arms



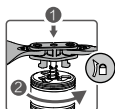
Unfold the rear arms



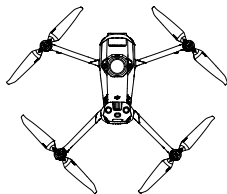
Remove the gimbal protector from the camera



Match the propellers to motors



Press the propellers down and rotate until they click in place



Unfolded



- Unfold the front arms before the rear arms. All arms and propellers must be unfolded before takeoff.