

[Edgecore Networks](#) > [AT&T Portal](#) > [Internal](#)

### Articles in this section

How to enable "NCSI: host to BMC path".

[Internal] Article Management

# How to enable "NCSI: host to BMC path".



jeff\_cheng 鄭皓文

1 minute ago · Updated

Unfollow

## Purpose:

This application note describes the procedures that how to use the python tool to enable "NCSI: host to BMC path".

## Model:

AS5916-54XKS(ADI-G, MSN)

## Preparation:

- A. Laptop with Windows OS and 1GB network card.
- B. Console cable
- C. Console terminal (E.g., Tera Term, PuTTY..etc)
- D. RJ45 cable (Above Cat5e)
- E. Tool (main.exe, console\_port.txt) [Download here](#)

## Limitation factor:

1. Firewall disable temporarily
2. The unit should be operated only in "ONIE: Rescue" mode.
3. The tool should be run as Administrator.
4. Laptop's IP address should be fixed as 192.168.1.20/24
5. This tool could only be used on AS5916-54XKS.
6. Related TFTP applications on the laptop must be closed.

## Procedure:

### STEP1. Plugin RJ45 and console cable to the unit.



### STEP2. Login into ONIE: Rescue mode.

#### A. Enter "ONIE:Rescue"

```
GNU GRUB version 2.02

+-----+
| ONIE: Install OS
| *ONIE: Rescue
| ONIE: Uninstall OS
| ONIE: Update ONIE
| ONIE: Embed ONIE
| DIAG: Accton Diagnostic (accton_as5916_54xks)
+-----+

Use the ^ and v keys to select which entry is highlighted.
Press enter to boot the selected OS, `e' to edit the commands
before booting or `c' for a command-line.
```

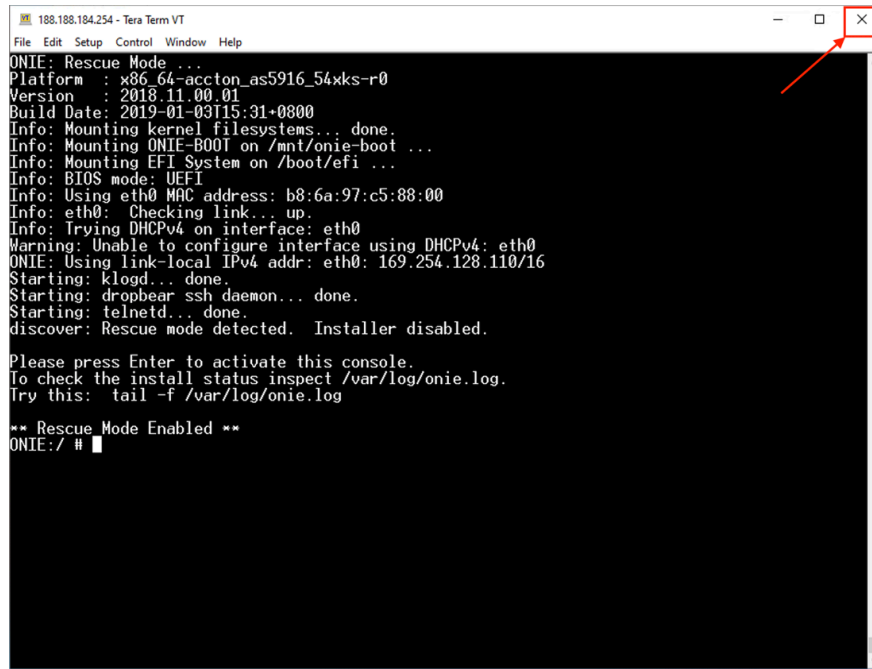
#### B. Wait for startup until "ONIE:/ #" appears.

```
ONIE: Rescue Mode ...
Platform : x86_64-accton_as5916_54xks-r0
Version : 2018.11.00.01
Build Date: 2019-01-03T15:31+0800
Info: Mounting kernel filesystems... done.
Info: Mounting ONIE-BOOT on /mnt/onie-boot ...
ERROR: fsck corrected errors.
Info: Mounting EFI System on /boot/efi ...
Info: BIOS mode: UEFI
Info: Using eth0 MAC address: b8:6a:97:c5:88:00
Info: eth0: Checking link... up.
Info: Trying DHCPv4 on interface: eth0
Warning: Unable to configure interface using DHCPv4: eth0
ONIE: Using link-local IPv4 addr: eth0: 169.254.15.220/16
Starting: klogd... done.
Starting: dropbear ssh daemon... done.
Starting: telnetd... done.
discover: Rescue mode detected. Installer disabled.

Please press Enter to activate this console.
To check the install status inspect /var/log/onie.log.
Try this: tail -f /var/log/onie.log

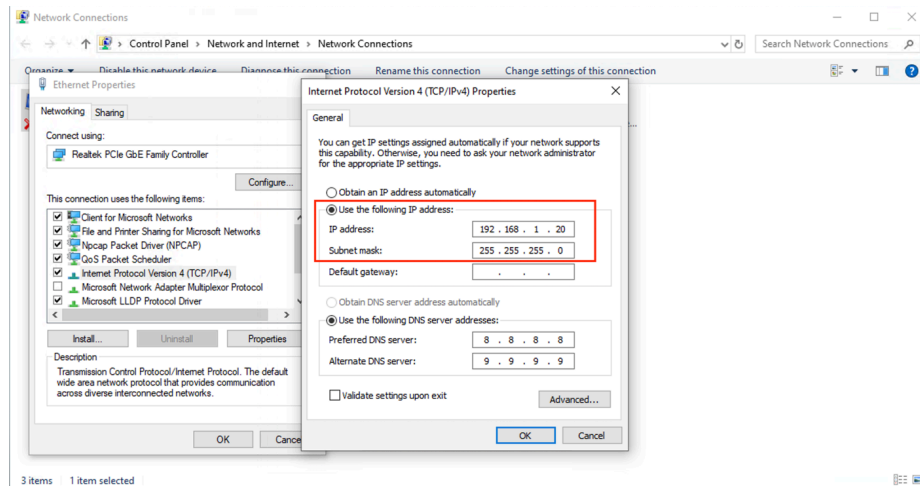
** Rescue Mode Enabled **
ONIE:/ #
```

### STEP3. Close the console terminal is necessary.

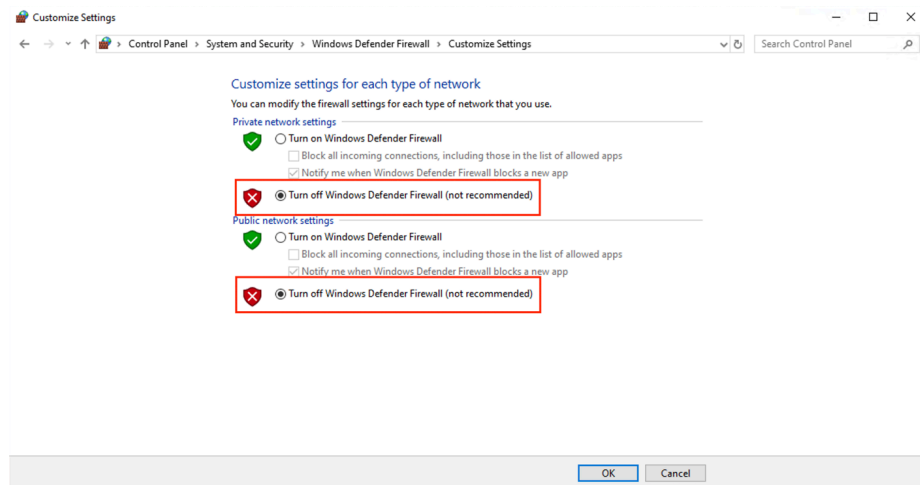


**STEP4. Back to laptop setting.**

A. Set the IP address as 192.168.1.20/24.

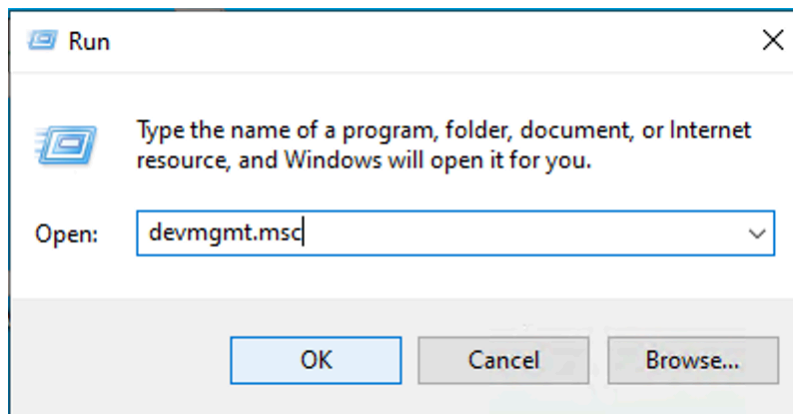


B. Turn off the firewall temporality.

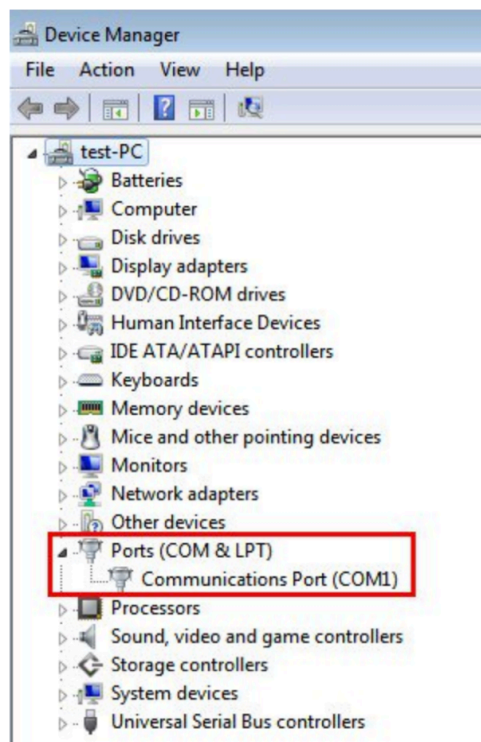


C. Check the console port number and modify the "console\_port.txt" file.

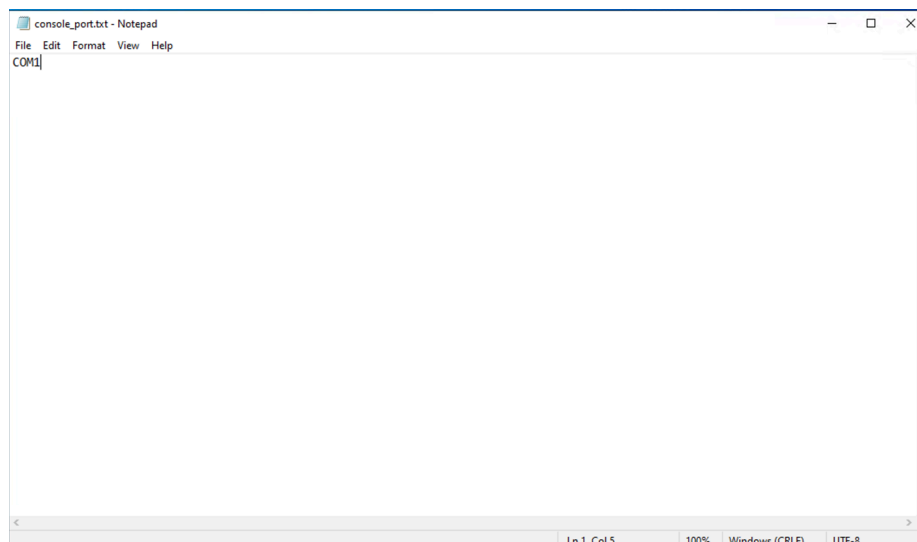
a. Execute "devmgmt.msc".



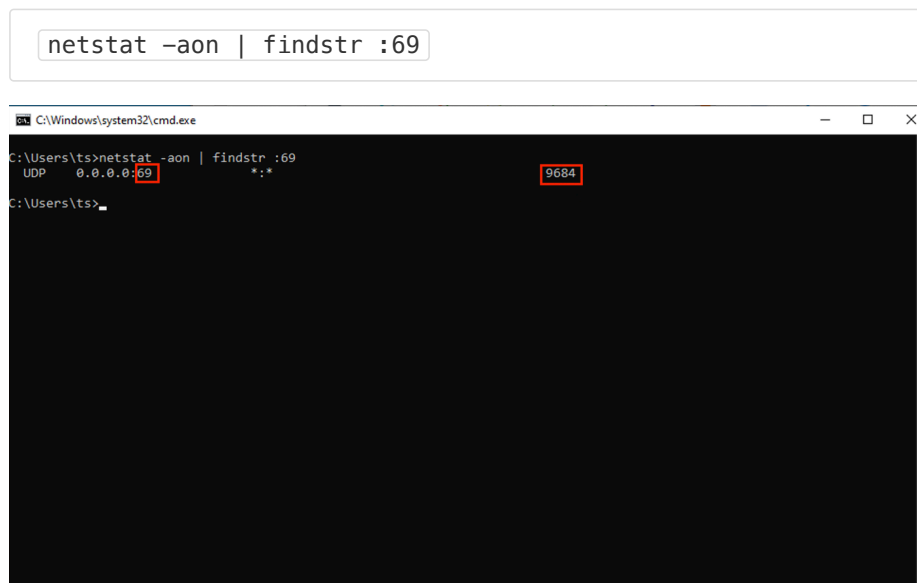
b. Find Ports(COM & LPT). Then, check your port number. (E.g., COM1)



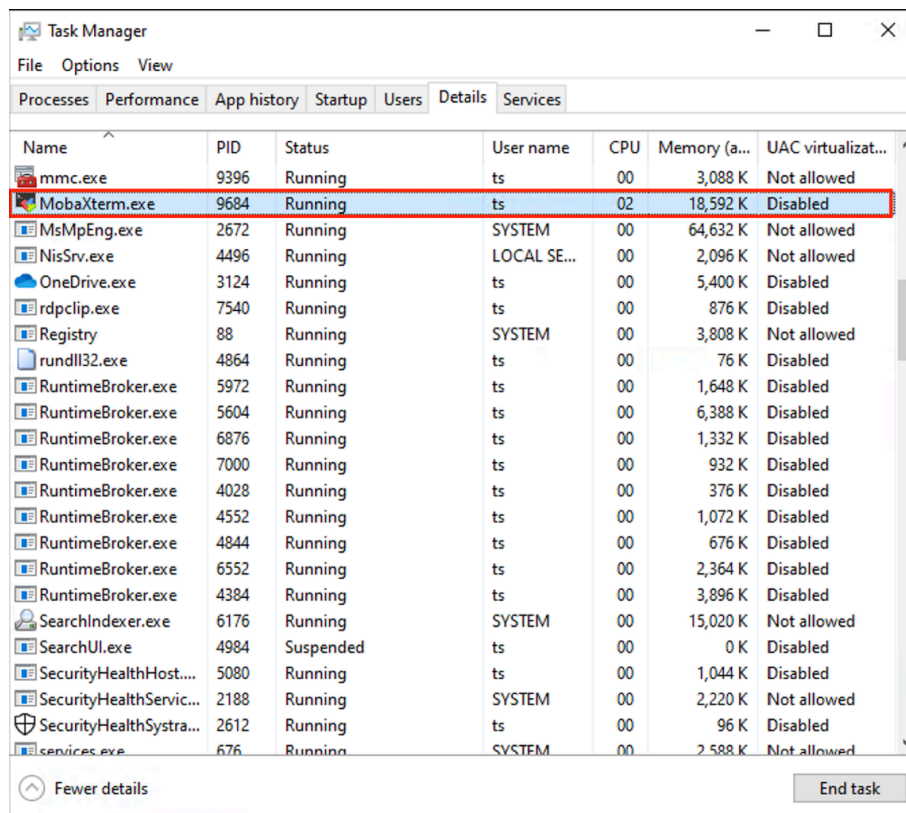
c. Modify the "console\_port.txt" content as COM1 for example.



D. Check if there is any TFTP server on the laptop.

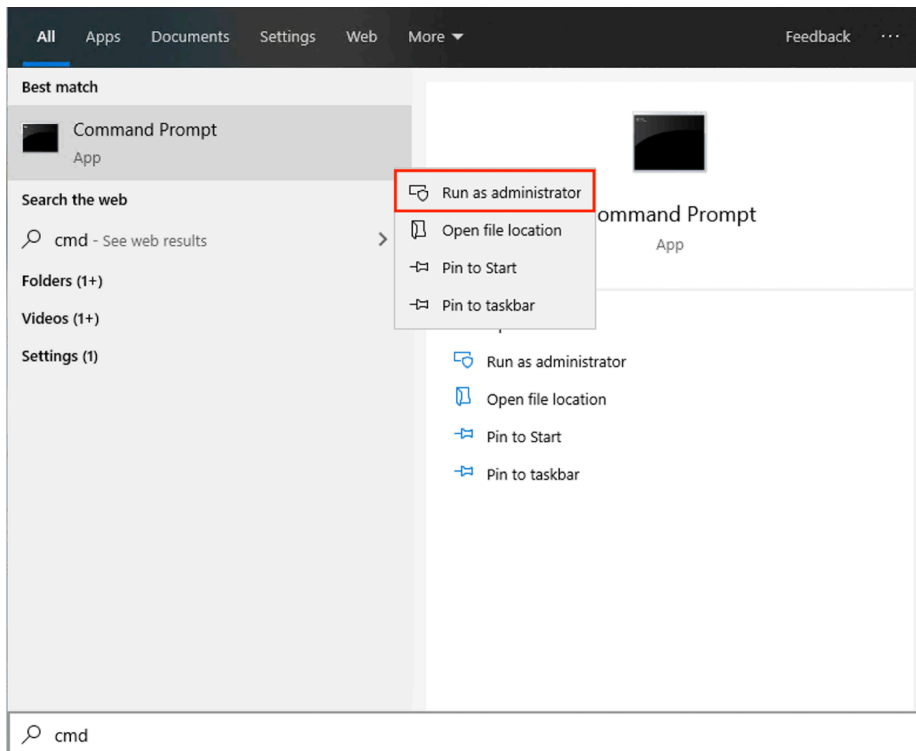


If yes, please end the task. (E.g., PID: 9684)



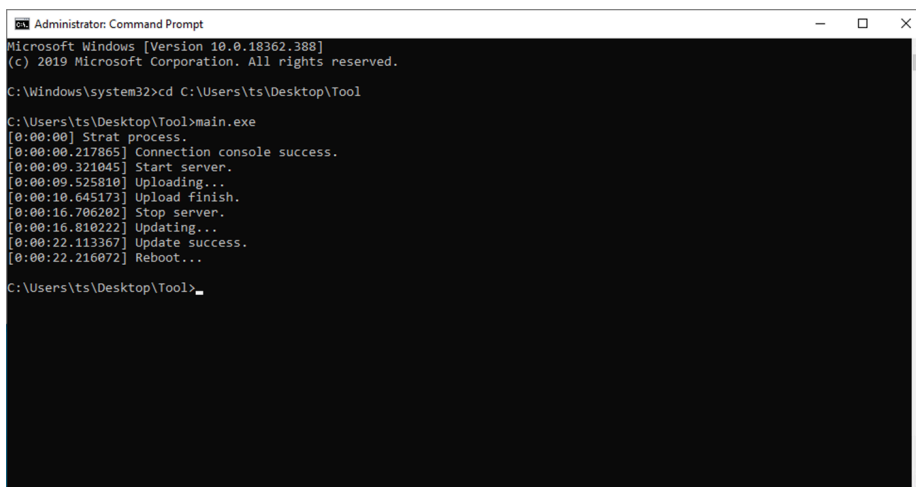
**STEP5. Now start the tool.**

- a. Run the "CMD" as Administrator.



b. Go to the file path and execute "main.exe".

```
C:\Users\ts\Desktop\Tool>main.exe
```



If it succeeds, the unit will auto physical restart. Then, you may upgrade the BMC via TFTP method.

If not, please check the terminal display of the error message.

```
Administrator: Command Prompt
C:\Users\ts\Desktop\Tool>main.exe
[0:00:00] Strat process.
[0:00:00.217868] Connection console success.
[0:00:00.277281] Start server.
[0:00:00.483151] Uploading...
[0:00:00.587090] Upload finish.
[0:00:15.635359] Stop server.
Checksum error.
C:\Users\ts\Desktop\Tool>
```

Checksum error:

The tool cannot be found in the ONIE. (Maybe TFTP server exists cause upload fail or IP address not set). Please double-check the link status between laptop and unit.

In other situations, please submit a ticket to the technical support team.

 [Tool.zip](#)

9 MB · Download



Was this article helpful?

0 out of 0 found this helpful

### Recently viewed articles

[\[Internal\] Article Management](#)

[Authorization - NDA](#)

[\[BIOS\]How to upgrade the BIOS via EFI shell on Edgecore x86 platform switch?](#)

["Soft TX Disable" in DDM transceiver](#)

[\[ONIE\] How to recover ONIE on Edgecore x86 platform switch via USB?](#)

### Related articles

[AS5916-54XL Source \(](#)

[\[Internal\] Article Manag](#)

[Authorization - NDA](#)

### Comments

0 comments



Be the first to write a comment.

---

Edgecore Networks