

# 1070KE/KE-7090

## SERVICE MANUAL

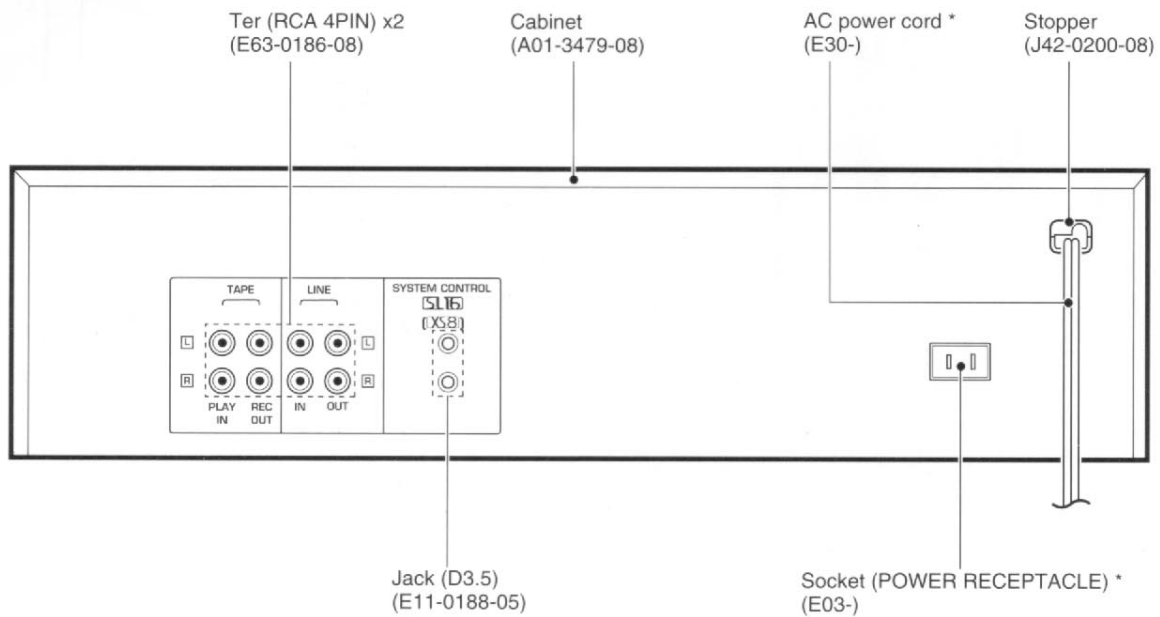
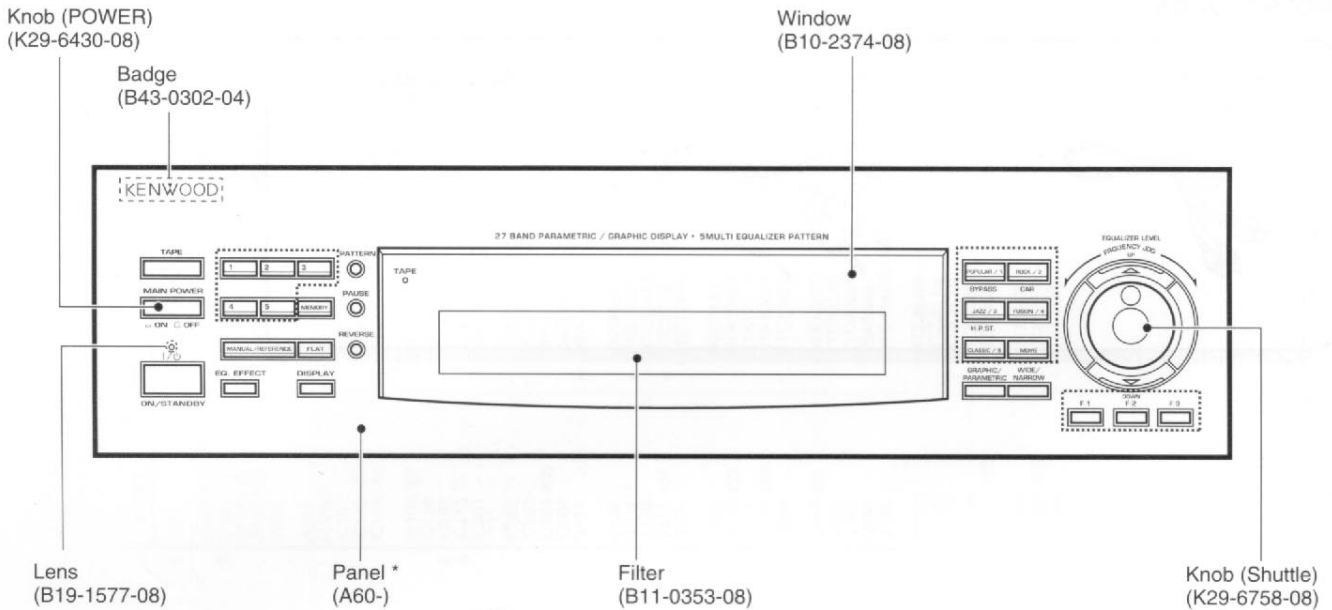
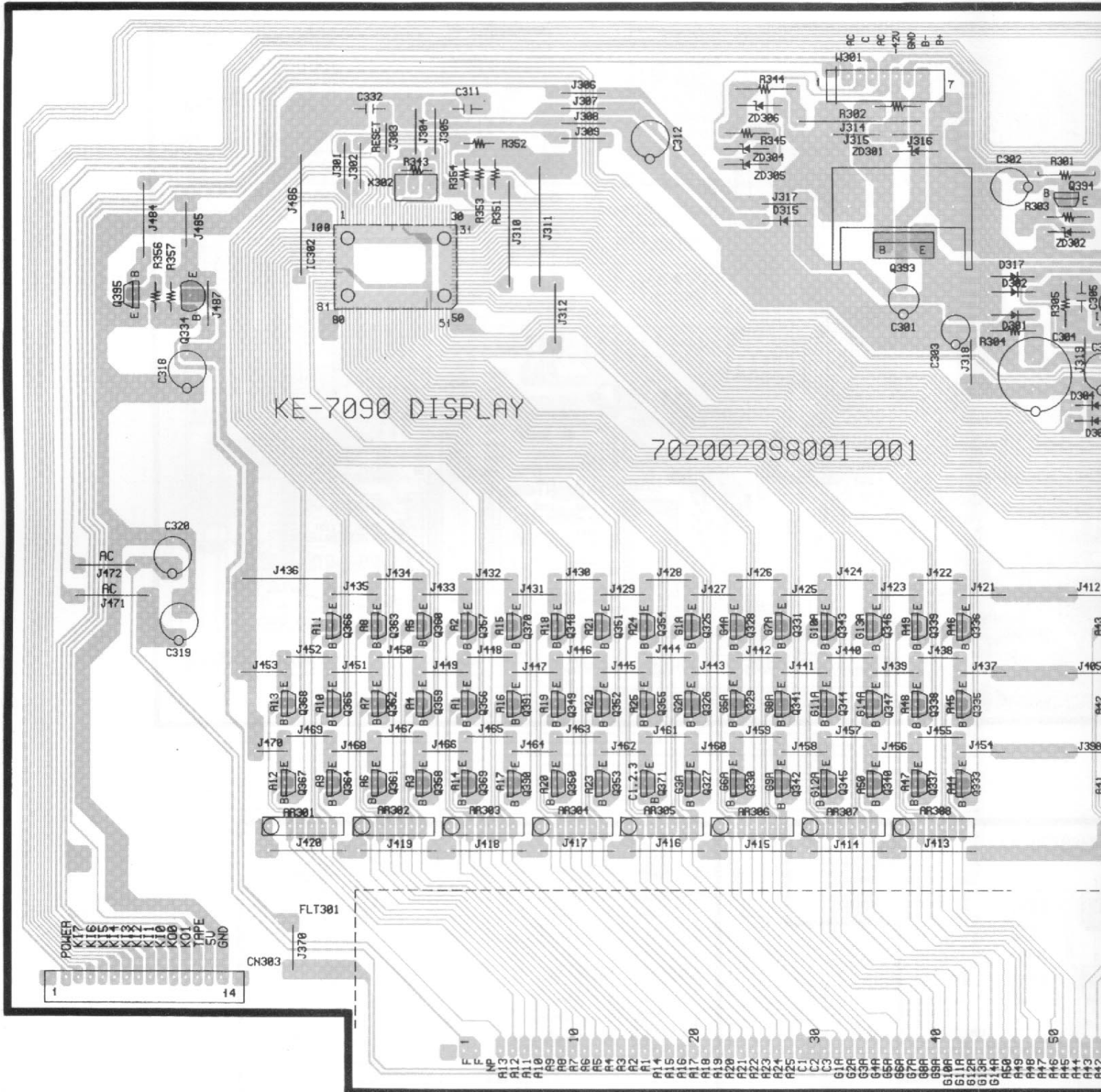


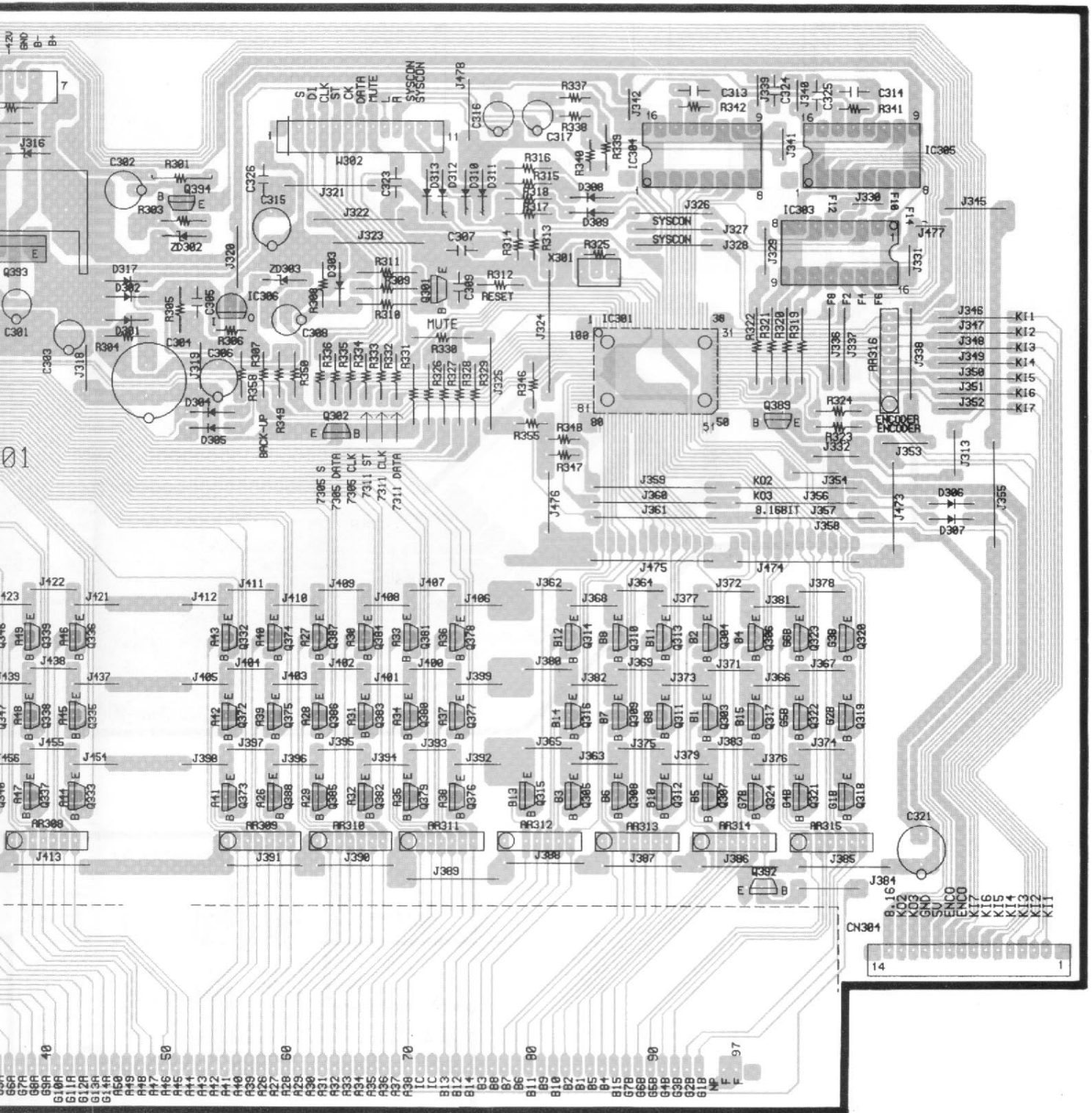
Illustration is KE-7090.

\* Refer to parts list on page 18.

# (PC BOARD(Component side view))

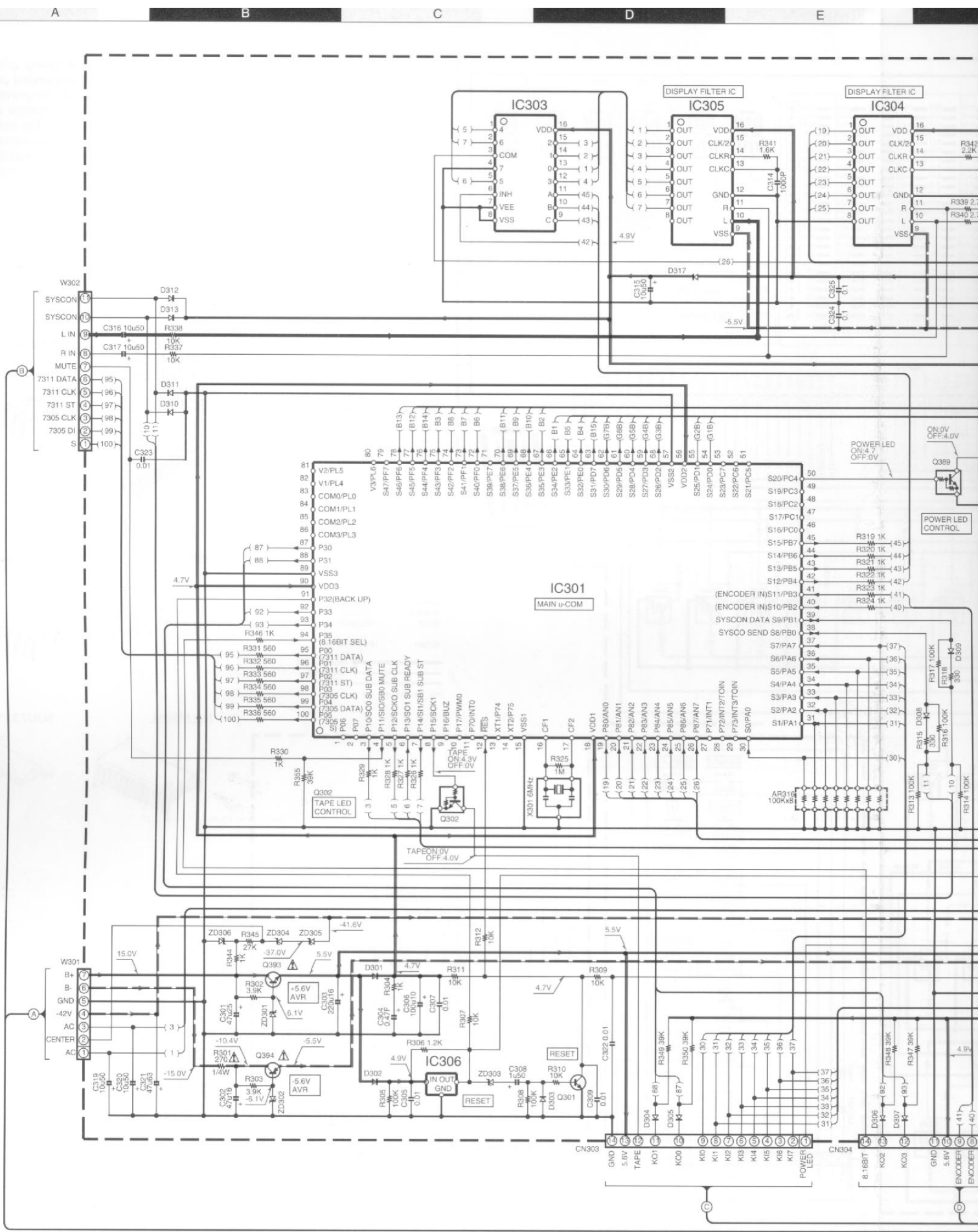


Refer to the schematic diagram for the value of resistors and capacitors.









A

B

C

D

E

2

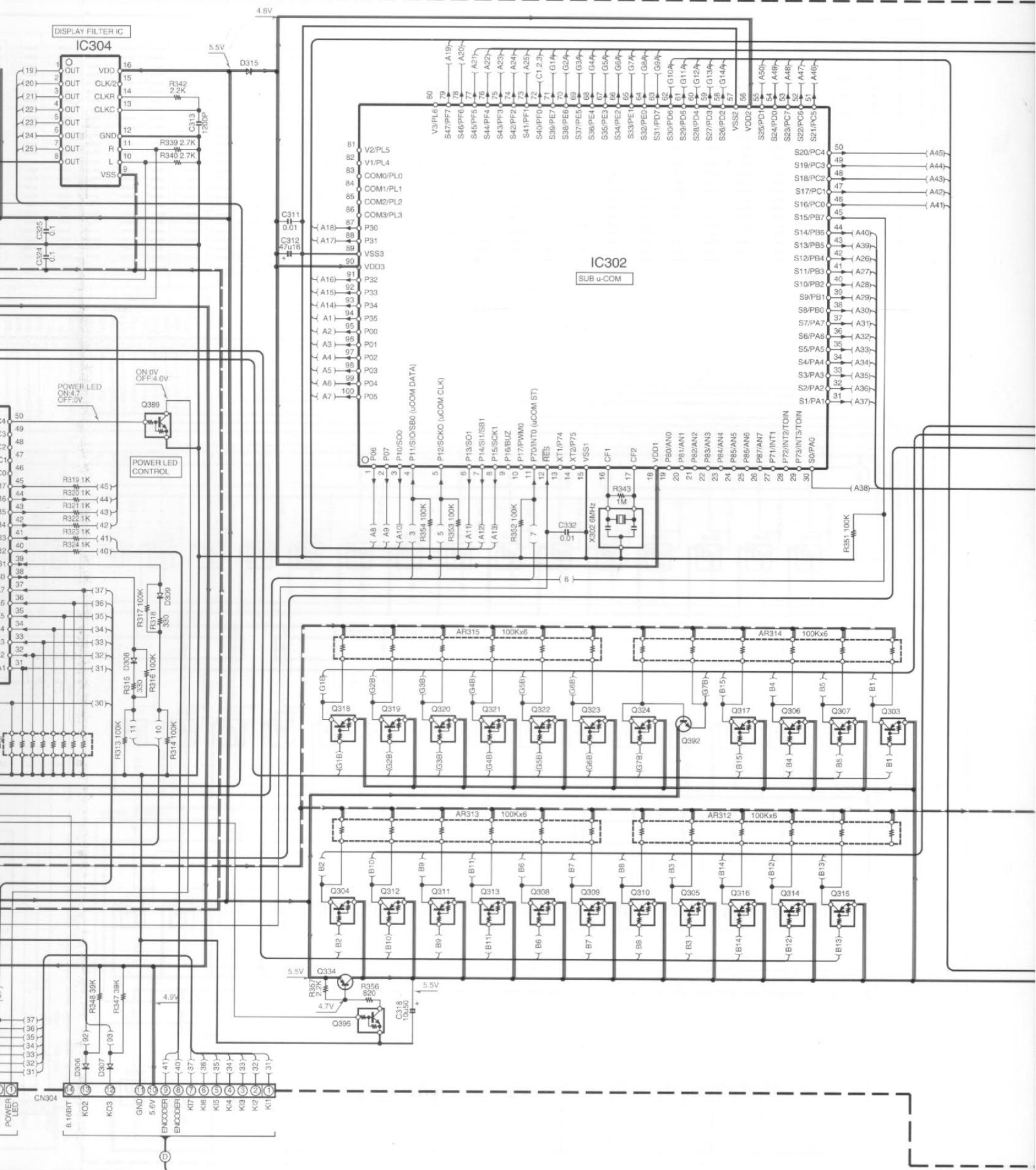
3

4

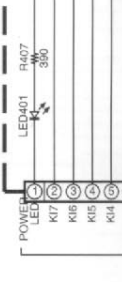
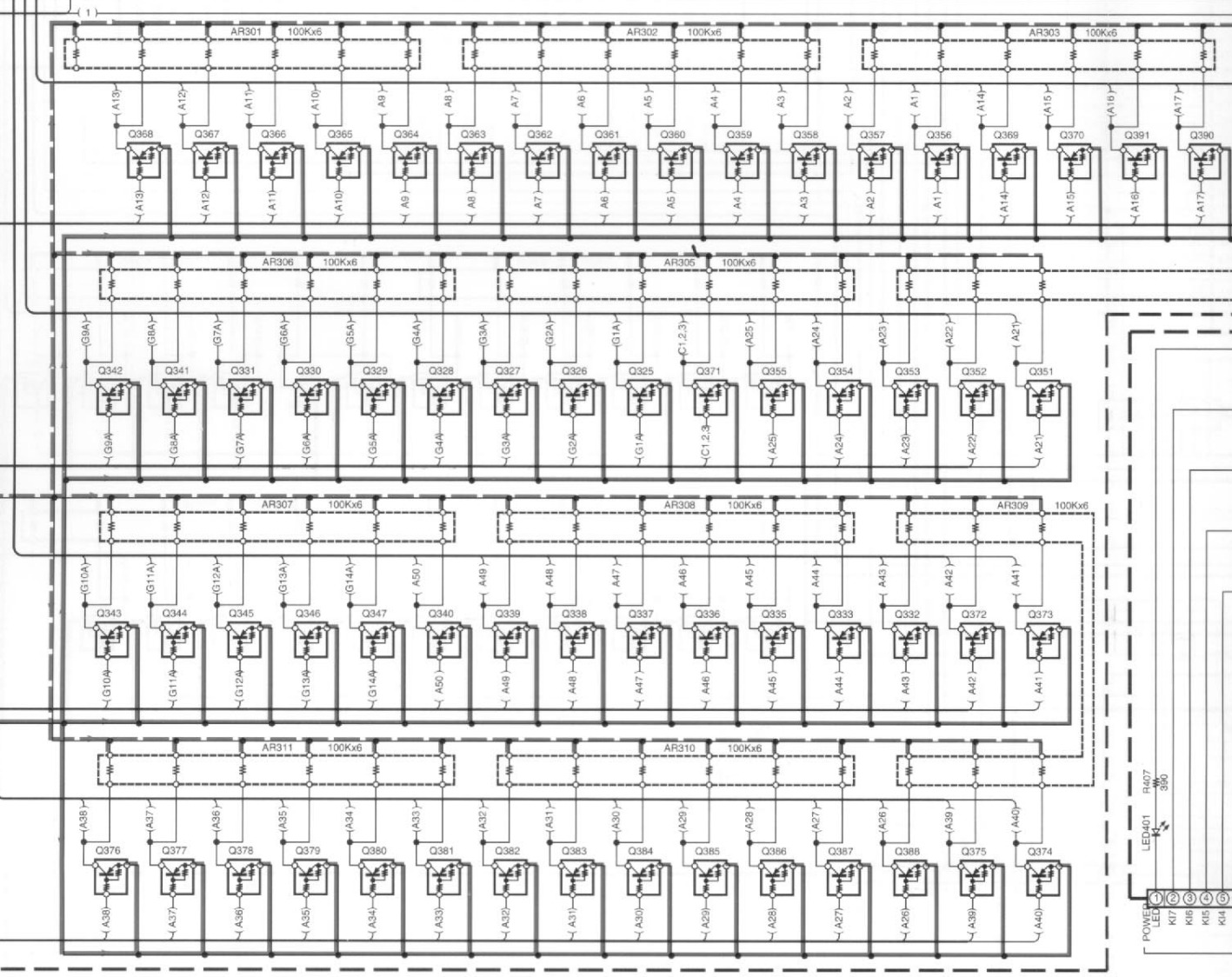
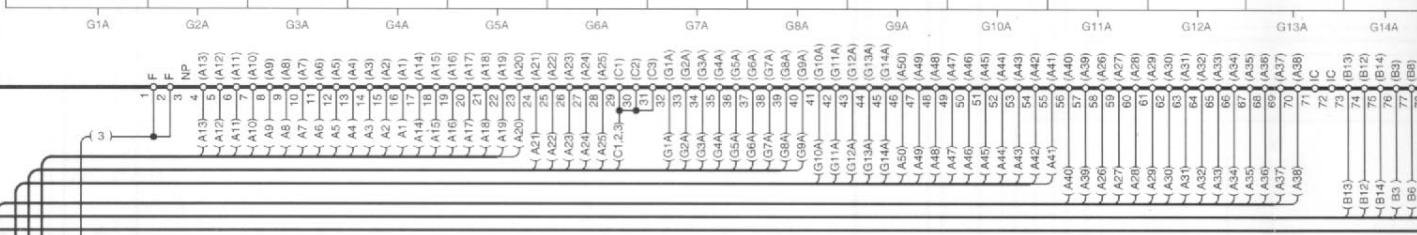
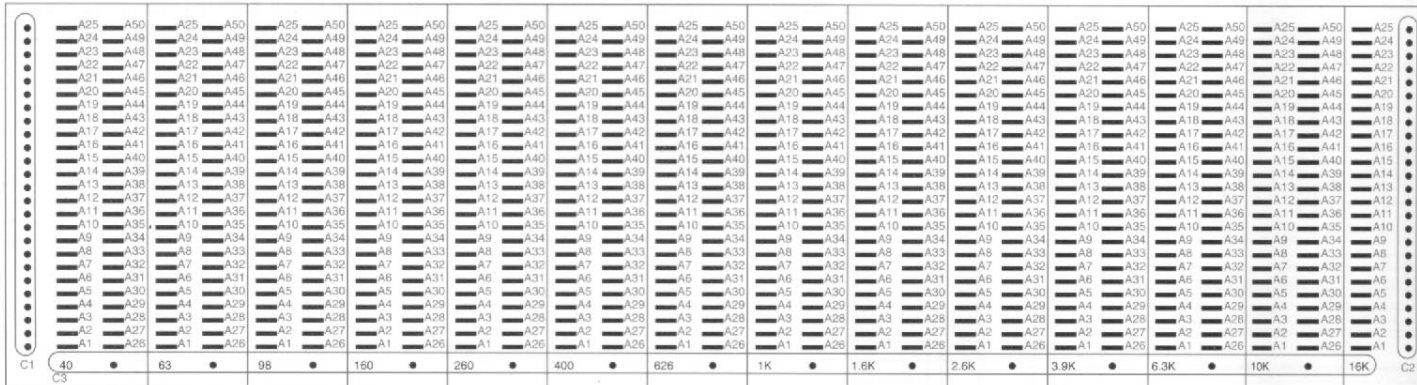
5

6

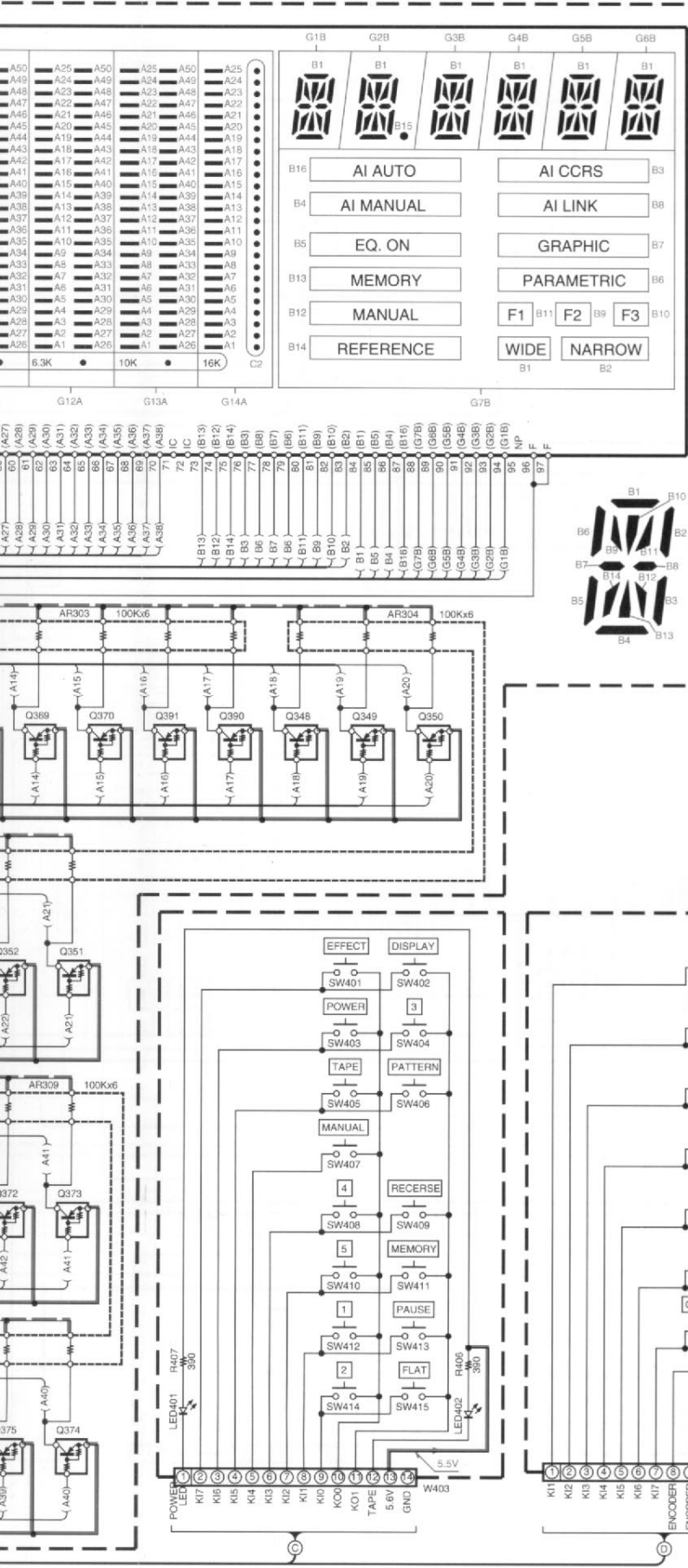
7



FLT301

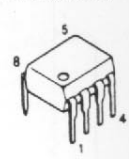




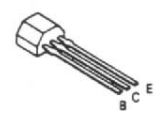


**CAUTION:** For continued safety, replace safety critical components only with manufacturer's recommended parts (refer to parts list).  $\Delta$  indicates safety critical components. For continued protection against risk of fire, replace only with same type and rating fuse(s). To reduce the risk of electric shock, leakage-current or resistance measurements shall be carried out (exposed parts are acceptably insulated from the supply circuit) before the appliance is returned to the customer.

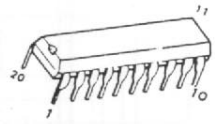
The DC voltage is an actual reading measured with a high impedance type voltmeter. The measurement value may vary depending on the measuring instruments used or on the product.

- |                  |                  |           |   |
|------------------|------------------|-----------|---|
| IC301            | : LC867224A-5D35 | NJM4558DD |  |
| IC302            | : LC867224A-5D38 |           |   |
| IC303            | : TC4051BP       |           |   |
| IC304,305        | : XR1091         |           |   |
| IC306            | : KIA7039P       |           |   |
| Q301             | : 2SC1740S       |           |   |
| Q302,389,395     | : DTC114ES       |           |   |
| Q303-333         | : DTA124ES       |           |   |
| Q334             | : KTA1271Y       |           |   |
| Q335-388,390,391 | : DTA124ES       |           |   |
| Q392             | : KTC3227Y       |           |   |
| Q393             | : KTD2058Y       |           |   |
| Q394             | : 2SA933S        |           |   |
| D301-313,315,317 | : 1SS131         |           |   |
| ZD301,302        | : MTZJ6.2B       |           |   |
| ZD303            | : MTZJ2.7B       |           |   |
| ZD304,305        | : MTZJ4.7B       |           |   |
| ZD306            | : MTZJ5.6B       |           |   |
| FLT301           | : FIP21BMW24     |           |   |

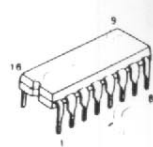
DTA124ES  
DTC114ES  
DTC124ES  
2SA933S  
2SC1740S



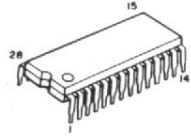
M5229P



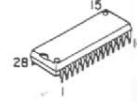
TC4051BP



NJU7305L



NJU7311AL

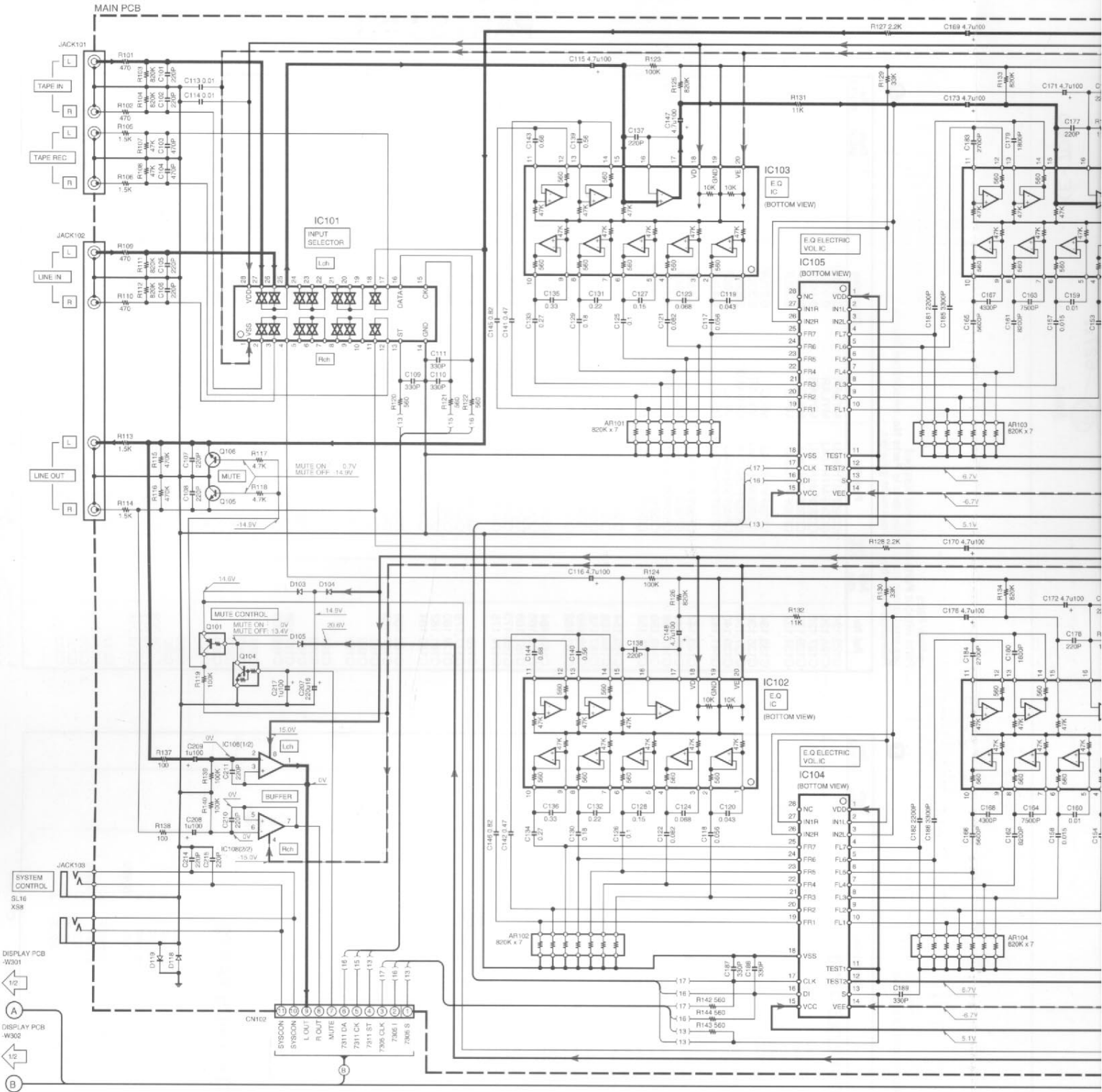


KE-7090(M) (1/2)

Y09-4560-10

**1070KE/KE-7090**

**KENWOOD**

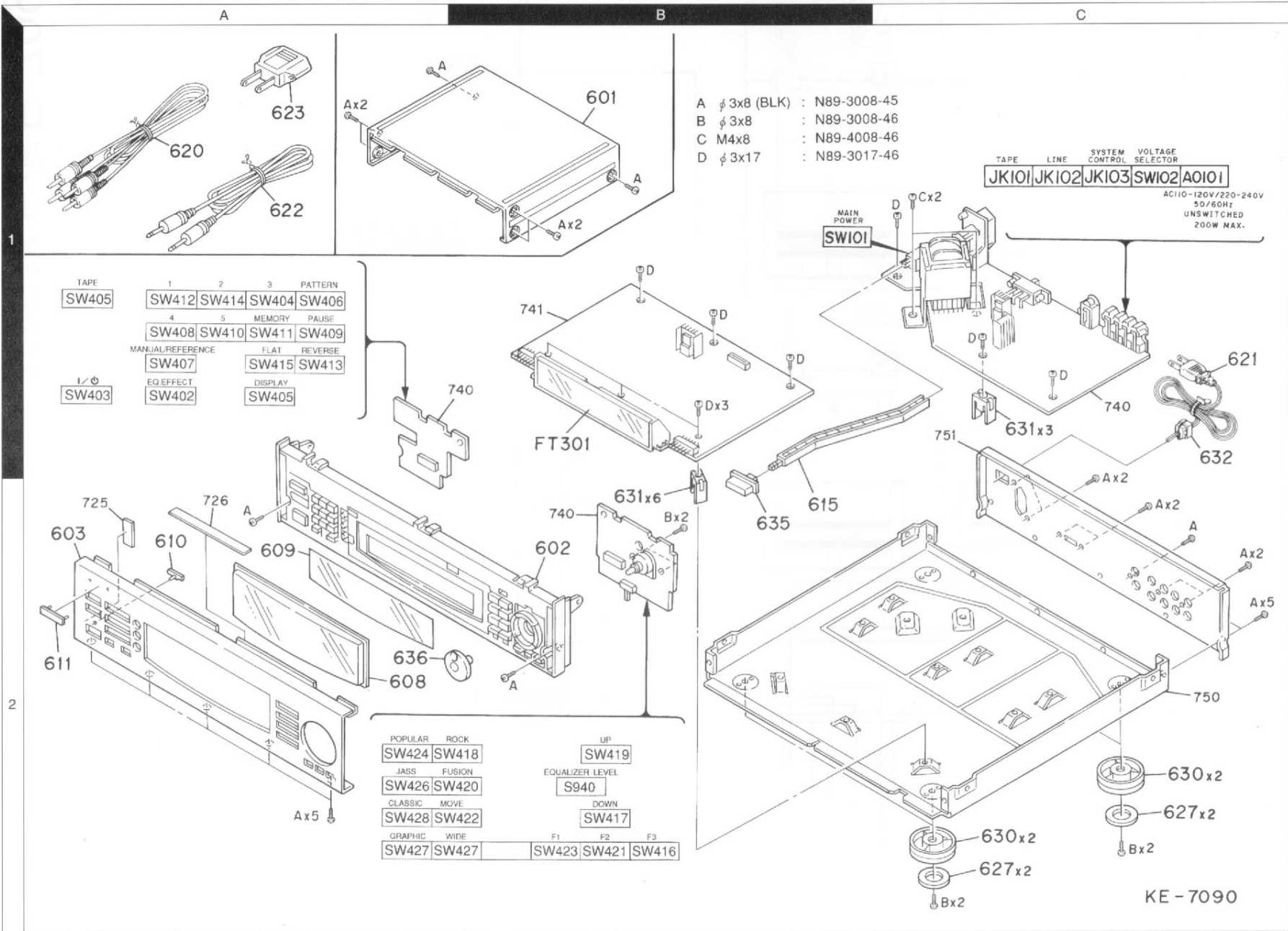


**CAUTION:** For continued safety, replace safety critical components only with manufacturer's recommended parts (refer to parts list).  $\Delta$  indicates safety critical components. For continued protection against risk of fire, replace only with same type and rating fuse(s). To reduce the risk of electric shock, leakage-current or resistance measurements shall be carried out (exposed parts are acceptably insulated from the supply circuit) before the appliance is returned to the customer.

The DC voltage is an actual reading measured with a high impedance type voltmeter. The measurement value may vary depending on the measuring instruments used or on the product.



Parts with the exploded numbers larger than 700 are not supplied.



EXPLODED VIEW (UNIT)

1070KE/KE-7090 1

# 1070KE/KE-7090

## SPECIFICATIONS

### [Audio block]

Total harmonic distortion (at 1 kHz, Flat) .....	0.005%
Frequency response .....	10 Hz ~ 70 kHz, $\pm 3$ dB
Signal to noise ratio (IHF '66) .....	108 dB
<b>Graphic equalizer characteristics</b>	
Adjustment center frequencies .....	40 Hz, 63 Hz, 98 Hz, 160 Hz, 250 Hz, 400 Hz, 625 Hz, 1 kHz, 1.5 kHz, 2.5 kHz, 3.9 kHz, 6.3 kHz, 10 kHz, 16 kHz
Equalizer characteristic variable range .....	$\pm 12$ dB
<b>Input impedance</b>	
Line .....	47 k $\Omega$
Maximum output voltage (at 1% T.H.D.) .....	7 V
<b>Output Impedance</b>	
Line .....	2.2 k $\Omega$

### [General]

#### AC outlets

For the U.S.A. and Canada

UNSWITCHED .....

1 (200W, 1.6A max.)

For other countries

UNSWITCHED .....

1 (200W max.)

Power consumption .....

18 W

Dimensions .....

W: 440 mm (17-5/16")

H: 123 mm (4-7/8")

D: 371 mm (14-5/8")

Weight (net) .....

4.2 kg (9.3 lb)

### Note :

We follow a policy of continuous advancements in development. For this reason specifications may be changed without notice.

### Note:

Component and circuitry are subject to modification to insure best operation under differing local conditions. This manual is based on Europe (E) standard, and provides information on regional circuit modification through use of alternate schematic diagrams, and information on regional component variations through use of parts list.

## KENWOOD CORPORATION

14-6, Dogenzaka 1-chome, Shibuya-ku, Tokyo, 150 Japan

### KENWOOD SERVICE CORPORATION

P.O. BOX 22745, 2201 East Dominguez St., Long Beach, CA 90801-5745, U.S.A.

### KENWOOD ELECTRONICS CANADA INC.

6070 Kestrel Road, Mississauga, Ontario, Canada L5T 1S8

### KENWOOD ELECTRONICS LATIN AMERICA S.A.

P.O. BOX 55-2791, Piso 6 plaza Chase, Cl. 47 y Aquilino de la Guardia Panama, Republic de Panama

### KENWOOD ELECTRONICS U.K. LIMITED

KENWOOD House, Dwight Road, Watford, Herts., WD1 8EB., United Kingdom

### KENWOOD ELECTRONICS BENELUX N.V.

Meachelsesteenweg 418, B-1930 Zaventem, Belgium

### KENWOOD ELECTRONICS DEUTSCHLAND GMBH

Rembr  $\ddot{u}$ ker Str. 15, 63150 Heusenstamm, Germany

### KENWOOD ELECTRONICS FRANCE S.A.

13 Boulevard Ney, 75018 Paris, France

### KENWOOD ELECTRONICS ITALIA S.p.A.

Via G. Sirtori, 7/9 20129, Milano, Italy

### KENWOOD IB $\text{I}$ CA S.A.

Bolivia, 239-08020 Barcelona, Spain

### KENWOOD ELECTRONICS AUSTRALIA PTY. LTD.

(A.C.N. 001499 074)

P.O. Box 504, 8 Figtree Drive, Australia Centre, Homebush, N.S.W. 2140, Australia

### KENWOOD & LEE ELECTRONICS, LTD.

Unit 3712-3724, Level 37, Tower 1, Metroplaza, 223 Hing Fong Road, Kwai Fong N.T., Hong Kong

### KENWOOD ELECTRONICS GULF FZE

P.O. Box 61318, Jebel Ali, Dubai, U.A.E.

### KENWOOD ELECTRONICS SINGAPORE PTE LTD.

No. 1 Genting Lane #02-02, KENWOOD Building, Singapore, 349544

### KENWOOD ELECTRONICS (MALAYSIA) SDN BHD.

#4.01 Level 4, Wisma Academy Lot 4A, Jalan 19/1 46300 Petaling Jaya Selangor Darul Ehsan Malaysia