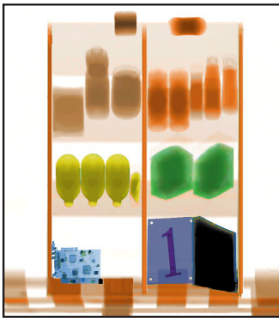


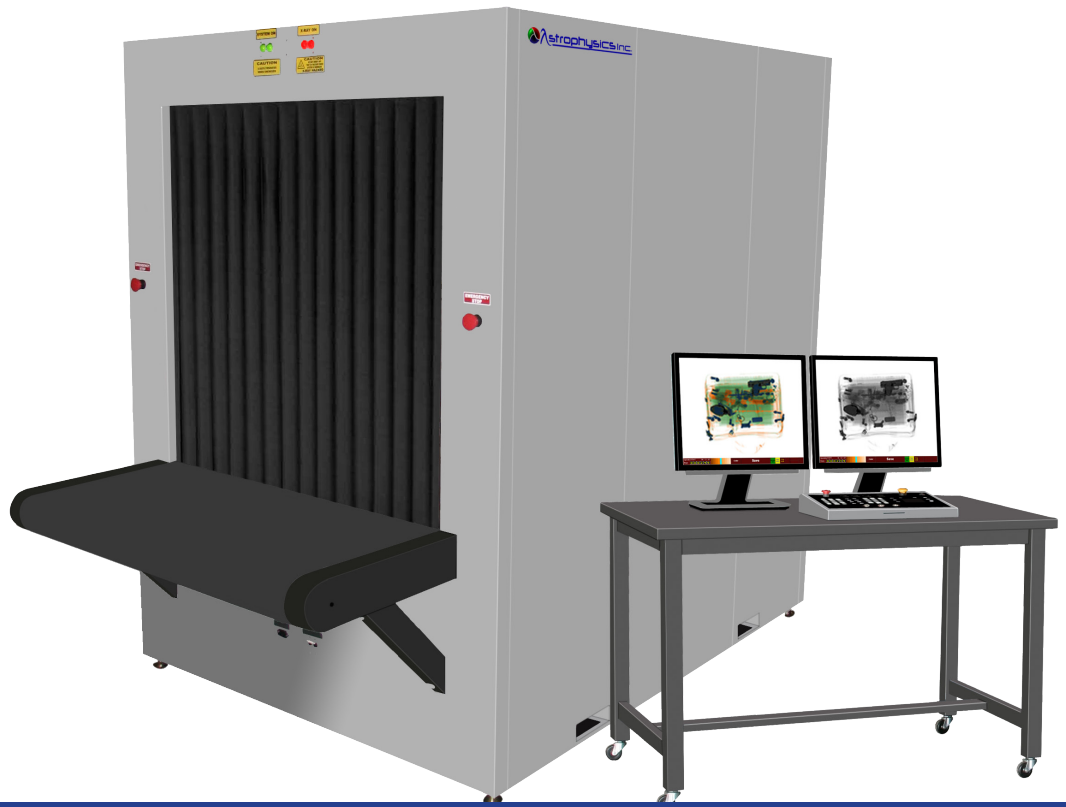
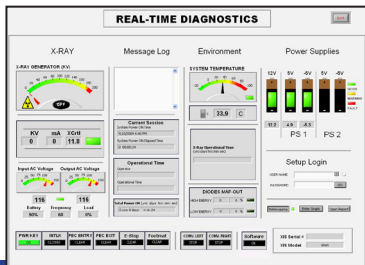
# XIS-100X

## Mid-sized High Performance System Large Baggage and Parcel Inspection

### 6 Color Imaging



### Real-Time Diagnostics



The XIS-100X is a versatile X-Ray Inspection System with a tunnel size of **1016 x 1013 mm (40" x 39.9")**. The XIS-100X is designed for screening **oversized luggage, large parcels and small cargo**.

One of the most desired systems in the XIS Series, the XIS-100X is a flexible, mid-sized system that offers **diverse screening capabilities**. The XIS-100X retains **high throughput** while providing a bigger tunnel size for larger scale object screening. Thus, the system offers **improved efficiency for medium sized screening needs**.

Ultimately, the XIS-100X is the **cost effective** screening solution for airports, customs facilities, and high security sites.

Astrophysics has the **fastest delivery times**. We offer immediate screening solutions with **unparalleled order flexibility and customization**.

All XIS Systems are equipped with **Real-Time Diagnostics**, a unique Astrophysics feature which allows users to monitor their machine health, thus greatly **increasing the system lifespan**.

An exclusive Astrophysics standard feature, **6 Color Imaging** enables operators to view screened objects in 6 colors, with each color correlating to a specific range of Atomic Z-Numbers. 6 Color Imaging enables operators to achieve **optimal material identification** and improve throughput with more effective screening technology.

Backed by a team of experts with more than **100 years of combined industry experience**, Astrophysics has the expansive knowledge you expect, all with a focus on X-Ray that assures customers the **XIS product is the industry best**.

The XIS Series features **top-of-the-line software and hardware technology** establishing Astrophysics as the **leader in innovation and quality**.

Astrophysics is headquartered in the United States, but maintains multiple field offices worldwide for **localized support**.

For your convenience, we also retain a dedicated Sales and Service team committed to providing a **personalized and timely response 24/7**.

## General Specifications

- Tunnel Size: 1016 mm x 1013 mm  
(W x H) 40.0" x 39.9"
- Dimensions: 2775 mm x 1372 mm x 1919 mm  
(L x W x H) 109.3" x 54.0" x 75.6"
- Shipping Dimensions: 2972 mm x 1499 mm x 2235 mm  
(L x W x H) 117.0" x 58.0" x 88.0"
- Net Weight<sup>2</sup>: 982 kgs (2160 lbs)
- Shipping Weight<sup>2</sup>: 1299 kgs (2858 lbs)
- Conveyor Speed: 0.23 m/s (44 ft/min) In Both Directions
- Conveyor Height: 715 mm (28.14") from floor
- Conveyor Capacity: 200 kgs (440 lbs) Evenly Distributed Load
- Construction: Custom Steel Frame / Panels

## Technical

- Sensitivity: 40 AWG Typical, 38 AWG Standard
- Spatial Resolution: 1.0 mm Horizontal, 1.3 mm Vertical
- Penetration<sup>1</sup>: 39 mm Steel Typical, 37 mm Standard
- Contrast Sensitivity: 24 Visible Levels, 4096 Gray Level

## X-Ray Generator

- Voltage: 180 kV, Operating at 165 kV
- Tube Current: 1.2 mA
- Cooling: Sealed Di-Electric Oil Bath with Forced Air
- Duty Cycle: 100%, No Warm-Up Procedure Required
- Beam Direction: Diagonally Upward
- Detector: 2304 Channels in an L-Shaped Array

## Computer

- Processor: Intel Core2 Quad, 2.66 GHz, 1333 MHz
- Memory: 2 GB RAM at 1333 MHz
- Storage: 250 GB HDD
- Video Card: 256 MB Video Card, Dual Digital Display
- Platform: Windows XP Pro
- Backup: Uninterrupted Power Supply (20 min)

## Video

- Display Type: Dual 19" LCD Color Monitors
- Display Resolution: 1280 x 1024; 24 bit/pixel Color

## Environmental

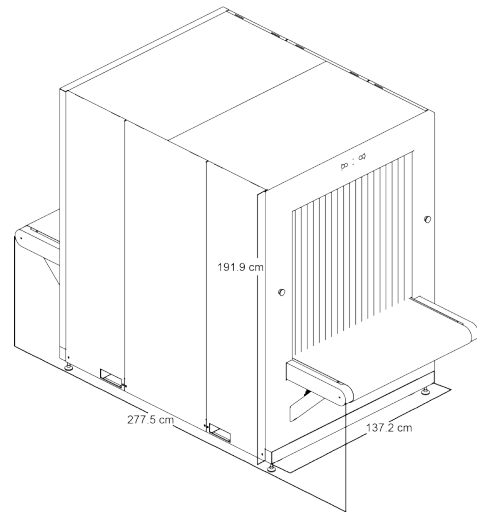
- Operating Temperature: 0°C - 40°C \ 32°F - 104°F
- Storage Temperature: -20°C - 60°C \ -4°F - 140°F
- Humidity: Up to 95% Non-Condensing

## Electrical

- Power Requirements: 110VAC: 96-132 VAC, 60 HZ. 15 Amp Max  
220VAC: 183-253 VAC, 50 Hz. 10 Amp Max

## Health and Safety

- Compliant with USFDA, Center for Devices and Radiation Health Standards for Cabinet X-Ray Systems (21-CFR 1020.40).
- Typical Radiation leakage is less than 0.1 mR/hr (Leakage less than 0.5 mR/hr permitted by the Federal Standard).



## Standard Features

- 6 Color Imaging
- 9 Quadrant Zoom
- Atomic Z-Number Measurement
- Auto Image Archiving (50,000 Images)
- Baggage Counter
- Color and Black / White Imaging
- Continuous Scanning
- Continuous Zoom 2x to 32x
- Density Alert
- Edge-Enhancement Imaging
- Geometric Image Distortion Correction
- High Penetration Function
- Heavy Duty Roller Casters
- Image Annotation
- Image Review (100 Images)
- Manual Archive
- Material Discrimination
- Multi-Tier Accessibility
- Network Ready
- Organic/Inorganic Imaging
- Operator Training Program
- Picture Perfect
- Print Image Capable
- Pseudo Color
- Real-Time Image Manipulation
- Real-Time Self Diagnostics
- Reverse Monochrome
- Vertical Zoom Panning

## Optional Features<sup>3</sup>

- 25" LCD Monitors
- Advance Auto Image Archiving (100,000 Images)
- ASTM 10 Stepwedge/ASTM F0792-01E2 Test Case
- Custom Paint
- Entry / Exit Roller Tables, 0.5 m increment
- Footmat
- Local Language Support (Arabic, Chinese, French, Spanish, and more)
- Radiation Meter
- Remote Workstation Extension
- Screener Assist Threat Detection Software
- Supervisor Workstation
- Suspect Search Station
- Threat Image Projection Software
- Tropical Kit (Up to 50°C / 122°F Operation)

Office: Jl. Radin Inten II No. 62 Duren Sawit, Jakarta 13440 - Indonesia  
 Workshop: Jl. Pahlawan Revolusi No. 22B, Jakarta 13430 - Indonesia  
 Phone: 021-8690 6777 (Hunting)

Mobile: +62 816 1740 8925  
 Fax: 021-8690 6771