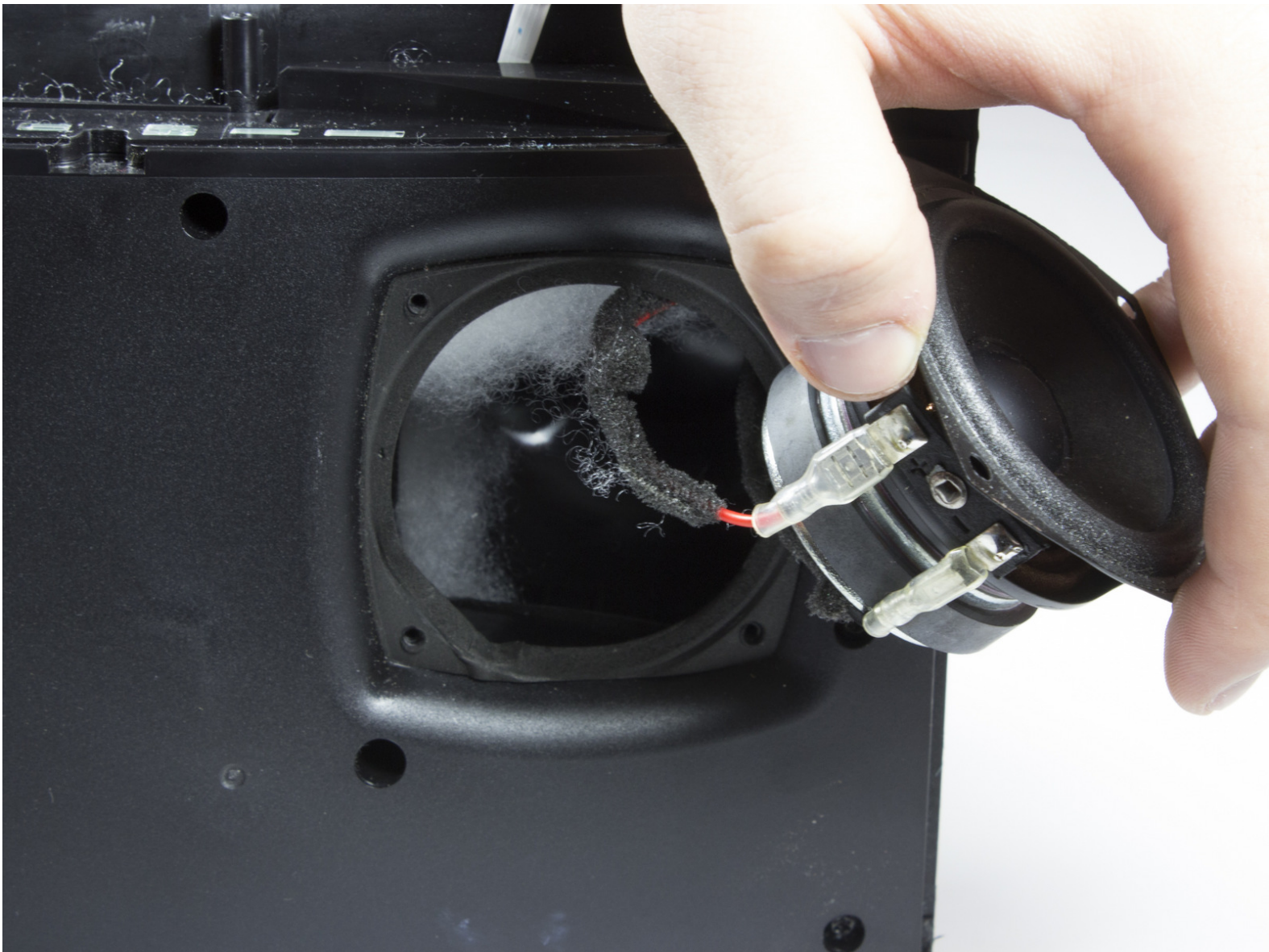




# Monster Soundstage S2 Front Speakers Replacement

This guide provides directions for the replacement of the front speakers for the Soundstage S2. These speakers are 8 ohm, 15 watt drivers (left and right).

Written By: Josue A Melgar



## INTRODUCTION

This guide can be used to replace the front speakers of Monster Soundstage S2 speaker.

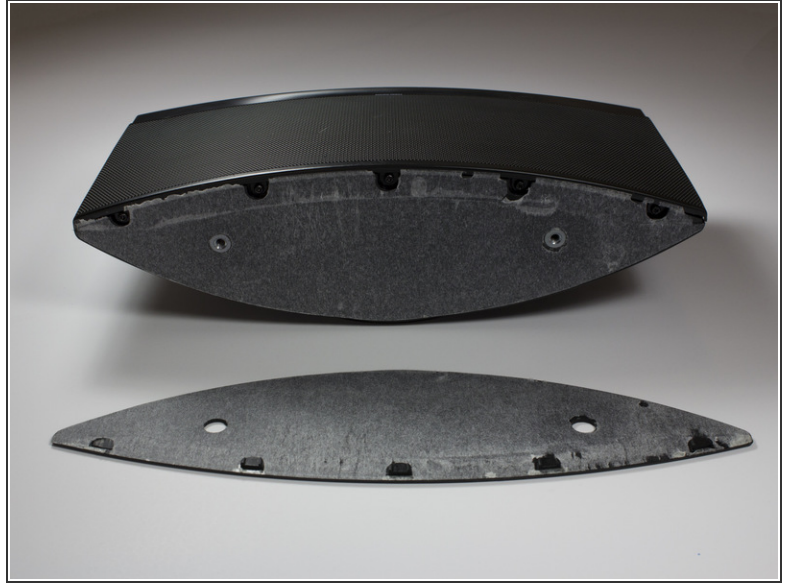
---



### TOOLS:

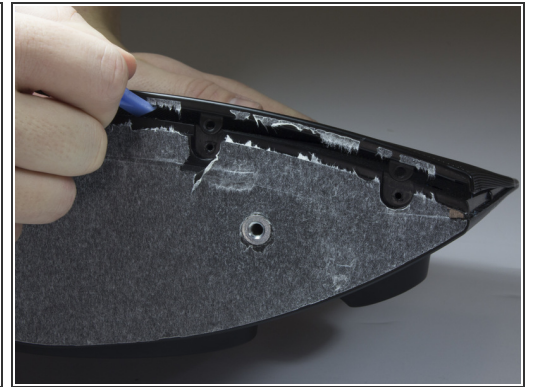
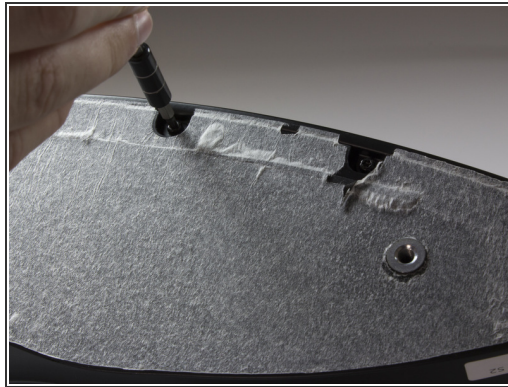
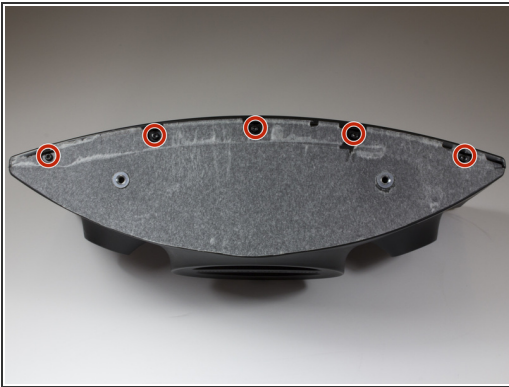
- [Spudger](#) (1)
  - [iFixit Opening Tools](#) (1)
  - [64 Bit Driver Kit](#) (1)
  - [Essential Electronics Toolkit](#) (1)
-

## Step 1 — Speaker Grille




- Use a spudger or your fingers to pry off and remove the rubber pad on the bottom of the speaker.

## Step 2



- Remove the five 10mm screws with a TR 10 screwdriver.
- Use a spudger to break the remaining adhesive holding the grille to the speaker body.

 Be sure you don't bend the grille; it is not free from the speaker yet.



### Step 3



- Flip speaker around and use a plastic opening tool to remove the top panel from the speaker.

### Step 4



- Use a plastic opening tool to remove the foam and uncover four more screws.
- Use a TR 10 screwdriver to remove the five 10mm screws on the top of the speaker.

## Step 5



- Carefully remove the top cover.

⚠ Be careful not to tear or stress the cable that provides power to the power LED.

## Step 6



- Use a TR 10 screwdriver to remove two of the 10mm screws that secure the speaker grille.

⚠ Do not attempt to remove the grille just yet.



## Step 7



- With the top panel removed, use a spudger to remove the display panel.
- ⚠ The clips on the display panel are quite fragile. Pry up both edges of the display before attempting removal.
- Use a TR 10 screwdriver to remove the four final 10mm screws securing the speaker grille.

## Step 8



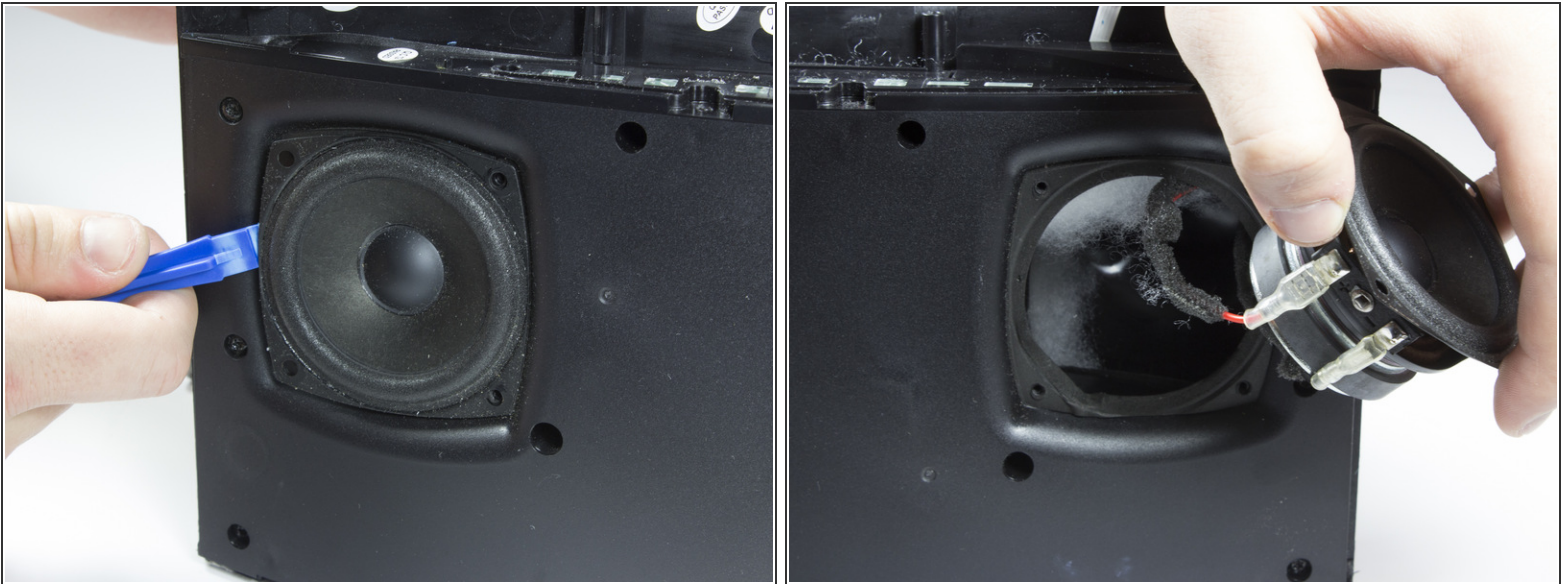
- Remove the front speaker grille.

## Step 9 — Front Speakers



- After removing grille, you will see the speakers.
- Remove the eight 10mm screws that surround the speakers. There will be four around each speaker.

## Step 10



- Carefully lift each speaker from the housing. It may be necessary to break a light adhesive seal.
- ⚠ Be aware of the two wires that are connected to each speaker.
- Set each speaker beside the main housing.



## Step 11



- Carefully but firmly unplug the two wires from each driver.
- The front speakers can now be removed.

To reassemble your device, follow these instructions in reverse order.

This document was last generated on 2017-06-17 08:41:59 AM.