

Antenna specification

Model : X5i TWS

Prepared by :

Date : 2023-03-13

directory

- * 1. Overview of antenna parameters
- * 2. Antenna appearance and dimensions

- * 3. Antenna parameter details

1. Overview of antenna parameters

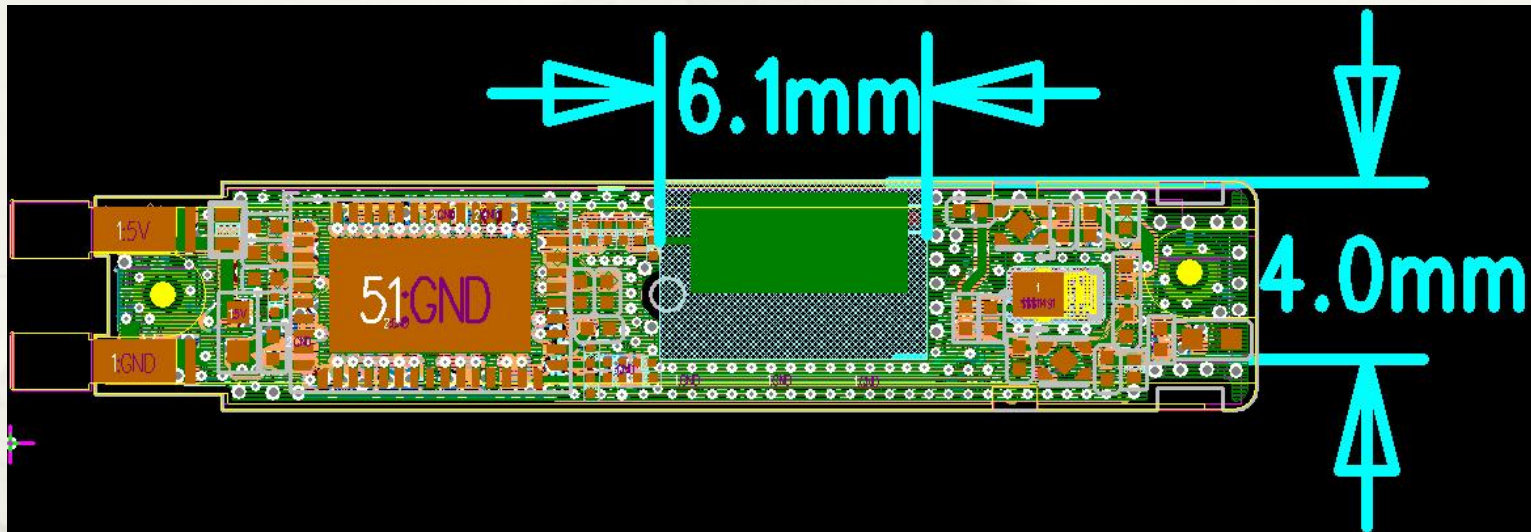
R

Frequency	2402~2480MHZ
Effi AVG	39.83%
PK Gain	2.01dBi
SWR	<2
Antenna Type	On board ANT-loop
Antenna polarization	Linear polarization
PART NO	A2
Antenna size	L6.1*W4mm

L

Frequency	2402~2480MHZ
Effi AVG	37.37%
PK Gain	1.21dBi
SWR	<2
Antenna Type	On board ANT-loop
Antenna polarization	Linear polarization
PART NO	A2
Antenna size	L6.1*W4mm

2. Antenna appearance and dimensions



Antenna right and left earphones share PCB

Antenna NO. : A2

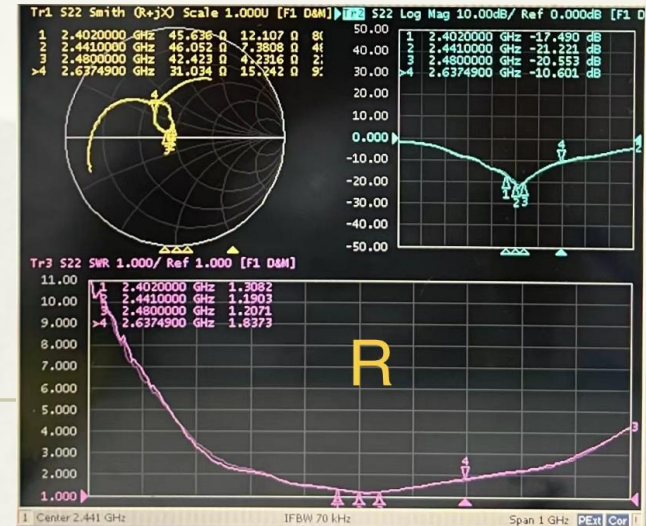
Antenna size: L6.1*W4mm

3. Antenna parameter details

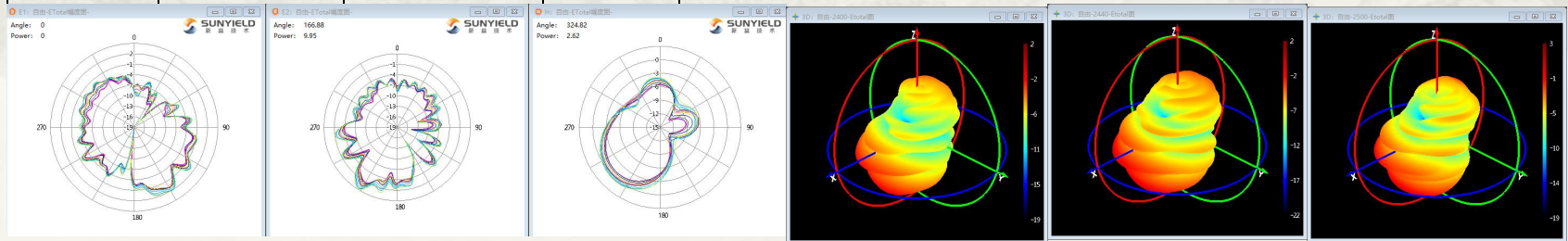
R-Antenna efficiency

FS			
Frequency (MHz)	efficiency(%)	efficiency(dB)	gain(dBi)
2400	33.14	-4.8	0.96
2410	34.68	-4.6	0.99
2420	36.01	-4.44	1.21
2430	37.37	-4.27	1.48
2440	38.84	-4.11	1.37
2450	40.24	-3.95	1.86
2460	41.57	-3.81	1.94
2470	42.92	-3.67	1.93
2480	43.95	-3.57	2.01
2490	44.53	-3.51	1.93
2500	44.91	-3.48	1.99
AVG	39.83	-4.02	1.61

S11 Parameters



Antenna pattern:

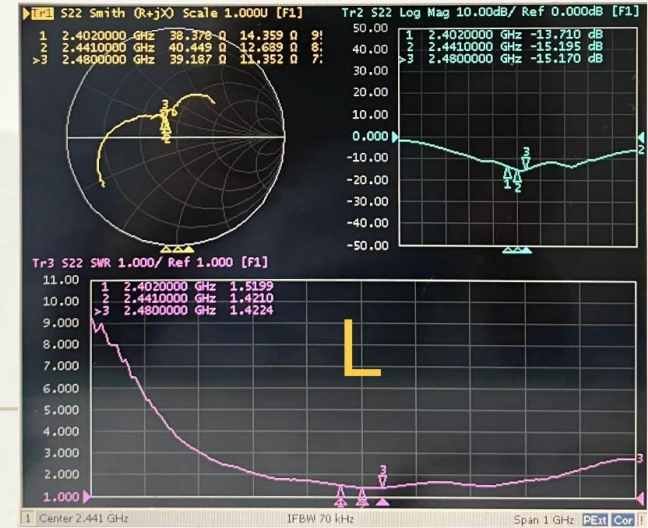


4. Antenna parameter details

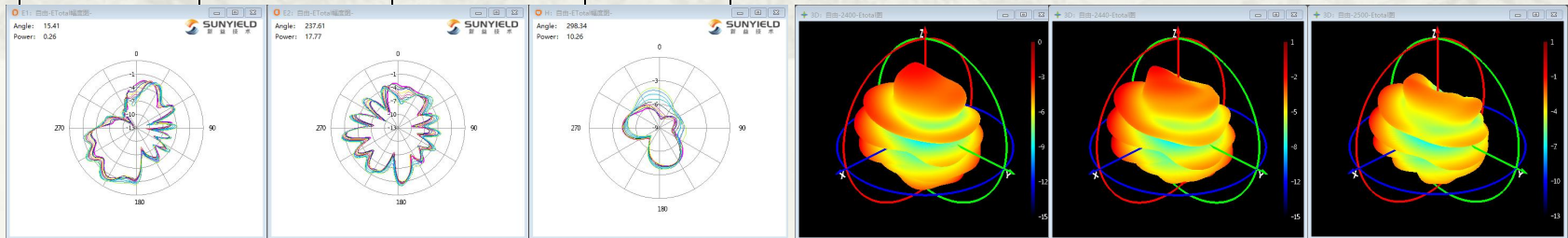
L-Antenna efficiency

FS			
Frequency (MHz)	effeciency(%)	effeciency(dB)	gain(dBi)
2400	34.71	-4.6	-0.06
2410	35.17	-4.54	0.01
2420	35.67	-4.48	0.12
2430	36.11	-4.42	0.25
2440	36.57	-4.37	0.38
2450	37.11	-4.3	0.57
2460	37.78	-4.23	0.73
2470	38.49	-4.15	0.87
2480	39.25	-4.06	1.21
2490	39.86	-3.99	1.16
2500	40.33	-3.94	1.13
AVG	37.37	-4.28	0.52

S11 Parameters



Antenna pattern:





The End