

Owner's Manual

USB 3.1 Gen 2 (10 Gbps) Type-C to NVMe PCIe M.2 SSD M-Key Enclosure

Model: U457-1M2-NVMEG2

Este guía esta disponible en español en la página de Tripp Lite:
www.tripplite.com/support

Ce guide est disponible en français sur le site Web de Tripp Lite :
www.tripplite.com/support

Русскоязычная версия настоящего краткого руководства
представлена на веб-сайте компании Tripp Lite по адресу:
www.tripplite.com/support

WARRANTY REGISTRATION

Register your product today and be automatically entered to
win an ISOBAR surge protector in our monthly drawing!

tripplite.com/warranty



1111 W. 35th Street, Chicago, IL 60609 USA
tripplite.com/support

Copyright © 2019 Tripp Lite. All rights reserved.

Product Features

- Read, write or transfer files to and from your computer by adding the speed of an M.2 NVMe SSD
- Supports M.2 drive sizes of 2230, 2242, 2260, 2280
- Supports USB 3.1 Gen 2 data transfer rates up to 10 Gbps and is backwards compatible with USB 3.0, 2.0 and 1.1.
- UASP compatible for up to 70% faster read and 40% faster write performance
- Slim aluminum enclosure is durable and perfect for travel
- Plug-and-play design—no software, drivers or external power required

Package Includes

- U457-1M2-NVMEG2 USB-C to M.2 Enclosure
- USB 3.1 Gen 2 Type-C Cable, 2 ft. (0.6 m)
- Mini Screwdriver
- Mounting Hardware
- Owner's Manual

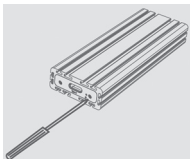
Optional Accessories

- U420-003-G2 USB 3.1 Gen 2 Type-C (10 Gbps) to Type-C Cable, 3 ft. (0.9 m)
- U428-003-G2 USB 3.1 Gen 2 Type-C (10 Gbps) to USB-A Cable, 3 ft. (0.9 m)

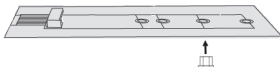
Standard Installation

Notes:

- *HDD/SSD drives are sensitive to static electricity and must be handled properly to prevent the risk of data loss. Always handle your HDD/SSD drive with caution by wearing an anti-static strap (such as Tripp Lite's P999-000) when transporting it or by touching a grounded metal surface to discharge yourself of static electricity prior to picking up the drive.*
 - *When disconnecting the drive, make sure to go through the proper disconnection steps of your operating system. Removing the drive with proper disconnection can result in data loss or corruption.*
1. Using the included mini-screwdriver, remove the two screws located on either side of the USB-C port.



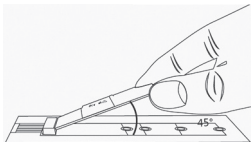
2. Remove the USB-C cover plate and slide out the PCBA board.
3. Place your SSD next to the M.2 NVMe M-Key connector, matching up the mounting holes. Position the included nut underneath the mounting hole that matches the length of your SSD.



3

Standard Installation

4. Connect your M.2 NVMe SSD M-Key drive at a 45° angle to minimize stress on the connector.



Note: This product only supports PCIe M.2 NVMe M-Key SSD and does NOT support B-Key/M+B Key SATA SSD or M-Key M.2 PCIe-AHCI SSD.



5. Holding down the SSD toward the mounting hole with the inserted nut, secure the SSD to the PCBA board by screwing the mounting screw to the nut.
6. Slide the PCBA board back into the metal casing and replace the two cover-plate screws removed in Step 1.
7. Connect the included USB 3.1 Gen 2 cable between the USB-C port on the enclosure unit and the USB-A port on your computer.

Standard Installation

8. Your enclosure is now ready to use*. The blue LED will blink to indicate reading, writing and transferring of data.

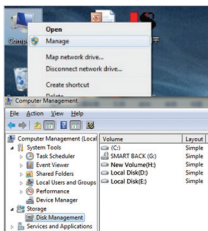
If your SSD has not yet been formatted, you will first need to format it using your computer's Disk Management Utility in order to copy and access files. Please refer to **Hard Disk Formatting instructions for more information.*

Hard Disk Formatting

Note: Partitioned SSDs will be recognized as “New Volume” and ready to use immediately.

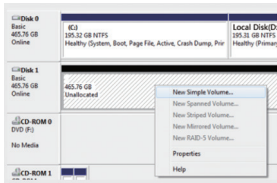
1. In the Computer Management window, right click on “Disk Management” and select “Manage”.

Note: Administrative credentials are required to change or edit settings.



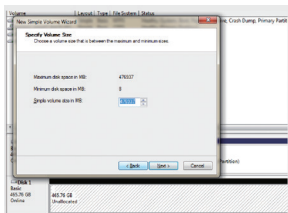
Standard Installation

2. Right click on “Disk 1”, then click “New Simple Volume”.



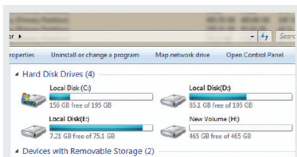
3. Choose the size of your partition, then click “Next” to finish.

Note: The partition size cannot exceed the maximum disk space (in MB). It is recommended that the simple volume size in MB matches that of the maximum disk space in MB.



Standard Installation

4. Locate your new hard disk in the My Computer window.



Warranty and Product Registration

3-YEAR LIMITED WARRANTY

Tripp Lite warrants its products to be free from defects in materials and workmanship for a period of Three (3) years from the date of initial purchase. Tripp Lite's obligation under this warranty is limited to repairing or replacing (at its sole option) any such defective products. To obtain service under this warranty, you must obtain a Returned Material Authorization (RMA) number from Tripp Lite or an authorized Tripp Lite service center. Products must be returned to Tripp Lite or an authorized Tripp Lite service center with transportation charges prepaid and must be accompanied by a brief description of the problem encountered and proof of date and place of purchase. This warranty does not apply to equipment, which has been damaged by accident, negligence or misapplication or has been altered or modified in any way.

EXCEPT AS PROVIDED HEREIN, Tripp Lite MAKES NO WARRANTIES, EXPRESS OR IMPLIED, INCLUDING WARRANTIES OF MERCHANTABILITY AND FITNESS FOR A PARTICULAR PURPOSE. Some states do not permit limitation or exclusion of implied warranties; therefore, the aforesaid limitation(s) or exclusion(s) may not apply to the purchaser.

EXCEPT AS PROVIDED ABOVE, IN NO EVENT WILL Tripp Lite BE LIABLE FOR DIRECT, INDIRECT, SPECIAL, INCIDENTAL OR CONSEQUENTIAL DAMAGES ARISING OUT OF THE USE OF THIS PRODUCT, EVEN IF ADVISED OF THE POSSIBILITY OF SUCH DAMAGE. Specifically, Tripp Lite is not liable for any costs, such as lost profits or revenue, loss of equipment, loss of use of equipment, loss of software, loss of data, costs of substitutes, claims by third parties, or otherwise.

PRODUCT REGISTRATION

Visit tripplite.com/warranty today to register your new Tripp Lite product. You'll be automatically entered into a drawing for a chance to win a FREE Tripp Lite product!*

*No purchase necessary. Void where prohibited. Some restrictions apply. See website for details.

Regulatory Compliance Identification Numbers

For the purpose of regulatory compliance certifications and identification, your Tripp Lite product has been assigned a unique series number. The series number can be found on the product nameplate label, along with all required approval markings and information. When requesting compliance information for this product, always refer to the series number. The series number should not be confused with the marketing name or model number of the product.

WEEE Compliance Information for Tripp Lite Customers and Recyclers (European Union)

Under the Waste Electrical and Electronic Equipment (WEEE) Directive and implementing regulations, when customers buy new electrical and electronic equipment from Tripp Lite they are entitled to:

- Send old equipment for recycling on a one-for-one, like-for-like basis (this varies depending on the country)
- Send the new equipment back for recycling when this ultimately becomes waste

Tripp Lite has a policy of continuous improvement. Specifications are subject to change without notice. Photos and illustrations may differ slightly from actual products.



1111 W. 35th Street,
Chicago, IL 60609 USA
tripplite.com/support