



Product End-of-Life Disassembly Instructions

Product Category: Notebooks and Tablet PCs

Marketing Name / Model

[List multiple models if applicable.]

HP EliteBook 1050 G1 Notebook PC

Purpose: The document is intended for use by end-of-life recyclers or treatment facilities. It provides the basic instructions for the disassembly of HP products to remove components and materials requiring selective treatment, as defined by EU directive 2002/96/EC, Waste Electrical and Electronic Equipment (WEEE).

1.0 Items Requiring Selective Treatment

1.1 Items listed below are classified as requiring selective treatment.

1.2 Enter the quantity of items contained within the product which require selective treatment in the right column, as applicable.

Item Description	Notes	Quantity of items included in product
Printed Circuit Boards (PCB) or Printed Circuit Assemblies (PCA)	With a surface greater than 10 sq cm PCA	5
Batteries	All types including standard alkaline and lithium coin or button style batteries Battery pack;RTC	2
Mercury-containing components	For example, mercury in lamps, display backlights, scanner lamps, switches, batteries NA	0
Liquid Crystal Displays (LCD) with a surface greater than 100 sq cm	Includes background illuminated displays with gas discharge lamps LED	1
Cathode Ray Tubes (CRT)	N/A	0
Capacitors / condensers (Containing PCB/PCT)	N/A	0
Electrolytic Capacitors / Condensers measuring greater than 2.5 cm in diameter or height	N//A	0
External electrical cables and cords		1
Gas Discharge Lamps	N/A	0
Plastics containing Brominated Flame Retardants weighing > 25 grams (not including PCBs or PCAs already listed as a separate item above)	N/A	0
Components and parts containing toner and ink, including liquids, semi-liquids (gel/paste) and toner	Include the cartridges, print heads, tubes, vent chambers, and service stations. N/A	0
Components and waste containing asbestos	N/A	0
Components, parts and materials containing refractory ceramic fibers	N/A	0

Components, parts and materials containing radioactive substances	N/A	0
---	-----	---

2.0 Tools Required

List the type and size of the tools that would typically be used to disassemble the product to a point where components and materials requiring selective treatment can be removed.

Tool Description	Tool Size (if applicable)
Description #1 Phillips T8 screwdriver for	#T8 2.0~2.5 kg-cm
Description #2 Phillips # 0 screwdriver	#0 2.0~2.5 kg-cm
Description #3 Phillips #1 screwdriver	#1 2.0~2.5 kg-cm

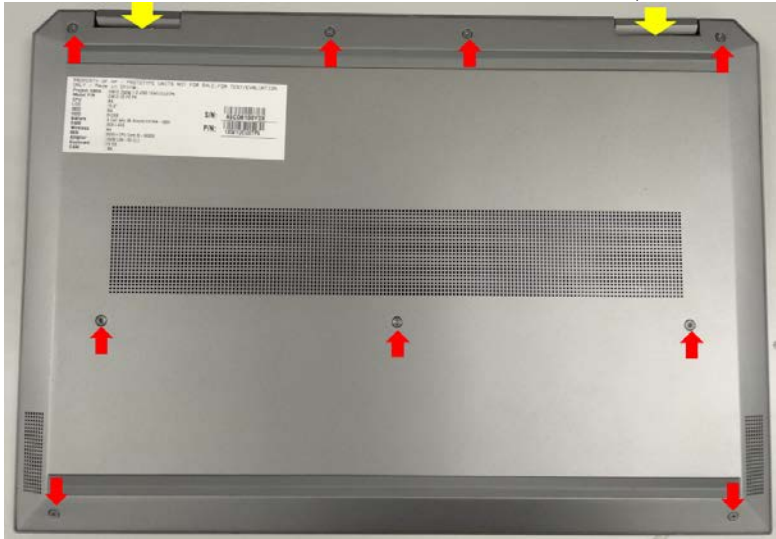
3.0 Product Disassembly Process

3.1 List the basic steps that should typically be followed to remove components and materials requiring selective treatment:

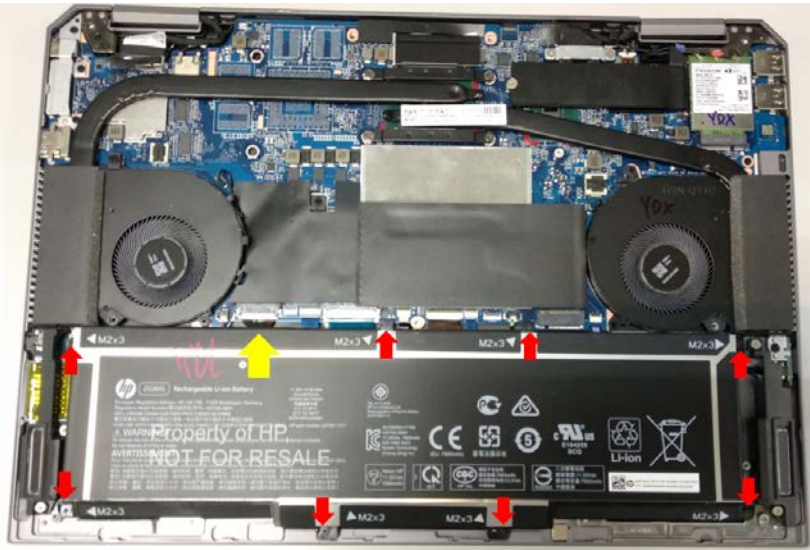
1. Use tool #1 Release base cover T8 screw 9PCS, and from hinge side release base cover
2. Use tool #2 Release battery pack screw 8PCS and release Battery Conn.
3. Use tool #3 Release main board screw 12PCS
4. Release below cable Speaker cable NFC cable, KB cable, TP cable ,HDD cable ,Power button cable , CCD cable, LCD cable ,WWan antenna cable, Wlan cable
5. release Main board
6. release hinge screw and remove hinge up
- 7.
- 8.

3.2 Optional Graphic. If the disassembly process is complex, insert a graphic illustration below to identify the items contained in the product that require selective treatment (with descriptions and arrows identifying locations).

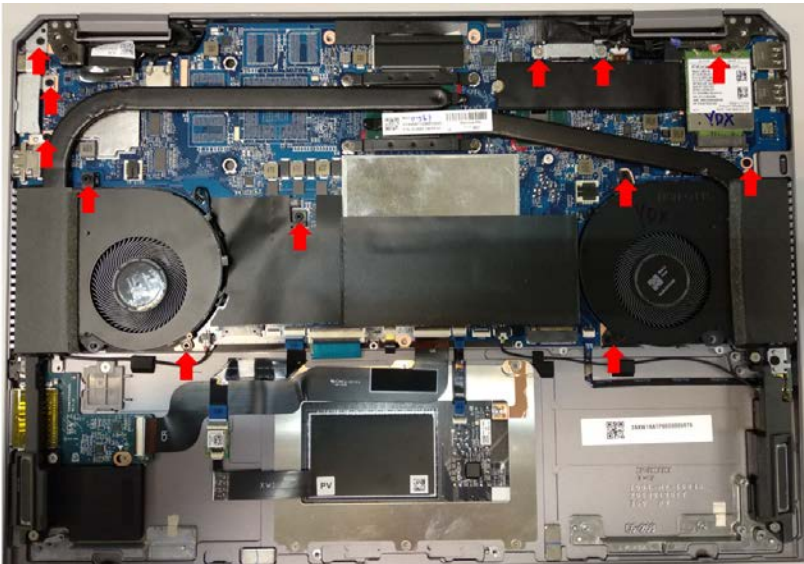
3.21 Use tool #1 Release base cover T8 screw 9PCS, and from hinge side release base cover



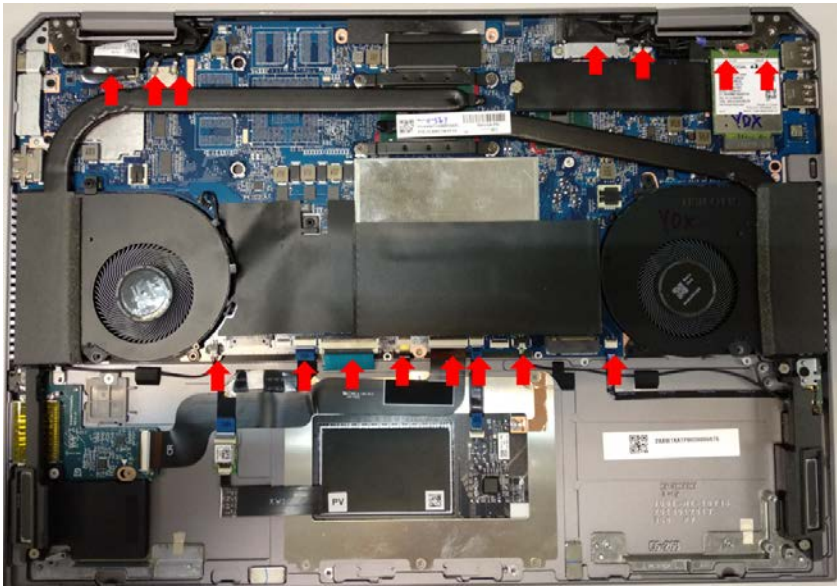
3.22 Use tool #2 Release battery pack screw 8PCS and release Battery Conn.



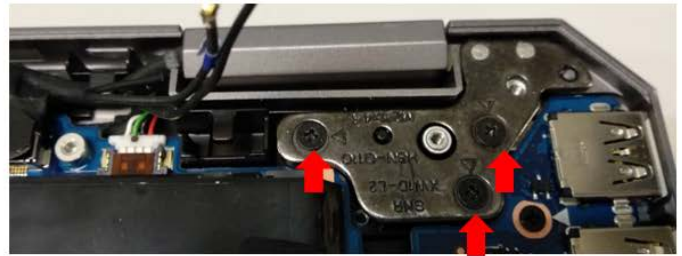
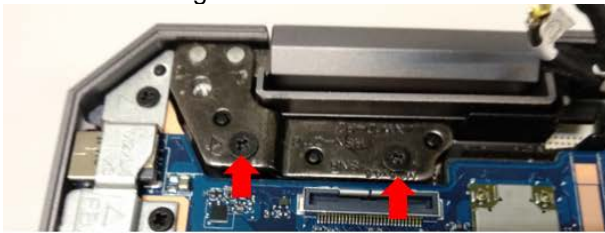
3.23 Use tool #3 Release main board screw 12PCS



3.24 Release below cable Speaker cable NFC cable,KB cable,TP cable ,HDD cable ,Power button cable ,CCD cable,LCD cable ,WWan antenna cable,Wlan cable .final step release main board



3.25 release hinge screw



3.26 release hinge up

