

Quick Installation Guide

Range Extender

Setup with videos

Scan the QR code, or visit <https://www.tp-link.com/support/setup-video/#range-extenders> and search for the setup video of your model.

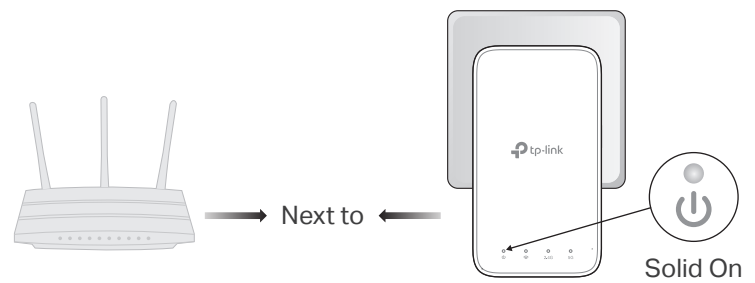


* Images may differ from your actual product.

1 Power On

Plug the extender into a power outlet **next to** your router. Wait until its Power LED turns solid on.

Note: For safety, only plug the extender in the direction as shown below.



2 Set Up

Via the Tether App

1. Get the up-to-date Tether app from the Apple App Store or Google Play, or simply scan the QR code.



OR

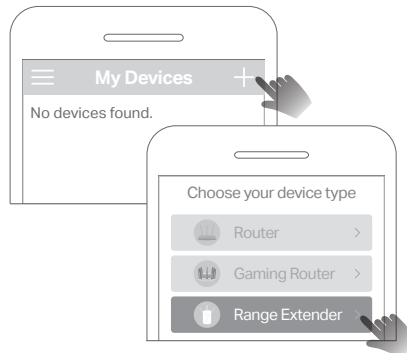


Scan for Tether

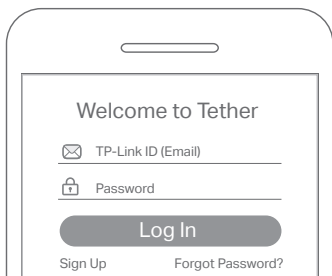


3. Tap the **+** button and select **Range Extender**.

Note: If you cannot find your device, please refer to FAQ > Q1.

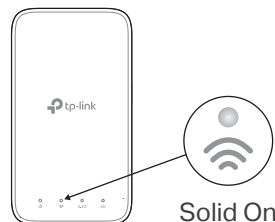


2. Launch the Tether app and log in with your TP-Link ID. If you don't have an account, create one first.



4. Follow app instructions to complete the setup. The LED should turn solid on, indicating successful connection to your router.

Note: If the LED does not turn solid on, please refer to FAQ > Q2.



More Setup Methods

• Via a Web Browser

1. Connect your computer or smartphone to the extender's network TP-Link_Extender.
2. Visit <http://tplinkrepeater.net> or <http://192.168.0.254> in a web browser. Create a password to log in.
3. Follow web instructions to complete the setup.

• Via the WPS Button

1. Press the WPS button on your router.
2. Within 2 minutes, press the WPS button on the extender for 1 second. The LED should change from blinking to solid on, indicating successful connection.
3. If the extender connects to a dual-band router, repeat steps 1 and 2 to connect to the other band.

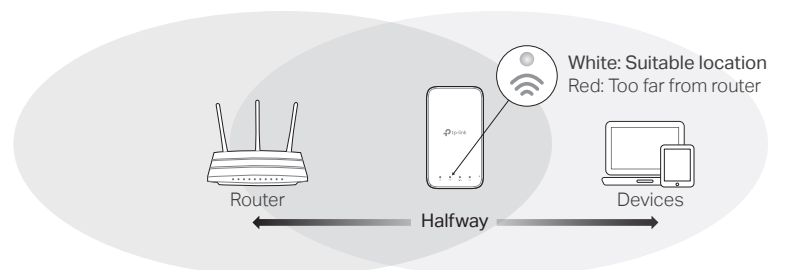
Extended Network Names:
Router's network name with _EXT at the end or Same as your OneMesh router (See back for OneMesh details)
Passwords:
Same as your router

For more details, please refer to the user guide at <https://www.tp-link.com/support/download>.

3 Relocate

1. Plug in the extender about **halfway** between your router and the Wi-Fi dead zone. The location you choose must be **within the range of your router**.
2. Wait for about 2 minutes until the LED turns **solid white**. If it doesn't, relocate the extender closer to the router to achieve better signal quality.

Tip: To place the extender for optimal Wi-Fi performance, access extender settings via the Tether app and go to Tools > Location Assistant, or simply scan the QR code to visit <https://www.tp-link.com/support/faq/3103/>.



Enjoy the internet!

Access Extender Settings

After setup, you can access extender settings via any of the methods below. You can reselect host network, change extended network settings and more.

Note: If your extender and router use the same network name, Method 1 is recommended.



Method 1: Via the Tether App

1. Connect your smartphone to the extender's or router's network.
2. Launch the Tether app, select your extender, and log in.
3. View or change extender settings as needed.

Method 2: Via a Web Browser

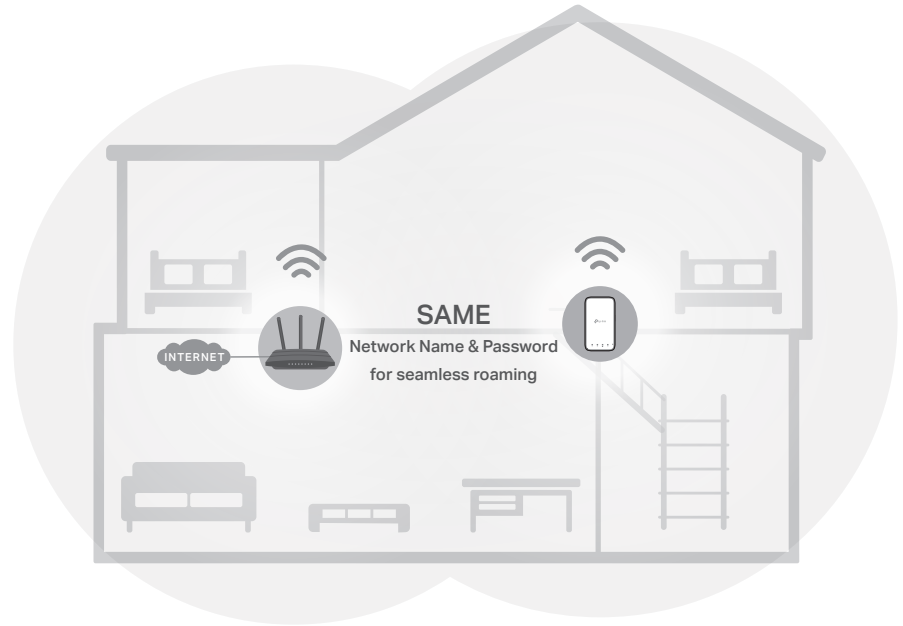
1. Connect your computer or smartphone to the extender's network. If you are using a computer, unplug the Ethernet cable if any.
2. Launch a web browser, enter <http://tplinkrepeater.net> in the address bar, and log in.
3. View or change extender settings as needed.

LED Explanation

LED	Status	Indication
 (Power)	On/Off	The extender is on or off.
	Blinking	The system is starting up or firmware upgrade is in progress.
 (Signal)	Solid white	The extender is connected to your router's wireless network and is in a suitable location.
	Solid red	The extender is receiving a weak signal. Try relocating it closer to your router.
	Blinking	WPS connection is in progress.
	Off	No wireless connection is established.
2.4GHz	On/Off	The extender is connected or not connected to the 2.4GHz wireless network of your host router.
5GHz	On/Off	The extender is connected or not connected to the 5GHz wireless network of your host router.

OneMesh™ with Seamless Roaming

TP-Link OneMesh router and extenders work together to form one unified Wi-Fi network. Walk through your home and stay connected with the fastest possible speeds thanks to OneMesh's seamless coverage.



Unified Wi-Fi Network

Router and extenders share the same wireless settings, including network name, password, access control settings and more.



Seamless Roaming

Devices automatically switch between your router and extenders as you move through your home for the fastest possible speeds.



Easy Setup and Management

Set up a OneMesh network with a push of WPS buttons. Manage all network devices on the Tether app or at your router's web management page.

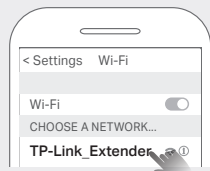
To check full list of TP-Link OneMesh devices, scan the QR code, or visit <https://www.tp-link.com/onemesh/compatibility>.



FAQ (Frequently Asked Questions)

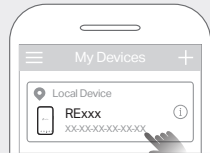
Q1. What should I do if the Tether app cannot find my device?

1. Connect your smartphone to the extender's network TP-Link_Extender.



2. Launch the Tether app, and select your extender.

Tip: If you have connected to the extender's Wi-Fi but still cannot find your device, turn off your cellular data.



3. Follow app instructions to complete the setup.

If you are still having problems, contact our technical support.

Q2. What should I do if the LED doesn't turn solid on after completing setup via the Tether app or web browser?

- You may have entered incorrect Wi-Fi password for your host router during the configuration. Check the password and try again.
 - Make sure the extender is close to your router, preferably within 16 feet, and away from large electrical appliances.
 - If you have enabled wireless MAC filtering, wireless access control, or access control list (ACL) on your router, disable them first, then follow any method on the front page to complete the configuration.
 - Try setting it up via the WPS button.
 - Reset the extender and go through the configuration again.
- If you are still having problems, contact our technical support.

Q3. How do I reset the extender?

- With the extender powered on, use a pin to press the Reset button on the side panel for 1 second. The extender will reboot.



If you need more setup help, please visit <https://www.tp-link.com/support/faq/3074/>, or simply scan the QR code.



Safety Information

- Keep the device away from water, fire, humidity or hot environments.
 - Do not attempt to disassemble, repair, or modify the device. If you need service, please contact us.
 - Do not use the device where wireless devices are not allowed.
 - The socket-outlet shall be installed near the equipment and shall be easily accessible.
- Please read and follow the above safety information when operating the device. We cannot guarantee that no accidents or damage will occur due to improper use of the device. Please use this product with care and operate at your own risk.

TP-Link hereby declares that the device is in compliance with the essential requirements and other relevant provisions of directives 2014/53/EU, 2009/125/EC, 2011/65/EU and (EU) 2015/863. The original EU Declaration of Conformity may be found at <https://www.tp-link.com/en/support/ce>

TP-Link hereby declares that the device is in compliance with the essential requirements and other relevant provisions of the Radio Equipment Regulations 2017. The original UK Declaration of Conformity may be found at <https://www.tp-link.com/support/ukca>



To communicate with TP-Link users or engineers, please join the TP-Link Community at <https://community.tp-link.com>.



If you have any suggestions or needs for our product guides, you are welcome to email techwriter@tp-link.com.cn.



For technical support, replacement services, user manuals and other information, please visit <https://www.tp-link.com/support>, or simply scan the QR code.

