



PHILIPS Soundbar TAB7305 User Guide

[Home](#) » [Philips](#) » PHILIPS Soundbar TAB7305 User Guide 

Contents [[hide](#)]

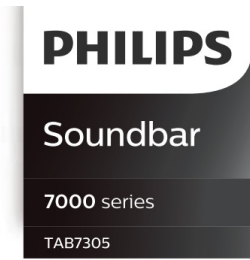
[1 PHILIPS Soundbar TAB7305 Quick Start Guide](#)

[1.1 File Downloads](#)

[1.2 References](#)

[1.3 Related Manuals](#)

PHILIPS Soundbar TAB7305 Quick Start Guide

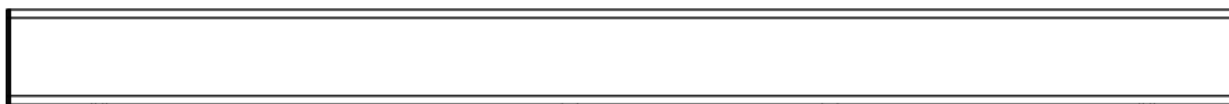


Register your product and get support at www.philips.com/support

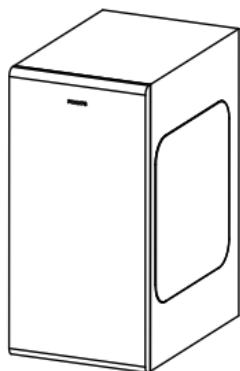


Before using your Product, read all accompanying safety information





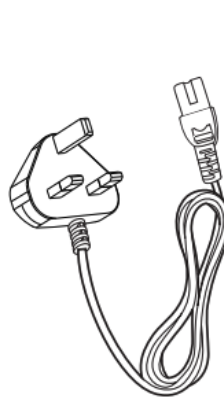
Soundbar



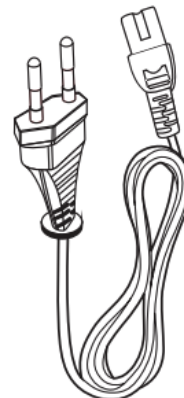
Wireless Subwoofer



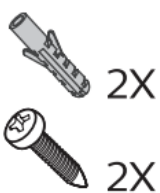
Remote Control



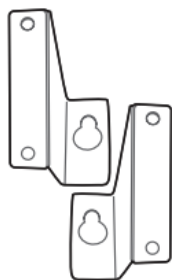
Power Cord 2X



Power Cord 2X



Screws/
Gum Cover



Wall bracket



Worldwide Warranty



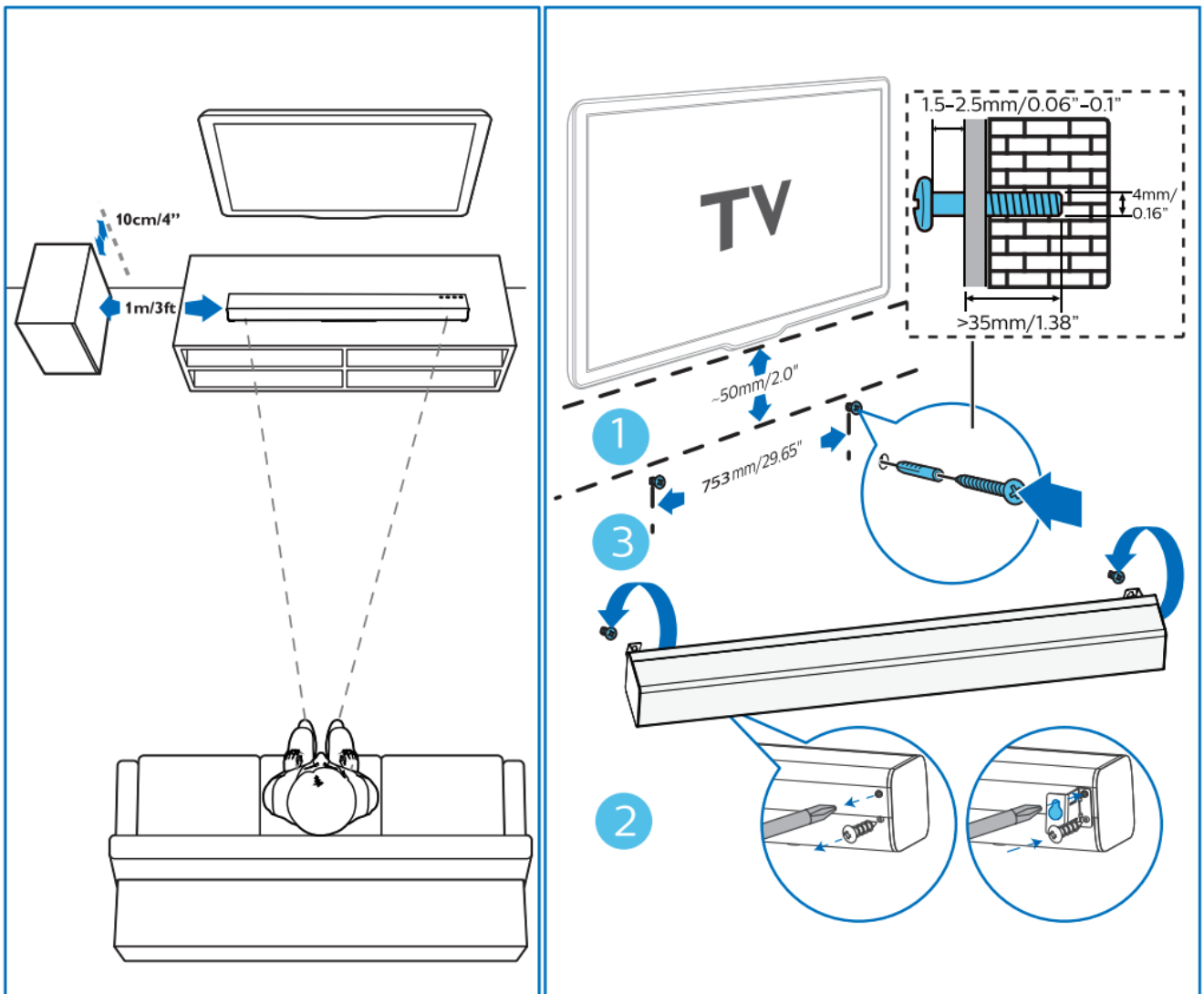
Quick start guide



Safety Sheet

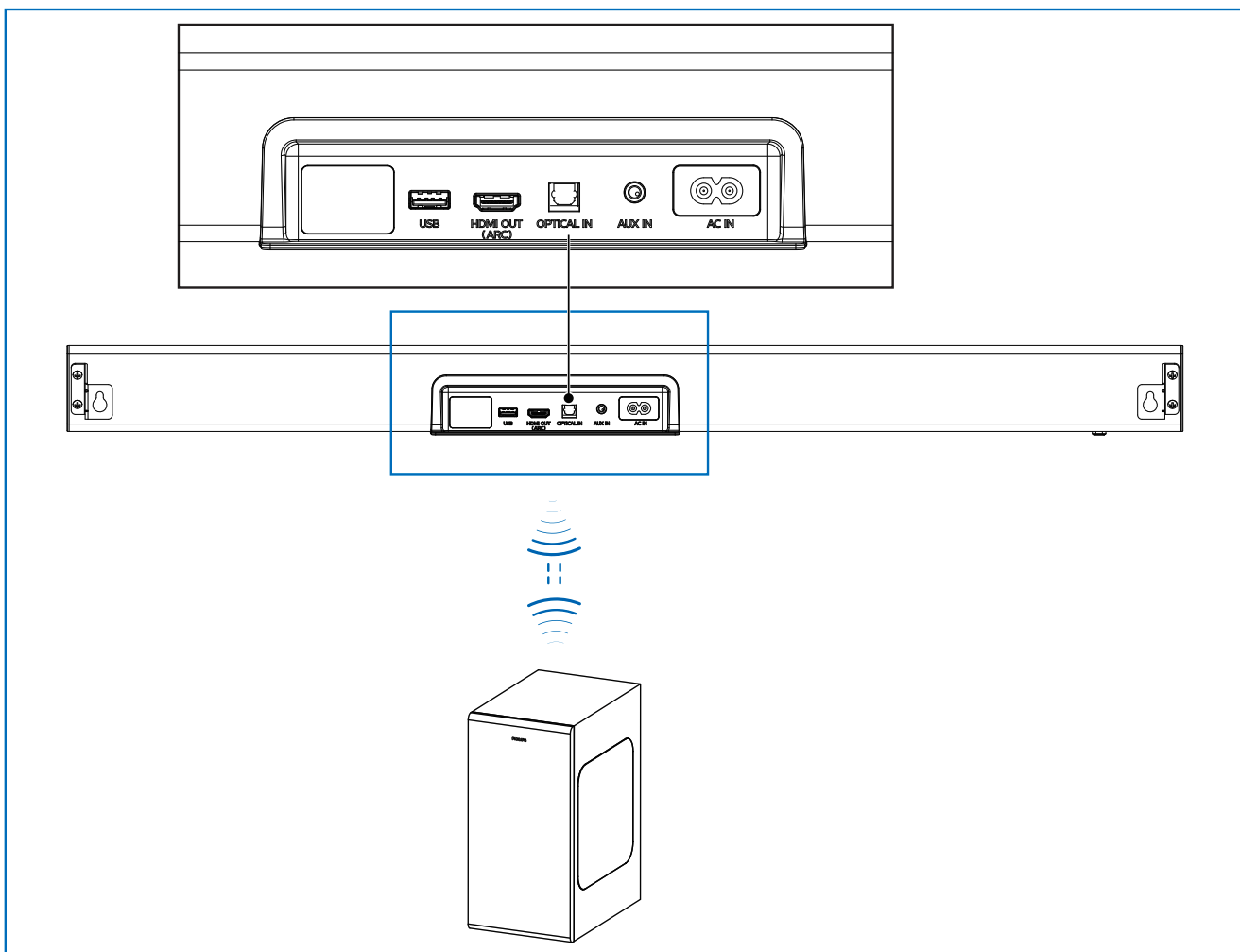
* Power cord quantity and plug type vary by regions.

1. Position the SoundBar / Wall mount the SoundBar (optional)

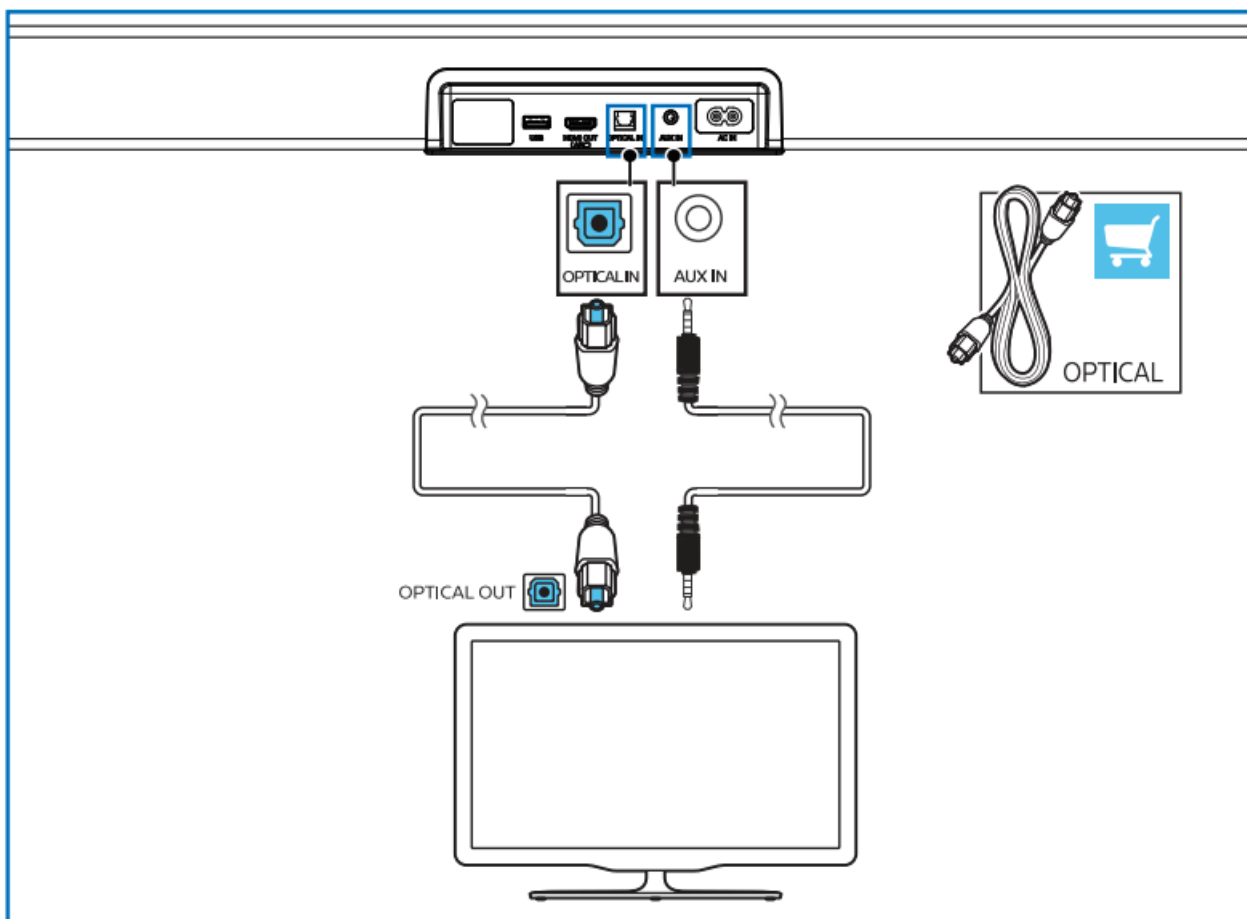
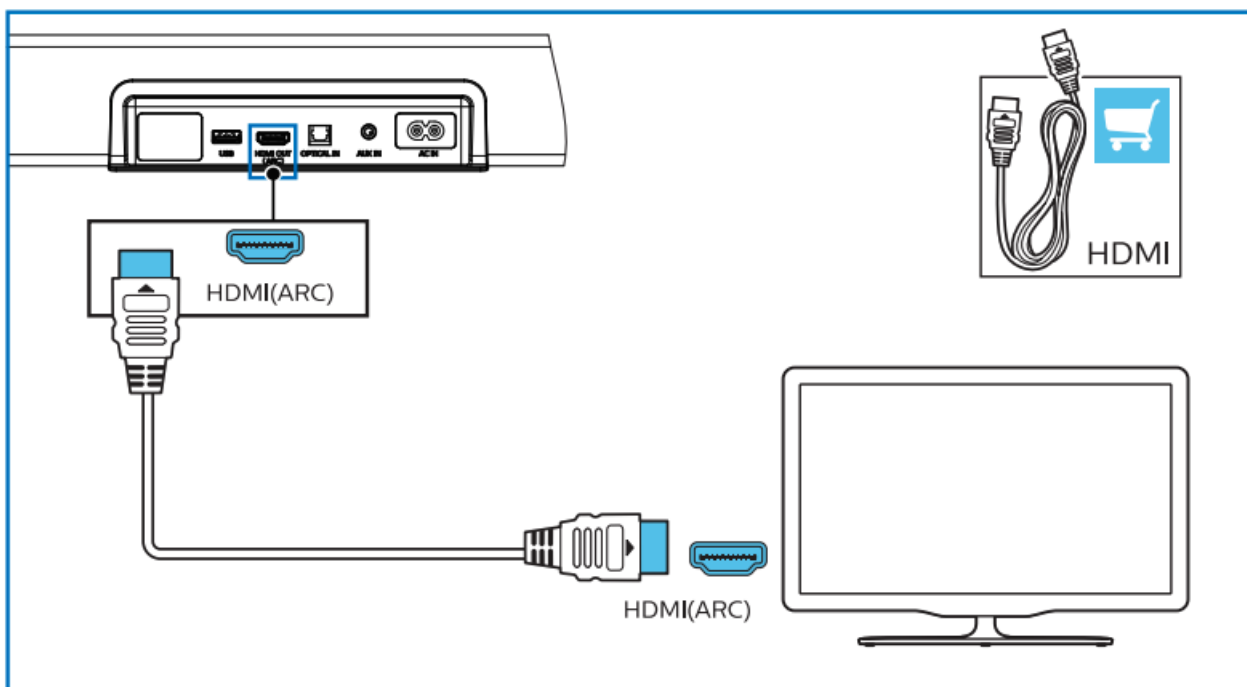


Suggested wall mounting height You are suggested to install the TV first before wall mounting the soundbar. With a TV preinstalled, wall mount the soundbar 50mm/2.0" in distance from the bottom of the TV. If you wall mount the soundbar first, drill 2 parallel holes (?? 3-8mm each according to wall type) in the wall. The distance between the holes should be 753mm/29.65".

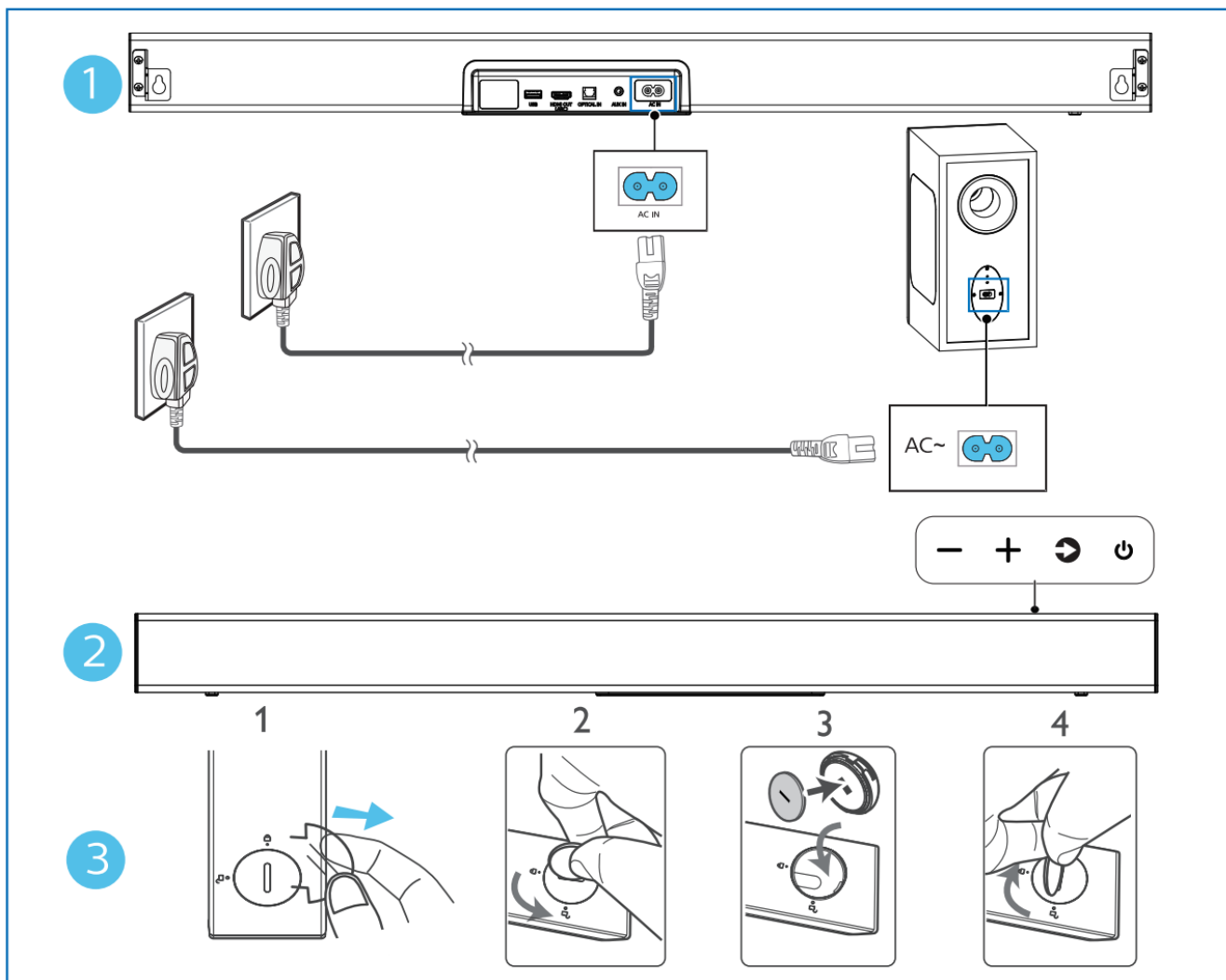
2. Connect the SoundBar



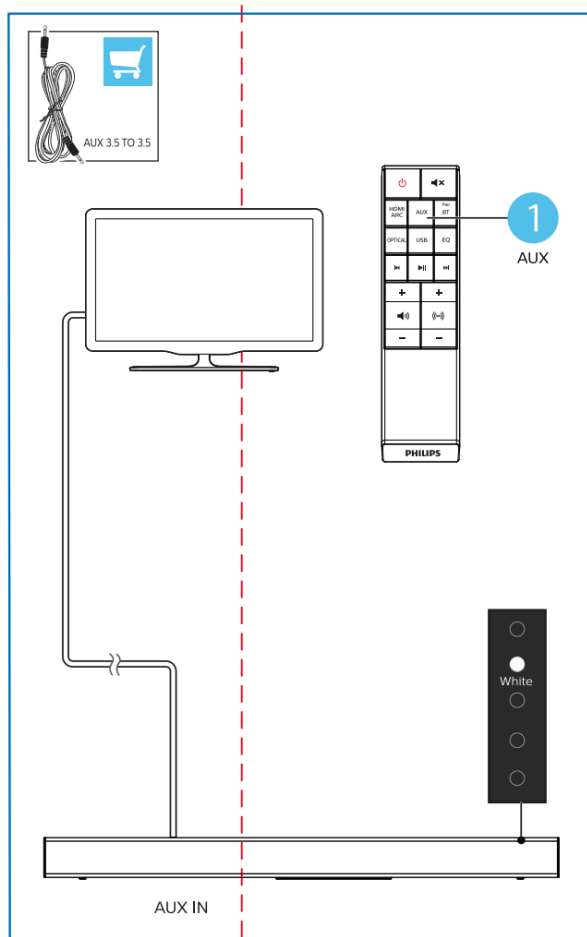
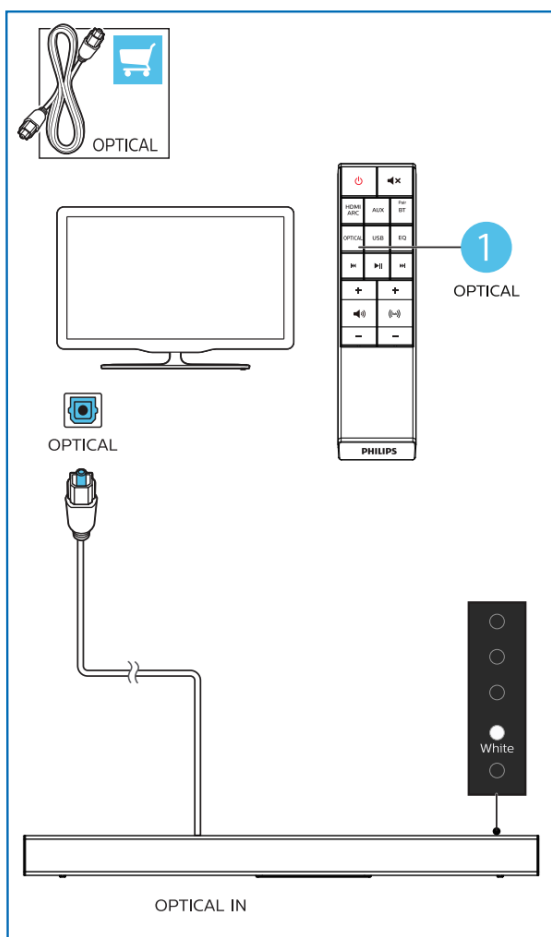
3. Hear audio from TV in one of the following ways

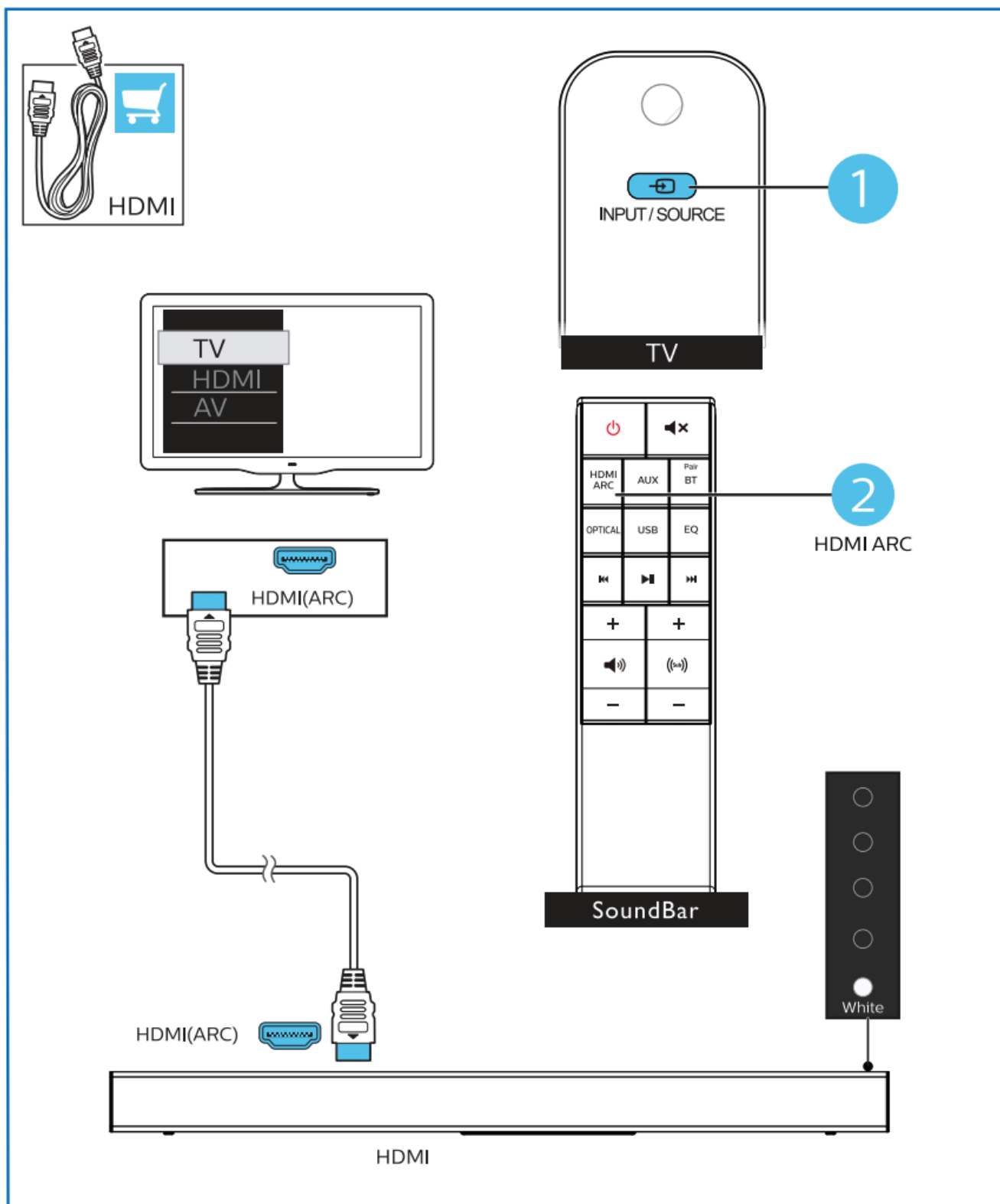


4. Switch on the SoundBar

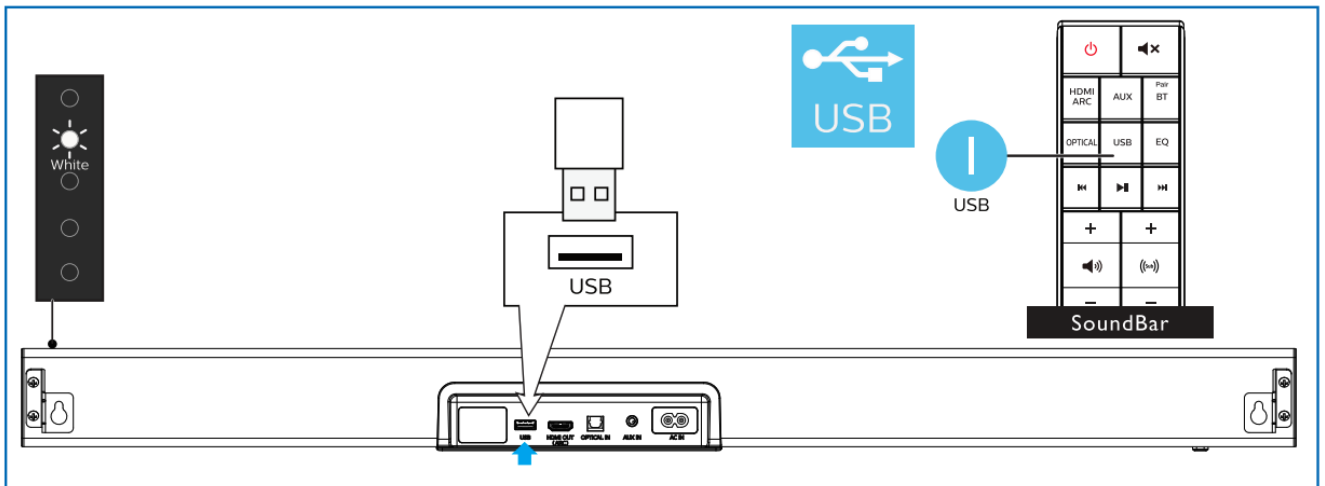
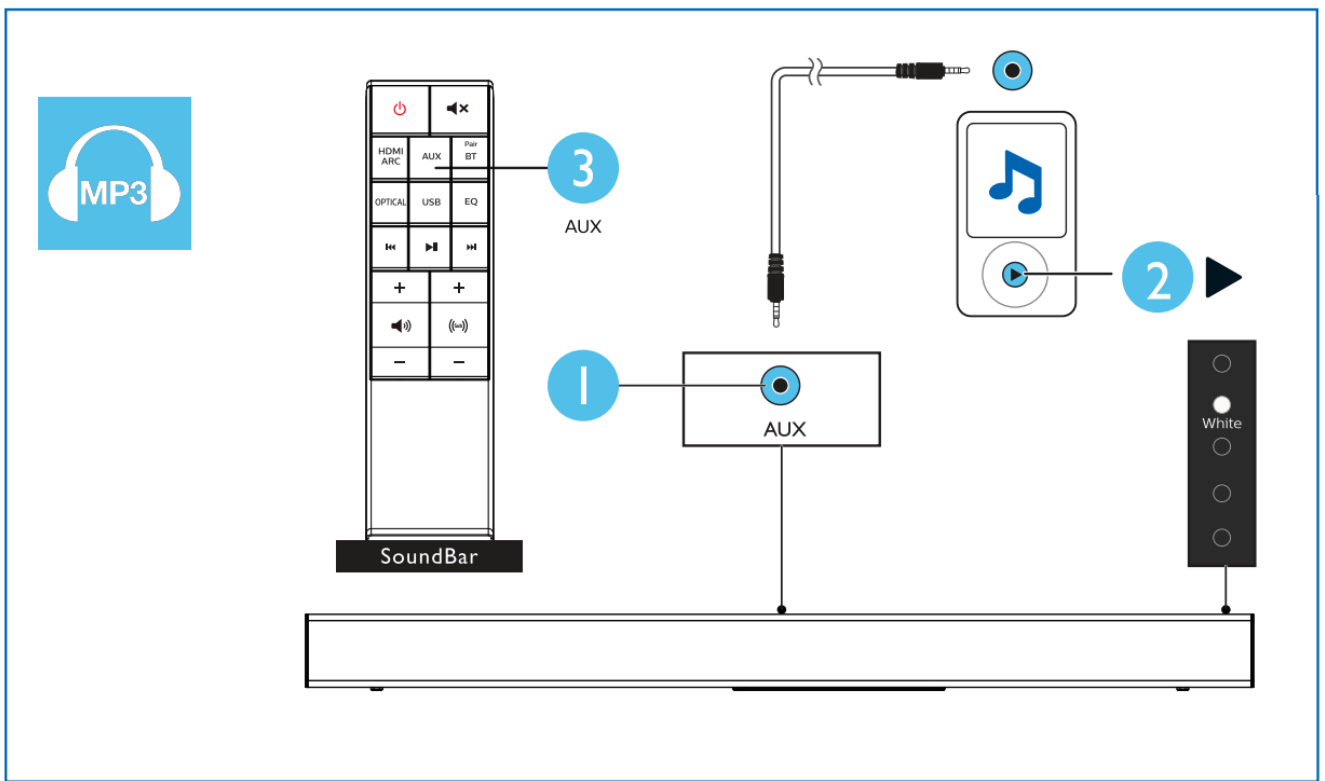


5. Select the correct audio source

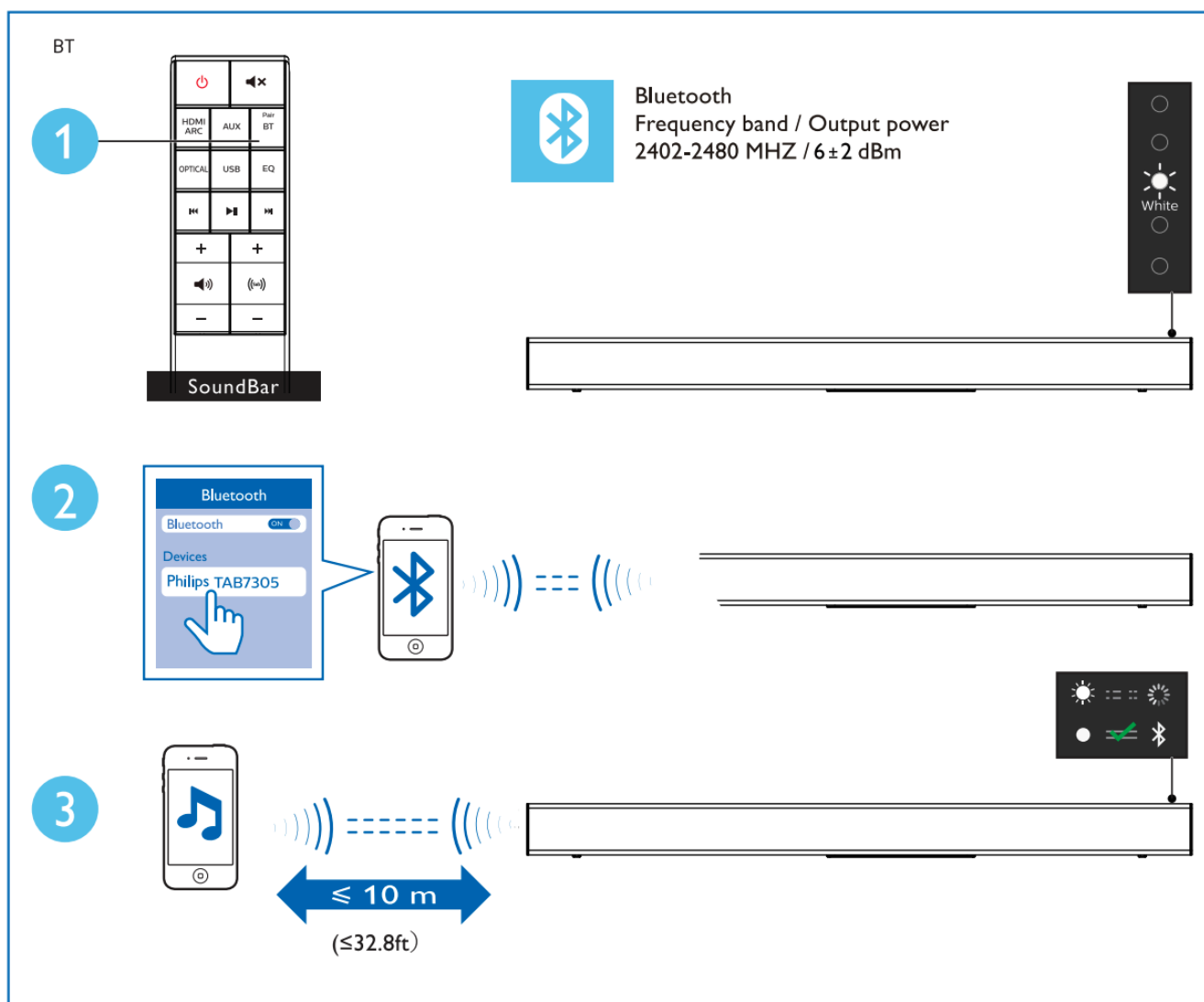




6. Play other devices



7. Play audio through Bluetooth



For more information about using this product, visit www.philips.com/support



www.philips.com/support



The Bluetooth® word mark and logos are registered trademarks owned by the Bluetooth SIG, Inc. and any use of such marks by MMD Hong Kong Holding Limited is under license. Other trademarks and trade names are those of their respective owners.

Manufactured under license from Dolby Laboratories. Dolby, DolbyAudio, and the double-D symbol are trademarks of Dolby Laboratories.

The Adopted Trademarks HDMI, HDMI High-Definition Multimedia Interface, and the HDMI Logo are trademarks

or registered trademarks of HDMI Licensing Administrator, Inc.in the United States and other countries.



Specifications are subject to change without notice. Please visit www.Philips.com/support for the latest updates and documents. Philips and the Philips Shield Emblem are registered trademarks of Koninklijke Philips N.V. and are used under License.

This product has been manufactured by and is sold under the responsibility of MMD Hong Kong Holding Limited or one of its affiliates, and MMD Hong Kong Holding Limited is the warrantor in relation to this product.



File Downloads

	PHILIPS User Guide Soundbar, TAB7305, PHILIPS	Download [optimized] Download
--	--	--

References

- [Bluetooth® Trademark](#)

Related Manuals

1. [PHILIPS TAB7305-37 300W 2.1-Channel Soundbar System User Manual](#) Soundbar System 7000 Series TAB7305 User Manual Register your product...
2. [PHILIPS Soundbar User Guide](#) PHILIPS Soundbar User Guide Before using your product, read all...
3. [PHILIPS Soundbar Speaker User Guide](#) Soundbar Speaker Quick Start Guide HTL3310 Register your product...
4. [PHILIPS TAB5305 Soundbar 2.1 with wireless subwoofer User Guide](#) Philips Soundbar 2.1 with wireless subwoofer 2.1 CH wireless subwoofer...
5. [PHILIPS Soundbar User Manual](#) Soundbar 6000 series TAB6405 User manual Register your product and...
6. [PHILIPS Soundbar User Manual](#) Soundbar 7000 series TAB7305/95 Register your product and get support...