

Job Name _____
 Purchaser _____
 Submitted to _____
 Unit Designation _____

Location _____
 Engineer _____
 Reference _____ Approval _____ Construction _____
 Schedule # _____

Specifications

Model	US Code		CNH12JDB
	Model Number		AC012BNJDCH/AA
Performance	Nominal Capacity	Cooling (Btu/h)	10,200
		Heating (Btu/h)	13,000
Power	Voltage (øV/Hz)		1 / 208-230 / 60
	Nominal Running Current (A)		0.49
Fan	Type		Turbo (1)
	Motor	Type	BLDC (1)
		FLA / Output	35 W
Airflow	CFM	L/M/H	220 / 254 / 300
Refrigerant	Type		R410A
	Control Method		Electronic Expansion Valve (at outdoor unit)
Piping Connections	Liquid (flare)	Inches	1/4
	Suction (flare)	Inches	3/8
	Drain	Inches	ID 1
Unit Dimensions	W X H X D	Inches	28 3/8 X 24 7/16 X 7 13/16
	Weight	lbs.	34.60
Sound Level	L / M / H	dB(A)	33 / 35 / 38
Accessories	Wired Controllers	Advanced	MWR-WG00UN
		Simple Touch	MWR-SH11UN
	24VAC Thermostat Adapter		MIM-A60UN
	Wi-Fi Adapter For Remote Control ¹		MIM-H04UN
	External Temperature Sensor		MRW-TA
	External Contact Control Interface Module		MIM-B14
	CN83 Pigtail		DB39-01263A
	Line sets - insulated and flared, interconnect cables included		25' - ILS2506
50' - ILS5006			
Safety Certifications			ETL (UL 1995)

Nominal cooling capacities are based on: Indoor temperature: 80 °F DB, 67°F WB. Outdoor temperature: 95°F DB, 75°F WB.
 Nominal heating capacities are based on: Indoor temperature: 70 °F DB, 60°F WB. Outdoor temperature: 47°F DB, 43°F WB.
 Samsung HVAC maintains a policy of ongoing development, specifications are subject to change without notice.

¹ MIM-H04UN is only required for remote control of cassette, console, and duct indoor units. Only one per system is required.



- High-voltage terminal block temperature sensor to disable unit in the event overheating of power connection.
- System energy consumption can be viewed using the Samsung SmartThings mobile app (not revenue grade, for reference only)

Indoor Fan

- Indoor fan is turbo type with a single fan motor
- Three fan speed settings and auto setting
- Washable filter as standard (included)
- The front panel shall have LED indicator lights, touch controls, IR receiver, and 1 motorized louver.
- The unit shall discharge cool air from the upper outlet louver (motorized upper and lower) (manual adjustment only) outlets while in heating mode.

Construction

- Insulated, HIPS chassis certified to UL94 V0

Controls

- Control wiring shall be 2 X 16 AWG
- The unit shall be operated via a wireless or wired remote control with DDC type signal
- Dual set temperature support when connected to MWR-WG00UN Advanced Wired Controller or central control options.
- Wired controllers must be purchased separately
- The unit shall ship with a wireless controller, holder, and batteries.

Refrigerant System

- Refrigerant flow shall be controlled by an electronic expansion valve at outdoor unit

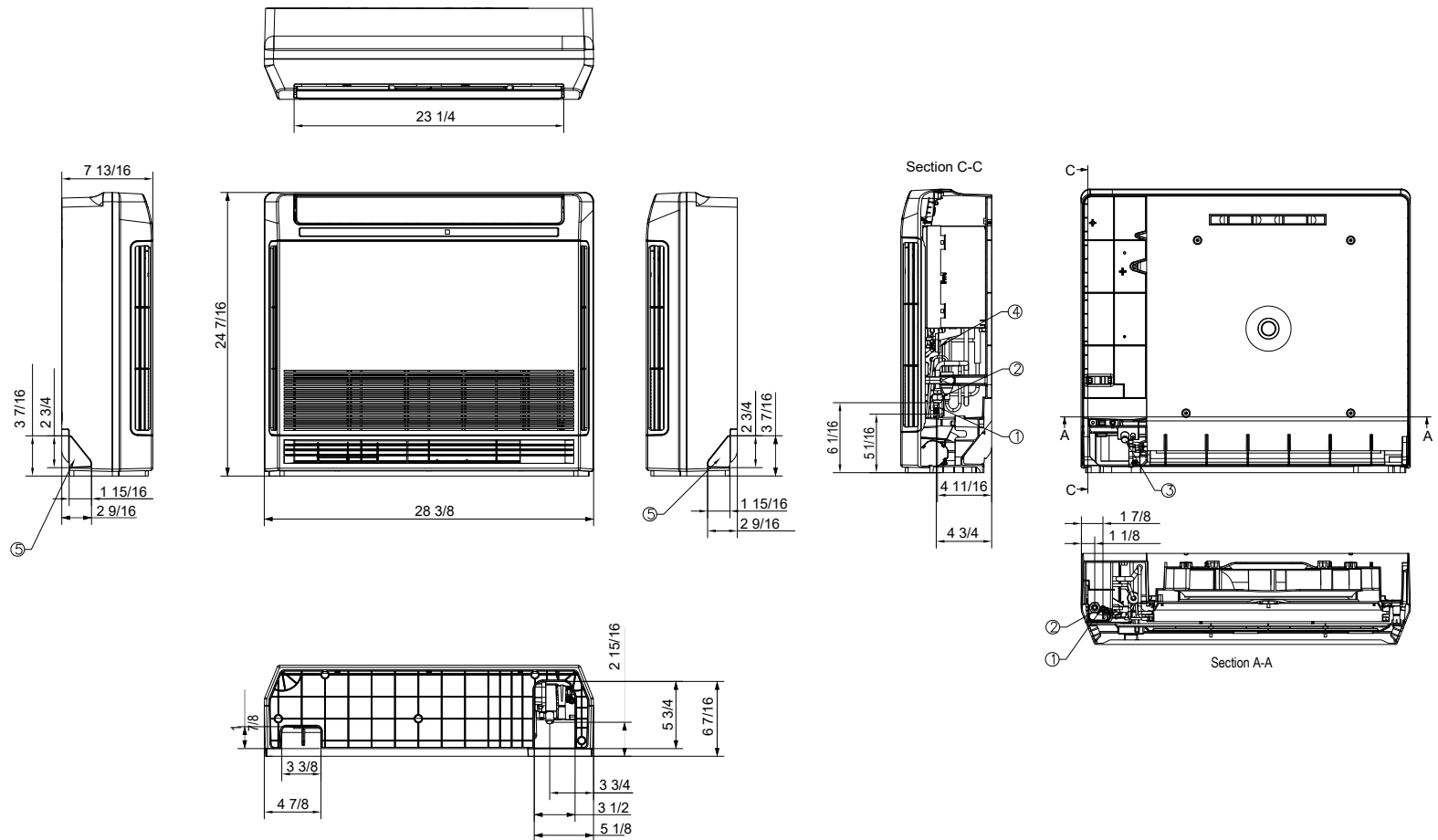
Warranty

10 Years compressor, 10 years parts, 1 year limited labor when registered

Compatibility

Will only operate with Samsung outdoor unit model numbers:

AC012BXADCH/AA (CXH12ADB), AJ020BXJ2CH/AA (JXH20J2B), AJ024BXJ3CH/AA (JXH24J3B), AJ036BXJ4CH/AA (JXH36J4B), AJ048BXJ5CH/AA (JXH48J5B), AJ020BXS3CH/AA (JXH20S3B), AJ024BXS4CH/AA (JXH24S4B), AJ030BXS4CH/AA (JXH30S4B), AJ036BXJ4CH/AA (JXH36J4B), AJ036BXS4CH/AA (JXH36S4B), AJ048BXJ5CH/AA (JXH48J5B)



No.	Description
1	Liquid pipe connection
2	Suction pipe connection
3	Drain connection
4	Power and comm.wire conduit
5	Drain Knockout