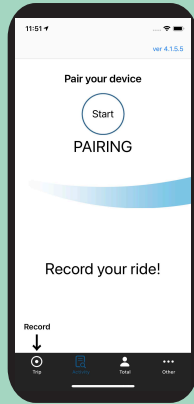




AirGPS QUICK CHART

SETUP

STEP 1



Download Cateye Cycling app.

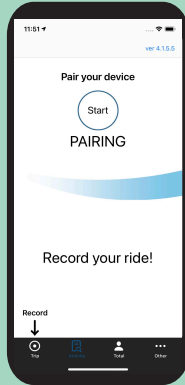


Cateye Cycling



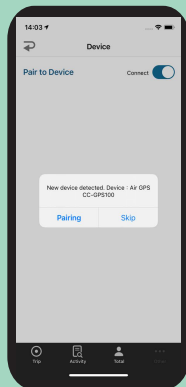
STEP 2

Long Press



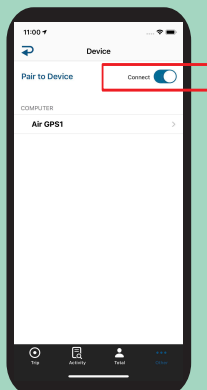
Power on AirGPS.
Open the app and press
[Start] to begin pairing.

STEP 3



After AirGPS is detected,
press [Pairing].

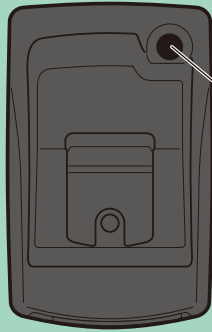
STEP 4



After completion of pairing,
turn [Connect] off.

RECORD YOUR RIDE

STEP
1



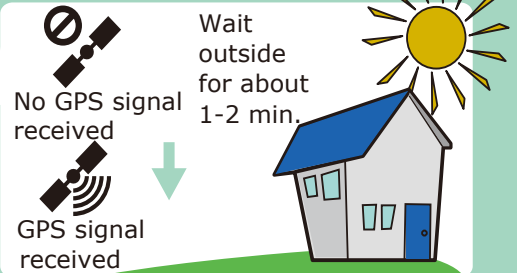
Power on.

⏻ Long press

STEP
2



Get GPS signal.

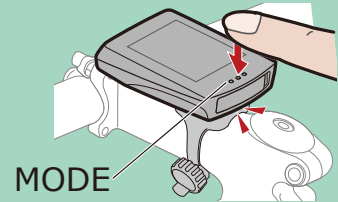
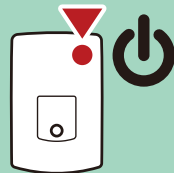


STEP
3



Start recording.

Press POWER or MODE button.

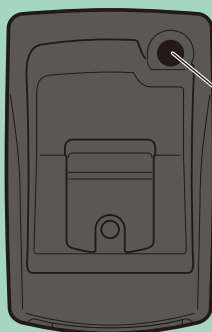


Press MODE:
Changes bottom
row data.



Long press MODE:
Pauses/resumes
recording.

STEP
4



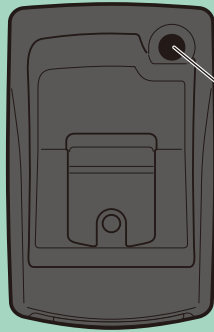
Power off to end recording.

⏻ Long press

Ride data will be automatically saved.

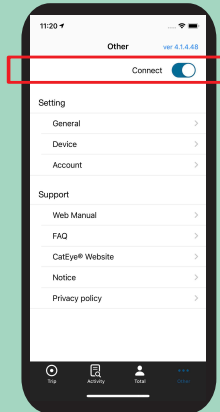
IMPORT RIDE DATA

STEP
1



Power on.
⏻ Long press

STEP
2



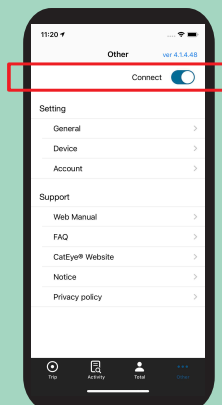
Open Cateye Cycling app and turn [Connect] on.

**Press Device > AirGPS >  .
Select activity you want to import and then press  .**

STEP
3



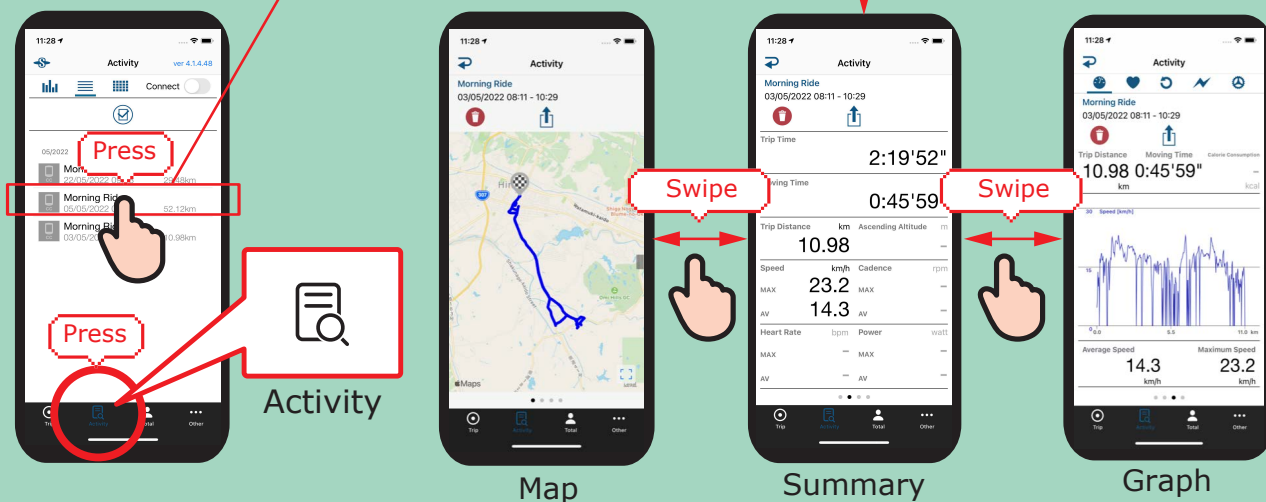
STEP
4



After completion of import, turn [Connect] off.


VIEW RIDE DATA

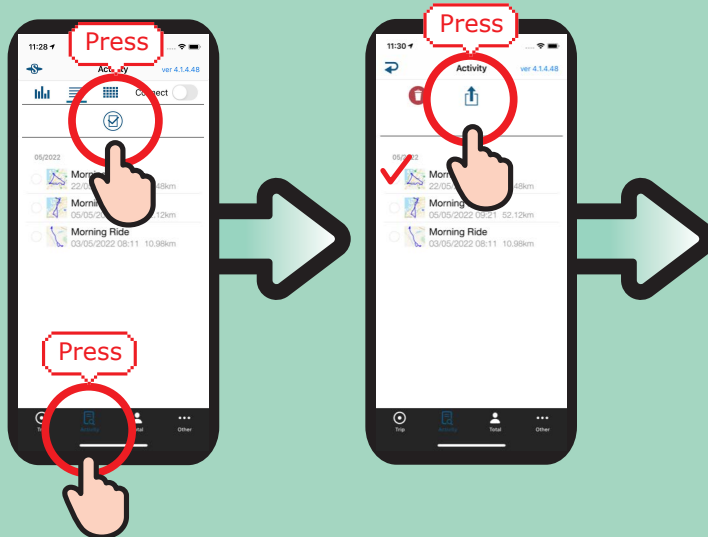
Select activity.



UPLOAD TO WEBSITES

Press Activity and then  .

Select activity you want to upload and press  .



share your adventure.
CATEYE Atlas

STRAVA

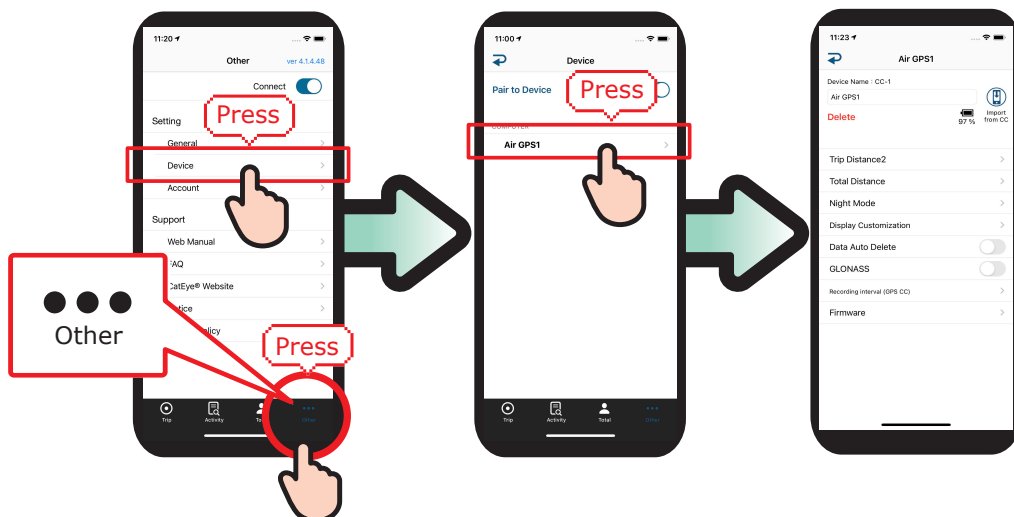
TRAINING PEAKS

CHANGE SETTINGS



- 1) Open Cateye Cycling™ app.
- 2) Press ○○○ Other > Device > AirGPS

Changes will be applied when your AirGPS connects to app.



Settable items

- Display customization
- Backlit (Night mode)
- Data auto delete
- GLONASS
- Sensor selection
- Recording interval
- Distance 2 reset
- Total distance
- Firmware

USE WITH SENSORS



Pair sensors with your AirGPS through app.

Through Cateye Cycling™ app, CATEYE brand sensors can be paired with your AirGPS and tire circumference can be set.



ISC-12



SPD-30



CDC-30



HR-12



OHR-31

Please read the instruction manual for more details.
<https://cateye.com/intl/support/manual/CC-GPS100.html>