

## Model Down Grade U Series U10-5

### U10-5

#### Hydraulic Excavator

##### FEATURES

Rubber Tracks  
2-Post Foldable ROPS  
Variable Width Track Frame  
2 Gear Type Pumps  
Two Operating Pattern Selection System  
Standard Front Dozer Blade  
360 Degree Full Rotation  
55° Left and 55° Right Boom Swing Angle  
5.5 GPM Auxiliary Hydraulics Port  
Five Second Quick Preheat System  
Key Switch Stop System  
Self Bleed Fuel System  
Two Speed Travel

##### BASIC UNIT

U10-5, Rubber tracks, 2-Post Foldable ROPS

##### DIMENSIONS AND OPERATING WEIGHT

U10-5:	
Overall Length	9' 9"
Overall Width	2'6" ~ 3' 3"
Overall Height	7'5"
Operating Weight*	2646 lbs.
Ground Clearance	5.5"

\*Includes operator's weight of 165 lbs.

##### ENGINE

D722 Kubota E-TVCS Tier 4 Final Diesel Engine  
3 Cylinder, 4 Cycle  
10.3 Gross HP (SAE J1995) @ 2050 RPM  
10.1 Net HP (SAE J1349) @ 2050 RPM

##### OPERATIONAL DIMENSIONS

Max Digging Depth	5' 11"
Max Digging Radius @ Ground Level	10' 11"
Max Vertical Digging Depth	5' 1"
Max Dumping Height	7' 3"

##### DOZER BLADE DIMENSIONS

Width	30"/39"
Height	7.9"
Lift Above Ground	7.9"
Drop Below Ground	7.1"

##### PERFORMANCE

Digging Force @ Bucket (K9776)	2337 lbs.
Digging Force @ Dipper Arm	1010 lbs.
Travel Speed (Low/High)	1.2/2.5 mph
Climbing Ability	27% / 15°
Ground Pressure	4.3 psi
Lift Capacity	660 lbs.
<ul style="list-style-type: none"><li>• Over End</li><li>• Blade Grounded</li><li>• 2 Ft. Load Point Height</li><li>• 6 Ft. Load Radius</li></ul>	

# KUBOTA

## Model Downgrade K Series U10-5

ORDER CODE	DESCRIPTION	APPROX. WEIGHT	
<b>PART 1</b>	<b>MODEL U10-5 BASIC UNIT</b>		
<b>U10-5</b>	<b>Excavator Basic Unit</b>	2,646	<b>-\$23,079.00</b>
With:	Rubber Tracks, 2-Post Foldable ROPS, Dozer Blade, Dipper Arm, and Counterweight		
<b>PART 2</b>	<b>BUCKETS</b>		
K9775	10 inch 0.49 cu. ft. PIN ON BUCKET (Welded teeth)	36	\$392.00
K9776	14 inch 0.74 cu. ft. PIN ON BUCKET (Welded teeth)	44	\$474.00
K7759	8 inch 0.35 cu. ft. H.D. BUCKET (Bolt-on teeth)	45	\$629.00
K7760	10 inch 0.49 cu. ft. H.D. BUCKET (Bolt-on teeth)	57	\$640.00
K7768	12 inch 0.63 cu. ft. H.D. BUCKET (Bolt-on teeth)	53	\$655.00
K7769	16 inch 0.9 cu. ft. H.D. BUCKET (Bolt-on teeth)	70	\$731.00
<b>PART 3</b>	<b>ATTACHMENTS</b>		
K7147	TWO WAY SERVICE PORT HYDRAULIC KIT The K7748 converts the auxiliary hydraulics from one way to two-way flow. Includes manual, hydraulic hoses, and fittings	6	\$325.00
K9943A	3" SEAT BELT OPTION As required in some states for OSHA compliance.	3	\$101.00
K7114	REPLACEMENT 2-POST FOLDABLE ROPS	154	\$1,507.00
<b>PART 5</b>	<b>Kubota<i>NOW</i> TELEMATICS SERVICE (each order will require the DCU6700 modem and model specific wiring harness) <i>KubotaNOW Telematics Service includes a three (3) year term</i></b>		
DCU6700	AT&T Telematics Modem	1	\$443.00
K6707	Excavator Telematics Wiring Harness	2	\$139.00
<b>PART 6</b>	<b>AVAILABLE FROM PARTS</b>		
	77700-12872 Tethered Fuel Cap		

## Model Downgrade K Series U17VR1

### Zero Tail Swing Hydraulic Excavator

#### FEATURES

Zero Tail Swing  
Short Pitch Rubber Tracks  
ROPS/OPG (Top Guard, Level 1) 4 Post Canopy  
Variable Width Track Frame  
Kubota 3 Hydraulic Pump Design  
1 Gear, 2 Variable Displacement Pumps  
Hydraulic Joystick Controls with Wrist Rests  
Two Operating Pattern Selection System  
Standard Front Dozer Blade with Extensions  
360 Degree Full Rotation  
65° Left and 58° Right Boom Swing Angle  
7.3 GPM Auxiliary Hydraulics Port  
Five Second Quick Preheat System  
Key Switch Stop System  
Self Bleed Fuel System  
Two Speed Travel

#### BASIC UNIT

U17VR1, Rubber tracks, 4-Post ROPS/OPG  
(Top Guard, Level 1)

#### DIMENSIONS AND OPERATING WEIGHT

U17VR1, Rubber tracks, 4-Post ROPS/OPG  
(Top Guard, Level 1)  
Overall Length 11' 7"  
Overall Width 3'3" ~ 4'1"  
Overall Height 7'8"  
Operating Weight\* 3703 lbs.  
Ground Clearance 5.9"

\*Includes operator's weight of 175 lbs.

#### ENGINE

D902 Kubota E-TVCS Tier 4 Final Diesel Engine  
3 Cylinder, 4 Cycle  
16.1 Gross HP (SAE J1995) @ 2300 RPM  
15.1 Net HP (SAE J1349) @ 2300 RPM

#### OPERATIONAL DIMENSIONS

Max Digging Depth	7' 7"
Max Digging Radius @ Ground Level	12' 7"
Max Vertical Digging Depth	6' 3"
Max Dumping Height	8' 0"

#### DOZER BLADE DIMENSIONS

Width	3'3"/4'1"
Height	10.3"
Lift Above Ground	11.0"
Drop Below Ground	7.5"

#### PERFORMANCE

Digging Force @ Bucket (K7970)	3417 lbs.
Digging Force @ Dipper Arm	1918 lbs.
Travel Speed (Low/High)	1.4/2.6 mph
Climbing Ability	36% / 20°
Ground Pressure	3.8 psi
Lift Capacity	1140 lbs.
• Over End	
• Blade Grounded	
• 2 Ft. Load Point Height	
• 8 Ft. Load Radius	

# KUBOTA

## Model Downgrade K Series U17VR1

ORDER CODE	DESCRIPTION	APPROX. WEIGHT	
<b>PART 1</b>	<b>MODEL U17 BASIC UNITS</b>		
<b>U17VR1</b>	<b>Excavator Basic Unit</b>	3,814	<b>-\$17,909.00</b>
With:	Rubber Tracks, 4-Post ROPS/OPG (Top Guard, Level I) Canopy, Dozer Blade, Dipper Arm, Counterweight		
<b>PART 2</b>	<b>BUCKETS</b>		
	<b>PIN-ON BUCKETS</b>		
K7779A	9 inch 0.52 cu. ft. 2-HOLE H.D. BUCKET	57	\$745.00
K7780A	12 inch 0.74 cu. ft. 2-HOLE H.D. BUCKET	82	\$768.00
K7781	16 inch 0.95 cu. ft. 2-HOLE H.D. BUCKET	94	\$848.00
K7785	18 inch 1.1 cu. ft. 2-HOLE H.D. BUCKET	95	\$1,054.00
	<b>QUICK ATTACH BUCKETS</b>		
K7966A	QUICK COUPLER Includes 2 mounting pins, 1 locking pin, and hardware.	20	\$1,158.00
K7967A	9 inch 0.78 cu. ft. TRENCHING BUCKET (RETAIL ONLY)	86	\$599.00
K7967	9 inch 0.78 cu. ft. TRENCHING BUCKET (PLANNED ONLY)	78	\$623.00
K7968A	12 inch 1.0 cu. ft. TRENCHING BUCKET (RETAIL ONLY)	108	\$774.00
K7968	12 inch 1.0 cu. ft. TRENCHING BUCKET (PLANNED ONLY)	91	\$805.00
K7969A	16 inch 1.3 cu. ft. TRENCHING BUCKET (RETAIL ONLY)	108	\$899.00
K7969	16 inch 1.3 cu. ft. TRENCHING BUCKET (PLANNED ONLY)	108	\$935.00
K7970A	18 inch 1.5 cu. ft. TRENCHING BUCKET (RETAIL ONLY)	115	\$959.00
K7970	18 inch 1.5 cu. ft. TRENCHING BUCKET (PLANNED ONLY)	116	\$997.00
K9607	BUCKET HANGERS Set of 2 ear blanks. Converts buckets to quick coupler style. Modification to match bucket contour required.	12	\$276.00
<b>PART 3</b>	<b>ATTACHMENTS</b>		
K9919	CANOPY WORK LIGHT KIT	4	\$139.00
K9773	TRAVEL ALARM KIT Emits an audible signal when traveling forward or reverse	7	\$352.00
<b>PART 4</b>	<b>ROPS / OPG (Top Guard, Level I)</b>		
K9782	REPLACEMENT 4-POST ROPS / OPG (Top Guard, Level I) CANOPY	20	\$1,511.00

# KUBOTA

## K Series U17VR1

ORDER CODE	DESCRIPTION	APPROX. WEIGHT	
K9943A	RETRACTABLE SEAT BELT OPTION (3") As required in some states for OSHA compliance.	3	\$101.00
PART 5	<b>KubotaNOW TELEMATICS SERVICE</b> (each order will require the DCU6700 modem and model specific wiring harness) <b><i>KubotaNOW Telematics Service includes a three (3) year term</i></b>		
DCU6700	AT&T Telematics Modem	1	\$443.00
K6706	Excavator Telematics Wiring Harness	2	\$139.00
PART 6	<b>AVAILABLE FROM PARTS</b>		
70000-01602	Screen Type Spark Arrestor		\$190.00
77700-08686	Strobe Light, Class 2, LED, flashing strobe w/ vacuum magnetic mounting		\$240.00
77700-08687	Rotating Beacon, Class 1, halogen (beacon light only) w/ magnetic mounting		\$177.00
77700-10379	Wire harness needed for installation of Strobe (77700-08686) and Beacon (77700-08687)		\$34.00
77700-12872	Tethered Fuel Cap		\$29.00

## Model Downgrade K Series U27-4

### U27-4

#### Min Tail Swing Hydraulic Excavator

##### FEATURES

Min Tail Swing  
Half Pitch Rubber Tracks  
ROPS/OPG (Top Guard, Level 1) 4 Post Canopy  
Or Cab w/ HEAT ONLY, Suspension Seat  
Kubota 3 Hydraulic Pump Design  
1 Gear; 2 Variable Displacement Pumps  
Hydraulic Joystick Controls with Wrist Rests  
Two Operating Pattern Selection System  
Standard Front Dozer Blade  
360 Degree Full Rotation  
75° Left and 55° Right Boom Swing Angle  
12.7 GPM Auxiliary Hydraulics Port  
Five Second Quick Preheat System  
Key Switch Stop System  
Self Bleed Fuel System  
Two Speed Travel with Auto Downshift  
Thumb Bracket and Relief Valves

##### BASIC UNIT

U27-4R1, Rubber tracks, 4-Post ROPS/OPG  
(Top Guard, Level 1) Canopy, Dipper Arm,  
Counterweight  
U27-4R2, Rubber tracks, 4-Post ROPS/OPG  
(Top Guard, Level 1) Cab, Dipper Arm,  
Counterweight

##### DIMENSIONS AND OPERATING WEIGHT

U27-4, Rubber tracks, 4-Post ROPS/OPG (Top  
Guard, Level 1) Canopy, Dipper Arm,  
Counterweight

Overall Length	13' 6"
Overall Width	4' 11"
Overall Height	7' 10"
Operating Weight*	5,688lbs.
Ground Clearance	12.1"

\*Includes operator's weight of 175 lbs.

##### ENGINE

D1105-BH Kubota Tier 4 Final Diesel Engine  
3 Cylinder, 4 Cycle  
20.8 Gross HP (SAE J1995) @ 2400 RPM  
20.0 Net HP (SAE J1349) @ 2400 RPM

##### OPERATIONAL DIMENSIONS

Max Digging Depth	9' 5"
Max Digging Radius @ Ground Level	15' 4"
Max Vertical Digging Depth	7' 8"
Max Dumping Height	10'

##### DOZER BLADE DIMENSIONS

Width	59"
Height	11.8"
Lift Above Ground	14.0"
Drop Below Ground	13.0"

##### PERFORMANCE

Digging Force @ Bucket	7014 lbs.
Digging Force @ Dipper Arm	2777 lbs.
Travel Speed (Low/High)	1.6/2.7 mph
Climbing Ability	36% / 20°
Ground Pressure	3.3 psi
Lift Capacity	2050 lbs.
<ul style="list-style-type: none"> <li>Over Front</li> <li>Blade Grounded</li> <li>2 Ft. Load Point Height</li> <li>8 Ft. Load Radius</li> </ul>	

# KUBOTA

## Model Downgrade K Series U27-4

ORDER CODE	DESCRIPTION	APPROX. WEIGHT	
<b>PART 1</b>	<b>MODEL U27-4 BASIC UNITS</b>		
<b>U27-4R1</b>	<b>Excavator Basic Unit</b>	5,688	<b>-\$9,594.00</b>
With:	Rubber Tracks, 4-Post ROPS/OPG (Top Guard, Level I) Canopy, Dozer Blade, Dipper Arm, Counterweight		
<b>U27-4R2</b>	<b>Excavator Basic Unit</b>	5,908	<b>-\$4,445.00</b>
With:	Rubber Tracks, 4-Post ROPS/OPG (Top Guard, Level I) Cab, <b>HEAT ONLY</b> , Dozer Blade, Dipper Arm, Counterweight		
<b>PART 2</b>	<b>BUCKETS</b>		
	<b>PIN-ON BUCKETS (Order Attaching Pins from Parts)</b>		
K7150	9 inch 3-HOLE H.D. BUCKET	110	\$ 1,059.00
K7151	12 inch 1.44 cu. ft. 3-HOLE H.D. BUCKET	146	\$ 1,236.00
K7152	16 inch 2.12 cu. ft. 3-HOLE H.D. BUCKET	140	\$ 1,402.00
K7154	24 inch 3.40 cu. ft. 3-HOLE H.D. BUCKET	223	\$ 1,596.00
	<b>QUICK ATTACH BUCKETS</b>		
K7130	<b>QUICK COUPLER - (Welded Steel Coupler)</b> Curl hole and power hole built into quick coupler. Includes 2 mounting pins, 1 locking pin, and hardware.	39	\$1,081.00
K7130A	<b>QUICK COUPLER - (New Cast Coupler)</b> Curl hole and power hole built into quick coupler. Includes 2 mounting pins, 1 locking pin, and hardware.	40	\$1,246.00
K9781	<b>BUCKET HANGERS</b> Set of 2 bucket ear blanks. Converts buckets to quick coupler style. Modification to match bucket contour required.	15	\$599.00
K7975	9 inch 1.0 cu. ft. TRENCHING BUCKET	110	\$999.00
K7976	12 inch 1.4 cu. ft. TRENCHING BUCKET	135	\$1,057.00
K7977	16 inch 1.9 cu. ft. TRENCHING BUCKET	150	\$1,200.00
K7978	18 inch 2.2 cu. ft. TRENCHING BUCKET The K7978 bucket has four teeth. The K7131 Thumb tines contact the end of the teeth and do not mesh between the teeth.	155	\$1,342.00
K7979	24 inch 3.0 cu. ft. TRENCHING BUCKET	180	\$1,484.00

# KUBOTA

## K Series U27-4

ORDER CODE	DESCRIPTION	APPROX. WEIGHT	PRICE
<b>PART 3</b>	<b>ATTACHMENTS</b>		
K7131	HYDRAULIC THUMB KIT K7130 Quick Coupler required.	200	\$2,230.00
K7420	TRAVEL PEDAL KIT (for foot travel control)	7	\$285.00
K7425	RETRACTABLE SEAT BELT OPTION (3") As required in some states for OSHA compliance.	3	\$90.00
K7140	CANOPY WORK LIGHT KIT **Open Rops Only	4	\$229.00
K7141	MIRROR KIT **Cab ONLY	11	\$243.00
K7144	TRAVEL ALARM KIT Emits an audible signal when traveling forward or reverse	2	\$229.00
K7145	SPARK ARRESTOR MUFFLER KIT Optional kit for use in close proximity with grass, brush, timber and similar material with potential for ignition. This kit enables the use of the 70000-01602 screen type spark arrester. The 70000-01602 screen type spark arrester CANNOT be used with the stock muffler.	10	\$420.00
<b>PART 4</b>	<b>ROPS / OPG (Top Guard, Level I)</b>		
K7142	REPLACEMENT 4-POST ROPS / OPG (Top Guard, Level I) CANOPY	154	\$1,535.00
K7143	REPLACEMENT 4-POST ROPS / OPG (Top Guard, Level I) Cab, HEAT ONLY	558	\$6,080.00
K7425	RETRACTABLE SEAT BELT OPTION (3")	3	\$90.00
<b>PART 5</b>	<b>KubotaNOW TELEMATICS SERVICE (each order will require the DCU6700 modem and model specific wiring harness) KubotaNOW Telematics Service includes a three (3) year term</b>		
DCU6700	AT&T Telematics Modem	1	\$444.00
K6704	Excavator Telematics Wiring Harness	2	\$135.00
<b>PART 6</b>	<b>AVAILABLE FROM PARTS</b>		
70000-01602	Screen Spark Arrestor ( requires K7145)		<b>\$190.00</b>
77700-08686	Strobe Light, Class 2, LED, flashing strobe w/ vacuum magnetic mounting		<b>\$240.00</b>
77700-08687	Rotating Beacon, Class 1, halogen (beacon light only) w/ magnetic mounting		<b>\$177.00</b>
77700-10379	Wire harness needed for installation of Strobe (77700-08686) and Beacon (77700-08687) on <b>ROPS machines ONLY</b>		<b>\$34.00</b>
RD829-53870	Switch for Strobe (77700-08686) and Beacon (77700-08687) <b>ROPS machines ONLY</b>		<b>\$95.00</b>



## Model Upgrade K Series U48-5

### U48-5 Tight Tail Swing Hydraulic Excavator

#### FEATURES

Eco Plus System  
Auto Idler  
Rubber Or Steel Track Models  
4-Post ROPS/OPG (Top Guard Level I) Canopy or  
Air Conditioned Cab  
Suspension Seat  
Kubota 3 Hydraulic Pump Load Sensing System  
1 Gear, 2 Variable Displacement Pumps  
All Controls Hydraulic Pilot Controls  
Two Operating Pattern Selection System  
Accumulator  
Digital Control Panel  
Attachment Flow Presets, Service Alerts  
Standard Front Dozer Blade w/ Float  
Optional Float Angle Blade w/ Bolt-on Cutting Edge  
360 Degree Full Rotation  
70 Degree Left, 53 Degree Right Boom Swing  
17.2 gpm Adjustable Auxiliary Hydraulics Port 1  
Auxiliary Hydraulics Diverter Valve  
9.8 gpm Adjustable Auxiliary Hydraulics Port 2 Option  
Thumb Bracket And Relief Valves  
Five Second Quick Preheat System  
Key Switch Stop System  
Half Pitch Rubber Tracks  
Self-Bleed Fuel System  
Auto-Downshift Two Speed Travel System  
Swivel Negative Brake  
Travel Negative Brake  
Third Line

#### BASIC UNITS

U48-5R1, Rubber Tracks, ROPS/OPG (Top Guard, Level I) Canopy, Dozer Blade, Dipper Arm, Counterweight  
U48-5R1P, Rubber Tracks, ROPS/OPG (Top Guard, Level I) Canopy, Dozer Blade, Dipper Arm, Counterweight, SP2  
U48-5R1A, Rubber Tracks, ROPS/OPG (Top Guard, Level I) Canopy, Angle Dozer Blade, Dipper Arm, Counterweight  
U48-5R1AP, Rubber Tracks, ROPS/OPG (Top Guard, Level I) Canopy, Angle Dozer Blade, Dipper Arm, Counterweight, SP2  
U48-5R3, Rubber Tracks, A/C ROPS/OPG (Top Guard, Level I) Cab, Dozer Blade, Dipper Arm, Counterweight  
U48-5R3P, Rubber Tracks, A/C ROPS/OPG (Top Guard, Level I) Cab, Dozer Blade, Dipper Arm, Counterweight, SP2  
U48-5R3A, Rubber Tracks, A/C ROPS/OPG (Top Guard, Level I) Cab, Angle Dozer Blade, Dipper Arm, Counterweight  
U48-5R3AP, Rubber Tracks, A/C ROPS/OPG (Top Guard, Level I) Cab, Angle Dozer Blade, Dipper Arm, Counterweight, SP2  
U48-5S3A, Steel Tracks, A/C ROPS/OPG (Top Guard, Level I) Cab, Angle Dozer Blade, Dipper Arm, Counterweight  
U48-5S3AP, Steel Tracks, A/C ROPS/OPG (Top Guard, Level I) Cab, Angle Dozer Blade, Dipper Arm, Counterweight, SP2

#### ENGINE

D1803-CR-TE5-BH3 Tier 4 Final Diesel Engine  
4 Cylinder, 4 Cycle  
40.4 Gross HP @ 2200 rpm (SAE J1995)  
38.9 Net HP @ 2200 rpm (SAE J1349)

#### OPERATIONAL DIMENSIONS

Max Digging Depth	10' 8"
Max Digging Radius @ Ground Level	18' 4"
Max Vertical Digging Depth	4' 5"
Max Dumping Height	12' 9"

#### STANDARD DOZER BLADE DIMENSIONS

Width	77"
Height	16"
Lift Above Ground	17"
Drop Below Ground	16"

#### PERFORMANCE

Digging Force @ Bucket (K7919)	9,304 lbs.
Digging Force @ Dipper Arm	5,304 lbs.
Travel Speed (Low/High)	1.7/3.0 mph
Climbing Ability	36% / 20°
Lift Capacity	2,640 lbs.
<ul style="list-style-type: none"> <li>Over Front</li> <li>Blade Grounded</li> <li>4.0 Ft. Load Point Height</li> <li>12.0 Ft. Load Radius</li> </ul>	

#### DIMENSIONS AND OPERATING WEIGHT

U48-5R1, Rubber Tracks, ROPS/OPG (Top Guard Level I) Canopy, Dozer Blade, Dipper Arm, Counterweight

Overall Length	17' 7"
Overall Width	6' 5"
Overall Height	8' 4"
Operating Weight*	10,848 lbs.
Ground Clearance	12"

U48-5R3AP, Rubber Tracks, ROPS/OPG (Top Guard Level I) A/C Cab, Angle Dozer Blade, Dipper Arm, Counterweight, SP2

Overall Length	17' 7"
Overall Width	6' 5"
Overall Height	8' 4"
Operating Weight*	11,531 lbs.
Ground Clearance	12"

\* Includes operator's weight, 165 lbs.

# KUBOTA

## Model Upgrade K Series U48-5

ORDER CODE	DESCRIPTION	APPROX. WEIGHT	
<b>STANDARD UNIT U48-5R3AP COMPLETE ORDER AND PRICE</b>			
BASIC UNIT:			
<b>U48-5R3AP</b>	<b>EXCAVATOR BASIC UNIT "SAMPLE BUILD"</b>	12,535	\$66,485.00
With:	Rubber Tracks		
	Air Conditioned ROPS/OPG (Top Guard, Level I) Cab		
	Angle Dozer Blade		
	Dipper arm		
	Counterweight		
	Two Service Ports		
<b>ATTACHMENTS:</b>			
K7915	Quick Coupler	96	\$1,335.00
K7262	Hydraulic Thumb	155	\$3,773.00
K7254	24" 6.3 cu. ft. QA Trenching Bucket	275	\$1,843.00
			<b>\$73,436.00</b>
<b>PART 1 MODEL U48-5 BASIC UNITS</b>			
<b>U48-5R1</b>	<b>Excavator Basic Unit</b>	10,850	+\$18,374.00
With:	Rubber Tracks, 4-Post ROPS/OPG (Top Guard, Level I)		
	Canopy, Dozer Blade, Dipper Arm, Counterweight		
<b>U48-5R1A</b>	<b>Excavator Basic Unit</b>	11,320	+\$21,708.00
With:	Rubber Tracks, 4-Post ROPS/OPG (Top Guard, Level I)		
	Canopy, Angle Blade, Dipper Arm, Counterweight		
<b>U48-5R1AP</b>	<b>Excavator Basic Unit</b>	11,400	+\$23,623.00
With:	Rubber Tracks, 4-Post ROPS/OPG (Top Guard, Level I)		
	Canopy, Angle Blade, Dipper Arm, Counterweight, SP2		
<b>U48-5R3</b>	<b>Excavator Basic Unit</b>	11,060	+\$25,832.00
With:	Rubber Tracks, A/C ROPS/OPG (Top Guard, Level I) Cab,		
	Dozer Blade, Dipper Arm, Counterweight		
<b>U48-5R3P</b>	<b>Excavator Basic Unit</b>	11,100	+\$27,738.00
With:	Rubber Tracks, A/C ROPS/OPG (Top Guard, Level I) Cab,		
	Dozer Blade, Dipper Arm, Counterweight, SP2		
<b>U48-5R3A</b>	<b>Excavator Basic Unit</b>	11,530	+\$29,167.00
With:	Rubber Tracks, A/C ROPS/OPG (Top Guard, Level I) Cab,		
	Angle Blade, Dipper Arm, Counterweight		
<b>U48-5R3AP</b>	<b>Excavator Basic Unit</b>	12,115	+\$31,074.00
With:	Rubber Tracks, A/C ROPS/OPG (Top Guard, Level I) Cab,		
	Angle Blade, Dipper Arm, Counterweight, SP2		
<b>U48-5S3AP</b>	<b>Excavator Basic Unit</b>	12,700	+\$32,858.00
With:	Steel Tracks, A/C ROPS/OPG (Top Guard, Level I) Cab,		
	Angle Blade, Dipper Arm, Counterweight, SP2		

# KUBOTA

## K Series U48-5

ORDER CODE	DESCRIPTION	APPROX. WEIGHT	
<b>PART 2</b>	<b>QUICK ATTACH BUCKETS</b>		
K7915	QUICK COUPLER Includes 2 mounting pins, 1 locking pin and hardware.	96	\$1,334.00
K7916	BUCKET HANGERS Set of 2 ear blanks. Converts buckets to quick coupler style. Modification to match bucket contour required.	97	\$779.00
K7252	12" 2.13 cu.ft. QA TRENCHING BUCKET	130	\$1,361.00
K7253	18" 3.19 cu.ft. QA TRENCHING BUCKET	240	\$1,537.00
K7263	18" 3.19 cu.ft. QA TRENCHING BUCKET (WITHOUT TEETH)	1	\$1,537.00
K7254	24" 4.25 cu.ft. QA TRENCHING BUCKET	275	\$1,842.00
K7264	24" 4.25 cu.ft. QA TRENCHING BUCKET (WITHOUT TEETH)	245	\$1,842.00
K7255	30" 5.31 cu.ft. QA TRENCHING BUCKET	180	\$2,031.00
K7256	36" 6.64 cu.ft. QA GRADING BUCKET	270	\$1,675.00
K7474A	36" BOLT ON CUTTING EDGE	36	\$228.00
K7926	36 inch 3.48 cu. ft. CEMETARY BUCKET	265	\$2,027.00
<b>PART 3</b>	<b>ATTACHMENTS</b>		
K7262	HYDRAULIC THUMB KIT FOR U48-5 K7915 Quick Coupler required	155	\$3,772.00
K7283	KEYLESS START KIT	1	\$214.00
K7284	REARVIEW CAMERA	1	\$377.00
K7286	AIR SUSPENSION SEAT KIT (CAB ONLY)	86	\$917.00
K7281	FRONT GUARD KIT (CAB ONLY)	66	\$4,379.00
K9943A	RETRACTABLE SEAT BELT OPTION (3") As required in some states for OSHA compliance.	3	\$101.00
K7479	CAB MIRROR KIT Includes 2 side mirrors, 1 for each side, 1 rear mirror, and attaching hardware	11	\$316.00
K7277	TRAVEL ALARM KIT Emits an audible signal when traveling forward or reverse.	6	\$193.00
<b>PART 4</b>	<b>ROPS / OPG (Top Guard, Level I)</b>		
K7271	REPLACEMENT 4-POST ROPS / OPG (Top Guard, Level I) CANOPY	6	\$1,691.00
K7274	REPLACEMENT ROPS / OPG (Top Guard, Level I) CAB	6	\$7,198.00

# KUBOTA

## K Series U48-5

ORDER CODE	DESCRIPTION	APPROX. WEIGHT	
<b>PART 5</b>	<b>KubotaNOW TELEMATICS SERVICE (each order will require the DCU6700 modem and model specific wiring harness)</b> <b><i>KubotaNOW Telematics Service includes a three (3) year term</i></b>		
DCU6700	AT&T Telematics Modem	1	\$443.00
K6704A	Excavator Telematics Wiring Harness	2	\$159.00
<b>PART 6</b>	<b>AVAILABLE FROM PARTS</b>		
	77700-04753B Radio Kit AM/FM/ WB/ AUX (for Cab models Only)		
	77700-04754A Radio Kit AM/FM/ WB/ AUX/ USB/ iPod/ SAT (for Cab models ONLY) 77700-04755B Radio Kit		\$307.00
	70000-00297 Block Heater Kit		\$240.00
	77700-08686 Strobe Light, Class 2, LED, flashing strobe w/ vacuum magnetic mounting		\$177.00
	77700-08687 Rotating Beacon, Class 1, Halogen (beacon light only) w/ magnetic mounting		\$34.00
	77700-10379 Wire harness needed for installation of Strobe (77700-08686) and Beacon (77700-08687) <b>on ROPS machines ONLY</b>		\$9 5.00
	RD829-53870 Switch for Strobe (77700-08686) and Beacon (77700-08687) <b>ROPS</b> Versions		
	77700-12872 Tethered Fuel Cap		

## Model Upgrade K Series U55-5

### U55-5 Tight Tail Swing Hydraulic Excavator

#### FEATURES

Eco Plus System  
Auto Idler  
Rubber Or Steel Track Models  
4-Post ROPS/OPG (Top Guard Level I) Canopy or  
Air Conditioned Cab  
Suspension Seat  
Kubota 3 Hydraulic Pump Load Sensing System  
1 Gear, 2 Variable Displacement Pumps  
All Controls Hydraulic Pilot Controls  
Two Operating Pattern Selection System  
Accumulator  
Digital Control Panel  
Attachment Flow Presets, Service Alerts  
Standard Front Dozer Blade w/ Float  
Optional Float Angle Blade w/ Bolt-on Cutting Edge  
360 Degree Full Rotation  
70 Degree Left, 55 Degree Right Boom Swing  
19.8 gpm Adjustable Auxiliary Hydraulics Port 1  
Auxiliary Hydraulics Diverter Valve  
9.8 gpm Adjustable Auxiliary Hydraulics Port 2 Option  
Thumb Bracket And Relief Valves  
Five Second Quick Preheat System  
Key Switch Stop System  
Half Pitch Rubber Tracks  
Self-Bleed Fuel System  
Auto-Downshift Two Speed Travel System  
Swivel Negative Brake  
Travel Negative Brake  
Third Line

#### BASIC UNITS

U55-5R1, Rubber Tracks, ROPS/OPG (Top Guard,  
Level I) Canopy, Dozer Blade, Dipper Arm, Counterweight  
U55-5R1A, Rubber Tracks, ROPS/OPG (Top Guard, Level  
I) Canopy, Angle Dozer Blade, Dipper Arm, Counterweight  
U55-5R1AP, Rubber Tracks, ROPS/OPG (Top Guard,  
Level I) Canopy, Angle Dozer Blade, Dipper Arm,  
Counterweight, SP2  
U55-5R3, Rubber Tracks, A/C ROPS/OPG (Top Guard,  
Level I) Cab, Dozer Blade, Dipper Arm, Counterweight  
U55-5R3P, Rubber Tracks, A/C ROPS/OPG (Top Guard,  
Level I) Cab, Dozer Blade, Dipper Arm, Counterweight, SP2  
U55-5R3A, Rubber Tracks, A/C ROPS/OPG (Top Guard,  
Level I) Cab, Angle Dozer Blade, Dipper Arm,  
Counterweight  
U55-5R3AP, Rubber Tracks, A/C ROPS/OPG (Top Guard,  
Level I) Cab, Angle Dozer Blade, Dipper Arm,  
Counterweight, SP2  
U55-5S3AP, Steel Tracks, A/C ROPS/OPG (Top Guard,  
Level I) Cab, Angle Dozer Blade, Dipper Arm,  
Counterweight, SP2

#### ENGINE

V2607 Kubota DI CRS Tier 4 Final Diesel Engine  
4 Cylinder, 4 Cycle  
47.6 Gross HP @ 2200 rpm (SAE J1995)  
45.2 Net HP @ 2200 rpm (SAE J1349)

#### OPERATIONAL DIMENSIONS

Max Digging Depth	11' 10.3"
Max Digging Radius @ Ground Level	19' 6.1"
Max Vertical Digging Depth	4' 11.6"
Max Dumping Height	13' 2.3"

#### STANDARD DOZER BLADE DIMENSIONS

Width	77.2"
Height	16.1"
Lift Above Ground	17.3"
Drop Below Ground	16.1"

#### PERFORMANCE

Digging Force @ Bucket (K7919)	11,177 lbs.
Digging Force @ Dipper Arm	6,261 lbs.
Travel Speed (Low/High)	1.8/3.1 mph
Climbing Ability	36% / 20°
Lift Capacity	3,700 lbs.
<ul style="list-style-type: none"> <li>Over Front</li> <li>Blade Grounded</li> <li>4.0 Ft. Load Point Height</li> <li>12.0 Ft. Load Radius</li> </ul>	

#### DIMENSIONS AND OPERATING WEIGHT

U55-4R1, Rubber Tracks, ROPS/OPG (Top Guard Level  
I) Canopy, Dozer Blade, Dipper Arm, Counterweight

Overall Length	18' 1.3"
Overall Width	6' 5.2"
Overall Height	8' 4.4"
Operating Weight*	11,915 lbs.
Ground Clearance	12' 0.2"

U55-4R3AP, Rubber Tracks, ROPS/OPG (Top Guard  
Level I) A/C Cab, Angle Dozer Blade, Dipper Arm,  
Counterweight, SP2

Overall Length	18' 1.3"
Overall Width	6' 5.2"
Overall Height	8' 4"
Operating Weight*	12,535 lbs.
Ground Clearance	12.0.2"

\* Includes operator's weight, 165 lbs.

# KUBOTA

## Model Upgrade K Series U55-5

ORDER CODE	DESCRIPTION	APPROX. WEIGHT		
PART 1	MODEL U55 BASIC UNITS			
U55-5R1	Excavator Basic Unit	12,535	+\$24,360.00	
With:	Rubber Tracks, 4-Post ROPS/OPG (Top Guard, Level I) Canopy, Dozer Blade, Dipper Arm, Counterweight			
U55-5R1A	Excavator Basic Unit	12,535	+\$27,695.00	
With:	Rubber Tracks, 4-Post ROPS/OPG (Top Guard, Level I) Canopy, Angle Blade, Dipper Arm, Counterweight			
U55-5R1AP	Excavator Basic Unit	12,535	+\$29,601.00	
With:	Rubber Tracks, 4-Post ROPS/OPG (Top Guard, Level I) Canopy, Angle Blade, Dipper Arm, Counterweight, SP2			
U55-5R3	Excavator Basic Unit	12,535	+\$31,820.00	
With:	Rubber Tracks, A/C ROPS/OPG (Top Guard, Level I) Cab, Dozer Blade, Dipper Arm, Counterweight			
U55-5R3P	Excavator Basic Unit	12,535	+\$33,726.00	
With:	Rubber Tracks, A/C ROPS/OPG (Top Guard, Level I) Cab, Dozer Blade, Dipper Arm, Counterweight, SP2			
U55-5R3A	Excavator Basic Unit	12,535	+\$35,153.00	
With:	Rubber Tracks, A/C ROPS/OPG (Top Guard, Level I) Cab, Angle Blade, Dipper Arm, Counterweight			
U55-5R3AP	Excavator Basic Unit	12,535	+\$37,060.00	
With:	Rubber Tracks, A/C ROPS/OPG (Top Guard, Level I) Cab, Angle Blade, Dipper Arm, Counterweight, SP2			
U55-5S3AP	Excavator Basic Unit	12,700	+\$38,847.00	
With:	Steel Tracks, A/C ROPS/OPG (Top Guard, Level I) Cab, Angle Blade, Dipper Arm, Counterweight, SP2			
PART 2	Pin Grabber Attachments & Buckets			
K6131	PIN GRABBER COUPLER - TEMPORARILY CLOSED	188	\$4,97400	
K6152	U55-5 PIN GRABBER COMPLETION KIT	33	\$1,070.00	
	PIN GRABBER COUPLER- TEMPORARILY CLOSED			
K6124	Order if Pin Grabber Coupler is ordered U55-5 HYDRAULIC THUMB - PIN GRABBER - TEMPORARILY CLOSED Order hydraulic thumb if Pin Grabber Coupler is ordered	153	\$3,245.00	
	Pin On Buckets [Pins included with Bucket]			
K6163	12" Pin On TRENCHING BUCKET	K1K500A24	249	\$1,974.00
K6164	18" Pin On TRENCHING BUCKET	K1K582A32	295	\$2,08100
K6164C	18" Pin On TRENCHING BUCKET w/o Teeth	K1K582A32	295	\$2,081.00
K6165	24" Pin On TRENCHING BUCKET	K1K767A00	338	\$2,324.00

# KUBOTA

## K Series U55-5

ORDER CODE	DESCRIPTION	APPROX. WEIGHT	
K6165C	24" Pin On TRENCHING BUCKET w/o Teeth	338	\$2,324.00
K6166	30" Pin On TRENCHING BUCKET	365	\$2,541.00
K6167	36" Pin On TRENCHING BUCKET	500	\$2,784.00
K6134	36" Pin On GRADING BUCKET	230	\$2,071.00
K6136	48" Pin On DRAINAGE BUCKET	296	\$2,379.00
<b>PART 3</b>	<b>QUICK ATTACH BUCKETS</b>		
K7915	QUICK COUPLER Includes 2 mounting pins, 1 locking pin and hardware.	96	\$1,334.00
K7916	BUCKET HANGERS Set of 2 ear blanks. Converts buckets to quick coupler style. Modification to match bucket contour required.	97	\$779.00
K7917	12 inch 3.00 cu. ft. TRENCHING BUCKET [Bucket teeth and thumb tines do not mesh]	226	\$1,513.00
K7918	18 inch 4.50 cu. ft. TRENCHING BUCKET The K7918 bucket has four teeth. The K7937B thumb tines contact the end of the teeth and do not mesh between the teeth.	295	\$1,675.00
K7918C	18 inch 4.50 cu. ft. TRENCHING BUCKET This is the same bucket as K7918 (WITHOUT shanks for teeth)	285	\$1,676.00
K7919	24 inch 6.30 cu. ft. TRENCHING BUCKET	295	\$1,865.00
K7919C	24 inch 6.30 cu. ft. TRENCHING BUCKET This is the same bucket as K7919 (WTHOUT shanks for teeth)	325	\$1,865.00
K7920	30 inch 8.00 cu. ft. TRENCHING BUCKET	338	\$2,044.00
K7921	36 inch 8.00 cu. ft. TRENCHING BUCKET	368	\$2,838.00
K7926	36 inch 3.48 cu. ft. CEMETARY BUCKET	265	\$2,027.00
K7922A	36 inch 6.64 cu. ft. DRAINAGE BUCKET (RETAIL ONLY) Pre-drilled for bolt on cutting edge.	270	\$1,679.00
K7922	36 inch 6.64 cu. ft. DRAINAGE BUCKET (PLANNED ONLY) Pre-drilled for bolt on cutting edge.	270	\$2,000.00
K7474A	Bolt On Cutting Edge for K7922A 36" DRAINAGE BUCKET	36	\$228.00
K7924A	48 inch 8.50 cu. ft. GRADING BUCKET (RETAIL ONLY) Pre-drilled for bolt on cutting edge. Not authorized for use on models with K7937B thumb	400	\$2,399.00
K7924	48 inch 8.50 cu. ft. GRADING BUCKET (PLANNED ONLY) Pre-drilled for bolt on cutting edge. Not authorized for use on models with K7937B thumb	350	\$2,495.00
K7878A	Bolt On Cutting Edge for K7924A 48" GRADING BUCKET	51	\$305.00

# KUBOTA

## K Series U55-5

ORDER CODE	DESCRIPTION	APPROX. WEIGHT	
<b>PART 4</b>	<b>ATTACHMENTS</b>		
K7937B	HYDRAULIC THUMB KIT (K7915 Quick Coupler Required)	195	\$3,293.00
K7932	FROST RIPPER	315	\$1,689.00
K7270	CANOPY WORK LIGHT KIT	6	\$166.00
K7278	TRAVEL ALARM KIT Emits an audible signal when traveling forward or reverse.	6	\$193.00
K7280	STEEL CRAWLER KIT Converts tracks from rubber to steel	439	\$5,842.00
K7440	BOLT ON RUBBER PAD KIT (400 mm, 15.7")	250	\$4,410.00
<b>PART 5</b>	<b>ROPS / OPG (Top Guard, Level I)</b>		
K7273	REPLACEMENT 4-POST ROPS / OPG (Top Guard, Level I) CANOPY	6	\$1,691.00
K7276	REPLACEMENT ROPS / OPG (Top Guard, Level I) CAB The K7276 cab is configured as a replacement for damaged factory mounted cabs. It does not include cabin electrical wiring, wiper motor, air conditioner, heater, or defroster. Refer to illustrated parts list to order these components.	1	\$7,198.00
K7479	CAB MIRROR KIT Includes 2 side mirrors, one for each side, 1 rear mirror, and attaching hardware	11	\$316.00
K9943A	RETRACTABLE SEAT BELT OPTION (3") As required in some states for OSHA compliance.	3	\$101.00
K7283	KEYLESS START KIT	1	\$214.00
K7284	REARVIEW CAMERA	1	\$377.00
K7286	AIR SUSPENSION SEAT KIT (Cab Only)	86	\$917.00
K7281	FRONT GUARD KIT (Cab Only)	66	\$4,379.00
<b>PART 5</b>	<b>KubotaNOW TELEMATICS SERVICE (each order will require the DCU6700 modem and model specific wiring harness) <i>KubotaNOW Telematics Service includes a three (3) year term</i></b>		
DCU6700	AT&T Telematics Modem	1	\$443.00
K6704A	Excavator Telematics Wiring Harness	2	\$159.00



# KUBOTA

## K Series U55-5

ORDER CODE	DESCRIPTION	FACTORY NUMBER	APPROX. WEIGHT
<b>PART 6</b>	<b>AVAILABLE FROM PARTS</b>		
	70000-00776 Block Heater Kit		
	77700-04753B Radio Kit AM/FM/ WB/ AUX (for Cab models Only)		
	77700-04754A Radio Kit AM/FM/ WB/ AUX/ USB/ iPod/ SAT (for Cab models ONLY) 77700-04755B Radio Kit		\$307.00
	77700-08686 Strobe Light, Class 2, LED, flashing strobe w/ vacuum magnetic mounting		\$240.00
	77700-08687 Rotating Beacon, Class 1, Halogen (beacon light only) w/ magnetic mounting		\$177.00
	77700-10379 Wire harness needed for installation of Strobe (77700-08686) and Beacon (77700-08687) <u>on ROPS machines ONLY</u>		\$34.00
	RD829-53870 Switch for Strobe (77700-08686) and Beacon (77700-08687) ROPS Versions		\$95.00
	77700-12872 Tethered Fuel Cap		\$630.00

# AP-EA20 Series Excavator Auger

[RETURN TO INDEX](#)

6-30 gpm

AVAILABLE FOR: KX71 / KX018-4 / KX030 / KX033 / KX040  
KX057 / KX080 / U17 / U25 / U27 / U35 / U48 / U55



Choose Excavator Mount  
Hydraulically Driven Planetary Gearbox  
Hydraulically Reversible  
3 Motor Options: 6-15 gpm, 10-20 gpm, 15-30 gpm  
Output Shaft: 2" Hex  
Auger Teeth: Forged, Individually Replaceable  
40 Degree Angle Installed on Flat Side  
50 Degree Angle Installed on Angled Side  
9" - 4 teeth, 12" - 4, 15" - 5, 18" - 6,  
24" - 8, 30" - 10, 36" - 12  
Tree Augers: 24" - 9, 30" - 11, 36" - 13  
Auger Pipe: 2 1/2" ID  
Auger Flighting Thickness: 5/16"  
Auger Length: 48"  
Rock Augers: 6", 9", 12", 15", 18", 24"  
Torque: Up to 2620 ft/lb @ 3000 PSI\*

Dirtworking

MODEL NUMBER	DESCRIPTION	APPROX. MACHINE WEIGHT	SHIPPING WEIGHT	PRICE
AP-EA20	<b>20 SERIES HYDRAULIC POST HOLE DIGGER</b> No Mount	42#	116#	\$ 567
AP-EA20-01	<b>20 SERIES HYDRAULIC POST HOLE DIGGER</b> for use with KX018-4 and U17** (317-249A)	94#	168#	\$ 863
AP-EA20-02	<b>20 SERIES HYDRAULIC POST HOLE DIGGER</b> for use with U25 and U27 (317-248A)	115#	189#	\$ 965
AP-EA20-03	<b>20 SERIES HYDRAULIC POST HOLE DIGGER</b> for use with KX033, KX040, KX71, KX91, and U35 (317-247A)	124#	198#	\$ 957
AP-EA20-04	<b>20 SERIES HYDRAULIC POST HOLE DIGGER</b> for use with KX057, U48, and U55 (317-250A)	179#	253#	\$ 1,109
AP-EA20-05	<b>20 SERIES HYDRAULIC POST HOLE DIGGER</b> for use with KX080 (317-251A)	206#	280#	\$ 1,209
AP-EA20-09	<b>20 SERIES HYDRAULIC POST HOLE DIGGER</b> with Pin Grabber Mount For KX057 (317-437A)	288#	362#	\$ 1,717
AP-EA20-10	<b>20 SERIES HYDRAULIC POST HOLE DIGGER</b> with Pin Grabber Mount For KX080 (317-438A)	320#	394#	\$ 1,873
<b>ADD OPTION NUMBER</b>	<b><u>YOU MAY CHOOSE A HOSE KIT</u></b>			
-20	32" Hose Kit for U27	3#	3#	\$ 163
-21	54" Hose Kit for KX033, KX040, KX71, KX91, U35, U55, and KX057	9#	9#	\$ 370
-22	74" Hose Kit for KX080	3#	3#	\$ 370
-23	48" Hose Kit for KX018-14 and U17	3#	3#	\$ 196
<b>ADD OPTION NUMBER</b>	<b><u>YOU MAY CHOOSE A TRANSPORT CRADLE</u></b>			
-31	Cradle	28#	28#	\$ 179
<b>ADD OPTION NUMBER</b>	<b><u>YOU MUST CHOOSE A MOTOR</u></b>			
-35	6-15 gpm	89#	89#	\$ 1,977
-36	10-20 gpm	89#	89#	\$ 1,957
-37	15-30 gpm	91#	91#	\$ 1,977

\*Torque based on theoretical 100% efficiency for comparison purposes only.

\*\* A maximum auger size of 24" is recommended with the KX018-4/U17 mount.  
Excavator stability and digging performance will suffer with augers larger than 24".

See "Auger Options" on page 17

See "SA/EA Accessories" on page 18

# AP-EA35 Series Excavator Auger

[RETURN TO INDEX](#)

15-30 gpm

AVAILABLE FOR: KX030 / KX033 / KX057/ KX71 / KX080  
U25 / U27 / U35 / U48 / U55


Choose Excavator Mount  
Hydraulically Driven Planetary Gearbox  
Hydraulically Reversible  
Output Shaft: 2" Hex or 2<sup>9</sup>/<sub>16</sub>" OD Round  
Auger Teeth: Forged, Individually Replaceable  
40 Degree Angle Installed on Flat Side  
50 Degree Angle Installed on Angled Side  
9" - 4 teeth, 12" - 4, 15" - 5, 18" - 6,  
24" - 8, 30" - 10, 36" - 12  
Tree Augers: 24" - 9, 30" - 11, 36" - 13  
Auger Pipe: 2<sup>1</sup>/<sub>2</sub>" ID  
Auger Flighting Thickness: 5/16"  
Auger Length: 48"  
Rock Augers: 6", 9", 12", 15", 18", 24"  
Pilot: Cast Steel, 3 Drill Points  
Torque: Up to 2732 ft/lb @ 3000 PSI\*

Dirtworking

MODEL NUMBER	DESCRIPTION	APPROX. MACHINE WEIGHT	SHIPPING WEIGHT	PRICE
AP-EA35	<b>35 SERIES HYDRAULIC POST HOLE DIGGER</b> No Mount	414#	432#	\$ 875
AP-EA35-01	<b>35 SERIES HYDRAULIC POST HOLE DIGGER</b> For use with KX018 and U17** (317-249A)	466#	497#	\$ 1,172
AP-EA35-02	<b>35 SERIES HYDRAULIC POST HOLE DIGGER</b> For use with U25 and U27 (317-248A)	471#	503#	\$ 1,273
AP-EA35-03	<b>35 SERIES HYDRAULIC POST HOLE DIGGER</b> For use with KX033, KX040, KX71, KX91, and U35 (317-247A)	496#	524#	\$ 1,265
AP-EA35-04	<b>35 SERIES HYDRAULIC POST HOLE DIGGER</b> For use with KX057, U48, and U55 (317-250A)	551#	578#	\$ 1,417
AP-EA35-05	<b>35 SERIES HYDRAULIC POST HOLE DIGGER</b> For use with KX080 (317-251A)	578#	599#	\$ 1,517
AP-EA35-09	<b>35 SERIES HYDRAULIC POST HOLE DIGGER</b> with Pin Grabber Mount for KX057 (317-437A)	586#	643#	\$ 2,026
AP-EA35-10	<b>35 SERIES HYDRAULIC POST HOLE DIGGER</b> with Pin Grabber Mount for KX080 (317-438A)	618#	664#	\$ 2,181
<b>ADD OPTION NUMBER</b>	<b><u>YOU MAY CHOOSE A HOSE KIT</u></b>			
-20	32" Hose Kit for U27	3#	3#	\$ 163
-21	54" Hose Kit for KX033, KX040, KX71, KX91, U35, U55, and KX057	3#	3#	\$ 370
-22	74" Hose Kit for KX080	3#	3#	\$ 370
-23	48" Hose Kit for KX018 and U17	3#	3#	\$ 196
<b>ADD OPTION NUMBER</b>	<b><u>YOU MAY CHOOSE A TRANSPORT CRADLE</u></b>			
-31	Cradle	28#	28#	\$ 196
<b>ADD OPTION NUMBER</b>	<b><u>YOU MUST CHOOSE A MOTOR</u></b>			
-35	Hydraulic Motor/Gearbox: 2-9/16" Round			\$ 2,093
-36	Hydraulic Motor/Gearbox: 2" Hex Shaft			\$ 2,093

\*Torque based on theoretical 100% efficiency for comparison purposes only.

\*\* A maximum auger size of 24" is recommended with the KX018/U17 mount.  
Excavator stability and digging performance will suffer with augers larger than 24".

See "Auger Options" on page 17

See "SA/EA Accessories" on page 18

# Auger Options

[RETURN TO INDEX](#)

Dirtworking

ADD OPTION NUMBER	<b>FOR 2<sup>3</sup>/<sub>16</sub>" ROUND OUTPUT SHAFTS - for AP-EA35 MODEL ONLY</b>		APPROX. MACHINE WEIGHT	SHIPPING WEIGHT	PRICE
-51	9" Double Flight Auger	(317-096A)	78#	78#	\$ 670
-52	12" Double Flight Auger	(317-099A)	113#	113#	\$ 762
-53	15" Double Flight Auger	(317-102A)	116#	116#	\$ 974
-54	18" Double Flight Auger	(317-105A)	135#	135#	\$ 1,072
-55	24" Double Flight Auger	(317-108A)	206#	206#	\$ 1,255
-56	24" Tree Auger	(317-111A)	209#	209#	\$ 1,145
-57	30" Double Flight Auger	(317-114A)	224#	224#	\$ 1,844
-58	30" Tree Auger	(317-117A)	228#	228#	\$ 1,722
-59	36" Double Flight Auger	(317-120A)	280#	280#	\$ 2,207
-60	36" Tree Auger	(317-123A)	289#	289#	\$ 2,091
-76	6" Rock Auger	(317-281A)	60#	60#	\$ 1,349
-77	9" Hub Rock Auger	(317-268A)	95#	95#	\$ 1,683
-78	12" Hub Rock Auger	(317-269A)	116#	116#	\$ 2,077
-79	15" Hub Rock Auger	(317-270A)	149#	149#	\$ 2,472
-80	18" Hub Rock Auger	(317-271A)	205#	205#	\$ 2,876
-81	24" Hub Rock Auger	(317-272A)	256#	256#	\$ 3,613
-87	2" Puff Auger	(317-319A)	32#	32#	\$ 642
ADD OPTION NUMBER	<b>FOR 2" HEX OUTPUT SHAFTS - FOR AP-EA20 and AP-EA35 MODELS</b>				
-40	6" Double Flight Auger	(317-273A)	39#	39#	\$ 641
-41	9" Double Flight Auger	(317-095A)	78#	78#	\$ 670
-42	12" Double Flight Auger	(317-098A)	113#	113#	\$ 762
-43	15" Double Flight Auger	(317-101A)	116#	116#	\$ 974
-44	18" Double Flight Auger	(317-104A)	135#	135#	\$ 1,072
-45	24" Double Flight Auger	(317-107A)	206#	206#	\$ 1,255
-46	24" Tree Auger	(317-110A)	209#	209#	\$ 1,145
-47	30" Double Flight Auger	(317-113A)	224#	224#	\$ 1,844
-48	30" Tree Auger	(317-116A)	228#	228#	\$ 1,722
-49	36" Double Flight Auger	(317-119A)	280#	280#	\$ 2,207
-50	36" Tree Auger	(317-122A)	289#	289#	\$ 2,091
-70	6" Rock Auger	(317-280A)	60#	60#	\$ 1,349
-71	9" Hex Rock Auger	(317-263A)	95#	95#	\$ 1,683
-72	12" Hex Rock Auger	(317-264A)	116#	116#	\$ 2,077
-73	15" Hex Rock Auger	(317-265A)	149#	149#	\$ 2,472
-74	18" Hex Rock Auger	(317-266A)	205#	205#	\$ 2,876
-75	24" Hex Rock Auger	(317-267A)	256#	256#	\$ 3,613
-86	2" Puff Auger	(317-318A)	32#	32#	\$ 642

PART NUMBER	DESCRIPTION	APPROX. WEIGHT	SHIPPING WEIGHT	PRICE
<b><u>AUGER EXTENSIONS</u></b>				
<b>317-129A</b>	2" Hex - 24" Auger Extension - SA20, SA35, EA20, EA35	34#	34#	\$ 716
<b>317-131A</b>	2" Hex - 48" Auger Extension - SA20, SA35, EA20, EA35	58#	58#	\$ 1,041
<b>317-133A</b>	2 <sup>9</sup> / <sub>16</sub> " Round - 24" Auger Extension - SA35, EA35	25#	25#	\$ 696
<b>317-135A</b>	2 <sup>9</sup> / <sub>16</sub> " Round - 48" Auger Extension - SA35, EA35	37#	37#	\$ 883
<b><u>ROCK HEADS</u></b>				
<b>317-274A</b>	6" Bolt-on Rock Head - SA20, SA35, EA20, EA35	24#	24#	\$ 762
<b>317-275A</b>	9" Bolt-on Rock Head - SA20, SA35, EA20, EA35	36#	36#	\$ 934
<b>317-276A</b>	12" Bolt-on Rock Head - SA20, SA35, EA20, EA35	43#	43#	\$ 1,013
<b>317-277A</b>	15" Bolt-on Rock Head - SA20, SA35, EA20, EA35	47#	47#	\$ 1,087
<b>317-278A</b>	18" Bolt-on Rock Head - SA20, SA35, EA20, EA35	62#	62#	\$ 1,148
<b>317-279A</b>	24" Bolt-on Rock Head - SA20, SA35, EA20, EA35	79#	79#	\$ 1,346
<b><u>SKID STEER MOUNT</u></b>				
<b>317-083A</b>	Skid Steer Mount for EA35	196#	196#	\$ 914
<b>317-215A</b>	Skid Steer Mount for EA20	196#	196#	\$ 914
<b><u>EXCAVATOR MOUNTS</u></b>				
<b>317-249A</b>	KX018/U17 Mount	52#	52#	\$ 296
<b>317-248A</b>	U25/U27 Mount	73#	73#	\$ 398
<b>317-247A</b>	KX033/KX040/KX71/KX91/U35 Mount	82#	82#	\$ 389
<b>317-250A</b>	KX057/U48/U55 Mount	137#	137#	\$ 541
<b>317-251A</b>	KX080 Mount	164#	164#	\$ 642
<b><u>PIN GRABBER EXCAVATOR MOUNTS</u></b>				
<b>317-437A</b>	KX057 Mount	172#	172#	\$ 1,150
<b>317-438A</b>	KX080 Mount	204#	204#	\$ 1,305

# AP-PC Series Plate Compactor

[RETURN TO INDEX](#)

Dirtworking

AVAILABLE FOR: U35, U48, U55, KX033, KX040, KX057, KX080



Cycles per Min: 2,000  
 4-Function Valve  
 Sealed Bearings  
 Hyd. Flow Req.: PC400: 14 GPM  
                           PC700: 18 GPM  
                           PC1000: 18 GPM  
 Impulse Force: PC400: 4,000 lbs.  
                           PC700: 6,400 lbs.  
                           PC1000: 8,000 lbs.  
 Base Plate Dim: PC400: 13" x 25"  
                           PC700: 18" x 27"  
                           PC1000: 24" x 28"

MODEL NUMBER	DESCRIPTION	APPROX. MACHINE WEIGHT	SHIPPING WEIGHT	PRICE
AP-PC400	PC400 Plate Compactor	500#	545#	\$ 6,827

ADD	<b><u>You MAY Choose a MOUNT</u></b>			
<b><u>OPTION NO.</u></b>				
-01	Fits KX040/U35/KX033, Excavator QA Mount (317-360A)	110#	110#	\$ 701
-02	Fits KX057/U48/U55, Excavator QA Mount (317-361A)	130#	130#	\$ 856
-03	Fits KX057/U48/U55, Pin Grabber Mount (317-454A)	97#	97#	\$ 877

MODEL NUMBER	DESCRIPTION	APPROX. MACHINE WEIGHT	SHIPPING WEIGHT	PRICE
AP-PC700	PC700 Plate Compactor	606#	638#	\$ 7,934

ADD	<b><u>You MAY Choose a MOUNT</u></b>			
<b><u>OPTION NO.</u></b>				
-01	Fits KX040, Excavator QA Mount (317-347A)	95#	95#	\$ 631
-02	Fits KX057/U48/U55, Excavator QA Mount (317-348A)	111#	111#	\$ 765
-03	Fits KX080 Excavator, QA Mount (317-406A)	188#	188#	\$ 1,081
-04	Fits KX057/U48/U55, Pin Grabber Mount (317-441A)	110#	110#	\$ 1,102
-05	Fits KX080 Excavator, Pin Grabber Mount (317-444A)	185#	185#	\$ 1,263

MODEL NUMBER	DESCRIPTION	APPROX. MACHINE WEIGHT	SHIPPING WEIGHT	PRICE
AP-PC1000	PC1000 Plate Compactor	1120#	1148#	\$ 9,737

ADD	<b><u>You MAY Choose a MOUNT</u></b>			
<b><u>OPTION NO.</u></b>				
-02	Fits KX057/U48/U55, Excavator QA Mount (317-348A)	111#	111#	\$ 765
-03	Fits KX080 Excavator, QA Mount (317-406A)	188#	188#	\$ 1,081
-04	Fits KX057/U48/U55, Pin Grabber Mount (317-441A)	110#	110#	\$ 1,102
-05	Fits KX080 Excavator, Pin Grabber Mount (317-444A)	185#	185#	\$ 1,263

# AP-SSG20 Series Stump Grinder

[RETURN TO INDEX](#)

Dirtworking



AVAILABLE FOR: SCL1000, U27, KX71, KX033, U35, KX040, KX057, SSV65  
SSV75 (Std Flow Only), SVL75-3 (Std Flow Only)

Fits Compact Loaders, Skid Steers, Compact Excavators  
Optional Mounts  
Direct Drive  
15 Wearsharp® Teeth  
8-21 GPM

MODEL NUMBER	DESCRIPTION		APPROX. MACHINE WEIGHT	SHIPPING WEIGHT		PRICE
AP-SSG2024	<b>20 SERIES STUMP GRINDER</b> 24" Diameter Cutting Wheel		312#	344#	\$	5,628
<b>ADD OPTION NUMBER</b>	<b>MUST CHOOSE A MOUNT OPTION</b>					
-01	Cii Mount (328-187A)		82#	82#	\$	509
-03	SS Mount (328-193A)		168#	168#	\$	758
-04	Compact Excavator Mount (328-189A)		85#	85#	\$	408
-05	Pin Grabber Mount for KX057 (333-202A)		103#	123#	\$	851
	<b>MUST CHOOSE IF -04 OPTION SELECTED</b>					
-41	Bolt-on Mount, U27 (328-195A)		66#		\$	284
-42	Bolt-on Mount, KX71/KX033/U35/KX040 (333-184A)		77#		\$	465
-43	Bolt-on Mount, KX057 (333-185A)		108#		\$	562
	<b>MAY SELECT A HOSE OPTION</b>					
-51	90" CUL Hose Kit		6#		\$	268
-52	100" SS Hose Kit		7#		\$	331
-53	60" Ex Hose Kit		5#		\$	382

**NOTE:** If attaching to a Kubota skid steer, route hydraulic hoses through Kubota's SVL or SSV Hose Stay. Purchase SVL Hose Stay #S6689 or SSV Hose Stay #77700-07225. Refer to the Operator's Manual for more instructions.

# AP-BR Series Hydraulic Breakers

[RETURN TO INDEX](#)

Demolition



AVAILABLE FOR: SSV65 / SSV75 / SVL65-2 / SVL75-3 / SVL97-2  
KX018-4 / KX71 / KX033 / KX040 / KX057 / KX080  
U17 / U27 / U35 / U48 / U55

See Breaker Mount Selection Guide on Next Page

All Breakers come with a Moil point and Chisel point

Tool Diameter (in.):	BR310 – 1.42	BR510 – 2.83
	BR360 – 1.65	BR560 – 3.15
	BR460 – 1.97	BR860 – 3.54
Impact Frequency* (bpm):	BR310 – 1,300-2,500	BR510 – 600-1,800
	BR360 – 1,200-2,600	BR560 – 500-1,700
	BR460 – 1,000-2,000	BR860 – 500-1,700
Oil Flow Range (gpm):	BR310 – 3.9 to 8.7	BR510 – 9.2 to 23.8
	BR360 – 5.3 to 12.7	BR560 – 10.5 to 31.7
	BR460 – 7.9 to 16.6	BR860 – 13.2 to 39.6
Overall Length (in.): w/tool	BR310 – 34.8	BR510 – 49.6
	BR360 – 39.1	BR560 – 57.0
	BR460 – 44.4	BR860 – 65.7

MODEL NUMBER	DESCRIPTION	APPROX. MACHINE WEIGHT	SHIPPING WEIGHT	PRICE
AP-BR310	310 HYDRAULIC BREAKER	189#	222#	\$ 7,430
<b>OPTION</b>	<b>You May Select a Mount or Hose Kit</b>			
-01	Fits B26 Backhoe QA Mount (317-343A)	34#	34#	\$ 444
-02	Fits K008 Excavator Pin-On Mount (317-351A)	22#	22#	\$ 273
-21	BR310 Hose Kit	10#	10#	\$ 107
 AP-BR360	 360 HYDRAULIC BREAKER	 256#	 298#	 \$ 9,309
<b>OPTION</b>	<b>You May Select a Mount or Hose Kit</b>			
-01	Fits U17/KX018 Excavator QA Mount (317-344A)	54#	54#	\$ 514
-06	SCL CII Mount (317-415A)	88#	88#	\$ 524
-07	SCL 2-Lever Mount (317-426A)	135#	135#	\$ 706
-21	BR360 Hose Kit (317-390A)	10#	10#	\$ 114
-26	SCL Hose Kit (317-418A)	10#	10#	\$ 343
 AP-BR460	 460 HYDRAULIC BREAKER	 409#	 449#	 \$ 11,486
<b>OPTION</b>	<b>You May Select a Mount or Hose Kit</b>			
-01	Fits U25/U27 Excavator QA Mount, Small (317-345A)	71#	71#	\$ 449
-02	Fits U35/KX71/KX033/M62 Excavator QA Mount, Large (317-346A)	95#	95#	\$ 674
-06	SCL CII Mount (317-415A)	88#	88#	\$ 524
-07	SCL 2-Lever Mount (317-426A)	135#	135#	\$ 706
-21	61" Excavator Hose Kit (317-352A)	11#	11#	\$ 489
-26	SCL Hose Kit (317-421A)	11#	11#	\$ 421

continued on next page



# AP-BR Series Hydraulic Breakers (cont.)

[RETURN TO INDEX](#)

Demolition

MODEL NUMBER	DESCRIPTION	APPROX. MACHINE WEIGHT	SHIPPING WEIGHT	PRICE
<b>AP-BR510</b>	<b>510 HYDRAULIC BREAKER MODEL 510</b>	595#	628#	\$ 13,978
<b><u>OPTION</u></b>	<b><u>You May Select a Mount or Hose Kit</u></b>			
<b>-01</b>	Fits KX040 Excavator QA Mount (317-347A)	95#	95#	\$ 631
<b>-02</b>	Fits KX057/U48/U55 Excavator QA Mount (317-348A)	111#	111#	\$ 765
<b>-03</b>	Skid Steer Plate with Bolt-On Breaker Mount (317-349A)	350#	350#	\$ 1,626
<b>-05</b>	SS Plate with QA Breaker Mount and KX040 QA Mount (317-392A)	340#	340#	\$ 1,605
<b>-06</b>	Pin Grabber Mount For KX057 (317-441A)	141#	141#	\$ 1,102
<b>-21</b>	61" Excavator Hose Kit (317-352A)	11#	11#	\$ 489
<b>-23</b>	102" Skid Steer Hose (317- 353A)	15#	15#	\$ 438
<b>AP-BR560</b>	<b>560 HYDRAULIC BREAKER</b>	816#	849#	\$ 16,458
<b><u>OPTION</u></b>	<b><u>You May Select a Mount or Hose Kit</u></b>			
<b>-02</b>	Fits KX057/U48/U55 Excavator QA Mount (317-348A)	111#	111#	\$ 765
<b>-03</b>	Skid Steer Plate with Bolt-On Breaker Mount (317-349A)	350#	350#	\$ 1,626
<b>-04</b>	KX080 Excavator QA Mount (317-406A)	188#	188#	\$ 1,081
<b>-05</b>	Pin Grabber Mount for KX057 (317-441A)	141#	141#	\$ 1,102
<b>-06</b>	Pin Grabber Mount for KX080 (317-444A)	172#	172#	\$ 1,263
<b>-21</b>	61" Excavator Hose Kit (317-352A)	11#	11#	\$ 489
<b>-23</b>	102" Skid Steer Hose (317-353A)	15#	15#	\$ 438
<b>-24</b>	95" Excavator Hose Kit - KX080 (317-354A)	5#	5#	\$ 544
<b>AP-BR860</b>	<b>BR860 HYDRAULIC BREAKER</b>	1,112#	1,145#	\$ 25,554
<b><u>OPTION</u></b>	<b><u>You May Select a Mount or Hose Kit</u></b>			
<b>-01</b>	Fits KX080 Excavator QA Mount (317-350A)	180#	180#	\$ 1,102
<b>-02</b>	Pin Grabber Mount for KX080 (317-442A)	187#	187#	\$ 1,295
<b>-21</b>	BR860 Hose Kit	14#	14#	\$ 544

# BREAKER MOUNT SELECTION GUIDE



**317-343A**  
(B26BH)



**317-344A**  
(U17/KX018)



**317-345A**  
(U25/U27)



**317-346A**  
(U35/KX71/KX033/M62BH)



**317-347A**  
(KX040)



**317-348A**  
(KX057/U48/U55)



**317-350A**  
(KX080/BR860)



**317-406A**  
(KX080/BR560)



**317-351A**  
(K008 Pin-On)



**317-441A**  
(Pin Grabber Mount: KX057)



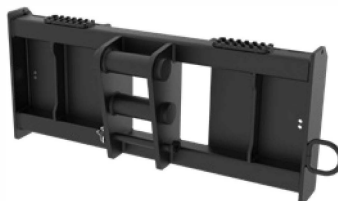
**317-442A**  
(Pin Grabber Mount: KX080)



**317-444A**  
(Pin Grabber Mount: KX080)



**317-349A**  
(SS Bolt-On)



**317-391A**  
(SS Quick Attach)



**317-392A**  
(Consists of 317-347A + 317-391A)



**317-415A**  
(SCL1000 CII Hitch)



**317-426A**  
(SCL1000 2-Lever Hitch)