

Diesel intake manifold heater / thermostart, glow plugs Go to www.SteinerTractor.com

ABC4218 fits **Case** 885, 990 Selectamatic 1971 & up, 995, 996, 1190, 1194, 1210 - 1694; Industrials: 380CK, 580F, 580G; **Ford** 2000 - 7000, 2310 - 7710, 2600 - 7700, 3330 - 8630, 4340 - 8340, TS90 - TS115, TM115 - TM190, TW5, TW35; IND: 230A - 655A, 345C - 655C, 345D - 675E, 3400, 3550 - 5550 (1965-99); Fits the following **International / Case-IH** tractors using straight spade electric connector: 395 - 995, 3220, 3230, 4210, 4230, 4240, 5120, 5130, 5140, 5150, C50 - C100, CX50 - CX100, MX80C - MX170; Industrials: 40XT, 60XT, 70XT, 75XT, 85XT, 90XT, 95XT, 485, 585, 685, 785, 885 up to SN: 3083; **John Deere** 820 3-cyl., 920, 1020, 1120 (All SN: 115420 & up); 1030, 1130, 1630, 1640, 1830, (1840 up to SN: 429999), (2020, 2120 both SN: 115420 & up), 2030, 2040, (2040S, 2140 both SN: 430000 & up), 2130, 2150, 2255, 2350, 2550, 2750; Industrials: 415B, 515B; Fits the following **Massey** tractors using straight spade electric connector: 154 - 194F, (230, 240, 240S w/ digital instrument panel), 243, 254-4, 261, 274-4, 294-4, 360 - 383, 390 - 390T, 393 - 399, 451 - 491, 550 - 699, 2615, 3050 - 3095, 3120 - 8220; IND: 20D, 20E, 20F, 30E, 30H, 40E, 50E, 50H, 60H, 200, 300, 6500, 6800; **White** 2-85 SN: 277182 & up, 2-105 SN: 276762 - 297446

ABC4232 fits **Allis Chalmers** 160, 170, 175, 5040, 5045, 5050, 6040, 8745, 8765; **Ford** 3010S, 3830, 4010S, 4030 3-cyl., 4230, 4430, 4835, 5010S, 5530, 5635, 6530, 6635, 7530, 7635, TD55D - TD4040F, TN55 - TN95 (1992 - 2009); **Case-IH** JX55, JX60, JX65, JX70, JX70U, JX75, JX80, JX80U, JX85, JX90, JX95, JX100U; **John Deere** 820 3-cyl., 920, 1020, 1120, 2020, 2120 up to SN: 115419; **Massey** 25, 35, 50, 65, Super 90, 230, 3075, 3670, 3690, 6140, 6150, 8140, 8150, 8160, 8240 - 8280; IND: 203, 205, 302, 304, 50F; **Oliver** 1355, 1365, 1370; **White** 2-60, 700



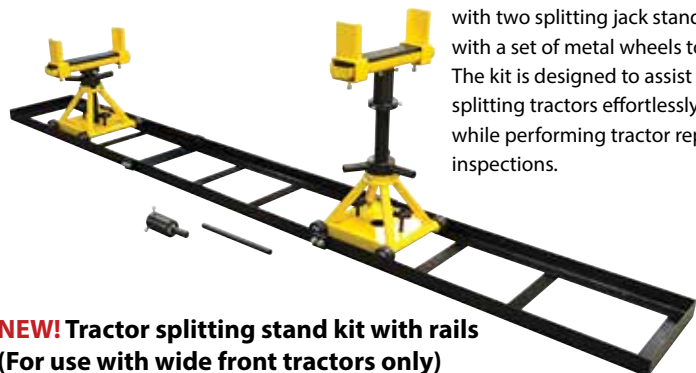
ABC4218



ABC4232

100118

New parts for old tractors®



NEW! Tractor splitting stand kit with rails
(For use with wide front tractors only)

Our **ABC4313** tractor splitting stand is constructed with two splitting jack stands which are manufactured with a set of metal wheels to ride on the steel rails. The kit is designed to assist with the process of splitting tractors effortlessly, efficiently, and safely while performing tractor repairs, maintenance, and inspections.



NEW! 4" x 16" Front wheel

JDS657 fits **John Deere** A w/ Roll-O-Matic, AW, B SN 201000 & up, BR, BO both SN: 325000 & up, 50, 60, 520, 530, 620, 630, Replaces: JD1268R

100118

New parts for old tractors®

Restoration quality seat spring
(For flip-back seat) with correct
width!



FDS107 Fits **Ford** Late 8N, NAA, Jubilee, 501, 600, 700, 800, 900, 1801 series, 2000, 4000 4-cylinder series (through 1964). Some Dexta, Super Dexta (3" wide)

New and improved
sending units

- Copper float
- Stainless steel
- Top quality ceramic resistor



FDS3482 Fits **Ford** 2000 3-cyl., 3000, 4000 3-cyl. series

FDS3494 Fits **Ford** 2810, 2910, 3610, 3910, 4110, 4610

FDS3488 Fits **Ford** 5000 - 7610

FDS3501 Fits **Ford** 5010 - 7600

Pony Wico distributor tune-up kit



JDS4266 Fits **John Deere** 70D, 720D, 730D, 80, 820, 830 (All w/ 6-volt Pony start)

090118

Now available! Electronic Ignition Kits



Precisely engineered breakerless ignition delivers twice the energy of conventional systems
Backed by a manufacturer 30 month limited warranty • Made in USA

Requires a high voltage coil and silicon wires - available separately. For details go to SteinerTractor.com #ElectronicKits



090118

We have bearings!



A

A. NEW! IHS4190 Governor thrust bearing assembly fits IH/Farmall A, B, C, Supers, Cub, Cub LoBoy, 100, 130, 140, 154, 184, 185, 200, 230, 240, 330, 340, 404, 424, 444, (460 up to engine SN: 19944), 504, (560 up to engine SN: 19080); Industrial: T340, T4, T5, 500 Crawler, 2404, 2424, 2444, 2504, some 3514 gas



B

B. NEW! IHS4183 Governor rockshaft needle bearing fits IH/Farmall A, B, C, Supers, Cub, Cub LoBoy, 100, 130, 140, 154, 184, 185, 200, 230, 240, 330, 340, 404, 424, 444, 504; Industrial: T340, T4, T5, 500 Crawler, 2404, 2424, 2444, 2504, some 3514 gas



C

C. NEW! IHS4264 Front upper transmission main shaft bearing fits Farmall Cub, Cub LoBoy; International Cub 154, 184, 185

www.SteinerTractor.com

080118

New ^{and improved} parts for old tractors[®]



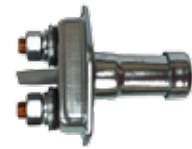
FDS483 Fuel shut off valve fits Ford 2000 3-cyl. - 7810; Industrials: 3400 - 755B (1965-96) gas, diesel; Dexta, Major, Supers (1952-64)

- 1/2" pipe thread inlet - only correct thread on the market!
- 5/16" tube outlet w/ correct recess depth



ABC156 Hydraulic piston pump repair kit fits Ford NAA, Jubilee, 501, 600, 700, 800, 900 series, 1801, 2000, 4000, 4-cyl. series (1953-64) using piston type pump NCA600C, NCA600F

Our exclusive kit is the only one on the market that includes the O-rings for the hydraulic manifold!



ABC4015 Premium heavy duty manual starter switch (base mount) for 6-volt and 12-volt systems (1-3/4" c.c. mounting holes, fits in 7/8" hole)

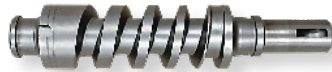
This switch is a restoration quality version of ABC066!

080118

Exclusive! Steering worm shafts



JDS2964 fits John Deere M, MI, (40S up to SN: 69403), 40 Utility up to SN: 63119



NEW! JDS3370 fits John Deere MT, (40T up to SN: 75498)



NEW! JDS3375 fits John Deere 40T SN: 75499 & up, 420 T, I, W, 430 T, I, W, 435, 440



NEW! JDS3380 fits John Deere 40H, (40S SN: 69404 & up), 40U SN: 63120 & up, 40V, 40W, 320, 330, (420 H, S, V, U), 430 H, S, V, U



www.SteinerTractor.com



070118

New parts for old tractors[®]

NEW! Governor weights for John Deere tractors



JDS3001 2-pc. set fits A, (B up to SN: 200999), D SN: 109944 & up, G, GP, R, 60, (70 gas, LP), 80, (620, 630 GP, STD), 720, 730 gas, LP), (820, 830, 840 2-cyl.)



JDS2997 2-pc. set fits B SN: 201000 & up, H, 50, (70 diesel), 520, 530; *Can replace JDS3001 to increase RPMs for pulling applications.*



JDS3826 2-pc. set fits 720, 730 both diesel



JDS3003 2-pc. governor weight pins fits A, B, (D SN: 109944 & up), G, GP, H, R, 50 - 840 2-cyl. gas, LP, diesel

070118

New parts for old tractors®

NEW! CKS3869 Power steering cylinder

fits Case 2 wheel drive only

480B SN: 8741258 & up, 480C, 480D,
480LL, 480E, 480F, (580B SN: 8735171
& up), 580C, 580D, 580F, 580SD, 580SE,
584C, 584D, 584E, 585C, 585D, 585E,
586C, 586D, 586E, 586G



060118

NEW! Crankshafts



Back in stock!

ACS074 fits Allis Chalmers
WD45 gas, LP



IHS431 fits International B250
with engine SN: 26077 & up,
B275, 354, 364, 384, B414, (424
diesel), 434, (444 diesel), 2300A,
3414, BC144, BD144, BD154 gas,
LP, diesel



JDS310 fits the following John
Deeres with 4-202, 4-219, (4-239 up
to engine SN: 769620) diesel & 1.37"
(short) nose using 1 bolt to retain
crankshaft to pulley: 2020, 2030,
2035, 2350, 2440, (2450, 2650, 2850
All up to engine SN: 155860), 2510,
2520, 2550, 2750, 2755, & Industrials



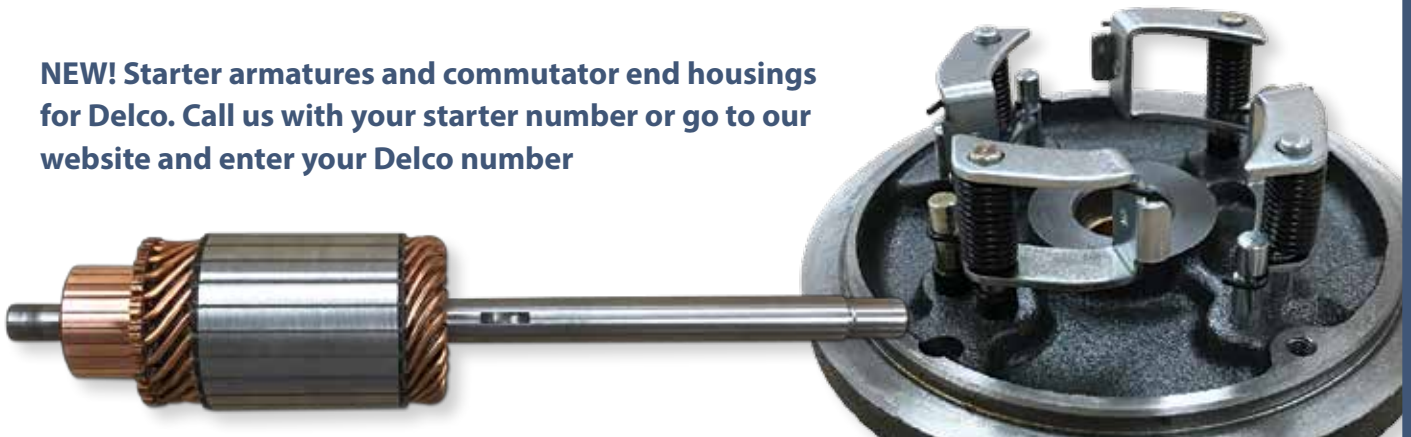
MFS4038 fits Ferguson
TE20, TO20 both with Z120
Continental gas engine

www.SteinerTractor.com

060118

www.SteinerTractor.com

**NEW! Starter armatures and commutator end housings
for Delco. Call us with your starter number or go to our
website and enter your Delco number**



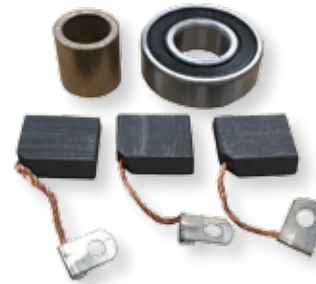
050118

New parts for old tractors®

NEW! Starter brush and bushing kits for Delco



NEW! Generator bearing, brush and bushing kits for Delco



Call us with your starter or generator number or go to our website - SteinerTractor.com and **enter your Delco number**

050118

www.SteinerTractor.com



NEW AND IMPROVED!

FDS488 Oil gauge line to block elbow fits Ford 8N (1947-52)

Replaces: 8N6722

- 1/4" male pipe fitting
- (2) 1/4" flare fittings

NEW! Fuel lines for Ford tractors

FDS1546 fits 800, 820, 840, 850, 860, 900, 950, 960 with 172" gas engine (1955-57), Replaces: NCA9282D (1/4" fuel line)

FDS1551 fits 801, 811, 821, 841, 851, 861, 871, 881, 901, 941, 951, 961, 971, 981 (All with SN: 126525 & up and 172" gas engine) (up to 1964)
Replaces: 86580561, CONN9289E (5/16" fuel line)

040118

New parts for old tractors®



Bullet style tail light and components

NEW! ABC3023 fits **Allis Chalmers** D14 SN: 19001 & up, D15 up to SN: 9000, D17 gas up to SN: 42001, D17 diesel up to SN: 38964; **John Deere** 2010 Utility, 3010 Utility, (3020 Utility up to SN: 67999), 500 Industrial up to SN: 67999; Lawn & Garden: 110, 112 both up to SN: 100000 (2.885" bezel O.D., 3.605" o/a length including lens)

NEW! ABC3030 Bezel only

ACS220 Lens only

ACS245 Lens gasket only

ABC1979 Base gasket only

New for John Deere tractors!



JDS4086 Manual fuel shut off valve fits John Deere 820 3-cyl. - 7020, 830 3-cyl. - 6030, 2040 - 4840, 2510, 2520, 3010, 4010, 5010, 4255 - 4955, 4560 - 4960; Industrial: 500, 500A, 500B, 600 gas, diesel (1/4" NPT inlet, 5/16" flare outlet, 3.415" o/a length)

040118

Our connecting rods match or exceed the OEM specifications



A

A. [CKS3854](#) fits the following **Case** with G207D non turbo diesels: 450 SN: 3060305 & up, 450B, 455B, 580C, 580D, 580SD, 584C, 585C, 586C, DH5, W11 (All Industrials)



B

B. [IHS3849](#) fits the following **International** with British BC144, BD144, BD154 gas, diesel engines: B250, B275, B276, B414, 238, 274, 354, 364, 374, 384, 434, (424, 444 w/ English BC/BD engines only) Industrials: 500, 2300A, 2424, 2444, 3414, 3444, 7000, TD5, TD5B all using 3061214R91, 306215R1, 704088R91, 706132R1 connecting rod



C

C. [IHS3883](#) fits **International** 966, 986, 1066, 1086, 1466, 1486, 1566, 1586, 3388, 3488, 3588, 3688, 3788, 4166, 4186, 4366, 4386, 5088, 5288, 5488, 6388, 6588, 6788, 7288, 7388, 7488, Hydro 100, Hydro 186, Combines, Industrials



D

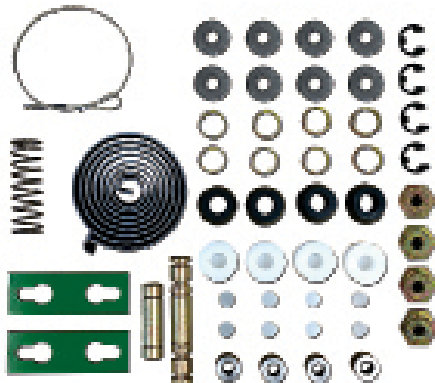
D. [JDS3851](#) fits **John Deere** 3010, 3020, 4010, 4020, 4040, 4230; Combines: 6600, 7700 both with 404 engine; Industrials: 500, 500A, 500B, 500C, 510, 600 (All with 254, 270, 381, 404 diesel engines)

www.SteinerTractor.com

030118

New and improved!

Our [JDS3237](#) seat suspension repair kit now includes snap rings and link nuts



Ride in comfort! Watch along as Tyler walks you through the steps of rebuilding the seat suspension on a John Deere New Generation (4020) seat at [SteinerTractor.TV](#)



030118

Replace your damaged / bent pushrods



NEW! [CKS3539](#) fits Case 430 - 630, W3 - 586D, 1835 - 1845 (All w/ 188, 207 C.I. diesel) (11.825" length)

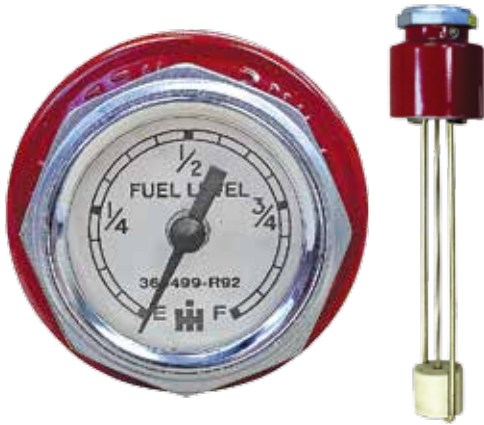
NEW! [FDS3549](#) fits the following Ford diesel 158-401 C.I. engines: 2000 3-cyl., 2600, 2610, 2810, 2910, 3000, 3600, 3610, 4000 3-cyl., 4600, 4610, 5000, 5600, 5610, 6410, 6600, 6610, 6700, 6710, 6810, 7000, 7600, 7610, 8000, 8600, 8700, 9000, 9600, 9700, (TW5 - TW35), Industrials (8/1965 - 12/2000) (12.174" o/a length)

NEW! [IHS3790](#) fits International B250, B275, B276, B414, 238, 274, 354, 364, 374, 384, 424, 434, 444 Industrials: 2300A, 2424, 2444, 3414, 3444, TD5, TD5B, 500 (All w/ BD144, BD154 diesel engines) (.315" O.D., 10.688" long)

www.SteinerTractor.com

020118

New parts for old tractors®



Mechanical vented fuel gauges are available for your classic IH enthusiast!

IHS3414

Farmall H,
W4, Supers

IHS3409

Farmall M,
W6, Supers

IHS3404

300, 350, early
400 & 450 with
18 gallon tank

020118

www.SteinerTractor.com

**Touch Control Hydraulic Strainer with Gasket
(Screen / Filter Cartridge)**



NEW! IHS3491

Fits IH / Farmall Super A, C, Super C, 100, 130,
140 (Has provision for touch control temperature
gauge and plug for tractors without the gauge)



NEW! IHS3537

Fits F300, F350, F400, F450, (W400, W450
both without factory power steering)



**NEW! 6-volt or 12-volt
LED headlight bulb**

ABC3857 works for 6-volt and
12-volt negative or positive ground 27
LED tri-chips (3 LED diodes per chip)

010118


New parts for old tractors®




NEW! Spin-on oil filter conversion kit

FDS3449 fits Ford 2000 3-cyl., 3000, 3400, 3500, 4000 3-cyl., 4400, 4500, 5000 gas, diesel (1965 - 10/1969)
(Decreases oil capacity by 1 quart)

NEW! Spin-on oil filter adapter kits

IHS3926 fits IH/Farmall A, B, C, H, Supers, (M SN: 59394 & up), Super M, MTA, O4, (O6, W6 both SN: 4253 and up), W4, Super W4, Super W6, Super W6TA, W400, W450, 100, 130, 140, 200, 230, 240, 300, 330, 340, 350, 400, 404, 424, 444, 450, 504, Industrials (pictured) 

IHS3934 fits the following with C221, C263, C291, C301 gas, LP or D236, D282, D301 diesel engines:
IH/Farmall 460, 560, 606, 656, 660, (706, 756 gas, LP or D282 diesel only); 806, 826, 856 gas, LP only 

010118