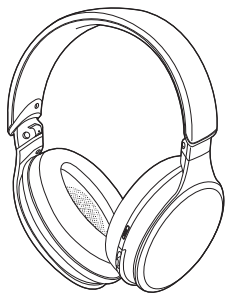


Panasonic®

Basic Owner's Manual
Mode d'emploi de base

Digital Wireless Stereo Headphones
Casque d'écoute stéréo sans fil numérique

Model No. / Modèle No. RP-HD610N



Thank you for purchasing this product. Please read these instructions carefully before using this product, and save this manual for future use.

Merci d'avoir porté votre choix sur cet appareil. Veuillez lire attentivement les présentes instructions avant d'utiliser ce produit, et conserver ce manuel pour utilisation ultérieure.



IP

Panasonic Corporation of North America
Two Riverfront Plaza, Newark, NJ 07102-5490
http://shop.panasonic.com

Panasonic Canada Inc.
5770 Ambler Drive, Mississauga, Ontario L4W 2T3
www.panasonic.com
© Panasonic Corporation 2018
Printed in China/Imprimé en Chine/Impreso en China

Panasonic Corporation
http://www.panasonic.com

En Fr

TQBOM391
F1118SK0

English

More detailed operating instructions are available in "Operating Instructions (PDF format)". To read it, download it from the website.



Français

Des instructions plus détaillées sont disponibles dans le "Mode d'emploi (format PDF)". Pour en prendre connaissance, téléchargez-le depuis le site Web.

English

Accessories

- Please check and identify the supplied accessories.
1 x USB charging cord
1 x Detachable cord
1 x Carrying case
1 x Airplane adaptor

Maintenance

- Clean this unit with a dry and soft cloth.
Do not use solvents including benzene, thinner, alcohol, kitchen detergent, a chemical wipe, etc. This might cause the exterior case to be deformed or the coating to come off.
Keeping the battery performance
During the long period of disuse, full charge this unit once every 6 months to keep the battery performance.

Français

Accessoires

- Veuillez vérifier la présence des accessoires normalement fournis.
1 x Câble de recharge USB
1 x Câble amovible
1 x Boîtier de transport
1 x Adaptateur pour avion

Entretien

- Nettoyez cet appareil avec un chiffon doux et sec.
Ne pas utiliser de solvants, comme la benzène, du diluant, de l'alcool, des détergents de cuisine, etc. Cela pourrait modifier l'apparence du boîtier externe ou décoller son revêtement.
Garder la performance de la pile
Charger complètement cet appareil une fois tous les 6 mois pour maintenir la performance de la pile lorsqu'il n'est pas utilisé pendant une longue période de temps.

English

Expressions used in this document

- The product illustrations may differ from the actual product.

Français

Expressions utilisées dans ce document

- Les illustrations de produit peuvent différer de l'apparence réelle du produit.

English

IMPORTANT SAFETY INSTRUCTIONS

Read these operating instructions carefully before using the unit. Follow the safety instructions on the unit and the applicable safety instructions listed below. Keep these operating instructions handy for future reference.

- 1. Read these instructions.
2. Keep these instructions.
3. Follow all instructions.
4. Do not use this apparatus near water.
5. Do not use this apparatus with a power supply cord or plug that does not fit into your outlet.
6. Clean only with dry cloth.
7. Do not block any ventilation openings.
8. Do not install near any heat sources such as radiators, heat registers, stoves, or other apparatus.
9. Do not defeat the safety purpose of the polarized or grounding-type plug.
10. Protect the power cord from being walked on or pinched.
11. Only use attachments/accessories specified by the manufacturer.
12. Refer all servicing to qualified service personnel.
13. Unplug this apparatus during lightning storms.
14. Refer all servicing to qualified service personnel.



Safety precautions

A lithium ion battery that is recyclable powers the product you have purchased. Please call 1-800-8-BATTERY for information on how to recycle this battery.

FCC Note:

This device complies with Part 15 of FCC Rules. Operation is subject to the following two conditions: (1) This device may not cause harmful interference, and (2) this device must accept any interference received, including interference that may cause undesired operation.

FCC Note:

This equipment has been tested and found to comply with the limits for a Class B digital device, pursuant to Part 15 of the FCC Rules. These limits are designed to provide reasonable protection against harmful interference in a residential installation.

FCC Note:

This device complies with Part 15 of the FCC Rules. Operation is subject to the following two conditions: (1) This device may not cause harmful interference, and (2) this device must accept any interference received, including interference that may cause undesired operation.

THE FOLLOWING APPLIES ONLY IN CANADA.

CAN ICES-3(B)/NMB-3(B)

Unit

- WARNING: To reduce the risk of fire, electric shock or product damage, do not expose this unit to rain, moisture, dripping or splashing. Do not place objects filled with liquids, such as vases, on this unit. Use the recommended accessories. Do not remove covers. Do not repair this unit by yourself.

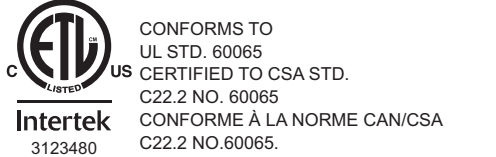
Allergies

- Discontinue use if you experience discomfort with the ear pads or any other parts that directly contact your skin. Continued use may cause rashes or other allergic reactions.

This unit may receive radio interference caused by mobile telephones during use.

Increase separation between this unit and the mobile telephone.

Keep the airplane adaptor out of reach of children to prevent swallowing. Use only the supplied USB charging cord when connecting to a computer.

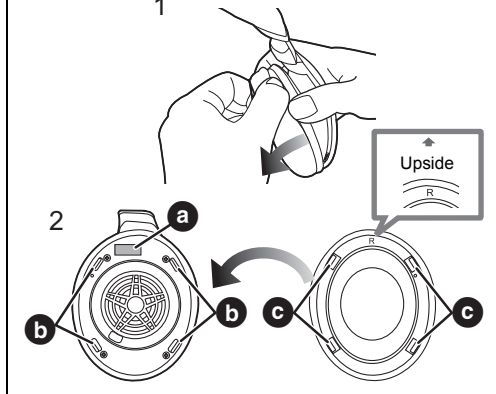


The serial number of this product can be found on the left side of the headphones. Remove the left ear pad to see it. Please note them in the space provided below and keep for future reference.

Form for recording purchase date, dealer name, address, and telephone number.

Certification information

To attach the ear pad, align the four tabs (a, b, c), and push the ear pad in until a clicking sound is heard to lock it into place. (2)



Limited Warranty (ONLY FOR U.S.A.)

Panasonic Products Limited Warranty

Limited Warranty Coverage If your product does not work properly because of a defect in materials or workmanship, Panasonic Corporation of North America (referred to as "the warrantor") will, for the length of the period indicated on the chart below, which starts with the date of original purchase ("warranty period"), at its option either (a) repair your product with new or refurbished parts, (b) replace it with a new or a refurbished equivalent value product, or (c) refund your purchase price.

Table with columns: Product or Part Name, Parts, Labor. Rows include Headphones/Earphones/Headset, All included, and Accessories.

During the "Labor" warranty period there will be no charge for labor. During the "Parts" warranty period, there will be no charge for parts. This Limited Warranty excludes both parts and labor for non-rechargeable batteries, antennas, and cosmetic parts (cabinet).

Mail-in Service—Online Repair Request

Online Repair Request To submit a new repair request and for quick repair status visit our Web Site at http://shop.panasonic.com/support

When shipping the unit, carefully pack, include all supplied accessories listed in the Owner's Manual, and send it prepaid, adequately insured and packed well in a carton box.

IF REPAIR IS NEEDED DURING THE WARRANTY PERIOD, THE PURCHASER WILL BE REQUIRED TO FURNISH A SALES RECEIPT/PROOF OF PURCHASE INDICATING DATE OF PURCHASE, AMOUNT PAID AND DATE OF PURCHASE. CUSTOMER WILL BE CHARGED FOR THE REPAIR OF ANY UNIT RECEIVED WITHOUT SUCH PROOF OF PURCHASE.

Limited Warranty Limits and Exclusions

This warranty ONLY COVERS failures due to defects in materials or workmanship, and DOES NOT COVER normal wear and tear or cosmetic damage. The warranty ALSO DOES NOT COVER damages which occurred in shipment, or failures which are caused by products not supplied by the warrantor, or failures which result from accidents, misuse, abuse, neglect, mishandling, misapplication, alteration, faulty installation, set-up adjustments, misadjustment of consumer controls, improper maintenance, power line surge, lightning damage, modification, introduction of sand, humidity or liquids, commercial use such as hotel, office, restaurant, or other business or rental use of the product, or service by anyone other than a Factory Service Center or other Authorized Service, or damage that is attributable to acts of God.

THERE ARE NO EXPRESS WARRANTIES EXCEPT AS LISTED UNDER "LIMITED WARRANTY COVERAGE".

THE WARRANTOR IS NOT LIABLE FOR INCIDENTAL OR CONSEQUENTIAL DAMAGES RESULTING FROM THE USE OF THIS PRODUCT, OR ARISING OUT OF ANY BREACH OF THIS WARRANTY.

CONTACT INFORMATION

For product operation and information assistance, please visit our Support page: www.panasonic.ca/english/support

PARTS AND SERVICE, WHICH ARE NOT COVERED BY THIS LIMITED WARRANTY, ARE YOUR RESPONSIBILITY.

Consumer Affairs Department
Panasonic Corporation of North America
661 Independence Pkwy
Chesapeake, VA 23320

Shop Accessories!

Go to http://shop.panasonic.com/support

Get everything you need to get the most out of your Panasonic products

Customer Services Directory

For Product Information, Operating Assistance, Parts, Owner's Manuals, Dealer and Service info go to http://shop.panasonic.com/support

For the hearing or speech impaired TTY: 1-877-833-8855

As of April 2017

Limited Warranty (ONLY FOR CANADA)

Panasonic Canada Inc.

5770 Ambler Drive, Mississauga, Ontario L4W 2T3

PANASONIC PRODUCT – LIMITED WARRANTY EXCHANGE PROGRAM

Panasonic Canada Inc. warrants this product to be free from defects in material and workmanship under normal use and for a period as stated below from the date of original purchase agrees to, at its option either (a) repair your product with new or refurbished parts, (b) replace it with a new or a refurbished equivalent value product, or (c) refund your purchase price.

This warranty is given only to the original purchaser, or the person for whom it was purchased as a gift, of a Panasonic brand product mentioned above sold by an authorized Panasonic dealer in Canada and purchased and used in Canada, which product was not sold "as is", and which product was delivered to you in new condition in the original packaging.

IN ORDER TO BE ELIGIBLE TO RECEIVE WARRANTY SERVICE HEREUNDER, A PURCHASE RECEIPT OR OTHER PROOF OF DATE OF ORIGINAL PURCHASE, SHOWING AMOUNT PAID AND PLACE OF PURCHASE IS REQUIRED

LIMITATIONS AND EXCLUSIONS

This warranty ONLY COVERS failures due to defects in materials or workmanship, and DOES NOT COVER normal wear and tear or cosmetic damage. The warranty ALSO DOES NOT COVER damages which occurred in shipment, or failures which are caused by products not supplied by Panasonic Canada Inc., or failures which result from accidents, misuse, abuse, neglect, mishandling, misapplication, alteration, faulty installation, set-up adjustments, misadjustment of consumer controls, improper maintenance, power line surge, lightning damage, modification, introduction of sand, humidity or liquids, detailing the complaint, a return address and provide a daytime business or rental use of the product, or service by anyone other than a Authorized Service, or damage that is attributable to acts of God.

Dry cell batteries are also excluded from coverage under this warranty.

CE QUI SUIV NE S'APPLIQUE QU'AU CANADA.

Le présent appareil est conforme à la partie 15 des règles de la FCC et aux CNR d'Industrie Canada applicables aux appareils radio exempts de licence.

CE QUI SUIV NE S'APPLIQUE QU'AU CANADA.

Le présent appareil est conforme à la partie 15 des règles de la FCC et aux CNR d'Industrie Canada applicables aux appareils radio exempts de licence.

CE QUI SUIV NE S'APPLIQUE QU'AU CANADA.

Le présent appareil est conforme à la partie 15 des règles de la FCC et aux CNR d'Industrie Canada applicables aux appareils radio exempts de licence.

CE QUI SUIV NE S'APPLIQUE QU'AU CANADA.

Le présent appareil est conforme à la partie 15 des règles de la FCC et aux CNR d'Industrie Canada applicables aux appareils radio exempts de licence.

CE QUI SUIV NE S'APPLIQUE QU'AU CANADA.

Le présent appareil est conforme à la partie 15 des règles de la FCC et aux CNR d'Industrie Canada applicables aux appareils radio exempts de licence.

CE QUI SUIV NE S'APPLIQUE QU'AU CANADA.

Le présent appareil est conforme à la partie 15 des règles de la FCC et aux CNR d'Industrie Canada applicables aux appareils radio exempts de licence.

CE QUI SUIV NE S'APPLIQUE QU'AU CANADA.

Le présent appareil est conforme à la partie 15 des règles de la FCC et aux CNR d'Industrie Canada applicables aux appareils radio exempts de licence.

CE QUI SUIV NE S'APPLIQUE QU'AU CANADA.

Le présent appareil est conforme à la partie 15 des règles de la FCC et aux CNR d'Industrie Canada applicables aux appareils radio exempts de licence.

CE QUI SUIV NE S'APPLIQUE QU'AU CANADA.

Le présent appareil est conforme à la partie 15 des règles de la FCC et aux CNR d'Industrie Canada applicables aux appareils radio exempts de licence.

CE QUI SUIV NE S'APPLIQUE QU'AU CANADA.

Le présent appareil est conforme à la partie 15 des règles de la FCC et aux CNR d'Industrie Canada applicables aux appareils radio exempts de licence.

CE QUI SUIV NE S'APPLIQUE QU'AU CANADA.

Le présent appareil est conforme à la partie 15 des règles de la FCC et aux CNR d'Industrie Canada applicables aux appareils radio exempts de licence.

CE QUI SUIV NE S'APPLIQUE QU'AU CANADA.

Le présent appareil est conforme à la partie 15 des règles de la FCC et aux CNR d'Industrie Canada applicables aux appareils radio exempts de licence.

CE QUI SUIV NE S'APPLIQUE QU'AU CANADA.

Le présent appareil est conforme à la partie 15 des règles de la FCC et aux CNR d'Industrie Canada applicables aux appareils radio exempts de licence.

CE QUI SUIV NE S'APPLIQUE QU'AU CANADA.

Le présent appareil est conforme à la partie 15 des règles de la FCC et aux CNR d'Industrie Canada applicables aux appareils radio exempts de licence.

CE QUI SUIV NE S'APPLIQUE QU'AU CANADA.

Le présent appareil est conforme à la partie 15 des règles de la FCC et aux CNR d'Industrie Canada applicables aux appareils radio exempts de licence.

CE QUI SUIV NE S'APPLIQUE QU'AU CANADA.

Le présent appareil est conforme à la partie 15 des règles de la FCC et aux CNR d'Industrie Canada applicables aux appareils radio exempts de licence.

CE QUI SUIV NE S'APPLIQUE QU'AU CANADA.

Le présent appareil est conforme à la partie 15 des règles de la FCC et aux CNR d'Industrie Canada applicables aux appareils radio exempts de licence.

CE QUI SUIV NE S'APPLIQUE QU'AU CANADA.

Le présent appareil est conforme à la partie 15 des règles de la FCC et aux CNR d'Industrie Canada applicables aux appareils radio exempts de licence.

CE QUI SUIV NE S'APPLIQUE QU'AU CANADA.

Le présent appareil est conforme à la partie 15 des règles de la FCC et aux CNR d'Industrie Canada applicables aux appareils radio exempts de licence.

Français

IMPORTANTES MISES EN GARDE

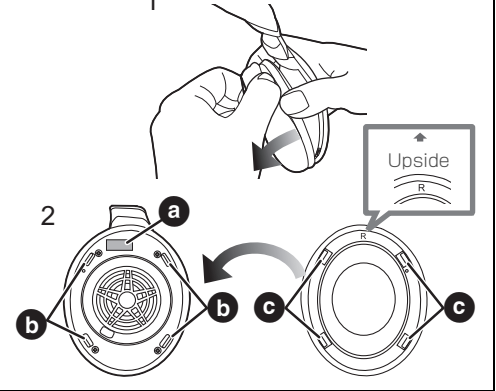
Avant d'utiliser l'appareil, lire attentivement les instructions qui suivent. Se conformer tout particulièrement aux avertissements inscrits sur l'appareil et aux consignes de sécurité indiquées ci-dessous. Conserver le présent manuel pour consultation ultérieure.

- 1. Lire attentivement ces instructions.
2. Conserver ces instructions.
3. Lire toutes les mises en garde.
4. Suivre toutes les instructions.
5. Ne pas utiliser cet appareil près d'une source d'eau.
6. Ne nettoyer qu'avec un chiffon sec.
7. Ne pas bloquer les ouvertures d'aération.
8. Ne pas installer l'appareil près d'un appareil de chauffage tel qu'un radiateur, une cuisinière, un registre de chaleur ou tout dispositif émettant de la chaleur (y compris un amplificateur).
9. Pour des raisons de sécurité, ne pas modifier la fiche polarisée ou celle de mise à la terre.
10. S'assurer que le cordon est placé dans un endroit où il ne risque pas d'être écrasé, piétiné ou coincé.
11. Utiliser que les accessoires ou périphériques recommandés par le fabricant.
12. Ne pas utiliser l'appareil qu'avec un chariot, meuble, trépied, support ou table recommandés par le fabricant ou vendu avec l'appareil.
13. Débrancher cet appareil lors d'un orage ou en cas de non-utilisation prolongée.
14. Confier l'appareil à un technicien qualifié pour toute réparation.



Certification information (a) can be found on the right side of the headphones. Remove the right ear pad to see it. (1)

To attach the ear pad, align the four tabs (b, c), and push the ear pad in until a clicking sound is heard to lock it into place. (2)



Certificat de garantie limitée (Pour le Canada seulement)

Panasonic Canada Inc. 5770, Ambler Drive, Mississauga (Ontario) L4W 2T3

PRODUIT PANASONIC – GARANTIE LIMITÉE PROGRAMME DE REMPLACEMENT

Précautions de sécurité

L'appareil que vous vous êtes procuré est alimenté par une pile au lithium-ion. Pour des renseignements sur le recyclage de la pile, veuillez composer le 1-800-8-BATTERY.

CE QUI SUIV NE S'APPLIQUE QU'AU CANADA.

Le présent appareil est conforme à la partie 15 des règles de la FCC et aux CNR d'Industrie Canada applicables aux appareils radio exempts de licence.

CE QUI SUIV NE S'APPLIQUE QU'AU CANADA.

Le présent appareil est conforme à la partie 15 des règles de la FCC et aux CNR d'Industrie Canada applicables aux appareils radio exempts de licence.

CE QUI SUIV NE S'APPLIQUE QU'AU CANADA.

Le présent appareil est conforme à la partie 15 des règles de la FCC et aux CNR d'Industrie Canada applicables aux appareils radio exempts de licence.

CE QUI SUIV NE S'APPLIQUE QU'AU CANADA.

Le présent appareil est conforme à la partie 15 des règles de la FCC et aux CNR d'Industrie Canada applicables aux appareils radio exempts de licence.

CE QUI SUIV NE S'APPLIQUE QU'AU CANADA.

Le présent appareil est conforme à la partie 15 des règles de la FCC et aux CNR d'Industrie Canada applicables aux appareils radio exempts de licence.

CE QUI SUIV NE S'APPLIQUE QU'AU CANADA.

Le présent appareil est conforme à la partie 15 des règles de la FCC et aux CNR d'Industrie Canada applicables aux appareils radio exempts de licence.

CE QUI SUIV NE S'APPLIQUE QU'AU CANADA.

Le présent appareil est conforme à la partie 15 des règles de la FCC et aux CNR d'Industrie Canada applicables aux appareils radio exempts de licence.

CE QUI SUIV NE S'APPLIQUE QU'AU CANADA.

Le présent appareil est conforme à la partie 15 des règles de la FCC et aux CNR d'Industrie Canada applicables aux appareils radio exempts de licence.

CE QUI SUIV NE S'APPLIQUE QU'AU CANADA.

Le présent appareil est conforme à la partie 15 des règles de la FCC et aux CNR d'Industrie Canada applicables aux appareils radio exempts de licence.

CE QUI SUIV NE S'APPLIQUE QU'AU CANADA.

Le présent appareil est conforme à la partie 15 des règles de la FCC et aux CNR d'Industrie Canada applicables aux appareils radio exempts de licence.

CE QUI SUIV NE S'APPLIQUE QU'AU CANADA.

Le présent appareil est conforme à la partie 15 des règles de la FCC et aux CNR d'Industrie Canada applicables aux appareils radio exempts de licence.

CE QUI SUIV NE S'APPLIQUE QU'AU CANADA.

Le présent appareil est conforme à la partie 15 des règles de la FCC et aux CNR d'Industrie Canada applicables aux appareils radio exempts de licence.

CE QUI SUIV NE S'APPLIQUE QU'AU CANADA.

Le présent appareil est conforme à la partie 15 des règles de la FCC et aux CNR d'Industrie Canada applicables aux appareils radio exempts de licence.

CE QUI SUIV NE S'APPLIQUE QU'AU CANADA.

Le présent appareil est conforme à la partie 15 des règles de la FCC et aux CNR d'Industrie Canada applicables aux appareils radio exempts de licence.

CE QUI SUIV NE S'APPLIQUE QU'AU CANADA.

Le présent appareil est conforme à la partie 15 des règles de la FCC et aux CNR d'Industrie Canada applicables aux appareils radio exempts de licence.

CE QUI SUIV NE S'APPLIQUE QU'AU CANADA.

Le présent appareil est conforme à la partie 15 des règles de la FCC et aux CNR d'Industrie Canada applicables aux appareils radio exempts de licence.

CE QUI SUIV NE S'APPLIQUE QU'AU CANADA.

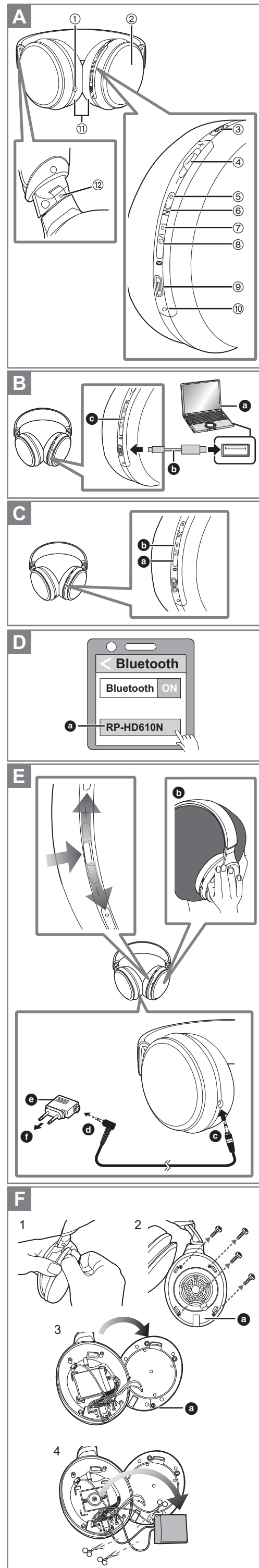
Le présent appareil est conforme à la partie 15 des règles de la FCC et aux CNR d'Industrie Canada applicables aux appareils radio exempts de licence.

CE QUI SUIV NE S'APPLIQUE QU'AU CANADA.

Le présent appareil est conforme à la partie 15 des règles de la FCC et aux CNR d'Industrie Canada applicables aux appareils radio exempts de licence.

CE QUI SUIV NE S'APPLIQUE QU'AU CANADA.

Le présent appareil est conforme à la partie 15 des règles de la FCC et aux CNR d'Industrie Canada applicables aux appareils radio exempts de licence.



English

A Part names

- ① Audio input terminal
- ② Ambient sound enhancer sensor panel
- ③ Action button
- ④ Noise cancelling LED
- ⑤ Multiple functions button
- ⑥ Noise cancelling LED
- ⑦ [NC] button
- ⑧ Power/pairing LED
- ⑨ [On/Off] button
- ⑩ Charging terminal (DC IN)
- ⑪ Microphone
- ⑫ Ear pads
- ⑬ Raised dot indicating the left side
- ⑭ On: Standby/ON

B Charging

The rechargeable battery (installed in the unit) is not charged initially. Charge the battery before using the unit.

Connect this unit to a computer (B) using the USB charging cord (supplied) (B).

- The power/pairing LED (B) lights in red when charging is in progress. When charging is completed, the power/pairing LED will go out.
- It takes approx. 4 hours to charge the battery from empty to full.
- Check the direction of the terminals and plug input straight holding onto the plug. (It may result in malfunction by the deforming of the terminal if it is plugged in obliquely or in wrong direction.)

- The power cannot be turned on while charging.
- Make sure the computer is turned on and is not on standby or sleep mode.
- Do not use any other USB charging cords except the supplied one.
- When the battery starts running low during use of the unit, the blinking power/pairing LED will turn from blue to red. A beep will sound every 1 minute.* When the battery runs out, an English guidance message will be heard and the power will turn off.

- If you press [On/Off] (B) twice quickly, an English guidance message will be heard and you can check the battery level.

C Turning the power on/off

Press and hold [On/Off] (B) (B) of this unit for approx. 3 seconds until the power/pairing LED (blue) (B) blinks. A beep will sound and the power/pairing LED (blue) will blink slowly.

To turn the power off

- Press and hold [On/Off] (B) (B) for approximately 3 seconds. An English guidance message will be heard, and the power will be turned off.
- If the unit is not connected to a Bluetooth® device, an English guidance message will be heard and turn off the unit automatically approximately 5 minutes after you have stopped using it. (Auto power off) (Except for when noise cancelling is turned ON.)
- Auto power off does not work when the detachable cord (supplied) is connected.

D Connecting a Bluetooth® device

Bluetooth® pairing

- 1. In the power-off state, press and hold [On/Off] (B) of this unit until the power/pairing LED blinks.
 - When pairing a device for the first time: approx. 3 seconds
 - When pairing a second or subsequent devices: approx. 5 seconds

- The unit starts to search for the Bluetooth® device for connection, and the power/pairing LED will blink in blue and red alternately.

- 2. Turn on the power of the Bluetooth® device, and enable the Bluetooth® function.

- 3. Select "RP-HD610N" (B) from the Bluetooth® device's menu.

- If prompted for a passkey, input the passkey "0000 (four zeros)" of this unit.
- When the power/pairing LED (blue) blinks twice every approx. 2 seconds, pairing (registration) is completed. (Connection established)

- If connection to a device is not established within approximately 5 minutes, the unit will be turned off. Perform pairing again.

- (Except for when noise cancelling is turned ON.)

- 1. Turn on this unit.
- 2. Perform steps 2 and 3 of "Bluetooth® pairing". (→ above)
- When the power/pairing LED (blue) blinks twice every approx. 2 seconds, pairing (registration) is completed. (Connection established)

E Using the headphones

When using the functions below that are indicated with the [B] mark, connect the Bluetooth® device and the unit.

- **Listening to music [B]**
- Select and play the music on the Bluetooth® device.
- The unit's headphones will output the music or the audio of the video being played back.

- **Remote controlling (Available only if your Bluetooth® device supports "AVRCP" Bluetooth® profiles) [B]**
- (Operation example of [Multiple functions button] (B))

Play / Pause: Press [Multiple functions button]

Increase the volume: Slide the [Multiple functions button] towards "+".

• Sliding and holding towards "+" allows you to continuously raise the volume.

Decrease the volume: Slide the [Multiple functions button] towards "-".

• Sliding and holding towards "-" allows you to continuously lower the volume.

Skip forward: Press [Multiple functions button] twice quickly.

Skip backward: Press [Multiple functions button] three times quickly.

Fast forward: Press the [Multiple functions button] twice quickly, hold the second press.

Fast rewind: Press the [Multiple functions button] three times quickly, hold the third press.

• The volume can be adjusted in 31 levels (16 levels during calls). When the maximum or minimum volume is reached, a beep will sound.

- **Making a phone call [B]**
- 1. Press [Multiple functions button] (B) on the unit and answer the incoming call.
- (HFP only) To reject the incoming call, press [Multiple functions button] twice quickly.

- 2. Start talking.
- Press [Multiple functions button] to end the phone call.
- (HFP only) It may be difficult to hear phone conversations when the unit is used in locations with loud ambient noise or in outdoor or other locations exposed to powerful winds. In that case, change the calling location or switch the calling device to the Bluetooth® enabled phone to continue the call. (Press [Multiple functions button] on the unit twice quickly to switch.)
- You can have the Bluetooth® enabled phone make phone calls by using the microphone of the unit and an app of the Bluetooth® enabled phone. (→ right, "Activating a voice function")

Using noise cancelling

While using the noise cancelling function, changes the volume and sound quality. The sound quality is set so that it is optimized for each mode.

Press the [NC] button to adjust the volume of the playback device. (→ B)

• [NC] を押すことに、3つのレベルと[切]の状態を切り替えることができます。

- While using the noise cancelling function, the noise cancelling LED lights in green.
- While using the noise cancelling function, a very small amount of noise which is generated from the circuit that reduces noise may be heard, but this is normal and not indicative of any trouble. (This very-low-level noise may be heard in quiet places or in the blank parts between tracks.)

Using Google Assistant

普通に話しかかると、Google アシスタントを起動したスマートフォンやタブレットを操作し、音楽再生や調べものをすることが出来ます。

Using the app "Panasonic Audio Connect"

「Panasonic Audio Connect」アプリ(無料)をインストールしたスマートフォンと Bluetooth® 接続をすることでさまざまな機能をお試しください。

Using the ambient sound enhancer

Place your hand over the ambient sound enhancer sensor panel (R side) so that its entire surface is covered. (B)

- Noise cancelling will turn OFF temporarily and the volume of the playback sound will be lowered.
- To switch this function between enabled and disabled: Slide and hold the [Multiple functions button] (B) towards "+" and at the same time press and hold [NC] for at least 5 seconds.

To set this function to always-on mode: Press [NC] button twice quickly.

- To deactivate always-on mode, press the [NC] button or place your hand over the ambient sound enhancer sensor panel (R side) so that its entire surface is covered.
- The ambient sound enhancer works only while the unit is turned on.

Activating a voice function [B]

You can activate Siri® or other voice functions with a button on the ambient playback, and the unit.

Press and hold [Multiple functions button] (B) of this unit for approx. 3 seconds.

Making a multi-point connection [B]

- 1. Register the unit to both the first Bluetooth® device and the second Bluetooth® device.
- 2. Connect the first Bluetooth® device, which will be used for music playback, and the unit.
- 3. Connect the second Bluetooth® device, which will be used for calls, and the unit.

- For more details, including more specific setup instructions, refer to the operating instructions for the Bluetooth® devices.
- Only one Bluetooth® device can be connected for music playback.
- When playing back music on an iOS device, be sure to connect the unit and that Bluetooth® device first.
- When connecting a device, such as one running an Android™ OS, exclusively for calls, disable the "AZDP" setting. (Depending on the Bluetooth® device, this setting may not be available.)

Using the detachable cord (supplied)

While the unit is turned off, it can be used as normal headphones by connecting the detachable cord (supplied). (B)

- If you connect the detachable cord (supplied) when connected to Bluetooth®, the Bluetooth® connection will be lost.
- The [Multiple functions button] does not work even while the unit is turned on.
- Noise may occur due to dirt on the plug. Clean the plug with a soft dry cloth if this occurs.
- Do not use any other detachable cords except the supplied one.

To connect to an airplane audio system: Connect the unit and the detachable cord (supplied). (B)

- 2. Connect the input plug (B) of the detachable cord (supplied) to the airplane adaptor (supplied) (B).
- 3. Connect the airplane adaptor to the in-airplane audio system. (B)

Restoring to the factory settings

Charge the battery before restoring the unit.

- 1. While the unit is turned off, press and hold [On/Off] (B) for at least 5 seconds until the power/pairing LED starts blinking alternately in blue and red.
- 2. While the power/pairing LED is blinking alternately in blue and red, slide and hold the [Multiple functions button] towards "+" and at the same time press and hold [On/Off] (B) for at least 5 seconds.
- The default settings will be restored after the power/pairing LED (blue) blinks fast and the unit turns off.
- When pairing a device again, delete the registering information (Device: "RP-HD610N") from the Bluetooth® device's menu, and register this unit with the Bluetooth® device again. (→ B)

To remove the battery when disposing of this unit

The following instructions are not intended for repairing purposes but for the disposal of this unit. This unit is not restorable once disassembled.

- When disposing of this unit, take out the battery installed in this unit and recycle it.
- Disassemble after the battery runs out.
- Keep disassembled parts out of reach of children.

Regarding the handling of used batteries

- Insulate the terminals with adhesive tape or similar material.
- Do not disassemble.

Batteries

- Do not heat or expose to flame.
- Do not leave the battery(ies) in a car exposed to direct sunlight for a long period of time with doors and windows closed.
- Battery mishandling can cause electrolyte leakage which can damage items the leaked fluid comes into contact with. If electrolyte leaks from the battery, consult your local dealer. Wash thoroughly with water if electrolyte comes in contact with any part of your body.
- When disposing of the batteries, please contact your local authorities or dealer and ask for the correct method of disposal.

- 1. Remove the left ear pad.
- 2. Remove the 4 screws.
- 3. Remove the part (B) in step 2.
- 4. Remove the battery, and cut off the wires one by one with scissors.

Troubleshooting

Before requesting service, make the following checks. If you are in doubt about some of the check points, or if the remedies indicated in the chart do not solve the problem, refer to "Customer Services Directory" on the front page if you reside in the U.S.A.

- No sound.
 - Check if music is playing on the Bluetooth® device.
 - Make sure that the unit is turned on and the volume is not set too low.
 - Pair and connect the Bluetooth® device and the unit again. (→ B)

- Check if the Bluetooth® compatible device supports "AZDP" profile. For details on profiles, see "Listening to music" in "Owner's Manual (PDF format)". Also refer to the operating manual for the Bluetooth® compatible device.

- Cannot adjust the volume.
 - Is the ambient sound enhancer operating? Turn off the ambient sound enhancer. (→ B)

- Low volume.
 - Is the ambient sound enhancer operating? Turn off the ambient sound enhancer. (→ B)
 - Increase the volume of the unit. (→ B)
 - Increase the volume on the Bluetooth® device.

- Sound from the device is cut off. / Too much noise. / Sound quality is bad.
 - Sound may be disrupted if signals are blocked. Do not fully cover this unit with the palm of your hand, etc.
 - The device may be out of the 10 m (33 ft) communication range. Move the device closer to this unit.
 - Remove any obstacle between this unit and the device.
 - Switch off any wireless LAN device when not in use.
 - A communication problem may arise if the battery is not fully charged. Charge the unit. (→ B)

- If the unit and the Bluetooth® device are connected via LDAC, the problem may be solved by changing the sound quality mode on the Bluetooth® device to give priority to connection. For details, refer to the operating instructions for the Bluetooth® device.

- The device cannot be connected.
 - Delete the pairing information for this unit from the Bluetooth® device, then pair them again. (→ B)

- You cannot hear the other person.
 - Make sure that the unit and the Bluetooth® enabled phone are turned on.
 - Pair and connect the unit and the Bluetooth® enabled phone are connected. (→ B)
 - Check the audio settings of the Bluetooth® enabled phone. Switch the calling device to the unit if it is set to the Bluetooth® enabled phone.

- If the volume of the other person's voice is too low, increase the volume of both the unit and the Bluetooth® enabled phone.

- Cannot make a phone call.
 - Check if the Bluetooth® compatible device supports "HSP" or "HFP" profile. For details on profiles, see "Listening to music" and "Making a phone call" in "Owner's Manual (PDF format)". Also refer to the operating manual for the Bluetooth® enabled phone.

- The unit does not respond.
 - The unit can be reset when all operations are rejected. To reset the unit, connect the unit to a computer using the USB charging cord. (The pairing device information will not be deleted.)

- Cannot charge the unit. / The power/pairing LED blinks during charging.
 - Is the USB port you are currently using working properly? If your computer has other USB ports, unplug the connector from its current port and plug it into one of the other ports.
 - If the measures mentioned above are not applicable, unplug the USB charging cord and plug it in again.
 - If the charge time and operating time become shortened, the battery may have run down. (Number of charging times of the installed battery: Approximately 300)

- The power/pairing LED does not light during charging. / Charging takes longer.
 - Is the USB charging cord connected firmly to the USB terminal of the computer? (→ B)
 - Make sure to charge in a room temperature between 10 °C and 35 °C (50 °F and 95 °F).

- The power does not turn on.
 - Is the unit being charged? The power cannot be turned ON during charging. (→ B)

- The audio guidance language has changed.
 - The audio guidance language can be switched. (Slide and hold the [Multiple functions button] towards "-" and at the same time press and hold [On/Off] (B) for at least 5 seconds.)

Specifications

General

| | |
|--|--|
| Power supply | DC 5 V, 0.5 A (Internal battery: 3.7 V (Li-polymer 800 mAh)) |
| Operating time ¹ | Approx. 24 hours (Noise cancelling: ON, SBC) |
| Charging time ² (25 °C (77 °F)) | Approx. 4 hours |
| Operating temperature range | 10 °C to 35 °C (50 °F to 95 °F) |
| Operating temperature range | 0 °C to 40 °C (32 °F to 104 °F) |
| Operating humidity range | 35 %RH to 80 %RH (no condensation) |
| Mass (Weight) | Approx. 275 g (9.5 oz) (without cord) |

Bluetooth® section

| | |
|--------------------|---|
| Frequency band | 2402 MHz to 2480 MHz |
| Supported profiles | A2DP, AVRCP, HSP, HFP |
| Supported codec | SBC, AAC, Qualcomm® aptX™, Qualcomm® aptX™ HD, LDAC |

¹ It may be shorter depending on the operating conditions.
² The time required to charge the battery from empty to full.
• Specifications are subject to change without notice.

The Bluetooth® word mark and logos are registered trademarks owned by Bluetooth SIG, Inc. and any use of such marks by Panasonic Corporation is under license. Other trademarks and trade names are those of their respective owners.

Siri is registered trademark of Apple Inc.
QR Code is a registered trademark of DENSO WAVE INCORPORATED.
Google and Android are trademarks of Google LLC.
LDAC and LDAC logo are trademarks of Sony Corporation.

Qualcomm aptX is a product of Qualcomm Technologies International, Ltd. Qualcomm is a trademark of Qualcomm Incorporated, registered in the United States and other countries, used with permission. aptX is a trademark of Qualcomm Technologies International, Ltd., registered in the United States and other countries, used with permission.

Other system names and product names appearing in this document are in general the registered trademarks or trademarks of the respective developer companies.
Note that the ™ mark and ® mark do not appear in this document.

Français

A Part names

- ① Audio input terminal
- ② Ambient sound enhancer sensor panel
- ③ Action button
- ④ Noise cancelling LED
- ⑤ Multiple functions button
- ⑥ Noise cancelling LED
- ⑦ [NC] button
- ⑧ Power/pairing LED
- ⑨ [On/Off] button
- ⑩ Charging terminal (DC IN)
- ⑪ Microphone
- ⑫ Ear pads
- ⑬ Raised dot indicating the left side
- ⑭ On: Standby/ON

B Charging

The rechargeable battery (installed in the unit) is not charged initially. Charge the battery before using the unit.

Connect this unit to a computer (B) using the USB charging cord (supplied) (B).

- The power/pairing LED (B) lights in red when charging is in progress. When charging is completed, the power/pairing LED will go out.
- It takes approx. 4 hours to charge the battery from empty to full.
- Check the direction of the terminals and plug input straight holding onto the plug. (It may result in malfunction by the deforming of the terminal if it is plugged in obliquely or in wrong direction.)

- The power cannot be turned on while charging.
- Make sure the computer is turned on and is not on standby or sleep mode.
- Do not use any other USB charging cords except the supplied one.
- When the battery starts running low during use of the unit, the blinking power/pairing LED will turn from blue to red. A beep will sound every 1 minute.* When the battery runs out, an English guidance message will be heard and the power will turn off.

- If you press [On/Off] (B) twice quickly, an English guidance message will be heard and you can check the battery level.

C Turning the power on/off

Press and hold [On/Off] (B) (B) of this unit for approx. 3 seconds until the power/pairing LED (blue) (B) blinks. A beep will sound and the power/pairing LED (blue) will blink slowly.

To turn the power off

- Press and hold [On/Off] (B) (B) for approximately 3 seconds. An English guidance message will be heard, and the power will be turned off.
- If the unit is not connected to a Bluetooth® device, an English guidance message will be heard and turn off the unit automatically approximately 5 minutes after you have stopped using it. (Auto power off) (Except for when noise cancelling is turned ON.)
- Auto power off does not work when the detachable cord (supplied) is connected.

D Connecting a Bluetooth® device

Bluetooth® pairing

- 1. In the power-off state, press and hold [On/Off] (B) of this unit until the power/pairing LED blinks.
 - When pairing a device for the first time: approx. 3 seconds
 - When pairing a second or subsequent devices: approx. 5 seconds

- The unit starts to search for the Bluetooth® device for connection, and the power/pairing LED will blink in blue and red alternately.

- 2. Turn on the power of the Bluetooth® device, and enable the Bluetooth® function.

- 3. Select "RP-HD610N" (B) from the Bluetooth® device's menu.

- If prompted for a passkey, input the passkey "0000 (four zeros)" of this unit.
- When the power/pairing LED (blue) blinks twice every approx. 2 seconds, pairing (registration) is completed. (Connection established)

- If connection to a device is not established within approximately 5 minutes, the unit will be turned off. Perform pairing again. (Except for when noise cancelling is turned ON.)

Connecting a paired Bluetooth® device

- 1. Turn on this unit.
- 2. Perform steps 2 and 3 of "Bluetooth® pairing". (→ above)
- When the power/pairing LED (blue) blinks twice every approx. 2 seconds, pairing (registration) is completed. (Connection established)

E Using the headphones

When using the functions below that are indicated with the [B] mark, connect the Bluetooth® device and the unit.

- **Listening to music [B]**
- Select and play the music on the Bluetooth® device.
- The unit's headphones will output the music or the audio of the video being played back.

- **Remote controlling (Available only if your Bluetooth® device supports "AVRCP" Bluetooth® profiles) [B]**
- (Operation example of [Multiple functions button] (B))

Play / Pause: Press [Multiple functions button]

Increase the volume: Slide the [Multiple functions button] towards "+".

• Sliding and holding towards "+" allows you to continuously raise the volume.

Decrease the volume: Slide the [Multiple functions button] towards "-".

• Sliding and holding towards "-" allows you to continuously lower the volume.

Skip forward: Press [Multiple functions button] twice quickly.

Skip backward: Press [Multiple functions button] three times quickly.

Fast forward: Press the [Multiple functions button] twice quickly, hold the second press.

Fast rewind: Press the [Multiple functions button] three times quickly, hold the third press.

• The volume can be adjusted in 31 levels (16 levels during calls). When the maximum or minimum volume is reached, a beep will sound.