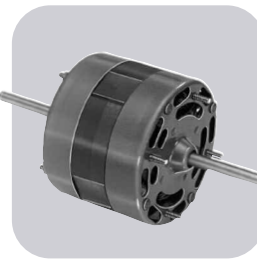


# One-On-One™ Direct Replacement Motors

---

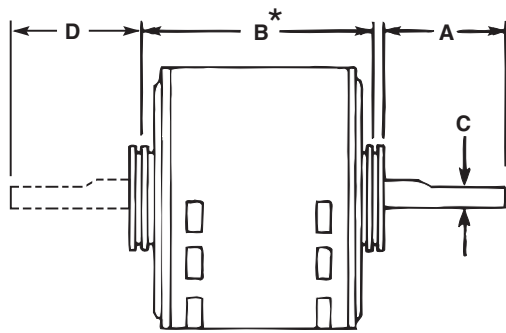


# Table of Contents

ONE-ON-ONE

OEM Name	Page No.	OEM Name	Page No.	OEM Name	Page No.
20th Century	O-3	First Company	O-11	McMillan	O-22
Air America Corp.	O-3	Friedrich	O-11	McQuay	O-22
Air Plus	O-3	Frymaster	O-11	Miami/Carey	O-23
Aladdin Steel	O-3	Gaffers and Sattler	O-11	Miller	O-23
Amana	O-3-4	General Electric	O-11	Nordyne	O-23
American Air Filter	O-4	Goodman	O-12-13	Nutone	O-23-24
American Water Heater	O-4	Greenheck Fan	O-13	Patton	O-24
AO Smith/Century	O-4	GSW	O-13	Penn Ventilator	O-24
Aprilaire	O-4	Heat N Glow	O-14	PMI/Valcun Hart	O-24
Arkla	O-4	Heatcraft	O-14	Prestcold	O-24
Armstrong	O-4	Heil-Quaker	O-14	Reznor	O-25
Bohn	O-5	Herman Nelson	O-14	Rheem/Ruud	O-25-27
Bradford White	O-5	Hill Refrigeration	O-14-15	Scherba Ind.	O-27
Broan	O-5	Honeywell Air Cleaner	O-15	Sears/Whirlpool	O-27
Bryant/Carrier	O-5-6	Hussman	O-15	Singer	O-27
Bryant/Payne	O-6	IEC	O-15	Skymark	O-28
Buck Stove	O-6	ILG	O-15	Snyder/Arco	O-28
Butler Ventilator	O-6	Inter City	O-16-17	State Ind.	O-28
Camco	O-6	Interthem-Addison	O-17	Taco	O-28
Carrier	O-6-8	ITT Reznor	O-17	Tappan	O-28
Carrier/Bryant	O-8	Jakel	O-17	Tecumseh	O-28
Carrier/Whirlpool	O-8	Janitrol	O-17	Thermador (Tradewinds)	O-28
Champion Cooler	O-8	Jenn Air	O-18	Thermal Transfer	O-28
Chromalox	O-8	Johnson Furnace	O-18	Tjernlund	O-29
Coleman	O-8	Keeprite	O-18	Trane	O-29-31
Consolidated Industries	O-8	Kelvinator	O-18	Tyler	O-31-32
Copeland	O-9	Krack Refrigeration	O-18	Various OEM's	O-32
Cornelius	O-9	Kramer/Trenton	O-18-19	Warren	O-32
Duotherm	O-9-10	Larkin Coil	O-19	Weil McLain	O-32
Economite/Mid-Continent Gas Burner	O-10	Lear Siegler	O-19	West Bend/McGraw Edison	O-32
Evans/Armstrong/LSI Home	O-10	Lennox	O-19-21	Westinghouse	O-32
Evcon	O-10	Liebert	O-21	Westinghouse/Small Motor Division	O-32
Excel Comfort	O-10	Lomanco	O-22	Williamson	O-32
Fasco	O-10	Loren Cook	O-22	Witt	O-32
Fedders	O-11	Magic Chef	O-22	York	O-32-34
		Mathiesen	O-22		

## DIMENSIONS



- Shaft diameter is 1/2 inch on all motors unless otherwise noted.
- \* "B" dimension is the center to center of resilient ring dimension or the overall length of the shell and end shields if the motor does not have resilient rings.

### 20th Century

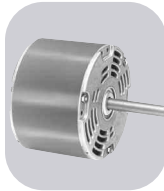


MARS NO.	MFG. NO.	HP	VOLTS	RPM/SPD	ROT	AMPS	DIMENSIONS		
							A	B	C
A086	-	1/25	115	3200/1	CW	1.3	-	-	-

3.3 inch, Shaded pole motor

Replaces: JA1N065, 7021-5239, JA1N062, JA1N069, 7021-5853, 7021-7104, 70217104, 70215853, Rheem 703020 **FASCO**

### Air America Corp



MARS NO.	MFG. NO.	HP	VOLTS	RPM/SPD	ROT	AMPS	DIMENSIONS		
							A	B	C
D1028	-	1/8	115	1050/1	CW	3.3	2.50	3.50	-

5 inch, Shaded pole motor, sleeve bearing

Replaces: A0510B2008 **FASCO**

### Air Plus



MARS NO.	MFG. NO.	HP	VOLTS	RPM/SPD	ROT	AMPS	DIMENSIONS		
							A	B	C
A087	-	1/6	115/230	2400/1	CCW	2.8/1.1	-	-	-

3.3 inch, PSC, sleeve bearing, 50/60Hz

Replaces: 7062-4687, 7062-3496 **FASCO**

### Aladdin Steel



MARS NO.	MFG. NO.	HP	VOLTS	RPM/SPD	ROT	AMPS	DIMENSIONS		
							A	B	C
A120	-	1/40	120	3000/2	CW	1.1	-	-	-

Shaded pole, ball bearing

Replaces: 230-1460, 7002-2983 **FASCO**

### Amana

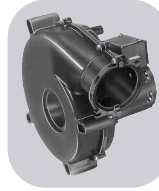


MARS NO.	MFG. NO.	HP	VOLTS	RPM/SPD	ROT	AMPS	DIMENSIONS		
							A	B	C
A129	-	1/20	115	3250/1	CW	1.95	-	-	-

3.3 inch, Shaded pole

Replaces: Amana, 7021-9064, 7021-9259 **FASCO**

### Amana



MARS NO.	MFG. NO.	HP	VOLTS	RPM/SPD	ROT	AMPS	DIMENSIONS		
							A	B	C
A158	-	1/25	115	1550/2	CW	0.70	-	-	-

3.3 inch, PSC, sleeve bearing

Replaces: Amana, 7062-3151 **FASCO**

### Amana



MARS NO.	MFG. NO.	HP	VOLTS	RPM/SPD	ROT	AMPS	DIMENSIONS		
							A	B	C
A160	-	1/30	115	3000/1	CW	1.6	2.50	3.50	-

3.3 inch, Shaded pole sleeve bearing

Replaces: Amana 7002-2407 **FASCO**

### Amana

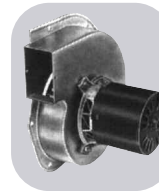


MARS NO.	MFG. NO.	HP	VOLTS	RPM/SPD	ROT	AMPS	DIMENSIONS		
							A	B	C
A180	-	1/30	115	3400/1	CCW	1.8	2.50	3.50	-

3.3 inch, Shaded pole, ball bearing

Replaces: 7021-9625, 20190601 **FASCO**

### Amana



MARS NO.	MFG. NO.	HP	VOLTS	RPM/SPD	ROT	AMPS	DIMENSIONS		
							A	B	C
A185	-	1/30	115	3000/1	CW/SE	1.15	2.50	3.50	-

3.3 inch, Shaded pole, sleeve bearing

Replaces: 7021-9316, 105854-04 **FASCO**

### Amana

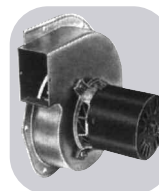


MARS NO.	MFG. NO.	HP	VOLTS	RPM/SPD	ROT	AMPS	DIMENSIONS		
							A	B	C
A280	-	1/25	115	3000/1	CW/SE	1.5	2.50	3.50	-

3.3 inch, Shaded pole, sleeve bearing

Replaces: 7021-7794, D986868 **FASCO**

### Amana

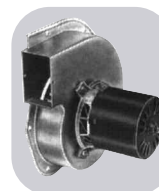


MARS NO.	MFG. NO.	HP	VOLTS	RPM/SPD	ROT	AMPS	DIMENSIONS		
							A	B	C
A286	-	1/35	208/230	3125/1	CW	0.60	-	3.50	-

3.3 inch, Shaded pole, sleeve bearing

Replaces: 7021-9398, 11096904 **FASCO**

### Amana



MARS NO.	MFG. NO.	HP	VOLTS	RPM/SPD	ROT	AMPS	DIMENSIONS		
							A	B	C
A287	-	1/25	115	3000/1	CW	1.15	-	-	-

3.3 inch, Shaded pole, sleeve bearing

Replaces: 7021-9655, 10585405 **FASCO**

# One-On-One™ Direct Replacement Motors

ONE-ON-ONE

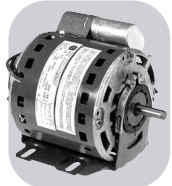


## Amana

MARS NO.	MFG. NO.	HP	VOLTS	RPM/SPD	ROT	AMPS	DIMENSIONS		
							A	B	C
A289	-	1/32	208/230	3125/1	CW	0.75	-	-	-

Shaded pole, ball bearing

Replaces: 7058-0081, 20351402



## American Air Filter

MARS NO.	MFG. NO.	HP	VOLTS	RPM/SPD	ROT	AMPS	DIMENSIONS		
							A	B	C
03134	5KCP39KGB909S	1/8	115	700/1	CW/OSE	2.0	1.50	6.50	-

PSC, ball bearing, 6@370V capacitor required (MARS # 12006)

Replaces: 5KCP36KG246S, 5KCP36KG317S, 5KCP36KG583S, 5KCP38PG200S

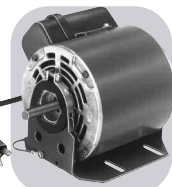


## American Air Filter

MARS NO.	MFG. NO.	HP	VOLTS	RPM/SPD	ROT	AMPS	DIMENSIONS		
							A	B	C
D1065	-	1/6	277	1600/1	CCW	0.90	2.50	3.33	-

5 inch, PSC, sleeve bearing, 4@370V capacitor required (MARS # 12004)

Replaces: ZCAABWY15141, IWCQ5827, 5KCP29DK3697T



## American Air Filter

MARS NO.	MFG. NO.	HP	VOLTS	RPM/SPD	ROT	AMPS	DIMENSIONS		
							A	B	C
D827	-	1/8	115	700/1	CCW	2.5	2.00	5.50	-

5.6 inch, PSC, ball bearing, 6@370V capacitor required (MARS # 12006)

Replaces: 7-150444-02



## American Water Heater

MARS NO.	MFG. NO.	HP	VOLTS	RPM/SPD	ROT	AMPS	DIMENSIONS		
							A	B	C
W1	-	1/25	115	3210/1	CCW	1.9	-	-	-

Shaded pole, sleeve bearing, water heater draft inducer

Replaces: 7021-10060, 3000288

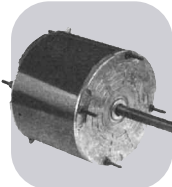


## A O Smith/Century

MARS NO.	MFG. NO.	HP	VOLTS	RPM/SPD	ROT	AMPS	DIMENSIONS		
							A	B	C
20884	-	1/8, 1/6, 1/5, 1/4, 1/3	460	825/1	REV	1.0	6.50	5.30	0.50

5.5 inch, Outdoor Condenser Fan, ball bearing, TEAO, 7.5 MFD @370 cap required

Replaces: ORM4688BF

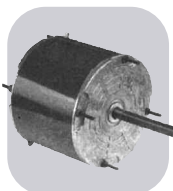


## A O Smith/Century

MARS NO.	MFG. NO.	HP	VOLTS	RPM/SPD	ROT	AMPS	DIMENSIONS		
							A	B	C
D5488	-	1/6-1/8	208-230	825/1	REV	1.0	6.63	4.00	-

5.6 inch PSC, ball bearing, 4 drilled & tapped holes in shell, totally enclosed

Replaces: ORM5488B



## A O Smith/Century

MARS NO.	MFG. NO.	HP	VOLTS	RPM/SPD	ROT	AMPS	DIMENSIONS		
							A	B	C
D5489	-	1/3-1/4	208-230	825/1	REV	1.8	6.63	4.75	-

5.6 inch, PSC, ball bearing, 4 drilled & tapped holes in shell, totally enclosed

Replaces: ORM5488B



## A O Smith/Century

MARS NO.	MFG. NO.	HP	VOLTS	RPM/SPD	ROT	AMPS	DIMENSIONS		
							A	B	C
W2	-	1/14	115	3275/1	CW	2.3	-	-	-

3.3 inch, Shaded pole, ball bearing, water heater draft inducer

Replaces: 7021-10770, 183505-000

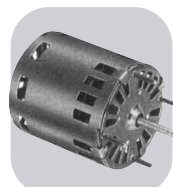


## A O Smith/Century

MARS NO.	MFG. NO.	HP	VOLTS	RPM/SPD	ROT	AMPS	DIMENSIONS		
							A	B	C
W4	-	1/20	115	3300/1	CCW	1.8	-	-	-

3.3 inch, Shaded pole, sleeve bearing, water heater draft inducer

Replaces: 7021-10910, 183381-000



## Aprilaire

MARS NO.	MFG. NO.	HP	VOLTS	RPM/SPD	ROT	AMPS	DIMENSIONS		
							A	B	C
D1110	-	1/55	115	1300/1	CW	0.70	1.88	3.63	0.25

3.3 inch, Shaded pole, ball bearing, 1/4 inch dia. shaft

Replaces: 7163-8633, 10002351

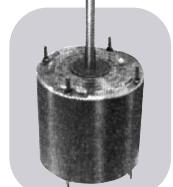


## Aprilaire

MARS NO.	MFG. NO.	HP	VOLTS	RPM/SPD	ROT	AMPS	DIMENSIONS		
							A	B	C
D1114	-	1/11	115	1250/1	CW	0.50	3.13	2.50	-

3.3 inch, Shaded pole, sleeve bearing, 1/4 inch dia shaft

Replaces: 7163-7448, 33110076



## Arkla

MARS NO.	MFG. NO.	HP	VOLTS	RPM/SPD	ROT	AMPS	DIMENSIONS		
							A	B	C
D795	-	1/3	115	825/1	REV	6.1	6.00	5.75	-

3.3 inch, PSC, ball bearing

Replaces: Gas Heat Pump K55HXSFN8042



## Armstrong

MARS NO.	MFG. NO.	HP	VOLTS	RPM/SPD	ROT	AMPS	DIMENSIONS		
							A	B	C
A155	-	1/30	115	3000/1	CCW	1.4	-	-	-

3.3 inch, Shaded pole, ball bearing

Replaces: 7021-10046



## Bohn



MARS NO.	MFG. NO.	HP	VOLTS	RPM/SPD	ROT AMPS	DIMENSIONS		
						A	B	C
09930	-	1/20	115	1550/1	CW SE	2.0	3.00	3.00

3.3 inch diameter, open 5/16 inch shaft, shaded pole with lyall plug

Replaces: AO Smith AO1124 Bohn 5KSM59JSK143 5008SS  
Fasco D1124, Magentek 572



## Bohn



MARS NO.	MFG. NO.	HP	VOLTS	RPM/SPD	ROT AMPS	DIMENSIONS		
						A	B	C
09931	-	1/15	230	1550/1	CW SE	0.57	3.00	3.50

3.3 inch diameter, open 5/16 inch shaft, shaded pole with lyall plug

Replaces: AO Smith AO1126 Bohn 5KSM59S262AS 5034MS  
5008TS Fasco D1126 Magnetek 573



## Bohn



MARS NO.	MFG. NO.	HP	VOLTS	RPM/SPD	ROT AMPS	DIMENSIONS		
						A	B	C
D1124	-	1/20	115	1550/1	CW	2.1	3.00	3.00 0.31

3.3 inch Shaded pole, sleeve bearing, 5/16 inch dia. shaft, shell turbo 68, low temp. oil (-40°F)

Replaces: 5KSM59JSK143S & 5KSM59JS5036S



## Bohn



MARS NO.	MFG. NO.	HP	VOLTS	RPM/SPD	ROT AMPS	DIMENSIONS		
						A	B	C
D1126	-	1/15	208-230	1550/1	CCW	1.1	3.00	3.50 0.31

3.3 inch Shaded pole, sleeve bearing, shell turbo 68, low temp. oil (-40°F), 5/16 inch dia. Shaft

Replaces: 5KSM59LS2262AS



## Bohn



MARS NO.	MFG. NO.	HP	VOLTS	RPM/SPD	ROT AMPS	DIMENSIONS		
						A	B	C
D1125	-	1/12	208-230	1550/1	CW	0.50	2.63	3.75 0.31

3.3 inch PSC, sleeve bearing, 4@370V capacitor included, bolt circle 3.15", 5/16 inch dia. Shaft

Replaces: 7190-0442



## Bradford White



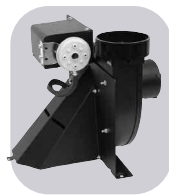
MARS NO.	MFG. NO.	HP	VOLTS	RPM/SPD	ROT AMPS	DIMENSIONS		
						A	B	C
W5	-	1/14	115	3275/1	CW	2.5	-	-

3.3 inch Shaded pole, ball bearing, water heater draft inducer

Replaces: 7021-10712, 239-42133-00B



## Bradford White



MARS NO.	MFG. NO.	HP	VOLTS	RPM/SPD	ROT AMPS	DIMENSIONS		
						A	B	C
W6	-	1/15	115	3000/1	CCW	2.2	-	-

3.3 inch Shaded pole, sleeve bearing, water heater draft inducer

Replaces: 239-4061 4-00C



## Broan



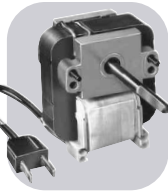
MARS NO.	MFG. NO.	HP	VOLTS	RPM/SPD	ROT AMPS	DIMENSIONS		
						A	B	C
K610	-	1/60	115	3000/2	CCW	0.88 - 0.68	1.30	-

Shaded pole, sleeve bearing, 5/23 inch dia. Shaft

Replaces: Motor 30080011 Model Y2-52000



## Broan



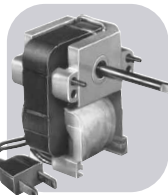
MARS NO.	MFG. NO.	HP	VOLTS	RPM/SPD	ROT AMPS	DIMENSIONS		
						A	B	C
K612	-	1/65	115	3000/1	CW	0.80	2.70	-

Shaded pole, sleeve bearing, 1/4 inch dia shaft

Replaces: Model 162 (Before 1980)



## Broan



MARS NO.	MFG. NO.	HP	VOLTS	RPM/SPD	ROT AMPS	DIMENSIONS		
						A	B	C
K611	-	1/100	115	3000/1	CCW	0.67	2.45	-

Shaded pole, sleeve bearing, 1/4 inch dia shaft

Replaces: Model 162 (After 1980)



## Broan



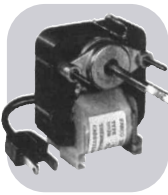
MARS NO.	MFG. NO.	HP	VOLTS	RPM/SPD	ROT AMPS	DIMENSIONS		
						A	B	C
D1087	-	1/12	115	1050/1	CW	2.9	2.33	2.63 0.50

5 inch Shaded pole, sleeve bearing

Replaces: 99-08-0178, 7151-3160



## Broan



MARS NO.	MFG. NO.	HP	VOLTS	RPM/SPD	ROT AMPS	DIMENSIONS		
						A	B	C
K110	-	1/75	115	3000/1	CCW	0.90	2.37	- 0.31

Shaded pole, sleeve bearing, 5/23 inch dia. shaft

Replaces: 99-08-0165, 670A



## Bryant/Carrier



MARS NO.	MFG. NO.	HP	VOLTS	RPM/SPD	ROT AMPS	DIMENSIONS		
						A	B	C
D803	-	1/3 - 1/4	230	1075/2	REV	2.6 - 2.2	3.50	4.50

5.6 inch PSC, sleeve bearing

Replaces: K55HXLKK-5918 HC41VB701



## Bryant/Carrier



MARS NO.	MFG. NO.	HP	VOLTS	RPM/SPD	ROT AMPS	DIMENSIONS		
						A	B	C
D1179	-	1/30	115	3000/1	CW	1.5	2.00	3.50 .31

3.3 inch Shaded pole, sleeve bearing, 5/16 inch dia. shaft

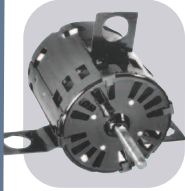
Replaces: BDP P251-2916 FRANKLIN 8251510360



# One-On-One™ Direct Replacement Motors

ONE-ON-ONE

## Bryant/Carrier

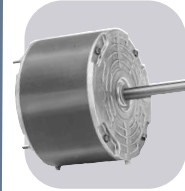


MARS NO.	MFG. NO.	HP	VOLTS	RPM/SPD	ROT AMPS	DIMENSIONS		
						A	B	C
D1180	-	1/20	115	3300/1	CW	1.9	2.13	3.63 0.31

3.3 inch Shaded pole, sleeve bearing, 5/16 inch dia. Shaft

Replaces: Carrier HC27UE120, BDP 398A, BDP P251-2307, U.E. JAIP053N, UE Stock 580 **FASCO**

## Bryant/Payne



MARS NO.	MFG. NO.	HP	VOLTS	RPM/SPD	ROT AMPS	DIMENSIONS		
						A	B	C
D847	-	1/8	208-230	1125/1	CCW	0.90	3.50	3.75 0.50

5.6 inch, PSC, sleeve bearing

Replaces: K1543HC35VE-230 KA55CGD-9658 **FASCO**

## Buck Stove



MARS NO.	MFG. NO.	HP	VOLTS	RPM/SPD	ROT AMPS	DIMENSIONS		
						A	B	C
D1138	-	1/50 - 1/80 - 1/140	115	1500/3	CW	0.90-0.60-0.50	2.50	4.00 0.31

3.3 inch, Shaded pole, sleeve bearing, 5/16 inch dia. shaft

Replaces: R22CCW270ZD 7163-6045 **FASCO**

## Buck Stove



MARS NO.	MFG. NO.	HP	VOLTS	RPM/SPD	ROT AMPS	DIMENSIONS		
						A	B	C
D1139	-	1/50 - 1/80 - 1/125	115	1500/3	CW	0.88	2.50	2.81 0.31

3.3 inch, Shaded pole, sleeve bearing, 5/16 inch dia. shaft

Replaces: R22CW206MD **FASCO**

## Butler Ventilator

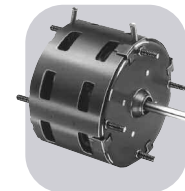


MARS NO.	MFG. NO.	HP	VOLTS	RPM/SPD	ROT AMPS	DIMENSIONS		
						A	B	C
D1066	-	1/10	115	1050/1	CW	3.6	2.75	3.88 0.50

5 inch, Shaded pole, sleeve bearing

Replaces: 846PY4V, 2414 **FASCO**

## Camco



MARS NO.	MFG. NO.	HP	VOLTS	RPM/SPD	ROT AMPS	DIMENSIONS		
						A	B	C
D1119	-	1/90	240	1500/1	CCW	0.34	1.50	2.25 -

3.3 inch, Shaded pole, sleeve bearing, 1/4 inch dia. shaft

Replaces: Universal JBIP04410V, Electrohome 2868-405-173, Rotom R302 **FASCO**

## Carrier

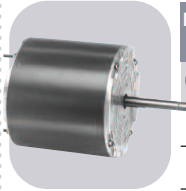


MARS NO.	MFG. NO.	HP	VOLTS	RPM/SPD	ROT AMPS	DIMENSIONS		
						A	B	C
10234	-	1/10	208-230	1100/1	CCW OSE	0.77	1.80	3.80 0.50

5 1/2 inch diam., totally enclosed, ball bearing, capacitor required 5 MFD @ 370V (MARS No. 12005, 12905), CW OSE

Replaces: Carrier HC33GE233 **UTAS**

## Carrier

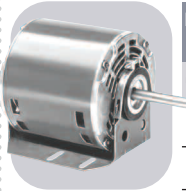


MARS NO.	MFG. NO.	HP	VOLTS	RPM/SPD	ROT AMPS	DIMENSIONS		
						A	B	C
03474	5KCP39HGWB04S	1/4	460/400	1100/900/1	CW	0.80	2.5	4.48 0.50

5.5 inch diameter, enclosed, ball bearings, 5 MFD @ 370V

Replaces: HC39GE464, 5KCP39HGS239S, Genteq # 3S051 **genteq**

## Carrier



MARS NO.	MFG. NO.	HP	VOLTS	RPM/SPD	ROT AMPS	DIMENSIONS		
						A	B	C
03476	5KCP39PGWB12S	1	208-230	1620/1	CW	4.9	2.5	6.48 0.625

5.5 inch diameter, open construction, ball bearings, 15 MFD @ 370V

Replaces: HC52ER230, 5KCP39PGU661CS, Genteq # 3S053 **genteq**

## Carrier

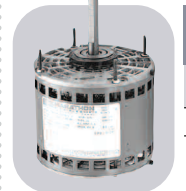


MARS NO.	MFG. NO.	HP	VOLTS	RPM/SPD	ROT AMPS	DIMENSIONS		
						A	B	C
03166	5KCP39MGP041S	1/2	208-230	1075/3	CCW OSE	2.9	7.00	5.60 -

5.5 inch diam. partially enclosed, lug mount, one 2 1/2 inch resilient ring, 7.5 MFD @ 440V capacitor required (MARS 12031)

Replaces: 5KCP37PG190S, 5KCP37PG361S Carrier HC445L230, HC445L230 Fasco D804, Universal 655 **genteq**

## Carrier



MARS NO.	MFG. NO.	HP	VOLTS	RPM/SPD	ROT AMPS	DIMENSIONS		
						A	B	C
P190	5KCP49ZN9617T	1	200-230/460	1075/1	REV	6.7-6.8/3.4	4.00	11.21 0.625

5.5 inch diam. open air over, ball bearings, capacitor not included G21-913

Replaces: 5KCP49UG1007S, 5KCP49UG1027S, 5KCP49UG1028S, 5KCP49ZG171S, 5KCP49ZG189S, 5KCP49ZG190S, 5KCP49ZG24S and 5KCP49ZN9622S **genteq**

## Carrier

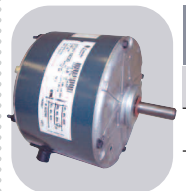


MARS NO.	MFG. NO.	HP	VOLTS	RPM/SPD	ROT AMPS	DIMENSIONS		
						A	B	C
03288	5KCP39SGU073S	1/2	200-230/460	1075/1	CCW OSE	4.6/2.3	2.92	7.31 -

5.5 inch diam. Open, lug mount, 7.5 MFD @ 370V capacitor required (MARS 12007)

Replaces: 5KCP39SGL288S **genteq**

## Carrier

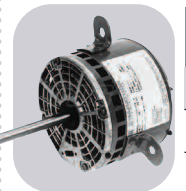


MARS NO.	MFG. NO.	HP	VOLTS	RPM/SPD	ROT AMPS	DIMENSIONS		
						A	B	C
03905	5KCP39EGY823S	1/4	208-230	1100/1	CW OSE	1.4	1.50	4.45 -

5.5 inch diam., condenser fan motor, 5 MFD @ 370V capacitor required (MARS 12005), sleeve bearing, band mounting

Replaces: HC39GE237A, 5KCP39EGS070S **genteq**

## Carrier



MARS NO.	MFG. NO.	HP	VOLTS	RPM/SPD	ROT AMPS	DIMENSIONS		
						A	B	C
X210	048A1101068	1/4	208-230	1075/2	REV	2.2	4.25	4.12 -

48Y frame, three lug mount, open air over, ball bearings, 5@370V capacitor required (MARS No. 12005)

Replaces: Emerson 3303, FASCO D843, Magnetek 514,AOS OCB1026 **marathon electric**

## Carrier

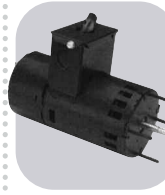


MARS NO.	MFG. NO.	HP	VOLTS	RPM/SPD	ROT	AMPS	DIMENSIONS		
							A	B	C
X222	048A1101109	1/3	230	1075/2	REV	2.6	3.00	4.75	-

48Y frame, three lug mount, open air over, ball bearings, 7.5@370V capacitor required (MARS No. 12007)  
**Replaces:** Carrier HC41VE700, HC41VE701, Emerson 3225, Magnetek 536, AOS OCB1036



## Carrier



MARS NO.	MFG. NO.	HP	VOLTS	RPM/SPD	ROT	AMPS	DIMENSIONS		
							A	B	C
D1174	-	1/15	460	3000/1	CW	0.60	2.50	6.75	0.25

3.3 inch, Shaded pole, ball bearing, does not have shaft bushing, 1/4 inch dia. shaft  
**Replaces:** Carrier HC34AU725A, Universal JB1P044NVHC24AU725



## Carrier

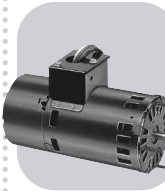


MARS NO.	MFG. NO.	HP	VOLTS	RPM/SPD	ROT	AMPS	DIMENSIONS		
							A	B	C
X405	048A1101744	1/2	208-230/460	1075/1	REV	3.6/1.8	4.00	6.88	-

48Y frame, open air over, three lug mount, ball bearings, double shaft extension 1 1/2" long by 1/2" dia. with flat each end, 7.5@440V capacitor required (MARS No. 12031)  
**Replaces:** AOS OCA1056



## Carrier



MARS NO.	MFG. NO.	HP	VOLTS	RPM/SPD	ROT	AMPS	DIMENSIONS		
							A	B	C
D1178	-	1/15	208-230	3450/1	CW	0.45	2.75	6.75	-

3.3 inch, PSC, ball bearing, 1/4 inch dia. shaft  
**Replaces:** Carrier HC680001, Fasco 7162-3829



## Carrier



MARS NO.	MFG. NO.	HP	VOLTS	RPM/SPD	ROT	AMPS	DIMENSIONS		
							A	B	C
X235	056T11D5209	1	200-230/460	1140/1	REV	6.6-6.0/3.0	2.88	10.50	-

56Y frame, three phase, open air over, belly band mount, footless, ball bearings, 70°C ambient, 5/8" shaft dia.  
**Replaces:** Carrier HD52VE214, Marathon 56T11D33



## Carrier



MARS NO.	MFG. NO.	HP	VOLTS	RPM/SPD	ROT	AMPS	DIMENSIONS		
							A	B	C
D864	-	1/6-1/8	208-230	1040/3	CW	1.3-1.2-1.1	7.25	3.75	0.50

5.6 inch, PSC, sleeve bearing, rotation determined by viewing lug end, 3@370V capacitor required (MARS # 12003)  
**Replaces:** 124279, 128560, 124276, 7126-0103, 7126-0043



## Carrier

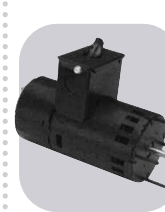


MARS NO.	MFG. NO.	HP	VOLTS	RPM/SPD	ROT	AMPS	DIMENSIONS		
							A	B	C
D455	-	1/30	115/230	3000/1	CCW	1.3-0.70	3.88	5.88	0.25

3.3 inch, Shaded pole, ball bearing, includes shaft bushing, 1/4 inch dia. shaft  
**Replaces:** Draft Booster/Flue Exhaust Switch Motors



## Carrier



MARS NO.	MFG. NO.	HP	VOLTS	RPM/SPD	ROT	AMPS	DIMENSIONS		
							A	B	C
D458	-	1/15	208-230	3000/1	CW	1.0	2.75	6.50	0.25

3.3 inch, Shaded pole, ball bearing, includes shaft bushing, 1/4 inch dia. shaft  
**Replaces:** Draft Booster/Flue Exhaust Switch Motors



## Carrier

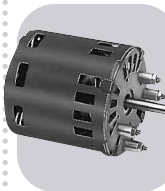


MARS NO.	MFG. NO.	HP	VOLTS	RPM/SPD	ROT	AMPS	DIMENSIONS		
							A	B	C
D456	-	1/15	115/230	3000/1	CW	2.0-1.0	2.75	6.50	0.25

3.3 inch, Shaded pole, ball bearing, includes shaft bushing, 1/4 inch dia. shaft  
**Replaces:** Draft Booster/Flue Exhaust Switch Motors



## Carrier

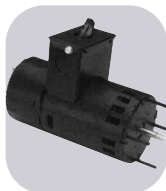


MARS NO.	MFG. NO.	HP	VOLTS	RPM/SPD	ROT	AMPS	DIMENSIONS		
							A	B	C
D463	-	1/30	208-230	3000/1	CW	0.65	2.50	3.88	0.31

3.3 inch, Shaded pole, ball bearing, 5/16 inch dia. shaft  
**Replaces:** HC24HE230



## Carrier



MARS NO.	MFG. NO.	HP	VOLTS	RPM/SPD	ROT	AMPS	DIMENSIONS		
							A	B	C
D457	-	1/15	115/230	3000/1	CCW	2.0-1.0	2.75	6.50	0.25

3.3 inch, Shaded pole, ball bearing, includes shaft bushing, 1/4 inch dia. shaft  
**Replaces:** Draft Booster/Flue Exhaust Switch Motors



## Carrier

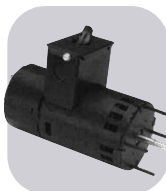


MARS NO.	MFG. NO.	HP	VOLTS	RPM/SPD	ROT	AMPS	DIMENSIONS		
							A	B	C
D1182	-	1/16	208-230	3450/1	CCW	0.57	3.33	4.50	-

3.3 inch, PSC, sleeve bearing, hall effect sensor, 5/16 inch dia. shaft  
**Replaces:** 7162-3367, HC30GB230B, K33HXCCP-915, HC30GB230



## Carrier

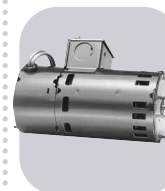


MARS NO.	MFG. NO.	HP	VOLTS	RPM/SPD	ROT	AMPS	DIMENSIONS		
							A	B	C
D458	-	1/15	208-230	3000/1	CW	1.0	2.75	6.50	0.25

3.3 inch, Shaded pole, ball bearing, includes shaft bushing, 1/4 inch dia. shaft  
**Replaces:** Draft Booster/Flue Exhaust Switch Motors



## Carrier



MARS NO.	MFG. NO.	HP	VOLTS	RPM/SPD	ROT	AMPS	DIMENSIONS		
							A	B	C
D459	-	1/15	230/460	3000/1	CW	1.2-0.60	3.00	7.00	0.25

3.3 inch, Shaded pole, ball bearing, 1/4 inch dia. shaft  
**Replaces:** HC24AU725A, JB1P044, AB1S078, JB1R039, AB1S029, S88-556



# One-On-One™ Direct Replacement Motors

ONE-ON-ONE

## Carrier



MARS NO.	MFG. NO.	HP	VOLTS	RPM/SPD	ROT	AMPS	DIMENSIONS		
							A	B	C
D844	-	1/4	230	1625/1	CW	1.5	3.00	3.50	0.50

5.6 inch, PSC, sleeve bearing, 4@370V capacitor required (MARS # 12004)  
**Replaces:** HC37ME268, 5KCP39BG7524S **FASCO**

## Carrier



MARS NO.	MFG. NO.	HP	VOLTS	RPM/SPD	ROT	AMPS	DIMENSIONS		
							A	B	C
D843	-	1/4 - 1/5	208 - 230	1075/1	REV	2.2 - 0.20	4.25	4.00	0.50

5.6 inch, PSC, sleeve bearing, 5@440V capacitor required (MARS # 12029)  
**Replaces:** F48SG6MA10, F48SG6MA16, F48SG6MA28, F48SG6MA37, F48SJ6MA28, HC37MZ220, HC39VE608, HC39ML706, HC39ME720 **FASCO**

## Carrier



MARS NO.	MFG. NO.	HP	VOLTS	RPM/SPD	ROT	AMPS	DIMENSIONS		
							A	B	C
D802	-	1/2	460	1050/1	REV	0.90	3.33	5.50	0.50

5.6 inch, PSC, ball bearing, 10@370V capacitor required (MARS # 12008)  
**Replaces:** Carrier HC44VL463A, AO Smith FEH1056S, GE 5KCP39PGH600CS **FASCO**

## Carrier



MARS NO.	MFG. NO.	HP	VOLTS	RPM/SPD	ROT	AMPS	DIMENSIONS		
							A	B	C
D838	-	3/4 - 1/2 - 1/3 - 1/4	115	1075/4	REV	11.2 - 9.7 - 7.5 - 6.4	6.50	5.25	0.50

5.6 inch, PSC, ball bearing, 20@370V capacitor required (MARS # 12014)  
**Replaces:** HC45SE116, SC435X101, HC43SE116 **FASCO**

## Carrier/Bryant



MARS NO.	MFG. NO.	HP	VOLTS	RPM/SPD	ROT	AMPS	DIMENSIONS		
							A	B	C
D803	-	1/3 - 1/4	230	1075/2	REV	2.6 - 2.2	3.50	4.50	0.50

5.6 inch, PSC, sleeve bearing  
**Replaces:** K55HXLKK-5918, HC41VB701 **FASCO**

## Carrier/Bryant



MARS NO.	MFG. NO.	HP	VOLTS	RPM/SPD	ROT	AMPS	DIMENSIONS		
							A	B	C
D1179	-	1/30	115	3000/1	CW SE	1.5	2.00	3.50	0.31

3.3 inch, Shaded pole, sleeve bearing, 5/16 inch dia. shaft  
**Replaces:** BDP P251-2916, FRANKLIN 8251510360 **FASCO**

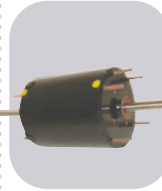
## Carrier/Bryant



MARS NO.	MFG. NO.	HP	VOLTS	RPM/SPD	ROT	AMPS	DIMENSIONS		
							A	B	C
D1180	-	1/20	115	3300/1	CW SE	1.9	2.12	3.62	0.31

3.3 inch, Shaded pole, sleeve bearing, 5/16 inch dia. Shaft  
**Replaces:** Carrier HC27UE120, BDP 398A, BDP P251-2307, U.E. JAIP053N, UE Stock 580 **FASCO**

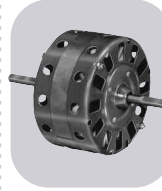
## Carrier/Whirlpool



MARS NO.	MFG. NO.	HP	VOLTS	RPM/SPD	ROT	AMPS	DIMENSIONS		
							A	B	C
D1176	-	1/15 - 1/25	115	1550/2	DS	0.90 - 0.80	4.88	4.00	0.37

3.3 inch, PSC, sleeve bearing, 3/8 inch dia. Shaft, 4@370V capacitor required (MARS # 12004)  
**Replaces:** 130096, 202466 **FASCO**

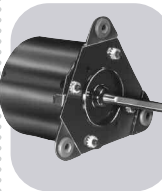
## Champion Cooler



MARS NO.	MFG. NO.	HP	VOLTS	RPM/SPD	ROT	AMPS	DIMENSIONS		
							A	B	C
D1069	-	1/10 - 1/15	115	1040/2	DS	3.5 - 2.2	3.00	2.63	0.37

5 inch, Shaded pole, sleeve bearing, 3/8 inch dia. shaft, 4@370V capacitor required (MARS # 12004)  
**Replaces:** 7151-2925, 7151-0109, MP2500 **FASCO**

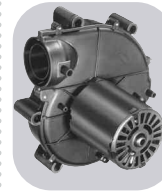
## Chromalox



MARS NO.	MFG. NO.	HP	VOLTS	RPM/SPD	ROT	AMPS	DIMENSIONS		
							A	B	C
D1118	-	1/30	240	1500/1	CW	0.60	3.50	2.81	-

Shaded pole, ball bearing, 5/16 inch dia. shaft  
**Replaces:** 2868-811-005B, 2868-505-016, 2686-511-027A **FASCO**

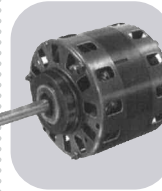
## Coleman



MARS NO.	MFG. NO.	HP	VOLTS	RPM/SPD	ROT	AMPS	DIMENSIONS		
							A	B	C
A088	-	1/25	115	3200/1	CW	1.3	-	-	-

3.3 inch, Shaded pole, sleeve bearing  
**Replaces:** 7021-5478 **FASCO**

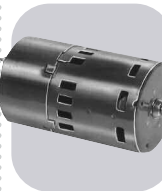
## Coleman



MARS NO.	MFG. NO.	HP	VOLTS	RPM/SPD	ROT	AMPS	DIMENSIONS		
							A	B	C
D178	-	1/8 - 1/11	115	1050/2	CW	4.5 - 3.4	4.00	3.25	0.50

5 inch, Shaded pole, sleeve bearing  
**Replaces:** Blower Motor **FASCO**

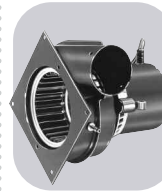
## Coleman



MARS NO.	MFG. NO.	HP	VOLTS	RPM/SPD	ROT	AMPS	DIMENSIONS		
							A	B	C
D408	-	1/150	115	3000/1	CW	0.50	1.50	5.50	0.25

Shaded pole, sleeve bearing, 1/4 inch dia. shaft  
**Replaces:** 7995-316, 7121-5906 **FASCO**

## Consolidated Industries



MARS NO.	MFG. NO.	HP	VOLTS	RPM/SPD	ROT	AMPS	DIMENSIONS		
							A	B	C
A128	-	1/50	120	3000/1	CW	0.90	-	-	-

3.3 inch, Shaded pole, sleeve bearing  
**Replaces:** 7021-6376, 7021-9404 **FASCO**



## Copeland



MARS NO.	MFG. NO.	HP	VOLTS	RPM/SPD	ROT AMPS	DIMENSIONS		
						A	B	C
10227	-	1/3	230	1625	CW OSE	2.2	1.75	5.87 0.50
1/3HP, Condenser Fan, 208-230V, 1625 RPM, TEAO, capacitor included 4 MFD @ 370V, sleeve bearing								
Replaces: 050-0108-00, 5KCP32KG2598, 5KCP32KG175, 5KCP32KG221, 6127, K55HXECE2645								



## Copeland



MARS NO.	MFG. NO.	HP	VOLTS	RPM/SPD	ROT AMPS	DIMENSIONS		
						A	B	C
10228	-	1/6	208-230	1550	CW OSE	1.1	3.07	3.69 0.50
1/6HP, Condenser Fan, 208-230V, 1550 RPM, OAO, capacitor included 3 MFD @ 370V, sleeve bearing								
Replaces: 050-0251-00, 998-0251-00, 6128, K55HSJNG-2974, 40251								



## Copeland



MARS NO.	MFG. NO.	HP	VOLTS	RPM/SPD	ROT AMPS	DIMENSIONS		
						A	B	C
10229	-	1/4	208-230	1625	CW OSE	1.5	3.07	4.32 0.50
1/4HP, Condenser Fan, 208-230V, 1625 RPM, OAO, capacitor included 5 MFD @ 370V, sleeve bearing								
Replaces: 050-0250-00, 950-0250-00, 03242, 5KCP39EG755S, 6129, K55HXJZJ-3126, 40250, OCP0250								



## Copeland



MARS NO.	MFG. NO.	HP	VOLTS	RPM/SPD	ROT AMPS	DIMENSIONS		
						A	B	C
10264	-	1/4	230	1550	CW OSE	2.1	3.00	4.20 0.50
1/4HP, Condenser Fan, 230V, 1550 RPM, ODP, capacitor included 5 MFD @ 370V, sleeve bearing								
Replaces: 050-0238-00, 5KCP-39GG357S, 6124, K55BZY-1439								

## Copeland



MARS NO.	MFG. NO.	HP	VOLTS	RPM/SPD	ROT AMPS	DIMENSIONS		
						A	B	C
10265	-	1/6	208-230	1550	REV	1.1	3.00	3.73 0.50
1/6HP, Condenser Fan, 208-230V, 1550 RPM, OAO, capacitor included 3 MFD @ 370V, sleeve bearing								
Replaces: 050-0265-00, K55PGP5104, 40265								



## Copeland



MARS NO.	MFG. NO.	HP	VOLTS	RPM/SPD	ROT AMPS	DIMENSIONS		
						A	B	C
00353	ESP-L35EM2	35W	230	1500/1	CW OSE	0.70	0.50	3.50 -
3 7/8 inch diam., cast iron unit bearing motor, end or side pad mounting, horizontal operation, 1/4" threaded shaft								
Replaces: Copeland 050-0227-02 ESP-L35EMV2, ESP-L35E22 Gem EM-33502								



## Copeland



MARS NO.	MFG. NO.	HP	VOLTS	RPM/SPD	ROT AMPS	DIMENSIONS		
						A	B	C
00503	ESP-OL50EM2	50W	230	1500/1	CW OSE	0.85	1.50	4.50 -
3 7/8 inch diam., cast iron unit bearing motor, end or side pad mounting, horizontal operation, 3/8" dia, flatted shaft								
Replaces: Copeland 050-0011-00, 050-0237-00, 050-0244-00, use 00513 for 2080 units								



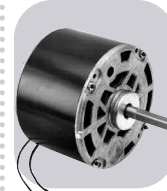
## Copeland



MARS NO.	MFG. NO.	HP	VOLTS	RPM/SPD	ROT AMPS	DIMENSIONS		
						A	B	C
03005	5KCP39PGC092S	1/3	230	825/1	CW OSE	2.4	3.50	6.10 -
5 1/2 inch diam., shell enclosed, band mount, ball bearing, 12.5 MFD @ 370V capacitor required (MARS No. 12009)								
Replaces: HC41AE117A, 5KCP39GGS336S								



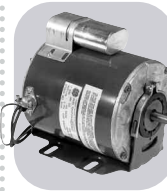
## Copeland



MARS NO.	MFG. NO.	HP	VOLTS	RPM/SPD	ROT AMPS	DIMENSIONS		
						A	B	C
03047	5KCP39GGD320S	1/4	230	1625/1	CW OSE	1.5	2.50	5.10 -
5.5 inch diam., shell enclosed band mount, 5 MFD @ 370V capacitor required (MARS No. 12005)								
Replaces: 5KCP39GG3537S, Copeland 050-0107-01 and 050-0238-00								



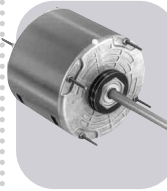
## Copeland



MARS NO.	MFG. NO.	HP	VOLTS	RPM/SPD	ROT AMPS	DIMENSIONS		
						A	B	C
03124	5KCP39KGB906AS	1/3	230	1625/1	CW OSE	3.2	1.50	7.50 -
5.5 inch diam., enclosed, 3 inch resilient base and capacitor included								
Replaces: 5KCP32KG175S and 5KCP32KG259S								



## Copeland



MARS NO.	MFG. NO.	HP	VOLTS	RPM/SPD	ROT AMPS	DIMENSIONS		
						A	B	C
D783	-	1/4	208-230	1625/1	REV	1.5	6.00	4.00 0.50
5.6 inch diam., PSC, sleeve bearing								
Replaces: 3047, 050-0238-00								



## Cornelius



MARS NO.	MFG. NO.	HP	VOLTS	RPM/SPD	ROT AMPS	DIMENSIONS		
						A	B	C
00402	ESP-L15EMJR1B1	15W	115	1500/1	CCW OSE	0.6	7.00	3.17 -
3 7/8 inch diam., cast iron unit bearing motor, 5/16" shaft with 1/4 - 20 threaded end 11 No. 8-36 mounting screws, end or side pad mounting, 13 inches external lead length with two 1/4" quick connects								
Replaces: Marathon X222, 48A1101109								



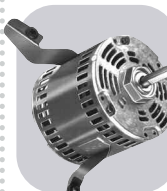
## Cornelius



MARS NO.	MFG. NO.	HP	VOLTS	RPM/SPD	ROT AMPS	DIMENSIONS		
						A	B	C
00508	ESP-OL50EM1B1	50W	115	1500/1	CW OSE	1.7	2.89	4.50 -
3 7/8 inch diam., cast iron unit bearing motor, end or side pad mounting evaporator fan motor .312 shaft dia., 2 female spade terminals at end of each wire								
Replaces: Rotom 6206								



## Duotherm



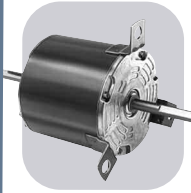
MARS NO.	MFG. NO.	HP	VOLTS	RPM/SPD	ROT AMPS	DIMENSIONS		
						A	B	C
D1080	-	1/6	115	1050/1	CW	7.9	4.00	4.50 0.50
5 inch, Shaded pole, ball bearing								
Replaces: 3-14826 100,000 BTU Furnaces								



# One-On-One™ Direct Replacement Motors

ONE-ON-ONE

## Duotherm

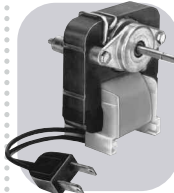


MARS NO.	MFG. NO.	HP	VOLTS	RPM/SPD	ROT	AMPS	DIMENSIONS		
							A	B	C
D1081	-	1/6 - 1/8 - 1/10	115	1625/3	REV	2.4 - 1.9 - 1.5	3.50	4.88	0.50

5 inch, PSC, sleeve bearing, 10@370V capacitor required (MARS # 12008)  
**Replaces:** 3-9650 12,000 - 13,000 BTU's 5KCP29MG40115 8743810260, 3-18440

FASCO

## Fasco

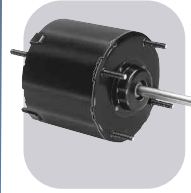


MARS NO.	MFG. NO.	HP	VOLTS	RPM/SPD	ROT	AMPS	DIMENSIONS		
							A	B	C
K100	-	1/100	115	3000/1	CW	0.71	1.11	-	-

Shaded pole, sleeve bearing, .181 inch dia. shaft  
**Replaces:** 0648-0027 Ventilator

FASCO

## Economite/Mid-Continent Gas Burner

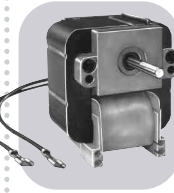


MARS NO.	MFG. NO.	HP	VOLTS	RPM/SPD	ROT	AMPS	DIMENSIONS		
							A	B	C
D1151	-	1/40	115	1500/1	CCW	1.2	3.25	2.75	0.31

3.3 inch, Shaded pole, sleeve bearing, 5/16 inch dia. shaft  
**Replaces:** AA2P026N

FASCO

## Fasco



MARS NO.	MFG. NO.	HP	VOLTS	RPM/SPD	ROT	AMPS	DIMENSIONS		
							A	B	C
K101	-	1/150	230	3000/1	CCW	0.58	1.34	-	-

Shaded pole, sleeve bearing, .217 inch dia. shaft  
**Replaces:** Model 2540 7102-0001 Motor

FASCO

## Evans/Armstrong/LSI/Home

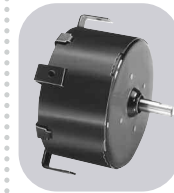


MARS NO.	MFG. NO.	HP	VOLTS	RPM/SPD	ROT	AMPS	DIMENSIONS		
							A	B	C
X211	048A170125	1	208-230	1625/2	REV	6.2	2.50	6.25	-

48Y frame, open air over, resilient ring thru-bolt mount, ball bearings, 10@370V capacitor required (MARS No.12008)  
**Replaces:** FASCO D825, GE 5KCP35G644S

genteq

## Fasco



MARS NO.	MFG. NO.	HP	VOLTS	RPM/SPD	ROT	AMPS	DIMENSIONS		
							A	B	C
D1159	-	1/130	115	1500/1	CCW	0.45	1.13	2.13	0.31

3.3 inch, Shaded pole, sleeve bearing, 5/16 inch dia. shaft  
**Replaces:** 7163-1845, VENT 656, VENT 293A, VENT PV7896

FASCO

## Evans/Armstrong/LSI/Home



MARS NO.	MFG. NO.	HP	VOLTS	RPM/SPD	ROT	AMPS	DIMENSIONS		
							A	B	C
D825	-	1-3/4	230	1625/2	REV	6.2 - 5.6	3.00	6.75	-

5.6 inch, PSC, sleeve bearing, 10@370V capacitor required (MARS # 12008)  
**Replaces:** 5KCP35SG6445

FASCO

## Fasco



MARS NO.	MFG. NO.	HP	VOLTS	RPM/SPD	ROT	AMPS	DIMENSIONS		
							A	B	C
D1160	-	1/110	115	1480/1	CW	0.58	1.50	2.13	0.31

3.3 inch, Shaded pole, sleeve bearing, 5/16 inch dia. Shaft  
**Replaces:** 7163-2593, 663, 668, 763, 768, 661

FASCO

## Evcon



MARS NO.	MFG. NO.	HP	VOLTS	RPM/SPD	ROT	AMPS	DIMENSIONS		
							A	B	C
A156	-	1/35	115	3000/1	CW	1.1	-	-	-

3.3 inch, Shaded pole, sleeve bearing  
**Replaces:** Evcon, 7021-8935

FASCO

## Fasco



MARS NO.	MFG. NO.	HP	VOLTS	RPM/SPD	ROT	AMPS	DIMENSIONS		
							A	B	C
D1162	-	1/100	115	1500/1	REV	0.60	1.00	3.50	0.31

3.3 inch, Shaded pole, sleeve bearing, 5/16 inch dia. shaft  
**Replaces:** 7163-8909 7163-1541, Model 659 Vent

FASCO

## Excel Comfort

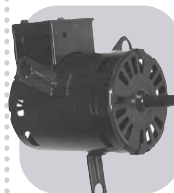


MARS NO.	MFG. NO.	HP	VOLTS	RPM/SPD	ROT	AMPS	DIMENSIONS		
							A	B	C
A100	-	1/45	115	3000/1	CW	1.21	-	-	-

Shaded pole, sleeve bearing  
**Replaces:** 7058-0280, 20093603/B

FASCO

## Fasco

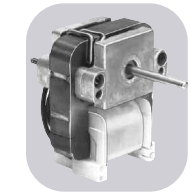


MARS NO.	MFG. NO.	HP	VOLTS	RPM/SPD	ROT	AMPS	DIMENSIONS		
							A	B	C
D1161	-	1/15 - 1/25	115	1600/1	CCW	2.9-2.0	2.00	4.25	0.31

3.3 inch, Shaded pole, sleeve bearing, 5/16 inch dia. shaft  
**Replaces:** Several Blower Applications

FASCO

## Fasco



MARS NO.	MFG. NO.	HP	VOLTS	RPM/SPD	ROT	AMPS	DIMENSIONS		
							A	B	C
K102	-	1/200	115	3000/1	CW	0.64	1.50	-	-

Shaded pole, .181 inch dia. shaft  
**Replaces:** Model 2435

FASCO

## Fasco



MARS NO.	MFG. NO.	HP	VOLTS	RPM/SPD	ROT	AMPS	DIMENSIONS		
							A	B	C
D824	-	1/4 - 1/8	115	1100/2	REV	3.2 - 2.4	3.50	5.75	0.50

5.6 inch, PSC, ball bearing, 4@370V capacitor required (MARS # 12004)  
**Replaces:** 7126-0485, 7126-0922

FASCO

## Fedders



MARS NO.	MFG. NO.	HP	VOLTS	RPM/SPD	ROT AMPS	DIMENSIONS		
						A	B	C
D441	-	1/80	115	1500/1	CCW 0.60	1.00	2.13	0.25

3.3 inch, Shaded pole, sleeve bearing, 1/4 inch dia. shaft

Replaces: Fedders, Oasis, Whirlpool Port Dehumidifiers **FASCO**

## Fedders

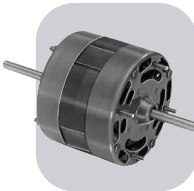


MARS NO.	MFG. NO.	HP	VOLTS	RPM/SPD	ROT AMPS	DIMENSIONS		
						A	B	C
D186	-	1/20	460	1500/1	CW 0.40	2.33	2.88	0.31

3.3 inch, Shaded pole, sleeve bearing, 5/16 inch dia. shaft

Replaces: Roof Top A/C **FASCO**

## Fedders

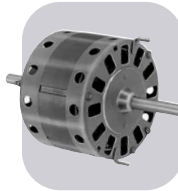


MARS NO.	MFG. NO.	HP	VOLTS	RPM/SPD	ROT AMPS	DIMENSIONS		
						A	B	C
D1012	-	1/15 - 1/20	115	1550/3	DS 2.3 - 1.9 - 1.6	3.00	3.38	0.37

4.4 inch, Shaded pole, sleeve bearing, 3/8 inch dia. shaft

Replaces: RMR, RY1302, 5206-00025-001 Y24CW50, 7190-0163 **FASCO**

## Fedders

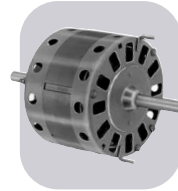


MARS NO.	MFG. NO.	HP	VOLTS	RPM/SPD	ROT AMPS	DIMENSIONS		
						A	B	C
D1010	-	1/8 - 1/12 - 1/15	115	1050/3	DS 4.4 - 3.0-2.3	3.33	3.38	0.50

5 inch, Shaded pole, sleeve bearing

Replaces: Window AC Motor S196-20-2 **FASCO**

## Fedders

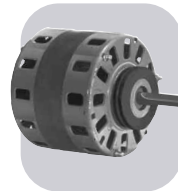


MARS NO.	MFG. NO.	HP	VOLTS	RPM/SPD	ROT AMPS	DIMENSIONS		
						A	B	C
D1011	-	1/6 - 1/12 - 1/15	208 - 230	1050/3	DS 2.5 - 1.6 - 1.2	3.33	3.25	0.50

5 inch, Shaded pole, sleeve bearing

Replaces: Window AC Motors S196-42-1, S296-161-3 **FASCO**

## Fedders



MARS NO.	MFG. NO.	HP	VOLTS	RPM/SPD	ROT AMPS	DIMENSIONS		
						A	B	C
D1016	-	1/4	230	1100/1	CW 2.0	4.13	3.88	-

5 inch, PSC, sleeve bearing

Replaces: Condenser Fan S196-18-2 **FASCO**

## Fedders



MARS NO.	MFG. NO.	HP	VOLTS	RPM/SPD	ROT AMPS	DIMENSIONS		
						A	B	C
A161	-	1/40	230	1600/1	CCW 0.60	-	-	-

3.3 inch, Shaded pole, sleeve bearing

Replaces: Brinkley 8353920103 Fedders **FASCO**

## First Company



MARS NO.	MFG. NO.	HP	VOLTS	RPM/SPD	ROT AMPS	DIMENSIONS		
						A	B	C
02350	5KCP29FK6443S	1/4	208-230	1625/2	CCW OSE 2.0	7.25	4.62	0.50

5 inch diam., shaft ends open, resilient ring mount, sleeve bearing, capacitor included

Replaces: First Company M10, M9 **genteq**

## Friedrich

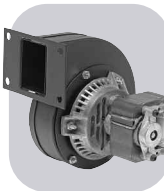


MARS NO.	MFG. NO.	HP	VOLTS	RPM/SPD	ROT AMPS	DIMENSIONS		
						A	B	C
D868	-	1/3-1/4-1/5 - 1/6-1/7	230	1075/5	CCW 2.1-1.5-1.2-1.0-0.90	2.75	4.75	0.50

5.6 inch, PSC, sleeve bearing, rotation determined by viewing lug end

Replaces: 5KCP39MG90965, 5KCP39KGE9925, 5KCP39LGD8045, 5KCP39LGG7205, 5KCP39LGM010T, 5KCP39MG7145S 5KCP39MG9679S, 5KCP39LGM011T **FASCO**

## Frymaster



MARS NO.	MFG. NO.	HP	VOLTS	RPM/SPD	ROT AMPS	DIMENSIONS		
						A	B	C
A110	-	1/70	115	3200/1	CW 0.76	-	-	-

Shaded pole, ball bearing, 50/60Hz

Replaces: 7021-0898 **FASCO**

## Gaffers & Sattler



MARS NO.	MFG. NO.	HP	VOLTS	RPM/SPD	ROT AMPS	DIMENSIONS		
						A	B	C
D862	-	1/2 - 1/3	208 - 230	1075/2	DS 3.2-3.0	2.63	-	0.50

5.6 inch, PSC, sleeve bearing, 7.5@370V capacitor required (MARS # 12007)

Replaces: Roof Top A/C Direct Pak 1.5 & 2.0 EA **FASCO**

## General Electric

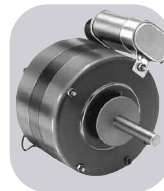


MARS NO.	MFG. NO.	HP	VOLTS	RPM/SPD	ROT AMPS	DIMENSIONS		
						A	B	C
D1050	-	1/8	230	1550/1	CW 1.1	3.00	3.25	0.50

5 inch, PSC, sleeve bearing, original motor is SP, D1050 is PSC to provide greater motor efficiency and permit closing of shaft end to prevent moisture from entering

Replaces: WW94X236SP, WW94X936PSC **FASCO**

## General Electric

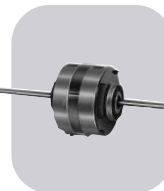


MARS NO.	MFG. NO.	HP	VOLTS	RPM/SPD	ROT AMPS	DIMENSIONS		
						A	B	C
D264	-	1/8	230	1550/1	REV 1.1	5.00	3.25	0.50

5 inch, PSC, sleeve bearing

Replaces: A/C Cond. Fan Motor **FASCO**

## General Electric



MARS NO.	MFG. NO.	HP	VOLTS	RPM/SPD	ROT AMPS	DIMENSIONS		
						A	B	C
D1086	-	1/12 - 1/25	277	1625/2	CCW 0.60-0.20	6.50	3.25	0.50

5 inch, PSC, sleeve bearing

Replaces: 5KCP29CK3586AS **FASCO**

# One-On-One™ Direct Replacement Motors

ONE-ON-ONE

## Goodman



MARS NO.	MFG. NO.	HP	VOLTS	RPM/SPD	ROT AMPS	DIMENSIONS		
						A	B	C
10230	-	1/4	208-230	1100/1	CCW OSE	1.26	3.00	4.10 0.50

5.5 inch diam., totally enclosed, ball bearing, capacitor required 5 MFD @ 370V (MARS No. 12005, 12905), CCW OSE

Replaces: Goodman 0131M00019P

## Goodman



MARS NO.	MFG. NO.	HP	VOLTS	RPM/SPD	ROT AMPS	DIMENSIONS		
						A	B	C
10232	-	1/6	208-230	810/1	CCW OSE	1.1	3.00	4.10 0.50

5.5 inch diam., totally enclosed, ball bearing, capacitor required 5 MFD @ 370V (MARS No. 12005, 12905), CCW OSE

Replaces: Goodman 0131M00060

## Goodman



MARS NO.	MFG. NO.	HP	VOLTS	RPM/SPD	ROT AMPS	DIMENSIONS		
						A	B	C
10233	-	1/8	208-230	1050/1	CCW OSE	0.70	2.50	4.10 0.50

5.5 inch diam., totally enclosed, ball bearing, capacitor required 5 MFD @ 370V (MARS No. 12005, 12905), CCW OSE

Replaces: Goodman 0131M00294

## Goodman



MARS NO.	MFG. NO.	HP	VOLTS	RPM/SPD	ROT AMPS	DIMENSIONS		
						A	B	C
10594	-	1/2	115	1130/4	CW OSE	8.1	4.00	5.10 0.50

5.5 inch diam., totally enclosed, ball bearing, capacitor required 20 MFD @ 370V (MARS No. 12014, 12914), CW OSE

Replaces: Goodman 0131F00022

## Goodman



MARS NO.	MFG. NO.	HP	VOLTS	RPM/SPD	ROT AMPS	DIMENSIONS		
						A	B	C
02250	5KCP29ECA321S	1/6	208-230	1075/1	CCW OSE	1.0	2.50	3.35 -

5 inch diam., totally enclosed, 41" leads, 5 MFD @ 370 capacitor required (MARS No. 12005)

Replaces: GOODMAN, 5KCP29ECA033S

## Goodman

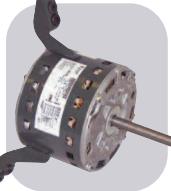


MARS NO.	MFG. NO.	HP	VOLTS	RPM/SPD	ROT AMPS	DIMENSIONS		
						A	B	C
03242	-	1/6	208-230	1075/1	CCW OSE	1.0	2.75	3.73 0.50

5.5 inch diam., condenser, 5 MFD @ 370V capacitor required (MARS No. 12005)

Replaces: G3911

## Goodman



MARS NO.	MFG. NO.	HP	VOLTS	RPM/SPD	ROT AMPS	DIMENSIONS		
						A	B	C
03912	5KCP39GGY833S	1/3	115	1075/4	CCW OSE	5.3	4.00	4.30 -

5.5 inch diam., furnace, 12.5 MFD @ 370 cap required (MARS No. 12009), sleeve bearing, torsion flex mounting

Replaces: B1340025, 5KCP39GGY022AS

## Goodman

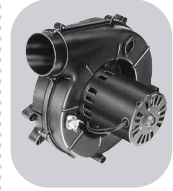


MARS NO.	MFG. NO.	HP	VOLTS	RPM/SPD	ROT AMPS	DIMENSIONS		
						A	B	C
03913	5KCP39NGY835S	1/2	115	1130/4	CCW OSE	8.8	4.00	5.30 -

5.5 inch diam., furnace, 20 MFD @ 370V cap required (MARS No. 12014), sleeve bearing, torsion flex mounting

Replaces: B1340024, 5KCP39NGV995AS

## Goodman



MARS NO.	MFG. NO.	HP	VOLTS	RPM/SPD	ROT AMPS	DIMENSIONS		
						A	B	C
A140	-	1/50	115	3400/1	CW	1.4	-	- -

Shaded pole, sleeve bearing

Replaces: 7021-9087, 7021-9000

## Goodman



MARS NO.	MFG. NO.	HP	VOLTS	RPM/SPD	ROT AMPS	DIMENSIONS		
						A	B	C
A157	-	1/35	115	3000/1	CCW	1.3	-	- -

Shaded pole, sleeve bearing

Replaces: 7002-2307

## Goodman

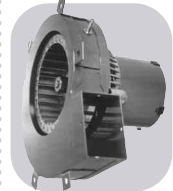


MARS NO.	MFG. NO.	HP	VOLTS	RPM/SPD	ROT AMPS	DIMENSIONS		
						A	B	C
A162	-	1/50	208-230	3000/1	CCW	0.50	-	- -

3.3 inch, Shaded pole, sleeve bearing

Replaces: 7021-8656

## Goodman



MARS NO.	MFG. NO.	HP	VOLTS	RPM/SPD	ROT AMPS	DIMENSIONS		
						A	B	C
A079	-	1/50	115	3000/1	CCW	1.1	-	- -

Shaded pole, sleeve bearing

Replaces: 74-70-21504-03-04, 74-70-21496-03-01, JAIM106, JAIM137, 7021-5615

## Goodman



MARS NO.	MFG. NO.	HP	VOLTS	RPM/SPD	ROT AMPS	DIMENSIONS		
						A	B	C
A181	-	1/30	115	3192/1	CW	1.5	-	- -

Shaded pole, ball bearing

Replaces: 7058-0136, 20044403

## Goodman



MARS NO.	MFG. NO.	HP	VOLTS	RPM/SPD	ROT AMPS	DIMENSIONS		
						A	B	C
A182	-	1/35	115	3125/1	CCW	1.3	-	- -

3.3 inch, Shaded pole, sleeve bearing

Replaces: 7002-3036, B4059000

### Goodman



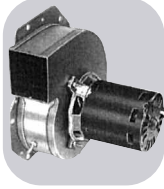
MARS NO.	MFG. NO.	HP	VOLTS	RPM/SPD	ROT AMPS	DIMENSIONS		
						A	B	C
A184	-	1/35	115	3125/1	CCW 1.55	-	-	-

3.3 inch, Shaded pole, ball bearing

Replaces: 7058-0229, B40590-01



### Goodman



MARS NO.	MFG. NO.	HP	VOLTS	RPM/SPD	ROT AMPS	DIMENSIONS		
						A	B	C
A187	-	1/20	208-230	3250/1	CW 0.80	-	-	-

3.3 inch, Shaded pole, sleeve bearing

Replaces: 7021-10006, 20028901



### Goodman



MARS NO.	MFG. NO.	HP	VOLTS	RPM/SPD	ROT AMPS	DIMENSIONS		
						A	B	C
A188	-	1/18	115	3250/1	CW 1.6	-	-	-

3.3 inch, Shaded pole, sleeve bearing

Replaces: 7021-10958, B4833000



### Goodman



MARS NO.	MFG. NO.	HP	VOLTS	RPM/SPD	ROT AMPS	DIMENSIONS		
						A	B	C
A189	-	1/24	115	3000/1	CW 1.5	-	-	-

3.3 inch, Shaded pole, sleeve bearing

Replaces: 7021-7302, D9868620



### Goodman



MARS NO.	MFG. NO.	HP	VOLTS	RPM/SPD	ROT AMPS	DIMENSIONS		
						A	B	C
A281	-	1/40	115	3000/1	CW 0.90	-	-	-

3.3 inch, Shaded pole, sleeve bearing

Replaces: 7021-8252, D6996405



### Goodman



MARS NO.	MFG. NO.	HP	VOLTS	RPM/SPD	ROT AMPS	DIMENSIONS		
						A	B	C
A284	-	1/30	208/240	3000/1	CW 0.59/0.50	-	-	-

3.3 inch, Shaded pole, sleeve bearing

Replaces: 7021-9227, D9886202



### Goodman



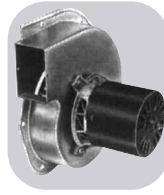
MARS NO.	MFG. NO.	HP	VOLTS	RPM/SPD	ROT AMPS	DIMENSIONS		
						A	B	C
A285	-	1/40	115	3250/2	CW 1.4	-	-	-

3.3 inch, Shaded pole, sleeve bearing

Replaces: 7021-9236, B2833002



### Goodman



MARS NO.	MFG. NO.	HP	VOLTS	RPM/SPD	ROT AMPS	DIMENSIONS		
						A	B	C
A288	-	1/30	115	3100/2	CW 1.4/0.65	-	-	-

3.3 inch, Shaded pole, ball bearing

Replaces: 7021-9727, 11177202



### Goodman



MARS NO.	MFG. NO.	HP	VOLTS	RPM/SPD	ROT AMPS	DIMENSIONS		
						A	B	C
A290	-	1/20	115	3200/2400/2	CCW 0.70	-	-	-

3.3 inch, PSC, ball bearing

Replaces: 7062-5015, 20245903



### Greenheck Fan



MARS NO.	MFG. NO.	HP	VOLTS	RPM/SPD	ROT AMPS	DIMENSIONS		
						A	B	C
X261	048A80151	1/8	115	825/1	REV 2.1	2.50	5.50	-

48Y frame, open air over, thru-bolt mount, ball bearings, automatic reset thermal protector, internal cooling fan, capacitor included

Replaces: Greenheck 300008



### Greenheck Fan



MARS NO.	MFG. NO.	HP	VOLTS	RPM/SPD	ROT AMPS	DIMENSIONS		
						A	B	C
X260	048A110251	1/6	115	1140/1	REV 2.2	2.50	5.25	-

48Y frame, open air over, thru-bolt mount, ball bearings, automatic reset thermal protector, internal cooling fan, capacitor included

Replaces: Greenheck 300010



### Greenheck Fan



MARS NO.	MFG. NO.	HP	VOLTS	RPM/SPD	ROT AMPS	DIMENSIONS		
						A	B	C
D1061	-	1/20 - 1/30 - 1/60	115	1500/3	CCW 2.0-1.7-1.4	2.75	-	0.50

3.3 inch, Shaded pole, sleeve bearing

Replaces: 7108-2425



### GSW



MARS NO.	MFG. NO.	HP	VOLTS	RPM/SPD	ROT AMPS	DIMENSIONS		
						A	B	C
W7	-	1/25	115	3200/1	CW 1.3	-	-	-

3.3 inch, Shaded pole, sleeve bearing, water heater draft inducer

Replaces: 7021-8347, 63217



### GSW



MARS NO.	MFG. NO.	HP	VOLTS	RPM/SPD	ROT AMPS	DIMENSIONS		
						A	B	C
W8	-	1/25	115	3200/1	CW 1.3	-	-	-

3.3 inch, Shaded pole, sleeve bearing, water heater draft inducer

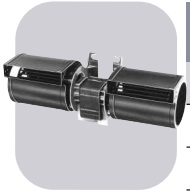
Replaces: 7021-9756, 63172



# One-On-One™ Direct Replacement Motors

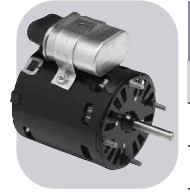
ONE-ON-ONE

## Heat N Glow



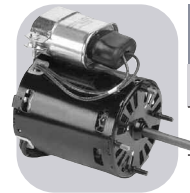
MARS NO.	MFG. NO.	HP	VOLTS	RPM/SPD	ROT	AMPS	DIMENSIONS		
A	B	C							
A133	-	1/50	115	3000/1	CCW	1.2	-	-	-
Shaded pole, sleeve bearing									
Replaces: 7002-1241									

## Heatcraft



MARS NO.	MFG. NO.	HP	VOLTS	RPM/SPD	ROT	AMPS	DIMENSIONS		
A	B	C							
D1122	-	1/16	208-230	1650/1300/1	CW	0.40	1.63	3.63	0.31
3.3 inch, PSC, sleeve bearing, 5/16 inch dia. shaft, 2@370V capacitor required (MARS # 12002)									
Replaces: 7190-2255, 25308601									

## Heatcraft



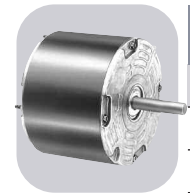
MARS NO.	MFG. NO.	HP	VOLTS	RPM/SPD	ROT	AMPS	DIMENSIONS		
A	B	C							
D1123	-	1/15	208-230	1550/1	CCW	0.50	2.63	3.88	0.31
3.3 inch, PSC, sleeve bearing, 5/16 inch dia. shaft, 50/60 Hz, 4@370V capacitor required (MARS # 12004)									
Replaces: 7190-2285, 25309101									

## Heil-Quaker



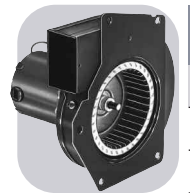
MARS NO.	MFG. NO.	HP	VOLTS	RPM/SPD	ROT	AMPS	DIMENSIONS		
A	B	C							
A064	-	1/55	115	3150/1	CW	0.70	-	-	0.31
3.3 inch, Shaded pole, sleeve bearing									
Replaces: 610172, 7021-5043									

## Heil-Quaker



MARS NO.	MFG. NO.	HP	VOLTS	RPM/SPD	ROT	AMPS	DIMENSIONS		
A	B	C							
D1071	-	1/6	208-230	1100/1	REV	0.99	2.13	-	0.50
5 inch, PSC, sleeve bearing									
Replaces: HQ 1052662EM 48HXCLW-1562									

## Heil-Quaker



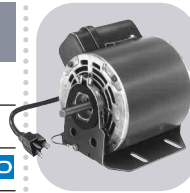
MARS NO.	MFG. NO.	HP	VOLTS	RPM/SPD	ROT	AMPS	DIMENSIONS		
A	B	C							
A148	-	-	208-230	3000/1	CCW	0.50	-	-	-
5 inch, Shaded pole, sleeve bearing									
Replaces: 7021-7617, 7021-9237									

## Heil-Quaker



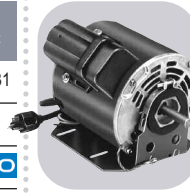
MARS NO.	MFG. NO.	HP	VOLTS	RPM/SPD	ROT	AMPS	DIMENSIONS		
A	B	C							
A151	-	1/90	230	2800/1	CW	0.30	-	-	-
3.3 inch, Shaded pole, sleeve bearing									
Replaces: HEIL QUAKER, HQ1050144									

## Herman Nelson



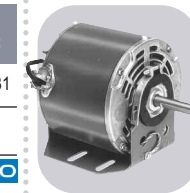
MARS NO.	MFG. NO.	HP	VOLTS	RPM/SPD	ROT	AMPS	DIMENSIONS		
A	B	C							
D827	-	1/8	115	700/1	CCW	2.5	2.00	5.50	0.50
5.6 inch, PSC, ball bearing, 6@370V capacitor required (MARS # 12006)									
Replaces: 7-150444-02									

## Herman Nelson



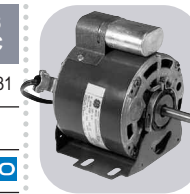
MARS NO.	MFG. NO.	HP	VOLTS	RPM/SPD	ROT	AMPS	DIMENSIONS		
A	B	C							
D829	-	1/4	115	825/1	REV	3.8	2.00	5.63	0.50
5.6 inch, PSC, sleeve bearing									

## Hill Refrigeration



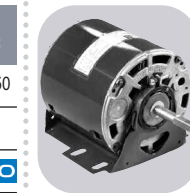
MARS NO.	MFG. NO.	HP	VOLTS	RPM/SPD	ROT	AMPS	DIMENSIONS		
A	B	C							
D801	-	1/3	208-230	1625/1	CCW	2.9	4.00	4.50	0.50
5.6 inch, PSC, sleeve bearing									
Replaces: 5KCP39KG1369S									

## Hill Refrigeration



MARS NO.	MFG. NO.	HP	VOLTS	RPM/SPD	ROT	AMPS	DIMENSIONS		
A	B	C							
03001	5KCP39KG1369S	1/3	208-230	1625/1	CW OSE	2.9	3.50	5.70	0.50
5.5 inch diam., shell only enclosed, 3 inch resilient base and capacitor included									
Replaces: Fasco D801 Hill No. PP3955B Universal 160									

## Hill Refrigeration



MARS NO.	MFG. NO.	HP	VOLTS	RPM/SPD	ROT	AMPS	DIMENSIONS		
A	B	C							
03067	5KCP39PGC910S	1	208-230	1075/1	CCW OSE	2.9	7.10	3.30	-
5.5 inch diam., open 3 inch resilient base included, ball bearing, 15 MFD @ 370V capacitor required (MARS No. 12010), shaft length 6 1/2 inch									
Replaces: Hill No. PP19162G, 5KCP39PGC030S, A.O. SMITH OHR 1106									

## Hill Refrigeration



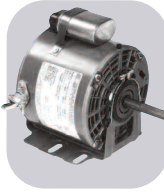
MARS NO.	MFG. NO.	HP	VOLTS	RPM/SPD	ROT	AMPS	DIMENSIONS		
A	B	C							
05095	5KSM81FFL0036	5W	115	1550/1	CW OSE	0.45	0.50	2.50	-
3.5 inch diam., totally enclosed, 3 tapped holes, shaded pole, 1/4 inch threaded shaft									
Replaces: 5KSP51AL486H, 5KSM51AG3005, Hill No. PP7577 Also Replaces: 5KSP51AL380H used by WARREN									

## Hill Refrigeration



MARS NO.	MFG. NO.	HP	VOLTS	RPM/SPD	ROT	AMPS	DIMENSIONS		
A	B	C							
05096	5KSM81FFL0036	5W	115	1550/1	CW OSE	0.45	0.50	2.50	-
3.5 inch diam., totally enclosed, 3 tapped holes, shaded pole, 1/4 inch threaded shaft with 90° Lyall plug									
Replaces: 5KSP51AL486H, 5KSM51AG3005, Hill No. PP7577 Also Replaces: 5KSP51AL380H used by WARREN									

## Hill Refrigeration



MARS NO.	MFG. NO.	HP	VOLTS	RPM/SPD	ROT AMPS	DIMENSIONS		
						A	B	C
X230	048A17O136	1/3	208-230	1625/1	CW	1.8	3.50	4.75

48Y frame, open air over, resilient base, ball bearings, capacitor included

Replaces: Magnetek 160, Stevco S3001, FASCO D801, GE 5KCP39KG1369S



## Hussman



MARS NO.	MFG. NO.	HP	VOLTS	RPM/SPD	ROT AMPS	DIMENSIONS		
						A	B	C
05119	5KSM81FFL1032	9W	115	1550	CW OSE	0.55	0.50	3.31

3.5 inch diam., enclosed, 3 tapped holes, shaded pole, threaded shaft, Lyall plug, 1/4" threaded shaft

Replaces: Hussman 47000, 58698, 5KSM51ECG5133



## Honeywell Air Cleaner



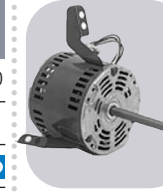
MARS NO.	MFG. NO.	HP	VOLTS	RPM/SPD	ROT AMPS	DIMENSIONS		
						A	B	C
D1054	-	1/12 - 1/20 - 1/25	115	1050/3	CW	3.1 - 2.1 - 1.5	2.50	2.63

5 inch, Shaded pole, sleeve bearing

Replaces: 190386A 5KSP29DK1906S



## IEC



MARS NO.	MFG. NO.	HP	VOLTS	RPM/SPD	ROT AMPS	DIMENSIONS		
						A	B	C
D1044	-	1/4-1/6-1/12	115	970/3	CW	6.0	8.00	4.33

5 inch, PSC, sleeve bearing

Replaces: 5KCP29DK8387S, S89210



## Hussman



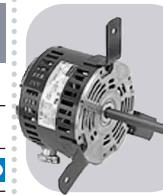
MARS NO.	MFG. NO.	HP	VOLTS	RPM/SPD	ROT AMPS	DIMENSIONS		
						A	B	C
D807	-	1/6	208 - 230	1625/1	CCW	1.2	4.88	3.75

5.6 inch, PSC, ball bearing, 4@370V capacitor required (MARS # 12004)

Replaces: 5KCP39EGC244T, 5KSP39FG4771S



## IEC



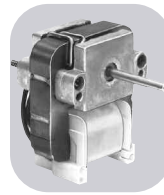
MARS NO.	MFG. NO.	HP	VOLTS	RPM/SPD	ROT AMPS	DIMENSIONS		
						A	B	C
D1048	-	1/20	277	1075/3	CW	0.50	7.25	3.88

5 inch, PSC, sleeve bearing

Replaces: 5KCP29FK8132S, S89205



## Hussman



MARS NO.	MFG. NO.	HP	VOLTS	RPM/SPD	ROT AMPS	DIMENSIONS		
						A	B	C
K114	-	1/500	115	3000/1	CCW	0.64	1.75	-

Shaded pole, sleeve bearing, equipped with KFAN6046 fan blade, .181 inch dia. shaft

Replaces: 301-5734



## IEC



MARS NO.	MFG. NO.	HP	VOLTS	RPM/SPD	ROT AMPS	DIMENSIONS		
						A	B	C
D1049	-	1/20	265	1075/3	CW	0.40	7.13	3.88

5 inch, PSC, sleeve bearing

Replaces: 5KCP29FK8388S, S89204



## Hussman



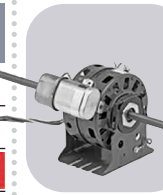
MARS NO.	MFG. NO.	HP	VOLTS	RPM/SPD	ROT AMPS	DIMENSIONS		
						A	B	C
00091	RS4BEB9E13	9W	115	1660/1	CW OSE	0.26	0.39	2.56

3.43 inch diam., enclosed, end or side pad mounting, capacitor mounted inside shell, water resistant

Replaces: RS4BEB9E16, RS4BEB9E12



## IEC



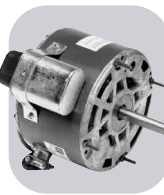
MARS NO.	MFG. NO.	HP	VOLTS	RPM/SPD	ROT AMPS	DIMENSIONS		
						A	B	C
D1059	-	1/6-1/12-1/50	115-127	1450/3	DS	2.3	8.75	3.33

5 inch, PSC, sleeve bearing

Replaces: 5KCP29DK8384S, S89208



## Hussman



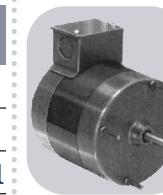
MARS NO.	MFG. NO.	HP	VOLTS	RPM/SPD	ROT AMPS	DIMENSIONS		
						A	B	C
03008	5KCP39GGC052T	1/5	230	1075/1	CW OSE	1.7	2.50	3.90

5.5 inch diam., open, thru bolt mount, capacitor included, ball bearing

Replaces: 5KCP39GG765S, 5KCP39GN765



## ILG



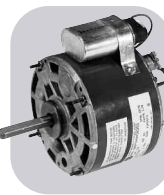
MARS NO.	MFG. NO.	HP	VOLTS	RPM/SPD	ROT AMPS	DIMENSIONS		
						A	B	C
D115	-	1/12	115 / 230	1550/1	CCW	2.5 - 1.3	2.00	4.13

4.4 inch, Shaded pole, sleeve bearing

Replaces: 78-27-721T Fasco 7108-2237



## Hussman



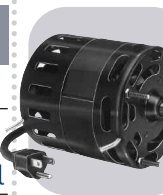
MARS NO.	MFG. NO.	HP	VOLTS	RPM/SPD	ROT AMPS	DIMENSIONS		
						A	B	C
03012	5KCP39GG5606S	1/5	208-230	1075/1	CW OSE	1.7	2.50	4.80

5.5 inch diam., shell enclosed, thru bolt mount, capacitor included

Replaces: 5KCP39GGA967T



## ILG



MARS NO.	MFG. NO.	HP	VOLTS	RPM/SPD	ROT AMPS	DIMENSIONS		
						A	B	C
D1039	-	1/10	115	1610/1	CCW	3.1	2.38	4.50

4.4 inch, Shaded pole, sleeve bearing

Replaces: 78-27-611N Fasco 7108-2171





### Inter City

MARS NO.	MFG. NO.	HP	VOLTS	RPM/SPD	ROT	AMPS	DIMENSIONS		
							A	B	C
D1167	-	1/40	208-230	3000/1	CCW	0.55	1.00	4.88	0.31

3.3 inch, Shaded pole, sleeve bearing, 5/16 inch dia. shaft

Replaces: 1708-518, 7121-5854 **FASCO**



### Inter City

MARS NO.	MFG. NO.	HP	VOLTS	RPM/SPD	ROT	AMPS	DIMENSIONS		
							A	B	C
A169	-	1/25	230	2800/1	CW	0.75	-	-	-

3.3 inch, Shaded pole, sleeve bearing

Replaces: 7021-10048, 7021-10580 **FASCO**



### Inter City

MARS NO.	MFG. NO.	HP	VOLTS	RPM/SPD	ROT	AMPS	DIMENSIONS		
							A	B	C
A067	-	1/20	115	3000/1	CW	2.6	-	-	-

3.3 inch, shaded pole, ball bearing

Replaces: 1014338, 119225-00 **FASCO**



### Inter City

MARS NO.	MFG. NO.	HP	VOLTS	RPM/SPD	ROT	AMPS	DIMENSIONS		
							A	B	C
A170	-	1/25	115	3400/1	CCW	2.3	-	-	-

3.3 inch, Shaded pole, ball bearing

Replaces: 7021-10702, 7021-10299 **FASCO**



### Inter City

MARS NO.	MFG. NO.	HP	VOLTS	RPM/SPD	ROT	AMPS	DIMENSIONS		
							A	B	C
A134	-	1/25	115	3060/1	CW	1.5	-	-	-

3.3 inch, Shaded pole, ball bearing

Replaces: 7021-9335, 7021-8735, 7021-9499, 7021-8736 **FASCO**



### Inter City

MARS NO.	MFG. NO.	HP	VOLTS	RPM/SPD	ROT	AMPS	DIMENSIONS		
							A	B	C
A171	-	1/25	115	3450/1	CCW	0.70	-	-	-

3.3 inch, PSC, ball bearing

Replaces: 7062-4783, 1011412 **FASCO**



### Inter City

MARS NO.	MFG. NO.	HP	VOLTS	RPM/SPD	ROT	AMPS	DIMENSIONS		
							A	B	C
A145	-	1/25	115	3450/1	CCW	0.70	-	-	-

3.3 inch, PSC, 4@250V capacitor included, ball bearing

Replaces: 7062-4061 **FASCO**



### Inter City

MARS NO.	MFG. NO.	HP	VOLTS	RPM/SPD	ROT	AMPS	DIMENSIONS		
							A	B	C
A172	-	1/35	115	3000/1	CW	1.6	-	-	-

Shaded pole, ball bearing

Replaces: 7002-2792, 1010975P **FASCO**



### Inter City

MARS NO.	MFG. NO.	HP	VOLTS	RPM/SPD	ROT	AMPS	DIMENSIONS		
							A	B	C
A141	-	1/25	115	2800/1	CW	1.0	-	-	-

3.3 inch, Shaded pole, ball bearing

Replaces: 7021-8741, 7021-8742, 7021-9498 **FASCO**

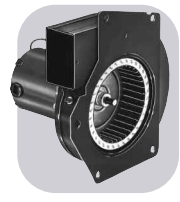


### Inter City

MARS NO.	MFG. NO.	HP	VOLTS	RPM/SPD	ROT	AMPS	DIMENSIONS		
							A	B	C
A173	-	1/18	115	3450/1	CCW	0.80	-	-	-

3.3 inch, PSC, ball bearing

Replaces: 7062-4578, 1011350 **FASCO**



### Inter City

MARS NO.	MFG. NO.	HP	VOLTS	RPM/SPD	ROT	AMPS	DIMENSIONS		
							A	B	C
A148	-	1/50	208-230	3000/1	CCW	0.50	-	-	-

3.3 inch, Shaded pole, sleeve bearing

Replaces: 7021-7617, 7021-9237 **FASCO**



### Inter City

MARS NO.	MFG. NO.	HP	VOLTS	RPM/SPD	ROT	AMPS	DIMENSIONS		
							A	B	C
A174	-	1/100	115	2350/1	CW	0.80	-	-	-

3.3 inch, Shaded pole, sleeve bearing

Replaces: 7021-9188, 1010239 **FASCO**



### Inter City

MARS NO.	MFG. NO.	HP	VOLTS	RPM/SPD	ROT	AMPS	DIMENSIONS		
							A	B	C
A151	-	1/90	230	2800/1	CW	0.30	-	-	-

3.3 inch, Shaded pole, sleeve bearing

Replaces: HEIL QUAKER, HQ1050144 **FASCO**



### Inter City

MARS NO.	MFG. NO.	HP	VOLTS	RPM/SPD	ROT	AMPS	DIMENSIONS		
							A	B	C
A175	-	1/40	115	3300/1	CCW	1.0	-	-	-

Shaded pole, sleeve bearing

Replaces: 7002-1891, 1708-600P **FASCO**



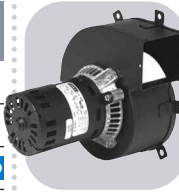


### Inter City

MARS NO.	MFG. NO.	HP	VOLTS	RPM/SPD	ROT	AMPS	DIMENSIONS		
A	B	C							
A176	-	1/25	115	3100/1	CW	2.2	-	-	-

Shaded pole, ball bearing

Replaces: 7002-2946, 1011899, 7002-3071, 1011899P



### Inter City

MARS NO.	MFG. NO.	HP	VOLTS	RPM/SPD	ROT	AMPS	DIMENSIONS		
A	B	C							
A306	-	1/30	208-230	3350/290 0/2	CCW	0.30	-	-	-

3.3 inch, PSC, sleeve bearing

Replaces: 7062-4532, 1097245

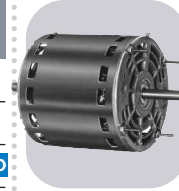


### Inter City

MARS NO.	MFG. NO.	HP	VOLTS	RPM/SPD	ROT	AMPS	DIMENSIONS		
A	B	C							
A177	-	1/36	115	3000/2	CW	1.4	-	-	-

3.3 inch, Shaded pole, ball bearing

Replaces: 7021-10363, 1011632, 7021-10597, 1011632P



### Interthem-Addison

MARS NO.	MFG. NO.	HP	VOLTS	RPM/SPD	ROT	AMPS	DIMENSIONS		
A	B	C							
D872	-	3/4 - 1/2	230	1075/2	DS	4.3 - 3.5	2.00	5.50	0.50

5.6 inch, PSC, sleeve bearing, 12.5@370V capacitor required (MARS # 12009)

Replaces: 5KCP39MGN341T



### Inter City

MARS NO.	MFG. NO.	HP	VOLTS	RPM/SPD	ROT	AMPS	DIMENSIONS		
A	B	C							
A178	-	1/30	115	3400/1	CW	1.8	-	-	-

3.3 inch, Shaded pole, ball bearing

Replaces: 7021-10928, 1013388FA

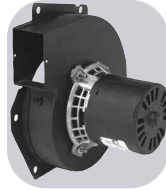


### ITT Reznor

MARS NO.	MFG. NO.	HP	VOLTS	RPM/SPD	ROT	AMPS	DIMENSIONS		
A	B	C							
D404	-	1/10	208 - 230	3000/1	REV	0.80	3.25	4.25	0.31

3.3 inch, PSC, ball bearing, 5/16 inch dia. shaft, 10@440V capacitor included

Replaces: CW175-40069, 7162-0293, CCW505-43424, 7162-0348, CCW175-40070, 7162-0294



### Inter City

MARS NO.	MFG. NO.	HP	VOLTS	RPM/SPD	ROT	AMPS	DIMENSIONS		
A	B	C							
A179	-	1/60	115	3300/1	CW	0.90	-	-	-

3.3 inch, Shaded pole, sleeve bearing

Replaces: 7021-8693, 1006168P



### ITT Reznor

MARS NO.	MFG. NO.	HP	VOLTS	RPM/SPD	ROT	AMPS	DIMENSIONS		
A	B	C							
D405	-	1/10	115	3000/1	REV	1.4	3.25	4.25	0.31

3.3 inch, PSC, ball bearing, 5/15 inch dia. shaft, 10@440V capacitor included

Replaces: CCW77162-0311, CCW175-43846, CW7162-0224, CW36860

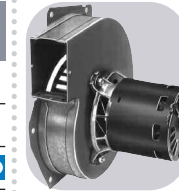


### Inter City

MARS NO.	MFG. NO.	HP	VOLTS	RPM/SPD	ROT	AMPS	DIMENSIONS		
A	B	C							
A301	-	1/100	115	2350/1	CW	0.80	-	-	-

3.3 inch, Shaded pole, sleeve bearing

Replaces: 7021-9498, 1010239P



### Jakel

MARS NO.	MFG. NO.	HP	VOLTS	RPM/SPD	ROT	AMPS	DIMENSIONS		
A	B	C							
A143	-	1/50	115	3000/1	CW	0.95	-	-	-

3.3 dia., shaded pole, sleeve bearing

Replaces: J238-138-1344, 7021-8428, 7021-8013, 7021-8924



### Inter City

MARS NO.	MFG. NO.	HP	VOLTS	RPM/SPD	ROT	AMPS	DIMENSIONS		
A	B	C							
A302	-	1/25	115	3060/1	CW	1.5	-	-	-

3.3 inch, Shaded pole, sleeve bearing

Replaces: 7021-9499, 1010324P, 7021-7700, 1708-607



### Janitrol

MARS NO.	MFG. NO.	HP	VOLTS	RPM/SPD	ROT	AMPS	DIMENSIONS		
A	B	C							
A073	-	1/40	115 - 230	3000/1	CCW	0.70/0.35	-	-	-

3.3 inch, Shaded pole, ball bearing

Replaces: 82932, 8251560133

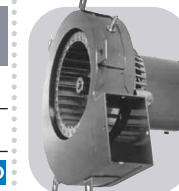


### Inter City

MARS NO.	MFG. NO.	HP	VOLTS	RPM/SPD	ROT	AMPS	DIMENSIONS		
A	B	C							
A304	-	1/25	115	3060/1	CW	1.5	-	-	-

3.3 inch, Shaded pole, sleeve bearing

Replaces: 7021-9701, 1011021



### Janitrol

MARS NO.	MFG. NO.	HP	VOLTS	RPM/SPD	ROT	AMPS	DIMENSIONS		
A	B	C							
A079	-	1/50	115	3000/1	CCW	1.1	-	-	0.50

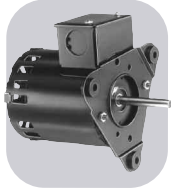
3.3 inch, Shaded pole, sleeve bearing

Replaces: 74-70-21504-03-04, 74-70-21496-03-01, JA1M106, JA1M137, 7021-5615, 7021-6804



# One-On-One™ Direct Replacement Motors

ONE-ON-ONE

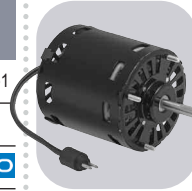


## Jenn Air

MARS NO.	MFG. NO.	HP	VOLTS	RPM/SPD	ROT AMPS	DIMENSIONS		
						A	B	C
D1173	-	1/30	115	1500/1	CW	1.2	2.50	3.88 0.31

3.3 inch, Shaded pole, ball bearing, 5/16 inch dia. shaft

Replaces: 70CR

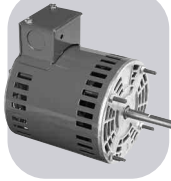


## Keeprite

MARS NO.	MFG. NO.	HP	VOLTS	RPM/SPD	ROT AMPS	DIMENSIONS		
						A	B	C
D1121	-	1/20	208-230	1550/1	CW	1.0	2.50	3.50 0.31

3.3 inch, Shaded pole, sleeve bearing, 5/16 inch dia. shaft

Replaces: 7163-8861, 1043766



## Jenn Air

MARS NO.	MFG. NO.	HP	VOLTS	RPM/SPD	ROT AMPS	DIMENSIONS		
						A	B	C
D1170	-	1/15	115	1500/1	CW	2.1	2.50	4.75 0.38

4.4 inch, Shaded pole, ball bearing, 3/8 inch dia. shaft

Replaces: 80CR



## Keeprite

MARS NO.	MFG. NO.	HP	VOLTS	RPM/SPD	ROT AMPS	DIMENSIONS		
						A	B	C
D1246	-	1/15	115	1550/1	CCW	2.3	1.75	3.50 0.38

4.4 inch, Shaded pole, sleeve bearing, 3/8 inch dia. shaft

Replaces: 81356, 7108-2206



## Jenn Air

MARS NO.	MFG. NO.	HP	VOLTS	RPM/SPD	ROT AMPS	DIMENSIONS		
						A	B	C
D377	-	1/12	115	1500/1	CCW	3.1	2.00	2.75 0.38

4.4 inch, Shaded pole, sleeve bearing, 3/8 inch dia. shaft

Replaces: 7108-2101



## Kelvinator

MARS NO.	MFG. NO.	HP	VOLTS	RPM/SPD	ROT AMPS	DIMENSIONS		
						A	B	C
00152	ESP-OL15EMJR11	15W	115	1500/1	CCW/OSE	0.60	7.00	3.17 -

3 7/8 inch diam., enclosed, 3 tapped holes or side pad mount, shaded pole, 5/16 inch diam. flattened shaft

Replaces: Kelvinator No. 24-0366 ESP-L15EMJR11

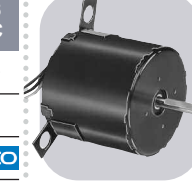


## Johnson Furnace

MARS NO.	MFG. NO.	HP	VOLTS	RPM/SPD	ROT AMPS	DIMENSIONS		
						A	B	C
A081	-	1/40	230	3000/1	CCW	0.50	-	3.50 -

3.3 inch, Shaded pole, ball bearing

Replaces: HWC Series Unit, 35035B001, 322P859, DE3L038



## Krack Refrigeration

MARS NO.	MFG. NO.	HP	VOLTS	RPM/SPD	ROT AMPS	DIMENSIONS		
						A	B	C
D1189	-	1/20	115 / 208-230	1550/1	CW	1.4-0.76	1.63	3.13 0.31

3.3 inch, Shaded pole, ball bearing, 5/16 inch dia. shaft

Replaces: 11528, 11529, JB2P046N, JA2P216N, JA2P217N, JB2P047N, 8354110940, 8254111030



## Johnson Furnace

MARS NO.	MFG. NO.	HP	VOLTS	RPM/SPD	ROT AMPS	DIMENSIONS		
						A	B	C
A085	-	1/30	230	3000/1	CCW	0.70	-	- -

3.3 inch, Shaded pole

Replaces: AO Smith 464, Johnson Furnace



## Kramer/Trenton

MARS NO.	MFG. NO.	HP	VOLTS	RPM/SPD	ROT AMPS	DIMENSIONS		
						A	B	C
D1152	-	1/20	115	1500/1	CW	1.7	2.38	2.88 0.31

3.3 inch, Shaded pole, sleeve bearing, 5/16 inch dia. shaft

Replaces: 5KSM59ES2001



## Keeprite

MARS NO.	MFG. NO.	HP	VOLTS	RPM/SPD	ROT AMPS	DIMENSIONS		
						A	B	C
D1243	-	1/20	115	1550/1	CCW	0.80	2.75	4.13 0.31

3.3 inch, PSC, sleeve bearing, 5/16 inch dia. shaft, @370V capacitor included

Replaces: 501899, 7164-1243, 7164-1854, R370



## Kramer/Trenton

MARS NO.	MFG. NO.	HP	VOLTS	RPM/SPD	ROT AMPS	DIMENSIONS		
						A	B	C
D1154	-	1/20	230	1550/1	CW	1.0	2.37	3.13 -

3.3 inch, Shaded pole, sleeve bearing, 5/16 inch dia. shaft

Replaces: JA2R140N



## Keeprite

MARS NO.	MFG. NO.	HP	VOLTS	RPM/SPD	ROT AMPS	DIMENSIONS		
						A	B	C
D1120	-	1/20	115	1550/1	CW	2.1	2.50	3.50 0.31

3.3 inch, Shaded pole, sleeve bearing, 5/16 inch dia. shaft

Replaces: 7163-8722, 1043336



## Kramer/Trenton

MARS NO.	MFG. NO.	HP	VOLTS	RPM/SPD	ROT AMPS	DIMENSIONS		
						A	B	C
D2862	-	1/2	208-230	1075/1	REV	4.0	3.00	6.50 0.50

5.6 inch, PSC, ball bearing, 7.5@370V capacitor required (MARS # 12007)

Replaces: 5KCP37PN244BS, MTG3041



## Kramer/Trenton

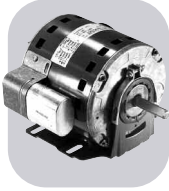


MARS NO.	MFG. NO.	HP	VOLTS	RPM/SPD	ROT AMPS	DIMENSIONS		
						A	B	C
03041	5KCP37PN244S	1/2	208-230	1075/1	CCW OSE 4.0	2.50	8.30	-

5.5 inch diam., shaft end and shell enclosed, resilient base and capacitor included

Replaces: 5KCP37PG244S and 5KCP39PGC054T

## Kramer/Trenton



MARS NO.	MFG. NO.	HP	VOLTS	RPM/SPD	ROT AMPS	DIMENSIONS		
						A	B	C
03128	5KCP39KGC100T	1/4	115/208-230	1075/1	CW OSE 3.4/1.7	2.00	6.10	-

5.5 inch diam., end shields enclosed, 3 inch resilient base and capacitor included, ball bearing

Replaces: A0510B2008

## Kramer/Trenton



MARS NO.	MFG. NO.	HP	VOLTS	RPM/SPD	ROT AMPS	DIMENSIONS		
						A	B	C
09932	253-1194	1/20	115	1550/1	CCW OSE 1.9	2.25	2.75	0.31

3.3 inch diam., open, 5/16 inch shaft, shaded pole with Lyall plug

Replaces: A.O Smith 1101 Fasco D1101 Larkin 253-1194 Magnetek 574

## Kramer/Trenton



MARS NO.	MFG. NO.	HP	VOLTS	RPM/SPD	ROT AMPS	DIMENSIONS		
						A	B	C
09933	253-1195	1/20	208-230	1550/1	CCW OSE 1.3	2.25	5.00	0.31

3.3 inch diam., open, 5/16 inch shaft, shaded pole with Lyall plug

Replaces: A.O. Smith 1103 Fasco D1103 Larkin 253-1195 Magnetek 575

## Larkin Coil



MARS NO.	MFG. NO.	HP	VOLTS	RPM/SPD	ROT AMPS	DIMENSIONS		
						A	B	C
D1101	-	1/20	115	1500/1	CCW 1.9	2.25	2.75	0.31

3.3 inch diam., Shaded pole, sleeve bearing, 5/16 inch dia. shaft, Shell Turbo 68, low temp oil (-40°F)

Replaces: Larkin No. 253-1194, Fasco No. 7163-2113

## Larkin Coil



MARS NO.	MFG. NO.	HP	VOLTS	RPM/SPD	ROT AMPS	DIMENSIONS		
						A	B	C
D1103	-	1/20	208-230	1500/1	CCW 1.15	2.25	3.00	0.31

3.3 inch, Shaded pole, sleeve bearing, 5/16 inch dia. shaft, Shell Turbo 68, low temp oil (-40°F), not a direct replacement for 253-1194, but is an acceptable substitute

Replaces: Fasco No. 7163-3371, 252-1195

## Larkin Coil



MARS NO.	MFG. NO.	HP	VOLTS	RPM/SPD	ROT AMPS	DIMENSIONS		
						A	B	C
D863	-	1/2	208-230	1075/1	REV 4.0	3.00	6.75	0.50

5.6 inch, PSC, sleeve bearing, 7.5@370V capacitor required (MARS # 12007)

Replaces: SCS0500HI-CPM120-3, 5KCP39PGH728T

## Lear Siegler

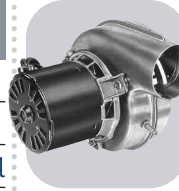


MARS NO.	MFG. NO.	HP	VOLTS	RPM/SPD	ROT AMPS	DIMENSIONS		
						A	B	C
D1046	-	1/8	115	1070/1	CW	5.1	2.25	3.00 0.50

5 inch, Shaded pole, sleeve bearing

Replaces: 305313-000-165, 7151-0073, 7151-2826

## Lennox

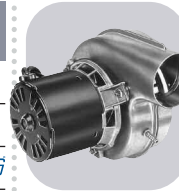


MARS NO.	MFG. NO.	HP	VOLTS	RPM/SPD	ROT AMPS	DIMENSIONS		
						A	B	C
A138	-	1/70	120	3000/1	CCW 0.70	-	-	-

3.3 inch, Shaded pole, sleeve bearing

Replaces: LENNOX, 7021-8657, 7021-8825

## Lennox



MARS NO.	MFG. NO.	HP	VOLTS	RPM/SPD	ROT AMPS	DIMENSIONS		
						A	B	C
A135	-	1/60	120	3000/1	CCW 0.70	-	-	-

3.3 inch, Shaded pole, sleeve bearing

Replaces: LENNOX, 7021-8812, 7021-8819

## Lennox



MARS NO.	MFG. NO.	HP	VOLTS	RPM/SPD	ROT AMPS	DIMENSIONS		
						A	B	C
A163	-	1/20	115	3400/1	CCW 1.8	-	-	-

3.3 inch, Shaded pole, ball bearing

Replaces: LENNOX, 7021-9450

## Lennox



MARS NO.	MFG. NO.	HP	VOLTS	RPM/SPD	ROT AMPS	DIMENSIONS		
						A	B	C
A164	-	1/50	120	3400/1	CCW 0.80	-	-	-

3.3 inch, Shaded pole, sleeve bearing

Replaces: LENNOX, 7021-9593

## Lennox



MARS NO.	MFG. NO.	HP	VOLTS	RPM/SPD	ROT AMPS	DIMENSIONS		
						A	B	C
A200	-	1/30	115	3000/1	CCW 1.95	-	-	-

Shaded pole, sleeve bearing

Replaces: 7002-2975, 31L5501

## Lennox



MARS NO.	MFG. NO.	HP	VOLTS	RPM/SPD	ROT AMPS	DIMENSIONS		
						A	B	C
A201	-	1/30	208-230	3000/1	CCW 0.65	-	-	-

3.3 inch, Shaded pole, ball bearing

Replaces: 7021-10055, 41144-002

# One-On-One™ Direct Replacement Motors

ONE-ON-ONE



## Lennox

MARS NO.	MFG. NO.	HP	VOLTS	RPM/SPD	ROT	AMPS	DIMENSIONS		
							A	B	C
A202	-	1/30	115	3400/1	CCW	1.8	-	-	-

3.3 inch, Shaded pole, ball bearing

Replaces: 7021-10602, 45037-001



## Lennox

MARS NO.	MFG. NO.	HP	VOLTS	RPM/SPD	ROT	AMPS	DIMENSIONS		
							A	B	C
A209	-	1/20	115	3200/2800/2	CCW	0.80	-	-	-

3.3 inch, PSC, ball bearing

Replaces: 7062-5441, 38M5001



## Lennox

MARS NO.	MFG. NO.	HP	VOLTS	RPM/SPD	ROT	AMPS	DIMENSIONS		
							A	B	C
A203	-	1/20	115	3400/1	CCW	1.8	-	-	-

3.3 inch, Shaded pole, ball bearing

Replaces: 7021-10841, 49L5301



## Lennox

MARS NO.	MFG. NO.	HP	VOLTS	RPM/SPD	ROT	AMPS	DIMENSIONS		
							A	B	C
A210	-	1/30	115	3000/2	CCW	1.7	-	-	-

3.3 inch, Shaded pole, ball bearing

Replaces: 7021-11063, 18M6701



## Lennox

MARS NO.	MFG. NO.	HP	VOLTS	RPM/SPD	ROT	AMPS	DIMENSIONS		
							A	B	C
A204	-	1/20	115	3400/1	CCW	1.8	-	-	-

3.3 inch, Shaded pole, ball bearing

Replaces: 7021-11406, 83L4101

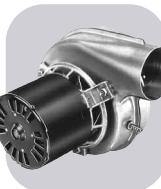


## Lennox

MARS NO.	MFG. NO.	HP	VOLTS	RPM/SPD	ROT	AMPS	DIMENSIONS		
							A	B	C
A211	-	1/15	115	3400/1	CCW	2.35	-	-	-

3.3 inch, Shaded pole, ball bearing

Replaces: 7021-11634, 81M1601



## Lennox

MARS NO.	MFG. NO.	HP	VOLTS	RPM/SPD	ROT	AMPS	DIMENSIONS		
							A	B	C
A205	-	1/20	120	3000/1	CCW	0.70	-	-	-

3.3 inch, Shaded pole, sleeve bearing

Replaces: 7021-8372, T6-2118



## Lennox

MARS NO.	MFG. NO.	HP	VOLTS	RPM/SPD	ROT	AMPS	DIMENSIONS		
							A	B	C
A213	-	1/25	115	3200/2	CCW	2.1	-	-	-

3.3 inch, Shaded pole, ball bearing

Replaces: 7021-10376, 18L0401



## Lennox

MARS NO.	MFG. NO.	HP	VOLTS	RPM/SPD	ROT	AMPS	DIMENSIONS		
							A	B	C
A206	-	1/25	115	3000/1	CW	1.5	-	-	-

3.3 inch, Shaded pole, sleeve bearing

Replaces: 7021-8473, 65204100/20J8901

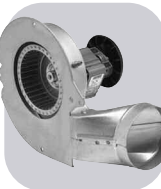


## Lennox

MARS NO.	MFG. NO.	HP	VOLTS	RPM/SPD	ROT	AMPS	DIMENSIONS		
							A	B	C
A216	-	1/25	115	3200/2	CCW	2.1	-	-	-

3.3 inch, Shaded pole, ball bearing

Replaces: 7021-10915, 68L1401

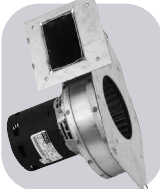


## Lennox

MARS NO.	MFG. NO.	HP	VOLTS	RPM/SPD	ROT	AMPS	DIMENSIONS		
							A	B	C
A207	-	1/28	115	3000/1	CCW	1.75	-	-	-

Shaded pole, ball bearing

Replaces: 7058-0217, 60M7901

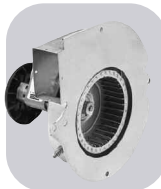


## Lennox

MARS NO.	MFG. NO.	HP	VOLTS	RPM/SPD	ROT	AMPS	DIMENSIONS		
							A	B	C
A217	-	1/16	230	3000/1	CCW	0.83	-	-	-

3.3 inch, Shaded pole, ball bearing

Replaces: 7021-11231, 25M5501



## Lennox

MARS NO.	MFG. NO.	HP	VOLTS	RPM/SPD	ROT	AMPS	DIMENSIONS		
							A	B	C
A208	-	1/28	115	3000/1	CCW	1.75	-	-	-

Shaded pole, ball bearing

Replaces: 7058-0322, 60M8101



## Lennox

MARS NO.	MFG. NO.	HP	VOLTS	RPM/SPD	ROT	AMPS	DIMENSIONS		
							A	B	C
A219	-	1/65	120	3000/1	CCW	0.70	-	-	-

3.3 inch, Shaded pole, sleeve bearing

Replaces: 7021-9262, 88J3901



## Lennox

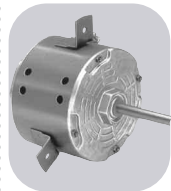


MARS NO.	MFG. NO.	HP	VOLTS	RPM/SPD	ROT AMPS	DIMENSIONS		
						A	B	C
A320	-	1/60	115	3000/1	CCW 0.80	-	-	-

3.3 inch, Shaded pole, sleeve bearing

Replaces: 7021-9646, 101154-01, 7021-9466 **FASCO**

## Lennox



MARS NO.	MFG. NO.	HP	VOLTS	RPM/SPD	ROT AMPS	DIMENSIONS		
						A	B	C
D816	-	1/3	208-230	1075/1	CW 2.2	3.75	4.00	0.50

5.6 inch, PSC, sleeve bearing

Replaces: P-8-8041-A3048, 5KCP39HG0766T **FASCO**

## Lennox



MARS NO.	MFG. NO.	HP	VOLTS	RPM/SPD	ROT AMPS	DIMENSIONS		
						A	B	C
A322	-	1/70	120	3000/2	CCW 1.1	-	-	-

3.3 inch, Shaded pole, sleeve bearing

Replaces: 7021-9884, 83L8201 **FASCO**

## Lennox



MARS NO.	MFG. NO.	HP	VOLTS	RPM/SPD	ROT AMPS	DIMENSIONS		
						A	B	C
D818	-	1/3 - 1/5 - 1/6	115	825/3	CW 7.3 - 5.1 - 3.9	3.00	6.75	0.50

5.6 inch, PSC, sleeve bearing, 12.5@370V capacitor required (MARS # 12009)

Replaces: P-8-8325, 5KCP39PGD698S **FASCO**

## Lennox



MARS NO.	MFG. NO.	HP	VOLTS	RPM/SPD	ROT AMPS	DIMENSIONS		
						A	B	C
A324	-	1/12	230	3200/1	CW 0.50	-	-	-

3.3 inch, PSC, ball bearing

Replaces: 7062-1909, 28G6601, 7062-1794 **FASCO**

## Lennox

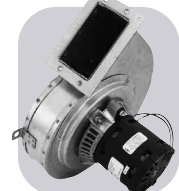


MARS NO.	MFG. NO.	HP	VOLTS	RPM/SPD	ROT AMPS	DIMENSIONS		
						A	B	C
D2816	-	1 - 1/2 - 1/3	115	1075/3	REV 11.8 - 6.3 - 3.9	4.00	7.75	0.625

5.6 inch, PSC, ball bearing, 5/8 inch dia. Shaft, 20@370V capacitor required (MARS # 12014)

Replaces: P-8-8326, 5KCP49SG1053S **FASCO**

## Lennox



MARS NO.	MFG. NO.	HP	VOLTS	RPM/SPD	ROT AMPS	DIMENSIONS		
						A	B	C
A325	-	1/10	208-230	3200/1	CW 0.60	-	-	-

3.3 inch, PSC, ball bearing

Replaces: 7062-2845, 7062-4751, 98G8701 **FASCO**

## Lennox



MARS NO.	MFG. NO.	HP	VOLTS	RPM/SPD	ROT AMPS	DIMENSIONS		
						A	B	C
02745	5KSP29KK7537S	1/5	115	1050/3	CCW OSE 7.6	2.50	4.75	-

5 inch diam., open, resilient

Replaces: GE 5KSP29KK1542S Lennox P-8-9662 **marathon electric**

## Lennox



MARS NO.	MFG. NO.	HP	VOLTS	RPM/SPD	ROT AMPS	DIMENSIONS		
						A	B	C
A330	-	1/12	208-230	3200/1	CW 0.55	-	-	-

3.3 inch, PSC, ball bearing

Replaces: 7062-5546, 7062-4517, 7062-4608, 7062-4083, 69M3301 **FASCO**

## Lennox

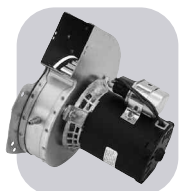


MARS NO.	MFG. NO.	HP	VOLTS	RPM/SPD	ROT AMPS	DIMENSIONS		
						A	B	C
03275	5KCP39PGS511S	3/4	115	1075/5	CCW OSE 9.0	2.50	5.48	-

5-5/8 inch diam., PSC, 5 speed, capacitor required (MARS #12021)

Replaces: GE 5KCP39PGD852S and Lennox air handlers **marathon electric**

## Lennox



MARS NO.	MFG. NO.	HP	VOLTS	RPM/SPD	ROT AMPS	DIMENSIONS		
						A	B	C
A331	-	1/10	460	3200/1	CW 0.38/0.33	-	-	-

3.3 inch, PSC, ball bearing

Replaces: 7062-5554, 69M3201, 7062-4051, 7062-4518, 97J8101 **FASCO**

## Lennox



MARS NO.	MFG. NO.	HP	VOLTS	RPM/SPD	ROT AMPS	DIMENSIONS		
						A	B	C
X411	048A11T2008	1/6	208-230	1075/1	CCW/CW OSE 1.3	6.00	3.75	-

48Y frame, totally enclosed, ball bearings, 3@370V capacitor required (MARS No. 12003)

Replaces: Lennox 47F9901, Magnetek 9402, Marathon 048A11T300, 048A11T247 **marathon electric**

## Lennox

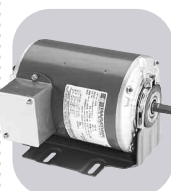


MARS NO.	MFG. NO.	HP	VOLTS	RPM/SPD	ROT AMPS	DIMENSIONS		
						A	B	C
D1198	-	1/30	115	3200/1	CCW 1.5	2.25	3.13	0.31

3.3 inch, Shaded pole, sleeve bearing, stainless steel shaft, 5/16 inch dia. shaft

Replaces: 7121-8774 **FASCO**

## Liebert



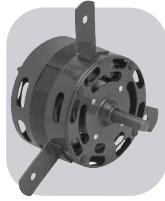
MARS NO.	MFG. NO.	HP	VOLTS	RPM/SPD	ROT AMPS	DIMENSIONS		
						A	B	C
X259	056T11O15	1/3	208-230/460	1140	- 1.9-1.8/0.9	1.50	10.06	-

48Y frame, three phase, resilient base, ball bearings

Replaces: GE 5K36PN294S **marathon electric**

# One-On-One™ Direct Replacement Motors

ONE-ON-ONE

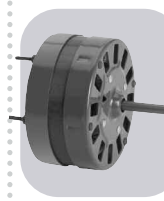


## Lomanco

MARS NO.	MFG. NO.	HP	VOLTS	RPM/SPD	ROT	AMPS	DIMENSIONS		
							A	B	C
D1008	-	1/10	115	1500/1	CW	4.4	1.75	3.00	0.50

4.4 inch, Shaded pole, sleeve bearing

Replaces: OLM6151, 322P151



## McMillan

MARS NO.	MFG. NO.	HP	VOLTS	RPM/SPD	ROT	AMPS	DIMENSIONS		
							A	B	C
D177	-	1/10 - 1/20	115	1050/2	CCW	3.9 - 1.7	3.63	2.63	0.38

5 inch, Shaded pole, sleeve bearing, 3/8 inch dia. shaft

Replaces: 6152-366/6



## Loren Cook

MARS NO.	MFG. NO.	HP	VOLTS	RPM/SPD	ROT	AMPS	DIMENSIONS		
							A	B	C
D1100	-	1/50	115	1550/900/2	CW	1.2/0.70	2.38	2.88	0.31

3.3 inch, Shaded pole, sleeve bearing, 5/16 inch dia. shaft

Replaces: 7173-1580, GC/GN 142/144



## McQuay

MARS NO.	MFG. NO.	HP	VOLTS	RPM/SPD	ROT	AMPS	DIMENSIONS		
							A	B	C
D1144	-	1/25 - 1/35 - 1/65	115	1200/3	CW	1.1-0.90-0.60	5.38	4.75	0.38

3.3 inch, PSC, sleeve bearing, 3/8 inch dia. shaft, 4@370V capacitor required (MARS # 12004)

Replaces: BA2H015

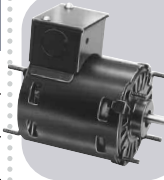


## Loren Cook

MARS NO.	MFG. NO.	HP	VOLTS	RPM/SPD	ROT	AMPS	DIMENSIONS		
							A	B	C
D1104	-	1/50	115	1550/1	DS	0.90	2.90	3.00	0.31

3.3 inch, Shaded pole, sleeve bearing, 5/16 inch dia. shaft

Replaces: 7163-6714, 5-10



## McQuay

MARS NO.	MFG. NO.	HP	VOLTS	RPM/SPD	ROT	AMPS	DIMENSIONS		
							A	B	C
D1142	-	1/15	115/230	1500/1	CW	1.7-0.90	2.50	3.50	0.31

3.3 inch, Shaded pole, sleeve bearing, 5/16 inch dia. shaft, bolt circle=3.15"

Replaces: 879-382-562-ZB-00

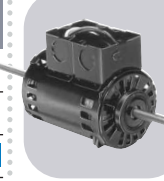


## Loren Cook

MARS NO.	MFG. NO.	HP	VOLTS	RPM/SPD	ROT	AMPS	DIMENSIONS		
							A	B	C
D1117	-	1/65	115	1590/1	CW	0.60	2.25	2.88	0.31

3.3 inch, Shaded pole, sleeve bearing, 5/16 inch dia. shaft

Replaces: 7163-7818, 615049, GC140

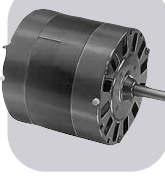


## McQuay

MARS NO.	MFG. NO.	HP	VOLTS	RPM/SPD	ROT	AMPS	DIMENSIONS		
							A	B	C
D1140	-	1/10 - 1/12 - 1/15	115	1500/3	DS	2.2-2.0-1.7	5.63	4.75	0.625

3.3 inch, PSC, sleeve bearing, 5/8 inch dia. shaft, 7.5@370V capacitor required (MARS # 12007)

Replaces: 879-382564B-00

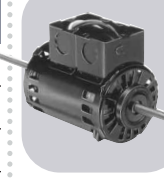


## Magic Chef

MARS NO.	MFG. NO.	HP	VOLTS	RPM/SPD	ROT	AMPS	DIMENSIONS		
							A	B	C
D1091	-	1/4	208 - 230	1075/1	CCW	2.2	2.75	4.50	0.50

5 inch, PSC, sleeve bearing

Replaces: 35035B001, 322P859, DE3L038



## McQuay

MARS NO.	MFG. NO.	HP	VOLTS	RPM/SPD	ROT	AMPS	DIMENSIONS		
							A	B	C
D1141	-	1/15 - 1/25 - 1/5	115	1000/3	DS	1.3-1.9-0.90	5.63	4.75	0.625

3.3 inch, PSC, sleeve bearing, 5/8 inch dia. shaft, 4@370V capacitor required (MARS # 12004)

Replaces: 879-382563B-00



## Magic Chef

MARS NO.	MFG. NO.	HP	VOLTS	RPM/SPD	ROT	AMPS	DIMENSIONS		
							A	B	C
A081	-	1/40	230	3000/1	CCW	0.50	-	3.50	-

3.3 inch, Shaded pole, ball bearing

Replaces: HWC Series Unit, 35035B001, 322P859, DE3L038

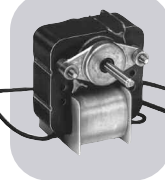


## McQuay

MARS NO.	MFG. NO.	HP	VOLTS	RPM/SPD	ROT	AMPS	DIMENSIONS		
							A	B	C
D915	-	3/4 - 1/2	460	1075/2	REV	2.5-1.6	4.50	5.33	0.625

5.6 inch, PSC, ball bearing, 5/8 inch dia. shaft, 15@370V capacitor required (MARS # 12010), not a direct replacement for 253-1194, but is an acceptable substitute

Replaces: F2417-121479, Marathon EWB48A110558AE

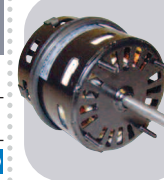


## Mathiesen

MARS NO.	MFG. NO.	HP	VOLTS	RPM/SPD	ROT	AMPS	DIMENSIONS		
							A	B	C
K161	-	1/50	115	3000/1	CCW	1.05	1.21	-	.217

Shaded pole, sleeve bearing, .217 inch dia. shaft

Replaces: Many Freezer Case Applications



## McQuay

MARS NO.	MFG. NO.	HP	VOLTS	RPM/SPD	ROT	AMPS	DIMENSIONS		
							A	B	C
09934	-	1/15	155/230	1550/1	CW OSE	2.2/1.1	2.50	3.50	0.31

3.3 inch diam., open, shaded pole, wiring harness and conductor box

Replaces: AO Smith A0142 Fasco D1142 Magnetek 342 McQuay 879-382562B-00, BA2H015



## Miami/Carey



MARS NO.	MFG. NO.	HP	VOLTS	RPM/SPD	ROT AMPS	DIMENSIONS		
						A	B	C
D534	-	1/35 - 1/100	115	1500/1	CW 1.4-0.50	1.00	2.50	0.25

3.3 inch, Shaded pole, sleeve bearing, 1/4 inch dia. shaft

Replaces: 12324L



## Nordyne



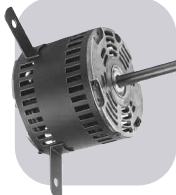
MARS NO.	MFG. NO.	HP	VOLTS	RPM/SPD	ROT AMPS	DIMENSIONS		
						A	B	C
A124	-	1/15	115	3000/1	CW 1.75	-	-	-

3.3 inch, Shaded pole, sleeve bearing

Replaces: 7021-11379, 6219290



## Miller



MARS NO.	MFG. NO.	HP	VOLTS	RPM/SPD	ROT AMPS	DIMENSIONS		
						A	B	C
D1082	-	1/8	115	1070/1	CW 6.0	3.25	4.00	0.25

5 inch, Shaded pole, sleeve bearing

Replaces: MILLER 103080002, FASCO 7152-0020 U.E. DA3F130N



## Nordyne



MARS NO.	MFG. NO.	HP	VOLTS	RPM/SPD	ROT AMPS	DIMENSIONS		
						A	B	C
A126	-	1/45	115	3000/1	CW 1.8	-	-	-

Shaded pole, ball bearing

Replaces: 7002-3158, 6219500



## Nordyne



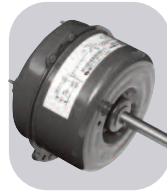
MARS NO.	MFG. NO.	HP	VOLTS	RPM/SPD	ROT AMPS	DIMENSIONS		
						A	B	C
A131	-	1/50	115	3000/1	CW 1.1	-	-	-

3.3 inch, Shaded pole, sleeve bearing

Replaces: 7021-9132, 7021-10171, 7021-10159, 7021-9661



## Nordyne



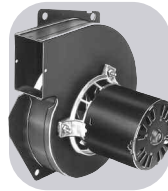
MARS NO.	MFG. NO.	HP	VOLTS	RPM/SPD	ROT AMPS	DIMENSIONS		
						A	B	C
02251	5KCP29FCA322S	1/8	208-230	1075/1	CW OSE 1.1	2.25	3.85	-

5 inch diam., totally enclosed, 41" leads, capacitor required 5 MFD @ 370 (MARS No. 12005)

Replaces: NORDYNE



## Nordyne



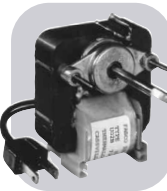
MARS NO.	MFG. NO.	HP	VOLTS	RPM/SPD	ROT AMPS	DIMENSIONS		
						A	B	C
A132	-	1/50	115	3000/1	CW 1.1	-	-	-

3.3 inch, Shaded pole, sleeve bearing

Replaces: 7021-7975, 6212850



## Nutone



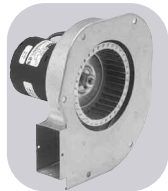
MARS NO.	MFG. NO.	HP	VOLTS	RPM/SPD	ROT AMPS	DIMENSIONS		
						A	B	C
K109	-	1/75	115	3000/1	CCW 0.9	2.37	-	.217

C-frame, shaded pole, sleeve bearing, .217 inch dia. shaft

Replaces: C-68626, C-68627, 9425F, 9415F, Vent. 9424FA, 9415FA Fan



## Nordyne



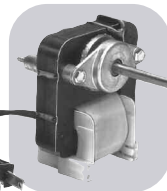
MARS NO.	MFG. NO.	HP	VOLTS	RPM/SPD	ROT AMPS	DIMENSIONS		
						A	B	C
A121	-	1/45	240	3000/1	CW 0.51	-	-	-

3.3 inch, Shaded pole, sleeve bearing

Replaces: 7021-10381, 6217930



## Nutone



MARS NO.	MFG. NO.	HP	VOLTS	RPM/SPD	ROT AMPS	DIMENSIONS		
						A	B	C
K111	-	1/120	115	3000/1	CCW 1.1	1.94	-	.217

C-frame, shaded pole, sleeve bearing, .217 inch dia. shaft

Replaces: 65878, Vent fan



## Nordyne



MARS NO.	MFG. NO.	HP	VOLTS	RPM/SPD	ROT AMPS	DIMENSIONS		
						A	B	C
A122	-	1/17	115	3000/1	CW 1.75	-	-	-

3.3 inch, Shaded pole, sleeve bearing

Replaces: 7021-11227, 6219490



## Nutone



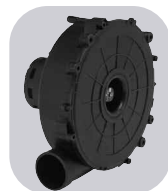
MARS NO.	MFG. NO.	HP	VOLTS	RPM/SPD	ROT AMPS	DIMENSIONS		
						A	B	C
K113	-	1/70	115	3000/1	CCW 1.2	1.15	-	.217

C-frame, shaded pole, sleeve bearing, .217 inch dia. shaft

Replaces: 63675, 9605-N, 9665-N Vent fan



## Nordyne



MARS NO.	MFG. NO.	HP	VOLTS	RPM/SPD	ROT AMPS	DIMENSIONS		
						A	B	C
A123	-	1/18	115	3300/1	CW 1.95	-	-	-

3.3 inch, Shaded pole, ball bearing

Replaces: 7021-11385, 622064



## Nutone



MARS NO.	MFG. NO.	HP	VOLTS	RPM/SPD	ROT AMPS	DIMENSIONS		
						A	B	C
D540	-	1/100	115	1500/1	CW 0.60	2.25	2.13	0.25

3.3 inch, Shaded pole, sleeve bearing, 1/4 inch dia. shaft

Replaces: Bathroom and Kitchen Vents



# One-On-One™ Direct Replacement Motors

ONE-ON-ONE

## Nutone



MARS NO.	MFG. NO.	HP	VOLTS	RPM/SPD	ROT	AMPS	DIMENSIONS		
							A	B	C
D541	-	1/100	115	1500/1	CCW	0.60	2.25	2.13	0.25
3.3 inch, Shaded pole, sleeve bearing, 1/4 inch dia. shaft									
Replaces: 26750 Bathroom and Kitchen Vents									

## Nutone



MARS NO.	MFG. NO.	HP	VOLTS	RPM/SPD	ROT	AMPS	DIMENSIONS		
							A	B	C
D1109	-	1/100	115	1500/1	CCW	0.65	1.25	2.06	0.25
3.3 inch, Shaded pole, sleeve bearing, 1/4 inch dia. shaft									
Replaces: 23405, 23388									

## Nutone



MARS NO.	MFG. NO.	HP	VOLTS	RPM/SPD	ROT	AMPS	DIMENSIONS		
							A	B	C
D1107	-	1/10	115	1550/1	CCW	3.2	1.38	4.00	0.31
3.3 inch, Shaded pole, ball bearing, 5/16 inch dia. shaft									
Replaces: Nutone 67176, 32997 UE-JA2S034N, JB2K016N									

## Patton



MARS NO.	MFG. NO.	HP	VOLTS	RPM/SPD	ROT	AMPS	DIMENSIONS		
							A	B	C
D824	-	1/4 - 1/8	115	1100/2	REV	3.2 - 2.4	3.50	5.75	0.50
5.6 inch, PSC, ball bearing, 4@370V capacitor required (MARS # 12004)									
Replaces: 7126-0485, 7126-0922									

## Penn Ventilator



MARS NO.	MFG. NO.	HP	VOLTS	RPM/SPD	ROT	AMPS	DIMENSIONS		
							A	B	C
D342	-	1/15	115	1050/1	CW	2.3	2.50	2.63	0.38
5 inch, Shaded pole, sleeve bearing, mounts on (3) P/N 0061-1518 Coleman mounts, 3/8 inch dia. shaft									
Replaces: 7151-3081, 7151-3565									

## Penn Ventilator



MARS NO.	MFG. NO.	HP	VOLTS	RPM/SPD	ROT	AMPS	DIMENSIONS		
							A	B	C
D1037	-	1/20	115	1045/1	CW	1.95	2.13	2.38	-
5 inch diam. Shaded pole, sleeve bearing, 3/8 inch x 2-1/8 inch shaft									
Replaces: 7151-2139 ROOF TOP VENT Z8									

## PMI Food Equipment/Valcun Hart



MARS NO.	MFG. NO.	HP	VOLTS	RPM/SPD	ROT	AMPS	DIMENSIONS		
							A	B	C
A142	-	1/20	115	3450/1	CW	0.70	-	-	-
3.3 inch, PSC, 4@370V capacitor required (MARS # 12004)									
Replaces: 7062-2513, 416673-00003, RHEEM, 7062-1881									

## Prestcold



MARS NO.	MFG. NO.	HP	VOLTS	RPM/SPD	ROT	AMPS	DIMENSIONS		
							A	B	C
03026	5KCP39PGC070T	1/3	208-230	828/1	REV	2.5	6.00	6.00	1/2
5.5 inch diam., shell and shaft end enclosed, strap or thru bolt mount, 10 MFD @ 370V capacitor required (MARS No. 12008)									
Replaces: Prestcold No. 401-0048-01									

## Prestcold



MARS NO.	MFG. NO.	HP	VOLTS	RPM/SPD	ROT	AMPS	DIMENSIONS		
							A	B	C
03251	5KCP39DG3304T	1/6	115	1075/1	CCW OSE	2.3	4.00	4.30	1/2
5.5 inch diam., open 2 1/4 inch resilient rings, 5 MFD @ 370V capacitor required (MARS No. 12005)									
Replaces: Prestcold No. 401-0037-01									

## Prestcold



MARS NO.	MFG. NO.	HP	VOLTS	RPM/SPD	ROT	AMPS	DIMENSIONS		
							A	B	C
03252	5KCP39CGT945S	1/6	208-230	1075/1	CCW OSE	0.90	4.00	4.30	1/2
5.5 inch diam., open 2 1/4 inch resilient rings, 5 MFD @ 370V capacitor required (MARS No. 12005)									
Replaces: Prestcold No. 401-0039-01									

## Prestcold



MARS NO.	MFG. NO.	HP	VOLTS	RPM/SPD	ROT	AMPS	DIMENSIONS		
							A	B	C
03272	5KCP39FGT946S	1/4	208-230	1075/1	CCW OSE	1.5	4.00	4.50	1/2
5.5 inch diam., open 2 1/4 inch resilient rings, 5 MFD @ 370V capacitor required (MARS No. 12005)									
Replaces: Prestcold No. 401-0043-01									

## Prestcold



MARS NO.	MFG. NO.	HP	VOLTS	RPM/SPD	ROT	AMPS	DIMENSIONS		
							A	B	C
4306	5KH39QN5537X	1/4	230	1725/1	REV	2.5	1.50	6.40	1/2
5.5 inch diam., open 3 inch resilient base included, 1.35 SF, split phase									
Replaces: Prestcold No. 401-0044-01, GE 5XBG019									

## Prestcold



MARS NO.	MFG. NO.	HP	VOLTS	RPM/SPD	ROT	AMPS	DIMENSIONS		
							A	B	C
05811	5KSM81HFL3004T16W	115	1550/1	CW OSE	1.1	0.50	3.50	1/4	-
3.5 inch diam., enclosed, 3 tapped holes or side pad mount, shaded pole, 1/4 inch threaded shaft									
Replaces: Prestcold No. 401-0032-01									

## Prestcold



MARS NO.	MFG. NO.	HP	VOLTS	RPM/SPD	ROT	AMPS	DIMENSIONS		
							A	B	C
05821	5KSM81HFL3006T16W	230	1550/1	CW OSE	0.55	0.50	3.50	-	-
3.5 inch diam., enclosed 3 tapped holes or side pad, shaded pole, 1/4 inch threaded shaft									
Replaces: Prestcold No. 401-0033-01									



## Reznor



MARS NO.	MFG. NO.	HP	VOLTS	RPM/SPD	ROT	AMPS	DIMENSIONS			
							A	B	C	
D461	-	1/8	480	3200/1	CCW	0.32	3.33	4.25	-	

3.3 inch, PSC, sleeve bearing, 5/16 inch dia. shaft

Replaces: 7162-0396



## Rheem/Ruud



MARS NO.	MFG. NO.	HP	VOLTS	RPM/SPD	ROT	AMPS	DIMENSIONS			
							A	B	C	
03149	5KCP39FGT318S	1/3	460	1075/1	REV	0.90	3.75	4.48	0.50	

5.5 inch diam., totally enclosed, sleeve bearing, 5 MFD @ 370V capacitor required (MARS No. 12005), thru bolt or shell mount

Replaces: Rheem 51-23063-11



## Rheem/Ruud



MARS NO.	MFG. NO.	HP	VOLTS	RPM/SPD	ROT	AMPS	DIMENSIONS			
							A	B	C	
03153	5KCP39CGN330T	1/5	208-230	1075/1	CCW OSE	1.7	3.75	3.73	0.50	

5.5 inch diam., totally enclosed thru bolts out lead end, 3 MFD @ 370V capacitor required (MARS No. 12003)

Replaces: Rheem 51-20672-01, 51-20673-01, 51-20674-01, 51-20675-01, 51-20679-01, 51-20679-11, 51-20680-01, 51-20681-01, 51-20682-01, Packard 82680; Universal 442; GE 5KCP39CGE175S, 5KCP39CGK787S; AO Smith ORM1016, F48SD6L12; Franklin 873-5660-271, 873-5660-301, 80672; Emerson K136



## Rheem/Ruud



MARS NO.	MFG. NO.	HP	VOLTS	RPM/SPD	ROT	AMPS	DIMENSIONS			
							A	B	C	
03154	5KCP39FNG329T	1/3	208-230	1075/1	CCW OSE	1.8	3.75	3.98	0.50	

5.5 inch diam., totally enclosed thru bolts out lead end, 5 MFD @ 370V capacitor required (MARS No. 12005)

Replaces: GE 5KCP39FGK786S, 5KCP39GGE879S Rheem 51-20687-01, 51-20688-01, 51-20689-01, 51-20690-01, 51-21185-01, 51-21185-01, 51-21185-11 Packard 82688 AO Smith ORM 1036, F48SJ6L11 Universal 444 Emerson K591



## Rheem/Ruud



MARS NO.	MFG. NO.	HP	VOLTS	RPM/SPD	ROT	AMPS	DIMENSIONS			
							A	B	C	
03155	5KCP39GNG333T	1/8	208-230	825/1	CCW OSE	1.2	3.75	4.23	0.50	

5.5 inch diam., totally enclosed, thru bolt out lead, 5 MFD @ 370V capacitor required (MARS No. 12005)

Replaces: Rheem 51-20760-01, 51-20160-02, 51-20160-11, 51-20163-01, 51-21276-01, 51-41404-01 GE 5KCP39GGD121S, 5KCP39GK789S Emerson K9735, K55MFG-6350 Packard 70525 AO Smith ORM1008, F48SG6LZ, Universal 542



## Rheem/Ruud



MARS NO.	MFG. NO.	HP	VOLTS	RPM/SPD	ROT	AMPS	DIMENSIONS			
							A	B	C	
03220	5KCP39CGP088S	1/5	208-230	1075/1	CCW OSE	1.0	4.00	4.10	0.50	

5 inch diam., totally enclosed, shell mounting screws, 3 MFD @ 370V capacitor required (MARS No. 12003) sleeve bearing

Replaces: 5KCP39CGN409S, 5KCP39CGK082S Rheem 51-21853-82



## Rheem/Ruud



MARS NO.	MFG. NO.	HP	VOLTS	RPM/SPD	ROT	AMPS	DIMENSIONS			
							A	B	C	
D459	-	1/15	230 / 460	3000/1	CW	1.2-0.60	3.00	7.00	0.25	

3.3 inch, Shaded pole, ball bearing, 1/4 inch dia. shaft

Replaces: HC24AU725A, JB1P044, AB1S078, JB1R039, AB1S029, S88-556



## Rheem/Ruud



MARS NO.	MFG. NO.	HP	VOLTS	RPM/SPD	ROT	AMPS	DIMENSIONS			
							A	B	C	
A142	-	1/20	115	3450/1	CW	0.70	-	-	-	

3.3 inch, PSC, sleeve bearing, 4@370V capacitor required (MARS # 12004)

Replaces: RHEEM, 7062-1881



## Rheem/Ruud



MARS NO.	MFG. NO.	HP	VOLTS	RPM/SPD	ROT	AMPS	DIMENSIONS			
							A	B	C	
A066	-	1/30	120	3000/1	CW	1.27	-	-	-	

Shaded pole, ball bearing

Replaces: 70-24157-03, 117847-00



## Rheem/Ruud



MARS NO.	MFG. NO.	HP	VOLTS	RPM/SPD	ROT	AMPS	DIMENSIONS			
							A	B	C	
A240	-	1/50	115	3000/1	CCW	1.1	-	-	-	

3.3 inch, Shaded pole, sleeve bearing

Replaces: 7021-8183, 70-21496-83



## Rheem/Ruud



MARS NO.	MFG. NO.	HP	VOLTS	RPM/SPD	ROT	AMPS	DIMENSIONS			
							A	B	C	
A241	-	1/25	208-230	3200/1	CW	0.62	-	-	-	

3.3 inch, Shaded pole, sleeve bearing

Replaces: 7021-9567, 70-23641-81



## Rheem/Ruud



MARS NO.	MFG. NO.	HP	VOLTS	RPM/SPD	ROT	AMPS	DIMENSIONS			
							A	B	C	
A242	-	1/50	115	3400/1	CW	1.36	-	-	-	

3.3 inch, Shaded pole, sleeve bearing

Replaces: 7021-7150, 70-22436-01



## Rheem/Ruud



MARS NO.	MFG. NO.	HP	VOLTS	RPM/SPD	ROT	AMPS	DIMENSIONS			
							A	B	C	
A243	-	1/50	115	3400/1	CW	1.36	-	-	-	

3.3 inch, Shaded pole, sleeve bearing

Replaces: 7021-7790, 70-22436-02



## Rheem/Ruud



MARS NO.	MFG. NO.	HP	VOLTS	RPM/SPD	ROT	AMPS	DIMENSIONS			
							A	B	C	
A244	-	1/20	208-230	3300/1	CCW	0.85	-	-	-	

3.3 inch, Shaded pole, ball bearing

Replaces: 7021-6967, 70-42241-01



# One-On-One™ Direct Replacement Motors

ONE-ON-ONE

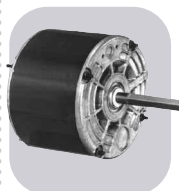


## Rheem/Ruud

MARS NO.	MFG. NO.	HP	VOLTS	RPM/SPD	ROT	AMPS	DIMENSIONS		
A	B	C							
A245	-	1/15	208-230	3000/1	CW	0.95/ 0.85	-	-	-

3.3 inch, Shaded pole, ball bearing

Replaces: 7021-7490, 70-42278-02



## Rheem/Ruud

MARS NO.	MFG. NO.	HP	VOLTS	RPM/SPD	ROT	AMPS	DIMENSIONS		
A	B	C							
D832	-	1/8	208-230	825/1	REV	1.1	4.75	4.00	0.50

3.3 inch, PSC, sleeve bearing, 4 drilled and tapped holes in shell

Replaces: 21276-02, 21276-01, 512076-01



## Rheem/Ruud

MARS NO.	MFG. NO.	HP	VOLTS	RPM/SPD	ROT	AMPS	DIMENSIONS		
A	B	C							
A246	-	1/20	115	3400/ 2400/2	CW	0.85	-	-	-

3.3 inch, PSC, ball bearing

Replaces: 7062-3925, 70-24206-01



## Rheem/Ruud

MARS NO.	MFG. NO.	HP	VOLTS	RPM/SPD	ROT	AMPS	DIMENSIONS		
A	B	C							
D459	-	1/15	230/ 460	3000/1	CW	1.2- 0.60	3.00	7.00	0.25

3.3 inch, Shaded pole, ball bearing, 1/4 inch dia. shaft

Replaces: HC24AU725A, JB1P044, AB1S078, JB1R039, AB1S029, S88-556

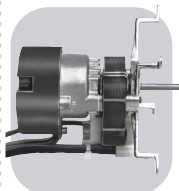


## Rheem/Ruud

MARS NO.	MFG. NO.	HP	VOLTS	RPM/SPD	ROT	AMPS	DIMENSIONS		
A	B	C							
A247	-	1/40	115	3250/ 2800/2	CW	0.95	-	-	-

3.3 inch, PSC, sleeve bearing

Replaces: 7062-5519



## Rheem/Ruud

MARS NO.	MFG. NO.	HP	VOLTS	RPM/SPD	ROT	AMPS	DIMENSIONS		
A	B	C							
K628	-	1/200	208-230	3000/1	CW	0.25	1.50	4.90	0.25

Shaded pole, sleeve bearing, 1/4 inch dia. shaft

Replaces: 51-21964-01, 7102-0628

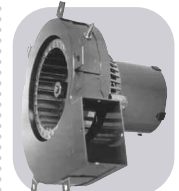


## Rheem/Ruud

MARS NO.	MFG. NO.	HP	VOLTS	RPM/SPD	ROT	AMPS	DIMENSIONS		
A	B	C							
D724	-	3/4 - 1/2 - 1/3 - 1/4	115	1075/4	REV	9.5 - 7.2 - 5.6 - 3.5	6.00	5.75	-

5.6 inch, PSC, sleeve bearing, 15@370V capacitor required (MARS # 12010), includes 8 drilled and tapped holes in shell

Replaces: VARIOUS



## Rheem/Ruud

MARS NO.	MFG. NO.	HP	VOLTS	RPM/SPD	ROT	AMPS	DIMENSIONS		
A	B	C							
A079	-	1/50	115	3000/1	CCW	1.1	-	-	-

3.3 inch, Shaded pole, sleeve bearing

Replaces: 74-70-21504-03-04, 74-70-21496-03-01, JAIM106, JAIM137, 7021-5615



## Rheem/Ruud

MARS NO.	MFG. NO.	HP	VOLTS	RPM/SPD	ROT	AMPS	DIMENSIONS		
A	B	C							
10463	-	1/2 - 1/3 - 1/4 - 1/6	115	1075/4	REV	6.2	5.50	4.73	0.50

5.5 inch dia., open endshields, sleeve bearing, capacitor required noted on motor label, direct drive blower motor

Replaces: 51-23012-41



## Rheem/Ruud

MARS NO.	MFG. NO.	HP	VOLTS	RPM/SPD	ROT	AMPS	DIMENSIONS		
A	B	C							
A086	-	1/25	115	3200/1	CW	1.3	-	-	-

3.3 inch, Shaded pole, sleeve bearing

Replaces: 7021-5853

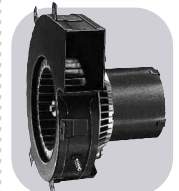


## Rheem/Ruud

MARS NO.	MFG. NO.	HP	VOLTS	RPM/SPD	ROT	AMPS	DIMENSIONS		
A	B	C							
D2840	-	1/5	208/230	1075/1	CW	1.3	4.13	3.75	0.50

5.6 inch, PSC, sleeve bearing, 4 drilled and tapped holes in shell

Replaces: 51-21853-82



## Rheem/Ruud

MARS NO.	MFG. NO.	HP	VOLTS	RPM/SPD	ROT	AMPS	DIMENSIONS		
A	B	C							
A090	-	1/50	115	3000/1	CW	1.1	-	-	-

3.3 inch, Shaded pole, sleeve bearing

Replaces: RHEEM 70-21496-01, 7021-5239 JAIM102



## Rheem/Ruud

MARS NO.	MFG. NO.	HP	VOLTS	RPM/SPD	ROT	AMPS	DIMENSIONS		
A	B	C							
D2842	-	1/6	208/230	825/1	CW	1.2	4.25	4.00	0.50

5.6 inch, PSC, sleeve bearing, 4 drilled and tapped holes in shell

Replaces: 51-20760-11



## Rheem/Ruud

MARS NO.	MFG. NO.	HP	VOLTS	RPM/SPD	ROT	AMPS	DIMENSIONS		
A	B	C							
A136	-	1/20	115	3450/1	CW	0.75	-	-	-

3.3 inch, PSC, sleeve bearing 4@370V capacitor required (MARS # 12004)

Replaces: RHEEM, 7062-3861



## Rheem/Ruud



MARS NO.	MFG. NO.	HP	VOLTS	RPM/SPD	ROT	AMPS	DIMENSIONS		
							A	B	C
A139	-	1/20	115	3000/1	CW	0.95	-	-	-

3.3 inch, Shaded pole, sleeve bearing

Replaces: RHEEM, 7021-7577

## Rheem/Ruud



MARS NO.	MFG. NO.	HP	VOLTS	RPM/SPD	ROT	AMPS	DIMENSIONS		
							A	B	C
A142	-	1/20	115	3450/1	CW	0.70	-	-	-

3.3 inch, PSC, sleeve bearing, 4@370V capacitor included

Replaces: RHEEM, 7062-1881

## Rheem/Ruud

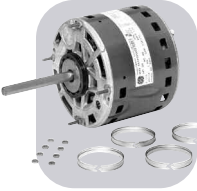


MARS NO.	MFG. NO.	HP	VOLTS	RPM/SPD	ROT	AMPS	DIMENSIONS		
							A	B	C
03463	5KCP39KG V804AS	1/2, 1/3, 1/4, 1/5, 1/6	115	1075/4	REV	6.2	5.00	4.73	0.50

5.5 inch dia., open endshields, sleeve bearing, capacitor required noted on motor label, direct drive blower motor

Replaces: Emerson 5460, Rheem 51-23012-41, Global E5460

## Rheem/Ruud



MARS NO.	MFG. NO.	HP	VOLTS	RPM/SPD	ROT	AMPS	DIMENSIONS		
							A	B	C
03464	5KCP39KG V805AS	1/2, 1/3, 1/4, 1/5, 1/6	208-230	1075/4	REV	2.7	5.00	4.73	0.50

5.5 inch dia., open endshields, sleeve bearing, capacitor required noted on motor label, direct drive blower motor

Replaces: Emerson 5461, Rheem 51-23022-41, Global E5461

## Rheem/Ruud



MARS NO.	MFG. NO.	HP	VOLTS	RPM/SPD	ROT	AMPS	DIMENSIONS		
							A	B	C
03465	5KCP39KG V805AS	1/3, 1/4, 1/5, 1/6	208-230	1075/2	REV	2.6	5.00	4.73	0.50

5.5 inch dia., totally enclosed, ball bearing, capacitor required noted on motor label, condenser fan motor

Replaces: Emerson 5462, Rheem 51-23053-21, Global E5462

## Rheem/Ruud



MARS NO.	MFG. NO.	HP	VOLTS	RPM/SPD	ROT	AMPS	DIMENSIONS		
							A	B	C
X216	048A1101097	1/5	208-230	1075/1	REV	1.6	6.00	3.75	-

48Y frame, open partial air over, 1 1/2" thru-bolts shaft end, 1" thru-bolts opposite shaft end, ball bearings, foot locating set screws on frame 90° apart, 5@370V capacitor required (MARS No. 12005)

Replaces: Emerson 5454, Magnetek 619

## Scherba Ind.



MARS NO.	MFG. NO.	HP	VOLTS	RPM/SPD	ROT	AMPS	DIMENSIONS		
							A	B	C
A087	-	1/6	115/230	2400/1	CCW	2.8/1.1	-	-	-

3.3 inch, PSC, sleeve bearing, 50/60Hz

Replaces: 7062-4687, 7062-3496

## Sears/Whirlpool

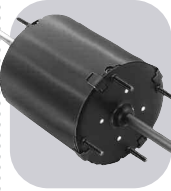


MARS NO.	MFG. NO.	HP	VOLTS	RPM/SPD	ROT	AMPS	DIMENSIONS			
							A	B	C	D
D137	-	1/30 - 1/65	115	1500/1	DS	1.0 - 0.70	3.00	2.88	0.31	-

3.3 inch, Shaded pole, sleeve bearing, 5/16 inch dia. shaft

Replaces: Rangehood

## Sears/Whirlpool



MARS NO.	MFG. NO.	HP	VOLTS	RPM/SPD	ROT	AMPS	DIMENSIONS			
							A	B	C	D
D323	-	1/15 - 1/20 - 1/35	115	1550/3	DS	1.0-0.80-0.60	2.75	3.75	0.31	-

3.3 inch, PSC, sleeve bearing, 5/16 inch dia. shaft, 3@370V capacitor required (MARS # 12003)

Replaces: Small Window A/C

## Sears/Whirlpool



MARS NO.	MFG. NO.	HP	VOLTS	RPM/SPD	ROT	AMPS	DIMENSIONS			
							A	B	C	D
D325	-	1/10 - 1/30	115	1550/2	CCW	2.5 - 2.3	1.75	3.50	0.31	-

3.3 inch, Shaded pole, sleeve bearing, 5/16 inch dia. shaft, rotation determined by viewing lug end

Replaces: Small Window A/C

## Singer



MARS NO.	MFG. NO.	HP	VOLTS	RPM/SPD	ROT	AMPS	DIMENSIONS			
							A	B	C	D
X218	056A1105313	3/4	208-230	1075/1	CCW	3.9-3.6	7.00	8.62	0.50	-

56Z frame, open air over, double shaft extension 1 1/2" long by 1/2" dia. with flat each end, 5/8" dia. shaft, 17.5@370V capacitor required (MARS NO. 12012)

Replaces: Steveco Package unit 3100

## Singer



MARS NO.	MFG. NO.	HP	VOLTS	RPM/SPD	ROT	AMPS	DIMENSIONS			
							A	B	C	D
D1169	-	1/10	208 - 230	3000/1	CCW	1.5	1.00	5.75	0.31	-

3.3 inch, Shaded pole, sleeve bearing, 5/16 inch dia. shaft

Replaces: FASCO 7121-4066 Comfor Maker 1708-507

## Singer



MARS NO.	MFG. NO.	HP	VOLTS	RPM/SPD	ROT	AMPS	DIMENSIONS			
							A	B	C	D
D1164	-	1/25	115 / 230	1550/1	CW	0.65	2.50	3.13	0.31	-

3.3 inch, Shaded pole, sleeve bearing, 5/16 inch dia. shaft

Replaces: JA2P091N, JA2P0901N

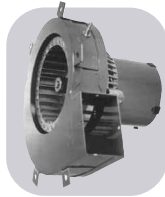
## Singer



MARS NO.	MFG. NO.	HP	VOLTS	RPM/SPD	ROT	AMPS	DIMENSIONS			
							A	B	C	D
D1167	-	1/40	208 - 230	3000/1	CCW	0.55	1.00	4.88	0.31	-

3.3 inch, Shaded pole, sleeve bearing, 5/16 inch dia. shaft

Replaces: 1708-518, 7121-5854



### Skymark

MARS NO.	MFG. NO.	HP	VOLTS	RPM/SPD	ROT AMPS	DIMENSIONS		
						A	B	C
A251	-	1/35	208-230	3000/1	CCW 1.1	-	-	-

3.3 inch, Shaded pole, sleeve bearing, 50/60Hz

Replaces: 7021-9136, MTR-136PK

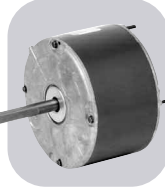


### Tecumseh

MARS NO.	MFG. NO.	HP	VOLTS	RPM/SPD	ROT AMPS	DIMENSIONS			
						A	B	C	
D475	-	1/12	460	1550/1	CCW 0.50	2.50	4.50	5/16	

3.3 inch, Shaded pole, sleeve bearing, 5/16 inch dia. shaft

Replaces: Tecumseh 810G037A47, 5KCP11FG1197CS



### Snyder/Arco

MARS NO.	MFG. NO.	HP	VOLTS	RPM/SPD	ROT AMPS	DIMENSIONS		
						A	B	C
03219	5KCP39D GP089S	1/10	208-230	825/1	CCW OSE 0.70	3.00	3.70	-

5.5 inch diam., totally enclosed, extended clamp screws, 5 @ 370V cap required (MARS No. 12005)

Replaces: 5KCP39DGGK093S



### Tecumseh

MARS NO.	MFG. NO.	HP	VOLTS	RPM/SPD	ROT AMPS	DIMENSIONS			
						A	B	C	
00353	ESP-L35EM2	35W	230	1500/1	CCW OSE 0.70	0.50	3.50	1/4	

3.875 inch diam., cast iron unit bearing motor, end or side pad mounting, horizontal operation, 1/4" threaded shaft

Replaces: Tecumseh TFM352, 810A10-B, 810M035A21, 810M035A28, 81091-R

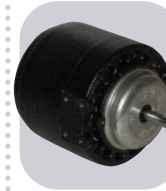


### State Ind.

MARS NO.	MFG. NO.	HP	VOLTS	RPM/SPD	ROT AMPS	DIMENSIONS		
						A	B	C
W9	-	1/60	115	3000/1	CW 0.95	-	-	-

3.3 inch, Shaded pole, sleeve bearing, water heater draft inducer

Replaces: 7021-10548, 0012400500



### Tecumseh

MARS NO.	MFG. NO.	HP	VOLTS	RPM/SPD	ROT AMPS	DIMENSIONS			
						A	B	C	
00507	ESP- OL50EMJR21	50W	230	1500/1	CCW OSE 0.85	-	4.30	5/16	

3.875 inch diam., open 3 tapped holes shaft end or side pad mount, shaded pole, 5/16 inch shaft dia. 2" shaft length

Replaces: Tecumseh No. 810M050A62, 810E02674



### State Ind.

MARS NO.	MFG. NO.	HP	VOLTS	RPM/SPD	ROT AMPS	DIMENSIONS		
						A	B	C
W10	-	1/20	115	3400/1	CCW 1.80	-	-	-

3.3 inch, Shaded pole, sleeve bearing, water heater draft inducer

Replaces: 7021-11086, 0012400540



### Tecumseh

MARS NO.	MFG. NO.	HP	VOLTS	RPM/SPD	ROT AMPS	DIMENSIONS			
						A	B	C	
01336	5KSM92K FL2008S	1/20	230	1550	CW OSE 1.1	2.00	4.20	-	

4 inch diam., open, end mounting, shaded pole, 5/16 inch shaft

Replaces: 5KSP11FG1377, 5KSP11FG1541SEmerson F33HXFRH-2649 Tecumseh 810G037A48 and 810E026A74

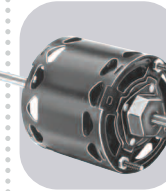


### Taco

MARS NO.	MFG. NO.	HP	VOLTS	RPM/SPD	ROT AMPS	DIMENSIONS		
						A	B	C
4722	5KH39QN5 558T	1/12	115	1800/1	CCW OSE 2.1	1.00	7.29	-

48Y frame, open air over, single split phase, resilient ring mount, sleeve bearing, former MARS # X700

Replaces: Taco 110-388, Marathon 48S17D1027, 48S17D2102



### Thermador (Tradewinds)

MARS NO.	MFG. NO.	HP	VOLTS	RPM/SPD	ROT AMPS	DIMENSIONS			
						A	B	C	
D1165	-	1/20	115	1550/1	DS 2.0	3.50	-	5/16	

3.3 inch, Shaded pole, sleeve bearing, 5/16 inch dia. shaft

Replaces: Tradewinds/Blower Motors

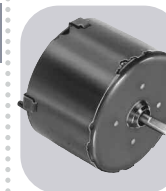


### Taco

MARS NO.	MFG. NO.	HP	VOLTS	RPM/SPD	ROT AMPS	DIMENSIONS		
						A	B	C
4404	5KH39QN5 550X	1/8	115	1800/1	CCW OSE 2.6	1.50	8.93	-

48Y frame, open air over, single split phase, resilient ring mount, sleeve bearing, former MARS No. X701

Replaces: GE 5KH32EG129GA, Marathon 48S17D1084



### Thermador (Tradewinds)

MARS NO.	MFG. NO.	HP	VOLTS	RPM/SPD	ROT AMPS	DIMENSIONS			
						A	B	C	
D1155	-	1/100	115	1085/1	CCW 0.50	1.00	-	1/4	

3.3 inch, Shaded pole, sleeve bearing, 1/4 inch dia. shaft

Replaces: 17-09-679, VQT-90, JA2M087R



### Tappan

MARS NO.	MFG. NO.	HP	VOLTS	RPM/SPD	ROT AMPS	DIMENSIONS		
						A	B	C
A073	-	73CF M	115- 230	3000/1	CCW 0.70/0. 35	-	-	-

3.3 inch, Shaded pole, ball bearing

Replaces: 82932, 8251560133



### Thermal Transfer

MARS NO.	MFG. NO.	HP	VOLTS	RPM/SPD	ROT AMPS	DIMENSIONS			
						A	B	C	
D1006	-	1/4	115	1600/1	CW 7.2	2.75	-	1/2	

3.3 inch, Shaded pole, sleeve bearing

Replaces: 7108-6544, 66098



## Tjernlund



MARS NO.	MFG. NO.	HP	VOLTS	RPM/SPD	ROT	AMPS	DIMENSIONS		
							A	B	C
D130	-	1/40	115	1500/1	CW	1.0	4.13	-	0.31

3.3 inch, Shaded pole, sleeve bearing, 5/16 inch dia. shaft

Replaces: 7163-6058



## Trane



MARS NO.	MFG. NO.	HP	VOLTS	RPM/SPD	ROT	AMPS	DIMENSIONS		
							A	B	C
A069	-	1/70	208-240	3000	CCW	0.50	-	-	-

3.3 inch, Shaded pole, sleeve bearing

Replaces: 38040252, 82252



## Trane



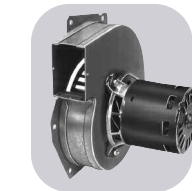
MARS NO.	MFG. NO.	HP	VOLTS	RPM/SPD	ROT	AMPS	DIMENSIONS		
							A	B	C
A075	-	1/40	230	3000/1	CCW	0.40	-	-	-

3.3 inch, Shaded pole, ball bearing

Replaces: 38050005



## Trane



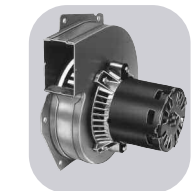
MARS NO.	MFG. NO.	HP	VOLTS	RPM/SPD	ROT	AMPS	DIMENSIONS		
							A	B	C
A143	-	1/50	115	3000/1	CW	0.95	-	-	-

3.3 inch, Shaded pole sleeve bearing

Replaces: TRANE, 7021-8428, 7021-8013, 7021-8924



## Trane



MARS NO.	MFG. NO.	HP	VOLTS	RPM/SPD	ROT	AMPS	DIMENSIONS		
							A	B	C
A146	-	1/100	115	3000/2	CW	1.0-0.35	-	-	-

3.3 inch, Shaded pole sleeve bearing

Replaces: TRANE, 7021-7986, 7021-8925, 7002-2531



## Trane



MARS NO.	MFG. NO.	HP	VOLTS	RPM/SPD	ROT	AMPS	DIMENSIONS		
							A	B	C
A130	-	1/20	115	3450/1	CW	0.70	-	-	-

3.3 inch, PSC sleeve bearing

Replaces: TRANE, 7062-3956, 7062-3616



## Trane



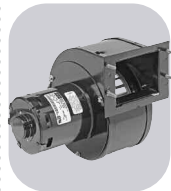
MARS NO.	MFG. NO.	HP	VOLTS	RPM/SPD	ROT	AMPS	DIMENSIONS		
							A	B	C
A150	-	1/35	208-230	3000/1	CCW	0.50	-	-	-

3.3 inch, Shaded pole sleeve bearing

Replaces: TRANE, 7021-7833, 7021-8928



## Trane



MARS NO.	MFG. NO.	HP	VOLTS	RPM/SPD	ROT	AMPS	DIMENSIONS		
							A	B	C
A191	-	1/15	208-230	3000/1	CCW	0.80	-	-	-

3.3 inch, Shaded pole, sleeve bearing

Replaces: 7021-6683, X380-40251-01-7



## Trane



MARS NO.	MFG. NO.	HP	VOLTS	RPM/SPD	ROT	AMPS	DIMENSIONS		
							A	B	C
A192	-	1/40	115	3000/1	CCW	1.0	-	-	-

3.3 inch, Shaded pole, ball bearing

Replaces: 7021-8569, X38040253057



## Trane



MARS NO.	MFG. NO.	HP	VOLTS	RPM/SPD	ROT	AMPS	DIMENSIONS		
							A	B	C
A193	-	1/35	208-240	3480/1	CCW	0.59-0.50	-	-	-

3.3 inch, Shaded pole, ball bearing

Replaces: 7021-8591, X38040050-01-0



## Trane



MARS NO.	MFG. NO.	HP	VOLTS	RPM/SPD	ROT	AMPS	DIMENSIONS		
							A	B	C
A194	-	1/80	115	3000/1950/2	CW	1.0/0.50	-	-	-

3.3 inch, Shaded pole, sleeve bearing

Replaces: 7021-9561, X38020420017



## Trane



MARS NO.	MFG. NO.	HP	VOLTS	RPM/SPD	ROT	AMPS	DIMENSIONS		
							A	B	C
A195	-	1/16	115	3400/1	CW	1.75	-	-	-

3.3 inch, Shaded pole, ball bearing

Replaces: 7021-11543, X38040313070



## Trane



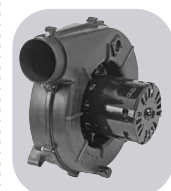
MARS NO.	MFG. NO.	HP	VOLTS	RPM/SPD	ROT	AMPS	DIMENSIONS		
							A	B	C
A196	-	1/25	115	3200/1	CW	1.35	-	-	-

3.3 inch, Shaded pole, sleeve bearing

Replaces: 7021-11544, D342094P02 7021-9010, D330757P02



## Trane



MARS NO.	MFG. NO.	HP	VOLTS	RPM/SPD	ROT	AMPS	DIMENSIONS		
							A	B	C
A197	-	1/70	33-110	1500-4700/VAR.	CW	1.0	-	-	-

3 phase, ball bearing

Replaces: 7092-0238, D342097P01



# One-On-One™ Direct Replacement Motors

ONE-ON-ONE



## Trane

MARS NO.	MFG. NO.	HP	VOLTS	RPM/SPD	ROT	AMPS	DIMENSIONS		
A	B	C							
A198	-	1/45	115	3000/1	CW	1.75	-	-	-

Shaded pole, ball bearing

Replaces: 7058-0259, D342077P01



## Trane

MARS NO.	MFG. NO.	HP	VOLTS	RPM/SPD	ROT	AMPS	DIMENSIONS		
A	B	C							
A270	-	1/15	208-230	3350/2800/2	CCW	.42/50	-	-	-

3.3 inch, PSC, ball bearing, 50/60Hz

Replaces: 7062-5033, X38040369010



## Trane

MARS NO.	MFG. NO.	HP	VOLTS	RPM/SPD	ROT	AMPS	DIMENSIONS		
A	B	C							
A260	-	1/45	115	3250/1	CW	1.0	-	-	-

Shaded pole, ball bearing

Replaces: 7058-0261, D342077P03



## Trane

MARS NO.	MFG. NO.	HP	VOLTS	RPM/SPD	ROT	AMPS	DIMENSIONS		
A	B	C							
A271	-	1/18	208-230	3500/2	CW	0.62	-	-	-

3.3 inch, PSC, ball bearing, 50/60Hz

Replaces: 7062-3969, X38040308-01

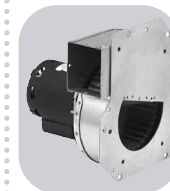


## Trane

MARS NO.	MFG. NO.	HP	VOLTS	RPM/SPD	ROT	AMPS	DIMENSIONS		
A	B	C							
A261	-	1/45	115	3250/1	CW	1.0	-	-	-

Shaded pole, ball bearing

Replaces: 7058-0262, D342077P04



## Trane

MARS NO.	MFG. NO.	HP	VOLTS	RPM/SPD	ROT	AMPS	DIMENSIONS		
A	B	C							
A272	-	1/12	208-230	3500/2	CW	0.65	-	-	-

3.3 inch, PSC, ball bearing, 50/60Hz

Replaces: 7062-3971, X38040309-01

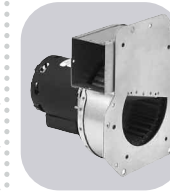


## Trane

MARS NO.	MFG. NO.	HP	VOLTS	RPM/SPD	ROT	AMPS	DIMENSIONS		
A	B	C							
A262	-	1/45	115	3250/1	CW	1.0	-	-	-

Shaded pole, ball bearing

Replaces: 7058-0263, D34077P05



## Trane

MARS NO.	MFG. NO.	HP	VOLTS	RPM/SPD	ROT	AMPS	DIMENSIONS		
A	B	C							
A273	-	1/8	208-230	3500/2	CW	0.62	-	-	-

3.3 inch, PSC, ball bearing, 50/60Hz

Replaces: 7062-3972, X38040310-01

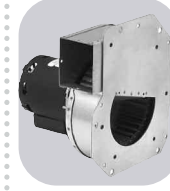


## Trane

MARS NO.	MFG. NO.	HP	VOLTS	RPM/SPD	ROT	AMPS	DIMENSIONS		
A	B	C							
A263	-	1/45	115	3250/1	CW	1.0	-	-	-

Shaded pole, ball bearing

Replaces: 7058-0264, D34077P06



## Trane

MARS NO.	MFG. NO.	HP	VOLTS	RPM/SPD	ROT	AMPS	DIMENSIONS		
A	B	C							
A274	-	1/24	208-230	3500/1	CW	0.28	-	-	-

3.3 inch, PSC, ball bearing, 50/60Hz

Replaces: 7062-3973, X38040311-01



## Trane

MARS NO.	MFG. NO.	HP	VOLTS	RPM/SPD	ROT	AMPS	DIMENSIONS		
A	B	C							
A266	-	1/125	115	3000/2	CW	1.0	-	-	-

Shaded pole, ball bearing

Replaces: 7002-3445, D342078P04



## Trane

MARS NO.	MFG. NO.	HP	VOLTS	RPM/SPD	ROT	AMPS	DIMENSIONS		
A	B	C							
A276	-	1/55	115	3000/1	CW	1.0	-	-	-

3.3 inch, Shaded pole, sleeve bearing

Replaces: 7021-9011, D330757P01

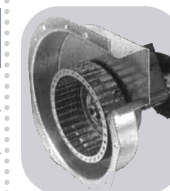


## Trane

MARS NO.	MFG. NO.	HP	VOLTS	RPM/SPD	ROT	AMPS	DIMENSIONS		
A	B	C							
A268	-	1/45	115	3000/2	CW	1.4	-	-	-

Shaded pole, ball bearing

Replaces: 7002-3447, D342078P06



## Trane

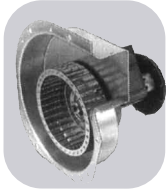
MARS NO.	MFG. NO.	HP	VOLTS	RPM/SPD	ROT	AMPS	DIMENSIONS		
A	B	C							
A278	-	1/50	115	3000/2	CW	1.4	-	-	-

3.3 inch, Shaded pole, ball bearing

Replaces: 7002-2530, D341095P02



## Trane



MARS NO.	MFG. NO.	HP	VOLTS	RPM/SPD	ROT AMPS	DIMENSIONS			
A	B	C							
A279	-	1/125	115	3000/2	CW	0.75	-	-	-

Shaded pole, ball bearing

Replaces: 7002-2531, D341095P04, 7002-3275, D341663P04 **FASCO**

## Trane

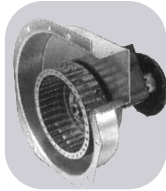


MARS NO.	MFG. NO.	HP	VOLTS	RPM/SPD	ROT AMPS	DIMENSIONS			
A	B	C							
A361	-	1/42	115	3000/1	CW	1.6	-	-	-

Shaded pole, ball bearing

Replaces: 7002-2558, D330787P01 **FASCO**

## Trane



MARS NO.	MFG. NO.	HP	VOLTS	RPM/SPD	ROT AMPS	DIMENSIONS			
A	B	C							
A362	-	1/42	115	3000/1	CW	1.6	-	-	-

Shaded pole, ball bearing

Replaces: 7002-3273, D341663P05 **FASCO**

## Trane



MARS NO.	MFG. NO.	HP	VOLTS	RPM/SPD	ROT AMPS	DIMENSIONS			
A	B	C							
A368	-	1/20	115	3200/2	CW	0.80	-	-	-

3.3 inch, PSC, sleeve bearing

Replaces: 7062-3782, D340623P01 **FASCO**

## Trane



MARS NO.	MFG. NO.	HP	VOLTS	RPM/SPD	ROT AMPS	DIMENSIONS			
A	B	C							
A369	-	1/45	208-230	2800/2	CCW	0.34	-	-	-

3.3 inch, PSC, ball bearing

Replaces: 7062-3915, C663946P01 **FASCO**

## Trane



MARS NO.	MFG. NO.	HP	VOLTS	RPM/SPD	ROT AMPS	DIMENSIONS			
A	B	C							
A370	-	1/100	208-230	2920/2	CCW	0.18	-	-	-

3.3 inch, PSC, ball bearing

Replaces: 7062-3918, C664099P01 **FASCO**

## Trane



MARS NO.	MFG. NO.	HP	VOLTS	RPM/SPD	ROT AMPS	DIMENSIONS			
A	B	C							
D1050	-	1/8	230	1550/1	CW	1.1	3.00	3.25	0.50

PSC, sleeve bearing, original motor is SP, D1050 is PSC to provide greater motor efficiency and permit closing of shaft end to prevent moisture from entering motor

Replaces: WW94X236SP, WW94X936PSC **FASCO**

## Trane



MARS NO.	MFG. NO.	HP	VOLTS	RPM/SPD	ROT AMPS	DIMENSIONS			
A	B	C							
D895	-	1/8	208-230	1650/1	CW	0.80	1.50	-	0.50

5 inch, PSC, sleeve bearing, 4@370V capacitor required (MARS # 12004)

Replaces: 5KCP39BGR426S, MOT 6363 **FASCO**

## Trane

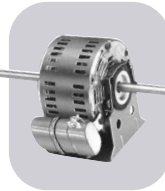


MARS NO.	MFG. NO.	HP	VOLTS	RPM/SPD	ROT AMPS	DIMENSIONS			
A	B	C							
D1089	-	1/15	115	850/3	REV	1.3	3.00	-	0.50

5 inch, PSC, sleeve bearing, 4@370V capacitor required (MARS # 12004)

Replaces: 5KCP39DGM458AS, K48HXCFE-1327, MOT3589, MOT 3591, FASCO 7176-3020 **FASCO**

## Trane



MARS NO.	MFG. NO.	HP	VOLTS	RPM/SPD	ROT AMPS	DIMENSIONS			
A	B	C							
D1090	-	1/15	115	1100/3	CW	0.80	10.50	-	0.50

5 inch, PSC, sleeve bearing

Replaces: MOT1877, K48HXBLA-956 **FASCO**

## Trane

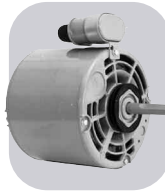


MARS NO.	MFG. NO.	HP	VOLTS	RPM/SPD	ROT AMPS	DIMENSIONS			
A	B	C							
02743	5KCP29BK8219S	1/8	208-230	1650/1	CCW OSE	0.83	3.00	3.75	-

5 inch diam., totally enclosed, 4 MFD @ 370V capacitor required (MARS No. 12004)

Replaces: GE 5KCP29BK6319S Trane X70670847-01-0, MOT 3438, FASCO D1050 MARS 10668 AO SMITH OTR4513 **genteq**

## Tyler



MARS NO.	MFG. NO.	HP	VOLTS	RPM/SPD	ROT AMPS	DIMENSIONS			
A	B	C							
D870	-	1/4	230	1625/1	CW	1.9	3.00	4.75	-

PSC, ball bearing, 4@370V capacitor included (MARS # 12004)

Replaces: 5KCP39EGC053T, UNIT NO. 760 **FASCO**

## Tyler



MARS NO.	MFG. NO.	HP	VOLTS	RPM/SPD	ROT AMPS	DIMENSIONS			
A	B	C							
00091	RS4BEB9E13	9W	115	1660/1	CW OSE	0.26	0.39	2.56	-

3.43 inch diam., enclosed, end or side pad mounting, capacitor mounted inside shell, water resistant

Replaces: RS4BEB9E16, RS4BEB9E12 **FMS**

## Tyler



MARS NO.	MFG. NO.	HP	VOLTS	RPM/SPD	ROT AMPS	DIMENSIONS			
A	B	C							
03042	5KCP39EGC053T	1/4	230	1625/1	CCW OSE	1.7	1.40	5.40	1/2

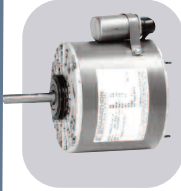
5.5 inch diam., shell only enclosed, resilient base and capacitor included, ball bearing

Replaces: 5KCP39EG755S & 5KCP39EN81S **genteq**

# One-On-One™ Direct Replacement Motors

ONE-ON-ONE

## Tyler



MARS NO.	MFG. NO.	HP	VOLTS	RPM/SPD	ROT	AMPS	DIMENSIONS		
							A	B	C
X270	048A1 70149	1/4	208-230	1625/1	CCW OSE	1.9	2.50	4.75	-

48Y frame, open air over, resilient ring thru-bolt mount, ball bearings, capacitor included

Replaces: Tyler 760, FASCO D870, AOS OTY1024

## Various OEM's



MARS NO.	MFG. NO.	HP	VOLTS	RPM/SPD	ROT	AMPS	DIMENSIONS		
							A	B	C
02362	5KCP29CK 4534AS	1/10	115	1075/4	CW OSE	1.7	10.50	14.50	0.50

5 inch diam., open, resilient base, sleeve bearing, 4 MFD @ 370V capacitor required

Replaces: 5KCP29CK4534T

## Warren

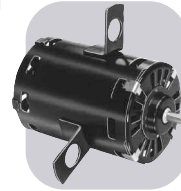


MARS NO.	MFG. NO.	HP	VOLTS	RPM/SPD	ROT	AMPS	DIMENSIONS		
							A	B	C
03007	5KCP39KGC056T	1/3	208-230	1075/1	CW OSE	3.1	3.00	5.50	0.50

5.5 inch diam., open resilient base and capacitor included, ball bearing

Replaces: 5KCP39KGC884S

## Weil McLain



MARS NO.	MFG. NO.	HP	VOLTS	RPM/SPD	ROT	AMPS	DIMENSIONS		
							A	B	C
D1190	-	1/30	115	3000/1	CW	1.6	1.75	4.88	0.31

3.3 inch, Shaded pole, sleeve bearing, 5/16 inch dia. shaft

Replaces: 7121-5750, JA1N074

## West Bend/McGraw Edison



MARS NO.	MFG. NO.	HP	VOLTS	RPM/SPD	ROT	AMPS	DIMENSIONS		
							A	B	C
D1134	-	1/50 - 1/65 - 1/80	115	1500/3	CW	1.1-0.80-0.60	1.75	2.25	-

3.3 inch, Shaded pole, sleeve bearing, 1/4 inch dia. shaft

Replaces: Portable Humidifier Motors

## Westinghouse

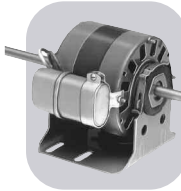


MARS NO.	MFG. NO.	HP	VOLTS	RPM/SPD	ROT	AMPS	DIMENSIONS		
							A	B	C
D262	-	1/5	230	925/1	REV	2.3	4.00	3.88	0.50

5 inch, PSC, sleeve bearing

Replaces: Whisperaire 319P300A

## Westinghouse

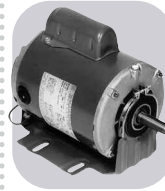


MARS NO.	MFG. NO.	HP	VOLTS	RPM/SPD	ROT	AMPS	DIMENSIONS		
							A	B	C
D1032	-	1/5	208-230	1550/1	DS	1.6	6.25	3.88	0.50

5 inch, PSC, sleeve bearing, 4@370V capacitor included

Replaces: Model No. 319P367A

## Westinghouse

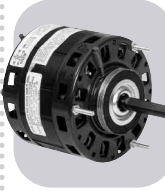


MARS NO.	MFG. NO.	HP	VOLTS	RPM/SPD	ROT	AMPS	DIMENSIONS		
							A	B	C
C138	-	3/4	115/208-230	1550/3	DBL SHFT	11.4/5.6 -5.7	-	-	0.625

56 Frame, Shaded pole, open, sleeve bearing, 5/16 inch dia. shaft

Replaces: 8264H2290 6000 BTU Window Units

## Westinghouse/Small Motor Division

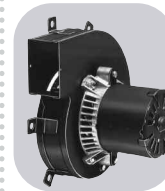


MARS NO.	MFG. NO.	HP	VOLTS	RPM/SPD	ROT	AMPS	DIMENSIONS		
							A	B	C
10810	-	1/5	115	1050/3	CCW OSE	6.5	4.75	5.17	0.50

5 inch, Shaded pole direct drive sleeve bearing motor

Replaces: Westinghouse 319P852, 322P115 Packard 70852, AO Smith BL6414

## Williamson

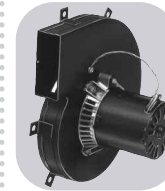


MARS NO.	MFG. NO.	HP	VOLTS	RPM/SPD	ROT	AMPS	DIMENSIONS		
							A	B	C
A080	-	1/45	115	3000/1	CW	1.1	-	-	-

3.3 inch, Shaded pole, sleeve bearing

Replaces: 7021-5510, 02-568

## Williamson



MARS NO.	MFG. NO.	HP	VOLTS	RPM/SPD	ROT	AMPS	DIMENSIONS		
							A	B	C
A118	-	1/15	115	3000/1	CW	1.8	-	-	-

3.3 inch, Shaded pole, sleeve bearing

Replaces: 100,000 BTU Furnace 7021-6999, 7021-7042 Leads must be modified

## Witt



MARS NO.	MFG. NO.	HP	VOLTS	RPM/SPD	ROT	AMPS	DIMENSIONS		
							A	B	C
D1102	-	1/20	115/230	1550/1	CW	0.75-0.40	2.63	3.50	0.31

3.3 inch, PSC, sleeve bearing, 5/16 inch dia. shaft

Replaces: 7190-2158, 8216073, 7190-2159, 8216074

## York



MARS NO.	MFG. NO.	HP	VOLTS	RPM/SPD	ROT	AMPS	DIMENSIONS		
							A	B	C
D1191	-	1/40	460	3200/1	CCW	0.37	2.50	5.75	0.25

3.3 inch, Shaded Pole, Ball Bearing, Includes shaft bushing, 1/4" diam. Stainless Steel Shaft, Includes Centrifugal Switch,

Replaces: 7121-7255

## York



MARS NO.	MFG. NO.	HP	VOLTS	RPM/SPD	ROT	AMPS	DIMENSIONS		
							A	B	C
D1171	-	1/15	460	3000/1	CCW	0.60	2.50	6.75	0.25

3.3 inch, Shaded Pole, Ball Bearing

Replaces: 024-24115-004, F33HXJBB3621



## York



MARS NO.	MFG. NO.	HP	VOLTS	RPM/SPD	ROT AMPS	DIMENSIONS		
						A	B	C
D1042	-	1/5	208-230	1075/1	DS 1.2	6.50	4.13	0.50

5 inch, PSC Condenser Fan Motor, Sleeve Bearing

Replaces: Cond. Fan, D1041, F47HXBGM-927



## York



MARS NO.	MFG. NO.	HP	VOLTS	RPM/SPD	ROT AMPS	DIMENSIONS		
						A	B	C
D873	-	1/2	230	1050/1	DS 3.2	9.75	4.50	0.50

5.6 inch, PSC, Sleeve Bearing

Replaces: K44HXJAF-4955



## York



MARS NO.	MFG. NO.	HP	VOLTS	RPM/SPD	ROT AMPS	DIMENSIONS		
						A	B	C
D2871	-	1 - 3/4 - 1/2	460	1100/3	REV 3.3-2.3 -1.9	3.50	6.00	0.50

5.6 inch, PSC, Sleeve Bearing

Replaces: 024-21673, K55HXJFJ-2832, 5KCP39SGH913BS



## York



MARS NO.	MFG. NO.	HP	VOLTS	RPM/SPD	ROT AMPS	DIMENSIONS		
						A	B	C
A063	-	1/56	230	3000/1	CCW 0.60	-	-	-

3.3 inch, Shaded Pole, ball bearing

Replaces: 26-22239



## York



MARS NO.	MFG. NO.	HP	VOLTS	RPM/SPD	ROT AMPS	DIMENSIONS		
						A	B	C
A083	-	1/60	230	3000/1	CCW 0.80	-	-	-

3.3 inch, Shaded Pole, Ball Bearing

Replaces: 026-16323-0000, 026-20224-000, 7021-1373



## York



MARS NO.	MFG. NO.	HP	VOLTS	RPM/SPD	ROT AMPS	DIMENSIONS		
						A	B	C
A144	-	1/40	208-230	3000/1	CW 0.50	-	-	-

3.3 inch, Shaded Pole, sleeve bearing

Replaces: 7021-6770



## York



MARS NO.	MFG. NO.	HP	VOLTS	RPM/SPD	ROT AMPS	DIMENSIONS		
						A	B	C
A137	-	-	115	3450/1	CW 0.70	-	-	-

3.3 inch, PSC, sleeve bearing

Replaces: 7062-2442, 7062-3342, 7062-3484, 7062-3342, 024-25007-700



## York



MARS NO.	MFG. NO.	HP	VOLTS	RPM/SPD	ROT AMPS	DIMENSIONS		
						A	B	C
A154	-	1/30	115	3000/1	CW 1.2	-	-	-

3.3 inch, Shaded Pole, sleeve bearing

Replaces: 7021-9428



## York



MARS NO.	MFG. NO.	HP	VOLTS	RPM/SPD	ROT AMPS	DIMENSIONS		
						A	B	C
A165	-	1/25	115	3450/1	CW 0.70	-	-	-

3.3 inch, PSC, ball bearing

Replaces: 7062-3958



## York



MARS NO.	MFG. NO.	HP	VOLTS	RPM/SPD	ROT AMPS	DIMENSIONS		
						A	B	C
A168	-	1/20	115	3450/1	CW 0.70	-	-	-

3.3 inch, PSC, ball bearing

Replaces: 7062-5019



## York



MARS NO.	MFG. NO.	HP	VOLTS	RPM/SPD	ROT AMPS	DIMENSIONS		
						A	B	C
A221	-	1/40	208-230	3000/1	CCW 0.55	-	-	-

3.3 inch, Shaded Pole, Sleeve Bearing

Replaces: 7021-8318, 026-30614-700, 7021-6991



## York



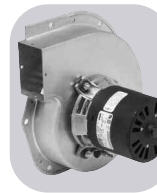
MARS NO.	MFG. NO.	HP	VOLTS	RPM/SPD	ROT AMPS	DIMENSIONS		
						A	B	C
A222	-	1/35	115	3000/1	CCW 1.05	-	-	-

3.3 inch, Shaded Pole, Ball Bearing

Replaces: 7021-8317, 026-32067-700, 7021-7481



## York



MARS NO.	MFG. NO.	HP	VOLTS	RPM/SPD	ROT AMPS	DIMENSIONS		
						A	B	C
A223	-	1/30	208-230	3200/1	CW 0.64	-	-	-

3.3 inch, Shaded Pole, Sleeve Bearing

Replaces: 7021-10096, 026-33999-001, 7021-9656



## York



MARS NO.	MFG. NO.	HP	VOLTS	RPM/SPD	ROT AMPS	DIMENSIONS		
						A	B	C
A224	-	1/18	115	3450/2	CW 0.80	-	-	-

3.3 inch, Shaded Pole, Sleeve Bearing

Replaces: 7062-5048, 024-27654-000, 7062-4743



# One-On-One™ Direct Replacement Motors

ONE-ON-ONE

## York

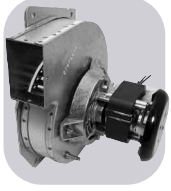


MARS NO.	MFG. NO.	HP	VOLTS	RPM/SPD	ROT	AMPS	DIMENSIONS		
							A	B	C
A225	-	1/15	115	3200/1	CW	2.25	-	-	-

3.3 inch, Shaded Pole, Sleeve Bearing

Replaces: 7021-11577, 17503, 7021-11830, 024-34558-000

## York



MARS NO.	MFG. NO.	HP	VOLTS	RPM/SPD	ROT	AMPS	DIMENSIONS		
							A	B	C
A226	-	1/35	115	3000/1	CW	1.7	-	-	-

Shaded Pole, Ball Bearing

Replaces: 7058-0266, 7058-0266S

## York

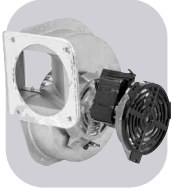


MARS NO.	MFG. NO.	HP	VOLTS	RPM/SPD	ROT	AMPS	DIMENSIONS		
							A	B	C
A227	-	1/25	115	3450/1	CW	0.70	-	-	-

3.3 inch, PSC, Sleeve Bearing

Replaces: 7062-4708S, 024-27641-000, 17450, 7062-4708

## York



MARS NO.	MFG. NO.	HP	VOLTS	RPM/SPD	ROT	AMPS	DIMENSIONS		
							A	B	C
A228	-	1/25	115	3000/1	CW	2.0	-	-	-

Shaded Pole, Ball Bearing

Replaces: 7002-3285, 024-31957-000, 7002-2941

## York



MARS NO.	MFG. NO.	HP	VOLTS	RPM/SPD	ROT	AMPS	DIMENSIONS		
							A	B	C
A229	-	1/25	115	3000/1	CW	1.75	-	-	-

Shaded Pole, Ball Bearing

Replaces: 7058-0267S, 17499, 7058-0267

## York



MARS NO.	MFG. NO.	HP	VOLTS	RPM/SPD	ROT	AMPS	DIMENSIONS		
							A	B	C
A230	-	1/20	115	3450/2	CW	0.80	-	-	-

3.3 inch, PSC, Sleeve Bearing

Replaces: 7062-5094S, 17476, 7062-5094

## York



MARS NO.	MFG. NO.	HP	VOLTS	RPM/SPD	ROT	AMPS	DIMENSIONS		
							A	B	C
A231	-	1/75	115	3000/2	CW	1.3	-	-	-

3.3 inch, Shaded Pole, Sleeve Bearing

Replaces: 7021-10213, 17452