

# Morris Leslie

## PLANT SALES

### Morris Leslie Telehandler Inspection Form

Year:	2019	Serial Number:	1017221	Machine Code:	na
Make:		Manitou	Model:	MLT630-105 V Elite	
Fleet Number:		FARM	Registration Number:	HG19 ZXZ	
Comments					
Hour Clock Working:	Y		Machine Hours:	268	
*TYRES MUST BE MINIMUM 30% REMAINING*					
Tyre Size:	460/70R24	N/S/F%:	95	O/S/F%:	95
Gross Weight(kg):	7000	Lift Capacity (kg):	3000	Lift Height (m):	6.1
Engine (kw/hp) :	74.4	Turbo:	<input checked="" type="checkbox"/> YES <input type="checkbox"/> NO	AdBlue:	<input checked="" type="checkbox"/> YES <input type="checkbox"/> NO
Air Conditioning:	<input checked="" type="checkbox"/> YES <input type="checkbox"/> NO	Sway Control:	<input type="checkbox"/> YES <input checked="" type="checkbox"/> NO	Stabilisers:	<input type="checkbox"/> YES <input checked="" type="checkbox"/> NO
Pallet Forks	<input checked="" type="checkbox"/> YES <input type="checkbox"/> NO	Fork Positioners	<input checked="" type="checkbox"/> YES <input type="checkbox"/> NO	GP Shovel	<input type="checkbox"/> YES <input checked="" type="checkbox"/> NO
Controls (Lever/Joystick):	Joystick		EPA Approved:	<input checked="" type="checkbox"/> YES <input type="checkbox"/> NO	
Hitch (Manual/Hydraulic):	man		4th Gear:	<input checked="" type="checkbox"/> YES <input type="checkbox"/> NO	
Body Work Condition (Any Damage):					
Glass (Any Damage):	good				
Road Lights:	<input checked="" type="checkbox"/> YES <input type="checkbox"/> NO	Mirrors:			
Paintwork:	good				
Ram Leaks or Damage:	nil				
Auxiliary Pipe Work:	<input checked="" type="checkbox"/> YES <input type="checkbox"/> NO	Deutz Engine, Boom Suspension, Rear Pick Up hitch,Bluetooth			
Double Acting:	<input type="checkbox"/> YES <input checked="" type="checkbox"/> NO				
Any other Comments on Condition:					
Radio:	<input type="checkbox"/> YES <input checked="" type="checkbox"/> NO				
Beacon:	<input checked="" type="checkbox"/> YES <input type="checkbox"/> NO				
All Photos Attached (Total 10)	Left Side	<input checked="" type="checkbox"/>	Right Side	<input checked="" type="checkbox"/>	4x Corner
	Hours Clock	<input checked="" type="checkbox"/>	Engine	<input checked="" type="checkbox"/>	Cab
	Engine Plate	<input checked="" type="checkbox"/>			Serial Plate
					Controls
Date of Last Service:			Date Next Service Due:		
Last Service Sheet Attached:	<input type="checkbox"/> YES <input type="checkbox"/> NO		Current Loler attached:	<input type="checkbox"/> YES <input type="checkbox"/> NO	
*SERVICE TO BE DONE BEFORE GOING TO SALES WITHIN 100HRS OF SERVICE DUE*					
Service Records Supplied:	<input type="checkbox"/> YES <input type="checkbox"/> NO				
Red Key with Machine with picture:	<input type="checkbox"/> YES <input type="checkbox"/> NO				
Manufacurers Decals with Machine:	<input checked="" type="checkbox"/> YES <input type="checkbox"/> NO				
Depot:	890				
Inspected By:			Date:	20.03.20	
To be signed off by Plant Sales:					
Inspected By:			Date:		

Technical sheet :

# **MLT 630-105 V**

---



Capacities		Metric	Imperial
Max. capacity	Q	3000 kg	6614 lbs
Max. lifting height	h3	6.1 m	20 ft
Max. outreach	l4	3.34 m	10 ft 11 in
Reach at max. height		0.9 m	2 ft 11 in
Breakout force with bucket		5840 daN	5840 daN
Weight and dimensions			
Unladen weight (with forks)		6920 kg	15256 lbs
Ground clearance center	m4	0.39 m	1 ft 3 in
Wheelbase	y	2.69 m	8 ft 10 in
Overall length to carriage (with hitch hook)	l11	4.78 m	15 ft 8 in
Front overhang		1.25 mm	0.049 in
Overall width	b1	2.13 m	7 ft
Overall cab width	b4	0.95 m	3 ft 1 in
Overall height	h17	2.37 m	7 ft 9 in
Tilt-down angle	a5	133 °	133 °
Tilt-up angle	a4	13 °	13 °
External turning radius (over tyres)	Wa1	3.68 m	12 ft 1 in
Standard tyres		Alliance - A580 - 405/70 R24 152A8	Alliance - A580 - 405/70 R24 152A8
Drive wheels (front / rear)		2 / 2	2 / 2
Steering wheels (front / rear)		2 / 2	2 / 2
Performances			
Lifting		6.5 s	6.5 s
Lowering		5 s	5 s
Extension		5.4 s	5.4 s
Retraction		3 s	3 s
Crowd		3.4 s	3.4 s
Dump		2.7 s	2.7 s
Engine			
Engine brand		Deutz	Deutz
Engine norm		Stage IV	Stage IV
Engine model		TCD 3.6 l	TCD 3.6 l
Number of cylinders - Capacity of cylinders		4 - 3621 cm³	4 - 220.97 in³
I.C. Engine power rating / Power (kW)		101 Hp / 74.4 kW	101 Hp / 74.4 kW
Max. torque / Engine rotation		410 Nm @ 1600 tr/min	410 Nm @ 1600 tr/min
Drawbar pull (Laden)		6540 daN	6540 daN
Reversible fan		Standard	Standard
Engine cooling system		3 radiators water intercooler hydraulic oil	3 radiators water intercooler hydraulic oil
Transmission			
Transmission type		M-VarioShift	M-VarioShift
Gearbox		M-Varioshift	M-Varioshift
Number of gears (forward / reverse)		2 / 2	2 / 2
Max. travel speed (may vary according to applicable regulations)		40 km/h	24.9 mph
Differential lock		Limited slip differential on front axle	Limited slip differential on front axle
Parking brake		Manual	Manual
Service brake		Oil-Immersed multi-discs braking on front axles	Oil-Immersed multi-discs braking on front axles
Hydraulics			
Hydraulic pump type		Gear Pump	Gear Pump
Hydraulic flow - Pressure		104 l/min - 250 Bar	104 l/min - 17 PSI
Flow sharing distributor		Option	Option
Tank capacities			
Hydraulic oil		94 l	20.68 gal
Fuel tank		78 l	17.16 gal
Diesel Exhaust fluid (AdBlue® type)		13 l	2.86 gal
Noise and vibration			
Noise at driving position (LpA) tested following NF EN 12053 norm		74 dB(A)	74 dB(A)
Environmental noise (LwA)		105 dB(A)	105 dB(A)
Vibration to whole hand/arm		< 2.50 m/s²	< 2.50 m/s²
Miscellaneous			

Miscellaneous			
Safety tractor homologation / cabin homologation		Safety tractor homologation - Cab ROPS - FOPS Level 2	Safety tractor homologation - Cab ROPS - FOPS Level 2
Controls		JSM	JSM

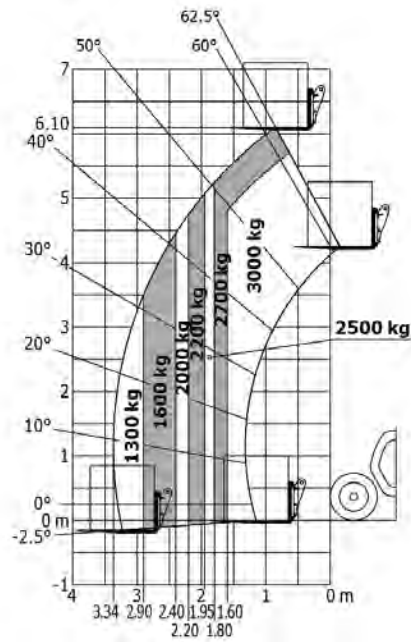
## Options / Finishing

S : Standard / O : Optional / - : Not available

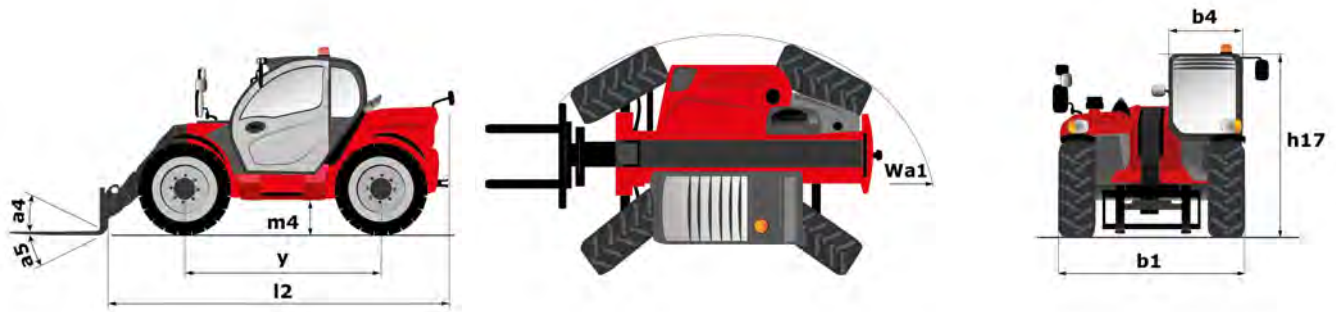
	Classic	Premium	Elite
General			
Self cleaning air prefilter	S	S	S
Automatic wheel alignment	O	O	S
"Active CRC" boom suspension	O	O	S
Additional fuel tank (42 l)	O	S	S
Automatic rotating towing hitch on counterweight	O	O	O
Ladder hitch with choice of hooks	O	O	O
Hydraulic pick-up hitch - low position	O	O	O
Manual rotating towing hitch	S	S	S
Comfort			
Low frequency air suspension cloth-covered seat (GRAMMER)	O	O	S
Mechanical cloth-covered seat (GRAMMER)	S	-	-
Air suspension cloth-covered seat (GRAMMER)	O	S	-
Tuner car radio (50 W)	S	-	-
Bluetooth USB car radio with integrated microphone (100 W)	O	S	-
Bluetooth USB car radio with extra microphone (100 W)	O	O	S
"Harmony" screen	S	S	-
"Vision" display	O	O	S
Air conditioning with manual adjustment	O	S	-
Air conditioning with automatic adjustment	O	O	S
vision screen (7")	O	O	S
Hydraulics			
Hydraulic attachment locking	O	O	O
1 pair of pre-fitted Double Action rear hydraulic couplers	O	O	O
Electricity / Safety			
Audio warning on reverse	O	O	O
Front and rear work lights on cab (x4: 2 front + 2 rear)	S	-	-
Front and rear LED work lights on cab (x4 : 2 front + 2 rear)	O	S	S
Extra front wiper	O	S	S
Electric mirror with de-icing	O	O	S
LED + (4 additional work lights)	O	O	O
Boom Work Lights (on fixed part) (x2)	O	O	O
Cab options			
Hand throttle	O	O	S
Boom options			
Easy Connect System (E.C.S.)	S	-	S
Continuous flow hydraulics	O	O	S
Return pipe to hydraulic oil tank	O	O	O
Electrovalve for 2 hydraulic functions (on boom head)	O	O	O
Engine & Filtration			
Auto reversing fan	S	S	S
Safety/Security options			
Hydraulic trailer brake	S	S	S

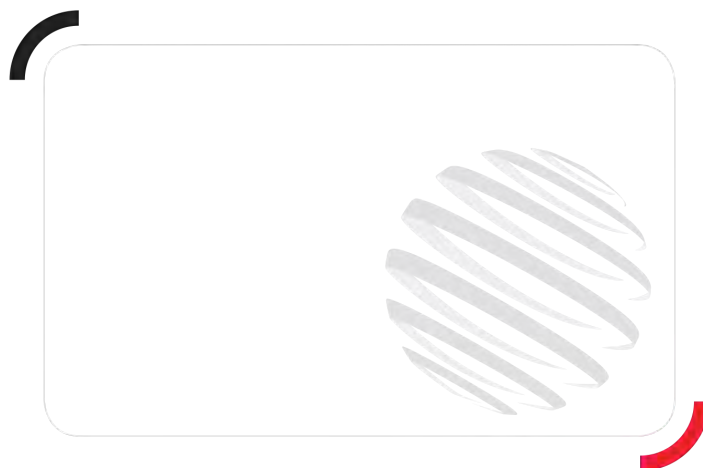
# Load chart

## Rough terrain load chart (EN 1459 B) Metric



## Dimensional drawing





Siège Social

430 rue de l'Aubinière - 44150 Ancenis Cedex - France

Tel: +33(0)2 40 09 10 11 - Fax: +33 (0)2 40 09 10 97

[www.manitou.com](http://www.manitou.com)



This brochure describes versions and configuration options for Manitou products which may be fitted with different equipment. The equipment described in this brochure may be standard, optional or not available depending on version. Manitou reserves the right to change the specifications shown and described at any time and without prior warning. The manufacturer is not liable for the specifications given. For more information, contact your Manitou dealer. Non-contractual document. Product descriptions may differ from actual products. List of specifications is not comprehensive. The logos and visual identity of the company are the property of Manitou and may not be used without authorisation. All rights reserved. The photos and diagrams contained in this brochure are provided for information only.

MANITOU BF SA - Limited company with board of directors - Share capital: 39,668,399 euros - 857 802 508  
RCS Nantes