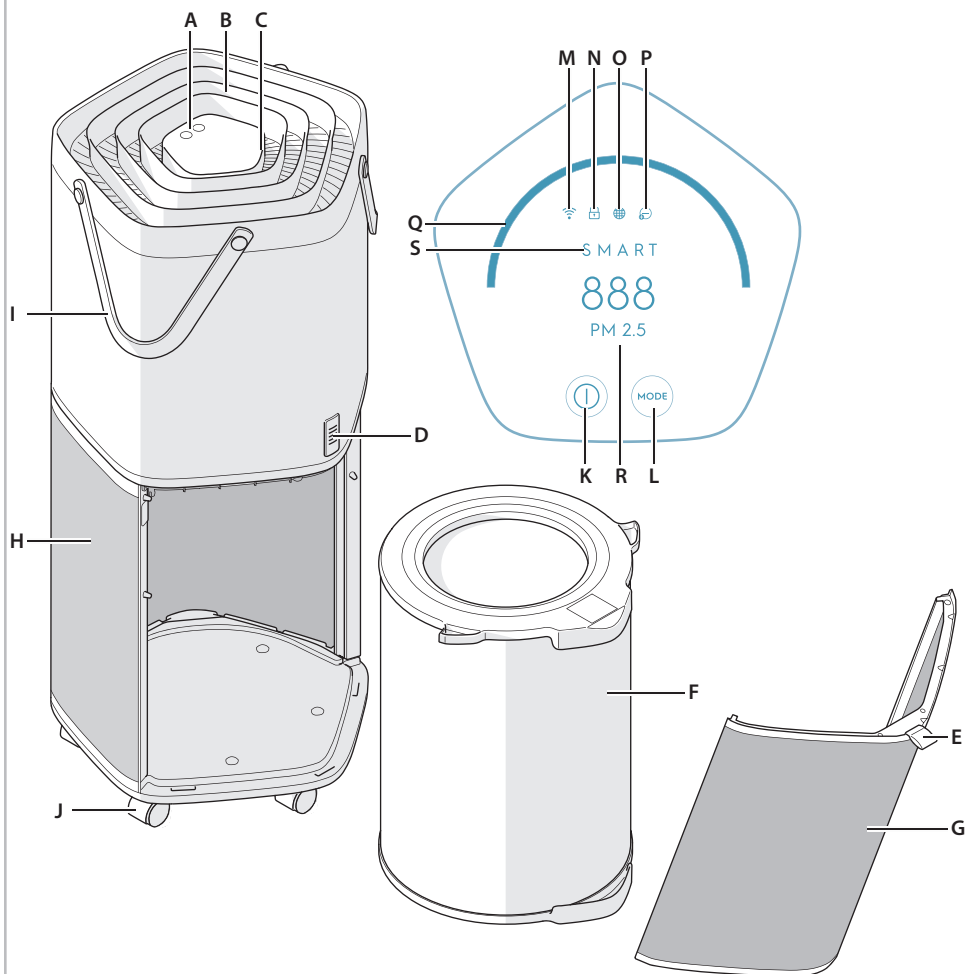




PURE **A9.2**

Instruction Book





Appliance:

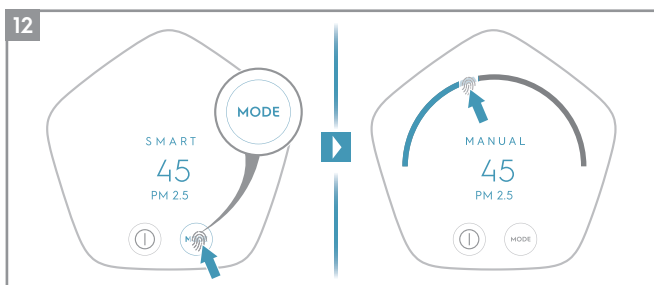
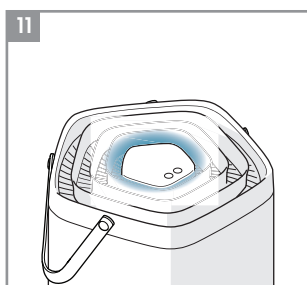
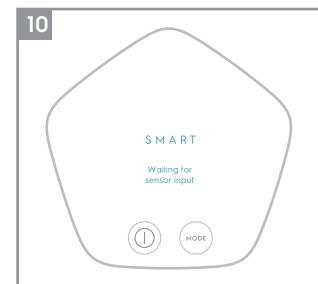
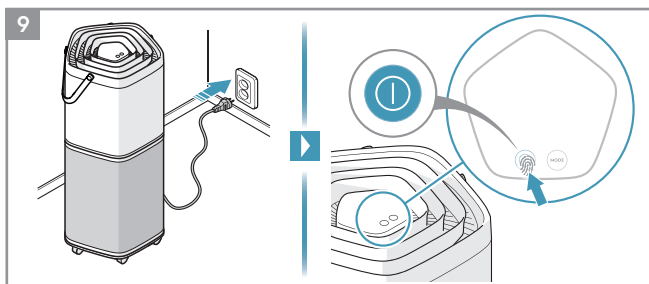
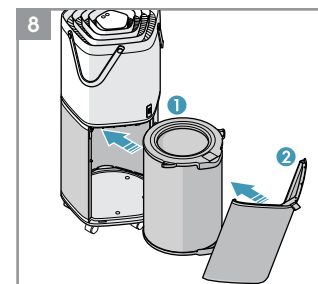
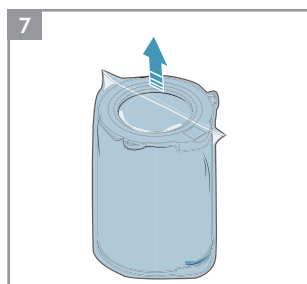
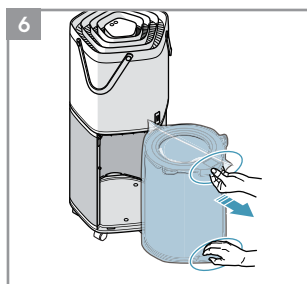
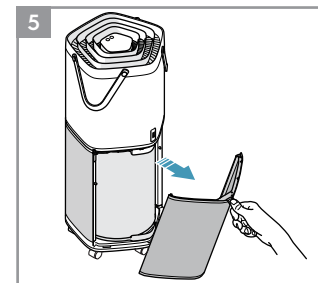
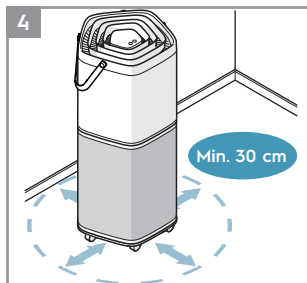
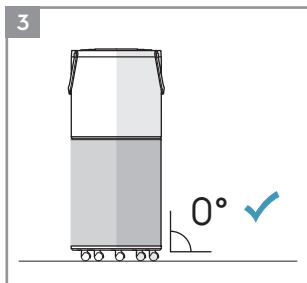
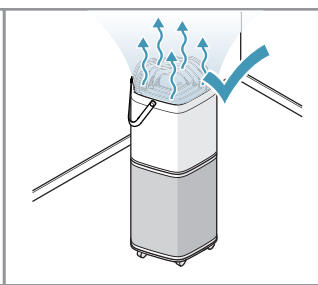
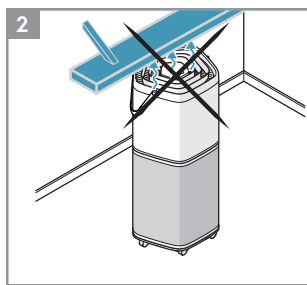
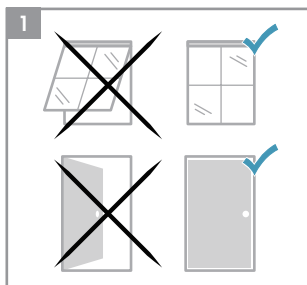
- A. Control panel
- B. Air outlet
- C. Air quality light
- D. Air quality sensor
- E. Fabric handle
- F. Multi-layer filter
- G. Air Intake door
- H. Air intake
- I. Product handles
- J. Wheels

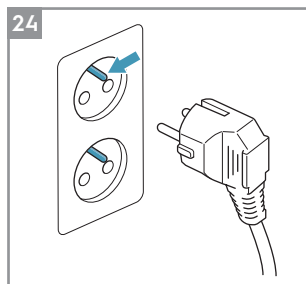
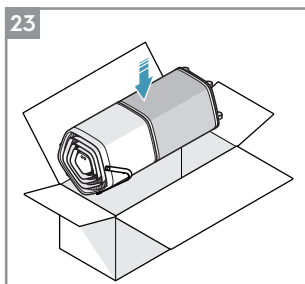
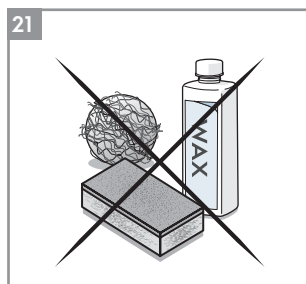
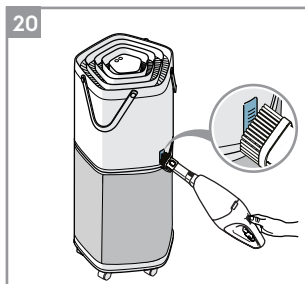
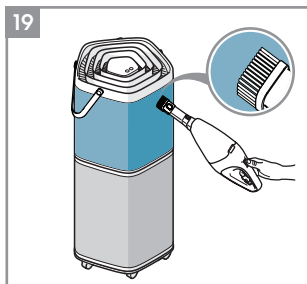
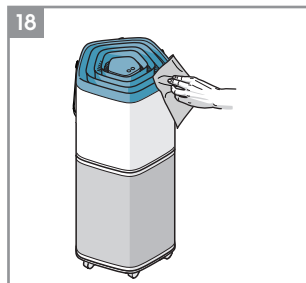
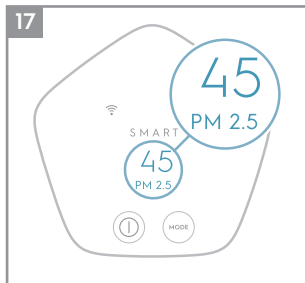
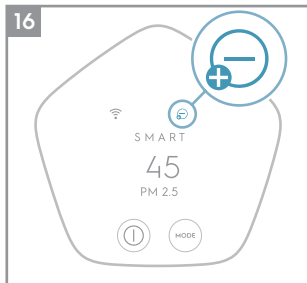
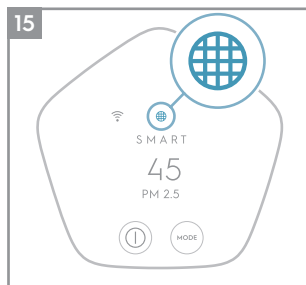
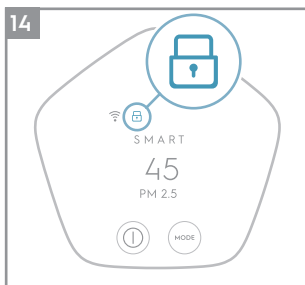
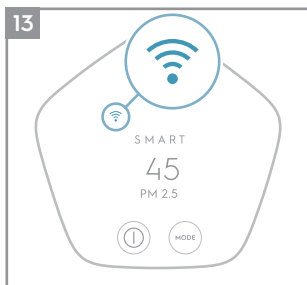
Control panel:

- K. On/Off button
- L. Mode button
- M. WiFi indicator
- N. Child lock indicator
- O. Filter change indicator
- P. Ionizer indicator
- Q. Fan speed slider
- R. Display screen
- S. Mode indicator

Features might be added or updated with new app releases.

Note: For reference only. Actual product components might vary slightly based on model purchased.





Features might be added or updated with new app releases.

SAFETY INFORMATION

This USER MANUAL provides specific operating instructions for your model. Use the unit only as instructed in this USER MANUAL. These instructions are not meant to cover every possible condition and situation that may occur. Common sense and caution must be practiced when installing, operating, and maintaining any appliance.

WARNING! Avoid fire hazard or electric shock. Do not use an extension cord or an adaptor plug. Do not remove any prong from the power cord.

This appliance can be used in 50Hz or 60Hz power supply without any change.

Do not, under any circumstances, cut, remove or bypass the grounding prong.

Do not store or use gasoline or other flammable vapors and liquids in the vicinity of this or any other appliance. Read product labels for flammability and other warnings.

Do not let water or any other liquid or flammable detergent enter the appliance to avoid electric shock and/or a fire hazard.

Do not touch the fan blade when removing the filter.

Children and Vulnerable People Safety

WARNING! Risk of suffocation, injury or permanent disability.

This appliance is not intended for use by persons (including children) with reduced physical, sensory or mental capabilities, or lack of experience and knowledge, unless they are under supervision or have been given instruction concerning use of the appliance by a person responsible for their safety.

Children should be supervised to ensure that they do not play with the appliance.

Cleaning and product maintenance shall not be made by children without supervision.

Children of less than 3 years should be kept away unless continuously supervised.

Keep all packaging away from children.

If the appliance has a child safety mode, we recommend you activate it.

Electrical Information

WARNING! Avoid fire hazard or electric shock.

If you are not sure the outlet is adequately grounded or protected by a time delay fuse or circuit breaker, have a qualified electrician install the proper outlet according to the National Electrical Code and applicable local codes and ordinances.

Do not use an extension cord or an adapter plug.

Never unplug the unit by pulling on the power cord. Always grip the plug firmly and pull straight out from the receptacle.

Do not pinch, bend, or knot the power cord.

Do not cut or damage the power cord. If the power cord is damaged, it should only be replaced by an authorized Electrolux servicer. This unit contains no user-serviceable parts. Always call an authorized Electrolux servicer for repairs.

Be sure to unplug the unit before cleaning to prevent shock or fire hazards.

Safety Precautions

CAUTION! Avoid Serious Injury or Death.

Do not insert or place fingers or objects into the air discharge area or front grille of the unit.

Do not start or stop the unit by unplugging the power cord or turning off the power at the electrical box.

In the event of a malfunction (sparks, burning smell, etc.), immediately stop the operation, disconnect the power cord, and call an authorized Electrolux servicer.

Do not operate the unit with wet hands.

CAUTION! Avoid Injury or damage to the unit or other property.

Do not direct airflow at fireplaces or other heat related sources as this could cause flare ups.

Do not climb on or place objects on the unit.

Do not hang objects off the unit.

Do not place containers with liquids on the unit.

Turn off the unit at the power source when it will not be used for an extended period of time.

Operate the unit with air filter in place.

Do not block or cover the intake grille, discharge area and outlet ports.

Ensure that any electrical/electronic equipment is 30cm away from the unit.

DISPOSAL



This symbol on the product indicates that this product contains a battery which shall not be disposed with normal household waste.



This symbol on the product or on its packaging indicates that the product may not be treated as household waste.

To recycle your product, please take it to an official collection point or to an Electrolux service center that can remove and recycle the battery and electric parts in a safe and professional way. Follow your country's rules for the separate collection of electrical products and rechargeable batteries.

ENGLISH

Thank you for choosing an Electrolux air purifier.

Always use original accessories and spare parts to get the best results. This product is designed with the environment in mind. All plastic parts are marked for recycling purposes.

BEFORE STARTING

- Read this manual carefully.
- Check that all parts described are included.
- Pay special attention to the safety precautions!

Picture pages 2-4

BEFORE FIRST USE

Place the product according to the instructions below for optimal operation and results:

- 1 Operate the air cleaner in an enclosed area. Close all doors, windows, and other openings connecting to the outside of the room.
- 2 Place the air cleaner in a location that does not restrict the airflow through the top of the appliance.
- 3 The appliance must be placed on a leveled floor that can support it.
- 4 There should be a minimum of 30 cm of clearance around the appliance.

Remove the plastic protective bag from the multi-layer filter:

- 5 Pull the Fabric handle outward to remove the air intake door.
- 6 Take out the multi-layer filter pulling it out by the handle.
- 7 Remove the plastic protective bag from the multi-layer filter.
- 8 Reinstall the multi-layer filter into the appliance.

OPERATION INSTRUCTIONS

TO TURN ON THE APPLIANCE

- 9 Plug in the appliance and tap (touch and release) the "ⓘ" button to turn it on.

NOTE: It will take about 10 seconds for the sensor to analyze the air quality, during this time the Loading LED and the Air quality light will pulsate slowly in white. Each time the appliance is turned on the SMART mode is activated automatically and the fan runs in low speed until the air quality analysis is complete.

SMART MODE

- 10 In this mode, the appliance will choose the fan speed automatically, based on the air quality level. This is the default mode each time the appliance is turned on.

NOTE: In "SMART" mode the fan speed cannot be

changed manually.

About the Air quality light

- 11 The appliance has an air quality sensor that analyzes the air quality.

The air quality light will show the real-time air quality through different colors of light. As shown below:

LIGHT'S COLOR	PM 2.5 (µg/m³)	AIR QUALITY
Blue	0-15	Good
Green	16-35	Average
Orange	36-75	Poor
Red	Above 75	Very Poor

NOTE: It will take about 10 seconds for the sensor to analyze the air quality each time the appliance is turned on. During this time, the air quality light will pulsate slowly in white.

Very high humidity conditions in the room might produce condensation in the sensors. This could affect the accuracy of the sensor readings.

MANUAL MODE

- 12 Tap the "MODE" button to switch the appliance to "MANUAL" mode. In this mode, the fan speed can be changed manually by touching the Fan speed slider.

NOTE: The fan speed will change gradually after a new fan speed is selected.

WIFI FUNCTION

- 13 This appliance is equipped with a WiFi module, which enables remote control and access to the full functionality of the system via our smartphone app. Download our app and follow the instructions for how to connect it with your appliance. When the connection is stablished, the WiFi indicator will light up.

CHILD LOCK FUNCTION

- 14 The Child lock can be activated and deactivated by long pressing the On/Off and the Mode button simultaneously for 4 seconds. This function can also be activated or deactivated via the app. When the Child lock is activated, the control panel of the appliance cannot be interacted with and the Child lock indicator light up.

FILTER CHANGE INDICATOR

- 15 The filter change indicator will light up to remind you to change the filter. Refer to the instructions in the app or the Electrolux website on where to purchase replacement filters. Ensure the plastic protective bag is removed from the replacement filter before use. After the filter is replaced, the filter change indicator will turn off automatically.

NOTE: The multi-layer filter cannot be washed, it can only be replaced.

IONIZER FUNCTION

- 16** The ionizer function can only be activated and deactivated by using the app (smartphone application). When this function is activated, the ionizer indicator lights up and the appliance generates ions to improve the unit's performance and with it the room's air quality.

SCHEDULE FUNCTION

In the app (smart phone application) you can set different schedules, for example that the fan speed goes down during night time and then goes back to normal speed during day time.

DISPLAY SCREEN

- 17** The air quality indicator can show actual room air quality in relation to different types of pollutants. PM 2.5, PM 10, TVOC and PM 1.0 values will be displayed on the screen in a loop.

CARE AND CLEANING

Cleaning the appliance

Unplug the appliance before cleaning to prevent shock or fire hazards.

- 18** The plastic parts of the appliance may be cleaned with an oil-free dry cloth or by using a vacuum cleaner with a soft brush.
- 19** The fabric on the appliance cannot be removed. Clean the fabric by using an oil-free dry cloth or a vacuum cleaner with a soft brush.

- 20** Dust accumulated in the Air quality sensor can result in incorrect sensor readings and affect performance. Use a vacuum cleaner with a soft brush to remove any dust that might accumulate in this area. Vacuum at least monthly.

- 21** Never use abrasive, harsh cleaners or wax when cleaning the unit.

- 22** **NOTE:** The multi-layer filter can not be washed, it can only be replaced.

CAUTION! Do not touch the fan blade when removing the multi-layer filter.

Storage

- 23** If you are not planning to use the appliance for a long time, cover it with plastic or return it to its carton.







Enjoy a great cleaning experience with your Electrolux air purifier PURE A9.2!

Electrolux reserves the right to change products, information and specifications without notice.

TROUBLESHOOTING

PROBLEM	SOLUTION
The air purifier does not operate.	<ul style="list-style-type: none">• Check if the power plug is disconnected. Push the power plug firmly into the electrical outlet.• Check if the house fuse is blown or the circuit breaker tripped. Replace the fuse with a time delay type or reset the circuit breaker.
The air quality does not improve.	<ul style="list-style-type: none">• Check if the windows or doors are opened. Close all doors, windows and other openings connecting to the outside of the room.

TROUBLESHOOTING

PROBLEM	SOLUTION
The fan does not operate.	<ul style="list-style-type: none"> Ensure that the air intake door (image 8) is closed properly, and the filter is installed correctly, then retry using the purifier.
The fan speed does not change after selecting a new fan speed.	<ul style="list-style-type: none"> The fan speed will decrease or increase gradually, this is normal. If it does not change after a prolonged period of time after the input then please reach out to an Electrolux authorized servicer for support.
The appliance is very loud.	<ul style="list-style-type: none"> Ensure that there are no obstacles near the appliance and that it has a minimum of 30 cm of clearance around it for optimal operation.
The appliance produces a strange smell.	<ul style="list-style-type: none"> The first time you use the purifier, you might perceive a plastic or paint smell. This is normal, but it should disappear quickly. If the smell persists or if you sense a burning smell, please disconnect the purifier and reach out to an Electrolux authorized servicer for support.
The app does not operate properly or it is not possible to onboard the appliance on the app.	<ul style="list-style-type: none"> Please reach out to an Electrolux authorized servicer for support on the topic.
The screen shows the error message "PM sensor failure". 	<ul style="list-style-type: none"> PM sensor is not working correctly. Please reach out to Electrolux authorized servicer for further diagnosis and repair or replacement.
The screen shows the error message "TVOC sensor error". 	<ul style="list-style-type: none"> TVOC sensor is not working correctly. Please reach out to Electrolux authorized servicer for further diagnosis and repair or replacement. You can continue to use the product in the short term for the purpose of purification.
The screen shows the error message "Fan motor stall". 	<ul style="list-style-type: none"> Please immediately unplug the unit and carefully check if the fan or air discharge is being obstructed. If nothing is blocking the fan or air discharge and the air intake door (image 8) is properly closed, please reach out to an Electrolux authorized servicer for further diagnosis and repair or replacement. Refrain from turning on the product until the issue is resolved.
The screen shows the error message "Comm. error". 	<ul style="list-style-type: none"> This represents a communication error. Please go to the app for further diagnosis or reach out to an Electrolux authorized servicer for support on this error.
The screen shows the error message "Filter door open". 	<ul style="list-style-type: none"> Please open the back air intake cover (image 8) and close it again. Ensure it is closed properly. If this does not resolve the error, please reach out to an Electrolux authorized servicer for support.
The screen shows the error message "RFID invalid". 	<ul style="list-style-type: none"> Please go to the app to check if the filter needs to be replaced, and if so please order a replacement filter for the unit. If the filter does not need to be replaced (or was replaced recently) and the error persists please reach out to an Electrolux authorized server for support.
For any further problems, contact an authorized Electrolux service centre.	

中国

伊莱克斯 (中国) 电器有限公司 上海小家电分公司
中国, 上海, 静安区共和新路1968号大宁国际广场
8号楼606室
办公电话: +86 21 3178 1000
传真: +86 21 3387 0368
售后服务: +86 9510 5801
服务邮箱: saservice.china@electrolux.com
网站: www.electrolux.com.cn
售后服务微信公众号:



台灣

新加坡商伊萊克斯股份有限公司 台灣分公司
22065新北市板橋區縣民大道2段68號9F
免付費客服專線: 0800-888-259
傳真: 886-2-8964-5269
電郵: service.tw@electrolux.com
網站: www.electrolux.com.tw

KOREA

일렉트로룩스 코리아(주)
서울특별시 중구 을지로100
파인애플빌딩 8층 9층 (우: 04551)
고객센터: 1566-1238
팩스: +(82) 2 6020-2272-3
이메일: homecare.krh@electrolux.com
웹사이트: www.electrolux.co.kr
엑세스리구매: www.electroluxshop.co.kr

INDONESIA

Electrolux Indonesia
Electrolux Building
Jl. Abdul Muis No 34, Petojo Selatan
Gambir, Jakarta 10160, Indonesia
Tel: +(62) 21 5081 7300
Fax: +(62) 21 5081 7399
Customer Care Services: +(62) 0804 111 999
Email: customercare@electrolux.co.id
Website: www.electrolux.co.id

PHILIPPINES

Electrolux Philippines Inc.
12th Floor, Cyber Sigma Building
Lawton Avenue
McKinley West
Taguig, Philippines 1634
Tel: +(63) 2 737 4757
Domestic Toll Free: 1 800 10 845-care (2273)
Customer Care Services: +(63) 2 845-care (2273)
Email: wecare@electrolux.com
Website: www.electrolux.com.ph

THAILAND

Electrolux Thailand Co Ltd
Electrolux Building
14th Floor 1910 New Petchburi Road
Bangkapi, Huay Kwang
Bangkok 10310
Thailand
Tel: +(66) 2 725 9100
Fax: +(66) 2 725 9299
Customer Care Services: +(66) 2 725 9000
Email: customercaethai@electrolux.com
Website: www.electrolux.co.th

VIETNAM

Electrolux Vietnam Ltd
Floor 9th, A&B Tower
76 Le Lai Street
Ben Thanh Ward - District 1
Ho Chi Minh City
Vietnam
Tel: +(84) 8 3910 5465
Fax: +(84) 8 3910 5470
Customer Care Services: 1800-58-8899
Email: vncare@electrolux.vn
Website: www.electrolux.vn

MALAYSIA

Electrolux Home Appliances Sdn Bhd
Lot C6, No. 28, Jalan 15/22,
Taman Perindustrian Tiong Nam,
40200 Shah Alam, Selangor
Malaysia
Customer Care Hotline: 1300-88-11-22
Customer Care Services Tel: (+60 3) 5525 0800
Customer Care Services Fax: (+60 3) 5524 2521
Email: malaysia.customercare@electrolux.com
Website: www.electrolux.com.my

SINGAPORE

Electrolux SEA Pte Ltd
1 Fusionopolis Place, Galaxis #07-10 (West Lobby)
Singapore 138522
Customer Care Hotline: +(65) 6727 3699
Fax: +(65) 6727 3611
Email: customer-care.sin@electrolux.com
Website: www.electrolux.com.sg

HONG KONG

大昌貿易行有限公司
電器維修中心
香港九龍灣啟祥道20號
大昌行集團大廈5樓
服務熱線: +(852) 3193 9888
電子郵件: ha@ead.dch.com.hk
網頁: www.electrolux.com.hk

AUSTRALIA

Electrolux Home Care & Small Domestic Appliances
ABN 51 004 762 341
163 O'Riordan Street, Mascot, NSW 2020, Australia
Customer Service Phone: 1300 365 305
Website: www.electrolux.com

NEW ZEALAND

Electrolux Home Care & Small Domestic Appliances
A division of Electrolux (NZ) Limited
3-5 Niall Burgess Road, Mt Wellington,
Auckland, New Zealand
Phone: (09) 573 2220
Customer Service Phone: 0508 730 730
Website: www.electrolux.com

Electrolux Middle East DMCC

4002, 40th Floor
BBI, Al Mazaya Business Avenue
Jumeirah Lakes Towers
Dubai
United Arab Emirates
Support: <https://www.electroluxarabia.com/contact-us/>



The software in the air purifier is partly based on free and open source software. To see the full copyright information and applicable license terms, please visit: <https://emtech.delta.electrolux.com/license>

For more information visit
electrolux.com