

Selecting the right Chromebook for your school, staff and students



This document walks you through four steps to help you choose the right Chromebook:

1

Identify the primary use case, or how the device will be used.

2

Map out the device specifications required for these use cases.

3

Make recommendations for devices that meet these needs.

4

Compare across the device ecosystem and find the right device.

Last Updated: May 2023
Next Update: January 2024

NOTE: Placement of devices within use case categories will be evaluated & updated bi-annually. Some configurations may only be available in select markets. Please contact your Channel or OEM representative regarding the availability of specific devices and configurations.

Finding the right Chromebook | Device Categories



Learning Anywhere

Classroom and distance learning devices

Supports multiple browser tabs, Google Workspace, **concurrently** with video conferencing with 49+ participants

Recommended software/apps

[Google Workspace for Education](#)

Google [Meet/Classroom](#)

[Zoom](#)

Minimum system requirements

RAM: 4GB

CPU:

- **Intel:** 4500 /5000 /5100/6000/ N100 / N200 / U300
- **AMD:** 3015Ce / Athlon Silver / Athlon Gold
- **MTK:** 8183, 8192, 8192T, 8186, 8186T, 8195
- **QC:** 7c+ Gen 1,2,3



Advanced Use

Teachers, staff, higher education, high school devices

Recommended for heavy workloads including content creation/editing, coding, running apps in virtualized environments. Supports heavy multitasking (large video calls with 49+ participants, multiple browser tabs, Google Workspace, external monitors/displays)

Recommended software/apps

VC/Comms: Google [Meet/Classroom](#), [Zoom](#), Cisco Webex, RingCentral, Slack and [more](#)

VDI: Itopia, Citrix, VMware, Parallels

Coding: Linux

Print: Papercut, Canon, HP Print, PrinterLogic, Ricoh

Productivity: [Google Workspace for Education](#)

Minimum system requirements

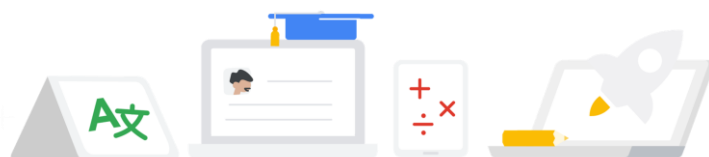
RAM: 8GB

CPU:

- **Intel:** Fan - i3 N305, i3, i5, i7, Fanless - i5*, i7
- **AMD:** Ryzen 3, 5, 7
- **MTK:** MT8195T

*Fanless i3 devices can support select use cases such as VDI

Devices marked for Advanced Use will be able to handle all the listed workloads in the Learning Anywhere segment. However, Learning Anywhere devices may not be able to optimally support Advanced Use workloads.



Finding the right Chromebook | User Profile & Features

The below table maps the education wayfinding segments to user profiles. Also listed are the form factors and features that would provide an ideal experience for each user profile. These are not requirements but recommendations.

In the following pages you can find a list of devices organized by manufacturer. This info can help you find the right device with the specs required to suit the users' needs.



Learning Anywhere

Intro to digital collaboration

Advanced Use

Powerful computing for heavy workloads

Grade 1-8

10-12" Touch-enabled Clamshell, Tablets (Detachable), Ruggedized

Grade 6-12

11-15" Touch-enabled Clamshell, Convertibles, Light and Ruggedized

Preferred Features: Garaged stylus, Dual cameras, 16:10 or 3:2

Recommended SKUs: 8GB RAM, 64GB+ Storage

Teachers/Staff/Higher Education

13-16" Convertibles, Thin & Light

Preferred Features: Garaged stylus, Fingerprint sensor, FHD+ Display, 1080p+ camera

Min. SKUs: 8GB RAM, 128GB+ Storage

User Profiles



AUE: Auto update expiration

You can find information about Auto update expiration for your devices [here](#).



Connected devices

Devices with WiFi 6/LTE/5G SKUs have been color coded on the following pages.



Zero-touch enrollment

For the most updated list of devices enabled for zero-touch enrollment, reference [here](#).



Supported peripherals

[Works With Chromebook](#) is peripherals certification program ensuring compatibility across all makes of Chromebook devices. Categories include headsets, webcams, mics, external storage and more.



Virtualization

ChromeOS partners with desktop and app virtualization solutions that expand what you can do on Chromebooks. Check out their sites to learn more: [Itopia](#), [Parallels](#), [Cameyo](#).

Finding the right Chromebook | Device Highlights

Learning Anywhere

Purpose-built education devices for introductory digital creation



Acer Chromebook 311 C722



Clamshell



11.6" HD



Acer Chromebook 511 C736



Clamshell



WIFI 6E



11.6" HD



Acer Chromebook Vero 712 CV872



Clamshell



WIFI 6E



12" HD



Acer Chromebook Spin 511 R753T



Convertible



WIFI 6



11.6" HD



Acer Chromebook Spin 511 R756(T)



Convertible



WIFI 6



11.6" HD



Acer Chromebook Spin 512 R856T(N)



Garaged Stylus



Convertible



WIFI 6E



12" HD

Advanced Use

Powerful, high performance devices recommended for teachers, staff and advanced students



Acer Chromebook Enterprise Spin 714 CP714-1WN



Garaged Stylus



Convertible



WIFI 6E



14" FHD



Acer Chromebook Enterprise Spin 514 CP514-3WH



Touchscreen



Convertible



WIFI 6



14" FHD



Acer Chromebook Enterprise Spin 514 CP514-2H



Touchscreen



Convertible



WIFI 6



14" FHD



Acer Chromebook Enterprise Spin 513 R841LT



Touchscreen



Convertible



LTE



13.3" FHD



Acer Chromebook Enterprise 515 CB515-1W(T)



Touchscreen



Clamshell



Numpad



15.6" FHD



Acer Chromebook Enterprise 514 CB514-1W(T)



Touchscreen



Clamshell

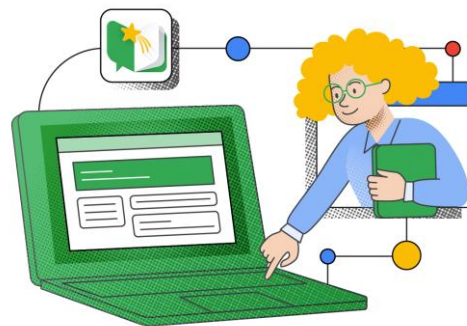


WIFI 6



14" FHD

Expand educational possibilities with the Screencast app and cast moderator



Screencast

Easily record, share, and view transcribed videos with the **Screencast app** built into ChromeOS*, and create a library of recorded lessons students can watch from home.

- Record and narrate lessons, even enhance them while recording by trimming text or adding handwritten notes with a touchscreen or [stylus](#)
- Automatically save recorded lessons to Google Drive – even create a link for anyone in your school's domain for easy and secure shareability
- Flip the traditional classroom model by recording a lesson ahead of time and assigning it to students as homework
- Provide a more inclusive learning experience with automatic translation of recorded transcripts into other languages

Cast Moderator

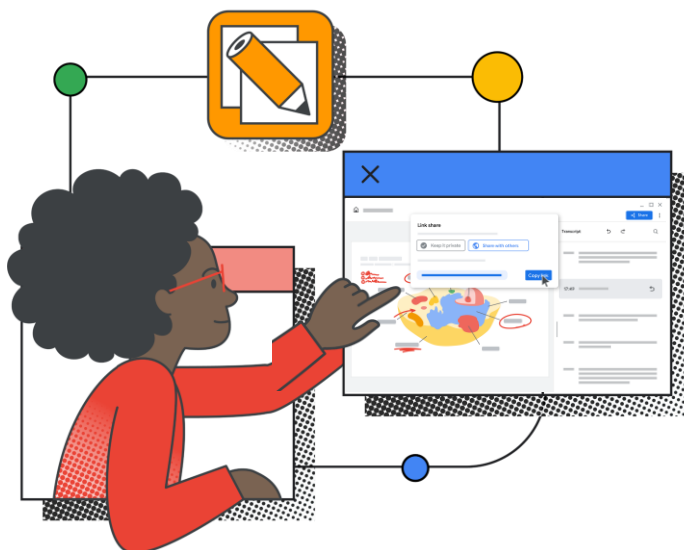
Inspire students to share their ideas on the big screen – while always staying in control of who's casting in your classroom – with **cast moderator**.

- Keep class on track by controlling who's casting and quickly turn off a cast with the click of a remote - not to mention wirelessly for classroom flexibility.
- Enable classes to securely cast with a 6-digit access code that refreshes each time a cast begins and for educator's cast receiver saves the code automatically to limit the times they need to enter the casting code.
- Encourage students to share ideas by inviting them to cast to show how they solved an algebra problem or present a report right from their Chromebook

Better together

Screencast app and **cast moderator** work together seamlessly to let educators and students wirelessly share their screens right from their Chromebooks – with robust moderation features for educators. Control who's presenting to the big screen and turn off screencasting with the click of a button.

As you control the classroom casting experience, you can record, narrate, and transcribe your lessons, even draw or write on your screen as you record using a touchscreen or stylus to diagram or highlight key concepts.



*Available with ChromeOS M108 higher



[Learn more about Screencast and cast moderator](#)

Learning Anywhere

| | | | |
|--|--|--|---|
| CB 712 (C871/C871T) [CM5205/ PMD6405U, 4GB] Clamshell, 12" touchscreen (optional) | | | |
| CB 311 (C722/T) [MTK8183, 4GB] Clamshell, 11" touchscreen (optional) | | | |
| CB 314 (C934/C934T) [4500/5100/PQC6000, 4/8GB] Clamshell, 14" touchscreen (optional) | | | |
| CB 314 (C922) [MT8183, 4GB] Clamshell, 14" screen | | | |
| CB 511 (C741/L/LT) [SC7180/7c, 4/8GB] Clamshell, 11" touchscreen (optional) | | | |
| CB 512 (C852/C852T) [N4500/5100], 4/8GB] Clamshell, 12" touchscreen (optional) | | | |
| CB 511 (C734, C734T) [N4500/5100, 4/8GB] Clamshell, 11" touchscreen (optional) | | | |
| CB 511 (C736/T/L/LT/-TCO/T-TCO/L-TCO/LT-TCO) [N100/200, 4/8GB] Clamshell, 11" touchscreen (optional) | | | |
| CB Spin 511 (R753T/TN) [N4500/5100, 4/8GB] Convertible, 11" touchscreen | | | G |
| CB Spin 511 (R756T/TN/T-TCO/TN-TCO) [N100/200, 4/8GB] Convertible, 11" touchscreen | | | G |
| CB Spin 512 (R853TA/TNA) [N4500/5100/PQC6000, 4/8GB] Convertible, 12" touchscreen | | | G |
| CB Spin 512 (R856T/TN/T-TCO/TN-TCO) [N100/200, 4/8GB] Convertible, 12" touchscreen | | | G |
| CB Spin 513 (R841T/LT) [SC7180, 4/8GB] Convertible, 13" touchscreen | | | |
| CB Spin 311 (R722T) [MT 8183, 4GB] Convertible, 11" touchscreen | | | |
| CB Spin 314 [N4500,5100,6000, 4/8GB] Convertible, 14" touchscreen | | | |
| CB Tab 510 [Qualcomm, 4GB] Tablet, 10" touchscreen | | | |
| CB Vero 712 (CV872/CV872T) [CM7305/PMD8505, 4/8GB] Clamshell, 12" touchscreen (optional) | | | |

Advanced Use

| | | | |
|---|--|--|---|
| CB 712 (C871/T) [i3, 8GB] Clamshell, 12" touchscreen (optional) | | | |
| CB Spin 713 (CP713-2W/-3W) [i3/i5/i7, 8/16GB] Convertible, 13" touchscreen | | | G |
| CB Spin 514 (CP514-1W/-1WH) [R3/5/7, 8/16GB] Convertible, 14" touchscreen | | | |
| CB Spin 514 (CP514-3WH) [R3/R5/R7, 8/16GB] Convertible, 14" touchscreen | | | |
| CB Spin 714 (CP714-1WN) [i3/i5/i7, 8/16GB] Convertible, 14" touchscreen | | | G |
| Chromebox CX14 [i3/i5/i7, 8/16GB] Mini PC | | | |
| Chromebox CX15 [i3/i5/i7, 8/16GB] Mini PC | | | |
| CB 514 (CB514-1W/-1WT) [i3/i5/i7, 8GB] Clamshell, 14" touchscreen (optional) | | | |
| Spin 514 (CP514-2H) [i3/i5/i7, 8GB/16GB] Convertible, 14" touchscreen | | | G |
| CB 515 (CB515-1W/-1WT) [i3/ i5/ i7, 8GB/16GB Clamshell, 15" touchscreen (optional) | | | |
| CB Vero 514 (CBV514-1H/HT) [i3/i5/i7, 8/16GB] Clamshell, 14" touchscreen (optional) | | | |
| CB Vero 712 (CV872/CV872T) [i3, 8GB] Clamshell, 12" touchscreen (optional) | | | |



KEY



Devices that have WiFi 6 enabled SKUs



Stylus compatible | G = Garaged stylus included



Devices that have an LTE/5G SKU