

SALE NOW THROUGH JANUARY 31<sup>ST</sup>



# INVENTORY CLEARANCE SALE!



Your Best Choice for 72 Years Just Keeps Getting Better!

SALE HOURS: MONDAY THROUGH FRIDAY 9 – 6 PM • SATURDAY 9 – 5 PM • SUNDAY HOME WITH FAMILY

**BUILT TO DO 25 YEARS WORTH OF LAUNDRY!**

**Speed Queen.**

**BEST WARRANTY IN THE INDUSTRY!**

**7 YEAR LIFETIME** Full Parts & Labor, Limited on motor and cabinet. Limited on Stainless Steel Wash Tub and Outer Drain Tub



**SAVE UP TO \$320 ON PAIRS**

**SAVE BIG on LG's Stainless Steel 4 Piece Package**

**SAVE \$2570**

**\$800 MAIL IN REBATES!**



**30 CU. FT. SMART WI-FI ENABLED REFRIGERATOR WITH CRAFT ICE™ MAKER**

- Tall Ice & Water Dispenser® with Measured Fill
- # LRMD53006S

**30" ELECTRIC SINGLE OVEN RANGE**

- InstaView® Window
- EasyClean®
- # LSEL6335F

**2.1 CU. FT. OVER-THE-RANGE MICROWAVE**

- Sensor Cook
- Auto Cook Presets
- # MVEL2137F

**24" BUILT-IN DISHWASHER**

- QuadWash® Pro
- Dynamic Heat Dry™
- TrueSteam®
- # LDTH7972Ss

**GE APPLIANCES**

**24" TALL TUB BUILT-IN DISHWASHER**

- Dry Boost™
- Steam + Sani
- Water Leak Sensor
- # GDF535PSRSS

Reg. \$649 **NOW ONLY \$398!**

**SAVE \$251**



**Whirlpool®**

**25 CU. FT. SIDE-BY-SIDE REFRIGERATOR**

- Stainless Steel
- Gallon Door Bins
- SpillGuard Glass Shelves
- # ED5FVGXWS

Reg. \$1499 **NOW ONLY \$1097!**

**LIMITED QUANTITIES**

**SAVE \$402**



## 0% INTEREST FOR 24 MONTHS\*

\*When paid in full on qualifying purchases with select financing companies made now through January 31st, 2024. Interest will be charged to your account from the purchase date if the promotional balance, including optional charges, is not paid in full within 24 months or if you make a late payment. Equal Monthly Payments Required. See back page for details.

**SAMSUNG**

**32" Smart Full HD TV**

- 1080p Resolution • Micro Dimming Pro
- # UN32N5300

**NOW ONLY \$229!**

**SAVE \$50**



**SAMSUNG**

**43" 4K UHD Smart TV # QN43Q60C**

- Edge-lit Dual LED Backlight
- Motion Xcelerator

**NOW ONLY \$479!**



**HOME THEATER**

**CUSTOM FABRIC PACIFICO MANUAL THEATER SEATING**

**PALLISER**

**FABRIC STARTING AT \$797!**



**PLUS \$100 INSTANT CASH towards SURROUND SOUND SYSTEM of YOUR CHOICE!**

**SAVE \$200**

**65" CLASS QLED SMART TV**

- Quantum Processor
- 4K Upscaling Optimization
- #QN65Q60C

**SAMSUNG 4K ULTRA HD TV**

**NOW ONLY \$699!**



**PLUS \$200 INSTANT CASH towards SURROUND SOUND SYSTEM of YOUR CHOICE!**

**SAVE \$400**

**SONY 4K ULTRA HD TV**

**75" 4K UHD Smart TV**

- Motionflow™ XR 240
- High Dynamic Range
- # KD75X85K

**NOW ONLY \$1099!**



**PLUS \$200 INSTANT CASH towards SURROUND SOUND SYSTEM of YOUR CHOICE!**

**SAVE \$800**

**85" Smart QLED 4K Q80C**

- Wide Viewing Angle
- Real Depth Enhancer
- Motion Xcelerator Turbo+
- # QN85Q80C

**SAMSUNG 4K ULTRA HD TV**

**NOW ONLY \$1999!**



## Earn up to an Additional \$500 In-Store Gift Card\*\*

\*\*with qualifying furniture purchase. See store for details.

**MEGA MOTION** Products for BETTER LIVING

**GENEVA Recliner** **NOW ONLY \$349<sup>95</sup>!**

**LeatherItaliausa** SINCE 1997

**MEGA MOTION Lift Chair** **NOW ONLY \$799<sup>95</sup>!**

- For smaller users



**Sealy**

**UP TO \$200 BONUS JEFF LYNCH IN-STORE GIFT CARD!**

**SAVE \$322** with purchase of select Sealy models

**CROWN JEWEL COLLECTION SECOND AND PARK Firm Tight Top Queen Mattress**

**NOW ONLY \$377** Reg. \$699



**15 BILLION DOLLAR BUYING POWER!** | **WE SERVICE WHAT WE SELL!** | **TURN KEY INSTALLATION!** | **SAME DAY EXPRESS DELIVERY!** | **ECO-FRIENDLY** • FREE RECYCLING • FREE HAUL AWAY

**L JEFF LYNCH**

Appliances ■ Electronics ■ Bedding ■ Furniture

ALWAYS THE LOWEST PRICE **GUARANTEED** PERIOD.

**YOUR BEST CHOICE FOR 72 years**

[www.jefflynch.com](http://www.jefflynch.com)

17 Roper Mountain Rd. • Greenville, SC 29607 • (864)268-3101

HOURS: Monday-Friday 9am-6pm • Saturday 9am-5pm • Sunday Home With Family!

**UP TO \$400 Instant Cash** towards the **Sound System of Your Choice** with any TV 65" or larger!

**BIG GAME SAVINGS EVENT** Receive up to **\$500** toward In-Home Delivery or Installation of a Qualifying 4K and 8K TV or Soundbar!  
01/28/24 thru 02/10/24. See sales associate for details.

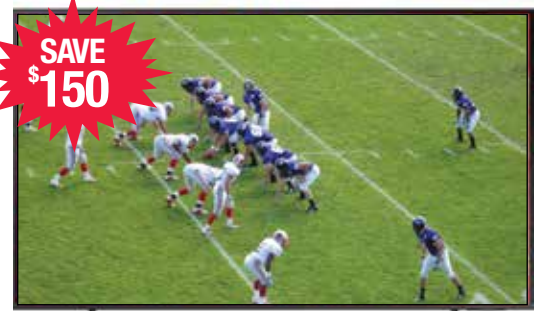
LED 4K SMART TVS



**50" 4K Smart QLED UHD TV with HDR**  
 • Quantum Dot technology  
 • Quantum HDR  
 • 10-bit Support  
 #QN50Q60C  
**SAMSUNG 4K ULTRA HD TV**  
**NOW ONLY \$579!**



**50" X85K Smart LED 4K UHD TV with HDR**  
 • Native Refresh Rate: 120Hz  
 • Google TV Interface  
 #KD50X85K  
**SONY 4K ULTRA HD TV**  
**NOW ONLY \$699!**



**55" QLED Smart TV**  
 • ConnectShare™  
 • Motion Xcelerator  
 #QN55Q60C  
**SAMSUNG 4K ULTRA HD TV**  
**NOW ONLY \$599!**



**65" LED 4K UHD Smart HDR TV**  
 • Motionflow Technology  
 • 4K HDR processor X1™  
 #KD65X85K  
**SONY 4K ULTRA HD TV**  
**NOW ONLY \$899!**



**55" LED 4K HDR Google TV**  
 • Billions of accurate colors  
 • Google TV with voice search  
 #XR55X90L  
**SONY 4K ULTRA HD TV**  
**NOW ONLY \$999!**



**65" 4K UHD Smart QLED TV**  
 • Quantum Dot Color  
 • Quantum HDR  
 #QN65Q80C  
**SAMSUNG**  
**NOW ONLY \$1099!**



**65" LED 4K HDR TV**  
 • Google TV™ with Google Assistant™  
 • Supports Apple Airplay. 1, 15  
 #XR65X90L  
**SONY 4K ULTRA HD TV**  
**NOW ONLY \$1099!**



**55" The Frame 4K QLED TV**  
 • Quantum Processor 4K  
 #QN55LS03B  
**SAMSUNG 4K ULTRA HD TV**  
**NOW ONLY \$1199!**



**65" 4K UHD Smart webOS22 with ThinQ AI TV**  
 • a7 Gen5 AI Processor 4K  
 • Quantum Dot NanoCell Color Technology  
 #65QNED85UQA  
**LG Life's Good 4K ULTRA HD TV**  
**NOW ONLY \$1099!**



**75" LED 4K HDR Google TV**  
 • Billions of accurate colors  
 • Voice Search with Google Assistant™  
 #XR75X90L  
**SONY 4K ULTRA HD TV**  
**NOW ONLY \$1499!**



**65" 4K QLED 4K Smart TV**  
 • Super Precise LEDs  
 • Quantum HDR+ 4k Resolution  
 #QN75Q80C  
**SAMSUNG**  
**NOW ONLY \$1599!**



**75" 4K UHD Smart webOS 22 w/ ThinQ AI TV**  
 • Mini-LED Backlighting  
 • Precision Dimming  
 #75QNED85UQA  
**LG Life's Good 4K ULTRA HD TV**  
**NOW ONLY \$1699!**

OLED TVS



**55" C3 Evo OLED TV**  
 • Easy-access gaming controls  
 • Dolby Atmos® & Vision  
 #OLED55C3PUA  
**LG Life's Good 4K ULTRA HD TV**  
**NOW ONLY \$1299!**



**65" C3 Evo OLED TV**  
 • Easy-access gaming controls  
 • Dolby Atmos® & Vision  
 #OLED65C3PUA  
**LG Life's Good 4K ULTRA HD TV**  
**NOW ONLY \$1599!**



**75" Class Neo QLED Smart TV**  
 • Quantum Matrix Technology  
 • Motion Xcelerator Turbo Pro  
 #QN75QN95C  
**SAMSUNG 4K ULTRA HD TV**  
**NOW ONLY \$2799!**

OLED TVS

**SONY**  
**Blu-ray Disc™ Player**  
 • Built-in Wi-Fi  
 • Smart Capable  
 #BDPBX370  
**SAVE \$10**  
**NOW ONLY \$79!**

**SONY**  
**Streaming 4K Ultra HD Hi-Res Audio Wi-Fi Built-In Blu-Ray Player**  
 • 4K Streaming Contents  
 • Wireless Connectivity  
 #UBPX700/M  
**NOW ONLY \$259!**

**SONOS**  
**Sonos Move 2 Smart Speaker**  
 • Set up w/WiFi, a powerhouse for outdoor entertaining and large rooms®  
 #MOVE2  
**NOW ONLY \$449!**

**SAMSUNG**  
**Freestyle Projector**  
 • Optimizes screen size and auto-focuses plus access your streaming apps & favorite playlist, use voice assistants.  
 #SP-LSP3BLAXZA  
**SAVE \$200**  
**NOW ONLY \$599!**

**SONOS**  
**Sonos Arc Soundbar**  
 • Dolby Atmos • Apple Airplay 2  
 • Voice Enabled  
 • Touch controls  
 #ARCG1U51  
**NOW ONLY \$899!**

**SAMSUNG**  
**Powered Sound Bar with Wireless Subwoofer**  
 • Feel surrounded with Q-Symphony sound  
 • Dolby Atmos  
 #HW-Q990C  
**NOW ONLY \$1399!**  
**SAVE \$500**

**LG**  
**LG SC9S Sound Bar**  
 • Immersive Listening Experience with IMAX® ENHANCED  
**SAVE \$300**  
**NOW ONLY \$699!**

# America's Best Washer & Dryer Brands at The Lowest Prices Guaranteed!



**MAYTAG**

**4.5 CU. FT. TOP LOAD WASHER**  
 • Large Load Capacity  
 • Deep Fill  
 # MW4505MW

**7.0 CU. FT. ELECTRIC DRYER**  
 • Heavy-Duty Motor  
 • Wrinkle Control Option  
 # MED4500MW



**GE**

GE APPLIANCES

**4.2 CU. FT. TOP LOAD WASHER**  
 • Deep Clean Cycle  
 #GTW335ASNWW

**7.2 CU. FT. ELECTRIC DRYER**  
 • Aluminized Alloy Drum  
 • Auto Dry  
 #GTD33EASKWW

LIMITED QUANTITIES!

SAVE \$222 EACH

Reg. \$799 Each  
**NOW ONLY \$577! EACH**

SAVE \$201

Reg. \$699 Each  
**NOW ONLY \$498!**

SAVE \$201

Reg. \$699 Each  
**NOW ONLY \$498!**



**LG**  
 Life's Good

**4.1 CU. FT. ULTRA LARGE CAPACITY TOP LOAD WASHER**  
 • 4-Way™ Agitator  
 • SlamProof® Glass Lid  
 • Deep Fill Option  
 • Intelligent Electronic Controls  
 # WT6105CW

**7.3 CU. FT. ELECTRIC DRYER**  
 • Sensor Dry  
 • FlowSense™ Duct Clogging & Lint Filter Indicators  
 #DLE6100W

SAVE \$201 EACH

Reg. \$749 Each  
**NOW ONLY \$548! EACH**



**Whirlpool**

**4.2 CU. FT. FRONT LOAD WASHER**  
 • 8 Wash Cycles  
 • Adaptive Wash Technology  
 # WFW75WEFW

**7.4 CU. FT. ELECTRIC DRYER**  
 • Wrinkle Shield Plus  
 • Eco Boost  
 # WED75HEFW

LIMITED QUANTITIES!

SAVE \$151 EACH

Reg. \$849 Each  
**NOW ONLY \$698! EACH**



**LG**  
 Life's Good

**4.5 CU. FT. FRONT LOAD WASHER**  
 • 6Motion™ Technology  
 • ColdWash™ Technology  
 • Direct Drive Motor 10-Year Limited Warranty  
 #WM3400CW

**7.4 CU. FT. ELECTRIC DRYER**  
 • Sensor Dry  
 • FlowSense™ Duct Clogging Indicator  
 • ENERGY STAR® Certified  
 #DLE3400W

SAVE \$151 EACH

Reg. \$899 Each  
**NOW ONLY \$748! EACH**



**Electrolux**

**4.4 CU. FT. FRONT LOAD WASHER**  
 • SmartBoost™ Stain Remover  
 • Technology Steam # ELFW7637AT

**8.0 CU. FT. LARGE CAPACITY ELECTRIC DRYER**  
 • Predictive Dry  
 • Perfect Steam™ Wrinkle Release Option # ELFE7637AT  
 Shown on optional pedestals

SAVE \$950 ON THE PAIR

**ALL NEW!**  
 Exclusive smart boost technology for stain removal

## 0% INTEREST FOR 24 MONTHS\*

\*When paid in full on qualifying purchases with select financing companies made now through January 31st, 2024. Interest will be charged to your account from the purchase date if the promotional balance, including optional charges, is not paid in full within 24 months or if you make a late payment. Equal Monthly Payments Required. See back page for details.

## Best Selection of Refrigerators at the Lowest Prices Ever!



**FRIGIDAIRE**

**25.5 CU. FT. SIDE-BY-SIDE REFRIGERATOR**  
 • EasyCare Stainless Steel  
 • External Ice and Water Dispenser  
 # FFSS2615TS

LIMITED QUANTITIES

SAVE \$502

Reg. \$1499  
**NOW ONLY \$997!**



**KitchenAid**

**26.8 CU. FT. REFRIGERATOR WITH EXTERIOR ICE & WATER DISPENSER**  
 • EXTENDFRESH System monitors refrigerator & freezer temps  
 • FRESHCHILL Full-Width Pantry with adjustable temp settings  
 # KRFF577KPS

SAVE \$801

Reg. \$3699  
**NOW ONLY \$2898!**



**LG**  
 Life's Good

**30 CU. FT. SMART REFRIGERATOR WITH CRAFT ICE™**  
 • Door-in-Door® Full-Convert™ drawer 5 temp settings  
 • Tall Ice & Water Dispenser® with Measured Fill  
 # LRMD33006S

SAVE \$601

Reg. \$3599  
**NOW ONLY \$2998!**



**LG**  
 Life's Good

**20 CU. FT. TOP-FREEZER REFRIGERATOR**  
 • Humidity-controlled crispers keep produce fresh  
 • Rated Energy Star  
 # LTCS20020W

SAVE \$79

Reg. \$777  
**NOW ONLY \$698!**



**FRIGIDAIRE**

**28 CU. FT. FRENCH DOOR BOTTOM MOUNT REFRIGERATOR**  
 • Large Door Bin Storage  
 • Purepour™ Water Filter  
 # FRFS2823AS

SAVE \$1002

Reg. \$2699  
**NOW ONLY \$1697!**



**LG**  
 Life's Good

**27 CU. FT. SIDE-BY-SIDE REFRIGERATOR**  
 • Smooth Touch Ice Dispenser  
 • Multi-Air Flow™ System  
 # LRSXS2706V

SAVE \$467

Reg. \$1665  
**NOW ONLY \$1198!**



**GE APPLIANCES**

**25.6 CU. FT. FRENCH DOOR REFRIGERATOR**  
 • Fingerprint resistant stainless  
 • Space-saving icemaker  
 • LED lighting  
 # GFE26JYMFS

SAVE \$902

Reg. \$2699  
**NOW ONLY \$1797!**



**C A F E**  
 DISTINCT BY DESIGN™

**27.8 CU. FT. 4-DOOR FRENCH-DOOR REFRIGERATOR**  
 • LED Light Wall  
 • Ice and Water Dispenser  
 #CVE28DP2NS1

SAVE \$440

Reg. \$2399  
**NOW ONLY \$1898!**



**LG**  
 Life's Good

**28 CU. FT. FRENCH DOOR REFRIGERATOR**  
 • Tall Ice & Water Dispenser  
 • SlimSpacePlus Ice System  
 • Door Cooling+  
 # LRFS28XBS

SAVE \$501

Reg. \$2399  
**NOW ONLY \$1898!**

**FRIGIDAIRE**  
1/3 HP WASTE DISPOSAL  
• Stainless Steel Grinding System  
• High-Torque GrindPro™ Magnet Motor  
#FFD331DMS  
**NOW ONLY \$59!**

**FRIGIDAIRE**  
1/2 HP WASTE DISPOSAL  
• Easy Fit Design  
• High-Torque GrindPro™ Magnet Motor  
#FFD501DMS  
**NOW ONLY \$99!**

**MOEN**  
3/4 HP WASTE DISPOSAL  
• Continuous Feed  
• Universal Xpress Mount™  
#GX575C  
**NOW ONLY \$139!**

**MOEN**  
1 HP VORTEX™ MOTOR WASTE DISPOSAL  
• Universal Xpress Mount™  
• SoundSHIELD™ Design  
#GX100C  
**NOW ONLY \$279!**

**FRIGIDAIRE**  
24" BUILT-IN DISHWASHER  
• Enhanced drying with MaxDry™  
• Skip Pre-rinsing DishSense® Sensor Technology  
• Sanitize Option  
#FDPH4316AS  
Reg. \$629  
**NOW ONLY \$398!**

**LG**  
Life's Good  
24" BUILT-IN DISHWASHER  
• QuadWash™ System  
• 15 Place Settings  
• Dynamic Dry™  
#LDFN3432T  
Reg. \$799  
**NOW ONLY \$498!**

**BOSCH**  
Invented for life  
24" BUILT-IN DISHWASHER  
• PrecisionWash® with sanitize option  
• Includes 3rd rack  
#SHXM4AY55N  
Reg. \$899  
**NOW ONLY \$697!**

**FRIGIDAIRE**  
**FREEZER event**

**SAVE OVER 30%**  
on Select Frigidaire Freezers

**GE APPLIANCES**  
7.0 CU. FT. CHEST FREEZER  
• Garage Ready  
• Power Outage Promise  
#FCM75STWW  
LIMITED QUANTITIES  
**NOW ONLY \$337!**

**FRIGIDAIRE**  
24" BUILT-IN DISHWASHER  
• Complete Clean 5 Level Wash System  
• Energy Saver Dry Option  
• Fits up to 12 place settings  
#FDFC4221AS  
Reg. \$479  
**NOW ONLY \$328!**

**BOSCH**  
Invented for life  
24" BUILT-IN DISHWASHER  
• Prevent leaks with AquaStop®  
• Only 50 dBA!  
#SHE3AEM2N  
**NOW ONLY \$547!**

**Whirlpool**  
24" BUILT-IN DISHWASHER  
• 3rd Rack  
• Adjustable 2nd rack  
• Fan Drying Technology  
#WDT730HAMZ  
Reg. \$829  
**NOW ONLY \$498!**

**KitchenAid**  
24" BUILT-IN DISHWASHER  
• Stainless Steel Interior  
• Express Wash Cycle  
• Quiet cleaning 39 dBA  
#KDTE204KPS  
Reg. \$1149  
**NOW ONLY \$798!**

**FRIGIDAIRE**

**1.6 CU. FT. OVER-THE-RANGE MICROWAVE**  
• Stainless Steel  
• Cooktop LED Lighting  
#FFMV1645TS  
Reg. \$329

**FRIGIDAIRE**  
30 IN. FREESTANDING ELECTRIC RANGE  
• One-Touch Self Clean  
• Quick Boil  
• Extra-Large Element  
• SpaceWise® Expandable Elements  
#FFEF3054TS  
Reg. \$1378

**SAVE \$380**

**BUY THE SET NOW ONLY \$998!**

**GET COOKING - WITH A - POWER PAIR**

**GREAT SAVINGS**  
LG® Microwave and Range!

**SAVE \$62**

**LG**  
Life's Good  
1000-Watt Microwave  
• EasyClean™ Interior  
• Energy Savings Key  
#LMV1764ST  
Reg. \$279  
**NOW ONLY \$227!**

**SAVE BIG NOW**

**30" Slide-In Smart Wi-Fi Enabled Electric Range**  
• 6.3 cu ft. Capacity, EasyClean® + Self Clean Oven  
• InstaView® Window  
• ProBake Convection® with Air Fry #LSEL6335F  
Reg. \$1999  
**RANGE NOW ONLY \$1298!**  
LIMITED TIME

**FRIGIDAIRE**  
13 CU. FT. UPRIGHT FREEZER  
• Power Outage Assurance  
• EvenTemp™ Cooling System  
#FFFU13F2VW  
LIMITED QUANTITIES  
Reg. \$849  
**NOW ONLY \$598!**

**FRIGIDAIRE**  
20 CU. FT. UPRIGHT FREEZER  
• EvenTemp™ Cooling System  
• Door Ajar and High Temp Alarm  
#FFUE2022AW  
LIMITED QUANTITIES  
Reg. \$1099  
**NOW ONLY \$798!**

**FRIGIDAIRE GALLERY**

INTRODUCING THE ONLY RANGE WITH  
**Air Fry**  
RIGHT IN THE OVEN!

This 30" Frigidaire Gallery Rear Control Electric Range is packed with time-saving features like Total Convection. Start baking immediately with No Preheat! Deliver all the flavor and none of the guilt with Air Fry! Plus flexible Five Element Cooktop!  
Reg. \$1399  
**SAVE \$401**  
**NOW ONLY \$998!**

#GCRE3060BF

**BOSCH**  
Invented for life

21.6 CU. FT. FRENCH DOOR BOTTOM MOUNT REFRIGERATOR  
• Filtered ice and Water  
• 2-Tiered Freezer Drawers  
• MultiAirFlow™ Cooling System  
#B36CD50SNS  
See store for details.

**30" BUILT-IN GAS COOK TOP**  
• Heavy-Duty Automatic Electronic Re-ignition  
• 5 Burners  
#NGM8055UC

**30" SINGLE ELECTRIC WALL OVEN**  
• 4.6 cu. ft. Thermal Oven • Bread Proofing  
• Kitchen Timer • Heavy-Duty Metal Knobs  
#HBL5351UC

**Receive up to \$1000 on Bosch Kitchen Packages!**

**INVENTORY CLEARANCE SALE!**  
GOING ON NOW THROUGH JANUARY 31ST



# has **ENDLESS** Kitchen Package options!



## SAVE BIG on CAFÉ 4 Piece Package



**27.8 CU. FT. 4 DOOR FRENCH DOOR REFRIGERATOR**

- Multiflow Air System
- WiFi Connect
- #CVE28DP2NS1

**30" SMART SLIDE IN RANGE**

- Radiant and Convection Range
- WiFi Connect
- #CES750P2MS1

**1.7 CU. FT. OVER-THE-RANGE MICROWAVE**

- Vent Fan
- 950 Watts
- #CVM517P2RS1

**24" BUILT-IN DISHWASHER**

- Ultra Wash & Dry
- Adjustable Upper Rack
- #CDT845P2NS1



## Get the Look!

Rewards curated for you by Café.

Receive up to a **\$3000 rebate\*** with the purchase of select Café appliance suite combinations. January 1 – June 30, 2024



15" Undercounter Nugget Ice Maker UNC15NPR11 • Matte White Door Panel Kit: CK1UP150RW2, Hardware Kit: CXQW1H1PPBZ

## 0% INTEREST FOR 24 MONTHS\*

\*When paid in full on qualifying purchases with select financing companies made now through January 31st, 2024. Interest will be charged to your account from the purchase date if the promotional balance, including optional charges, is not paid in full within 24 months or if you make a late payment. Equal Monthly Payments Required. See back page for details.

## SAVE BIG on Frigidaire's Stainless Steel 4 Piece Package



### FRIGIDAIRE

**25.6 CU. FT. SIDE-BY-SIDE REFRIGERATOR**

- EvenTemp™ Cooling System
- Fresh Storage Crispers
- #FRSS2623AS

**1.8 CU. FT. OVER-THE-RANGE MICROWAVE**

- Cooktop LED Lighting
- Interior LED Lighting
- #FFMV1846VS

**30" ELECTRIC FREESTANDING RANGE**

- Quick Boil
- Store-More™ Drawer
- #FCRE3052AS

**24" BUILT-IN DISHWASHER**

- Heated Drying System
- Fits up to 14 Place Settings
- #FDPC4221AS

## KitchenAid®

CUSTOMIZE YOUR COLLECTION AND UNLOCK REBATES UP TO

# \$3000\*

ON ALL KITCHENAID® MAJOR APPLIANCES VIA A PREPAID MASTERCARD® BY MAIL

January 1–June 30, 2024

### KitchenAid®





**BUY MORE, SAVE MORE!**  
**SAVE UP TO \$1,200!**

with purchase of qualifying appliances.  
See store for details.



January 1, 2024 - May 15, 2024



**PERFECT  
LAUNDRY**  
PEDESTAL OFFER

**GET A FREE  
STORAGE PEDESTAL  
STORAGE DRAWER**

up to \$250 via online rebate  
when you buy LG washer/dryer pair  
and pedestal storage drawer pair!

January 1 - February 20, 2024. See Store for details.



# The **RIGHT** Kitchen Package is **WAITING!**



*First we saved.*  
**THEN, WE SAVORED.**

**SAVE UP TO  
20% WITH**

**★  
ONE - TWO - FREE®**  
SALES EVENT

*The Ultimate* **GIFT  
WITH PURCHASE**

Feed your culinary ambition and save up to \$8,346. Buy an eligible Thermador cooking package and select your complimentary dishwasher. Add refrigeration and choose another gift, including newly added under counter refrigeration. Embrace your opportunity to cook without limits.

*Choose your gift at*  
**THERMADOR.COM/ONE-TWO-FREE**



**WOLF SUB#ZERO COVE**  
**FULL SUITE SAVINGS**



\*All products purchased on the same invoice qualify for Sub-Zero Care Plus (excluding dishwashers, coffee systems, outdoor grills, side burners, and burner modules).\*\*\$1,000 rebate for purchasing a qualifying package, plus an additional \$250 for each product as a qualifying add-on, up to a total maximum rebate of \$2,500. See store for details

Get **3**  
additional years  
of **PROTECTION\***  
for extra peace  
of mind

OR  
QUALIFY  
FOR UP TO **\$2,500  
REBATE\*\***

**NOW OPEN!** Come experience our **NEW Living Kitchen**  
**NOW!** Exclusive to the Upstate!

# Earn up to an Additional **\$500** In-Store Gift Card\*\*

\*\*with qualifying furniture purchase. See store for details.

## GREATEST SELECTION Of Casual & Formal Furniture in the Upstate

OVER 100 RECLINERS TO CHOOSE FROM OF THE BEST BRANDS

MANUAL RECLINERS



**LeatherItaliausa**  
SINCE 1987

**GENEVA**  
Recliner  
NOW ONLY **\$349<sup>95</sup>!**



**Southern Motion**

**PRIMO**  
Recliner  
• Large sitting area in smaller frame  
NOW ONLY **\$449<sup>95</sup>!**



**Southern Motion**

**ESPRIT**  
Leather Rocker Recliner  
NOW ONLY **\$699<sup>95</sup>!**



**FLEXSTEEL HOME**

**KERRIE**  
Glider Recliner  
• Classic comfort in a curved body  
NOW ONLY **\$799<sup>95</sup>!**



**FLEXSTEEL HOME**

**WOODLAWN**  
Swivel Gliding Recliner  
• 250 fabric options  
• Swivels full 360°  
NOW ONLY **\$899<sup>95</sup>!**



**England**

**HELLEN**  
Recliner  
NOW ONLY **\$949<sup>95</sup>!**



**FLEXSTEEL HOME**

**YUKON**  
Rocking Recliner  
• 250 fabric options  
NOW ONLY **\$959<sup>95</sup>!**



**HOOKER FURNITURE**

**STARK**  
Leather Recliner  
• Manual Push Back  
NOW ONLY **\$1299<sup>95</sup>!**



**HOOKER FURNITURE**

**RYLEA**  
Recliner  
• Aspen Hearthstone Leather  
NOW ONLY **\$1649<sup>95</sup>!**

POWER RECLINERS



**Southern Motion**

**FRONT ROW** Power Recliner  
• With Power Headrest  
NOW ONLY **\$799<sup>95</sup>!**



**Southern Motion**

**ALL STAR** Power Recliner  
• Optional SoCozi Heat and air Massage  
NOW ONLY **\$879<sup>95</sup>!**



**hi-rack**

**SAVANNAH** Power Recliner  
All Leather Power Headrest  
NOW ONLY **\$899<sup>95</sup>!**



**Southern Motion**

**JITTERBUG** Power Recliner  
• With Power Headrest  
NOW ONLY **\$1099<sup>95</sup>!**



**Southern Motion**

**MARVEL** WallHugger Power Recliner  
• Power headrest  
**\$1149<sup>95</sup>!**



**FLEXSTEEL HOME**

**DAVIS**  
Rocking Recliner  
NOW ONLY **\$1199<sup>95</sup>!**



**PALLISER**

**TORRINGTON**  
Swivel Power Recliner  
NOW ONLY **\$1499<sup>95</sup>!**



**PALLISER**

**ZERO GRAVITY RECLINER**  
NOW ONLY **\$1569<sup>95</sup>!**

ROCKER RECLINERS/GLIDERS



**Southern Motion**

**FLICKER**  
Recliner  
NOW ONLY **\$399<sup>95</sup>!**

**CLOSEOUT!**



**FLEXSTEEL HOME**

**CHIP**  
Rocker Recliner  
• High-density seat cushion  
NOW ONLY **\$729<sup>95</sup>!**



**FLEXSTEEL HOME**

**MINNIE**  
Swivel Recliner  
• fresh and casual features  
NOW ONLY **\$999<sup>95</sup>!**



**FLEXSTEEL HOME**

**CATALINA**  
Recliner  
• With Power Headrest  
NOW ONLY **\$1099<sup>95</sup>!**



**FLEXSTEEL HOME**

**ARLO**  
Triple Power Rocker Recliner  
• High density seat cushion  
NOW ONLY **\$1329<sup>95</sup>!**



**FLEXSTEEL HOME**

**RIO**  
Fabric Rocker Recliner  
• Power Recliner with Power Headrest  
NOW ONLY **\$1399<sup>95</sup>!**

LIFT CHAIRS



**MEGA MOTION**  
Products for BETTER LIVING

**MEGA MOTION**  
Lift Chair  
• For smaller users  
NOW ONLY **\$799<sup>95</sup>!**



**MEGA MOTION**  
Products for BETTER LIVING

**MEGA MOTION**  
Lift Chair  
• Heat and massage  
NOW ONLY **\$899<sup>95</sup>!**



**HOOKER FURNITURE**

**CARROLL**  
Lift Chair  
• Power headrest and lumbar support  
NOW ONLY **\$1699<sup>95</sup>!**

# FAST SHIPPING ON SPECIAL ORDERS



**LEGENDS**  
FURNITURE

## 4 PIECE SET

Reg. \$2999

**NOW ONLY \$2099<sup>95</sup>!**

Queen Bed, Dresser, Mirror and Night Stand

Linsey's traditional style is blended with an updated rustic, wire brushed finish to create something fresh and new while radiating warmth and relaxation!

**SAVE \$899<sup>05</sup>**



**UNIVERSAL**

EXPLORE HOME™

## 4 PIECE SET

Reg. \$4399

**NOW ONLY \$3488!**

Queen Bed, Dresser, Mirror and Night Stand

**SAVE \$911**

## TRIBECCA BEDROOM SET

- Two bed styles
- Variety of coordinating night stands, dressers, mirrors and chests
- Solid wood with finish of your choice.



Hand made American furniture in Ohio's Amish country. Third generation of furniture craftsmen.

**SAVE UP TO 38% ON MAVIN AMISH FURNITURE!**

# 0% INTEREST FOR 24 MONTHS\*

\*When paid in full on qualifying purchases with select financing companies made now through January 31st, 2024. Interest will be charged to your account from the purchase date if the promotional balance, including optional charges, is not paid in full within 24 months or if you make a late payment. Equal Monthly Payments Required. See back page for details.



**Liberty Furniture**  
INDUSTRIES, INC

## 7 PIECE TRESTLE TABLE SET

Reg. \$2899<sup>95</sup>

**NOW ONLY \$1859<sup>95</sup>!**

Includes trestle table, and six slat back side chairs. Features dark chestnut finish, two 12-inch leaves and an easy glide track system. Grey Linen upholstery seats with nylon chair glides to protect flooring.

**SAVE \$1040**

# INVENTORY CLEARANCE SALE!

GOING ON NOW THROUGH JANUARY 31ST



**SAVE \$875<sup>05</sup>**

Reg. \$5275 **NOW ONLY \$4339<sup>95</sup>!**



**SMITH BROTHERS**  
OF BERNE

Quality Craftsmanship & Quality Lumbar Framing

Each piece is designed to become a treasured part of your home for years to come



AMERICAN MADE CUSTOM UPHOLSTERY



# Earn up to an Additional **\$500** In-Store Gift Card\*\*

\*\*with qualifying furniture purchase. See store for details.

**SLEEPER**



Fusion

**BRITTA GREYSTONE**

Reg. \$1199<sup>95</sup>  
**NOW ONLY \$899<sup>95</sup>!**

**PALLISER**



**VICEROY LEATHER SECTIONAL**

**LEATHER NOW ONLY \$3699!**

**COMFORT meets LUXURY** 



**SAVE UP TO 60%**

**PLUS EARN AN ADDITIONAL \$500 IN-STORE GIFT CARD!**

## HOME THEATER



**ELITE POWER FABRIC 3 PIECE HOME THEATER SEATING**

(Color may vary)  
**NOW ONLY \$1099!** Each Piece

**PALLISER**



**AUDIO DOUBLE POWER FABRIC THEATER SEATING**

(Color may vary)  
**NOW ONLY \$1379<sup>95</sup>!** Each Piece

**PALLISER**

## 0% INTEREST FOR 24 MONTHS\*

\*When paid in full on qualifying purchases with select financing companies made now through January 31st, 2024. Interest will be charged to your account from the purchase date if the promotional balance, including optional charges, is not paid in full within 24 months or if you make a late payment. Equal Monthly Payments Required. See back page for details.



**UNIVERSAL**  
EXPLORE HOME™



**STANLEY**  
Contemporary Sofa

Fusion

**SAVE \$137<sup>05</sup>**

Reg. \$687  
**NOW ONLY \$549<sup>95</sup>!**

**IN STOCK!**



**ANGIE**  
Sofa

England

**SAVE \$200**

Reg. \$999<sup>95</sup>  
**NOW ONLY \$799<sup>95</sup>!**

**SMITH BROTHERS**  
of BERNE

Quality Craftsmanship & Quality Lumbar Framing

Each piece is designed to become a treasured part of your home for years to come

 **AMERICAN MADE CUSTOM UPHOLSTERY**



**CRAFTMASTER**  
Sofa

Reg. \$1189<sup>95</sup>  
**NOW ONLY \$949<sup>95</sup>!**

**SAVE \$240**



**EVERLEIGH**  
2-piece Sectional Sofa

Reg. \$1499  
**NOW ONLY \$999<sup>95</sup>!**

**SAVE \$499<sup>05</sup>**



**REED**  
Sofa

England

**SAVE \$300**

Reg. \$1379<sup>95</sup>  
**NOW ONLY \$1079<sup>95</sup>!**

**CLOSEOUT!**



**PALLISER BORREGO**  
Leather Sofa

Reg. \$1799<sup>95</sup>  
**NOW ONLY \$1199<sup>95</sup>!**

**SAVE \$600**



**CRAFTMASTER**

**KAIS-41**  
Sofa

Reg. \$1729  
**NOW ONLY \$1347!**

**QUICK SHIP!**

**SAVE \$382**



**LeatherItalia**

**NEWPORT**  
Sofa

Reg. \$2477  
**NOW ONLY \$1749!**

**SAVE \$728**



**UNIVERSAL**

**SALINA**  
Sofa

Reg. \$3000  
**NOW ONLY \$2495!**

**SAVE \$505**

Allow Our Designers to **CUSTOM DESIGN** the Fabrics that are **PERFECT FOR YOU!**

# FAST SHIPPING ON SPECIAL ORDERS

Earn up to an **\$500** In-Store Gift Card\*\*

\*\*with qualifying furniture purchase. See store for details.



**PLYMOUTH 7 PIECE DINING SET**  
Includes round to oval table, 4 side chairs and 2 arm chairs.

Reg. \$2897  
**NOW ONLY \$2179!**



**LIBERTY ANGLEWOOD 5 PIECE PEDESTAL TABLE SET**

Feel comfortable and elegant at the same time. Includes pedestal table and four slat back upholstered side chairs.

Reg. \$1299  
**NOW ONLY \$749.95!**



## INVENTORY CLEARANCE SALE! GOING ON NOW THROUGH JANUARY 31ST

POWER



**HENRY Reclining Sofa**  
Triple Power - Zero Gravity

**NOW ONLY \$2699.95!**



**PALLISER**

**Each piece is unique and made to order!**



**WILD CARD Reclining Sofa**

**NOW ONLY \$899.95!**



**CLIVE**  
Leather, Power Headrest & Lumbar, Extended Footrest

**NOW ONLY \$1699.95!**



**ROYCE**  
Leather Power Reclining Sofa with USB Charging Port



**NOW ONLY \$1399.95!**



**WHITNEY**  
Power with Headrest Leather

**NOW ONLY \$1799.95!**



**POINT BREAK**  
Triple Power, Leather

**NOW ONLY \$2099.95!**



**MARVEL**  
Power Reclining Leather Sofa

**NOW ONLY \$2149.95!**



**RYLAN Reclining Sofa**  
with Power Headrest

**NOW ONLY \$2699.95!**

**HEKMAN**



**ACCENT TABLE**

**NOW ONLY \$149.95!**



**SAVE up to 40%**

on Gorgeous  
**Bradington Young**  
Top Quality Furniture

**BRADINGTON YOUNG**  
a division of HOOKER FURNITURE

# HUGE SAVINGS ON ALL OUTDOOR FAMILY FUN!

ALL GRILLING ACCESSORIES  
**ON SALE!**



NOW ONLY  
**\$449**

**SPIRIT II E210 2 BURNER  
LIQUID PROPANE GRILL**

★ ★ MADE IN AMERICA ★ ★

AND REFINED FOR MORE THAN A CENTURY



NOW ONLY  
**\$998**



**GENESIS S-325S**



**evo**

# 10-0002-LP

**PROFESSIONAL WHEELED  
CART WITH SEASONED  
COOK SURFACE**

Grill, sear, toast, stir fry, sauté, steam,  
roast, smoke and bake!

**BIG GREEN EGG®** NOW AVAILABLE  
AT JEFF LYNCH!



**FREE BAG OF BIG GREEN EGG CHARCOAL  
WITH BIG GREEN EGG PURCHASE!**



**TRAEGER PRO  
SERIES 575 WOOD  
PELLET  
GRILL**

NOW ONLY  
**\$799<sup>95</sup>**



**TRAEGER  
IRONWOOD  
650 WOOD  
PELLET  
GRILL**

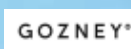
NOW ONLY  
**\$1299<sup>95</sup>**



**TRAEGER TIMBERLINE XL  
WOOD PELLET GRILL**

NOW ONLY  
**\$3799<sup>99</sup>**

After \$100 Instant  
Rebate



**GOZNEY®  
DOME  
OUTDOOR  
PIZZA  
OVEN**

NOW ONLY  
**\$1999**

STAND SOLD  
SEPARATELY



Roast, smoke,  
bake, and  
steam! Plus  
Pizza in 60  
seconds!

**PLANK & HIDE CO.™**



**Adeline  
Sofa** NOW ONLY  
**\$1099!**

**Adeline  
Coffee Table** NOW ONLY  
**\$399!**

**Adeline  
End Table** NOW ONLY  
**\$239!**

**BEAUTIFUL OUTDOOR FURNITURE  
THAT IS BUILT TO LAST!**



**LANE VENTURE**

**Coastal Living  
Outdoor Collection  
Laconia Sofa**



**UNIVERSAL**



**LANE VENTURE**

**Colson Sectional**

- Performance with Comfort
- Plush Seating
- WeatherMaster Ultimate Outdoor Cushion
- Choice of Fabrics
- Made in the USA

**SoPoly**

**St. Simons Curved  
Back Adirondack Chair  
NOW ONLY \$399<sup>99</sup>**

**SAVE  
\$79**



- Eco Friendly
- Fade Resistant
- Low Maintenance
- 20 Year Warranty
- Made in the USA



# Luxurious Simplicity, Beauty, and Elegance.

## LONGMEADOW BEDROOM SET

Impressively sized paneled headboard and a footboard that includes drawer storage. Constructed of solid wood in a finish of your choice.

- Matching Nightstand, Dresser, Mirror and Chest of Drawers
- Environmentally Friendly



Hand made American furniture in Ohio's Amish country. Third generation of furniture craftsmen.

SAVE UP TO **38%** ON MAVIN AMISH FURNITURE!



## TRIBECA BEDROOM

The Tribeca group sets the perfect stage for relaxed, refined comfort. Our panel bed would be well suited for its namesake, a neighborhood in Manhattan.



## CHARLESTON BEDROOM

The perfect mix of charm and elegance with Arched Panel beds and Louver Panel beds. Available in many different wood types and finishes to ensure that each piece is made to fit your life and your space.



## RIALTO DINING CHAIRS

Comfort and beauty combine in these well designed Rialto dining room chairs finished in the stain of your choice.



## BRINKLEY DINING CHAIRS

You will want to pull up a seat and stay awhile in these comfortably designed Brinkley dining room chairs finished in the stain of your choice.



## VENICE DINING CHAIRS

Our warm Asbury finish adds a golden glow to the timeless Venice chair. This stately chair brings the perfect balance to any dining room.



## GRACE DINING CHAIRS

Gently curved back, nail head trim and square tapered legs. The highly versatile Grace Chair speaks to many decor styles. Dependent upon fabric and stain, it can easily go from modern rustic to contemporary chic.



All chairs: Custom built as Stationary 24" or 30" Bar Stools, Swivel 24" or 30" Bar Stools, Backless Stationary or Swivel Bar Stools, Benches with Arms, Side Benches (without Arms), and Backless Benches.

## Largest selection of **LIFT CHAIRS** in Greenville.

Available for immediate delivery.

HUGE SELECTION OF POWER CONTROLLED LIFT CHAIRS NOW ON SALE STARTING AT **\$799<sup>95</sup>!**



GOOD



Products for BETTER LIVING

Regular price \$949  
**NOW ONLY \$799**  
SAVE \$250

Model 4001

- 3 position power recliner
- Whisper quiet
- USB port in hand wand
- Up to 300 lb weight capacity
- 100% polyester fabric
- Easy to reach side pockets on both sides
- Integrated emergency battery back up
- Won't interfere with pacemakers, hearing aids or insulin pumps



BETTER



Products for BETTER LIVING

Regular price \$1,199  
**NOW ONLY \$989**  
SAVE \$300

Model 3601

- Deluxe heat and massage
- Side pockets
- Lithium standard emergency battery back up
- Lay flat position
- Up to 325 lb weight capacity
- All FDA tested
- Won't interfere with pacemakers, hearing aids or insulin pumps
- Best lift chair in the industry



MODEL MM101-NAF-A11  
Lift Chair

**NOW ONLY \$1079<sup>95</sup>!**



Products for BETTER LIVING

- Emergency battery backup
- Infinite position
- USB port
- Heavy duty steel mechanism



MODEL MM3730  
Lift Chair

**NOW ONLY \$1299<sup>95</sup>!**



Products for BETTER LIVING

- Power lumbar and power headrest



HOOKER FURNITURE

- Dual Motor
- Power Lumbar
- Top Grain Leather

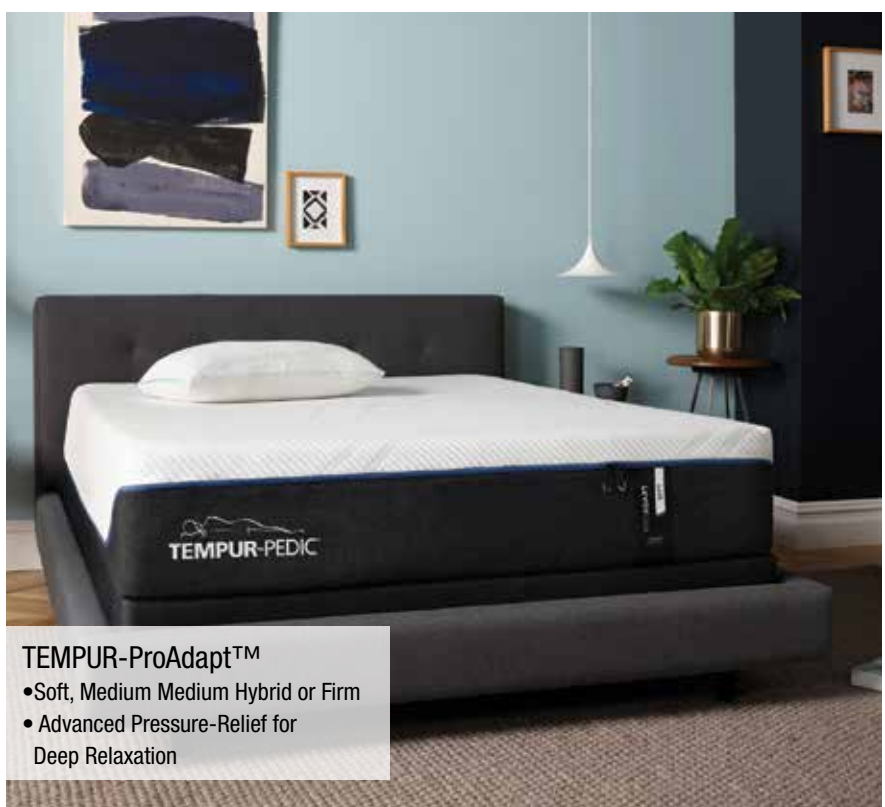
**NOW ONLY \$1699<sup>95</sup>!**



TEMPUR-PEDIC®

UP TO  
**\$300 BONUS**  
**JEFF LYNCH**  
**IN-STORE GIFT CARD!**  
 with purchase of  
 select Tempur-Pedic  
 models

**AMERICA'S CELEBRATION** TEMPUR-PEDIC®



**TEMPUR-ProAdapt™**  
 • Soft, Medium Medium Hybrid or Firm  
 • Advanced Pressure-Relief for Deep Relaxation



**TEMPUR-LuxeAdapt™**  
 • Soft or Firm  
 • Featuring TEMPUR-APR material

**0% INTEREST FOR 24 MONTHS\***  
\*When paid in full on qualifying purchases with select financing companies made now through January 31st, 2024. Interest will be charged to your account from the purchase date if the promotional balance, including optional charges, is not paid in full within 24 months or if you make a late payment. Equal Monthly Payments Required. See back page for details.



TEMPUR-PEDIC®

**LUXE breeze®**  
**4-Level Cooling System**

- SMARTCLIMATE® MAX DUAL COVER SYSTEM**  
 An enhanced zip-off cover with double the cool-to-touch power so you feel cooler when you lie down.
- PURECOOL+™ PHASE CHANGE MATERIAL**  
 Exclusive, next-generation technology absorbs heat so you feel cooler while you fall asleep.
- TEMPUR-CM+™ MATERIAL**  
 Advanced TEMPUR Material redesigned with maximum airflow for all-night cooling and comfort.
- VENTILATED TEMPUR-APR™ MATERIAL**  
 Our most pressure-relieving material ever—now with an all-new, ultra-breathable design.

**L** **JEFF LYNCH** **YOUR BEST CHOICE FOR 72 years**  
 Appliances ■ Electronics ■ Bedding ■ Furniture  
 ALWAYS THE LOWEST PRICE **GUARANTEED** PERIOD. [www.jefflynch.com](http://www.jefflynch.com)

17 Roper Mountain Rd. • Greenville, SC 29607 • (864) 268-3101  
 HOURS: Monday-Friday 9am-6pm • Saturday 9am-5pm • Sunday Home With Family!

# SAVE UP TO 50% ON THE BEST BEDDING IN AMERICA NOW!




PLUS UP TO

**\$200 BONUS**

**JEFF LYNCH**

**IN-STORE GIFT CARD!**

with purchase of select Sealy models

**SAVE \$100**

CROWN JEWEL COLLECTION  
**FIRST AND PARK**  
Firm Queen Mattress

**NOW ONLY \$199** Reg. \$299

**SAVE \$322**

CROWN JEWEL COLLECTION  
**SECOND AND PARK**  
Firm Tight Top Queen Mattress

**NOW ONLY \$377** Reg. \$699




**SAVE \$400**

CROWN JEWEL COLLECTION  
**FOURTH AND PARK**  
Deluxe Euro-Pillow Top Queen Mattress

**NOW ONLY \$699** Reg. \$1099

**SAVE \$250**

**HYBRID LACEY**  
Queen Mattress

**NOW ONLY \$1199** Reg. \$1449

## 0% INTEREST FOR 24 MONTHS\*

\*When paid in full on qualifying purchases with select financing companies made now through January 31st, 2024. Interest will be charged to your account from the purchase date if the promotional balance, including optional charges, is not paid in full within 24 months or if you make a late payment. Equal Monthly Payments Required. See back page for details.

**STEARNS & FOSTER®**

**STUDIO COLLECTION**

**MEDIUM FEEL**

**QUEEN MATTRESS**

Premium Memory Foam Comfort Layers adapt to support your body for comfort and pressure relief!

**SAVE \$800**

**NOW ONLY \$1799** Reg. \$2599



UP TO

**\$300 BONUS**

**JEFF LYNCH**

**IN-STORE GIFT CARD!**

with purchase of select Stearns & Foster models



**STEARNS & FOSTER®**

**ESTATE COLLECTION**

**YOUR CHOICE OF SOFT, FIRM OR ULTRA FIRM QUEEN MATTRESS**

The perfect balance of comfort & support takes pressure relief to the next level.

**SAVE \$600**

**NOW ONLY \$2399** Reg. \$2999

L

JEFF LYNCH

Appliances ■ Electronics ■ Bedding ■ Furniture

ALWAYS THE LOWEST PRICE

GUARANTEED

PERIOD.

YOUR BEST CHOICE FOR

**72** years

[www.jefflynch.com](http://www.jefflynch.com)

17 Roper Mountain Rd. • Greenville, SC 29607 • (864) 268-3101  
HOURS: Monday-Friday 9am-6pm • Saturday 9am-5pm • Sunday Home With Family!

\*No down payment, no interest for 24 months applies to the following qualifying purchases. Custom furniture orders require a 25% deposit. Kitchen packages \$3,500 & up, Furniture Packages \$3,500 & up, High Definition TV's and Electronics \$1,700 & up, Bedding sets \$1,800 & up. No down payment, no interest for 60 months applies to qualifying purchases of Tempur-Pedic, Sealy, and Stearns & Foster of \$2999 or more. Lower priced sales may qualify for other 0% Interest Financing programs. All Financing Programs are subject to credit approval. Equal monthly payments required. If original balance is paid in full by the due date, then no interest is charged. Current APR is as low as 28.99% and will vary by plan and financing partner. Other plans require minimum payment of 6% of remaining balance. Rate is subject to change without notice. See store for full details. Offers and prices valid now through January 31st, 2024, manufacturer promotional rebates/ offers may end prior to the end of the sale. The merchandise in this circular was selected far in advance of printing. If an item is out of stock, we will order the same or comparable model for you. We appreciate your understanding and your business. Any typographic, photographic, or production errors are subject to correction in pricing and description. All models shown may not be on display in our store but are available from our warehouse stock. Jeff Lynch Appliance & TV Center's Retail Store Price Guarantee: We guarantee the Best Price, up front, the first time we meet. If another local retailer (up to 75 miles away) were to advertise a lower price within 30-days, on the same in-stock brand and model, after verification, we will gladly beat that price. This guarantee does not apply to any competitors' website pricing, offers including financing, packages/bundling of items, free or bonus offers, pricing errors, installation or rebate offers. It is also not applicable to closeouts, one of a kind, limited quantity, out of stock, open box or refurbished items. \*\*Receive In-Store Gift Card up to \$500 (max value) on qualifying purchases. Limit 1 - \$500. Gift Card per Household of Total purchases within 90 days. Gift Card's Total Value must be redeemed within 6 months, on a new purchase in a different category. †See store for details.