



AC1900 Wireless Dual Band Gigabit Router

Raise the Bar for Wi-Fi Speed
and Coverage

Archer C9



600Mbps + 1300Mbps
Dual Band Wi-Fi



Beamforming



Gigabit
Ports



USB 3.0
Port



1GHz Dual-
Core CPU

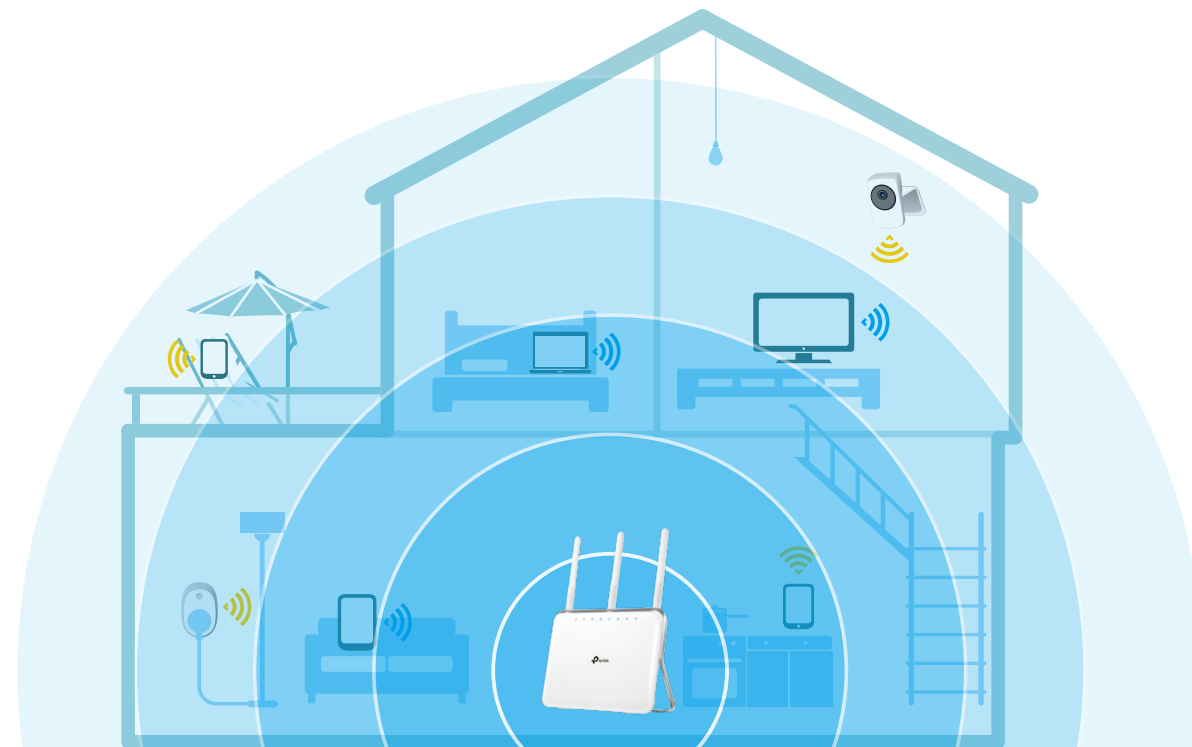
Highlights

Upgrade Your Home Entertainment with AC1900 Dual Band

Equipped with the next generation 11ac Wi-Fi standard, Wireless AC creates up to 1.9Gbps of combined speed to your home network. The dual 2.4GHz and 5GHz bands allow for more devices to be connected to your home network at once without interruptions.

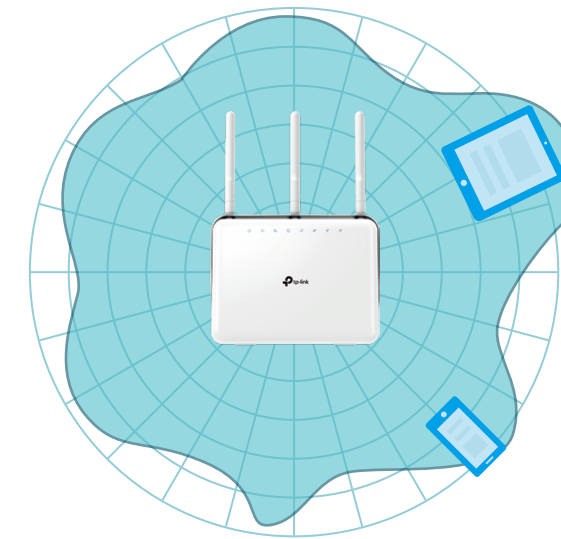
 2.4GHz 600Mbps

 5GHz 1300Mbps

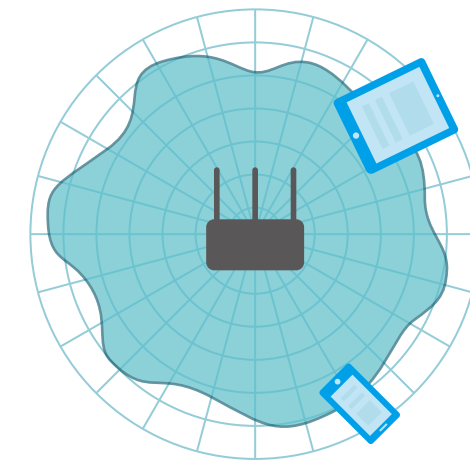


Beamforming for Better Coverage

Beamforming technology dramatically improves the router's coverage by locating wireless devices to form stronger, more reliable connections, even as mobile devices move from room to room.



Archer C9

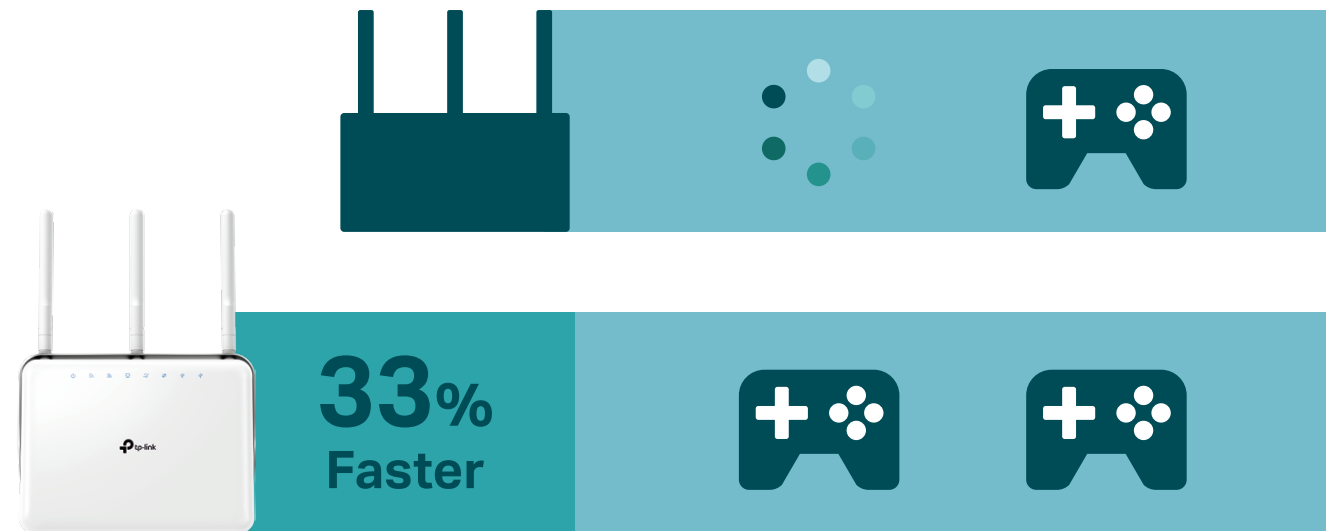


Regular Router

Highlights

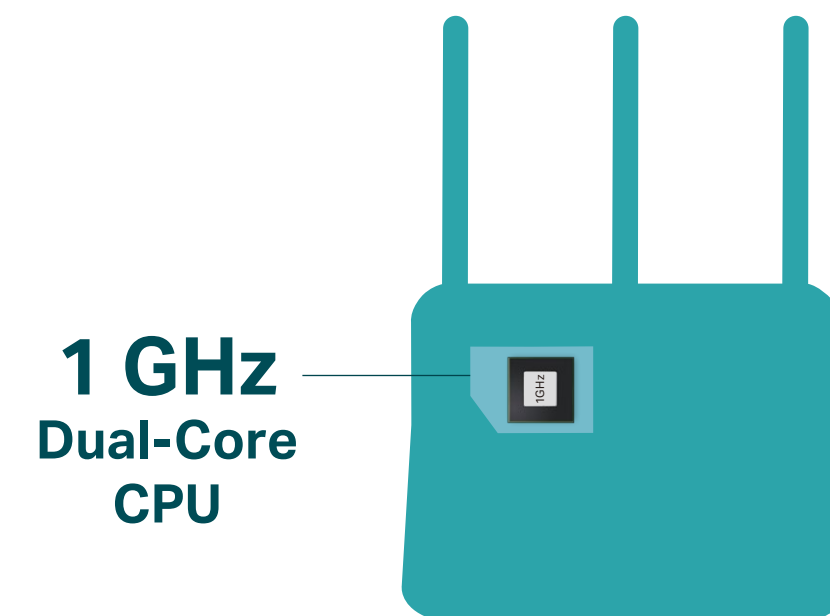
TurboQAM™ (256QAM) Technology

Boosts your wireless network speed by up to 33% when compared to standard single-stream routers for excellent performance over 2.4GHz.



1GHz Dual-Core CPU

Superior processing ability keeps connections, data transfers and storage tasks fast and stable for all your connected devices.

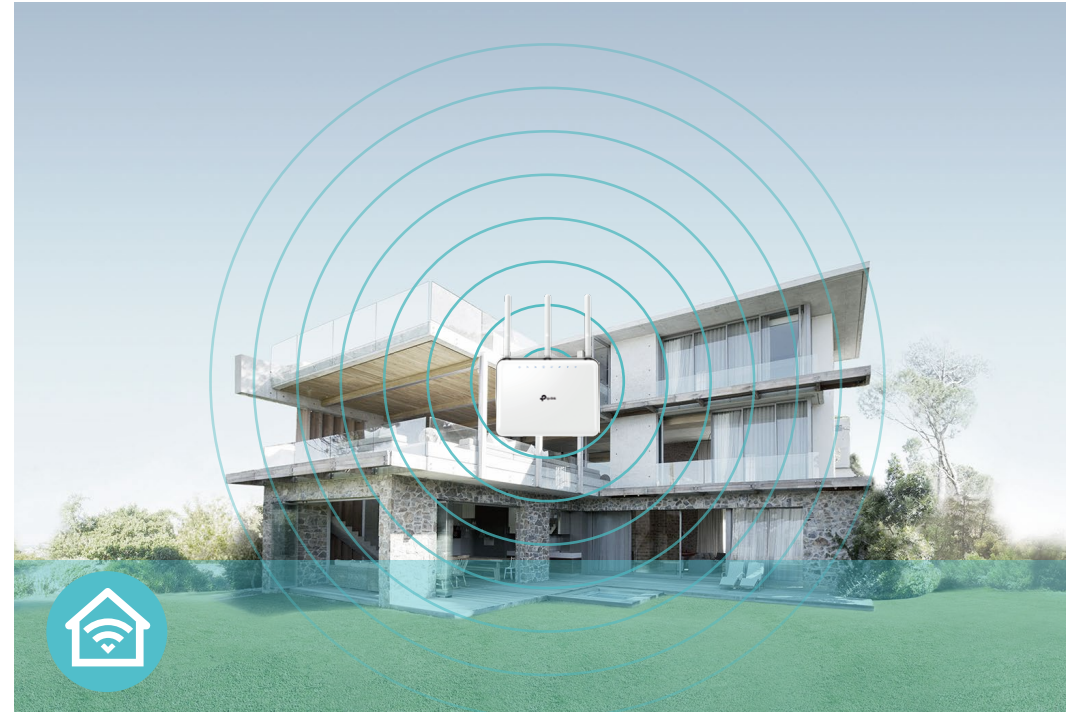


Features



Speed

- **Ultimate Wireless Speed** – Combined wireless speeds up to 600 (over 2.4GHz) and 1300 (over 5GHz) Mbps
- **TurboQAMTM Technology** – Uses TurboQAMTM (256QAM) Technology modulation scheme for higher data throughput, boosting wireless speeds up to 33%
- **Support 802.11 ac** – Provides a data transfer rate 3 times faster than 802.11n for each stream
- **Dual-core CPU** – 1GHz dual-core CPU and 2 co-processors make multi-tasking easy and boost data transfer rate



Wi-Fi Range

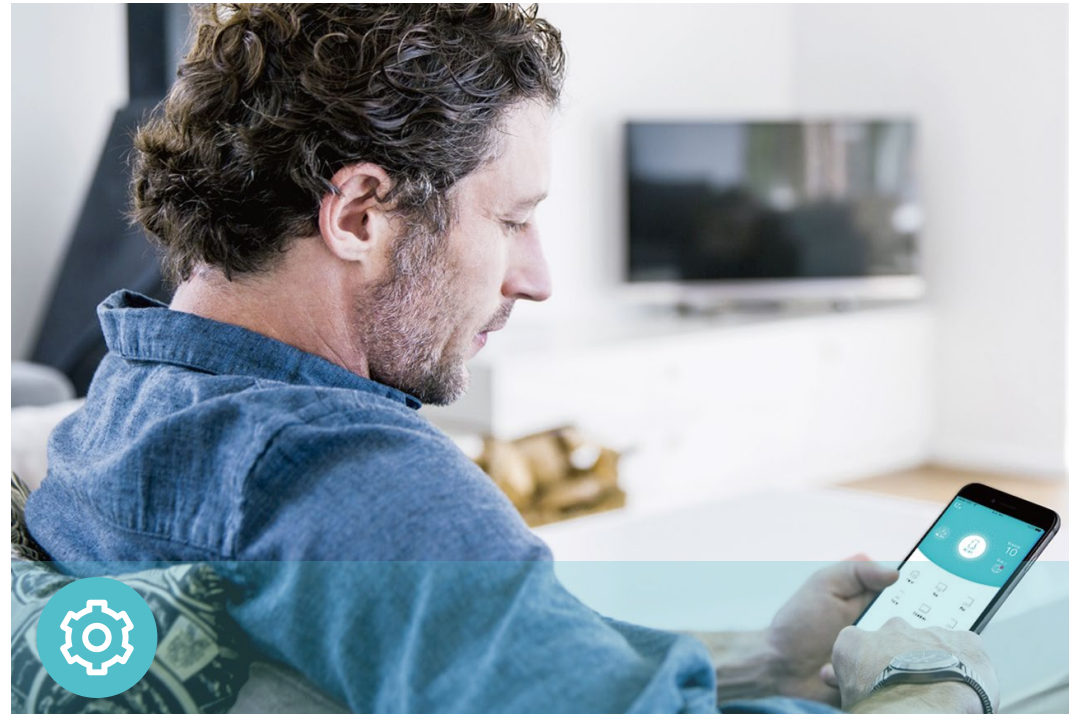
- **Ultimate Range Wi-Fi** – 3 dual band high-performance antennas with a high-powered amplifier ensure the widespread Wi-Fi coverage and a stable connection
- **Wi-Fi with Beamforming** – Beamforming technology locates the connected devices and further improves Archer C9's range and the signal strength to each mobile device, delivering a more reliable and efficient wireless connection



Reliability

- **Simultaneous Dual Band** – Separate Wi-Fi bands enable more devices to connect to your network without a drop in performance
- **Easy Bandwidth Management** – Advanced QoS makes it easier for you to manage the bandwidth of connected devices

Features



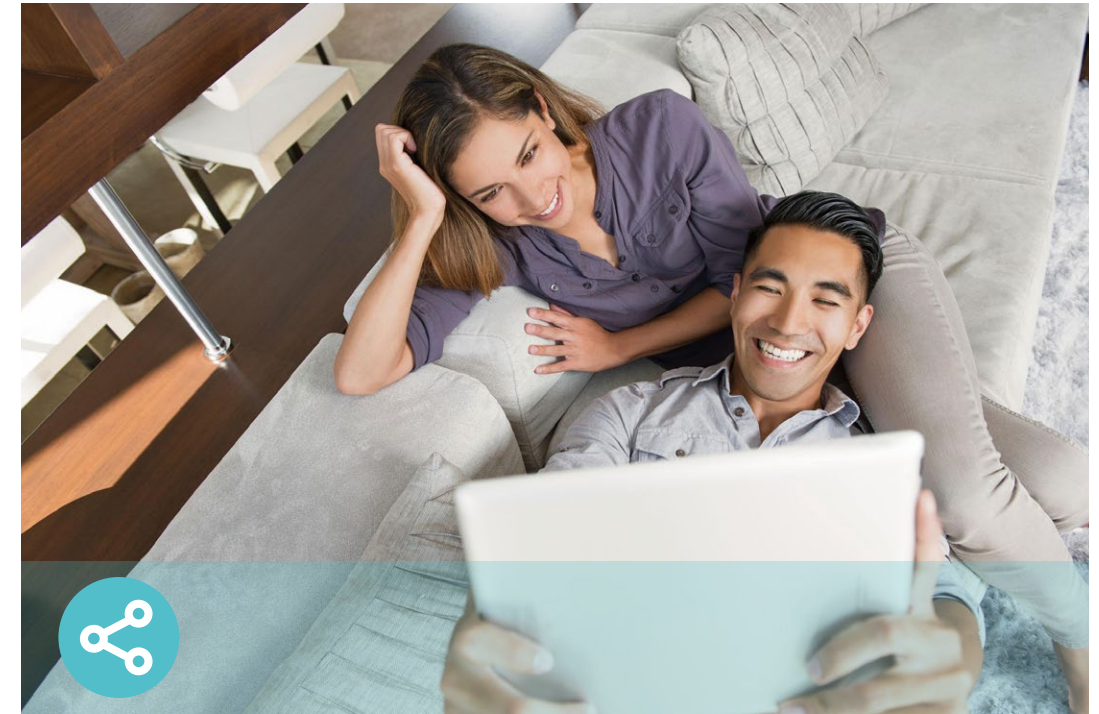
Ease of Use

- Intuitive Web UI – Ensures quick and simple Installation without hassle
- Fast Encryption – One-touch WPA wireless security encryption with the WPS button
- Wi-Fi On/Off – Turn on/off wireless radio as needed using the WiFi On/Off button
- Power On/Off – Conveniently power on or off your router as required
- Hassle-free Management with Tether App – Network management is made easy with the TP-Link Tether App, available on any Android and iOS device



Security

- Guest Network – Keeps your main network secure by creating a separate network for friends and visitors
- Access Control – Establishes a whitelist or blacklist to allow or restrict certain devices to access the internet
- Parental Controls – Restricts internet access time and contents for children devices
- VPN Server – PPTP VPN and OpenVPN are supported, making it easy to set up a secure connection between your private network and the Internet
- Encryptions for Secure Network – WPA-PSK and WPA2-PSK encryptions provide active protection against security threats



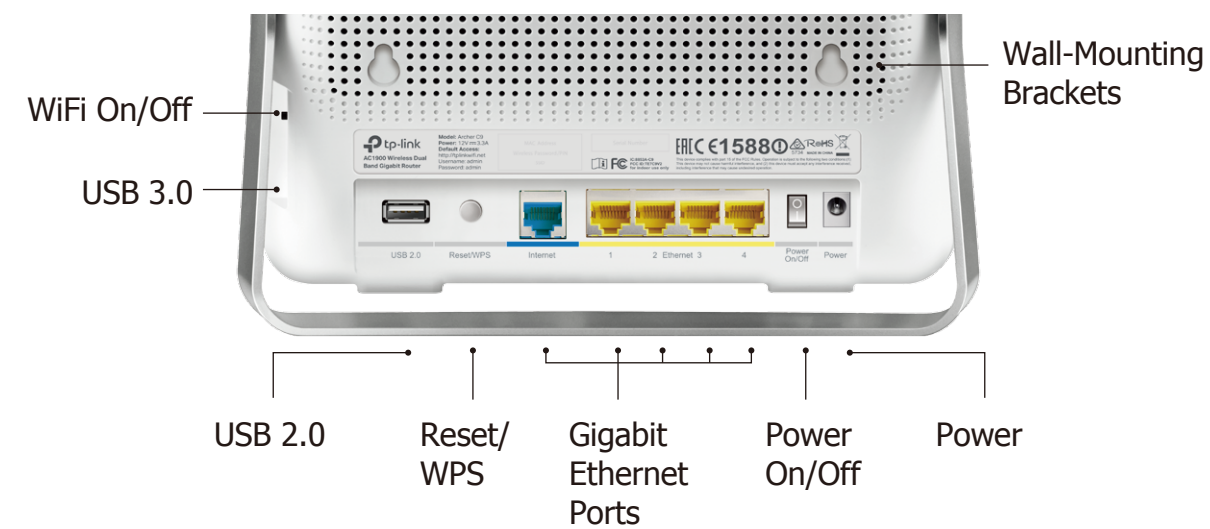
Easy Sharing

- Dual USB Ports for Fast Sharing – With one ultra-fast USB 3.0 port and one USB 2.0 port, you can access and share a printer as well as your files and media locally. Through the router's FTP server, you can also access your files and media from network devices remotely
- 10x Faster Transfer Speed – The USB 3.0 port provides up to 10x faster USB hard drive access than previous generation USB 2.0 connections
- Built-in Print Server – Allows wireless printing from multiple computers (works in conjunction with a USB printer)
- Built-in Media Server – Allows you to play music, watch videos and view photos from any device on your network
- Built-in Time Machine - Regularly backs up all the files on your Macbook to a USB storage device connected to the router

Specifications

Hardware

- Ethernet Ports: 4 10/100/1000Mbps LAN Ports, 1 10/100/1000Mbps WAN Port
- USB Ports: 1 USB 3.0 Port, 1 USB 2.0 Port
- Buttons: WiFi On/Off Button, Power On/Off Button, Reset/WPS Button
- Antennas: 3 Dual Band Antennas
- External Power Supply: 12VDC/2A (EU version), 12VDC/3.3A (US version)
- Dimensions (W x D x H): 8.7 X 3.4 X 6.6 in. (221 X 86 X 168.5mm)



Wireless

- Wireless Standards: IEEE 802.11ac/n/a 5GHz, IEEE 802.11b/g/n 2.4GHz
- Frequency: 2.4GHz and 5GHz
- Signal Rate: 1300Mbps at 5GHz, 600Mbps at 2.4GHz
- Transmit Power:
 - CE: <20dBm(2.4GHz), <23dBm(5GHz)
 - FCC: <30dBm(2.4GHz & 5GHz)
- Reception Sensitivity:
 - 5GHz:
 - 11a 54Mbps: -76dBm, 11n HT20 MCS7: -73dBm
 - 11n HT40 MCS7: -70dBm, 11ac VHT20 MCS8: -69dBm
 - 11ac VHT40 MCS9: -64dBm, 11ac VHT80 MCS9: -61dBm
 - 2.4GHz:
 - 11b 11Mbps: -92dBm, 11g 54Mbps: -77dBm
 - 11n HT20 MCS7: -75dBm, 11n HT40 MCS7: -72dBm
 - 11ac VHT20 MCS8: -70dBm, 11ac VHT40 MCS9: -66dBm
- Wireless Function: Enable/Disable Wireless Radio, WDS Bridge, WMM, Wireless Statistics
- Wireless Security: 64/128-bit WEP, WPA/WPA2, WPA-PSK/WPA-PSK2 encryptions, QSS

Specifications

Software

- Quality of Service: WMM, Bandwidth Control
- WAN Type: Dynamic IP, Static IP, PPPoE, PPTP(Dual Access), L2TP(Dual Access), Bigpond
- Management: Access Control, Local Management, Remote Management
- DHCP: Server, DHCP Client List, Address Reservation
- Port Forwarding: Virtual Server, Port Triggering, UPnP, DMZ
- Dynamic DNS: DynDns, NO-IP, TP-Link
- VPN Server: PPTP, Open VPN
- Access Control: Parental Control, Local Management Control, Blacklist, Whitelist
- Firewall Security: DoS, SPI Firewall, IP and MAC Address Binding
- Protocols: IPv4, IPv6
- USB Sharing: Supports Samba(Storage), FTP Server, Media Server, Printer Server
- Guest Network: 2.4GHz guest network x 1, 5GHz guest network x 1

Others

- Certification:
CE, FCC, RoHS
- System Requirements:
Microsoft Windows 98SE/NT/2000/XP/Vista™/7/8/8.1/10, MAC OS, NetWare, UNIX or Linux
Internet Explorer 11, Firefox 12.0, Chrome 20.0, Safari 4.0, or other Java-enabled browser
Cable or DSL Modem
Subscription with an internet service provider (for internet access)
- Environment:
Operating Temperature: 0°C~40°C (32°F ~104°F)
Storage Temperature: -40°C~70°C (-40°F ~158°F)
Operating Humidity: 10%~90% non-condensing
Storage Humidity: 5%~90% non-condensing
- Package Contents
AC1900 Wireless Dual Band Gigabit Router Archer C9
Power Adapter
RJ45 Ethernet Cable
Quick Installation Guide



For more information, please visit

<http://www.tp-link.com/en/products/details/Archer-C9.html>

or scan the QR code left

Attention: This device may only be used indoors in all EU member states and EFTA countries.

Specifications are subject to change without notice. TP-Link is a registered trademark of TP-Link Technologies Co., Ltd. Other brands and product names are trademarks or registered trademarks of their respective holders. Copyright ©2016 TP-Link Technologies Co., Ltd. All rights reserved.

TP-Link Technologies Co., Ltd.

Building 24 (floors 1, 3, 4, 5) and 28 (floors 1-4) Central Science and Technology Park, Shennan Rd, Nanshan, Shenzhen, China

www.tp-link.com

www.tp-link.com

TP-Link AC1900 Wireless Dual Band Gigabit Router Archer C9