



| FASCO MODEL                  | TYPE | DIA. | HP   | VOLTS | RPM  | SPD. | AMPS | ROT. | BRING. | CROSS REF.                | FIG. | NOTES |
|------------------------------|------|------|------|-------|------|------|------|------|--------|---------------------------|------|-------|
| <b>AMERICAN WATER HEATER</b> |      |      |      |       |      |      |      |      |        |                           |      |       |
| <b>W1</b>                    | SP   | 3.3  | 1/25 | 115   | 3210 | 1    | 1.9  | CW   | SLV    | 7021-10060, 3000288       | A    |       |
| <b>AO SMITH</b>              |      |      |      |       |      |      |      |      |        |                           |      |       |
| <b>W2</b>                    | SP   | 3.3  | 1/14 | 115   | 3275 | 1    | 2.3  | CW   | BALL   | 7021-10770, 183505-000    | B    |       |
| <b>W4</b>                    | SP   | 3.3  | 1/20 | 115   | 3300 | 1    | 1.8  | CCW  | SLV    | 7021-10910, 183381-000    | C    |       |
| <b>BRADFORD WHITE</b>        |      |      |      |       |      |      |      |      |        |                           |      |       |
| <b>W3</b>                    | SP   | 3.3  | 1/17 | 115   | 3000 | 1    | 1.8  | CCW  | SLV    | 117524-00, 239-39785-00   | D    |       |
| <b>W5</b>                    | SP   | 3.3  | 1/14 | 115   | 3275 | 1    | 2.5  | CW   | BALL   | 7021-10712, 239-42133-00B | E    |       |
| <b>W6</b>                    | SP   | 3.3  | 1/15 | 115   | 3000 | 1    | 2.2  | CCW  | SLV    | 7021-9764, 239-4061 4-00C | F    |       |
| <b>GSW</b>                   |      |      |      |       |      |      |      |      |        |                           |      |       |
| <b>W7</b>                    | SP   | 3.3  | 1/25 | 115   | 3200 | 1    | 1.3  | CW   | SLV    | 7021-8347, 63217          | G    |       |
| <b>W8</b>                    | SP   | 3.3  | 1/25 | 115   | 3200 | 1    | 1.3  | CW   | SLV    | 7021-9756, 63172          | H    |       |
| <b>STATE IND.</b>            |      |      |      |       |      |      |      |      |        |                           |      |       |
| <b>W9</b>                    | SP   | 3.3  | 1/60 | 115   | 3000 | 1    | 0.95 | CW   | SLV    | 7021-10548, 0012400500    | I    |       |
| <b>W10</b>                   | SP   | 3.3  | 1/20 | 115   | 3400 | 1    | 1.8  | CCW  | SLV    | 7021-11086, 0012400540    | J    |       |



FIG. A W1



FIG. B W2



FIG. C W4



FIG. D W3



FIG. E W5



FIG. F W6



FIG. G W7



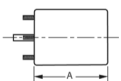
FIG. H W8



FIG. I W9



FIG. J W10



*Thermally protected • UL recognized • CSA or ULc certified*  
**NOTE:** Rotation is determined by looking at shaft end. Shaft length is measured from motor face.



| FASCO MODEL                | TYPE | DIA. | HP                 | VOLTS   | RPM  | SPD. | AMPS     | ROT.      | BRNG. | SHAFT DIM.  | "A" DIM. | CROSS REF.  | FIG. | NOTES |
|----------------------------|------|------|--------------------|---------|------|------|----------|-----------|-------|-------------|----------|---|------|-------|
| <b>AIR AMERICA CORP.</b>   |      |      |                    |         |      |      |          |           |       |             |          |   |      |       |
| ▶ D1028                    | SP   | 5    | 1/8                | 115     | 1050 | 1    | 3.3      | CW        | BALL  | 1/2 X 2 1/2 | 3 1/2    | A0510B2008  | A    |       |
| <b>AIR PLUS</b>            |      |      |                    |         |      |      |          |           |       |             |          |   |      |       |
| A087                       | PSC  | 3.3  | 1/6                | 115/230 | 2400 | 1    | 2.8/1.1  | CCW       | SLV   |             |          | 7062-4687   | B    | 195   |
| <b>ALADDIN STEEL</b>       |      |      |                    |         |      |      |          |           |       |             |          |   |      |       |
| A120                       | SP   | -    | 1/40               | 120     | 3000 | 2    | 1.1      | CW<br>OLE | BALL  |             |          | 230-1460, 7002-2983                                       | C    |       |
| <b>AMANA</b>               |      |      |                    |         |      |      |          |           |       |             |          |   |      |       |
| D1062                      | PSC  | 5    | 1/20 - 1/30 - 1/40 | 265     | 1100 | 3    | .4-.3-.2 | CW        | SLV   | 1/2 X 3 1/2 | 3 3/4    | Amana C-6397902<br>Emerson K48HXCNB-1458<br>5KCP29FK5258S | D    | 1     |
| D1056                      | PSC  | 5    | 1/20 - 1/30 - 1/40 | 208-230 | 1100 | 3    | .4-.3-.2 | CW        | SLV   | 1/2 X 3     | 3 5/8    | Amana 900 Unit C61147-5<br>5KCP29FK886S                   | E    | 1, 18 |
| D1058                      | PSC  | 5    | 1/20 - 1/30 - 1/40 | 265     | 1100 | 3    | .5-.3-.2 | CW        | SLV   | 1/2 X 2 1/2 | 3 5/8    | 5KCP29FK885S<br>Amana C-61147-6                           | F    |       |
| A129                       | SP   | 3.3  | 1/20               | 115     | 3250 | 1    | 1.95     | CW        | SLV   |             |          | Amana, 7021-9064<br>7021-9259                             | G    |       |
| A158                       | PSC  | 3.3  | 1/25               | 115     | 1550 | 1    | 0.7      | CW        | SLV   |             |          | 7062-3151   | H    |       |
| A160                       | SP   | 3.3  | 1/30               | 115     | 3000 | 1    | 1.6      | CW        | SLV   |             |          | Amana, 7002-2407  | I    |       |
| A180                       | SP   | 3.3  | 1/30               | 115     | 3400 | 1    | 1.8      | CCW       | BALL  |             |          | 7021-9625, 20190601                                       | J    |       |
| A185                       | SP   | 3.3  | 1/30               | 115     | 3000 | 1    | 1.15     | CW        | SLV   |             |          | 7021-9316, 105854-04                                      | K    |       |
| A280                       | SP   | 3.3  | 1/25               | 115     | 3000 | 1    | 1.5      | CW        | SLV   |             |          | 7021-7794, D986868  | L    |       |
| A283                       | SP   | 3.3  | 1/25               | 115     | 3000 | 1    | 1.5      | CCW       | SLV   |             |          | 7021-8730, D9868617                                       | L    |       |
| A286                       | SP   | 3.3  | 1/35               | 208/230 | 3125 | 1    | 0.6      | CW        | SLV   |             |          | 7021-9398, 11096904                                       | K    |       |
| A287                       | SP   | 3.3  | 1/25               | 115     | 3000 | 1    | 1.15     | CW        | SLV   |             |          | 7021-9655, 10585405                                       | K    |       |
| A289                       | SP   | -    | 1/32               | 208/230 | 3125 | 1    | 0.75     | CW        | BALL  |             |          | 7058-0081, 20351402                                       | M    |       |
| <b>AMERICAN AIR FILTER</b> |      |      |                    |         |      |      |          |           |       |             |          |   |      |       |
| ▶ D1065                    | PSC  | 5    | 1/6                | 277     | 1600 | 1    | 0.9      | CCW       | SLV   | 1/2 X 2 1/2 | 3 1/3    | ZCAABBWY15141, IWCQ5827<br>5KCP29DK3697T                  | N    | 1     |
| ▶ D827                     | PSC  | 5.6  | 1/8                | 115     | 700  | 1    | 2.5      | CCW       | BALL  | 1/2 X 2     | 5 1/2    | 7-150444-02   | O    | 3     |

NOTES: 1: 4M 370V capacitor 3: 6M 370V capacitor 18: Rotation is determined by viewing lug end. 195: 50/60 Hz



FIG. A D1028



FIG. B A087



FIG. C A120



FIG. D D1062



FIG. E D1056



FIG. F D1058



FIG. G A129



FIG. H A158



FIG. I A160



FIG. J A180

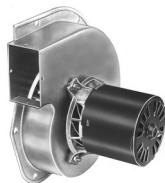


FIG. K A185, A286, A287



FIG. L A280, A283



FIG. M A289



FIG. N D1065



FIG. O D827



| FASCO MODEL           | TYPE | DIA. | HP        | VOLTS   | RPM  | SPD. | AMPS    | ROT. | BRNG. | SHAFT DIM.   | "A" DIM. | CROSS REF.   | FIG. | NOTES |
|-----------------------|------|------|-----------|---------|------|------|---------|------|-------|--------------|----------|--|------|-------|
| <b>APRILAIRE</b>      |      |      |           |         |      |      |         |      |       |              |          |  |      |       |
| D1110                 | SP   | 3.3  | 1/55      | 115     | 1300 | 1    | .7      | CW   | BALL  | 1/4 X 1 7/8  | 3 5/8    | 7163-8633, 10002351  | A    |       |
| D1114                 | SP   | 3.3  | 1/11      | 115     | 1250 | 1    | .5      | CW   | SLV   | 1/4 X 3 1/8  | 2 1/2    | 7163-7448, 33110076  | B    |       |
| <b>ARKLA</b>          |      |      |           |         |      |      |         |      |       |              |          |  |      |       |
| D795                  | PSC  | 5.6  | 1/3       | 115     | 825  | 1    | 6.1     | REV  | BALL  | 1/2 X 6      | 5 3/4    | Gas Heat Pump, K55HXSFN8042  | C    |       |
| <b>ARMSTRONG</b>      |      |      |           |         |      |      |         |      |       |              |          |  |      |       |
| A155                  | SP   | 3.3  | 1/30      | 115     | 3000 | 1    | 1.4     | CCW  | BALL  |              |          | 7021-10046   | D    |       |
| <b>BOHN</b>           |      |      |           |         |      |      |         |      |       |              |          |  |      |       |
| D1124                 | SP   | 3.3  | 1/20      | 115     | 1550 | 1    | 2.1     | CW   | SLV   | 5/16 X 3     | 3        | 5KSM59JSK143S & 5KSM59JS5036S  | E    | 75    |
| D1126                 | SP   | 3.3  | 1/15      | 208-230 | 1550 | 1    | 1.1     | CW   | SLV   | 5/16 X 3     | 3 1/2    | 5KSM59LS2262AS   | E    | 75    |
| D1125                 | PSC  | 3.3  | 1/12      | 208-230 | 1550 | 1    | 0.5     | CCW  | SLV   | 5/16 X 2 5/8 | 3 3/4    | 7190-0442  | F    | 29    |
| <b>BROAN</b>          |      |      |           |         |      |      |         |      |       |              |          |  |      |       |
| K610                  | SP   | -    | 1/60      | 115     | 3000 | 2    | .88-.68 | CCW  | SLV   | .217 X 1.3   |          | Motor 30080011, Model Y2-52000   | G    |       |
| K612                  | SP   | -    | 1/65      | 115     | 3000 | 1    | 0.8     | CW   | SLV   | .25 X 2.7    |          | Model 162 (Before 1980)  | H    |       |
| K611                  | SP   | -    | 1/100     | 115     | 3000 | 1    | 0.67    | CCW  | SLV   | .25 X 2.45   |          | Model 162 (After 1980)   | I    |       |
| D1087                 | SP   | 5    | 1/12      | 115     | 1050 | 1    | 2.9     | CW   | SLV   | 1/2 X 2 1/3  | 2 5/8    | 99-08-0178, 7151-3160  | J    |       |
| K110                  | SP   | -    | 1/75      | 115     | 3000 | 1    | 0.9     | CCW  | SLV   | .217 X 2.37  |          | 99-08-0165, 670A   | K    |       |
| <b>BRYANT/CARRIER</b> |      |      |           |         |      |      |         |      |       |              |          |  |      |       |
| D803                  | PSC  | 5.6  | 1/3 - 1/4 | 230     | 1075 | 2    | 2.6-2.2 | REV  | SLV   | 1/2 X 3 1/2  | 4 1/2    | K55HXLKK-5918, HC41VB701   | L    |       |
| D1179                 | SP   | 3.3  | 1/30      | 115     | 3000 | 1    | 1.5     | CW   | SLV   | 5/16 X 2     | 3 1/2    | BDP P251-2916<br>FRANKLIN 8251510360   | M    |       |
| D1180                 | SP   | 3.3  | 1/20      | 115     | 3300 | 1    | 1.9     | CW   | SLV   | 5/16 X 2 1/8 | 3 5/8    | Carrier HC27UE120,<br>BDP 398A, BDP P251-2307<br>U.E. JAIP053N, UE Stock 580 | M    |       |

NOTES: 29: 4M 370V capacitor included 75: Shell Turbo 68, low temp. oil (-40°F)



FIG. A D1110



FIG. B D1114



FIG. C D795



FIG. D A155



FIG. E D1124, D1126



FIG. F D1125



FIG. G K610



FIG. H K612

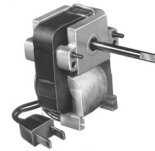


FIG. I K611



FIG. J D1087

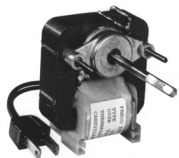


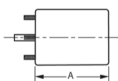
FIG. K K110



FIG. L D803



FIG. M D1179, D1180



Thermally protected • UL recognized • CSA or ULc certified  
**NOTE:** Rotation is determined by looking at shaft end. Shaft length is measured from motor face.

NEW ITEM! See page 113 for a complete listing of all our new products.



| FASCO MODEL              | TYPE | DIA. | HP                     | VOLTS   | RPM  | SPD. | AMPS    | ROT. | BRNG. | SHAFT DIM.              | "A" DIM. | CROSS REF.   | FIG. | NOTES  |
|--------------------------|------|------|------------------------|---------|------|------|---------|------|-------|-------------------------|----------|--|------|--------|
| <b>BRYANT/PAYNE</b>      |      |      |                        |         |      |      |         |      |       |                         |          |  |      |        |
| D847                     | PSC  | 5.6  | 1/8                    | 208-230 | 1125 | 1    | 0.9     | CCW  | SLV   | 1/2 X 3 1/2             | 3 3/4    | K1543, HC35VE-230<br>KA55CGD-9658                                | A    |        |
| <b>BUCK STOVE</b>        |      |      |                        |         |      |      |         |      |       |                         |          |  |      |        |
| D1138                    | SP   | 3.3  | 1/50 - 1/80 -<br>1/140 | 115     | 1500 | 3    | .9-6-.5 | CW   | SLV   | 5/16 X 2 1/2            | 4        | R22CCW270ZD<br>7163-6045   | B    |        |
| D1139                    | SP   | 3.3  | 1/50 - 1/80 -<br>1/125 | 115     | 1500 | 3    | 0.88    | CW   | SLV   | 2 1/2 X 5/16<br>X 1 1/8 | 2 13/16  | R22CW206MD   | C    |        |
| <b>BUTLER VENTILATOR</b> |      |      |                        |         |      |      |         |      |       |                         |          |  |      |        |
| D1066                    | SP   | 5    | 1/10                   | 115     | 1050 | 1    | 3.6     | CW   | BALL  | 1/2 X 2 3/4             | 3 7/8    | 846PY4V, 2414  | D    |        |
| <b>CAMCO</b>             |      |      |                        |         |      |      |         |      |       |                         |          |  |      |        |
| D1119                    | SP   | 3.3  | 1/90                   | 240     | 1500 | 1    | 0.34    | CCW  | SLV   | 1/4 X 1 1/2             | 2 1/4    | Universal JBIP04410V<br>Electrohome 2868-<br>405-173, Rotom R302 | E    |        |
| <b>CARRIER</b>           |      |      |                        |         |      |      |         |      |       |                         |          |  |      |        |
| D455                     | SP   | 3.3  | 1/30                   | 115/230 | 3000 | 1    | 1.3-.7  | CCW  | BALL  | 1/4 X 3 7/8             | 5 7/8    |  | F    | 7, 196 |
| D456                     | SP   | 3.3  | 1/15                   | 115/230 | 3000 | 1    | 2-1     | CW   | BALL  | 1/4 X 2 3/4             | 6 1/2    |  | G    | 7, 196 |
| D457                     | SP   | 3.3  | 1/15                   | 115/230 | 3000 | 1    | 2-1     | CCW  | BALL  | 1/4 X 2 3/4             | 6 1/2    |  | G    | 7, 196 |
| D458                     | SP   | 3.3  | 1/15                   | 208-230 | 3000 | 1    | 1       | CW   | BALL  | 1/4 X 2 3/4             | 6 1/2    |  | G    | 7, 196 |
| D1174                    | SP   | 3.3  | 1/15                   | 460     | 3000 | 1    | 0.6     | CW   | BALL  | 1/4 X 2 1/2             | 6 3/4    | Carrier HC34AU725A<br>Universal JB1P044NV<br>HC24AU725           | G    | 8      |
| D1178                    | PSC  | 3.3  | 1/15                   | 208-230 | 3450 | 1    | 0.45    | CW   | BALL  | 1/4 X 2 3/4             | 6 3/4    | Carrier HC680001,<br>Fasco 7162-3829                             | H    |        |

NOTES: 7: Includes shaft bushing 8: Does not have shaft bushing 196: Draft Booster/ Flue Exhaust/ Switch Motors

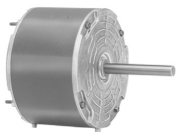


FIG. A D847



FIG. B D1138



FIG. C D1139



FIG. D D1066



FIG. E D1119



FIG. F D455



FIG. G D456, D457, D458,  
D1174



FIG. H D1178



| FASCO MODEL            | TYPE | DIA. | HP                    | VOLTS   | RPM  | SPD. | AMPS             | ROT. | BRNG. | SHAFT DIM.          | "A" DIM. | CROSS REF.   | FIG. | NOTES |
|------------------------|------|------|-----------------------|---------|------|------|------------------|------|-------|---------------------|----------|--|------|-------|
| <b>CARRIER (CONT.)</b> |      |      |                       |         |      |      |                  |      |       |                     |          |  |      |       |
| D864                   | PSC  | 5.6  | 1/6 - 1/8 - 1/10      | 208-230 | 1040 | 3    | 1.3-1.2-1.1      | CW   | SLV   | 2 1/8 X 1/2 X 7 1/4 | 3 3/4    | 124279, 128560, 124276, 7126-0103, 7126-0043   | A    |       |
| D842                   | PSC  | 5.6  | 1/5                   | 230     | 1075 | 1    | 1.3              | CW   | SLV   | 1/2 X 3 X 1/4       | 3 3/4    | HC37VE230<br>Cond. Round unit  | B    | 1     |
| D848                   | PSC  | 5.6  | 1/5 - 1/6 - 1/8       | 265-277 | 1040 | 3    | 1.1-8-.7         | CW   | SLV   | 3 X 1/2 X 7         | 3 1/2    | 51PH124275<br>HC37MB-730   | A    |       |
| D463                   | SP   | 3.3  | 1/30                  | 208-230 | 3000 | 1    | 0.65             | CW   | BALL  | 5/16 X 2 1/2        | 3 7/8    | HC24HE230  | C    |       |
| D1182                  | PSC  | 3.3  | 1/16                  | 208-230 | 3450 | 1    | 0.57             | CCW  | SLV   | 5/16 X 3 1/3        | 4 1/2    | 7162-3367<br>HC30GB230B<br>K33HXCCP-915<br>HC30GB230   | D    |       |
| D459                   | SP   | 3.3  | 1/15                  | 230/460 | 3000 | 1    | 1.2-.6           | CW   | BALL  | 1/4 X 3             | 7        | HC24AU725A, JB1P044<br>AB1S078, JB1R039<br>AB1S029   | E    |       |
| D844                   | PSC  | 5.6  | 1/4                   | 230     | 1625 | 1    | 1.5              | CW   | SLV   | 1/2 X 3             | 3 1/2    | HC37ME268<br>5KCP39BG7524S   | F    | 1     |
| D843                   | PSC  | 5.6  | 1/4 - 1/5             | 208-230 | 1075 | 1    | 2.2-2            | REV  | SLV   | 1/2 X 4 1/4         | 4        | F48SG6MA10, F48SG6MA16<br>F48SG6MA28, F48SG6MA37<br>F48SJ6MA28, HC37MZ220,<br>HC39VE608, HC39ML706,<br>HC39ME720 | G    |       |
| D802                   | PSC  | 5.6  | 1/2                   | 460     | 1050 | 1    | 0.9              | REV  | BALL  | 1/2 X 3 1/3         | 5 1/2    | Carrier HC44VL463A<br>AO Smith FEH1056S<br>GE 5KCP39PGH600CS   | H    |       |
| S2846                  | PSC  | 5.6  | 1/2                   | 230/460 | 1075 | 1    | 3.9-2            | REV  | BALL  | 1/2 X 5 3/8         | 6 1/2    | Canopy Type<br>Outdoor Condenser Fan Motor   | I    |       |
| D838                   | PSC  | 5.6  | 3/4 - 1/2 - 1/3 - 1/4 | 115     | 1075 | 4    | 11.2-9.7-7.5-6.4 | REV  | SLV   | 1/2 X 6 1/2         | 5 1/4    | HC45SE116, SC435X101,<br>HC43SE116   | J    |       |
| S2848                  | PSC  | 5.6  | 3/4                   | 230/460 | 1075 | 1    | 4.7-2.4          | REV  | BALL  | 1/2 X 6             | 7 3/4    | Canopy Type<br>Outdoor Condenser Fan Motor   | K    |       |

NOTES: 1: 4M 370V capacitor



FIG. A D864, D848



FIG. B D842



FIG. C D463



FIG. D D1182



FIG. E D459



FIG. F D844



FIG. G D843



FIG. H D802



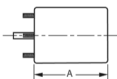
FIG. I S2846



FIG. J D838



FIG. K S2848



Thermally protected • UL recognized • CSA or ULc certified  
**NOTE:** Rotation is determined by looking at shaft end. Shaft length is measured from motor face.

NEW ITEM! See page 113 for a complete listing of all our new products.



| FASCO MODEL                    | TYPE | DIA. | HP                  | VOLTS   | RPM  | SPD. | AMPS            | ROT. | BRNG. | SHAFT DIM.             | "A" DIM. | CROSS REF.  | FIG. | NOTES |
|--------------------------------|------|------|---------------------|---------|------|------|-----------------|------|-------|------------------------|----------|---|------|-------|
| <b>CARRIER/WHIRLPOOL</b>       |      |      |                     |         |      |      |                 |      |       |                        |          |   |      |       |
| D1176                          | PSC  | 3.3  | 1/15 - 1/25         | 115     | 1550 | 2    | .9-.8           | DS   | SLV   | 4 7/8 X 3/8<br>X 4 7/8 | 4        | 130096, 202466  | A    | 1     |
| <b>CHAMPION COOLER</b>         |      |      |                     |         |      |      |                 |      |       |                        |          |   |      |       |
| D1069                          | SP   | 5    | 1/10 - 1/15         | 115     | 1040 | 2    | 3.5-2.2         | DS   | SLV   | 3 X 3/8 X 3            | 2 5/8    | 7151-2925, 7151-0109, MP2500  | B    |       |
| <b>CHROMALOX</b>               |      |      |                     |         |      |      |                 |      |       |                        |          |   |      |       |
| D1118                          | SP   | 3.3  | 1/30                | 240     | 1500 | 1    | 0.6             | CW   | BALL  | 5/16 X 3 1/2           | 2 13/16  | 2868-811-005B, 2868-505-016,<br>2686-511-027A                         | C    |       |
| <b>CHRYSLER AIRTEMP</b>        |      |      |                     |         |      |      |                 |      |       |                        |          |   |      |       |
| D1022                          | PSC  | 5    | 1/5 - 1/6<br>- 1/8  | 208-230 | 1100 | 3    | 1.6-1<br>.1-1   | CW   | SLV   | 2 3/8 X 1/2<br>X 2 3/4 | 3 7/8    | 3704387, 2874493, 2874495   | D    | 16    |
| <b>COLEMAN</b>                 |      |      |                     |         |      |      |                 |      |       |                        |          |   |      |       |
| A088                           | SP   | 3.3  | 1/25                | 115     | 3200 | 1    | 1.3             | CW   | SLV   |                        |          | 7021-5478   | E    |       |
| <b>COLEMAN</b>                 |      |      |                     |         |      |      |                 |      |       |                        |          |   |      |       |
| D178                           | SP   | 5    | 1/8 - 1/11          | 115     | 1050 | 2    | 4.5-3.4         | CW   | SLV   | 1/2 X 4                | 3 1/4    | Blower Motor  | F    |       |
| D408                           | SP   | 3.3  | 1/150               | 115     | 3000 | 1    | 0.5             | CW   | SLV   | 1/4 X 1 1/2            | 5 1/2    | 7995-316, 7121-5906   | G    |       |
| <b>CONSOLIDATED INDUSTRIES</b> |      |      |                     |         |      |      |                 |      |       |                        |          |   |      |       |
| A128                           | SP   | 3.3  | 1/50                | 120     | 3000 | 1    | 0.9             | CW   | SLV   |                        |          | 7021-6376, 7021-9404  | H    |       |
| <b>COPELAND</b>                |      |      |                     |         |      |      |                 |      |       |                        |          |   |      |       |
| D783                           | PSC  | 5.6  | 1/4                 | 208-230 | 1625 | 1    | 1.5             | REV  | SLV   | 1/2 X 6                | 4        | 3047, 050-0238-00   | I    |       |
| <b>DUOTHERM</b>                |      |      |                     |         |      |      |                 |      |       |                        |          |   |      |       |
| D1080                          | SP   | 5    | 1/6                 | 115     | 1050 | 1    | 7.9             | CW   | BALL  | 1/2 X 4                | 4 1/2    | 3-14826; 100,000 BTU Furnaces   | J    |       |
| D1081                          | PSC  | 5    | 1/6 - 1/8 -<br>1/10 | 115     | 1625 | 3    | 2.4-1.9-<br>1.5 | REV  | SLV   | 3 1/2 X 1/2<br>X 3 5/8 | 4 7/8    | 3-9650; 12,000 - 13,000 BTU's<br>5KCP29MG40115<br>8743810260, 3-18440 | K    | 12    |
| D1001                          | SP   | 5    | 1/15                | 115     | 1000 | 1    | 3.2             | CW   | SLV   | 3/8 X 3 1/4            | 2 1/3    | 3-9930  | L    |       |

NOTES: 1: 4M 370V capacitor 12: 10M 370V Capacitor 16: Rotation is determined by viewing lug end



FIG. A D1176



FIG. B D1069



FIG. C D1118



FIG. D D1022



FIG. E A088



FIG. F D178



FIG. G D408

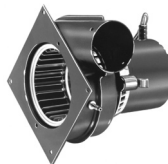


FIG. H A128



FIG. I D783



FIG. J D1080



FIG. K D1081



FIG. L D1001



| FASCO MODEL                               | TYPE | DIA. | HP              | VOLTS   | RPM  | SPD. | AMPS        | ROT. | BRNG. | SHAFT DIM.          | "A" DIM. | CROSS REF.  | FIG. | NOTES |
|---|------|------|-----------------|---------|------|------|-------------|------|-------|---------------------|----------|---|------|-------|
| <b>ECONOMITE/MID-CONTINENT GAS BURNER</b> |      |      |                 |         |      |      |             |      |       |                     |          |   |      |       |
| D1151                                     | SP   | 3.3  | 1/40            | 115     | 1500 | 1    | 1.2         | CCW  | SLV   | 5/16 X 3 1/4        | 2 3/4    | AA2P026N  | A    |       |
| <b>EMERSON</b>                            |      |      |                 |         |      |      |             |      |       |                     |          |   |      |       |
| D1033                                     | PSC  | 5    | 1/5 - 1/6 - 1/8 | 208-230 | 1400 | 3    | 1.6-1.5-1.3 | DS   | SLV   | 2 3/4 X 1/2 X 3 1/2 | 3 3/4    | Quiet Cool  | B    |       |
| <b>EVANS/ARMSTRONG/LSI/HOME</b>           |      |      |                 |         |      |      |             |      |       |                     |          |   |      |       |
| D825                                      | PSC  | 5.6  | 1 - 3/4         | 230     | 1625 | 2    | 6.2 - 5.6   | REV  | SLV   | 1/2 X 3             | 6 3/4    | 5KCP35SG6445  | C    | 12    |
| <b>EVCON</b>                              |      |      |                 |         |      |      |             |      |       |                     |          |   |      |       |
| K629                                      | SP   | -    | 1/85            | 115     | 2950 | 1    | 0.67        | CW   | SLV   | 1/4 X 1 1/8         |          | 7102-2187   | D    |       |
| A156                                      | SP   | 3.3  | 1/35            | 115     | 3000 | 1    | 1.1         | CW   | SLV   |                     |          | Evcon, 7021-8935  | E    |       |
| <b>EXCEL COMFORT</b>                      |      |      |                 |         |      |      |             |      |       |                     |          |   |      |       |
| A100                                      | SP   | -    | 1/45            | 115     | 2900 | 1    | 1.21        | CW   | SLV   |                     |          | 7058-0280, 20093603/B   | F    |       |
| <b>FASCO</b>                              |      |      |                 |         |      |      |             |      |       |                     |          |   |      |       |
| K102                                      | SP   | -    | 1/200           | 115     | 3000 | 1    | 0.64        | CW   | SLV   | .181 X 1.5          |          | Model 2435  | G    |       |
| K100                                      | SP   | -    | 1/100           | 115     | 3000 | 1    | 0.71        | CW   | SLV   | .181 X 1.11         |          | 0648-0027 Ventilator  | H    |       |
| K101                                      | SP   | -    | 1/150           | 230     | 3000 | 1    | 0.58        | CCW  | SLV   | .217 X 1.34         |          | Model 2540; 7102-0001 Motor   | I    |       |
| D1159                                     | SP   | 3.3  | 1/130           | 115     | 1500 | 1    | 0.45        | CCW  | SLV   | 5/16 X 1 1/8        | 2 1/8    | 7163-1845, VENT 656, VENT 293A, VENT PV7896                                 | J    |       |
| D1160                                     | SP   | 3.3  | 1/100           | 115     | 1480 | 1    | 0.58        | CW   | SLV   | 5/16 X 1 1/2        | 2 1/8    | 7163-2593, 663, 668, 763, 768, 661, 761                                     | J    |       |
| D1162                                     | SP   | 3.3  | 1/100           | 115     | 1500 | 1    | 0.6         | REV  | SLV   | 5/16 X 1            | 3 1/2    | 7163-9809<br>7163-1541, Model 659 Vent                                      | K    |       |
| D1161                                     | SP   | 3.3  | 1/15 - 1/25     | 115     | 1600 | 2    | 2.9-2       | CCW  | SLV   | 5/16 X 2            | 4 1/4    | Several Blower Applications   | L    |       |
| D824                                      | PSC  | 5.6  | 1/4 - 1/8       | 115     | 1100 | 2    | 3.2-2.4     | REV  | BALL  | 1/2 X 3 1/2         | 5 3/4    | Pedestal Fan 7126-0922, 7126-2594, 7126-0485, 7126-0936                     | M    |       |
| D820                                      | PSC  | 5.6  | 1/3 - 1/4       | 120     | 1050 | 2    | 4.8-4.5     | REV  | SLV   | 1/2 X 2             | 4 1/4    | Whole house fans<br>7126-1194, 7126-0545, 7126-0158<br>7126-0460, 7126-1195 | N    |       |

NOTES: 12: 10M 370V Capacitor



FIG. A D1151



FIG. B D1033



FIG. C D825



FIG. D K629



FIG. E A156



FIG. F A100



FIG. G K102



FIG. H K100



FIG. I K101



FIG. J D1159, D1160



FIG. K D1162

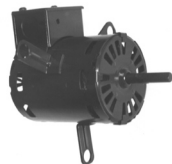


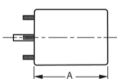
FIG. L D1161



FIG. M D824



FIG. N D820



Thermally protected • UL recognized • CSA or ULc certified  
**NOTE:** Rotation is determined by looking at shaft end. Shaft length is measured from motor face.

▶ NEW ITEM! See page 113 for a complete listing of all our new products.



| FASCO MODEL      | TYPE | DIA. | HP                          | VOLTS   | RPM  | SPD. | AMPS              | ROT. | BRNG. | SHAFT DIM.          | "A" DIM. | CROSS REF.  | FIG. | NOTES |
|------------------|------|------|-----------------------------|---------|------|------|-------------------|------|-------|---------------------|----------|---|------|-------|
| <b>FEDDERS</b>   |      |      |                             |         |      |      |                   |      |       |                     |          |   |      |       |
| D441             | SP   | 3.3  | 1/80                        | 115     | 1500 | 1    | 0.6               | CCW  | SLV   | 1/4 X 1             | 2 1/8    | Fedders, Oasis, Whirlpool Port Dehumidifiers  | A    |       |
| D186             | SP   | 3.3  | 1/20                        | 460     | 1500 | 1    | 0.4               | CW   | SLV   | 5/16 X 2 1/3        | 2 7/8    | Roof Top A/C  | B    |       |
| D1012            | SP   | 4.4  | 1/15 - 1/20 - 1/25          | 115     | 1550 | 3    | 2.3-1.9-1.6       | DS   | SLV   | 3 X 3/8 X 3         | 3 3/8    | RMR, RY1302, 5206-00025-001 Y24CW50, 7190-0163  | C    |       |
| D1010            | SP   | 5    | 1/8 - 1/12 - 1/15           | 115     | 1050 | 3    | 4.4-3-2.3         | DS   | SLV   | 3 1/3 X 1/2 X 2 3/4 | 3 3/8    | Window AC Motor; S196-20-2  | D    |       |
| D1011            | SP   | 5    | 1/6 - 1/12 - 1/15           | 208-230 | 1050 | 3    | 2.5-1.6-1.2       | DS   | SLV   | 3 1/3 X 1/2 X 2 3/4 | 3 1/4    | Window AC Motors; S196-42-1, S296-161-3   | D    |       |
| D884             | PSC  | 5.6  | 1/6 - 1/8 - 1/10            | 115     | 1050 | 3    | 2.3-2-1.8         | DS   | SLV   | 5 X 1/2 X 4         | 3 3/4    | S196-59-1, 2:72-1, 2:73-1, 2:74-1,2,3   | E    |       |
| D882             | PSC  | 5.6  | 1/5                         | 230     | 1080 | 1    | 1.5               | CW   | SLV   | 1/2 X 4 1/4         | 3 1/2    | Condenser Fan; S196-179-1   | F    | 17    |
| D1016            | PSC  | 5    | 1/4                         | 230     | 1100 | 1    | 2                 | CW   | SLV   | 1/2 X 4 1/8         | 3 7/8    | Condenser Fan; S196-18-2  | G    |       |
| A159             | SP   | 3.3  | 1/40                        | 230     | 1550 | 1    | 0.5               | CCW  | BALL  |                     |          | AK4K84BX; 11-7096   | H    |       |
| A161             | SP   | 3.3  | 1/40                        | 230     | 1600 | 1    | 0.6               | CCW  | BALL  |                     |          | Brinkley 8353920103; Fedders  | I    |       |
| <b>FRIEDRICH</b> |      |      |                             |         |      |      |                   |      |       |                     |          |   |      |       |
| D868             | PSC  | 5.6  | 1/3 - 1/4 - 1/5 - 1/6 - 1/7 | 230     | 1075 | 5    | 2.1-1.5-1.2-1-0.9 | CCW  | SLV   | 2 3/4 X 1/2 X 2 1/4 | 4 3/4    | 5KCP39MG90965, 5KCP39KGE9925 5KCP39LGD8045, 5KCP39LGG7205 5KCP39LGK010T, 5KCP39MG7145S 5KCP39MG9679S, 5KCP39LGM011T | J    | 18    |
| <b>FRYMASTER</b> |      |      |                             |         |      |      |                   |      |       |                     |          |   |      |       |
| A110             | SP   | -    | 1/70                        | 115     | 3212 | 1    | 0.76              | CW   | BALL  |                     |          | 7021-0898   | K    | 195   |
| A111             | SP   | 3.3  | 1/40                        | 208-240 | 3200 | 1    | 0.8               | CWLE | BALL  |                     |          | 7021-11294, 8073637   | L    |       |

NOTES: 17: 7.5M 370V Cap installed 18: Rotation is determined by viewing lug end. 195: 50/60 Hz



FIG. A D441



FIG. B D186



FIG. C D1012



FIG. D D1010, D1011



FIG. E D884

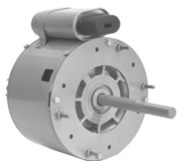


FIG. F D882

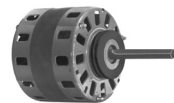


FIG. G D1016



FIG. H A159



FIG. I A161



FIG. J D868



FIG. K A110



FIG. L A111





| FASCO MODEL                            | TYPE | DIA. | HP                           | VOLTS   | RPM      | SPD. | AMPS            | ROT.  | BRNG. | SHAFT DIM.             | "A" DIM. | CROSS REF.   | FIG. | NOTES |
|--|------|------|------------------------------|---|----------|------|-----------------|-------|-------|------------------------|----------|--|------|-------|
| <b>GAFFERS AND SATTLER</b>             |      |      |                              |   |          |      |                 |       |       |                        |          |  |      |       |
| D862                                   | PSC  | 5.6  | 1/2 - 1/3                    | 208-230                                       | 1075     | 2    | 3.2-3           | DS    | SLV   | 2 5/8 X 1/2<br>X 2 1/2 |          | Roof Top A/C Direct;<br>Pak 1.5 & 2.0 EA   | A    | 13    |
| <b>GENERAL ELECTRIC</b>                |      |      |                              |   |          |      |                 |       |       |                        |          |  |      |       |
| D896                                   | PSC  | 5.6  | 1/5 - 1/8                    | 208-230                                       | 1625     | 2    | 1.1-.7          | CCWLE | SLV   | 2 7/8 X 1/2<br>X 2 1/4 | 3 3/4    | KCP39DGD7795,<br>WJ94X0518   | B    | 1     |
| D897                                   | PSC  | 5.6  | 1/5 - 1/6<br>- 1/8 -<br>1/10 | 230   | 1075     | 4    | 1.5-1.1-<br>1-8 | CW    | SLV   | 2 3/8 X 1/2<br>X 2 1/2 | 3 3/4    | KCP39EG5480S,<br>5KCP39DGK014T<br>5KCP39EG5480S, WP94X1,<br>WJ94X162                           | C    | 1, 18 |
| D894                                   | PSC  | 5.6  | 1/6                          | 277   | 1650     | 1    | 0.8             | CW    | SLV   | 1/2 X 2 1/4            | 3 3/4    | 5KCP39CGP7275  | D    |       |
| D1050                                  | PSC  | 5    | 1/8                          | 230   | 1550     | 1    | 1.1             | CW    | SLV   | 1/2 X 3                | 3 1/4    | A/C Condenser;<br>KSP29DK1728S   | E    | 202   |
| D264                                   | PSC  | 5    | 1/8                          | 230   | 1550     | 1    | 1.1             | REV   | SLV   | 1/2 X 5                | 3 1/4    | A/C Cond. Fan Motor  | E    |       |
| D1086                                  | PSC  | 5    | 1/12 -<br>1/25               | 277   | 1625     | 2    | .6-.2           | CCW   | SLV   | 6 1/2 X 1/2<br>X 6 1/2 | 3 1/4    | 5KCP29CK3586AS   | F    |       |
| D2850                                  | PSC  | 5.6  | 1 - 3/4                      | 208-230/460<br>60 HZ,<br>200/380-415<br>50 HZ | 1125/950 | 1    | 4.6/2.3         | CW    | BALL  | 1/2 X 3.45             | 6 1/2    | 5KCP39SFL153DS (GE);<br>MOT05717<br>Trane X70671180017,<br>X70670706010,<br>MOT03771, MOT05717 | G    | 20    |
| D2851                                  | PSC  | 5.6  | 1 - 3/4                      | 208-230/460<br>60 HZ,<br>200/380-415<br>50 HZ | 1125/950 | 1    | 4.6/2.3         | CW    | BALL  | 5/8 X 3.75<br>Keyed    | 6 1/2    | 5KCP39SFL153DS (GE);<br>MOT09188<br>MOT09188, MOT09192,<br>Trane X7067165301<br>X70671656010   | G    | 20    |
| <b>GIBSON-BELDING &amp; KELVINATOR</b> |      |      |                              |   |          |      |                 |       |       |                        |          |  |      |       |
| D1853                                  | PSC  | 5.6  | 1/3 - 1/4<br>- 1/5           | 230   | 1090     | 3    | 2-1.9-<br>1.8   | CW    | SLV   | 6 X 1/2 X<br>2 7/8     | 4 1/4    | G519243, G505976,<br>K55HXNEC-6830   | H    | 21    |
| D854                                   | PSC  | 5.6  | 1/3 - 1/4<br>- 1/6           | 208-230                                       | 1365     | 3    | 2.8-1.7-<br>1.2 | CCW   | SLV   | 4 1/2 X 1/2<br>X 2 5/8 | 4 1/2    | Franklin X157668, X152275,<br>82181  | I    | 9, 21 |
| D855                                   | PSC  | 5.6  | 1/3 - 1/4<br>- 1/5           | 230   | 1365     | 3    | 2.7-2-<br>1.7   | DS    | SLV   | 8 X 1/2 X<br>8 3/4     | 4 1/4    | RAK7024  | J    | 9     |
| D856                                   | PSC  | 5.6  | 1/3 - 1/4<br>- 1/5           | 230   | 1300     | 3    | 3.1             | CW    | SLV   | 5 1/4 X 1/2<br>X 3     | 5        | G519244, G505971,<br>K55HXNEM6844  | K    | 21    |

NOTES: 1: 4M 370V capacitor 9: 3M 370V capacitor 13: 7.5M 370V Capacitor 18: Rotation is determined by viewing lug end. 20: Not a direct replacement, but suitable for referenced models. 21: Rotation is determined from viewing lug end 202: Original motor is SP, D1050 is PSC to provide greater motor efficiency and permit closing shaft end of motor to prevent moisture from entering motor.



FIG. A D862



FIG. B D896



FIG. C D897



FIG. D D894



FIG. E D1050, D264



FIG. F D1086



FIG. G D2850, D2851



FIG. H D1853



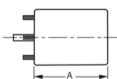
FIG. I D854



FIG. J D855



FIG. K D856



Thermally protected • UL recognized • CSA or ULc certified  
**NOTE:** Rotation is determined by looking at shaft end. Shaft length is measured from motor face.



| FASCO MODEL    | TYPE | DIA. | HP   | VOLTS   | RPM       | SPD. | AMPS    | ROT. | BRNG. | CROSS REF.             | FIG. | NOTES |
|----------------|------|------|------|---------|-----------|------|---------|------|-------|------------------------|------|-------|
| <b>GOODMAN</b> |      |      |      |         |           |      |         |      |       |                        |      |       |
| ▶ A065         | SP   | -    | 1/50 | 115     | 3000      | 1    | 1.22    | CCW  | BALL  | 0131M00002P, 119276-00 | A    |       |
| A140           | SP   | 3.3  | 1/50 | 115     | 3400      | 1    | 1.4     | CW   | SLV   | 7021-9087, 7021-9000   | B    |       |
| A157           | SP   | -    | 1/35 | 115     | 3000      | 1    | 1.3     | CCW  | SLV   | 7002-2307              | C    |       |
| A162           | SP   | 3.3  | 1/50 | 208-230 | 3000      | 1    | 0.5     | CCW  | SLV   | 7021-8656              | D    |       |
| A079           | SP   | 3.3  | 1/50 | 115     | 3000      | 1    | 1.1     | CCW  | SLV   | 7021-6804              | E    |       |
| A181           | SP   | 3.3  | 1/30 | 115     | 3192      | 1    | 1.5     | CW   | BALL  | 7058-0136, 20044403    | F    |       |
| A182           | SP   | 3.3  | 1/35 | 115     | 3125      | 1    | 1.2     | CCW  | SLV   | 7002-3036, B4059000    | G    |       |
| A184           | SP   | 3.3  | 1/35 | 115     | 3125      | 1    | 1.55    | CCW  | BALL  | 7058-0229, B40590-01   | H    |       |
| A187           | SP   | 3.3  | 1/20 | 208-230 | 3250      | 1    | 0.8     | CW   | SLV   | 7021-10006, 20028901   | I    |       |
| A188           | SP   | 3.3  | 1/18 | 115     | 3250      | 1    | 1.6     | CW   | SLV   | 7021-10958, B4833000   | J    |       |
| A189           | SP   | 3.3  | 1/24 | 115     | 3000      | 1    | 1.5     | CW   | SLV   | 7021-7302, D9868620    | K    |       |
| A281           | SP   | 3.3  | 1/40 | 115     | 3000      | 1    | 0.9     | CW   | SLV   | 7021-8252, D6996405    | L    |       |
| A282           | SP   | 3.3  | 1/60 | 220     | 2600      | 1    | 0.45    | CCW  | SLV   | 7021-8448, B1859050S   | M    |       |
| A284           | SP   | 3.3  | 1/30 | 208/240 | 3000      | 1    | .59/.5  | CW   | SLV   | 7021-9227, D9886202    | L    |       |
| A285           | SP   | 3.3  | 1/40 | 115     | 3250      | 2    | 1.4     | CW   | SLV   | 7021-9236, B2833002    | B    |       |
| A288           | SP   | 3.3  | 1/30 | 115     | 3100      | 2    | 1.4/.65 | CW   | BALL  | 7021-9727, 11177202    | N    |       |
| A290           | PSC  | 3.3  | 1/20 | 115     | 3200/2400 | 2    | 0.7     | CCW  | BALL  | 7062-5015, 20245903    | O    |       |



FIG. A A065



FIG. B A140, A285



FIG. C A157



FIG. D A162

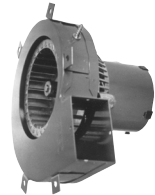


FIG. E A079



FIG. F A181

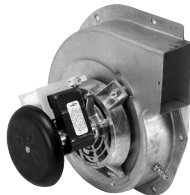


FIG. G A182



FIG. H A184



FIG. I A187



FIG. J A188



FIG. K A189

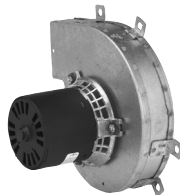


FIG. L A281, A284

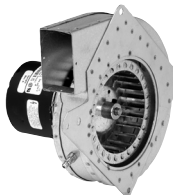


FIG. M A282

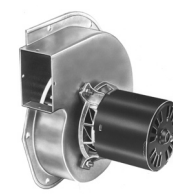


FIG. N A288



FIG. O A290



| FASCO MODEL          | TYPE | DIA. | HP                 | VOLTS   | RPM       | SPD. | AMPS      | ROT. | BRNG. | SHAFT DIM.   | "A" DIM. | CROSS REF.                   | FIG. | NOTES |
|----------------------|------|------|--------------------|---------|-----------|------|-----------|------|-------|--------------|----------|------------------------------|------|-------|
| <b>GREENHECK FAN</b> |      |      |                    |         |           |      |           |      |       |              |          |                              |      |       |
| D1061                | SP   | 4.4  | 1/20 - 1/30 - 1/60 | 115     | 1500      | 3    | 2-1.7-1.4 | CCW  | SLV   | 1/2 X 2 3/4  |          | 7108-2425                    | A    |       |
| <b>HEAT N GLOW</b>   |      |      |                    |         |           |      |           |      |       |              |          |                              |      |       |
| A133                 | SP   | -    | 1/50               | 115     | 3000      | 1    | 1.2       | CCW  | SLV   |              |          | 7002-1241                    | B    |       |
| <b>HEATCRAFT</b>     |      |      |                    |         |           |      |           |      |       |              |          |                              |      |       |
| D1122                | PSC  | 3.3  | 1/16               | 208-230 | 1650/1300 | 1    | 0.4       | CW   | SLV   | 5/16 X 1 5/8 | 3 5/8    | 7190-2255, 25308601          | C    | 22    |
| D1123                | PSC  | 3.3  | 1/15               | 208-230 | 1550      | 1    | 0.5       | CCW  | SLV   | 5/16 X 2 5/8 | 3 7/8    | 7190-2285, 25309101          | D    | 1     |
| <b>HEIL-QUAKER</b>   |      |      |                    |         |           |      |           |      |       |              |          |                              |      |       |
| A064                 | SP   | 3.3  | 1/55               | 115     | 3150      | 1    | 0.7       | CW   | SLV   |              |          | 610172, 7021-5043            | E    |       |
| D2810                | PSC  | 5.6  | 1/6                | 208-230 | 1100      | 1    | 1         | CCW  | SLV   | 1/2 X 2      |          | HQ 1050892EM, KA55HXHMK-2379 | F    |       |
| D1071                | PSC  | 5    | 1/6                | 208-230 | 1100      | 1    | 0.99      | REV  | SLV   | 1/2 X 2 1/8  |          | HQ 1052662EM; 48HXCLW-1562   | G    |       |
| A148                 | SP   | 3.3  | 1/50               | 208-230 | 3000      | 1    | 0.5       | CCW  | SLV   |              |          | HEIL QUAKER, 7021-9237       | H    |       |
| A151                 | SP   | 3.3  | 1/90               | 230     | 2800      | 1    | 0.3       | CW   | SLV   |              |          | INTER CITY, HQ1050144        | I    |       |
| <b>HERMAN NELSON</b> |      |      |                    |         |           |      |           |      |       |              |          |                              |      |       |
| D829                 | PSC  | 5.6  | 1/4                | 115     | 825       | 1    | 3.8       | REV  | SLV   | 1/2 X 2      | 5 5/8    |                              | J    |       |
| D880                 | PSC  | 5.6  | 1/4                | 115     | 1050      | 1    | 4.3       | CCW  | BALL  | 1/2 X 1 1/2  | 5 1/2    |                              | K    |       |
| D827                 | PSC  | 5.6  | 1/8                | 115     | 700       | 1    | 2.5       | CCW  | BALL  | 1/2 X 2      | 5 1/2    | 7-150444-02                  | K    |       |

NOTES: 1: 4M 370V capacitor 22: 2M 370V Capacitor



FIG. A D1061



FIG. B A133



FIG. C D1122



FIG. D D1123



FIG. E A064



FIG. F D2810



FIG. G D1071



FIG. H A148



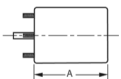
FIG. I A151



FIG. J D829



FIG. K D880, D827



Thermally protected • UL recognized • CSA or ULc certified  
**NOTE:** Rotation is determined by looking at shaft end. Shaft length is measured from motor face.

NEW ITEM! See page 113 for a complete listing of all our new products.



| FASCO MODEL                  | TYPE | DIA. | HP                       | VOLTS   | RPM  | SPD. | AMPS            | ROT. | BRNG. | SHAFT DIM.          | "A" DIM. | CROSS REF.                              | FIG. | NOTES      |
|------------------------------|------|------|--------------------------|---------|------|------|-----------------|------|-------|---------------------|----------|---|------|------------|
| <b>HILL REFRIGERATION</b>    |      |      |                          |         |      |      |                 |      |       |                     |          |   |      |            |
| D801                         | PSC  | 5.6  | 1/3                      | 208-230 | 1625 | 1    | 2.9             | CCW  | SLV   | 1/2 X 4             | 4 1/2    | 5KCP39KG1369S                           | A    |            |
| D800                         | PSC  | 5.6  | 1                        | 208-230 | 1075 | 1    | 7.1-6.4         | CW   | BALL  | 1/2 X 3 3/4         | 5 1/4    | PP19162G, 5KCP39GC030S<br>5KCP39PGC910S | B    | 24,<br>114 |
| <b>HONEYWELL AIR CLEANER</b> |      |      |                          |         |      |      |                 |      |       |                     |          |   |      |            |
| D1054                        | SP   | 5    | 1/12 -<br>1/20 -<br>1/25 | 115     | 1050 | 3    | 3.1-2<br>.1-1.5 | CW   | SLV   | 1/2 X 2 1/2         | 2 5/8    | 190386A; 5KSP29DK1906S                  | C    |            |
| <b>HUSSMAN</b>               |      |      |                          |         |      |      |                 |      |       |                     |          |   |      |            |
| D807                         | PSC  | 5.6  | 1/6                      | 208-230 | 1625 | 1    | 1.2             | CCW  | BALL  | 1/2 X 4 7/8         | 3 3/4    | 5KCP39EGC244T, 5KSP39FG4771S            | D    | 1          |
| D890                         | PSC  | 5.6  | 1/2                      | 208-230 | 1725 | 1    | 2.7             | CCW  | SLV   | 1/2 X 3 1/2         | 4 1/2    | 259983, K55HXCTP-9963                   | E    |            |
| K114                         | SP   | -    | 1/500                    | 115     | 3000 | 1    | 0.64            | CCW  | SLV   | .181 X 1.75         |          | 301-5734                                | F    | 25         |
| <b>IEC</b>                   |      |      |                          |         |      |      |                 |      |       |                     |          |   |      |            |
| D1040                        | PSC  | 5    | 1/5                      | 208/240 | 925  | 3    | 1.6             | CW   | SLV   | 1/2 X 8             | 4 1/3    | 5KCP29KK8385S, S89209                   | G    | 197        |
| D1041                        | PSC  | 5    | 1/15                     | 265     | 1075 | 3    | 0.6             | CW   | SLV   | 1/2 X 7 1/8         | 3 7/8    | 5KCP29DK8389S, S89206                   | H    |            |
| D1043                        | PSC  | 5    | 1/4                      | 265     | 1075 | 3    | 1.6             | CW   | SLV   | 1/2 X 6 1/4         | 4 5/8    | 5KCP29DK8386S, 289211                   | I    |            |
| D1044                        | PSC  | 5    | 1/4                      | 115     | 970  | 3    | 6               | CW   | SLV   | 1/2 X 8             | 4 1/3    | 5KCP29DK8387S, S89210                   | G    |            |
| D1045                        | PSC  | 5    | 1/30                     | 115-127 | 1100 | 3    | 0.53            | CW   | SLV   | 1/2 X 9             | 3 1/8    | 5KCP29BK8382S, S89202                   | J    | 29         |
| D1047                        | PSC  | 5    | 1/20                     | 208-230 | 1075 | 3    | 1.6             | CW   | SLV   | 1/2 X 7 1/8         | 3 7/8    | 5KCP29FK8028S, S88935                   | H    |            |
| D1048                        | PSC  | 5    | 1/20                     | 277     | 1075 | 3    | 0.5             | CW   | SLV   | 1/2 X 7 1/4         | 3 7/8    | 5KCP29FK8132S, S89205                   | K    |            |
| D1049                        | PSC  | 5    | 1/20                     | 265     | 1075 | 3    | 0.4             | CW   | SLV   | 1/2 X 7 1/8         | 3 7/8    | 5KCP29FK8388S, S89204                   | H    |            |
| D1053                        | PSC  | 5    | 1/30                     | 265     | 1075 | 3    | 0.38            | CW   | SLV   | 1/2 X 7 1/8         | 3 1/3    | 5KCP29BK8094S, S89203                   | H    |            |
| D1055                        | PSC  | 5    | 1/12                     | 115-127 | 1375 | 3    | 1.4             | DS   | SLV   | 9 1/8 X 1/2 X 9 1/2 | 3 1/8    | 5KCP29BK8383S, S89207                   | L    | 3          |
| D1059                        | PSC  | 5    | 1/6                      | 115-127 | 1450 | 3    | 2.3             | DS   | SLV   | 8 3/4 X 1/2 X 9     | 3 1/3    | 5KCP29DK8384S, S89208                   | L    | 31         |
| <b>ILG</b>                   |      |      |                          |         |      |      |                 |      |       |                     |          |   |      |            |
| D115                         | SP   | 4.4  | 1/12                     | 115/230 | 1550 | 1    | 2.5-1.3         | CCW  | SLV   | 1/2 X 2             | 4 1/8    | 78-27-721T; Fasco 7108-2237             | M    |            |
| D1039                        | SP   | 4.4  | 1/10                     | 115     | 1610 | 1    | 3.1             | CCW  | SLV   | 1/2 X 2 3/8         | 4 1/2    | 78-27-611N; Fasco 7108-2171             | N    |            |

NOTES: 1: 4M 370V capacitor 3: 6M 370V capacitor 24: 15M 370V Capacitor 25: Equipped with KFAN6046 fan blade 29: 4M 370V capacitor included 31: 5M 370V Capacitor 114: Separate connection for each voltage 197: For 208V use 7.5M 370V Capacitor and 240V use 6M 370V Capacitor

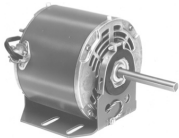


FIG. A D801

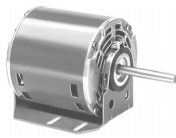


FIG. B D800

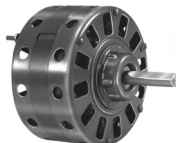


FIG. C D1054



FIG. D D807



FIG. E D890

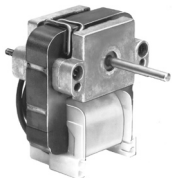


FIG. F K114



FIG. G D1040, D1044



FIG. H D1041, D1047, D1049,  
D1053



FIG. I D1043



FIG. J D1045



FIG. K D1048



FIG. L D1055, D1059



FIG. M D115



FIG. N D1039



| FASCO MODEL               | TYPE | DIA. | HP    | VOLTS   | RPM  | SPD. | AMPS | ROT. | BRNG. | CROSS REF.                                 | FIG. | NOTES |
|---------------------------|------|------|-------|---------|------|------|------|------|-------|--|------|-------|
| <b>INTERCITY PRODUCTS</b> |      |      |       |         |      |      |      |      |       |  |      |       |
| D1167                     | SP   | 3.3  | 1/40  | 208-230 | 3000 | 1    | 0.55 | CCW  | SLV   | 1708-518, 7121-5854                        | A    |       |
| A051                      | SP   | -    | 1/60  | 115     | 3000 | 1    | 1.6  | CW   | BALL  | 1013833, J238-1393                         | B    |       |
| A067                      | SP   | 3.3  | 1/20  | 115     | 3000 | 1    | 2.6  | CW   | BALL  | 1014338, 119225-00                         | C    |       |
| A134                      | SP   | 3.3  | 1/25  | 115     | 3060 | 1    | 1.5  | CW   | SLV   | 7021-9335, 7021-8735, 7021-9499, 7021-8736 | D    |       |
| A145                      | PSC  | 3.3  | 1/25  | 115     | 3450 | 1    | 0.7  | CCW  | BALL  | 7062-4061                                  | E    | 26    |
| A141                      | SP   | 3.3  | 1/60  | 115     | 2800 | 1    | 1    | CW   | BALL  | 7021-8741, 7021-8742                       | F    |       |
| A148                      | SP   | 3.3  | 1/50  | 208-230 | 3000 | 1    | 0.5  | CCW  | SLV   | 7021-7617, 7021-9237                       | G    |       |
| A151                      | SP   | 3.3  | 1/90  | 230     | 2800 | 1    | 0.3  | CW   | SLV   | HEIL QUAKER, HQ1050144                     | H    |       |
| A169                      | SP   | 3.3  | 1/25  | 230     | 2800 | 1    | 0.75 | CW   | SLV   | 7021-10048, 7021-10580                     | I    |       |
| A170                      | SP   | 3.3  | 1/25  | 115     | 3400 | 1    | 2.3  | CCW  | BALL  | 7021-10702, 7021-10299                     | J    |       |
| A171                      | PSC  | 3.3  | 1/25  | 115     | 3450 | 1    | 0.7  | CCW  | BALL  | 7062-4783, 1011412                         | K    |       |
| A172                      | SP   | -    | 1/35  | 115     | 3000 | 1    | 1.6  | CW   | BALL  | 7002-2792, 1010975P                        | L    |       |
| A173                      | PSC  | 3.3  | 1/18  | 115     | 3450 | 1    | 0.8  | CCW  | BALL  | 7062-4578, 1011350                         | M    |       |
| A174                      | SP   | 3.3  | 1/100 | 115     | 2350 | 1    | 0.8  | CW   | SLV   | 7021-9188, 1010239                         | F    |       |
| A175                      | SP   | -    | 1/40  | 115     | 3300 | 1    | 1    | CCW  | SLV   | 7002-1891, 1708-600P                       | N    |       |

NOTES: 26: 4M 250V Capacitor included



FIG. A D1167



FIG. B A051



FIG. C A067



FIG. D A134



FIG. E A145



FIG. F A141, A174



FIG. G A148



FIG. H A151



FIG. I A169



FIG. J A170



FIG. K A171



FIG. L A172



FIG. M A173



FIG. N A175



Thermally protected • UL recognized • CSA or ULc certified  
**NOTE:** Rotation is determined by looking at shaft end. Shaft length is measured from motor face.

▶ NEW ITEM! See page 113 for a complete listing of all our new products.



| FASCO MODEL               | TYPE | DIA. | HP        | VOLTS   | RPM       | SPD. | AMPS    | ROT. | BRNG. | SHAFT DIM.      | "A" DIM. | CROSS REF.   | FIG. | NOTES  |
|---------------------------|------|------|-----------|---------|-----------|------|---------|------|-------|-----------------|----------|--|------|--------|
| <b>INTERCITY PRODUCTS</b> |      |      |           |         |           |      |         |      |       |                 |          |  |      |        |
| A176                      | SP   | -    | 1/25      | 115     | 3100      | 1    | 2.2     | CW   | BALL  |                 |          | 7002-2946, 1011899, 7002-3071, 1011899P                                      | A    |        |
| A177                      | SP   | 3.3  | 1/36      | 115     | 3000      | 2    | 1.4     | CW   | BALL  |                 |          | 7021-10363, 1011632, 7021-10597, 1011632P                                    | B    |        |
| A178                      | SP   | 3.3  | 1/30      | 115     | 3400      | 1    | 1.8     | CW   | BALL  |                 |          | 7021-10928, 1013388FA  | C    |        |
| A179                      | SP   | 3.3  | 1/60      | 115     | 3300      | 1    | 0.9     | CW   | SLV   |                 |          | 7021-8693, 1006168P  | D    |        |
| A301                      | SP   | 3.3  | 1/100     | 115     | 2350      | 1    | 0.8     | CW   | SLV   |                 |          | 7021-9498, 1010239P  | E    |        |
| A302                      | SP   | 3.3  | 1/25      | 115     | 3060      | 1    | 1.5     | CW   | SLV   |                 |          | 7021-9499, 1010324P, 7021-7700, 1708-607                                     | B    |        |
| A304                      | SP   | 3.3  | 1/25      | 115     | 3060      | 1    | 1.5     | CW   | SLV   |                 |          | 7021-9701, 1011021   | B    |        |
| A306                      | PSC  | 3.3  | 1/30      | 208-230 | 3350/2900 | 2    | 0.3     | CCW  | SLV   |                 |          | 7062-4532, 1097245   | F    | 195    |
| A307                      | PSC  | 3.3  | 1/24      | 115     | 3450      | 1    | 0.7     | CW   | SLV   |                 |          | 7062-5165, 1149097, 7062-3794, 1008416P                                      | G    |        |
| <b>INTERTHERM-ADDISON</b> |      |      |           |         |           |      |         |      |       |                 |          |  |      |        |
| D872                      | PSC  | 5.6  | 3/4 - 1/2 | 230     | 1075      | 2    | 4.3-3.5 | DS   | SLV   | 2 X 1/2 X 6 1/4 | 5 1/2    | 5KCP39MGN341T  | H    | 27     |
| <b>ITT REZNOR</b>         |      |      |           |         |           |      |         |      |       |                 |          |  |      |        |
| D404                      | PSC  | 3.3  | 1/10      | 208-230 | 3000      | 1    | 0.8     | REV  | BALL  | 5/16 X 3 1/4    | 4 1/4    | CW175-40069, 7162-0293<br>CCW505-43424, 7162-0348<br>CCW175-40070, 7162-0294 | I    | 29, 85 |
| D405                      | PSC  | 3.3  | 1/10      | 115     | 3000      | 1    | 1.4     | REV  | BALL  | 5/16 X 3 1/4    | 4 1/4    | CCW77162-0311<br>CCW175-43846<br>CW7162-0224, CW36860                        | I    | 29     |

NOTES: 27: 12.5M 370V Capacitor 29: 4M 370V capacitor included 85: Air Over 195: 50/60 Hz



FIG. A A176



FIG. B A177, A302, A304



FIG. C A178

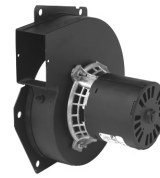


FIG. D A179



FIG. E A301

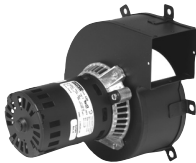


FIG. F A306



FIG. G A307

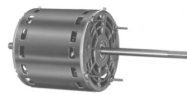


FIG. H D872



FIG. I D404, D405



| FASCO MODEL                | TYPE | DIA. | HP   | VOLTS       | RPM  | SPD. | AMPS    | ROT. | BRNG. | SHAFT DIM.   | "A" DIM. | CROSS REF.  | FIG. | NOTES |
|----------------------------|------|------|------|-------------|------|------|---------|------|-------|--------------|----------|---|------|-------|
| <b>JAKEL</b>               |      |      |      |             |      |      |         |      |       |              |          |   |      |       |
| A072                       | SP   | -    | 1/45 | 115         | 3000 | 1    | 1.15    | CW   | BALL  |              |          | J238-1344   | A    |       |
| <b>JANITROL</b>            |      |      |      |             |      |      |         |      |       |              |          |   |      |       |
| A073                       | SP   | 3.3  | 1/40 | 115-230     | 3000 | 1    | .7/35   | CCW  | BALL  |              |          | 82932, 8251560133   | B    |       |
| A079                       | SP   | 3.3  | 1/50 | 115         | 3000 | 1    | 1.1     | CCW  | SLV   |              |          | 7021-6804   | C    |       |
| <b>JENN AIR</b>            |      |      |      |             |      |      |         |      |       |              |          |   |      |       |
| D1173                      | SP   | 3.3  | 1/30 | 115         | 1500 | 1    | 1.2     | CW   | BALL  | 5/16 X 2 1/2 | 3 7/8    | 70CR  | D    |       |
| D1170                      | SP   | 4.4  | 1/15 | 115         | 1500 | 1    | 2.1     | CW   | BALL  | 3/8 X 2 1/2  | 4 3/4    | 80CR  | E    |       |
| D377                       | SP   | 4.4  | 1/12 | 115         | 1500 | 1    | 3.1     | CCW  | SLV   | 3/8 X 2      | 2 3/4    | 7108-2101   | F    |       |
| <b>JOHNSON FURNACE</b>     |      |      |      |             |      |      |         |      |       |              |          |   |      |       |
| A081                       | SP   | 3.3  | 1/40 | 230         | 3000 | 1    | 0.5     | CCW  | BALL  |              | 3 1/2    | HWC Series Unit   | G    |       |
| A085                       | SP   | 3.3  | 1/30 | 230         | 3000 | 1    | 0.7     | CCW  | BALL  |              |          | AO Smith 464, Johnson Furnace   | H    |       |
| <b>KEEPRITE</b>            |      |      |      |             |      |      |         |      |       |              |          |   |      |       |
| D1243                      | PSC  | 3.3  | 1/20 | 115         | 1550 | 1    | 0.8     | CCW  | SLV   | 5/16 X 2 3/4 | 4 1/8    | 501899, 7164-1243, 7164-1854, R370  | I    | 29    |
| D1245                      | PSC  | 3.3  | 1/20 | 208-230     | 1550 | 1    | 0.3     | CCW  | SLV   | 5/16 X 2 3/4 | 4        | 501909, 7164-1313, 7164-1853, R371  | I    | 29    |
| D1120                      | SP   | 3.3  | 1/20 | 115         | 1550 | 1    | 2.1     | CW   | SLV   | 5/16 X 2 1/2 | 3 1/2    | 7163-8722, 1043336  | J    |       |
| D1121                      | SP   | 3.3  | 1/20 | 208-230     | 1550 | 1    | 1       | CW   | SLV   | 5/16 X 2 1/2 | 3 1/2    | 7163-8861, 1043766  | J    |       |
| D1246                      | SP   | 4.4  | 1/15 | 115         | 1550 | 1    | 2.3     | CCW  | SLV   | 3/8 X 1 3/4  | 3 1/2    | 81356, 7108-2206  | K    |       |
| <b>KRACK REFRIGERATION</b> |      |      |      |             |      |      |         |      |       |              |          |   |      |       |
| D1158                      | SP   | 3.3  | 1/20 | 115/208-230 | 1550 | 1    | 1.4-.8  | CW   | BALL  | 5/16 X 1 5/8 | 3 5/16   | Commercial Refrigeration Units  | L    |       |
| D1189                      | SP   | 3.3  | 1/20 | 115/208-230 | 1550 | 1    | 1.4-.76 | CW   | BALL  | 5/16 X 1 5/8 | 3 1/8    | 11528, 11529, JB2P046N, JA2P216N<br>JA2P217N, JB2P047N, 8354110940,<br>8254111030 | M    |       |

NOTES: 29: 4M 370V capacitor included



FIG. A A072



FIG. B A073

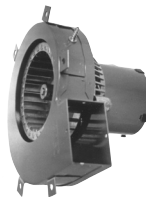


FIG. C A079



FIG. D D1173



FIG. E D1170



FIG. F D377



FIG. G A081



FIG. H A085



FIG. I D1243, D1245



FIG. J D1120, D1121



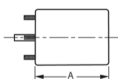
FIG. K D1246



FIG. L D1158



FIG. M D1189



Thermally protected • UL recognized • CSA or ULc certified  
**NOTE:** Rotation is determined by looking at shaft end. Shaft length is measured from motor face.

NEW ITEM! See page 113 for a complete listing of all our new products.



| FASCO MODEL           | TYPE | DIA. | HP   | VOLTS   | RPM  | SPD. | AMPS | ROT. | BRNG. | SHAFT DIM.   | "A" DIM. | CROSS REF.                                 | FIG. | NOTES   |
|-----------------------|------|------|------|---------|------|------|------|------|-------|--------------|----------|--|------|---------|
| <b>KRAMER/TRENTON</b> |      |      |      |         |      |      |      |      |       |              |          |  |      |         |
| D1152                 | SP   | 3.3  | 1/20 | 115     | 1500 | 1    | 1.7  | CW   | SLV   | 5/16 X 2 3/8 | 2 7/8    | 5KSM59ES2001                               | A    |         |
| D1154                 | SP   | 3.3  | 1/20 | 230     | 1550 | 1    | 1    | CW   | SLV   | 5/16 X 2 3/8 | 3 1/8    | JA2R140N                                   | A    |         |
| D2862                 | PSC  | 5.6  | 1/2  | 208-230 | 1075 | 1    | 4    | REV  | BALL  | 1/2 X 3      | 6 1/2    | 5KCP37PN244BS, MTG3041                     | B    | 13      |
| <b>LARKIN COIL</b>    |      |      |      |         |      |      |      |      |       |              |          |  |      |         |
| D1101                 | SP   | 3.3  | 1/20 | 115     | 1500 | 1    | 1.9  | CCW  | SLV   | 5/16 X 2 1/4 | 2 3/4    | Larkin No. 253-1194<br>Fasco No. 7163-2113 | A    | 75      |
| D1103                 | SP   | 3.3  | 1/20 | 208-230 | 1500 | 1    | 1.15 | CCW  | SLV   | 5/16 X 2 1/4 | 3        | Fasco No. 7163-3371, 252-1195              | A    | 75, 201 |
| D863                  | PSC  | 5.6  | 1/2  | 208-230 | 1075 | 1    | 4    | REV  | BALL  | 1/2 X 3      | 6 3/4    | SCS0500HI-CPM120-3<br>5KCP39PGH728T        | C    | 13      |
| <b>LEAR SIEGLER</b>   |      |      |      |         |      |      |      |      |       |              |          |  |      |         |
| D1046                 | SP   | 5    | 1/8  | 115     | 1070 | 1    | 5.1  | CW   | SLV   | 1/2 X 2 1/4  | 3        | 305313-000-165, 7151-0073, 7151-2826       | D    |         |
| <b>LENNOX</b>         |      |      |      |         |      |      |      |      |       |              |          |  |      |         |
| A068                  | SP   | -    | 1/60 | 120     | 3000 | 1    | 1.15 | CCW  | BALL  |              |          | 88K8401, J238-8171                         | E    |         |
| A138                  | SP   | 3.3  | 1/70 | 120     | 3000 | 1    | 0.7  | CCW  | SLV   |              |          | LENNOX, 7021-8657, 7021-8825               | F    |         |
| A135                  | SP   | 3.3  | 1/60 | 120     | 3000 | 1    | 0.7  | CCW  | SLV   |              |          | LENNOX, 7021-8812, 7021-8819               | G    |         |
| A163                  | SP   | 3.3  | 1/20 | 115     | 3400 | 1    | 1.8  | CCW  | BALL  |              |          | LENNOX, 7021-9450                          | H    |         |
| A164                  | SP   | 3.3  | 1/50 | 120     | 3400 | 1    | 0.8  | CCW  | SLV   |              |          | LENNOX, 7021-9593                          | I    |         |
| A200                  | SP   | -    | 1/30 | 115     | 3000 | 1    | 1.95 | CCW  | SLV   |              |          | 7002-2975, 31L5501                         | J    |         |
| A201                  | SP   | 3.3  | 1/30 | 208-230 | 3000 | 1    | 0.65 | CCW  | BALL  |              |          | 7021-10055, 41144-002                      | K    |         |
| A202                  | SP   | 3.3  | 1/30 | 115     | 3400 | 1    | 1.8  | CCW  | BALL  |              |          | 7021-10602, 45037-001                      | L    |         |
| A203                  | SP   | 3.3  | 1/20 | 115     | 3400 | 1    | 1.8  | CCW  | BALL  |              |          | 7021-10841, 49L5301                        | M    |         |
| A204                  | SP   | 3.3  | 1/20 | 115     | 3400 | 1    | 1.8  | CCW  | BALL  |              |          | 7021-11406, 83L4101                        | N    |         |
| A205                  | SP   | 3.3  | 1/20 | 120     | 3000 | 1    | 0.7  | CCW  | SLV   |              |          | 7021-8372, T6-2118                         | G    |         |
| A206                  | SP   | 3.3  | 1/25 | 115     | 3000 | 1    | 1.5  | CW   | SLV   |              |          | 7021-8473, 65204100/20J8901                | O    |         |

NOTES: 13: 7.5M 370V Capacitor 75: Shell Turbo 68, low temp. oil (-40°F) 201: Not a direct replacement for 253-1194, but is an acceptable substitute



FIG. A **D1152, D1154, D1101, D1103**



FIG. B **D2862**

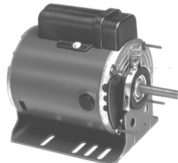


FIG. C **D863**



FIG. D **D1046**



FIG. E **A068**



FIG. F **A138**



FIG. G **A135, A205**



FIG. H **A163**



FIG. I **A164**



FIG. J **A200**



FIG. K **A201**



FIG. L **A202**



FIG. M **A203**



FIG. N **A204**

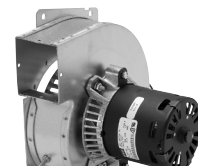


FIG. O **A206**





| FASCO MODEL   | TYPE | DIA. | HP   | VOLTS   | RPM       | SPD. | AMPS    | ROT. | BRNG. | SHAFT DIM.   | "A" DIM. | CROSS REF.  | FIG. | NOTES |
|---------------|------|------|------|---------|-----------|------|---------|------|-------|--------------|----------|---|------|-------|
| <b>LENNOX</b> |      |      |      |         |           |      |         |      |       |              |          |   |      |       |
| A207          | SP   | -    | 1/28 | 115     | 3000      | 1    | 1.75    | CCW  | BALL  |              |          | 7058-0217, 60M7901                                  | A    |       |
| A208          | SP   | -    | 1/28 | 115     | 3000      | 1    | 1.75    | CCW  | BALL  |              |          | 7058-0322, 60M8101                                  | B    |       |
| A209          | PSC  | 3.3  | 1/20 | 115     | 3200/2800 | 2    | 0.8     | CCW  | BALL  |              |          | 7062-5441, 38M5001                                  | C    |       |
| A210          | SP   | 3.3  | 1/30 | 115     | 3000      | 2    | 1.7     | CCW  | BALL  |              |          | 7021-11063, 18M6701                                 | D    |       |
| A211          | SP   | 3.3  | 1/15 | 115     | 3400      | 1    | 2.35    | CCW  | BALL  |              |          | 7021-11634, 81M1601                                 | E    |       |
| A213          | SP   | 3.3  | 1/25 | 115     | 3200      | 2    | 2.1     | CCW  | BALL  |              |          | 7021-10376, 18L0401                                 | F    |       |
| A216          | SP   | 3.3  | 1/25 | 115     | 3200      | 2    | 2.1     | CCW  | BALL  |              |          | 7021-10915, 60L1401                                 | F    |       |
| A217          | SP   | 3.3  | 1/16 | 230     | 3000      | 1    | 0.83    | CCW  | BALL  |              |          | 7021-11231, 25M5501                                 | G    |       |
| A218          | SP   | 3.3  | 1/28 | 220-240 | 3000      | 1    | .60/.52 | CCW  | BALL  |              |          | 7021-10676, 39L4201, 7021-8959, 60J4201             | H    |       |
| A219          | SP   | 3.3  | 1/65 | 120     | 3000      | 1    | 0.7     | CCW  | SLV   |              |          | 7021-9262, 88J3901                                  | I    |       |
| A320          | SP   | 3.3  | 1/60 | 115     | 3000      | 1    | .8      | CCW  | SLV   |              |          | 7021-9646, 101154-01, 7021-9466                     | I    |       |
| A322          | SP   | 3.3  | 1/70 | 120     | 3000      | 2    | 1.1     | CCW  | SLV   |              |          | 7021-9884, 83L8201                                  | J    |       |
| A324          | PSC  | 3.3  | 1/12 | 230     | 3200      | 1    | .44     | CW   | BALL  |              |          | 7062-1909, 28G6601, 7062-1794                       | K    |       |
| A325          | PSC  | 3.3  | 1/10 | 208-230 | 3200      | 1    | 0.6     | CW   | BALL  |              |          | 7062-2845, 7062-4751, 98G8701                       | L    |       |
| A329          | PSC  | 3.3  | 1/12 | 208-230 | 3200      | 1    | 0.5     | CW   | BALL  |              |          | 7062-4819, 19L1501                                  | M    |       |
| A330          | PSC  | 3.3  | 1/12 | 208-230 | 3200      | 1    | 0.55    | CW   | BALL  |              |          | 7062-5546, 7062-4517, 7062-4608, 7062-4083, 69M3301 | N    |       |
| A331          | PSC  | 3.3  | 1/10 | 460     | 3200      | 1    | .38/.33 | CW   | BALL  |              |          | 7062-5554, 69M3201, 7062-4051, 7062-4518, 97J8101   | N    |       |
| D1198         | SP   | 3.3  | 1/30 | 115     | 3200      | 1    | 1.5     | CCW  | SLV   | 5/16 X 2 1/4 | 3 1/8    | 7121-8774   | O    | 33    |

NOTES: 33: Stainless steel shaft



FIG. A A207



FIG. B A208



FIG. C A209



FIG. D A210



FIG. E A211



FIG. F A213, A216



FIG. G A217



FIG. H A218



FIG. I A219, A320



FIG. J A322



FIG. K A324



FIG. L A325



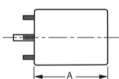
FIG. M A329



FIG. N A330, A331



FIG. O D1198



Thermally protected • UL recognized • CSA or ULc certified  
**NOTE:** Rotation is determined by looking at shaft end. Shaft length is measured from motor face.

NEW ITEM! See page 113 for a complete listing of all our new products.



| FASCO MODEL       | TYPE | DIA. | HP                    | VOLTS   | RPM      | SPD. | AMPS            | ROT. | BRNG. | SHAFT DIM.          | "A" DIM. | CROSS REF.  | FIG. | NOTES   |
|-------------------|------|------|-----------------------|---------|----------|------|-----------------|------|-------|---------------------|----------|---|------|---------|
| <b>LENNOX</b>     |      |      |                       |         |          |      |                 |      |       |                     |          |   |      |         |
| D812              | PSC  | 5.6  | 1/3 - 1/4 - 1/6 - 1/8 | 115     | 1075     | 4    | 6.1-3.2-2.2-1.6 | CW   | SLV   | 1/2 X 3 1/8         | 4 1/4    | P-8-7505  | A    |         |
| D816              | PSC  | 5.6  | 1/3                   | 208-230 | 1075     | 1    | 2.2             | CW   | SLV   | 1/2 X 3 3/4         | 4        | P-8-8041-A3048, 5KCP39HG0766T   | B    |         |
| D818              | PSC  | 5.6  | 1/3 - 1/5 - 1/6       | 115     | 825      | 3    | 7.3-5.1-3.9     | CW   | SLV   | 1/2 X 3             | 6 3/4    | P-8-8325, 5KCP39-PGD698S  | C    | 27      |
| D2817             | PSC  | 5.6  | 1/3                   | 230     | 825      | 1    | 3.2             | REV  | SLV   | 1/2 X 6             | 5 3/4    | 5KCP39PG9701S, 5KCP39PG34P0AS   | D    |         |
| D2814             | PSC  | 5.6  | 1/2                   | 230     | 1050     | 1    | 2.6             | CW   | BALL  | 1/2 X 3 1/4         | 5 3/4    | P-8-5770  | E    | 31      |
| D813              | PSC  | 5.6  | 3/4 - 1/2 - 1/3       | 230     | 1075     | 3    | 5.9-3-2.4       | DS   | SLV   | 5 1/4 X 5/8 X 6 1/2 | 6        | 31C8201, K55HXRYT-8180 K63BHXHW-1158, 5KCP49NG1009, 5KCP35SN49S, P-8-6426 | F    | 12      |
| D2818             | PSC  | 5.6  | 3/4 - 1/3             | 230     | 1075     | 2    | 5-2.2           | REV  | BALL  | 5/8 X 4 1/2 Keyed   | 7 3/4    | P-8-8711, 5KCP49SG1010S   | G    | 24, 200 |
| D2816             | PSC  | 5.6  | 1 - 1/2 - 1/3         | 115     | 1075     | 3    | 11.8-6.3-3.9    | REV  | BALL  | 5/8 X 4             | 7 3/4    | P-8-8326, 5KCP49SG1053S   | G    | 15      |
| <b>LOMANCO</b>    |      |      |                       |         |          |      |                 |      |       |                     |          |   |      |         |
| D1008             | SP   | 4.4  | 1/10                  | 115     | 1500     | 1    | 4.4             | CW   | SLV   | 1/2 X 1 3/4         | 3        | OLM6151, 322P151  | H    |         |
| <b>LOREN COOK</b> |      |      |                       |         |          |      |                 |      |       |                     |          |   |      |         |
| D1100             | SP   | 3.3  | 1/50                  | 115     | 1550/900 | 2    | 1.2/7           | CW   | SLV   | 5/16 X 2 3/8        | 2 7/8    | 7173-1580, GC/GN 142/144  | I    |         |
| D1104             | SP   | 3.3  | 1/50                  | 115     | 1550     | 1    | .9              | DS   | SLV   | 2.9 X 5/16 X 2.9    | 3        | 7163-6714, 5-10   | J    |         |
| D1117             | SP   | 3.3  | 1/65                  | 115     | 1590     | 1    | 0.6             | CW   | SLV   | 5/16 X 2 1/4        | 2 7/8    | 7163-7818, 615049, GC140  | K    | 195     |
| <b>MAGIC CHEF</b> |      |      |                       |         |          |      |                 |      |       |                     |          |   |      |         |
| D1091             | PSC  | 5    | 1/4                   | 208-230 | 1075     | 1    | 2.2             | CCW  | SLV   | 1/2 X 2 3/4         | 4 1/2    | 35035B001, 322P859, DE3L038   | L    |         |
| A081              | SP   | 3.3  | 1/40                  | 230     | 3000     | 1    | 0.5             | CCW  | BALL  |                     |          | 35035B001, 322P859, DE3L038   | M    | 33, 116 |

NOTES: 12: 10M 370V Capacitor 15: 20M 370V Capacitor 24: 15M 370V Capacitor 27: 12.5M 370V Capacitor 31: 5M 370V Capacitor 33: Stainless steel shaft 116: Replacement for Airease 195: 50/60 Hz 200: Not a direct replacement for 5KCP49SG1010S, but is an acceptable substitute.



FIG. A D812

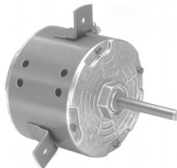


FIG. B D816



FIG. C D818



FIG. D D2817



FIG. E D2814



FIG. F D813



FIG. G D2818, D2816



FIG. H D1008



FIG. I D1100



FIG. J D1104



FIG. K D1117



FIG. L D1091



FIG. M A081



| FASCO MODEL        | TYPE | DIA. | HP                 | VOLTS   | RPM  | SPD. | AMPS        | ROT. | BRNG. | SHAFT DIM.          | "A" DIM. | CROSS REF.  | FIG. | NOTES   |
|--------------------|------|------|--------------------|---------|------|------|-------------|------|-------|---------------------|----------|---|------|---------|
| <b>MATHIESEN</b>   |      |      |                    |         |      |      |             |      |       |                     |          |   |      |         |
| K161               | SP   | -    | 1/50               | 115     | 3000 | 1    | 1.05        | CCW  | SLV   | .217 X 1.21         |          | Many Freezer Case Applications                              | A    |         |
| <b>MCMILLAN</b>    |      |      |                    |         |      |      |             |      |       |                     |          |   |      |         |
| D177               | SP   | 5    | 1/10 - 1/20        | 115     | 1050 | 2    | 3.9-1.7     | CCW  | SLV   | 3/8 X 3 5/8         | 2 5/8    | 6152-366/6  | B    |         |
| <b>MCQUAY</b>      |      |      |                    |         |      |      |             |      |       |                     |          |   |      |         |
| D1144              | PSC  | 3.3  | 1/25 - 1/35 - 1/65 | 115     | 1200 | 3    | 1.1-.9-.6   | CW   | SLV   | 3/8 X 5 3/8         | 4 3/4    | BA2H015   | C    | 1       |
| D1142              | SP   | 3.3  | 1/15               | 115/230 | 1500 | 1    | 1.7-.9      | CW   | SLV   | 5/16 X 2 1/2        | 3 1/2    | 879-382-562-ZB-00   | D    | 175     |
| D1140              | PSC  | 3.3  | 1/10 - 1/12 - 1/15 | 115     | 1500 | 3    | 2.2-2-1.7   | DS   | SLV   | 5-5/8 X 3/8 X 5 5/8 | 4 3/4    | 879-382564B-00  | E    | 13      |
| D1141              | PSC  | 3.3  | 1/15-1/25-1/35     | 115     | 1000 | 3    | 1.3-1.1-0.9 | DS   | SLV   | 5-5/8 X 3/8 X 5-5/8 | 4 3/4    | 879-382563B-00  | E    | 1       |
| D915               | PSC  | 5.6  | 3/4 - 1/2          | 460     | 1075 | 2    | 2.5/1.6     | REV  | BALL  | 5/8 X 4 1/2         | 5 1/3    | F2417-121479, Marathon EWB48A110558AE                       | F    | 24, 115 |
| <b>MIAMI/CAREY</b> |      |      |                    |         |      |      |             |      |       |                     |          |   |      |         |
| D534               | SP   | 3.3  | 1/35 - 1/100       | 115     | 1500 | 1    | 1.4 - .5    | CW   | SLV   | 1/4 X 1             | 2 1/2    | 12324L  | G    |         |
| <b>MILLER</b>      |      |      |                    |         |      |      |             |      |       |                     |          |   |      |         |
| D1082              | SP   | 5    | 1/8                | 115     | 1070 | 1    | 6           | CW   | BALL  | 1/2 X 3 1/4         | 4        | MILLER 103080002, FASCO 7152-0020 U.E.; DA3F130N            | H    |         |
| S156               | SP   | 5    | 1/6                | 115     | 1050 | 1    | 6.6         | CW   | SLV   | 1/2 X 3 7/8         | 3 1/2    | MMG Series 80 & 100 MOC Series 80 & 100 CFM Series 80 & 100 | I    |         |

NOTES: 1: 4M 370V capacitor 13: 7.5M 370V Capacitor 24: 15M 370V Capacitor 115: Not a direct replacement for 253-1194, but is an acceptable substitute 175: Bolt circle = 3.15"

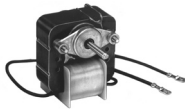


FIG. A K161

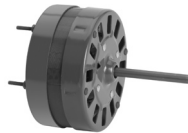


FIG. B D177



FIG. C D1144



FIG. D D1142



FIG. E D1140, D1141



FIG. F D915



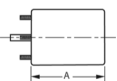
FIG. G D534



FIG. H D1082



FIG. I S156



Thermally protected • UL recognized • CSA or ULc certified  
**NOTE:** Rotation is determined by looking at shaft end. Shaft length is measured from motor face.

▶ NEW ITEM! See page 113 for a complete listing of all our new products.



| FASCO MODEL                            | TYPE | DIA. | HP        | VOLTS | RPM  | SPD. | AMPS    | ROT. | BRNG. | SHAFT DIM.   | "A" DIM. | CROSS REF.                                     | FIG. | NOTES |
|--|------|------|-----------|-------|------|------|---------|------|-------|--------------|----------|--|------|-------|
| <b>NORDYNE</b>                         |      |      |           |       |      |      |         |      |       |              |          |  |      |       |
| A131                                   | SP   | 3.3  | 1/50      | 115   | 3000 | 1    | 1.1     | CW   | SLV   |              |          | 7021-9132, 7021-10171, 7021-10159<br>7021-9661 | A    |       |
| A132                                   | SP   | 3.3  | 1/50      | 115   | 3000 | 1    | 1.1     | CW   | SLV   |              |          | 7021-7975, 6212850                             | B    |       |
| A121                                   | SP   | 3.3  | 1/45      | 240   | 3000 | 1    | 0.5     | CW   | SLV   |              |          | 7021-10381, 6217930                            | C    |       |
| A122                                   | SP   | 3.3  | 1/17      | 115   | 3000 | 1    | 1.75    | CW   | SLV   |              |          | 7021-11227, 6219490                            | D    |       |
| A123                                   | SP   | 3.3  | 1/18      | 115   | 3300 | 1    | 1.95    | CW   | BALL  |              |          | 7021-11385, 622064                             | E    |       |
| A124                                   | SP   | 3.3  | 1/15      | 115   | 3000 | 1    | 1.75    | CW   | SLV   |              |          | 7021-11379, 6219290                            | F    |       |
| A126                                   | SP   | -    | 1/45      | 115   | 3000 | 1    | 1.8     | CW   | BALL  |              |          | 7002-3158, 6219500                             | G    |       |
| <b>NUTONE</b>                          |      |      |           |       |      |      |         |      |       |              |          |  |      |       |
| ▶ D540                                 | SP   | 3.3  | 1/100     | 115   | 1500 | 1    | 0.6     | CW   | SLV   | 1/4 X 2 1/4  | 2 1/8    | Bathroom and Kitchen Vents                     | H    |       |
| ▶ D541                                 | SP   | 3.3  | 1/100     | 115   | 1500 | 1    | 0.6     | CCW  | SLV   | 1/4 X 2 1/4  | 2 1/8    | 26750 Bathroom and Kitchen Vents               | H    |       |
| ▶ D1109                                | SP   | 3.3  | 1/100     | 115   | 1500 | 1    | 0.65    | CCW  | SLV   | 1/4 X 1 1/4  | 2 1/16   | 23405, 23388                                   | I    |       |
| ▶ D1107                                | SP   | 3.3  | 1/10      | 115   | 1550 | 1    | 3.2     | CCW  | BALL  | 5/16 X 1 3/8 | 4.00"    | Nutone 67176, 32997<br>UE-JA2S034N, JB2K016N   | J    |       |
| <b>PATTON</b>                          |      |      |           |       |      |      |         |      |       |              |          |  |      |       |
| D824                                   | PSC  | 5.6  | 1/4 - 1/8 | 115   | 1100 | 2    | 3.2-2.4 | REV  | BALL  | 1/2 X 3 1/2  | 5 3/4    | 7126-0485, 7126-0922                           | K    | 1     |
| <b>PENN VENTILATOR</b>                 |      |      |           |       |      |      |         |      |       |              |          |  |      |       |
| ▶ D342                                 | SP   | 5    | 1/15      | 115   | 1050 | 1    | 2.3     | CW   | SLV   | 3/8 X 2 1/2  | 2 5/8    | 7151-3081, 7151-3565                           | L    | 34    |
| ▶ D1036                                | SP   | 5    | 1/20      | 115   | 1045 | 1    | 1.95    | CW   | SLV   | 3/8 X 2 1/8  | 2 3/8    | 7151-2139 ROOF TOP VENT Z8                     | L    |       |
| <b>PMI FOOD EQUIPMENT/ VALCUN HART</b> |      |      |           |       |      |      |         |      |       |              |          |  |      |       |
| A142                                   | PSC  | 3.3  | 1/20      | 115   | 3450 | 1    | 0.7     | CW   | SLV   |              |          | 7062-2513, 416673-00003                        | M    | 1     |

NOTES: 1: 4M 370V capacitor 34: Mounts on (3) P/N 0061-1518 Coleman Mounts

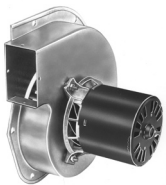


FIG. A A131



FIG. B A132

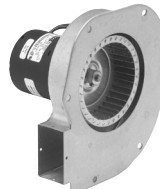


FIG. C A121



FIG. D A122



FIG. E A123



FIG. F A124



FIG. G A126



FIG. H D540, D541



FIG. I D1109



FIG. J D1107



FIG. K D824



FIG. L D342, D1036



FIG. M A142



| FASCO MODEL       | TYPE | DIA. | HP                    | VOLTS   | RPM       | SPD. | AMPS            | ROT. | BRNG. | SHAFT DIM.  | "A" DIM. | CROSS REF.                    | FIG. | NOTES |
|-------------------|------|------|-----------------------|---------|-----------|------|-----------------|------|-------|-------------|----------|-------------------------------|------|-------|
| <b>RHEEM/RUUD</b> |      |      |                       |         |           |      |                 |      |       |             |          |                               |      |       |
| A066              | SP   | -    | 1/30                  | 120     | 3000      | 1    | 1.27            | CW   | BALL  |             |          | 70-24157-03, 117847-00        | A    |       |
| A240              | SP   | 3.3  | 1/50                  | 115     | 3000      | 1    | 1.1             | CCW  | SLV   |             |          | 7021-8183, 70-21496-83        | B    |       |
| A241              | SP   | 3.3  | 1/25                  | 208-230 | 3200      | 1    | 0.62            | CW   | SLV   |             |          | 7021-9567, 70-23641-81        | C    |       |
| A242              | SP   | 3.3  | 1/50                  | 115     | 3400      | 1    | 1.36            | CW   | SLV   |             |          | 7021-7150, 70-22436-01        | D    |       |
| A243              | SP   | 3.3  | 1/50                  | 115     | 3400      | 1    | 1.36            | CW   | SLV   |             |          | 7021-7790, 70-22436-02        | E    |       |
| A244              | SP   | 3.3  | 1/20                  | 208-230 | 3300      | 1    | 0.85            | CCW  | BALL  |             |          | 7021-6967, 70-42241-01        | F    |       |
| A245              | SP   | 3.3  | 1/15                  | 208-230 | 3000      | 1    | .95/.85         | CW   | BALL  |             |          | 7021-7490, 70-42278-02        | G    |       |
| A246              | PSC  | 3.3  | 1/20                  | 115     | 3400/2400 | 2    | 0.85            | CW   | BALL  |             |          | 7062-3925, 70-24206-01        | H    |       |
| A247              | PSC  | 3.3  | 1/40                  | 115     | 3250/2800 | 2    | .95             | CW   | SLV   |             |          | 7062-5519                     | I    |       |
| D724              | PSC  | 5.6  | 3/4 - 1/2 - 1/3 - 1/4 | 115     | 1075      | 4    | 9.5-7.2-5.6-3.5 | REV  | SLV   | 1/2 X 6     | 5 3/4    | VARIOUS                       | J    |       |
| D806              | PSC  | 5.6  | 1/2 - 1/3 - 1/4 - 1/5 | 115     | 1075      | 4    | 7.3             | REV  | SLV   | 1/2 X 3 3/4 | 4 3/4    | 51-23012-41                   | J    |       |
| D2800             | PSC  | 5.6  | 1/2                   | 208/230 | 1075      | 1    | 2.9             | REV  | SLV   | 1/2 X 5     | 5        | K55HXMYC-4445, 51-23052-11    | K    | 36    |
| D2834             | PSC  | 5.6  | 1/3                   | 208/230 | 1075      | 1    | 2               | CW   | SLV   | 1/2 X 4 1/4 | 4        | 51-21853-83                   | L    |       |
| D2840             | PSC  | 5.6  | 1/5                   | 208/230 | 1075      | 1    | 1.3             | CW   | SLV   | 1/2 X 4 1/8 | 3 3/4    | 51-21853-82                   | L    |       |
| D2842             | PSC  | 5.6  | 1/6                   | 208/230 | 825       | 1    | 1.2             | CW   | SLV   | 1/2 X 4 1/4 | 4        | 51-20760-11                   | M    |       |
| D832              | PSC  | 5.6  | 1/8                   | 208-230 | 825       | 1    | 1.1             | REV  | SLV   | 1/2 X 4 3/4 | 4        | 21276-02, 21276-01, 512076-01 | N    |       |
| D2844             | PSC  | 5.6  | 1/10                  | 208/230 | 825       | 1    | 0.8             | CW   | SLV   | 1/2 X 4 1/4 | 3 3/4    | 51-20761-11                   | M    |       |

NOTES: 36: Has 4 drilled and tapped holes in shell



FIG. A A066



FIG. B A240

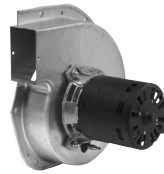


FIG. C A241



FIG. D A242



FIG. E A243



FIG. F A244



FIG. G A245



FIG. H A246



FIG. I A247



FIG. J D724, D806



FIG. K D2800



FIG. L D2834, D2840



FIG. M D2842, D2844

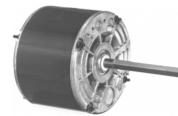
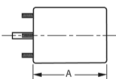


FIG. N D832



NEW ITEM! See page 113 for a complete listing of all our new products.

Thermally protected • UL recognized • CSA or ULc certified

NOTE: Rotation is determined by looking at shaft end. Shaft length is measured from motor face.



| FASCO MODEL            | TYPE | DIA. | HP                 | VOLTS   | RPM  | SPD. | AMPS    | ROT. | BRNG. | SHAFT DIM.           | "A" DIM. | CROSS REF.   | FIG. | NOTES |
|------------------------|------|------|--------------------|---------|------|------|---------|------|-------|----------------------|----------|--|------|-------|
| <b>REZNOR</b>          |      |      |                    |         |      |      |         |      |       |                      |          |  |      |       |
| D461                   | PSC  | 3.3  | 1/8                | 480     | 3200 | 1    | 0.32    | CCW  | SLV   | 5/16 X 3 1/3         | 4 1/4    | 7162-0396  | A    |       |
| <b>RHEEM/RUUD</b>      |      |      |                    |         |      |      |         |      |       |                      |          |  |      |       |
| D459                   | SP   | 3.3  | 1/15               | 230/460 | 3000 | 1    | 1.2-.6  | CW   | BALL  | 1/4 X 3              | 7        | HC24AU725A, JB1P044, AB1S078, JB1R039, AB1S029, S88-556  | B    |       |
| K628                   | SP   | -    | 1/200              | 208-230 | 3000 | 1    | 0.25    | CW   | SLV   | 1/4 X 1 1/2          | 5        | 51-21964-01, 7102-0628   | C    |       |
| A079                   | SP   | 3.3  | 1/50               | 115     | 3000 | 1    | 1.1     | CCW  | SLV   |                      |          | 74-70-21504-03-04, 74-70-21496-03-01, JAIM106, JAIM137, 7021-5615                              | D    |       |
| A086                   | SP   | 3.3  | 1/25               | 115     | 3200 | 1    | 1.3     | CW   | SLV   |                      |          | 7021-5990  | E    |       |
| A090                   | SP   | 3.3  | 1/50               | 115     | 3000 | 1    | 1.1     | CW   | SLV   |                      |          | RHEEM 70-21496-01, 7021-5239 JAIM102   | F    |       |
| A136                   | PSC  | 3.3  | 1/20               | 115     | 3450 | 1    | 0.75    | CW   | SLV   |                      |          | RHEEM, 7062-3861   | G    | 38    |
| A139                   | SP   | 3.3  | 1/55               | 115     | 3000 | 1    | 0.95    | CW   | SLV   |                      |          | RHEEM, 7021-7577   | H    |       |
| A142                   | PSC  | 3.3  | 1/20               | 115     | 3450 | 1    | 0.7     | CW   | SLV   |                      |          | RHEEM, 7062-1881   | I    | 39    |
| <b>SCHERBA IND.</b>    |      |      |                    |         |      |      |         |      |       |                      |          |  |      |       |
| A087                   | PSC  | 3.3  | 1/6                | 115/230 | 2400 | 1    | 2.8/1.1 | CCW  | SLV   |                      |          | 7062-4687, 7062-3496   | J    | 195   |
| <b>SEARS/WHIRLPOOL</b> |      |      |                    |         |      |      |         |      |       |                      |          |  |      |       |
| D137                   | SP   | 3.3  | 1/30 - 1/65        | 115     | 1500 | 1    | 1-.7    | DS   | SLV   | 3 X 5/16 X 3         | 2 7/8    | Rangehood  | K    |       |
| D1111                  | SP   | 3.3  | 1/18 - 1/30        | 115     | 1330 | 2    | 2.4-1.6 | CCW  | SLV   | 3 1/8 X 5/16 X 2 3/8 | 3 1/2    | JA2S094, JA2S110, JA2S121N, A456301 A495601, A495603, 5500 BTU Window A/C; G000519549; G519549 | L    |       |
| D323                   | PSC  | 3.3  | 1/15 - 1/20 - 1/35 | 115     | 1550 | 3    | 1-.8-.6 | DS   | SLV   | 2 3/4 X 5/16 X 2 3/4 | 3 3/4    | Small Window A/C   | M    | 9     |
| D325                   | SP   | 3.3  | 1/10 - 1/30        | 115     | 1550 | 2    | 2.5-2.3 | CCW  | SLV   | 1 3/4 X 5/16 X 2 3/8 | 3 1/2    | Small Window A/C   | N    | 18    |

NOTES: 9: 3M 370V capacitor 18: Rotation is determined by viewing lug end. 38: 4MFD, 370VAC capacitor rating (not included) 39: 4MFD, 370VAC capacitor rating (included) 195: 50/60 Hz



FIG. A D461



FIG. B D459

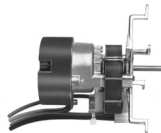


FIG. C K628

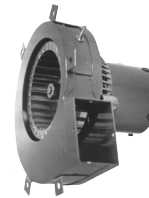


FIG. D A079



FIG. E A086



FIG. F A090



FIG. G A136



FIG. H A139



FIG. I A142



FIG. J A087



FIG. K D137



FIG. L D1111



FIG. M D323



FIG. N D325



| FASCO MODEL                   | TYPE | DIA. | HP                | VOLTS   | RPM  | SPD. | AMPS        | ROT. | BRNG. | SHAFT DIM.           | "A" DIM. | CROSS REF.   | FIG. | NOTES   |
|-------------------------------|------|------|-------------------|---------|------|------|-------------|------|-------|----------------------|----------|--|------|---------|
| <b>SEARS/WHIRLPOOL</b>        |      |      |                   |         |      |      |             |      |       |                      |          |  |      |         |
| D857                          | PSC  | 5.6  | 1/8 - 1/10 - 1/15 | 115     | 1100 | 3    | 1.7         | DS   | SLV   | 3 1/8 X 1/2 X 4 1/8  | 3 1/2    | Window A/C Using Delco Inside-Outside Motor 485932, KCP39PG9769S | A    |         |
| D859                          | PSC  | 5.6  | 1/3 - 1/5 - 1/8   | 230     | 1100 | 3    | 1.7-1.5-1.3 | DS   | SLV   | 4 1/4 X 1/2 X 5 1/4  | 4 1/4    |  | A    | 205     |
| D860                          | PSC  | 5.6  | 1/2 - 1/3 - 1/4   | 230     | 1075 | 3    | 3.2         | DS   | SLV   | 4 1/4 X 1/2 X 4 3/8  | 5 3/4    |  | B    | 13, 205 |
| <b>SINGER</b>                 |      |      |                   |         |      |      |             |      |       |                      |          |  |      |         |
| D1169                         | SP   | 3.3  | 1/10              | 208-230 | 3000 | 1    | 1.5         | CCW  | SLV   | 5/16 X 1             | 5 3/4    | FASCO 7121-4066 Comfor Maker 1708-507                            | C    |         |
| D1164                         | SP   | 3.3  | 1/25              | 115/230 | 1550 | 1    | 1.3-.65     | CW   | SLV   | 5/16 X 2 1/2         | 3 1/8    | JA2P091N, JA2P0901N  | D    |         |
| D1167                         | SP   | 3.3  | 1/40              | 208-230 | 3000 | 1    | 0.55        | CCW  | SLV   | 5/16 X 1             | 4 7/8    | 1708-518, 7121-5854  | E    |         |
| <b>SKYMARK</b>                |      |      |                   |         |      |      |             |      |       |                      |          |  |      |         |
| A251                          | SP   | 3.3  | 1/35              | 208-230 | 3000 | 1    | 1.1         | CCW  | SLV   |                      |          | 7021-9136, MTR-136PK   | F    |         |
| <b>TAPPAN</b>                 |      |      |                   |         |      |      |             |      |       |                      |          |  |      |         |
| A073                          | SP   | 3.3  | 1/40              | 115-230 | 3000 | 1    | .7/35       | CCW  | BALL  |                      |          | 82932, 8251560133  | G    |         |
| <b>TECUMSEH</b>               |      |      |                   |         |      |      |             |      |       |                      |          |  |      |         |
| D475                          | SP   | 3.3  | 1/15              | 460     | 1550 | 1    | 0.5         | CCW  | SLV   | 5/16 X 2 1/2         | 4 1/2    | Tecumseh 810G037A47, 5KCP11FG1197CS                              | H    |         |
| <b>TEMPMASTER/OTASCO</b>      |      |      |                   |         |      |      |             |      |       |                      |          |  |      |         |
| D1033                         | PSC  | 5    | 1/5 - 1/6 - 1/8   | 208-230 | 1400 | 3    | 1.6-1.5-1.3 | DS   | SLV   | 2-3/4 X 1/2 X 3 1/2  |          | M11730, 322P373, M12100, 322P454                                 | I    |         |
| <b>THERMADOR (TRADEWINDS)</b> |      |      |                   |         |      |      |             |      |       |                      |          |  |      |         |
| D1165                         | SP   | 3.3  | 1/20              | 115     | 1550 | 1    | 2           | DS   | SLV   | 3 1/2 X 5/16 X 3 1/2 |          | Tradewinds/Blower Motors   | J    |         |
| D1155                         | SP   | 3.3  | 1/100             | 115     | 1085 | 1    | 0.5         | CCW  | SLV   | 1/4 X 1              |          | 17-09-679, VQT-90, JA2M087R                                      | K    |         |
| <b>THERMAL TRANSFER</b>       |      |      |                   |         |      |      |             |      |       |                      |          |  |      |         |
| D1006                         | SP   | 4.4  | 1/4               | 115     | 1600 | 1    | 7.2         | CW   | SLV   | 1/2 X 2 3/4          |          | 7108-6544, 66098   | L    |         |
| <b>TJERNLUND</b>              |      |      |                   |         |      |      |             |      |       |                      |          |  |      |         |
| D130                          | SP   | 3.3  | 1/40              | 115     | 1500 | 1    | 1           | CW   | SLV   | 5/16 X 4 1/8         |          | 7163-6058  | M    |         |

NOTES: 13: 7.5M 370V Capacitor 205: Window A/C Using Delco Inside-Outside Motor 485932, KCP39PG9769S



FIG. A D857, D859



FIG. B D860



FIG. C D1169



FIG. D D1164



FIG. E D1167

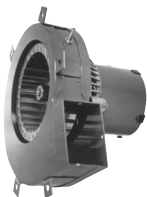


FIG. F A251



FIG. G A073



FIG. H D475



FIG. I D1033



FIG. J D1165



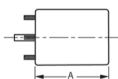
FIG. K D1155



FIG. L D1006



FIG. M D130



Thermally protected • UL recognized • CSA or ULc certified  
**NOTE:** Rotation is determined by looking at shaft end. Shaft length is measured from motor face.



| FASCO MODEL  | TYPE    | DIA. | HP    | VOLTS   | RPM       | SPD. | AMPS  | ROT. | BRNG. | CROSS REF.   | FIG. | NOTES |
|--------------|---------|------|-------|---------|-----------|------|-------|------|-------|--|------|-------|
| <b>TRANE</b> |         |      |       |         |           |      |       |      |       |  |      |       |
| A069         | SP      | 3.3  | 1/70  | 208-240 | 3000      | 1    | 0.5   | CCW  | SLV   | 38040252, 82252  | A    |       |
| A075         | SP      | 3.3  | 1/40  | 230     | 3000      | 1    | 0.4   | CCW  | BALL  | 38050005   | B    |       |
| A143         | SP      | 3.3  | 1/50  | 115     | 3000      | 1    | 0.95  | CW   | SLV   | 7021-8428, 7021-8013, 7021-8924                                    | C    |       |
| A146         | SP      | 3.3  | 1/100 | 115     | 3000      | 2    | 1-.35 | CW   | SLV   | 7021-7986, 7021-8925, 7002-2531                                    | D    |       |
| A130         | PSC     | 3.3  | 1/20  | 115     | 3450      | 1    | 0.7   | CW   | SLV   | 7062-3956, 7062-3616, 7062-5247, 7062-5575, D330757P04, D342094P04 | E    |       |
| A150         | SP      | 3.3  | 1/35  | 208-230 | 3000      | 1    | 0.5   | CCW  | SLV   | 7021-7833, 7021-8928   | F    |       |
| A191         | SP      | 3.3  | 1/15  | 208-230 | 3000      | 1    | 0.8   | CCW  | SLV   | 7021-6683, X38040251-01-7  | G    |       |
| A192         | SP      | 3.3  | 1/40  | 115     | 3000      | 1    | 1     | CCW  | BALL  | 7021-8569, X38040253057  | H    |       |
| A193         | SP      | 3.3  | 1/35  | 208-240 | 3480      | 1    | .59/5 | CCW  | BALL  | 7021-8591, X38040050-01-0  | I    |       |
| A194         | SP      | 3.3  | 1/80  | 115     | 3000/1950 | 2    | 1/5   | CW   | SLV   | 7021-9561, X38020420017  | J    |       |
| A195         | SP      | 3.3  | 1/16  | 115     | 3400      | 1    | 1.75  | CW   | BALL  | 7021-11543, X38040313070   | K    |       |
| A196         | SP      | 3.3  | 1/25  | 115     | 3200      | 1    | 1.35  | CW   | SLV   | 7021-11544, D342094P02, 7021-9010, D330757P02                      | L    |       |
| A197         | 3 PHASE | 3.3  | 1/70  | 33-110  | 1500-4700 | VAR. | 1     | CW   | BALL  | 7092-0238, D342097P01  | M    |       |



FIG. A A069



FIG. B A075



FIG. C A143



FIG. D A146



FIG. E A130



FIG. F A150



FIG. G A191



FIG. H A192



FIG. I A193



FIG. J A194



FIG. K A195



FIG. L A196



FIG. M A197





| FASCO MODEL  | TYPE | DIA. | HP    | VOLTS   | RPM       | SPD. | AMPS   | ROT. | BRNG. | CROSS REF.                                   | FIG. | NOTES |
|--------------|------|------|-------|---------|-----------|------|--------|------|-------|--|------|-------|
| <b>TRANE</b> |      |      |       |         |           |      |        |      |       |  |      |       |
| A198         | SP   | -    | 1/45  | 115     | 3000      | 1    | 1.75   | CW   | BALL  | 7058-0259, D342077P01                        | A    |       |
| A199         | SP   | -    | 1/45  | 115     | 3000      | 1    | 1.75   | CW   | BALL  | 7058-0260, D342077P02                        | A    |       |
| A260         | SP   | -    | 1/45  | 115     | 3250      | 1    | 1      | CW   | BALL  | 7058-0261, D342077P03                        | A    |       |
| A261         | SP   | -    | 1/45  | 115     | 3250      | 1    | 1      | CW   | BALL  | 7058-0262, D342077P04                        | A    |       |
| A262         | SP   | -    | 1/45  | 115     | 3250      | 1    | 1      | CW   | BALL  | 7058-0263, D34077P05                         | A    |       |
| A263         | SP   | -    | 1/45  | 115     | 3250      | 1    | 1      | CW   | BALL  | 7058-0264, D34077P06                         | A    |       |
| A264         | SP   | -    | 1/120 | 115     | 3000      | 2    | 0.75   | CW   | BALL  | 7002-3443, D342078P01                        | A    |       |
| A265         | SP   | -    | 1/125 | 115     | 3000      | 2    | 0.75   | CW   | BALL  | 7002-3444, D342078P02                        | A    |       |
| A266         | SP   | -    | 1/125 | 115     | 3000      | 2    | 1      | CW   | BALL  | 7002-3445, D342078P04                        | A    |       |
| A267         | SP   | -    | 1/125 | 115     | 3000      | 2    | 1.4    | CW   | BALL  | 7002-3446, D342078P05                        | A    |       |
| A268         | SP   | -    | 1/45  | 115     | 3000      | 2    | 1.4    | CW   | BALL  | 7002-3447, D342078P06                        | A    |       |
| A269         | SP   | 3.3  | 1/35  | 208-230 | 2500/3000 | 1    | .58/6  | CCW  | BALL  | 7021-11054, X38040363010                     | B    | 195   |
| A270         | PSC  | 3.3  | 1/15  | 208-230 | 3350/2800 | 2    | .42/50 | CCW  | BALL  | 7062-5033, X38040369010                      | C    | 195   |
| A271         | PSC  | 3.3  | 1/18  | 208-230 | 3500      | 2    | 0.62   | CW   | BALL  | 7062-3969, X38040308-01                      | D    | 195   |
| A272         | PSC  | 3.3  | 1/12  | 208-230 | 3500      | 2    | 0.65   | CW   | BALL  | 7062-3971, X38040309-01                      | D    | 195   |
| A273         | PSC  | 3.3  | 1/8   | 208-230 | 3500      | 2    | 0.62   | CW   | BALL  | 7062-3972, X38040310-01                      | D    | 195   |
| A274         | PSC  | 3.3  | 1/24  | 208-230 | 3500      | 1    | .28    | CW   | BALL  | 7062-3973, X38040311-01                      | D    | 195   |
| A276         | SP   | 3.3  | 1/55  | 115     | 3000      | 1    | 1      | CW   | SLV   | 7021-9011, D330757P01                        | E    |       |
| A278         | SP   | -    | 1/50  | 115     | 3000      | 2    | 1.4    | CW   | BALL  | 7002-2530, D341095P02                        | F    |       |
| A279         | SP   | -    | 1/125 | 115     | 3000      | 2    | 0.75   | CW   | BALL  | 7002-2531, D341095P04, 7002-3275, D341663P04 | F    |       |

NOTES: 195: 50/60 Hz



FIG. A A198, A199, A260, A261, A262, A263, A264, A265, A266, A267, A268

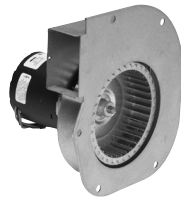


FIG. B A269

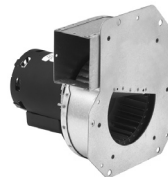


FIG. C A270



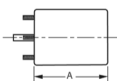
FIG. D A271, A272, A273, A274



FIG. E A276



FIG. F A278, A279



Thermally protected • UL recognized • CSA or ULc certified  
**NOTE:** Rotation is determined by looking at shaft end. Shaft length is measured from motor face.

NEW ITEM! See page 113 for a complete listing of all our new products.



| FASCO MODEL  | TYPE | DIA. | HP                 | VOLTS   | RPM        | SPD. | AMPS     | ROT. | BRNG. | SHAFT DIM.            | CROSS REF.   | FIG. | NOTES |
|--------------|------|------|--------------------|---|------------|------|----------|------|-------|-----------------------|--|------|-------|
| <b>TRANE</b> |      |      |                    |   |            |      |          |      |       |                       |  |      |       |
| A360         | SP   | -    | 1/25               | 115   | 2700       | 2    | 1        | CW   | BALL  |                       | 7002-2532, D341095P01, 7002-3274, D341663P01   | A    |       |
| A361         | SP   | -    | 1/42               | 115   | 3000       | 1    | 1.6      | CW   | BALL  |                       | 7002-2558, D330787P01  | B    |       |
| A362         | SP   | -    | 1/42               | 115   | 3000       | 1    | 1.6      | CW   | BALL  |                       | 7002-3273, D341663P05  | A    |       |
| A367         | SP   | 3.3  | 1/60               | 115   | 3000       | 2    | .95      | CW   | SLV   |                       | 7021-8051, 21D340096P02  | C    |       |
| A368         | PSC  | 3.3  | 1/20               | 115   | 3200       | 2    | 0.8      | CW   | SLV   |                       | 7062-3782, D340623P01  | D    |       |
| A369         | PSC  | 3.3  | 1/45               | 208-230                                       | 2800       | 2    | .34      | CCW  | BALL  |                       | 7062-3915, C663946P01  | E    |       |
| A370         | PSC  | 3.3  | 1/100              | 208-230                                       | 2920       | 2    | 0.18     | CCW  | BALL  |                       | 7062-3918, C664099P01  | E    |       |
| A373         | SP   | 3.3  | 1/35               | 280-230                                       | 3000       | 1    | 0.6      | CCW  | BALL  |                       | 7021-9396, C665662P01  | F    |       |
| D1050        | PSC  | 5    | 1/8                | 230   | 1550       | 1    | 1.1      | CW   | SLV   | 1/2 X 3               | WW94X236SP, WW94X936PSC  | G    | 199   |
| D895         | PSC  | 5.6  | 1/8                | 208-230                                       | 1650       | 1    | 0.8      | CW   | SLV   | 1/2 X 1 1/2           | 5KCP39BGR426S, MOT 6363  | H    | 1     |
| D1005        | PSC  | 5    | 1/10               | 460   | 1075       | 2    | 0.5      | DS   | SLV   | 9 5/8 X 1/2 X 9 5/8   | 5KCP29DK3857BT, MOT 4590   | I    |       |
| D1089        | PSC  | 5    | 1/15               | 115   | 850        | 3    | 1.3      | REV  | SLV   | 1/2 X 3               | 5KCP39DGM458AS, K48HX-CFC-1327, MOT3589, MOT 3591, FASCO 7176-3020                             | J    | 1     |
| D1090        | PSC  | 5    | 1/15               | 115   | 1100       | 3    | 0.8      | CW   | SLV   | 10 1/2 X 1/2 X 11 1/2 | MOT1877, K48HXBLA-956  | K    |       |
| D1051        | PSC  | 5    | 1/25 - 1/40        | 115   | 1060 - 500 | 2    | .6-.4    | DS   | SLV   | 11 1/8 X 1/2 X 11 1/8 | FAN COIL   | L    | 3     |
| D1058        | PSC  | 5    | 1/20 - 1/30 - 1/40 | 265   | 1100       | 3    | .5-.3-.2 | CW   | SLV   | 1/2 X 2 1/2           | 5 KCP29FK885S  | M    | 1     |
| D2850        | PSC  | 5.6  | 1 - 3/4            | 208-230/460<br>60 HZ,<br>200/380-415<br>50 HZ | 1125/950   | 1    | 4.6/2.3  | CW   | BALL  | 1/2 X 3.45            | 5KCP39SFL153DS (GE);<br>MOT05717<br>Trane X70671180017,<br>X70670706010,<br>MOT03771, MOT05717 | N    | 20    |

NOTES: 1: 4M 370V capacitor 3: 6M 370V capacitor 20: Not a direct replacement, but suitable for referenced models. 199: Original motor is SP, D1050 is PSC to provide greater motor efficiency and permit closing shaft end of motor to prevent moisture from entering motor



FIG. A A360, A362



FIG. B A361



FIG. C A367



FIG. D A368



FIG. E A369, A370



FIG. F A373



FIG. G D1050



FIG. H D895



FIG. I D1005



FIG. J D1089



FIG. K D1090



FIG. L D1051



FIG. M D1058



FIG. N D2850



| FASCO MODEL                          | TYPE | DIA. | HP                       | VOLTS   | RPM      | SPD. | AMPS     | ROT. | BRNG. | SHAFT DIM.                 | "A" DIM. | CROSS REF.  | FIG. | NOTES |
|--------------------------------------|------|------|--------------------------|---|----------|------|----------|------|-------|----------------------------|----------|---|------|-------|
| <b>20TH CENTURY</b>                  |      |      |                          |   |          |      |          |      |       |                            |          |   |      |       |
| A086                                 | SP   | 3.3  | 1/25                     | 115   | 3200     | 1    | 1.3      | CW   | SLV   |                            |          | 7021-5853   | A    |       |
| <b>TRANE</b>                         |      |      |                          |   |          |      |          |      |       |                            |          |   |      |       |
| D2851                                | PSC  | 5.6  | 1 - 3/4                  | 208-230/460<br>60 HZ,<br>200/380-415<br>50 HZ | 1125/950 | 1    | 4.6/2.3  | CW   | BALL  | 5/8 X 3.75<br>Keyed        | 6 1/2    | 5KCP39SFL153DS (GE);<br>MOT09188<br>MOT09188, MOT09192,<br>Trane X7067165301<br>X70671656010                              | B    |       |
| <b>TYLER</b>                         |      |      |                          |   |          |      |          |      |       |                            |          |   |      |       |
| D870                                 | PSC  | 5.6  | 1/4                      | 230   | 1625     | 1    | 1.9      | CW   | BALL  | 1/2 X 3                    | 4 3/4    | 5KCP39EGC053T,<br>UNIT NO. 760  | C    | 29    |
| <b>WEIL MCLAIN</b>                   |      |      |                          |   |          |      |          |      |       |                            |          |   |      |       |
| D1190                                | SP   | 3.3  | 1/30                     | 115   | 3000     | 1    | 1.6      | CW   | SLV   | 5/16 X 1<br>3/4            | 4 7/8    | 7121-5750, JA1N074  | D    |       |
| <b>WEST BEND/MCGRAW EDISON</b>       |      |      |                          |   |          |      |          |      |       |                            |          |   |      |       |
| D1134                                | SP   | 3.3  | 1/50<br>- 1/65 -<br>1/80 | 115   | 1500     | 3    | 1.1-8-.6 | CW   | SLV   | 1/4 X 1 3/4                | 2 1/4    | Portable Humidifier Motors  | E    |       |
| <b>WESTINGHOUSE</b>                  |      |      |                          |   |          |      |          |      |       |                            |          |   |      |       |
| D262                                 | PSC  | 5    | 1/5                      | 230   | 925      | 1    | 2.3      | REV  | SLV   | 1/2 X 4                    | 3 7/8    | Whisperaire 319P300A  | F    |       |
| D1032                                | PSC  | 5    | 1/5                      | 208-230                                       | 1550     | 1    | 1.6      | DS   | SLV   | 6 1/4 X 1/2<br>X 6 1/4     | 3 7/8    | Model No. 319P367A  | G    |       |
| D1111                                | SP   | 3.3  | 1/18 -<br>1/30           | 115   | 1330     | 2    | 2.4-1.6  | CCW  | SLV   | 3 1/8 X<br>5/16 X 2<br>3/8 | 3 1/2    | JA2S094, JA2S110,<br>JA2S121N, A456301<br>A495601, A495603,<br>5308013815, 5500 BTU<br>WINDOW A/C; G000519549;<br>G519549 | H    |       |
| <b>WHITE CONSOLIDATED INDUSTRIES</b> |      |      |                          |   |          |      |          |      |       |                            |          |   |      |       |
| D1111                                | SP   | 3.3  | 1/18 -<br>1/30           | 115   | 1330     | 2    | 2.4-1.6  | CCW  | SLV   | 3 1/8 X<br>5/16 X 2<br>3/8 | 3 1/2    | JA2S094, JA2S110,<br>JA2S121N, A456301<br>A495601, A495603,<br>5308013815, 5500 BTU<br>WINDOW A/C                         | H    |       |
| <b>WITT</b>                          |      |      |                          |   |          |      |          |      |       |                            |          |   |      |       |
| D1102                                | PSC  | 3.3  | 1/20                     | 115/230                                       | 1550     | 1    | .75-.4   | CW   | SLV   | 5/16 X<br>2-5/8            | 3 1/2    | 7190-2158, 8216073, 7190-<br>2159, 8216074  | I    |       |

NOTES: 29: 4M 370V capacitor included



FIG. A **A086**



FIG. B **D2851**



FIG. C **D870**



FIG. D **D1190**



FIG. E **D1134**



FIG. F **D262**



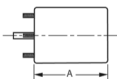
FIG. G **D1032**



FIG. H **D1111**



FIG. I **D1102**



Thermally protected • UL recognized • CSA or ULc certified  
**NOTE:** Rotation is determined by looking at shaft end. Shaft length is measured from motor face.

NEW ITEM! See page 113 for a complete listing of all our new products.



| FASCO MODEL       | TYPE | DIA. | HP            | VOLTS   | RPM  | SPD. | AMPS        | ROT. | BRNG. | SHAFT DIM.          | CROSS REF.   | FIG. | NOTES       |
|-------------------|------|------|---------------|---------|------|------|-------------|------|-------|---------------------|--|------|-------------|
| <b>WILLIAMSON</b> |      |      |               |         |      |      |             |      |       |                     |  |      |             |
| A080              | SP   | 3.3  | 1/45          | 115     | 3000 | 1    | 1.1         | CW   | SLV   |                     | 7021-5510, 02-568  | A    |             |
| A118              | SP   | 3.3  | 1/15          | 115     | 3000 | 1    | 1.8         | CW   | SLV   |                     | 100,000 BTU Furnace 7021-6999, 7021-7042, Leads must be modified | B    |             |
| <b>YORK</b>       |      |      |               |         |      |      |             |      |       |                     |  |      |             |
| D1191             | SP   | 3.3  | 1/40          | 460     | 3200 | 1    | 0.37        | CCW  | BALL  | 1/4 X 2-1/2         | 7121-7255  | C    | 33, 41, 131 |
| D1171             | SP   | 3.3  | 1/15          | 460     | 3000 | 1    | 0.6         | CCW  | BALL  | 1/4 X 2-1/2         | 024-24115-004 F33HXJBB3621                                       | D    | 41          |
| D1042             | PSC  | 5    | 1/5           | 208-230 | 1075 | 1    | 1.2         | DS   | SLV   | 6 1/2 X 1/2 X 6 1/2 | Cond. Fan, D1041 F47HXBGM-927                                    | E    |             |
| D873              | PSC  | 5.6  | 1/2           | 230     | 1050 | 1    | 3.2         | DS   | SLV   | 9 3/4 X 1/2 X 9 3/4 | K44HXJAF-4955  | F    |             |
| D2871             | PSC  | 5.6  | 1 - 3/4 - 1/2 | 460     | 1100 | 3    | 3.3-2.3-1.9 | REV  | SLV   | 1/2 X 3 1/2         | 024-21673, K55HXJFJ-2832, 5KCP39SGH913BS                         | G    | 42, 198     |
| A063              | SP   | 3.3  | 1/56          | 230     | 3000 | 1    | 0.6         | CCW  | BALL  |                     | 26-22239   | H    |             |
| A083              | SP   | 3.3  | 1/60          | 230     | 3000 | 1    | 0.8         | CCW  | BALL  |                     | 026-16323-0000, 026-20224-000, 7021-1373                         | I    |             |
| A144              | SP   | 3.3  | 1/40          | 208-230 | 3000 | 1    | 0.5         | CW   | SLV   |                     | 7021-6770  | J    | 41          |
| A137              | PSC  | 3.3  | 1/25          | 115     | 3450 | 1    | 0.7         | CW   | SLV   |                     | 7062-2442, 7062-3342, 7062-3484                                  | K    |             |
| A154              | SP   | 3.3  | 1/30          | 115     | 3000 | 1    | 1.2         | CW   | SLV   |                     | 7021-9428  | L    |             |
| A165              | PSC  | 3.3  | 1/25          | 115     | 3450 | 1    | 0.7         | CW   | BALL  |                     | 7062-3958  | M    |             |
| A168              | PSC  | 3.3  | 1/20          | 115     | 3450 | 1    | 0.7         | CW   | BALL  |                     | 7062-5019  | N    |             |

NOTES: 33: Stainless steel shaft 41: Includes centrifugal switch 42: 25M 370V Capacitor 131: Motors include shaft bushing 198: Has special OEM wiring configuration. Not for general purpose 3 speed applications



FIG. A **A080**



FIG. B **A118**



FIG. C **D1191**



FIG. D **D1171**



FIG. E **D1042**



FIG. F **D873**



FIG. G **D2871**



FIG. H **A063**



FIG. I **A083**



FIG. J **A144**



FIG. K **A137**



FIG. L **A154**



FIG. M **A165**



FIG. N **A168**



| FASCO MODEL | TYPE | DIA. | HP   | VOLTS   | RPM  | SPD. | AMPS | ROT. | BRNG. | CROSS REF.                                     | FIG. | NOTES |
|-------------|------|------|------|---------|------|------|------|------|-------|--|------|-------|
| <b>YORK</b> |      |      |      |         |      |      |      |      |       |  |      |       |
| A220        | SP   | 3.3  | 1/20 | 115     | 3000 | 1    | 1.6  | CW   | BALL  | 7021-5838, 026-27510-700, 7021-7217, 7021-9054 | A    |       |
| A221        | SP   | 3.3  | 1/40 | 208-230 | 3000 | 1    | 0.55 | CCW  | SLV   | 7021-8318, 026-30614-700, 7021-6991            | B    |       |
| A222        | SP   | 3.3  | 1/35 | 115     | 3000 | 1    | 1.05 | CCW  | BALL  | 7021-8317, 026-32067-700, 7021-7481            | C    |       |
| A223        | SP   | 3.3  | 1/30 | 208-230 | 3200 | 1    | 0.64 | CW   | SLV   | 7021-10096, 026-33999-001, 7021-9656           | D    |       |
| A224        | SP   | 3.3  | 1/18 | 115     | 3450 | 2    | 0.8  | CW   | SLV   | 7062-5048, 024-27654-000, 7062-4743            | E    |       |
| A225        | SP   | 3.3  | 1/15 | 115     | 3200 | 1    | 2.25 | CW   | BALL  | 7021-11577, 17503, 7021-11830, 024-34558-000   | F    |       |
| A226        | SP   | -    | 1/35 | 115     | 3000 | 1    | 1.7  | CW   | BALL  | 7058-0266, 7058-0266S                          | G    |       |
| A227        | PSC  | 3.3  | 1/25 | 115     | 3450 | 1    | 0.7  | CW   | SLV   | 7062-4708S, 024-27641-000, 17450, 7062-4708    | H    |       |
| A228        | SP   | -    | 1/25 | 115     | 3000 | 1    | 2    | CW   | BALL  | 7002-3285, 024-31957-000, 7002-2941            | I    |       |
| A229        | SP   | -    | 1/25 | 115     | 3000 | 1    | 1.75 | CW   | BALL  | 7058-0267S, 17499, 7058-0267                   | J    |       |
| A230        | PSC  | 3.3  | 1/20 | 115     | 3450 | 2    | 0.8  | CW   | SLV   | 7062-5094S, 17476, 7062-5094                   | K    |       |
| A231        | SP   | 3.3  | 1/75 | 115     | 3000 | 2    | 1.3  | CW   | SLV   | 7021-10213, 17452                              | L    |       |
| A234        | PSC  | 3.3  | 1/12 | 208-230 | 3200 | 1    | 0.5  | CW   | BALL  | 7062-5155, 102529                              | M    |       |



FIG. A A220



FIG. B A221



FIG. C A222

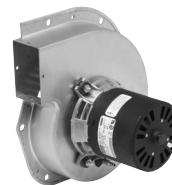


FIG. D A223



FIG. E A224



FIG. F A225

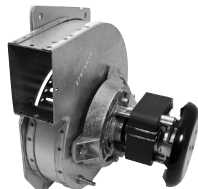


FIG. G A226



FIG. H A227



FIG. I A228



FIG. J A229



FIG. K A230



FIG. L A231



FIG. M A234



Thermally protected • UL recognized • CSA or ULc certified  
**NOTE:** Rotation is determined by looking at shaft end. Shaft length is measured from motor face.