

**TELEX.**

**MODEL 2480**

200 mW

802.11b Wireless Ethernet Access Point

Default IP: 192.168.1.90

FCC ID: B5D-AP200MW

Telex Communications, Inc.

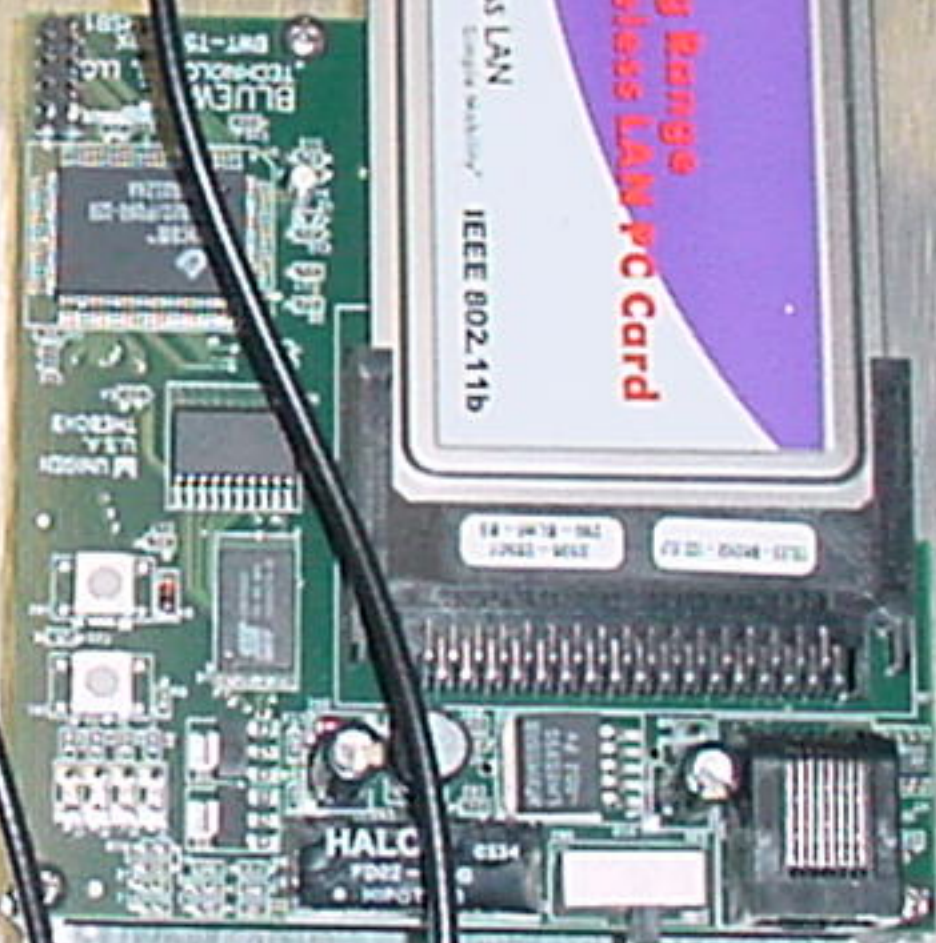
8601 East Cornhusker Hwy.

Lincoln, NE 68505

This device complies with Part 15 of the FCC Rules. Operation is subject to the following two conditions: (1) this device may not cause harmful interference, and (2) this device must accept any interference received, including interference that may cause undesired operation.

MAC ADDRESS:

Wireless LAN  
Long Range  
Wireless LAN PC Card  
IEEE 802.11b











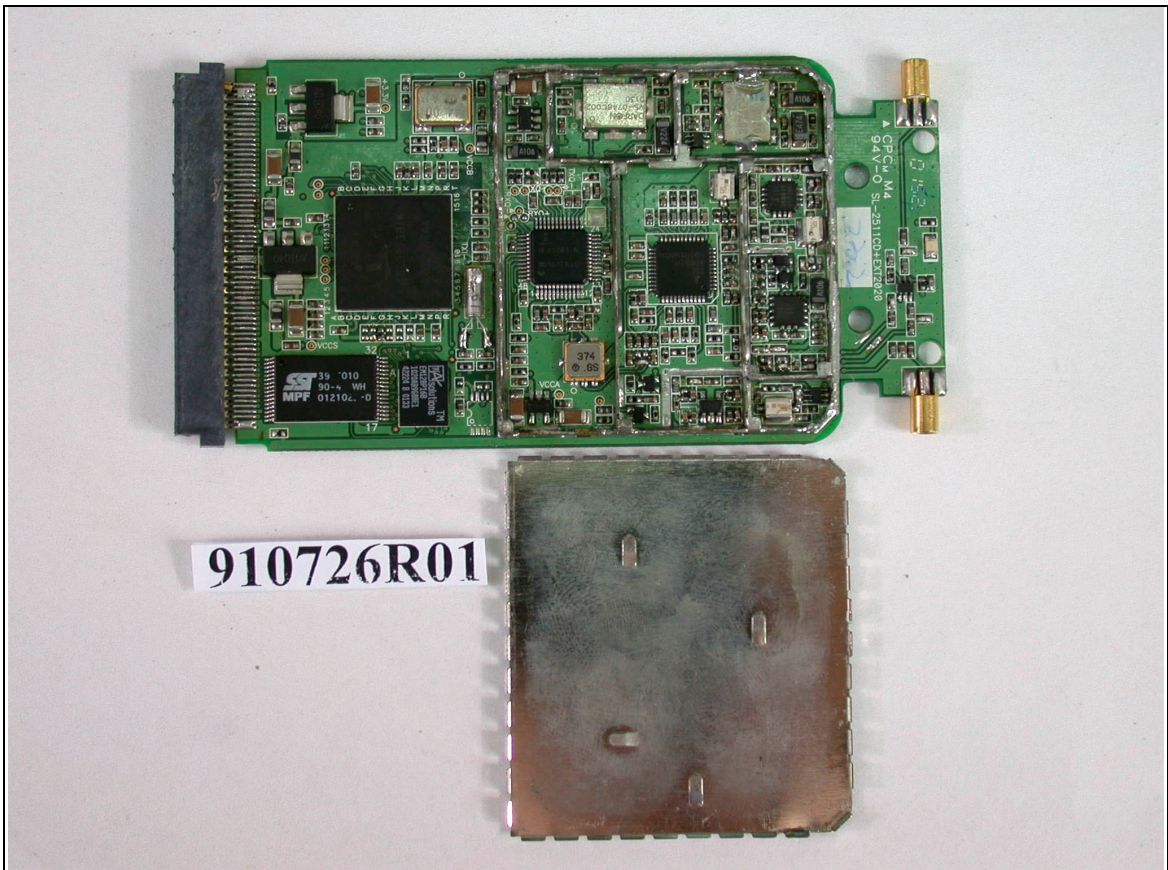
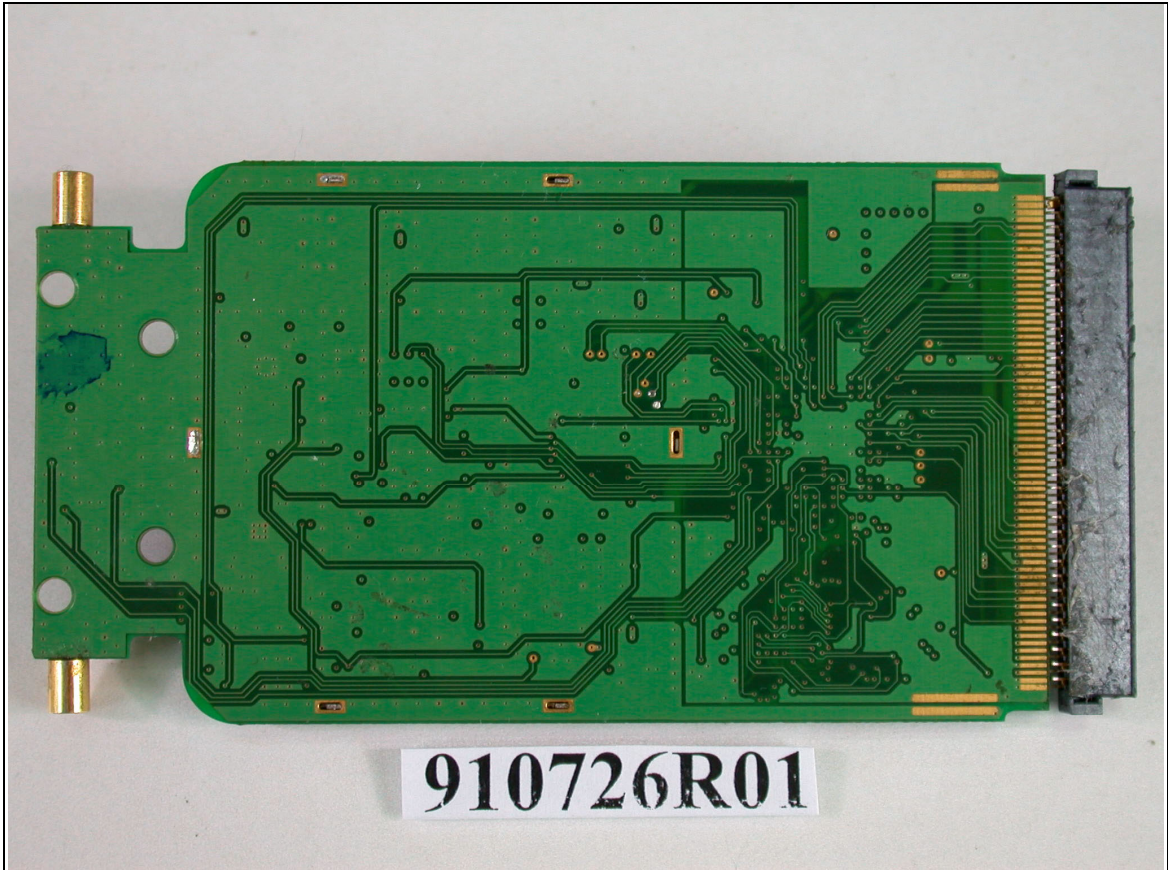




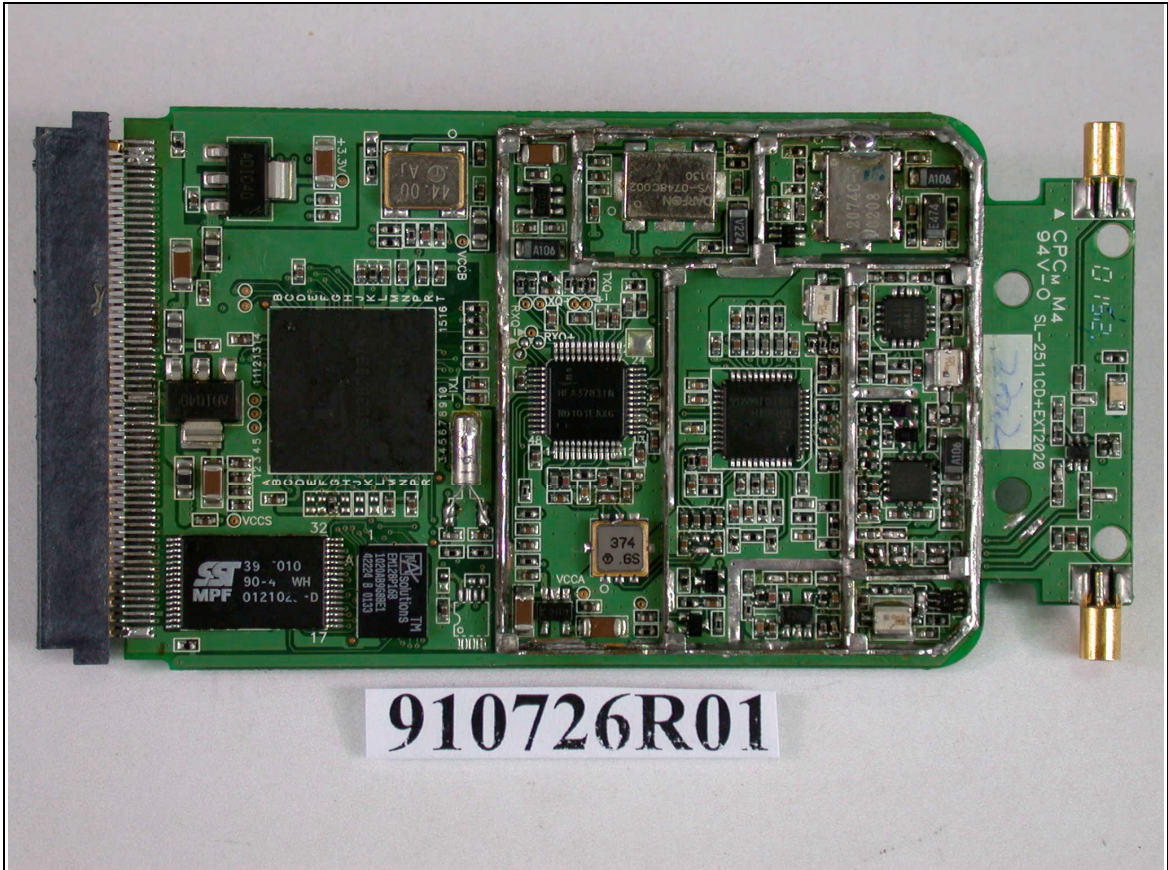












910726R01