

Smarter  
technology  
for all

Lenovo

# HOLLY JOLLY

From 15 November - 31 December 2023

**FREE GIFT**  
WORTH UP TO **RM1,328**

Lenovo L15 mobile  
monitor\*\* worth  
**RM799**

(\*\*Available for selected model only)



Office Home & Student  
worth **RM529**



**SAVE UP TO RM600**



\*Terms and conditions apply

Intel® Core™ i9 Processor



# Lenovo YOGA

## Lenovo Yoga Book 9i (13")

# The Book of limitless possibilities

Say hello to the world's first 13.3" laptop with dual full-sized OLED screens, casting spellbinding audio-visuals, unprecedented performance, and ultimate versatility.



Dual  
**PURESIGHT**  
LE  
displays

Up to  
**13<sup>th</sup> Gen**  
Intel® Core™ i7 Processors

**360°**  
hinge for  
multiple  
modes



Quad  
Bowers & Wilkins  
speakers with  
**Dolby**  
ATMOS

Weights  
from  
**1.34kg**

Measures  
from  
**15.95mm**



**Carbon  
neutral**  
with sustainable  
materials



### Plays well with others



#### Bluetooth® Keyboard

Smooth, comfortable typing experience to crush everyday tasks. Works remotely via Bluetooth® or attach it magnetically.



#### Folio Stand

Ideal for hands-free viewing. Keeps all your accessories safe and you on the move.

#### Digital Pen 3

Writes so intuitively and naturally, just like pen to paper.



Intel® Evo™ platform  
powered by Intel® Core™ i7 processor

Make the everyday easier with Windows 11



360° hinge  
for multiple  
modes



 **Dolby**  
ATMOS



Carries like  
a book

## It's a real page turner



Book



Tent



Laptop



Scroll

### Book. Laptop. Tent. Scroll.

Name it and there's a mode for you. It's multitasking, but better.

Lenovo Yoga Book 9i OLED (14", Gen 8)	
MODEL	82YQ001HMJ Tidal Teal <b>NEW</b>
PROCESSOR	Intel® Core™ i7-1355U Processor
DISPLAY	Dual 13.3" Screen 2.8K OLED 400nits Glossy / Anti-fingerprint, 100% DCI-P3, DisplayHDR™ True Black 500, Dolby® Vision™, Eyesafe®, Touch
GRAPHIC	Integrated Intel® Iris® Xe Graphics
MEMORY / STORAGE	16GB LPDDR5X - 6400MHz / 1TB SSD M.2 2242 PCIe® NVMe®
PRICE	<b>RM9,499</b>
WARRANTY	3 Years Onsite Premium Care Warranty worth up to RM933
FREE GIFTS	Office Home & Student 2021 included worth RM529

# Lenovo YOGA

## Lenovo Slim 7i Pro X

### The power to create wherever you are



Intel® Core™ i7 processor

With Lenovo  
**AI Engine+**



Realize your creative visions with the Yoga Slim 7 Pro X, delivering massive power, ray-traced visuals, and Lenovo AI Engine+ with AI Core. Thanks to the all-new Lenovo X Power, you can create in undisturbed peace.



### Form that encapsulates clever comfort

The precision-machined laptop with an aerospace-grade aluminum chassis features a humanized comfort edge design for more natural grips.

Ultra-thin from  
**15.9mm**

Ultra-light from  
**1.45kg**



	Lenovo Yoga Slim 7i Pro (14", Gen 7)	Lenovo Yoga Slim 7i Pro (14", Gen 8) <b>NEW</b>	Lenovo Yoga 7i (14", Gen 8) <b>NEW</b>
MODEL	82UT003SMJ <span>Cloud Grey</span>	82Y70099MJ <span>Tidal Teal</span>	82YL009DMJ <span>Storm Grey</span>
PROCESSOR	Intel® Core™ i7-12700H Processor	Intel® Core™ i7-13700H Processor	Intel® Core™ i7-1360P Processor
DISPLAY	14" 2.8K IPS 400nits Anti-glare, 100% sRGB, 90Hz, Eyesafe®, Dolby® Vision™	14.5" 3K IPS 400nits Anti-glare, 100% DCI-P3, 120Hz, Eyesafe®, Dolby® Vision™, TCON	14" WUXGA OLED 400nits Glossy, 100% DCI-P3, 60Hz, Dolby® Vision™, TÜV Low Blue Light, DisplayHDR™ True Black 500, Glass, Touch
GRAPHIC	NVIDIA® GeForce MX550 2GB GDDR6	NVIDIA® GeForce RTX™ 4050 (6GB GDDR6)	Integrated Intel® Iris® Xe Graphics
MEMORY / STORAGE	16GB LPDDR5, 512GB SSD M.2 2280 PCIe®	16GB LPDDR5, 512GB SSD M.2 2280 PCIe® NVMe®	16GB LPDDR5, 1TB SSD M.2 2242 PCIe®
PRICE	<b>RM5,499</b>	<b>RM6,499</b>	<b>RM5,199</b>
WARRANTY	3 Years Onsite Premium Care Warranty worth up to RM933		
FREE GIFTS	Office Home & Student included worth RM529		

Make the everyday easier with Windows 11

## Horsepower meets brainpower

Elevate your user experience with smarter and intuitive features, thanks to Lenovo AI Engine+ with AI Core.



### Smart Sense

Access seamlessly via the **FHD IR camera** with zero-touch **Smart Login** and start quicker with **Flip-to-Boot** by lifting the display.



### Smart Noise Cancelling

Enjoy crystal-clear video calls with amplified 20dB speech and suppressed noise.



### Smart Presence Detection

Protect your screen from prying eyes with the TOF (time of flight) sensor.



### Color Ambient Light Sensor

Type non-stop with automatic keyboard backlight.



### Smart Appearance

Always look good with enhanced lighting, eye gaze correction, and Face Framing.



### Smart Security

Your security is ensured with BIOS Self-Healing and the electronic privacy shutter.



### Smart Power

Press **Fn+Q** keys to switch between **Extreme Performance**, **Battery Saving**, and **Intelligent** modes.



	Lenovo Yoga Slim 7 Carbon (14", Gen 6)	Lenovo Yoga 6 (13", Gen 6)	Lenovo Yoga 6 (13", Gen 7)	Lenovo Yoga 6 (13", Gen 8) <b>NEW</b>
MODEL	82L00060MJ Cloud Grey	82ND003LMJ Abyss Blue	82UD001DMJ Fabric Dark Teal	83B2001KMJ Fabric Dark Teal
PROCESSOR	AMD Ryzen™ 7 5800U Processor	AMD Ryzen™ 5 5500U Processor	AMD Ryzen™ 5 5500U Processor	AMD Ryzen™ 7 7730U Processor
DISPLAY	14" 2.8K OLED 400nits Glossy, 100% DCI-P3, 90Hz, Eyesafe®, Dolby® Vision™, DisplayHDR™ True Black 500, Panda King Glass	13.3" FHD IPS 300nits Glossy, 72% NTSC, Touch	13.3" WUXGA IPS 300nits Glossy, 100% sRGB, Dolby® Vision™, TÜV Low Blue Light, Touch	13.3" WUXGA IPS 300nits Glossy, 100% sRGB, Dolby® Vision™, TÜV Low Blue Light, Touch
GRAPHIC	NVIDIA® GeForce MX450 2GB GDDR6	Integrated AMD Radeon™ Graphics	Integrated AMD Radeon™ Graphics	Integrated AMD Radeon™ Graphics
MEMORY / STORAGE	16GB LPDDR4X, 512GB SSD M.2 2280 PCIe® NVMe®	8GB DDR4, 512GB SSD M.2 2242 PCIe®	8GB LPDDR4x, 512GB SSD 2242 M.2 PCIe® NVMe®	16GB LPDDR4x, 1TB SSD 2242 M.2 PCIe® NVMe®
PRICE	<b>RM4,099</b>	<b>RM3,299</b>	<b>RM3,599</b>	<b>RM4,899</b>
WARRANTY	3 Years Onsite Premium Care Warranty worth up to RM933	2 Years Onsite Premium Care Warranty worth up to RM519	3 Years Onsite Premium Care Warranty worth up to RM933	
FREE GIFTS	• Office Home & Student 2021 included worth RM529 • Lenovo L15 mobile monitor worth RM799	Office Home & Student 2019 included worth RM529	Office Home & Student 2021 included worth RM529	

Lenovo  
**LEGION**

 **Windows 11**

Easier to play

# Lenovo Legion Pro 7i

## Unlimited power



Intel® Core™ i9  
processor

	Lenovo Legion Pro 7i (16", Gen 8) <b>NEW</b>		Lenovo Legion 5i (15", Gen 6)
MODEL	82WQ00B7MJ 	82WQ00B8MJ 	82JK00LJMJ 
PROCESSOR	Intel® Core™ i9-13900HX Processor		Intel® Core™ i5-11400H Processor
DISPLAY	16" WQXGA IPS 500nits Anti-glare, 100% sRGB, 240Hz, DisplayHDR™ 400, Dolby® Vision™, G-SYNC®, Low Blue Light, High Gaming Performance	16" WQXGA IPS 500nits Anti-glare, 100% sRGB, 240Hz, DisplayHDR™ 400, Dolby® Vision™, G-SYNC®, Low Blue Light, High Gaming Performance	15.6" FHD IPS 300nits Anti-glare, 100% sRGB, 165Hz, Dolby® Vision™, G-SYNC®
GRAPHIC	NVIDIA® GeForce RTX™ 4080 12GB GDDR6		NVIDIA® GeForce RTX™ 3050 4GB GDDR6
MEMORY / STORAGE	32GB DDR5 / 1TB SSD M.2 2280 PCIe*	32GB DDR5 / 1TB SSD M.2 2280 PCIe*	8GB DDR4 / 512GB SSD M.2 2280 PCIe*
PRICE	<b>RM12,599</b>		<b>RM3,949</b>
WARRANTY	2 Years Legion Ultimate Support worth up to RM650		2 Years Legion Ultimate Support worth up to RM650
FREE GIFTS	Lenovo Legion Armoured Backpack		Lenovo Legion Armoured Backpack

	Lenovo Legion Pro 5i (16", Gen 8) <b>NEW</b>		
MODEL	82WK00E8MJ 	82WK00FUMJ 	82WK00JDMJ 
PROCESSOR	Intel® Core™ i7-13700HX Processor	Intel® Core™ i7-13700HX Processor	Intel® Core™ i9-13900HX Processor
DISPLAY	16" WQXGA IPS 500nits Anti-glare, 100% sRGB, 240Hz, DisplayHDR™ 400, Dolby® Vision™, G-SYNC®, Low Blue Light, High Gaming Performance	16" WQXGA IPS 500nits Anti-glare, 100% sRGB, 240Hz, DisplayHDR™ 400, Dolby® Vision™, G-SYNC®, Low Blue Light, High Gaming Performance	16" WQXGA IPS 500nits Anti-glare, 100% sRGB, 240Hz, DisplayHDR™ 400, Dolby® Vision™, G-SYNC®, Low Blue Light, High Gaming Performance
GRAPHIC	NVIDIA® GeForce RTX™ 4060 8GB GDDR6	NVIDIA® GeForce RTX™ 4070 8GB GDDR6	NVIDIA® GeForce RTX™ 4070 8GB GDDR6
MEMORY / STORAGE	16GB DDR5 / 1TB SSD M.2 2280 PCIe*	16GB DDR5 / 1TB SSD M.2 2280 PCIe*	32GB DDR5 / 1TB SSD M.2 2280 PCIe*
PRICE	<b>RM7,299</b>	<b>RM8,499</b>	<b>RM9,099</b>
WARRANTY	2 Years Legion Ultimate Support worth up to RM650		
FREE GIFTS	Lenovo Legion Armoured Backpack		



Legion Coldfront 5.0 – the best-in-class thermal technology along with liquid metal and brand new 3D fan blades keep your system cool.

Total System TDP  
**235W**

3D Fan Blades  
**0.1mm**

Larger Intake and  
**Exhaust System**

**Liquid Metal**  
CPU Thermal Compound



A brighter and smarter experience on a 16" WQXGA PureSight Gaming 16:10 display



Command in true precision with Legion TrueStrike Keyboard



Power your entire journey with 99.99Whr battery and Super Rapid Charge

### Lenovo Legion 5i (15", Gen 6)

MODEL	82JH00G2MJ Phantom Blue	82JH00G1MJ Phantom Blue
PROCESSOR	Intel® Core™ i5-11400H Processor	Intel® Core™ i7-11800H Processor
DISPLAY	15.6" WQHD IPS 300nits Anti-glare, 100% sRGB, 165Hz, Dolby® Vision™, G-SYNC®	15.6" WQHD IPS 300nits Anti-glare, 100% sRGB, 165Hz, Dolby® Vision™, G-SYNC®
GRAPHIC	NVIDIA® GeForce RTX™ 3060 6GB GDDR6	NVIDIA® GeForce RTX™ 3060 6GB GDDR6
MEMORY / STORAGE	8GB DDR4 / 512GB SSD M.2 2280 PCIe®	16GB DDR4 / 512GB SSD M.2 2280 PCIe®
PRICE	<b>SPECIAL REBATE RM4,499</b> (NP: RM4,799)	<b>RM6,599</b>
WARRANTY	2 Years Legion Ultimate Support worth up to RM650	
FREE GIFTS	Lenovo Legion Armoured Backpack	

### Lenovo Legion 5i (15", Gen 7)

MODEL	82RC00CKMJ Storm Grey	82RC00A5MJ Storm Grey	82RB00AGMJ Storm Grey	82RB00AHMJ Storm Grey
PROCESSOR	Intel® Core™ i5-12450H Processor	Intel® Core™ i7-12700H Processor	Intel® Core™ i5-12500H Processor	Intel® Core™ i7-12700H Processor
DISPLAY	15.6" FHD IPS 300nits Anti-glare, 100% sRGB, 165Hz, Dolby® Vision™, G-SYNC®	15.6" FHD IPS 300nits Anti-glare, 100% sRGB, 165Hz, Dolby® Vision™, G-SYNC®	15.6" WQHD IPS 300nits Anti-glare, 100% sRGB, 165Hz, Dolby® Vision™, G-SYNC	15.6" WQHD IPS 300nits Anti-glare, 100% sRGB, 165Hz, Dolby® Vision™, G-SYNC®
GRAPHIC	NVIDIA® GeForce RTX™ 3050 4GB GDDR6	NVIDIA® GeForce RTX™ 3050 Ti 4GB GDDR6	NVIDIA® GeForce RTX™ 3060 6GB GDDR6	NVIDIA® GeForce RTX™ 3060 6GB GDDR6
MEMORY / STORAGE	8GB DDR5 / 512GB SSD M.2 2280 PCIe®	8GB DDR5 / 512GB SSD M.2 2280 PCIe®	16GB DDR5 / 512GB SSD M.2 2280 PCIe®	16GB DDR5 / 512GB SSD M.2 2280 PCIe®
PRICE	<b>SPECIAL REBATE RM3,999</b> (NP: RM4,299)	<b>SPECIAL REBATE RM4,699</b> (NP: RM4,799)	<b>SPECIAL REBATE RM4,599</b> (NP: RM5,199)	<b>SPECIAL REBATE RM4,999</b> (NP: RM5,599)
WARRANTY	2 Years Legion Ultimate Support worth up to RM650			
FREE GIFTS	Lenovo Legion Armoured Backpack			

# LEGION

## Legion Ultimate Support

Advanced support for Legion devices

### Introducing Legion Ultimate Support

For Legion owners, nothing matters more than winning. In your job, you need to stay connected, productive and ahead of the competition. And after work you enter another world of excitement and adrenaline, where victory is everything.

**Legion Ultimate Support is built to fit your double life**, with one single point of contact for all your support needs.

Our team of IT experts are gaming specialists, with **detailed knowledge of the latest games and gaming trends**. They'll help you with settings advice, hardware optimizations and more to keep you on point during the day, and make sure your games run smooth as silk.

### Productive all day

From content creation and video editing to remote calls and project presentations, your Legion device helps you stay in the zone and on top of your job. But even the most technical among us struggle with PC troubleshooting sometimes. And if things go south, you need it fixed. Fast.

Legion Ultimate Support gives you the **fast resolutions** you need, with **direct access to advanced technicians** ready to give you real-time solutions, whatever the issue. From **software assistance to hardware optimization, connectivity help and more**. And if we can't fix the problem over chat, email, or phone, our team will schedule an onsite visit, so you're back to work as soon as possible.

### Unbeatable all night

As a gamer, you know that it takes more than a great PC to win: it takes skill, experience and tactics. But even for the very best players, a moment's lag, freeze or glitch is all it takes to go from hero to zero.

Our **gamer-centric, 24/7 support is here to be your META - the Most Effective Tactic Available**. Legion Ultimate Support is the extra boost you need to get 100% performance, 100% of the time. So you can reach the top - and stay there.

#### Lenovo Legion 5 (15", Gen 7)

MODEL	82RE0033MJ 	82RE006YMJ 
PROCESSOR	AMD Ryzen™ 5 6600H Processor	AMD Ryzen™ 7 6800H Processor
DISPLAY	15.6" FHD IPS 300nits Anti-glare, 100% sRGB, 165Hz, Dolby® Vision™, FreeSync™, G-SYNC®	15.6" FHD IPS 300nits Anti-glare, 100% sRGB, 165Hz, Dolby® Vision™, FreeSync™, G-SYNC®
GRAPHIC	NVIDIA® GeForce RTX™ 3050 4GB GDDR6	NVIDIA® GeForce RTX™ 3050 4GB GDDR6
MEMORY / STORAGE	8GB DDR5 / 512GB SSD M.2 2280 PCIe®	8GB DDR5 / 512GB SSD M.2 2280 PCIe®
PRICE	 <b>RM3,699</b> (NP: RM3,999)	 <b>RM4,099</b> (NP: RM4,299)
WARRANTY	2 Years Legion Ultimate Support worth up to RM650	
FREE GIFTS	Lenovo Legion Active Gaming Backpack	

#### Lenovo Legion 5 (15", Gen 7)

MODEL	82RE0034MJ 	82RD004SMJ 
PROCESSOR	AMD Ryzen™ 7 6800H Processor	AMD Ryzen™ 7 6800H Processor
DISPLAY	15.6" FHD IPS 300nits Anti-glare, 100% sRGB, 165Hz, Dolby® Vision™, FreeSync™, G-SYNC®	15.6" WQHD (2560x1440) IPS 300nits Anti-glare, 100% sRGB, 165Hz, Dolby® Vision™, FreeSync™, G-SYNC®
GRAPHIC	NVIDIA® GeForce RTX™ 3050 Ti 4GB GDDR6	NVIDIA® GeForce RTX™ 3060 6GB GDDR6
MEMORY / STORAGE	8GB DDR5 / 512GB SSD M.2 2280 PCIe®	16GB DDR5 / 512GB SSD M.2 2280 PCIe®
PRICE	 <b>RM4,299</b> (NP: RM4,499)	 <b>RM4,599</b> (NP: RM5,199)
WARRANTY	2 Years Legion Ultimate Support worth up to RM650	
FREE GIFTS	Lenovo Legion Active Gaming Backpack	

# Unstoppable at work. Unbeatable at play.

Smarter  
technology  
for all

Lenovo

Your Legion is much more than a standard PC, so it deserves more than standard support. See how Legion Ultimate Support offers META support for people who depend on their devices to stay on task, and on target:

## How to reach your META

### > New Lenovo Legion owner?

Select **Legion Ultimate Support** as an add-on service for your new Legion device at [lenovo.com](https://lenovo.com) or ask your sales representative to attach it to your in-store purchase.

### > Want to upgrade your service?

Visit our e-support page at [www.lenovo.com/supportservices](https://www.lenovo.com/supportservices) or buy it through physical activation cards in partner stores.

For more information visit:

[www.lenovo.com/legion-ultimate-support](https://www.lenovo.com/legion-ultimate-support)

	Standard Support	Legion Ultimate Support
Technical Support	Level 1 - Basic	Level 2 - Advanced
Know-how around gaming titles, trends and communities	—	✓
24/7 availability - through phone, chat and email	—	✓
Onsite support and fast repair	—	✓
Support for hardware, software and accessories	—	✓

## Lenovo Legion 5 (16", Gen 8) **NEW**

MODEL	82Y9009DMJ Storm Grey
PROCESSOR	AMD Ryzen™ 7 7840HS Processor
DISPLAY	16" WQXGA IPS 300nits Anti-glare, 100% sRGB, 165Hz, Dolby® Vision™, FreeSync™, G-SYNC®, Low Blue Light
GRAPHIC	NVIDIA® GeForce RTX™ 4050 6GB GDDR6
MEMORY / STORAGE	16GB SO-DIMM DDR5 / 512GB SSD M.2 2280 PCIe*
PRICE	<b>RM5,999</b>
WARRANTY	2 Years Legion Ultimate Support worth up to RM650
FREE GIFTS	Lenovo Legion Armoured Backpack

## Lenovo Legion 5 (16", Gen 8) **NEW**

MODEL	82Y9009EMJ Storm Grey
PROCESSOR	AMD Ryzen™ 7 7840HS Processor
DISPLAY	16" WQXGA IPS 300nits Anti-glare, 100% sRGB, 165Hz, Dolby® Vision™, FreeSync™, G-SYNC®, Low Blue Light
GRAPHIC	NVIDIA® GeForce RTX™ 4060 8GB GDDR6
MEMORY / STORAGE	16GB DDR5 / 1TB SSD M.2 2280 PCIe*
PRICE	<b>RM6,599</b>
WARRANTY	2 Years Legion Ultimate Support worth up to RM650
FREE GIFTS	Lenovo Legion Armoured Backpack



# Lenovo LOQ 15IRH8

## Beyond Performance with 13th Gen Intel® Core™ i7

Lenovo LOQ gaming rigs provide all the power you need from top-of-the-line processors and NVIDIA® GeForce RTX™ GPUs. Plus, Lenovo AI Engine+ with the Lenovo LA1 AI chip empowers you to tackle the hottest AAA titles, study, work, or create and stream content. Enjoy lightning-fast gameplay on high-resolution displays and unparalleled controls with gamer-centric keyboards. This is your chance to up the stakes with Lenovo LOQ.



Intel® Core™ i7 processor

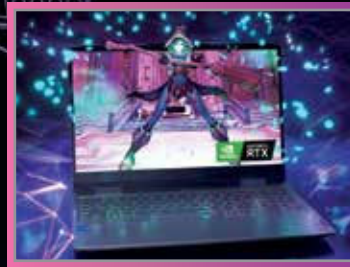
Lenovo LOQ 15IRH8 (15", Gen 8) <b>NEW</b>			
MODEL	82XV00G0MJ <b>Storm Grey</b>	82XV0078MJ <b>Storm Grey</b>	82XV0079MJ <b>Storm Grey</b>
PROCESSOR	Intel® Core™ i5-12450H Processor	Intel® Core™ i5-13420H Processor	Intel® Core™ i7-13620H Processor
DISPLAY	15.6" FHD IPS 350nits Anti-glare, 45% NTSC, 144Hz, G-SYNC®	15.6" WQHD IPS 350nits Anti-glare, 100% sRGB, 165Hz, G-SYNC®	15.6" WQHD IPS 350nits Anti-glare, 100% sRGB, 165Hz, G-SYNC®
GRAPHIC	NVIDIA® GeForce RTX™ 2050 4GB GDDR6	NVIDIA® GeForce RTX™ 4050 6GB GDDR6	NVIDIA® GeForce RTX™ 4050 6GB GDDR6
MEMORY / STORAGE	8GB DDR5 / 512GB SSD M.2 2242 PCIe®	8GB DDR5 / 512GB SSD M.2 2242 PCIe®	8GB DDR5 / 512GB SSD M.2 2242 PCIe®
PRICE	<b>SPECIAL REBATE RM3,299</b> (NP: RM3,699)	<b>SPECIAL REBATE RM4,499</b> (NP: RM5,099)	<b>SPECIAL REBATE RM4,899</b> (NP: RM5,499)
WARRANTY	2 Years Onsite Premium Care Warranty worth up to RM519		

Lenovo IdeaPad Gaming 3i (16", Gen 7)				
MODEL	82SA00EXMJ <b>Onyx Grey</b>	82SA0024MJ <b>Onyx Grey</b>	82SA00A9MJ <b>Onyx Grey</b>	82SA00A8MJ <b>Onyx Grey</b>
PROCESSOR	Intel® Core™ i7-12650H Processor	Intel® Core™ i7-12650H Processor	Intel® Core™ i5-12450H Processor	Intel® Core™ i7-12650H Processor
DISPLAY	16" WUXGA IPS 350nits Anti-glare, 100% sRGB, 165Hz	16" WUXGA IPS 350nits Anti-glare, 100% sRGB, 165Hz	16" WUXGA IPS 350nits Anti-glare, 100% sRGB, 165Hz	16" WUXGA IPS 350nits Anti-glare, 100% sRGB, 165Hz
GRAPHIC	NVIDIA® GeForce RTX™ 3050 4GB GDDR6	NVIDIA® GeForce RTX™ 3050 Ti 4GB GDDR6	NVIDIA® GeForce RTX™ 3060 6GB GDDR6	NVIDIA® GeForce RTX™ 3060 6GB GDDR6
MEMORY / STORAGE	8GB DDR4 / 512GB SSD M.2 2242 PCIe®	8GB DDR4 / 512GB SSD M.2 2242 PCIe®	16GB DDR4 / 512GB SSD M.2 2242 PCIe®	16GB DDR4 / 512GB SSD M.2 2242 PCIe®
PRICE	<b>RM3,599</b>	<b>RM3,799</b>	<b>SPECIAL REBATE RM3,699</b> (NP: RM3,999)	<b>SPECIAL REBATE RM3,999</b> (NP: RM4,299)
WARRANTY	2 Years Onsite Premium Care Warranty worth up to RM519			

+

**SMARTER GAMING. HIGHER FRAMERATES WITH LENOVO AI ENGINE+ AND A DEDICATED MUX SWITCH.**

+



**NVIDIA® GeForce RTX™ 4050**



**100% anti-ghosting**

+

**15.6" WQHD DISPLAY, 165HZ REFRESH RATE, AND 100% SRGB COLORS.**

+

+

**UP TO 32GB OF DUAL-CHANNEL 5600MHZ DDR5 MEMORY, AND 140W USB-C PD.**

+



**Ultimate Durability, MIL-STD Tests**



**Whisper-quiet thermal solution**

## Lenovo LOQ 15APH8 (15", Gen 8) **NEW**

MODEL	82XT0033MJ <b>Storm Grey</b>	82XT0034MJ <b>Storm Grey</b>	82XT00ATMJ <b>Storm Grey</b>
PROCESSOR	AMD Ryzen™ 5 7640HS Processor	AMD Ryzen™ 7 7840HS Processor	AMD Ryzen™ 5 7640HS Processor
DISPLAY	15.6" WQHD IPS 350nits Anti-glare, 100% sRGB, 165Hz, G-SYNC®, FreeSync™	15.6" WQHD IPS 350nits Anti-glare, 100% sRGB, 165Hz, G-SYNC®, FreeSync™	15.6" FHD IPS 350nits Anti-glare, 45% NTSC, 144Hz, G-SYNC®, FreeSync™
GRAPHIC	NVIDIA® GeForce RTX™ 4050 6GB GDDR6	NVIDIA® GeForce RTX™ 4050 6GB GDDR6	NVIDIA® GeForce RTX™ 4050 6GB GDDR6
MEMORY / STORAGE	8GB SO-DIMM DDR5 / 512GB SSD M.2 2242 PCIe*	8GB SO-DIMM DDR5 / 512GB SSD M.2 2242 PCIe*	8GB SO-DIMM DDR5 / 512GB SSD M.2 2242 PCIe*
PRICE	<b>SPECIAL REBATE RM4,499</b> (NP: RM4,699)	<b>SPECIAL REBATE RM4,799</b> (NP: RM5,299)	<b>SPECIAL REBATE RM4,199</b> (NP: RM4,599)
WARRANTY	2 Years Onsite Premium Care Warranty worth up to RM519		

## Lenovo LOQ 15APH8 (15", Gen 8) **NEW**

## Lenovo IdeaPad Gaming 3 (15", Gen 6)

MODEL	82XT00AUMJ <b>Storm Grey</b>	82XT00AVMJ <b>Storm Grey</b>	82K200B2MJ <b>Shadow Black</b>	82K2027VMJ <b>Shadow Black</b>
PROCESSOR	AMD Ryzen™ 7 7840HS Processor	AMD Ryzen™ 7 7840HS Processor	AMD Ryzen™ 7 5800H Processor	AMD Ryzen™ 5 5500H Processor
DISPLAY	15.6" FHD IPS 350nits Anti-glare, 45% NTSC, 144Hz, G-SYNC®, FreeSync™	15.6" FHD IPS 350nits Anti-glare, 45% NTSC, 144Hz, G-SYNC®, FreeSync™	15.6" FHD IPS 300nits Anti-glare, 100% sRGB, 165Hz	15.6" FHD IPS 300nits Anti-glare, 45% NTSC, 144Hz
GRAPHIC	NVIDIA® GeForce RTX™ 4050 6GB GDDR6	NVIDIA® GeForce RTX™ 4060 8GB GDDR6	NVIDIA® GeForce RTX™ 3060 6GB GDDR6	NVIDIA® GeForce RTX™ 2050 4GB GDDR6
MEMORY / STORAGE	8GB SO-DIMM DDR5 / 512GB SSD M.2 2242 PCIe*	16GB SO-DIMM DDR5 / 512GB SSD M.2 2242 PCIe*	16GB SO-DIMM DDR4 / 512GB SSD M.2 2242 PCIe*	16GB SO-DIMM DDR4 / 512GB SSD M.2 2242 PCIe*
PRICE	<b>SPECIAL REBATE RM4,499</b> (NP: RM4,999)	<b>SPECIAL REBATE RM4,999</b> (NP: RM5,499)	<b>RM3,999</b>	<b>RM2,999</b>
WARRANTY	2 Years Onsite Premium Care Warranty worth up to RM519			

# Lenovo IDEAPAD



Make the everyday easier with Windows 11

## Lenovo IdeaPad Slim 5 Pro Forged to performance

### Be an overachiever

Take a massive leap forward in portable performance with up to AMD Ryzen™ 7 Creator Edition Processor and NVIDIA® GeForce RTX™ 3050 graphics.

Up to  
**AMD Ryzen™ 7**  
processor

Up to  
**20 threads**

Up to  
**65W**  
Thermal Design Power



### Display as clear as day

See every bit of detail without compromise on a up to 2.5K display with a taller 16:10 aspect ratio and maximized 91% active area ratio.

**100% sRGB**  
color gamut

Up to  
**120Hz**  
refresh rate



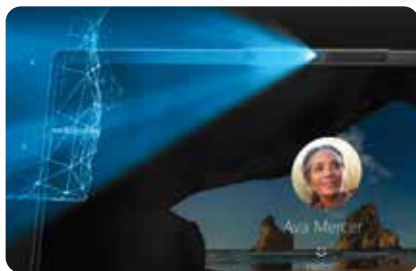
### Surround sound

Step into a multi-dimensional soundscape with dual Dolby Atmos® speakers, wrapping you with crystal clear audio from movies and music.

**Dolby** **2x 2W**  
ATMOS speakers

### Smarter technology

Start your say seamlessly with Smart Login by flipping the lid open and complete your creative projects with blazing speed empowered by Smart Power.



### Improved typing and navigation

The new keyboard comes with soft-landing keys with a 1.3mm key travel distance and a bigger touchpad.



### Extraordinary battery

Digital nomads can rejoice with an all-day battery life\* and refuel quickly with Lenovo Rapid Charge.



	Lenovo IdeaPad Slim 5 (16", Gen 8) <b>NEW</b>		Lenovo IdeaPad Slim 5 Pro (16", Gen 7)	
MODEL	82XG007HMJ	<div>Abyss Blue   82XG007JMJ</div> <div>Cloud Grey</div>	82SN004GMJ	<div>Storm Grey</div>
PROCESSOR	AMD Ryzen™ 7 7730U Processor		AMD Ryzen™ 5 6600HS Creator Edition Processor	AMD Ryzen™ 7 6800HS Creator Edition Processor
DISPLAY	16" WUXGA IPS 300nits Anti-glare, 45% NTSC, TÜV Low Blue		16" 2.5K IPS 350nits Anti-glare, 100% sRGB, 120Hz, G-SYNC*, TÜV Low Blue Light, TCON	16" 2.5K IPS 350nits Anti-glare, 100% sRGB, 120Hz, G-SYNC*, TÜV Low Blue Light, TCON
GRAPHIC	Integrated AMD Radeon™ Graphics		NVIDIA® GeForce RTX™ 3050 (4GB GDDR6)	NVIDIA® GeForce RTX™ 3050 (4GB GDDR6)
MEMORY / STORAGE	16GB DDR4 / 512GB SSD M.2 2242 PCIe® NVMe*		16GB LPDDR5 / 512GB SSD M.2 2280 PCIe® NVMe*	16GB LPDDR5 / 512GB SSD M.2 2280 PCIe® NVMe*
PRICE	RM3,399		RM4,099	RM4,499
WARRANTY	2 Years Onsite Premium Care Warranty worth up to RM519		3 Years Onsite Premium Care Warranty worth up to RM933	
FREE GIFTS	Office Home & Student 2021 included worth RM529			

# Lenovo IDEAPAD



Make the everyday easier with Windows 11

## Lenovo IdeaPad Slim 5i

## High impact performance and design



### Clarity that impresses

Upgrade your video calls with an FHD camera and dual-array microphone for crystal-clear video calls.

**1080P**  
FHD camera with  
privacy shutter

**Smart  
Noise Cancelling**

### Never a dull moment

Plunge into auditory heaven with user-facing Dolby Audio™ dual speakers, enhancing dialogue and amplifying volume without distortion. And treat your eyes on a 4-sided narrow bezel WUXGA IPS display with up to 90% active area ratio.



### Create, connect, communicate

Use it as your power supply or plug into an up-to-4K display for enhanced work efficiency.



**Two full-function  
USB Type-C ports**

### Elevate your performance

Enjoy hassle-free content creation and multitasking with 13<sup>th</sup> Gen Intel® Core™ i7 processor and Integrated Intel® UHD Graphics.



Up to  
**40W**  
Thermal Design Power

Up to  
**16 hours**  
of battery life\*

Enabled with  
**Smart Power**

### Crafted to delight, designed to shine

The all-metal body uses an exquisite aluminum alloy for strength and lightness. Enhanced with CNC diamond-cut edges, the elegant device is also military-grade certified for resilient durability.



Intel® Core™ i7 processor

	Lenovo IdeaPad Slim 5i (14", Gen 8) <b>NEW</b>		Lenovo IdeaPad Slim 5i (16", Gen 8) <b>NEW</b>
MODEL	82XD0054MJ Cloud Grey	82XD0055MJ Cloud Grey	83BG001LMJ Abyss Blue   83BG001MMJ Cloud Grey
PROCESSOR	Intel® Core™ i5-13500H Processor	Intel® Core™ i7-13620H Processor	Intel® Core™ i5-12450H Processor
DISPLAY	14" WUXGA OLED 400nits Glossy, 100% DCI-P3, TÜV Low Blue Light, DisplayHDR™ True Black 500	14" WUXGA OLED 400nits Glossy, 100% DCI-P3, TÜV Low Blue Light, DisplayHDR™ True Black 500	16" WUXGA IPS 300nits Anti-glare, 45% NTSC, TÜV Low Blue
GRAPHIC	Integrated Intel® Iris® Xe Graphics	Integrated Intel® UHD Graphics	Integrated Intel® UHD Graphics
MEMORY / STORAGE	16GB LPDDR5 / 512GB SSD M.2 2242 PCIe® NVMe®	16GB LPDDR5 / 512GB SSD M.2 2242 PCIe® NVMe®	16GB LPDDR5 / 512GB SSD M.2 2242 PCIe® NVMe®
PRICE	<b>RM3,699</b>	<b>RM4,099</b>	<b>RM2,699</b>
WARRANTY	2 Years Onsite Premium Care Warranty worth up to RM519		
FREE GIFTS	Office Home & Student 2021 included worth RM529		

# Lenovo IDEAPAD

## Lenovo IdeaPad Slim 3i

## Smarter Learning Enabled

The IdeaPad Slim 3i is designed to elevate remote learning. The intelligent Thermal Solution optimizes performance and battery life, while the enhanced Smart Learning suite of solutions available via Lenovo Vantage help manage your well-being.



### So close to reality

The 720p camera and strategically placed array microphones at the top of the display ensure visual clarity and crystal clear audio.



### See and do more

Expand your vision through the razor-thin bezel display that is one of the highest Active Area Ratio of its class, within a smaller and sleeker chassis which gives you more bag space.

**FHD**  
IPS display

**4-side**  
narrow bezels

Up to  
**88%**  
active area ratio

### Privacy on-demand

The built-in privacy shutter allows you to manually block the camera for instant privacy. Just slide to cover the lens — you'll see a red dot and will immediately be behind the scenes.

Built-in  
**Privacy  
Shutter**



	Lenovo IdeaPad Slim 3 (15", Gen 7)		Lenovo IdeaPad Slim 3 (15", Gen 8) <b>NEW</b>
MODEL	82XQ003WMJ   82XQ0040MJ Abyss Blue Arctic Grey	82RN0084MJ Arctic Grey	82XM004MMJ Cloud Grey
PROCESSOR	AMD Ryzen™ 5 7520U Processor	AMD Ryzen™ 7 5825U Processor	AMD Ryzen™ 7 7730U Processor
DISPLAY	15.6" FHD TN 250nits Anti-glare	15.6" FHD TN 250nits Anti-glare	15.6" FHD TN 300nits Anti-glare
GRAPHIC	Integrated AMD Radeon™ 610M Graphics	Integrated AMD Radeon™ Graphics	Integrated AMD Radeon™ Graphics
MEMORY / STORAGE	16GB LPDDR5 / 512GB SSD M.2 2242 PCIe® NVMe®	8GB DDR4 / 512GB SSD M.2 2280 PCIe® NVMe®	8GB DDR4 / 512GB SSD M.2 2242 PCIe® NVMe®
PRICE	<b>RM2,349</b>	<b>RM2,999</b>	<b>RM3,099</b>
WARRANTY	2 Years Onsite Premium Care Warranty worth up to RM519	<ul style="list-style-type: none"> <li>2 Years Onsite Premium Care Warranty worth up to RM519</li> <li>1st Year Accidental Damage Protection worth up to RM299</li> </ul>	2 Years Onsite Premium Care Warranty worth up to RM519
FREE GIFTS	Office Home & Student 2021 included worth RM529		

	Lenovo IdeaPad Slim 3i (15", Gen 7)		Lenovo IdeaPad Slim 3i (15", Gen 8) <b>NEW</b>
MODEL	82RK004EMJ   82RK004FMJ   82RK004GMJ Abyss Blue Arctic Grey Misty Blue	82RK00FVMJ Arctic Grey	83ER004QMJ   83ER004RMJ Abyss Blue Arctic Grey
PROCESSOR	Intel® Core™ i3-1215U Processor	Intel® Core™ i7-1255U Processor	Intel® Core™ i5-12450H Processor
DISPLAY	15.6" FHD IPS 300N Anti-glare	15.6" FHD TN 250nits Anti-glare	15.6" FHD IPS 250N Anti-glare
GRAPHIC	Integrated Intel® UHD Graphics	Integrated Intel Iris® Xe Graphics	Integrated Intel® UHD Graphics
MEMORY / STORAGE	8GB DDR4 / 256GB SSD M.2 2242 PCIe® NVMe®	8GB DDR4 / 512GB SSD M.2 2280 PCIe® NVMe®	16GB LPDDR5 / 512GB SSD M.2 2242 PCIe® NVMe®
PRICE	<b>RM1,949</b>	<b>RM3,499</b>	<b>SPECIAL REBATE RM2,499</b> (NP: RM2,699)
WARRANTY	<ul style="list-style-type: none"> <li>2 Years Onsite Premium Care Warranty worth up to RM519</li> <li>1st Year Accidental Damage Protection worth up to RM299</li> </ul>		2 Years Onsite Premium Care Warranty worth up to RM519
FREE GIFTS	Office Home & Student 2021 included worth RM529		

## Learning the Smart Way

Building the perfect study environment is key to academic success. Lenovo's upgraded Smart Learning features are designed to help you get the best out of home-based learning without compromising on comfort and well-being.

### Lenovo Aware

Remaining focused in front of the computer for long hours can be tiring. **Lenovo Aware** hosts an ecosystem of well-being features that are designed to help you stay healthy, mindful and productive at the

same time. With thoughtful features such as **"Attention Reminder," "Break Reminder,"** as well as distance and posture detection, Lenovo Aware will let you know whenever you need to sit up straight or take a break.

Parents can get a holistic overview of their children's digital usage through **Lenovo Aware**, which provides a **daily report** with statistics on posture, viewing distance, energy and focus levels.



"Take Time out - Break Reminder"



"You are too close - Distance Reminder"



"Please sit upright - Posture Reminder"



Eye Care Feature

### Eye care is self-care

Long study sessions mean increased screen-time and overexposure to harmful blue light. Protect your eyes with **Lenovo Eye Care 2.0**, which adjusts the color temperature to your preference and minimizes blue light to maintain safe and healthy vision.

	Lenovo IdeaPad Slim 3i (14", Gen 8) <b>NEW</b>	Lenovo IdeaPad Slim 5 (14", Gen 8) <b>NEW</b>	Lenovo IdeaPad Slim 5 (16", Gen 8) <b>NEW</b>
MODEL	83EQ002EMJ   83EQ002FMJ Abyss Blue Arctic Grey	82XS002UMJ Cloud Grey	82XG007HMJ   82XG007JMJ Abyss Blue Cloud Grey
PROCESSOR	Intel® Core™ i5-12450H Processor	AMD Ryzen™ 7 7730U Processor	AMD Ryzen™ 7 7730U Processor
DISPLAY	14" FHD IPS 300nits Anti-glare	14" FHD IPS 300nits Anti-glare, 45% NTSC, TÜV Low Blue Light	16" WUXGA IPS 300nits Anti-glare, 45% NTSC, TÜV Low Blue
GRAPHIC	Integrated Intel® UHD Graphics	Integrated AMD Radeon™ Graphics	Integrated AMD Radeon™ Graphics
MEMORY / STORAGE	16GB LPDDR5 / 512GB SSD M.2 2242 PCIe® NVMe®	16GB DDR4 / 512GB SSD M.2 2242 PCIe® NVMe®	16GB DDR4 / 512GB SSD M.2 2242 PCIe® NVMe®
PRICE	<b>SPECIAL REBATE</b> <b>RM2,499</b> (NP: RM2,599)	<b>RM3,399</b>	<b>RM3,399</b>
WARRANTY	2 Years Onsite Premium Care Warranty worth up to RM519		
FREE GIFTS	Office Home & Student 2021 included worth RM529		

	Lenovo IdeaPad Slim 1 (15", Gen 7)			
MODEL	82VG00CVMJ   82VG00D7MJ Cloud Grey Sand	82VG00KMMJ   82VG00KNMJ Cloud Grey Sand	82VG0036MJ   82VG0037MJ Cloud Grey Sand	82R400EUMJ   82R400EVMJ Cloud Grey Sand
PROCESSOR	AMD Athlon™ Silver 7120U Processor	AMD Athlon™ Silver 7120U Processor	AMD Ryzen™ 3 7320U Processor	AMD Ryzen™ 5 5500U Processor
DISPLAY	15.6" HD TN 220nits Anti-glare	15.6" HD TN 220nits Anti-glare	15.6" FHD TN 220nits Anti-glare	15.6" FHD TN 220nits Anti-glare
GRAPHIC	Integrated AMD Radeon™ 610M Graphics	Integrated AMD Radeon™ 610M Graphics	Integrated AMD Radeon™ 610M Graphics	Integrated AMD Radeon™ Graphics
MEMORY / STORAGE	8GB LPDDR5 / 256GB SSD M.2 2242 PCIe® NVMe®	8GB LPDDR5 / 512GB SSD M.2 2242 PCIe® NVMe®	8GB LPDDR5 / 512GB SSD M.2 2242 PCIe® NVMe®	16GB DDR4 / 512GB SSD M.2 2242 PCIe® NVMe®
PRICE	<b>RM1,499</b>	<b>RM1,699</b>	<b>RM1,799</b>	<b>RM2,249</b>
WARRANTY	1 Year Onsite Premium Care Warranty worth up to RM167		• 2 Years Onsite Premium Care Warranty worth up to RM519 • 1st Year Accidental Damage Protection worth up to RM299	2 Years Onsite Premium Care Warranty worth up to RM519
FREE GIFTS	Office Home & Student 2021 included worth RM529			

# Lenovo IDEAPAD



Make the everyday easier with Windows 11

## Lenovo IdeaPad Duet 5i

# Create more, create effortlessly.

Create effortlessly on-the-go with the latest IdeaPad Duet 5i that fits nicely into your bags. A highly versatile device that weighs 839g and allows you to create freely in 4 different modes: Tablet Mode, Pen Mode, Free Mode and Laptop Mode. Switch between indoor and outdoor workspaces in just a snap.



### See more of every detail

Get more screen estate with a 2.5K QHD 16:10 IPS display and 450nits brightness that delivers crystal clear visuals even under bright sunlight.

**16:10**  
IPS Display,  
2560 x 1600

Up to  
**88.5%**  
Active Area Ratio

**500nits**  
Brightness

	Lenovo IdeaPad Duet 5i (12", Gen 7)	Lenovo IdeaPad Duet 5i (12", Gen 8) <b>NEW</b>	Lenovo IdeaPad Duet 5i (12", Gen 9) <b>NEW</b>
MODEL	82TQ002DMJ   Stone Blue   82TQ002EMJ   Storm Grey	83B30009MJ   Storm Grey	83B30050MJ   Storm Grey
PROCESSOR	Intel® Core™ i3-1215U Processor	Intel® Core™ i5-1335U Processor	Intel® Core™ i7-1355U Processor
DISPLAY	12.4" 2.5K LTPS 500nits Glossy / Anti-fingerprint, 96% DCI-P3, Dolby® Vision™, TÜV Low Blue Light, Glass, Touch	12.4" 2.5K LTPS 500N Glossy / Anti-fingerprint, 95% DCI-P3, Dolby® Vision™, Glass, Touch	12.4" 2.5K LTPS 500N Glossy / Anti-fingerprint, 95% DCI-P3, Dolby® Vision™, Glass, Touch
GRAPHIC	Integrated Intel® UHD Graphics	Integrated Intel® Iris® X® Graphics	Integrated Intel® Iris® X® Graphics
MEMORY / STORAGE	8GB LPDDR4x / 256GB SSD M.2 2242 PCIe® NVMe®	16GB LPDDR4x / 512GB SSD M.2 2242 PCIe® NVMe®	16GB LPDDR4x / 512GB SSD M.2 2242 PCIe® NVMe®
PRICE	<b>SPECIAL REBATE</b> <b>RM3,499</b> (NP: RM3,799)	<b>RM4,799</b>	<b>RM5,299</b>
WARRANTY	3 Years Onsite Premium Care Warranty worth up to RM933		

	Lenovo IdeaPad Flex 5 (14", Gen 8) <b>NEW</b>		
MODEL	82XX0095MJ   82XX009TMJ   82XX009UMJ Abyss Blue   Arctic Grey   Stone Blue	82XX0005MJ   82XX0006MJ   82XX0007MJ Abyss Blue   Arctic Grey   Stone Blue	82XX009VMJ   82XX009WMJ Abyss Blue   Stone Blue
PROCESSOR	AMD Ryzen™ 5 7530U Processor	AMD Ryzen™ 5 7530U Processor	AMD Ryzen™ 7 7730U Processor
DISPLAY	14" WUXGA IPS 300nits Glossy, 45% NTSC, TÜV Low Blue Light, Glass, Touch	14" WUXGA IPS 300nits Glossy, 45% NTSC, TÜV Low Blue Light, Glass, Touch	14" WUXGA IPS 300nits Glossy, 45% NTSC, TÜV Low Blue Light, Glass, Touch
GRAPHIC	Integrated AMD Radeon™ Graphics	Integrated AMD Radeon™ Graphics	Integrated AMD Radeon™ Graphics
MEMORY / STORAGE	16GB LPDDR4x / 512GB SSD M.2 2242 PCIe® NVMe®	8GB LPDDR4x / 512GB SSD M.2 2242 PCIe® NVMe®	16GB LPDDR4x / 512GB SSD M.2 2242 PCIe® NVMe®
PRICE	<b>RM3,499</b>	<b>SPECIAL REBATE</b> <b>RM3,299</b> (NP: RM3,499)	<b>RM3,899</b>
WARRANTY	2 Years Onsite Premium Care Warranty worth up to RM519	<ul style="list-style-type: none"> <li>2 Years Onsite Premium Care Warranty worth up to RM519</li> <li>1st Year Accidental Damage Protection worth up to RM299</li> </ul>	2 Years Onsite Premium Care Warranty worth up to RM519
FREE GIFTS	Office Home & Student 2021 included worth RM529		

# Lenovo IDEACENTRE



Make the everyday easier with Windows 11

## Lenovo IdeaCentre AIO 3i Efficient performance for the home

The Lenovo IdeaCentre AIO 3i is a PC for the family and a compact art piece for the home. Easily breeze through demanding tasks thanks to the up to 12th Generation Intel® processors. A vivid IPS FHD display and Harman Kardon®-certified audio make this a modern hub that is perfect for learn, work and play.

### Improved productivity

The elegant modern design comes with a mobile phone dock that makes it easier to multitask between your PC and smartphone.



Lenovo IdeaCentre AIO 3i		
MODEL	FOGJ00TEMI <b>Black</b>	FOGJ00JQMI <b>White</b>
PROCESSOR	Intel® Core™ i7-13620H Processor	Intel® Core™ i5-13420H Processor
DISPLAY	27" FHD (1920x1080) IPS 300nits Anti-glare, 99% sRGB, Touch	27" FHD (1920x1080) IPS 300nits Anti-glare, 99% sRGB, Touch
GRAPHIC	Integrated Intel® UHD Graphics	Integrated Intel® UHD Graphics
MEMORY / STORAGE	8GB DDR4 / 512GB SSD M.2 PCIe NVMe	8GB DDR4 / 512GB SSD M.2 PCIe NVMe
PRICE	<b>RM4,999</b>	<b>RM3,999</b>
WARRANTY	3 Years Onsite Premium Care Warranty worth up to RM933	
FREE GIFTS	Office Home & Student 2021 included worth RM529	



### Superior audio quality

Fill up the room with built-in dual 3W stereo speakers certified by Harman Kardon®, ensuring studio-like audio for movies and music.

	Lenovo IdeaCentre 3i (Gen 7)	Lenovo IdeaCentre 3i (Gen 8) <b>NEW</b>	
MODEL	90SM00CCMI <b>Cloud Grey</b>	90VT001VMI <b>Cloud Grey</b>	90VT001WMI <b>Cloud Grey</b>
PROCESSOR	Intel® Core™ i3-12100 Processor	Intel® Core™ i5-13400 Processor	Intel® Core™ i7-13700 Processor
CHIPSET	Intel® B660	Intel® B660	Intel® B660
GRAPHIC	Integrated Intel® UHD Graphics 730	Integrated Intel® UHD Graphics 730	Integrated Intel® UHD Graphics 770
MEMORY / STORAGE	8GB DDR4 / 512GB SSD M.2 2280 PCIe® NVMe®	8GB DDR4 / 512GB SSD M.2 2280 PCIe® NVMe®	8GB DDR4 / 512GB SSD M.2 2280 PCIe® NVMe®
PRICE	<b>RM2,199</b>	<b>RM2,699</b>	<b>RM3,899</b>
WARRANTY	3 Years Onsite Premium Care Warranty worth up to RM933		
FREE GIFTS	Office Home & Student 2021 included worth RM529		



## LOQ



## LEGION

	LOQ 17IRB8 <b>NEW</b>	LOQ 17IRB8 <b>NEW</b>	Legion T5 26ARA8 <b>NEW</b>
MODEL	90VH009MMI <b>Raven Black</b>	90VH009NMI <b>Raven Black</b>	90UY0073MI <b>Storm Grey</b>
PROCESSOR	Intel® Core™ i5-13400F Processor	Intel® Core™ i7-13700F Processor	AMD Ryzen™ 7 7700 Processor
CHIPSET	Intel® B760 Chipset	Intel® B760 Chipset	AMD B650 Chipset
GRAPHIC	NVIDIA® GeForce RTX™ 3050 8GB GDDR6	NVIDIA® GeForce RTX™ 4060 8GB GDDR6	NVIDIA® GeForce RTX™ 4070 12GB GDDR6X
MEMORY / STORAGE	8GB DDR4 / 512GB SSD M.2 2280 PCIe® NVMe®	8GB DDR4 / 512GB SSD M.2 2280 PCIe® NVMe®	16GB DDR5 / 512GB SSD M.2 2280 PCIe® NVMe®
PRICE	<b>RM4,199</b>	<b>RM5,699</b>	<b>RM7,999</b>
WARRANTY	3 Years Onsite Premium Care Warranty worth up to RM933		3 Years Legion Ultimate Support worth up to RM850



# Lenovo Tab P11

2nd Gen

## From classy to first class

Classy in your hands and first class on performance, the Tab P11 (2nd Gen) delivers incredible visuals on the expansive 11.5" 2K adaptive 120Hz slim-bezel display and stunning Dolby Atmos® sound. Embedded with a powerful octa-core processor and a suite of productivity features such as Lenovo FreeStyle and Reading Mode, you can supercharge your hybrid life anytime, anywhere.



**7700mAh** (Typ.)



### Feed your need for speed

The powerful octa-core processor is designed to deliver portable laptop-quality performance and long-lasting battery life for working and elite gaming unplugged.



Up to  
**6GB**  
RAM

Up to  
**10 hours**  
of video playback

**4G LTE support**  
available Sim card/  
Data/Phone call

	Lenovo Tab P11 (2nd Gen)	Lenovo Tab P11 Plus
MODEL	ZABG0071MY <b>Storm Grey</b>	ZA9L0309MY <b>Slate Grey</b>   ZA9L0283MY <b>Modernist Teal</b>   ZA9L0281MY <b>Platinum Grey</b>
OPERATING SYSTEM	Android 12L or later	Android 11 or later
DISPLAY	11.5" 2K (2000x1200) IPS 400nits Anti-fingerprint, 97.5% DCI-P3, 120Hz, Corning® Gorilla® Glass 3, Touch	11" 2K (2000x1200) IPS Anti-fingerprint, 400nits, Touch
PROCESSOR	MediaTek Helio G99 (8C, 2x A76 @2.2GHz + 6x A55 @2.0GHz)	MediaTek Helio G90T (8C, 2x A76 @2.05GHz + 6x A55 @2.0GHz)
MEMORY / STORAGE	6GB + 128GB	6GB + 128GB
GPU	Integrated ARM Mali-G57 MC2 GPU	Integrated ARM Mali-G76 MC4 GPU
CAMERA (FRONT/BACK)	Front 8.0MP / Rear 13.0MP	Front 8.0MP + ToF Sensor / Rear 13.0MP
CONNECTIVITY	WLAN 802.11ac + Bluetooth 5.2 + WiFi + 4G LTE + Voice Call	WLAN 802.11ac + Bluetooth 5.1 + WiFi + 4G LTE + Voice Call
WARRANTY	1 Year Carry-in	1 Year Carry-in
PRICE	<b>RM1,699</b>	<b>RM1,149</b>
FREE GIFTS	Keyboard and Pen worth up to RM698	Folio Case worth up to RM99

	Lenovo Tab M8 (4th Gen)	Lenovo Tab M10 (3rd Gen)	Lenovo Tab M10 Plus (3rd Gen)
MODEL	ZABV0141MY <b>Arctic Grey</b>	ZAAF0016MY   ZAAH0030MY <b>Storm Grey</b>	ZAAN0000MY <b>Storm Grey</b>   ZAAN0064MY <b>Frost Blue</b>
OPERATING SYSTEM	Android™ 12 (Go edition)	Android 11™ or Later	Android™ 12 or Later
DISPLAY	8" HD (1280x800) ADS 350nits Anti-fingerprint, Touch	10.1" WUXGA (1920x1200) IPS 320nits, Anti-fingerprint, Touch, 100% sRGB	10.61" 2K (2000x1200) IPS 400nits, Anti-fingerprint, 72% NTSC, Touch
PROCESSOR	MediaTek Helio A22 (4C, 4x A53 @2.0GHz)	Unisoc T610 (8C, 2x A75 @1.8GHz + 6x A55 @1.8GHz)	Qualcomm® Snapdragon™ SDM680 (8C, 4x A73 @2.4 GHz + 4x A53@1.9 GHz)
MEMORY / STORAGE	3GB + 32GB	4GB + 64GB	4GB + 128GB
GPU	Integrated IMG PowerVR GE-class GPU	Integrated ARM Mali G52 3EE 2-Core	Integrated Qualcomm Adreno™ 610 GPU
CAMERA (FRONT/BACK)	Front 2.0MP / Rear 5.0MP	Front 5.0MP / Rear 8.0MP	Front 8.0MP / Rear 8.0MP
CONNECTIVITY	WLAN 802.11ac + Bluetooth 5.0 + 4G LTE + Voice Call	WLAN 802.11ac + Bluetooth 5.0 + 4G LTE + Voice Call	WLAN 802.11ac + Bluetooth 5.1 + 4G LTE + Voice Call
WARRANTY	1 Year Carry-in	1 Year Carry-in	1 Year Carry-in
PRICE	<b>RM579</b>	<b>RM729</b>	<b>RM999</b>
FREE GIFTS	Lenovo Bumper Case and Film worth up to RM89	Lenovo Folio Case and Film worth up to RM119	Lenovo Folio Case worth up to RM99

## Lenovo Monitor



24" Mainstream Monitor

**Lenovo D24-40**  
67A2KAC6MY

**RM309**

1920x1080 | 75Hz | 4ms |  
7ms | 1x HDMI\* 1.4, 1x VGA |  
VA Panel



27" Daily use Monitor

**Lenovo D27-40**  
67A3KAC6MY

**RM399**

1920x1080 | 75Hz | 4ms |  
1x HDMI\* 1.4, 1x VGA |  
VA Panel



24" Daily use Monitor

**Lenovo L24i-40**  
67A8KAC3MY

**RM449**

1920x1080 | 100Hz | 4ms |  
1x HDMI\* 1.4, 1x VGA | 3w x 2 |  
Metal Stand phone holder |  
IPS Panel



27" Daily use Monitor

**Lenovo L27i-40**  
67ABKAC4MY

**RM549**

1920x1080 | 100Hz | 4ms |  
2x HDMI\* 1.4, 1x VGA | 3w x 2 |  
Metal Stand phone holder |  
IPS Panel



27" Daily use Monitor

**Lenovo L27m-30**  
66D0KAC2MY

**RM709**

1920x1080 | 75Hz | 4ms |  
1x HDMI\* 1.4, 1x VGA | 3w x 2 |  
LTPS Stand | 1x USB-C\* 3.2 Gen  
1 | IPS Panel



29" Daily use Monitor

**Lenovo L29w-30**  
66E5GAC3MY

**RM729**

2560x1080 | 90Hz | 4ms |  
1x HDMI\* 1.4, 1x DP 1.2 |  
3w x 2 | LTPS Stand |  
IPS Panel



27" Gaming Monitor

**Lenovo G27q-30**  
66E8GAC2MY

**RM999**

2560x1440 | 165Hz | 1ms |  
2x HDMI\* 2.0, 1x DP 1.4 |  
3w x 2 | VA Panel



25" Gaming Monitor

**Lenovo Legion**  
**Y25-30**  
66F0GACBMY

**RM1,049**

1920x1080 | 280Hz (OC) |  
2x HDMI\* 2.0, 1x DP 1.4 | 0.5ms |  
3w x 2 | IPS Panel

## Lenovo L15 mobile monitor

Daily Use

**Lenovo L15**

66E4UAC1WW

**RM799**

 15.6" FHD,  
250nit brightness

 60 Hz refresh  
rate

 Connect via USB  
Type-C cable

 TÜV Rheinland  
Low Blue Light  
Flicker Free

## Lenovo Accessories



Multi-Pairing,  
Multi-Surface



vMulti-Location



Multi-Option,  
Multi-Charging



**Lenovo Go Wireless**  
**Multi-Device Mouse**  
GY51C21211 (Storm Grey)

**RM219**

1200 DPI, 2.4 GHz Wireless, 1 AA battery



**Lenovo 530 Wireless Mouse**

GY50Z18990 (Cherry Red)  
GY50Z18984 (Platinum Grey)  
GY50Z49089 (Graphite Grey)  
GY50Z18988 (Almond)  
GY50Z18986 (Abyss Blue)

**RM53**

**Lenovo Legion K500 RGB**  
**Mechanical Gaming Keyboard**  
GY40T26478

**RM329**



Red mechanical switch, 16.8 million RGB colour,  
104 keys anti-ghosting, Game mode key, media keys,  
backlight brightness key



**Lenovo Legion M300s**  
**RGB Gaming Mouse**

GY51H47350 (Black)  
GY51H47351 (Glacier White)

**RM109**

Up to 8,000 DPI, 57g,  
6 programmable buttons



**Lenovo Yoga Mouse**  
**with Laser Presenter**

GY50U59626 (Iron Grey)  
GY51B37795 (Shadow Black)

**RM209**

Up to 1,600 DPI, Dual-mode twist hinge  
design and integrated laser pointer



**Lenovo Legion M600**  
**Wireless Gaming Mouse**

GY50X79385 (Black)  
GY51C96033 (Stingray)

**RM299**

Up to 16,000 DPI, 107 g,  
9 programmable buttons

**Lenovo PS8 Portable SSD**

**512GB**  
GXB1M24159

**1TB**  
GXB1M24160

**2TB**  
GXB1M24161

**RM349**

**RM509**

**RM1155**



Portable size:  
D10mm x L 106mm x H 31 mm,

Read speeds of max 1,050 MB/s,  
write speeds of max 1,000 MB/s

Compatible with selected PC, MAC, and  
Android devices



**Lenovo Go USB-C Laptop**  
**Power Bank (20000 mAh)**  
GOA3LG2WWW

**RM459**



**Lenovo Legion H600**  
**Wireless Gaming Headset**  
GXD1A03963

**RM399**

Long battery life: Up to 20h,  
Low-latency 2.4GHz USB,  
Auto turn-off after 20 mins



**Lenovo Yoga Active Noise**  
**Cancellation Headphones**  
GXD1A39963 (Shadow Black)

**RM549**

Boom-less six microphones:  
4 for ANC, 4 for ENC  
Fully charge in 3 hours and 14  
hours playback

\* For selected Lenovo laptop models only. Terms and conditions apply. All promotions are applicable within the promotion period from 15 November - 31 December 2023 and while stocks last.

Products and oers subject to availability. Lenovo reserves the right to alter product oerings and specifications, at any time, without notice. Lenovo makes every eort to ensure accuracy of all information but is not liable or responsible for any editorial, photographic or typographic errors. Images are for illustration purposes only. For full Lenovo product, service and warranty specifications, visit [www.lenovo.com](http://www.lenovo.com). ©2023 Lenovo. All rights reserved. Promotions may be withdrawn or changed without prior notice. All other trademarks are the property of their respective owners. Microsoft, Windows, and Microsoft Teams are trademarks of the Microsoft group of companies. Lenovo Technology Sdn. Bhd. (685098-H)

# Lenovo CARES

Giving you peace of mind to know your investment and budget is protected from hassles in everyday situations while enjoying special rewards for Lenovo devices.

## Lenovo Premium Care Onsite Warranty

Advanced Support from real people. Real fast.

Premium Care Support Hotline:

**1800-818-614**



### REAL PERSON

Expert Technicians  
available  
(24/7, 9am - 9pm)



### REAL FAST

Fast resolutions, on your  
first contact



### HASSLE-FREE

'How-to' support for  
hardware and software



### 3<sup>RD</sup> PARTY SOFTWARE SUPPORT



For more information,  
please scan the QR code to  
log on to

[www.lenovo.com/my/en/  
premium-care](http://www.lenovo.com/my/en/premium-care)

## Legion Ultimate Support

Advanced Support for Legion devices

Legion Ultimate Support Hotline:

**1800-818-614**



Gamer-centric  
technicians



Onsite support  
(9am to 9pm)



24/7/365  
chat, email and phone



Help with hardware,  
software and tuning  
optimizations



For more information,  
please scan the QR code to  
log on to

[www.lenovo.com/my/en/  
legion-ultimate-support](http://www.lenovo.com/my/en/legion-ultimate-support)

## Lenovo Accidental Damage Protection (ADP)

Covers you beyond your normal warranty giving you peace of mind



Screen Crack



Liquid Spilled



Electrical Surge



Accidental Falls



For more information,  
please scan the QR code to  
log on to

[www.lenovo.com/my/  
en/ADP](http://www.lenovo.com/my/en/ADP)