



# UniFlood M G2

## BVP353 16LED RGBWW 220V L18 30 DMX

1550 lm - 30 W K

Philips UniFlood M gen2 is a cost-effective, exterior-rated architectural LED floodlight that's designed for facade, landscape and outdoor flood lighting applications. The robust, modular, rectangular design features highly efficient optics, making it ideal for illuminating everything from multi-storey facades and bridges to landmarks and monuments. ;This LED floodlight is available in white, monochromatic colours, RGB, RGBW and tunable white. It comes with six different spread lenses ranging from narrow spot to wide flood and has DMX512/RDM control option. A truly modular floodlight that gives architects and designers the freedom to explore a wide range of concepts and designs with no limitations.

### Warnings and Safety

- For outdoor use only.

### Product data

General Information	
Lamp colour code	RGBW
Driver included	Yes
Optical cover/lens type	GC [ Clear glass]
Control interface	Dynamic DMX/RDM
Connection	Flying leads/wires and 2 push-in connectors 4-pole
Cable	Cable 0.5 m without plug 3-pole and 2 cables 0.5 m with connector 4-pole
Protection class IEC	Safety class I (I)
Flammability mark	F [ For mounting on normally flammable surfaces]
CE mark	CE mark

Operating and Electrical	
Input Voltage	220 to 240 V
Input frequency	50 to 60 Hz
Power factor (min.)	0.8

Controls and Dimming	
Dimmable	Yes

Mechanical and Housing	
Housing material	Aluminum extruded
Optical cover/lens material	Acrylate
Overall length	183 mm
Overall width	140 mm

## UniFlood M G2

Overall height	149 mm
Effective projected area	0.029 m <sup>2</sup>
Colour	Dark Grey

### Approval and Application

Ingress protection code	IP66 [ Dust penetration-protected, jet-proof]
Mech. impact protection code	IK06 [ 1 J]

### Initial Performance (IEC Compliant)

Initial luminous flux (system flux)	1550 lm
Luminous flux tolerance	+/-10%
Initial LED luminaire efficacy	52 lm/W
Lamp colour temperature	- K
Colour Rendering Index	>80
Initial input power	30 W
Power consumption tolerance	+/-10%

### Application Conditions

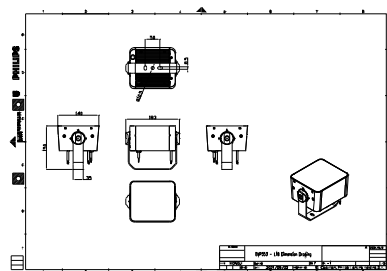
Ambient temperature range	-40 to +50 °C
---------------------------	---------------

### Product Data

Full product code	871951492524399
Order product name	BVP353 16LED RGBWW 220V L18 30 DMX
EAN/UPC – product	8719514925243
Order code	911401746033
SAP numerator – quantity per pack	1
Numerator – packs per outer box	8
SAP material	911401746033



## Dimensional drawing



BVP353 16LED RGBWW 220V L18 30 DMX

