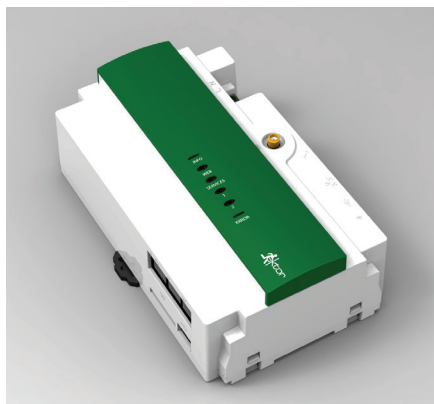




CODE:6120



CODE:6100



CONTENTS

1. Welcome
2. Safety Warnings
3. Advanced Wide Access Controller
4. Why Use an AWAC
5. Installation
6. AWAC Contents
7. AWAC Description
8. Functions and Status
9. AWAC Commissioning
10. Accessories List
11. Product Specifications
12. Warranty Information
13. Compliance Standards
14. Technical Support and Troubleshooting

1. WELCOME

Thank you for choosing this quality Ektor product. This manual is intended to help you install this product in a way that ensures the safety of yourself and others. Whilst this Ektor product is designed to be installed easily, we highly recommend you take the time to read this manual thoroughly before commencing installation. When installed correctly and serviced regularly, this product will provide hassle free operation for many years.

2. SAFETY WARNING

- 1. THIS PRODUCT MUST ONLY BE INSTALLED BY A LICENSED ELECTRICIAN.
- 2. BEFORE COMMENCING INSTALLATION TURN OFF AND ISOLATE THE ELECTRICAL SUPPLY.
- 3. DO NOT TOUCH THE TERMINAL BLOCK OR CIRCUITRY WHEN THE AWAC IS ENERGIZED.
- 4. THERE ARE NO USER SERVICEABLE PARTS. DO NOT ATTEMPT TO SERVICE ANY PARTS OF THE AWAC AS THIS WILL VOID THE WARRANTY.
- 5. AS THE INSTALLER, IT IS YOUR RESPONSIBILITY TO ENSURE YOU COMPLY TO ALL RELEVANT BUILDING AND SAFETY CODES FOR EXAMPLE THE BCA, AS3000. REFER TO APPLICATION STANDARDS FOR THE RELEVANT RULES.
- 6. WHEN INSTALLATION IS COMPLETE, PLEASE LEAVE THIS MANUAL WITH THE BUILDING'S OWNER/S FOR FUTURE REFERENCE.

3. ADVANCED WIRED ACCESS CONTROLLER

The Advanced Wide Access Controller (AWAC) from Ektor is a complete solution for emergency monitoring and testing. Utilizing the power of an ARM processor, emergency testing and monitoring enters a new era. The standalone AWAC system is able to perform all your testing and monitoring requirements without needing a server or more expensive testing systems. This system also has the capability of supporting an almost unlimited number of wired emergency devices.

4. WHY USE THE AWAC

Straight out of the box one of the many features of the AWAC is its ability to commission and fault find on the network with an iPhone or other smart phone, as well as logging and reporting tests and maintenance. Its GUI web interface makes commissioning and reporting easy(PC with TCP/IP access to the AWAC required). The AWAC system can also connect to multiple AWAC devices via Cat5 to create larger networks and email reports and logs (with additional internet connection, SMTP server, or additional 3G wireless card). In addition the AWAC features optional Server test software for on-site testing and optional Web 2.0 hosting for remote logging and testing.

FEATURE	
SMSing	WITH ADDITIONAL MODELS
Email	VIA INTERNET CONNECTION
Smart device/iPhone compatible	✓
2.0 Webserver	✓
Server test software for on-site testing	OPTIONAL
Web 2.0 hosting for logging/testing	OPTIONAL

5. INSTALLATION

The AWAC can be installed in two ways - either as a small system or as a large system.

5.1 AWAC wiring diagram Below is the suggested wiring diagram for the AWAC to a basic standalone emergency system. It is suggested that the AWAC is installed at the distribution board. Each WAC can support 2 lines of 64 emergency devices.

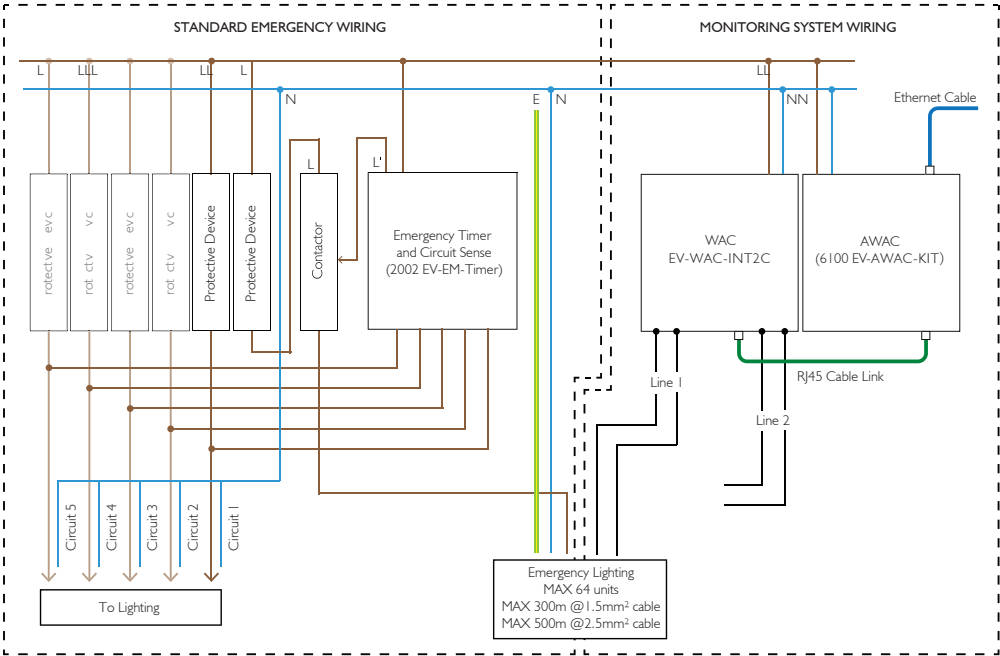


Figure 1: Monitored System Wiring

5.2 Interconnecting AWACs Multiple AWACs can be connected together to create a larger system. Using cat5 cable each AWAC can be connected to an Ethernet/IP router. Multiple Ethernet routers can be connected together to form a larger system. Other devices such as PCs, smart devices, wireless routers and even an internet modem can be connected to this system. **NOTE:** The network needs to support 10/100 switching. If wireless routers are connected to the systems they should ideally be placed in a position to give the maximum coverage throughout the building.

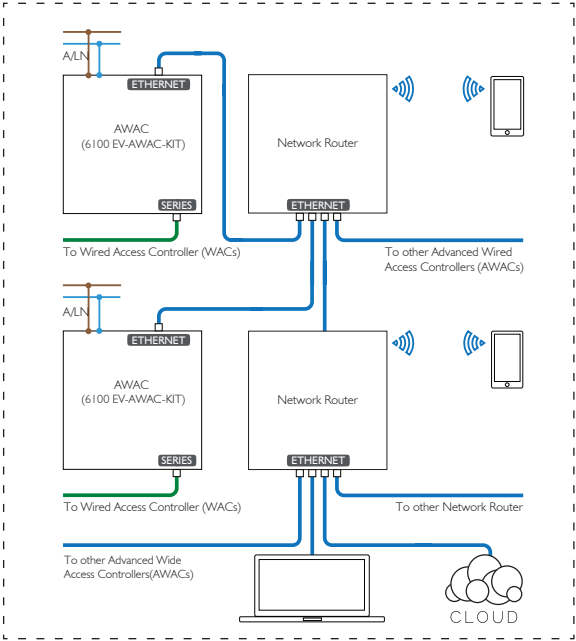


Figure 2: Interconnecting AWACs

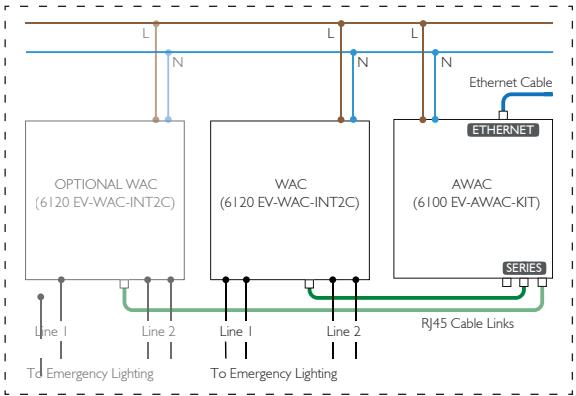


Figure 3: Monitored System Wiring Close-up

5.2 Building wide installations Below is a typical example of a building layout. Ideally an AWAC should be placed on each floor and connected to a central router. It is possible to wire a number of floors to a single AWAC as long as the maximum cables runs are not exceeded. Smaller networks are easier to commission and control, however each line can support up to 64 emergency devices.

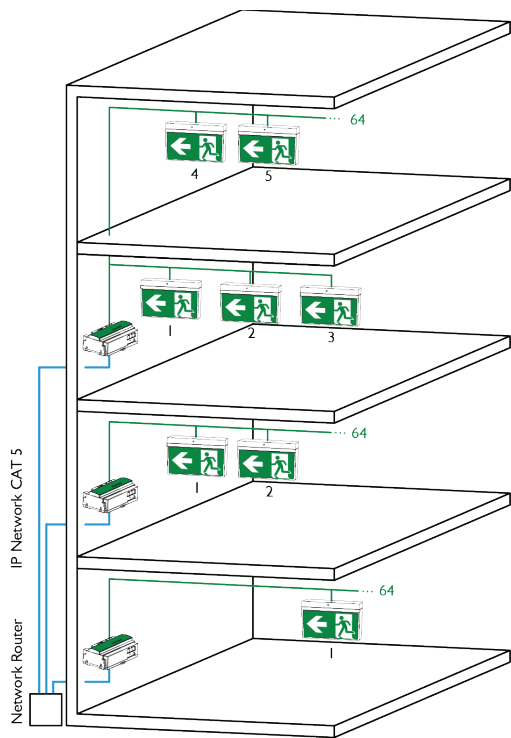
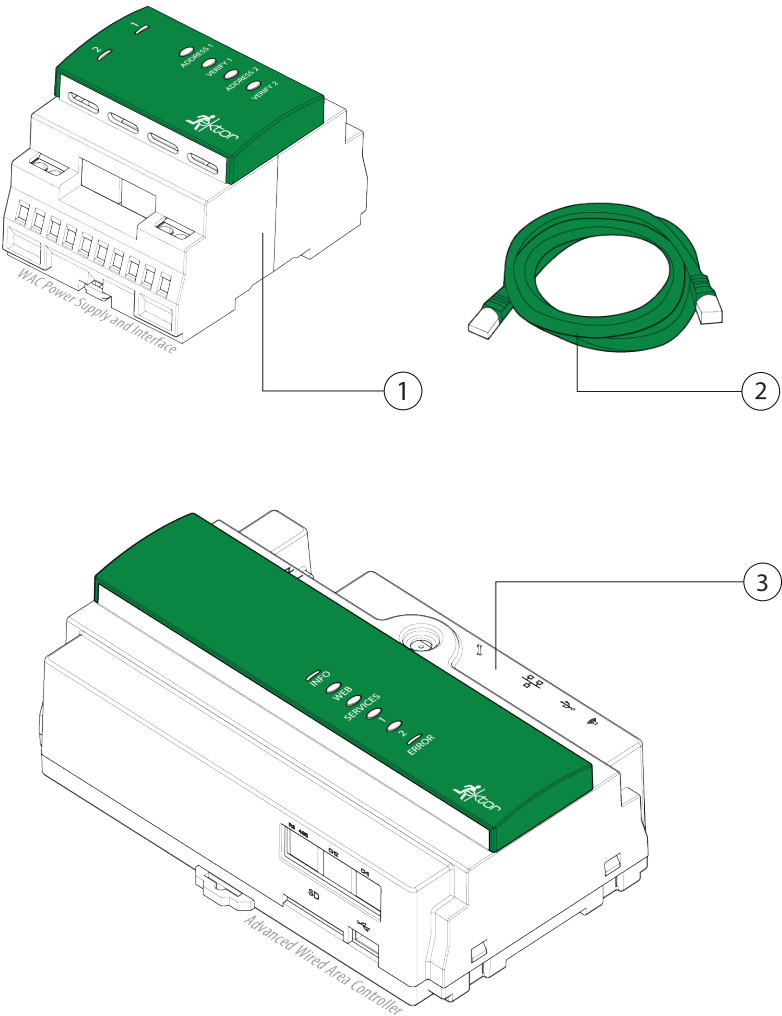


Figure 4: Typical Building Layout

6. AWAC CONTENTS

The AWAC is sold as one kit including:

- ① 1x Wired Access Controller (WAC)
- ② 1x Green Interlinking Cable
- ③ 1x Advanced WideAccess Controller (AWAC)



7. AWAC DESCRIPTION

AWAC description:

- (A) INFO
- (B) WEB
- (C) SERVICES
- (1) SERVICES 1
- (2) SERVICES 2
- (D) ERROR

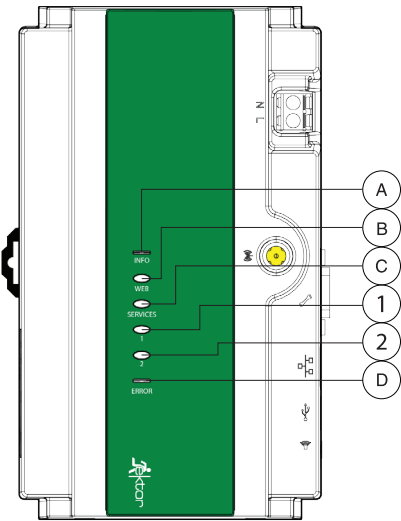


Figure 4: AWAC functions

WAC description:

- (A) ADDRESS 1
- (B) VERIFY 1
- (C) ADDRESS 2
- (D) VERIFY 2
- (1) INDICATOR 1
- (2) INDICATOR 2

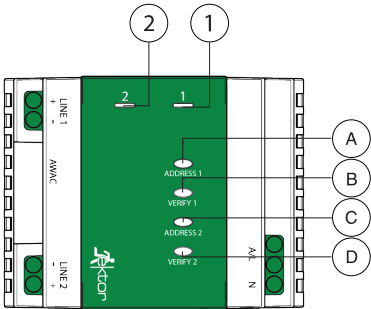
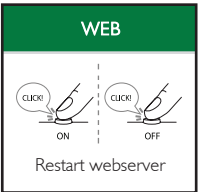


Figure 5: WAC functions

8. AWAC FUNCTIONS AND STATUS

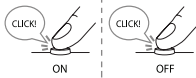

The table below shows the status indicators of the buttons and status LEDs.

INDICATOR	STATUS	DESCRIPTION
INFO	ON SHORT FLASHING 1 SEC CONTINUOUS	Working A button has been pressed and a function begins A button is being pressed and held
WEB	ON FLASHING	Webserver is on Webserver is off/restarting
SERVICES 1 + 2	NOT USED	
ERROR	ON FLASHING	System running Input error



9.WAC COMMISSIONING

Below details the method used to commission the WAC, its dual function control system buttons:

	DALI LINE 1		DALI LINE 2	
	Ⓐ	Ⓑ	Ⓒ	Ⓓ
MOMENTARY SWITCH 	ON/OFF Power on/off for line 1	IDENTIFY Check if all are plugged into DALI line 1	ON/OFF Power on/off for line 2	IDENTIFY Check if all are plugged into DALI line 2
PRESS & HOLD 	ADDRESS Addressed DALI line 1 will finish on its own	IDENTIFY ADDRESSED DEVICES Check if all devices are addressed	ADDRESS Addressed DALI line 2. will finish on its own	IDENTIFY ADDRESSED DEVICES Check if all devices are adressed

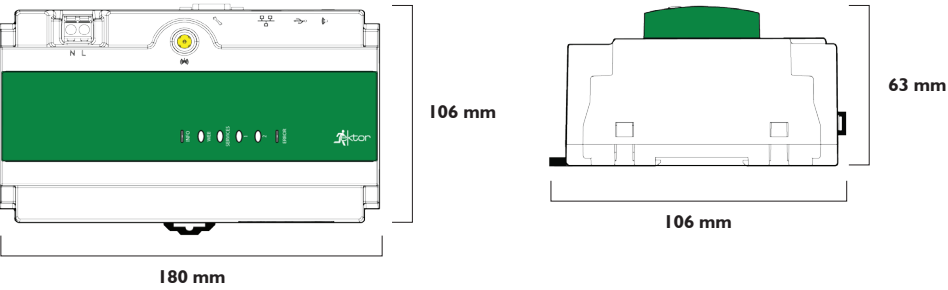
10. ACCESSORIES LIST

Below are the listings of the compatible accessories for use with the AWAC.

PART	EVOLT CODE	CODE
WIRED ACCESS CONTROLLER (WAC)	EV-WAC-INT2C	6120
INTERLINK CABLE	EM-TIMER-INTERLINK	6122
EMERGENCY TIMER	EV-EM-TIMER	2002
EMERGENCY TIMER ASSEMBLY	EV-EM-TIMER ASM	2003

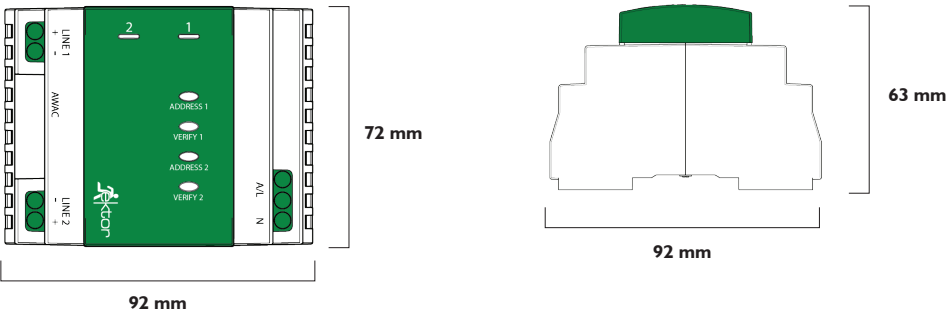
II. PRODUCT SPECIFICATIONS

ADVANCED WIDE ACCESS CONTROLLER (AWAC)



Operating voltage (V)	230VAC	Wiring	6mm terminals
Operating frequency (Hz)	50Hz	AWAC Weight	197 grams
Operating Current	0.08A	Mounting Surface	Field mounted DIN Rail (35mm)
Operating Temperature	0 to 50°C		
IP Rating	IP20	Mains Connection	Screw terminal for 1 - 4mm ² cable

WIRED ACCESS CONTROLLER (WAC)



Operating voltage (V)	230VAC	Wiring	6mm terminals
Operating frequency (Hz)	50Hz	WAC Weight	175 grams
Operating Current	<0.086A	Mounting Surface	Field mounted DIN Rail (35mm)
Operating Temperature	0 to 50°C		
IP Rating	IP20	Mains Connection	Screw terminal for 1 - 4mm ² cable

12. WARRANTY INFORMATION

Ektor products are distributed in Australia and New Zealand by Evolt Pty Ltd (**Evolt**).

The Australian Consumer Law as well as other Australian laws guarantee certain conditions, warranties and undertakings, and give you other legal rights, in relation to the quality and fitness for purpose of Ektor products sold in Australia.

In Australia, our goods come with guarantees that cannot be excluded under the Australian Consumer Law. You are entitled to a replacement or refund for a major failure and compensation for any other reasonably foreseeable loss or damage. You are also entitled to have the goods repaired or replaced if the goods fail to be of acceptable quality and the failure does not amount to a major failure. What constitutes a major failure is set out in the Australian Consumer Law.

Nothing in this Warranty purports to modify or exclude the conditions, warranties and undertakings, and other legal rights, under the Australian Competition and Consumer Act and other Australian laws.

Ektor products are warranted in Australia for a period of 12 months from the date of delivery of the product, provided that the products are properly stored, installed, used and maintained in accordance with the instructions contained within their manual.

Products that have been altered in any way or used other than in accordance with their instructions are not covered by this warranty.

This warranty is not transferrable and is valid only in the hands of the purchaser of the product. The warranty does not cover Ektor products other than those purchased from Evolt. Proof of purchase must be provided to Evolt with any warranty claim. Evolt recommends that the purchaser attaches their proof of purchase to their product manual.



Evolt's total liability under this warranty is limited to the cost of repair or replacement of the faulty product. Evolt may satisfy its obligations under this warranty in full by repair or replacement of a faulty product.

This warranty does not apply to consumable items such as lamps or batteries or other items that can be classified as consumable.

For the avoidance of any doubt, any and all warranties or conditions which are not guaranteed under the Australian Competition and Consumer Act or the Australian Competition and Consumer Regulations 2010 and which are not expressly included in this Warranty as additional warranties or conditions are excluded.

This Warranty does not cover loss or damage caused by wear and tear, misuse, incorrect installation or operation, failure to clean and maintain, incorrect voltage or non-authorised electrical connections, adverse external conditions (such as power surges and dips, acts of God, exposure to heat, corrosion, insect or vermin infestation), use of non-authorised or defective parts or globes, or to items that have been repaired other than by Evolt or a repairer approved by Evolt.

13. COMPLIANCE STANDARDS

	STANDARD	TITLE
<p>Australian/ New Zealand Standards</p> 	AS/NZS 2293.1	Emergency escape lighting and exit signals for buildings. Part 1: System design, installation and operation.
	AS/NZS 61347-2-11	Particular requirements for miscellaneous electronic circuits used with luminaires. (IEC 61347-2-11:2001 MOD)
<p>European Committee for Standardisation</p> 	EN 61347-2-11	Particular requirements for miscellaneous electronic circuits used with luminaires.
	EN 61547	Specification for equipment for general lighting purposes. EMC immunity requirements.
	EN 55015	Limits and methods of measurement of radio disturbance characteristics of electrical lighting and similar equipment.

14. TECHNICAL SUPPORT AND TROUBLESHOOTING

For further assistance in using this product, consult your nearest wholesaler or Evolt Pty Limited.

Ph: + 612 9502 1161
Fax: + 612 9502 1154
Email: sales@evolt.com.au
evolt.com.au

Reference: 2015-110315 604418 VI.4

evolt PRO-USE
the electrical evolution