

User Manual



iPad Active Capacitive Stylus Pen

Product Details



Product Specifications:

Material: Aluminum Alloy
Palm Rejection Function: Yes
Input: 5V-0.1A
Pressure sensitivity: No
Bluetooth: No
Pen Head: Replaceable Pen Head

Applicable Model:

iPad 2018(6th gen) A1893 / A1954
iPad 2019(7th gen) A2197 / A2198 / A2200
iPad 2020(8th gen) A2270 / A2428 / A2429 / A2430
iPad Air (3rd gen) A2152 / A2153 / A2154 / A2123
iPad mini (5th gen) A2124 / A2125 / A2126 / A2133
iPad Pro 11 inches (2018-2020)
A1980 / A2013 / A1934 / A1979 / A2228 / A2068 / A2230 / A2231
iPad Pro 12.9 inches (2018-2020)
A1876 / A2014 / A1895 / A1983 / A2229 / A2069 / A2032 / A2233

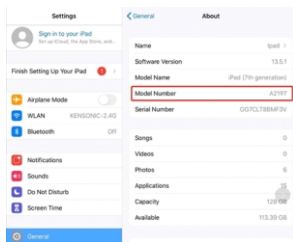
Note: Please confirm that the above models are universal and other models are invalid.

Not work with

iPad Pro 12.9 inch (1st gen & 2nd gen)
A1584 / A1652 / A1670 / A1671 / A1821
iPad Pro (10.5 inch) A1701 / A1709 / A1852
iPad Pro (9.7 inch) A1673 / A1674 / A1675
iPad Air (1st gen & 2nd gen)
A1474 / A1475 / A1476 / A1566 / A1567
iPad mini (1st / 2nd / 3th / 4th gen)
A1432 / A1454 / A1455 / A1489 / A1490 / A1491 / A1599 / A1600 / A1538 / A1550
iPad 2010 (1st gen) A1219 / A1337
iPad 2011 (2nd gen) A1395 / A1396 / A1397
iPad 2012 (3th gen & 4th gen)
A1416 / A1430 / A1403 / A1458 / A1459 / A1460
iPad 2017 (5th gen) A1822 / A1823

How to confirm the model

1. Settings > General > About > Model Number



2. Please confirm on the back of iPad device



Warm Tips

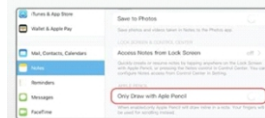
1. Please follow these steps to make sure the Active Stylus is allowed to work in your iPad or iPad Pro:

Go to Settings > Apple Pencil > Turn off the Apple Pencil.

Settings > Notes > Turn off *Only Draw with Apple Pencil.



1. Go to Settings > Apple Pencil > Turn off the Apple Pencil.



2. Settings > Notes > Turn off *Only Draw with Apple Pencil.

2. Please turn off the Bluetooth connection before using our stylus pen if you have connected the "apple pencil". No need to install Bluetooth or Apps, Touch the top of the stylus pen and begin to use it.

3. Please ensure the stylus is enough battery power when using. Please don't use the pen while charging.

4. All iPad IOS systems must be updated to iOS 12.2 or above.

5. It has a better user experience if used with the tempered glass screen protector.

How to Use

1. Turn on/off

Touch the top of the capacitive pen to turn it on, and the indicator light turns blue to start using it. Touch the capacitive pen again to turn off the indicator, and the indicator light is off.



2. Charging

Use a Type-C charging cable to charge the Pencil. The indicator will be red while charging, and turn off when it is fully charged. Crew it anticlockwise to hide the charging port.



3. Magnetic

Pencil can be magnetic stored on the iPad Pro 12.9-inch (3rd generation), iPad Pro 11-inch.

Do not support wireless charging.



Replace the pen tip

Twirl the pen tip and pull it out, then insert a new pen tip and twirl it tightly. Screw-type nibs are easier to replace and don't break easily.



Warranty & Customer Support

For any questions, support or warranty claims you can contact us via website, amazon or the contact info given below.

Please share your order number and the product model number.

Our customer team will help you out as soon as possible.

There are four ways to CONTACT US:

- 1) Email: support@caseu.in
- 2) Official Website: www.caseu.in
- 3) Go to Amazon order page
"Your orders" - "sold by" - "Contact Seller"
- 4) You can directly call us on our
Customer care number: +91 93159 83114