

UK Product Manual	FR Manuel du produit	DE Produkthandbuch
ES Manual del producto	IT Manuale del prodotto	NL Producthandleiding
PL Instrukcja obsługi	CS Ruční výrobek	TR Ürün Kılavuzu
NO Brukerveiledning	SV Produkthandbok	DA Produktmanual
JA 製品マニュアル		

FCC compliance statements:

This device complies with Part 15 of the FCC Rules .

Operation is subject to the following two conditions:

1. This device may not cause harmful interference, and
2. This device must accept any interference received, including interference that may cause undesired operation.

NOTE: Changes or modifications not expressly approved by the party responsible for compliance could void the user's authority to operate the equipment.

NOTE: This equipment has been tested and found to comply with the limits for a Class B digital device, pursuant to Part 15 of the FCC Rules. These limits are designed to provide reasonable protection against harmful interference in a residential installation. This equipment generates, uses, and can radiate radio frequency energy and, if not installed and used in accordance with the instructions, may cause harmful interference to radio communications.

However, there is no guarantee that interference will not occur in a particular installation. If this equipment does cause harmful interference to radio or television reception, which can be determined by turning the equipment off and on, the user is encouraged to try to correct the interference by one or more of the following measures:

- Reorient or relocate the receiving antenna.
- Increase the separation between the equipment and receiver.
- Connect the equipment into an outlet on a circuit different from that to which the receiver is connected.
- Consult the dealer or an experienced radio/TV technician for help.

This equipment complies with radiation exposure limits set forth for an uncontrolled environment.

This equipment should be installed and operated with a minimum distance of 7-7/8" (200 mm)

between the radiator and your body. The transmitter must not be co-located or operated in conjunction with any other antenna or transmitter.

R&TTE Compliance statement:

This device is in compliance with the essential requirements and other relevant provisions of the R&TTE directive 1999/5/EC.

A copy of the declaration of conformity may be obtained by contacting Rada customer services department. See back cover for details.

WARNING! This device contains a lithium-ion battery.

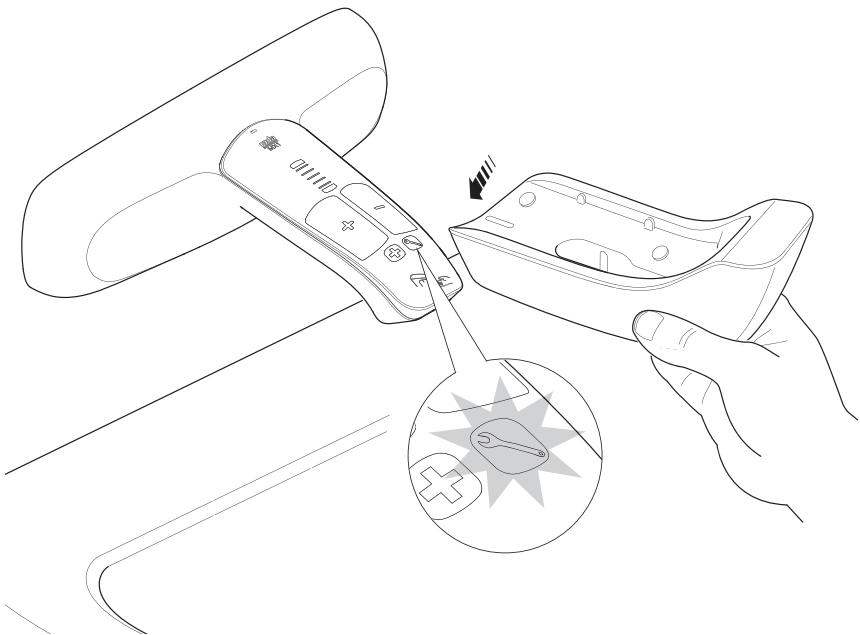
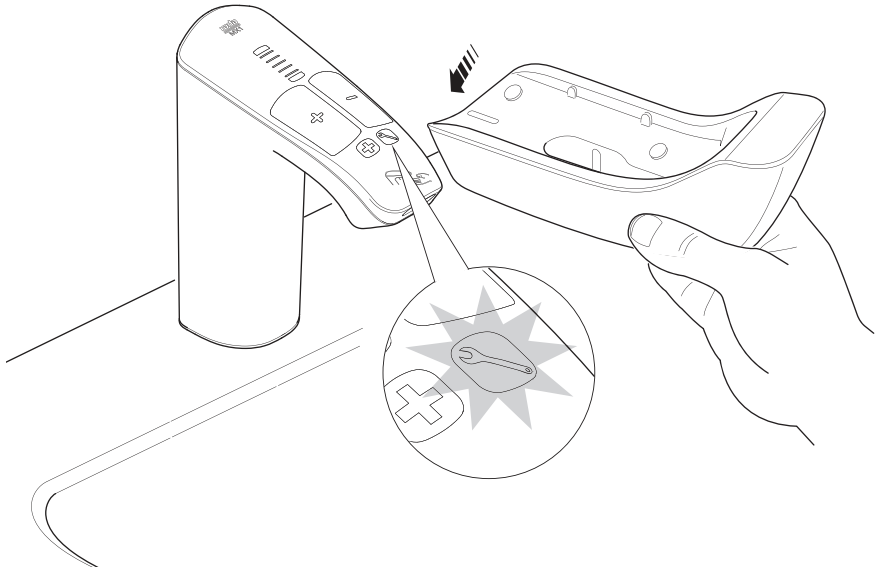
- Do not expose to direct sunlight, fire, or other forms of excessive heat.
- Do not expose the device to temperatures above 60°C.
- Do not submerge or spray water directly into the device.

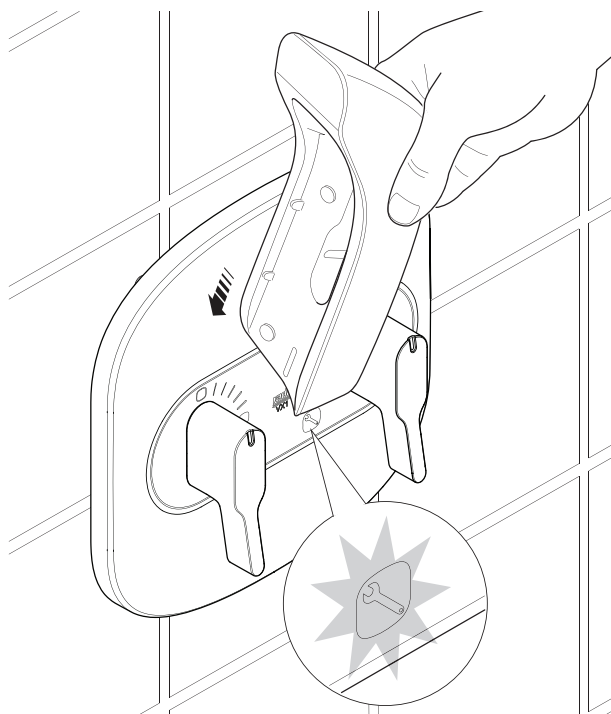
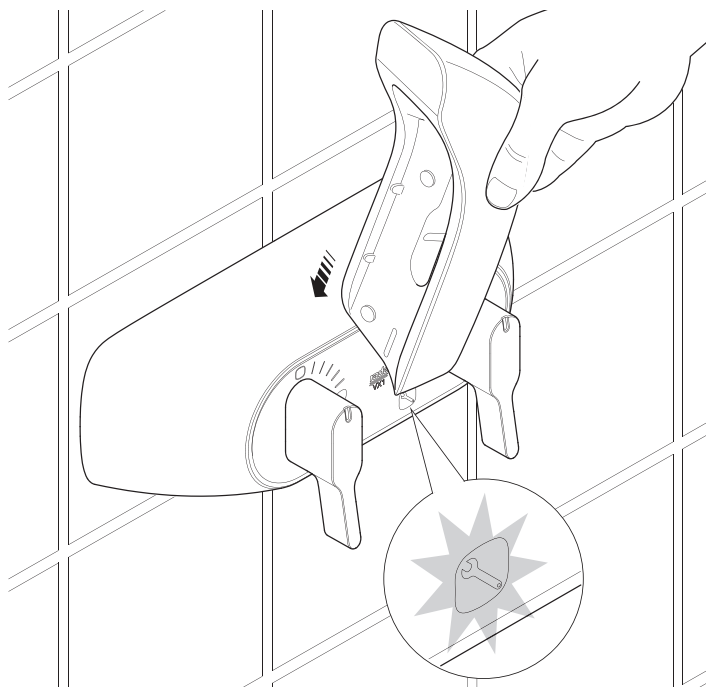
Disposal and Recycling



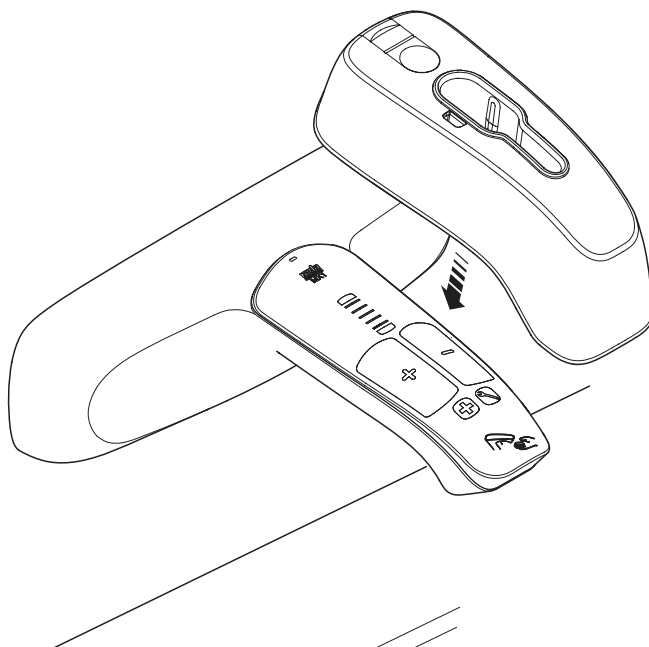
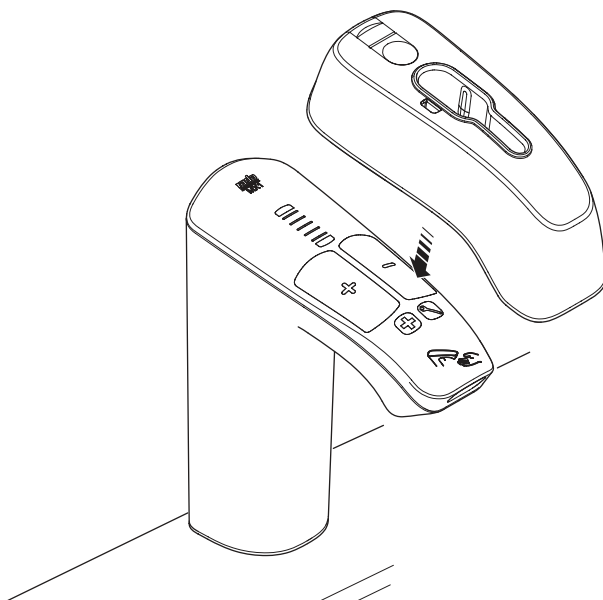
This symbol indicates that this product must not be disposed of with your household waste. Instead, it is your responsibility to dispose of your waste equipment by handing it over to a designated collection point for the recycling of waste electrical and electronic equipment. The separate collection and recycling of your waste equipment at the time of disposal will help to conserve natural resources and ensure it is recycled in a manner that protects human health and the environment. For more information about where you can drop off your waste equipment for recycling, please contact your local council office, your household waste disposal service or the shop where you purchased the product.

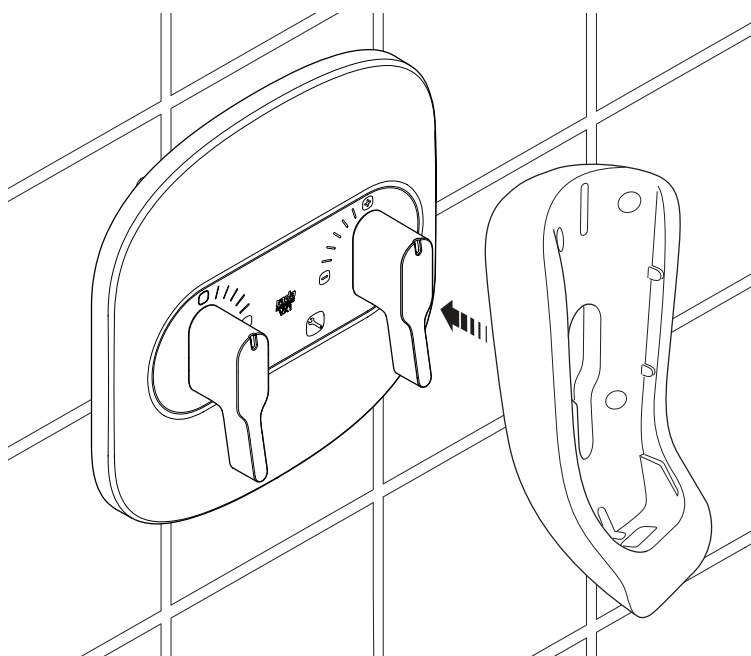
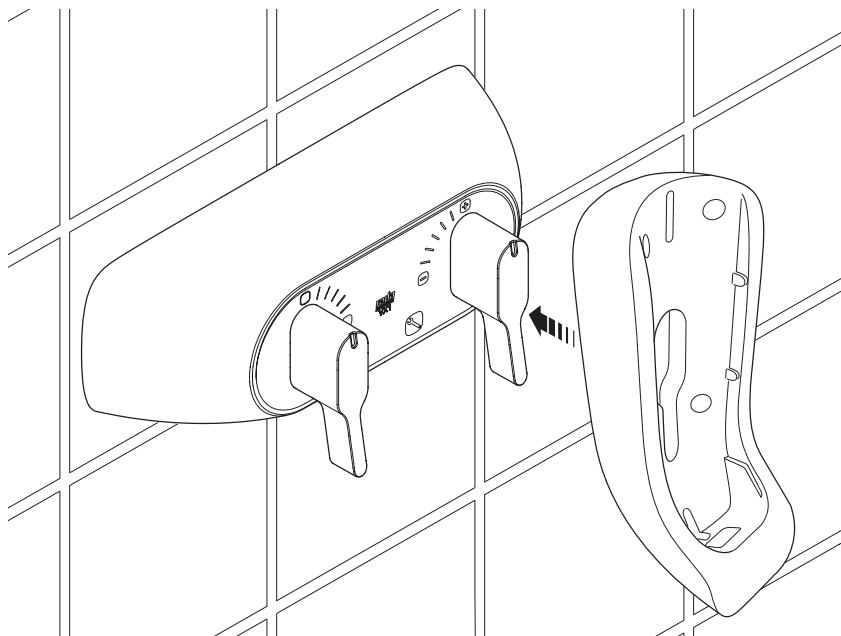
1 De-activate the Tap/Shower

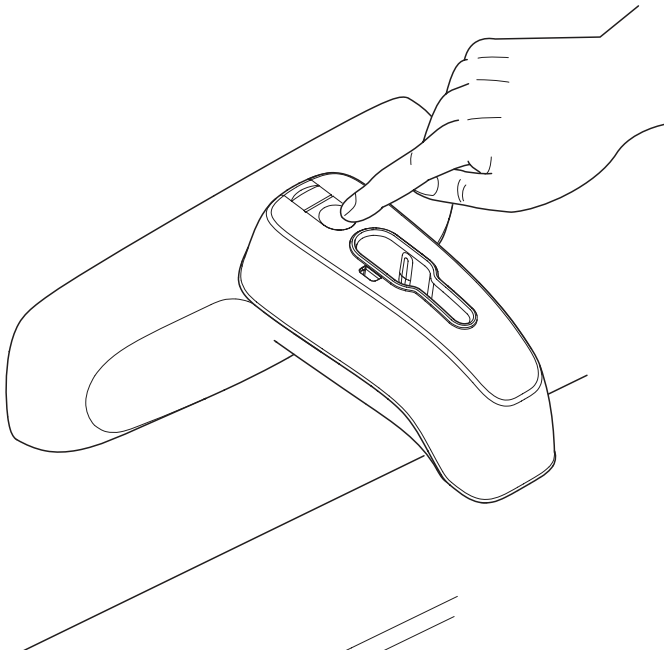
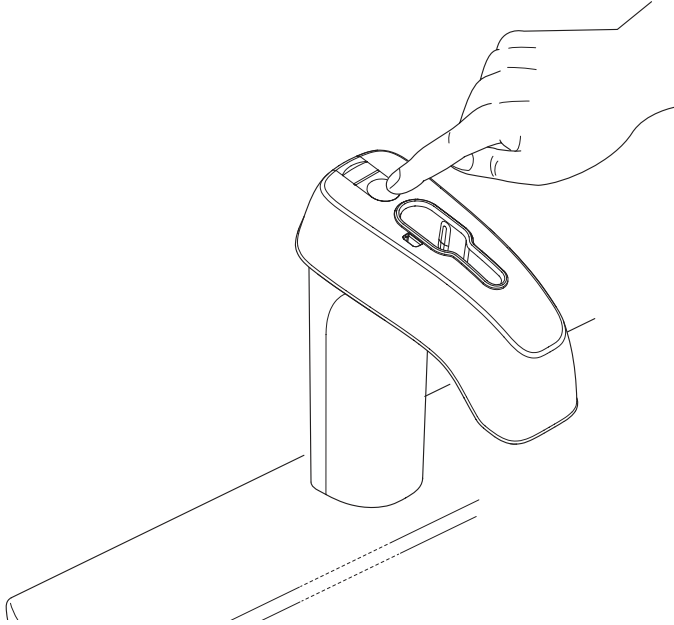


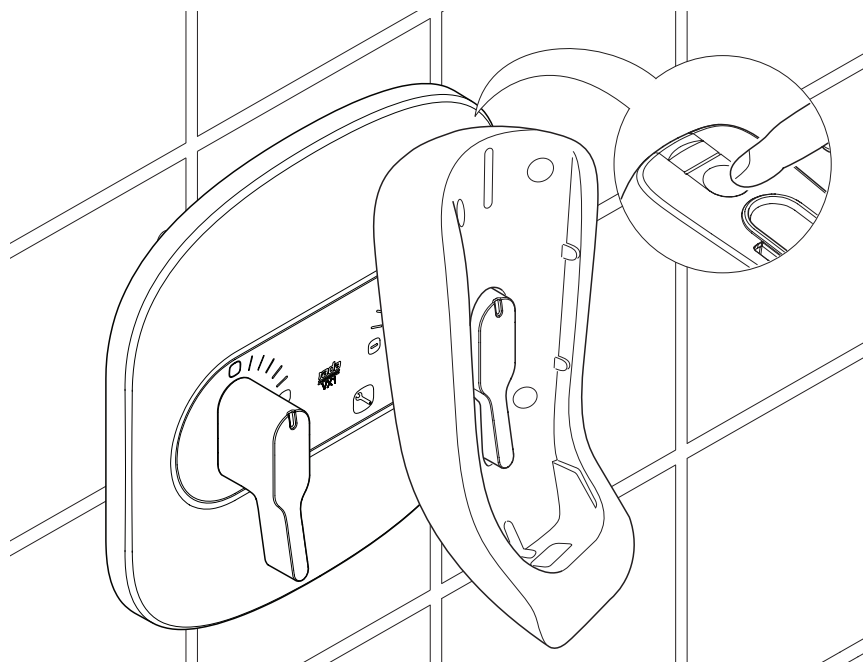
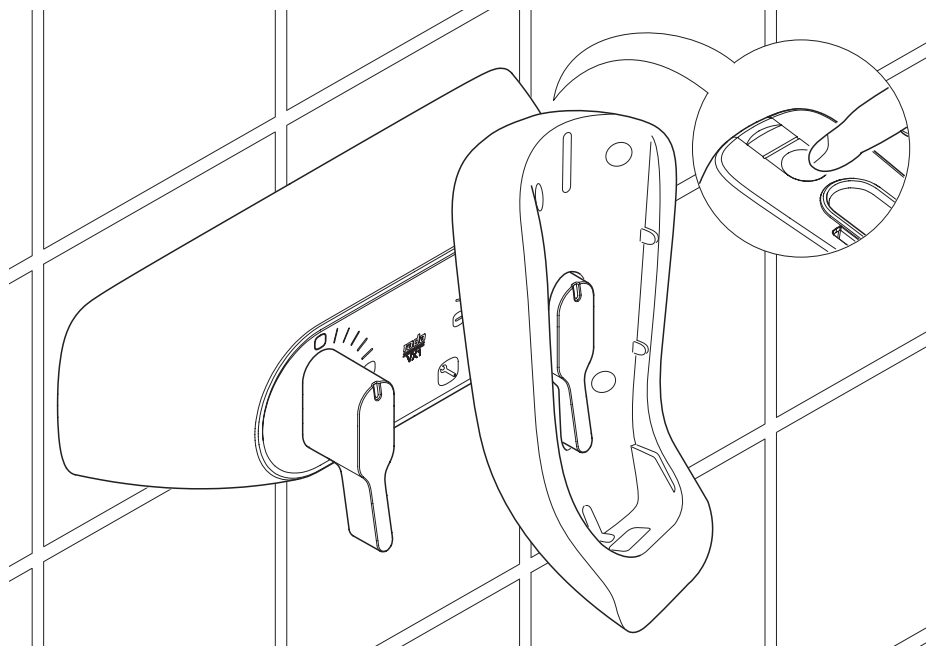


2 Fit the Communicator

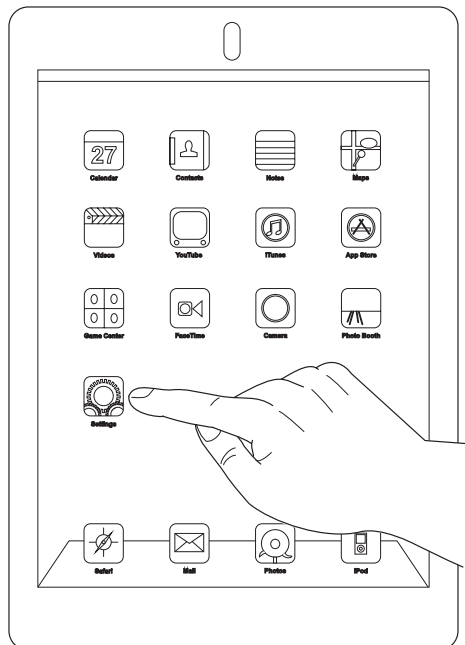
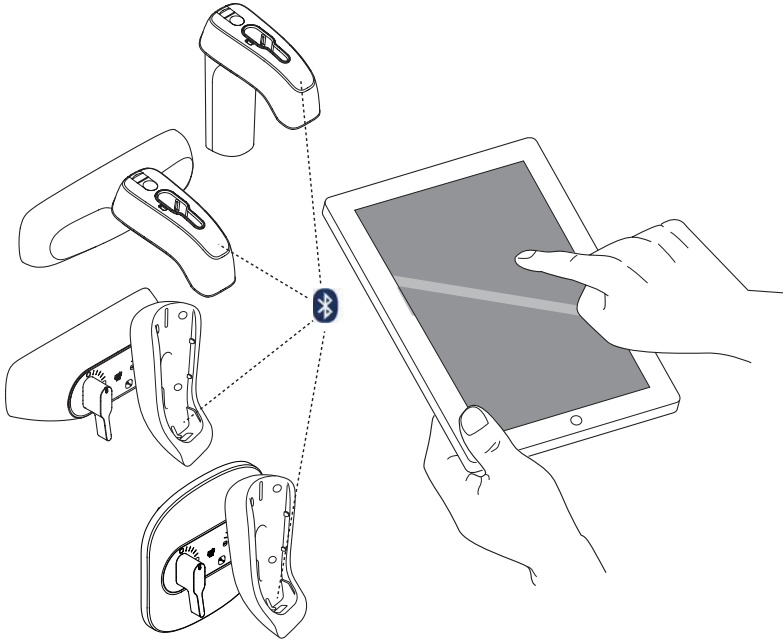


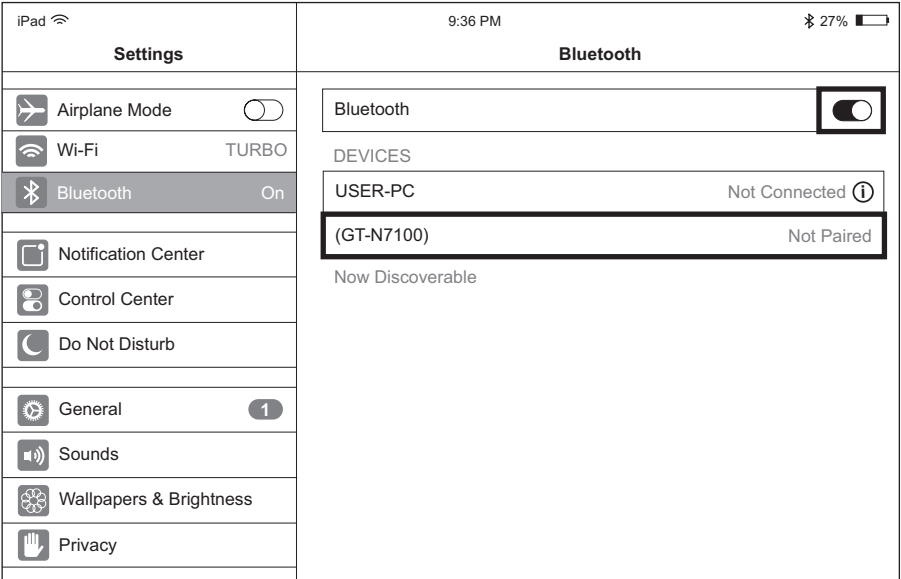
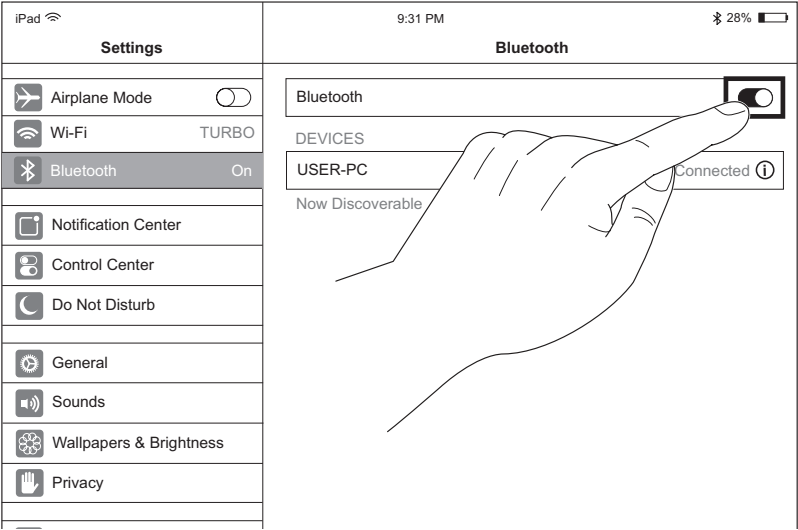


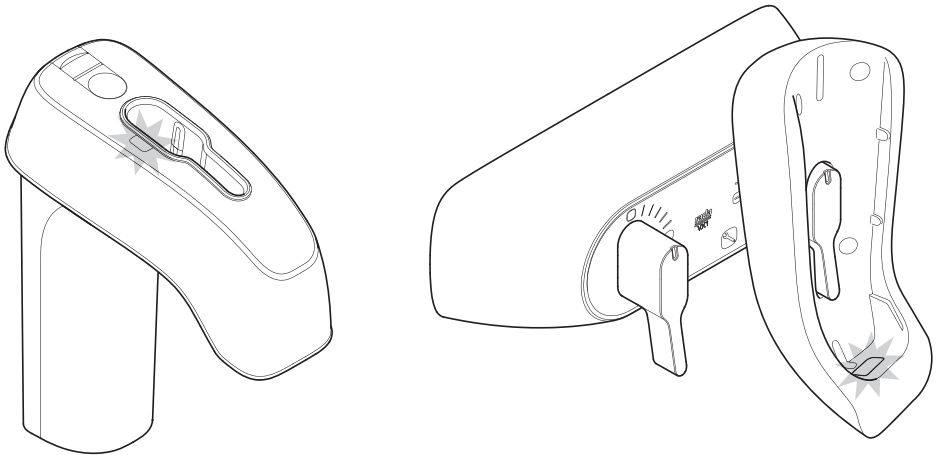
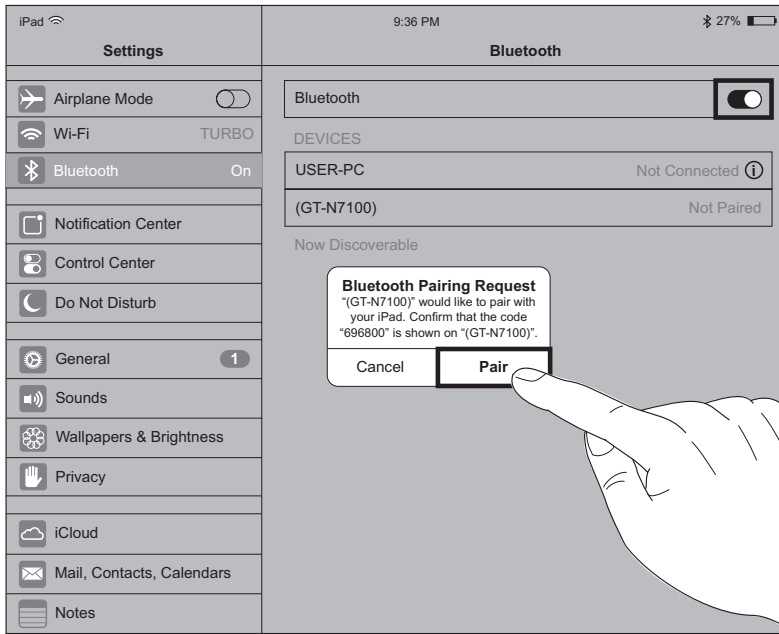
3**Turn on the Communicator**



3 Pair the Communicator (iPad Shown)

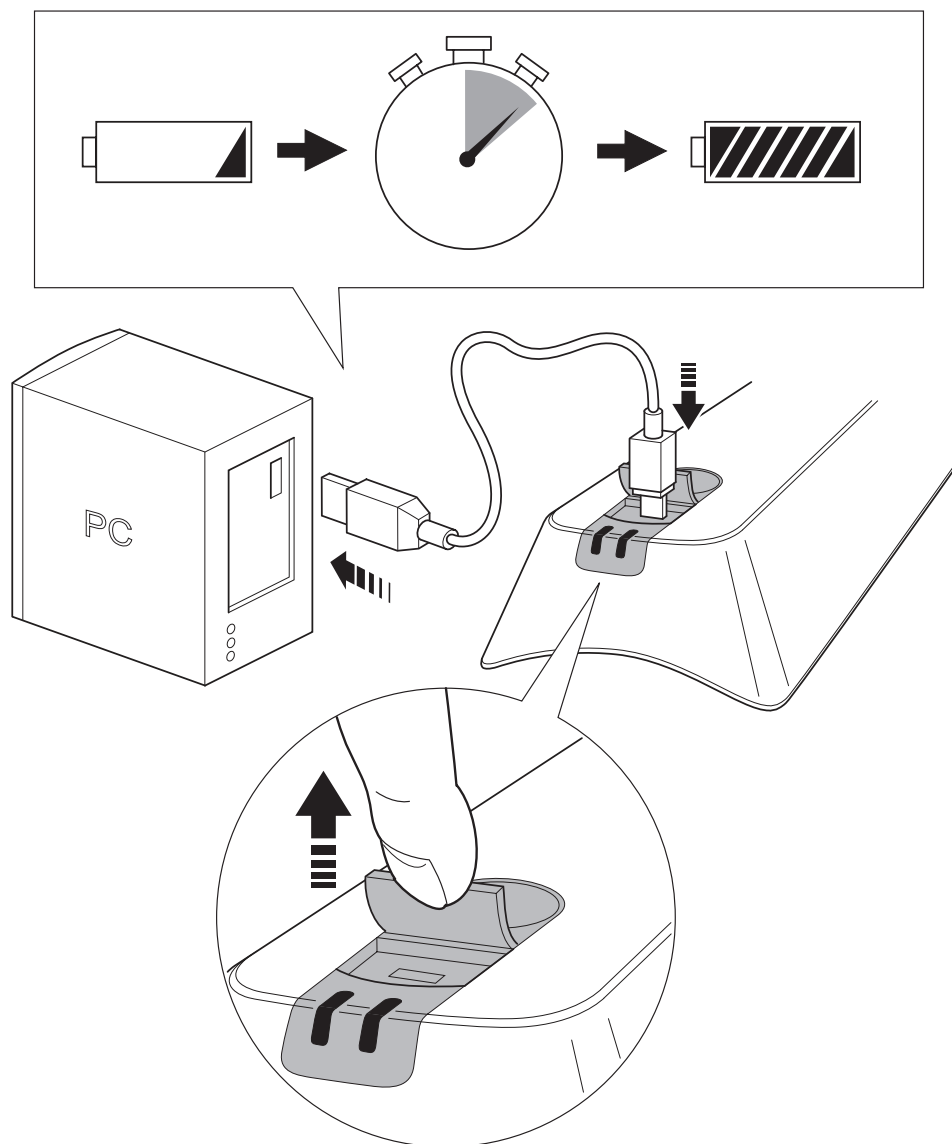






To program the tap/shower, refer to the programming manual.

4 Charge the Communicator



#

This device complies with Part 15 of the FCC Rules and with RSS-247 of Industry Canada.

Operation is subject to the following two conditions:

(1) This device may not cause harmful interference, and (2) this device must accept any interference received, including interference that may cause undesired operation.

Le présent appareil est conforme aux CNR d'Industrie Canada applicables aux appareils radio exempts de licence.

L'exploitation est autorisée aux deux conditions suivantes : (1) l'appareil ne doit pas produire de brouillage, et

(2) l'utilisateur de l'appareil doit accepter tout brouillage radioélectrique subi, même si le brouillage est susceptible d'en compromettre le fonctionnement.

This Class B digital apparatus complies with Canadian ICES-003.

Cet appareil numérique de la classe B est conforme à la norme NMB-003 du Canada.

When using the product, maintain a distance of 20cm from the body to ensure compliance with RF exposure requirements.