



FCC SAR TEST REPORT

FCC ID : UZ7TC210K
Equipment : Touch computer
Brand Name : Zebra
Model Name : TC210K
Applicant : Zebra Technologies Corporation
1 Zebra Plaza Holtsville, NY 11742
Manufacturer : Zebra Technologies Corporation
1 Zebra Plaza Holtsville, NY 11742
Standard : FCC 47 CFR Part 2 (2.1093)
ANSI/IEEE C95.1-1992
IEEE 1528-2013

The product was received on Jan. 23, 2020 and testing was started from Feb. 23, 2020 and completed on Feb. 26, 2020. We, SPORTON INTERNATIONAL INC., would like to declare that the tested sample has been evaluated in accordance with the test procedures and has been in compliance with the applicable technical standards.

The report must not be used by the client to claim product certification, approval, or endorsement by TAF or any agency of government.

The test results in this report apply exclusively to the tested model / sample. Without written approval of SPORTON INTERNATIONAL INC. EMC & Wireless Communications Laboratory, the test report shall not be reproduced except in full.

Approved by: Cona Huang / Deputy Manager

SPORTON INTERNATIONAL INC. EMC & Wireless Communications Laboratory
No. 52, Huaya 1st Rd., Guishan Dist., Taoyuan City, Taiwan (R.O.C.)



Table of Contents

1. Statement of Compliance 4

2. Guidance Applied..... 4

3. Equipment Under Test (EUT) Information 5

 3.1 General Information 5

4. RF Exposure Limits..... 6

 4.1 Uncontrolled Environment..... 6

 4.2 Controlled Environment..... 6

5. Specific Absorption Rate (SAR)..... 7

 5.1 Introduction 7

 5.2 SAR Definition..... 7

6. System Description and Setup 8

 6.1 E-Field Probe 9

 6.2 Data Acquisition Electronics (DAE) 9

 6.3 Phantom.....10

 6.4 Device Holder.....11

7. Measurement Procedures12

 7.1 Spatial Peak SAR Evaluation.....12

 7.2 Power Reference Measurement.....13

 7.3 Area Scan13

 7.4 Zoom Scan.....14

 7.5 Volume Scan Procedures.....14

 7.6 Power Drift Monitoring.....14

8. Test Equipment List15

9. System Verification16

 9.1 Tissue Simulating Liquids.....16

 9.2 Tissue Verification17

 9.3 System Performance Check Results.....18

10. RF Exposure Positions19

 10.1 Ear and handset reference point.....19

 10.2 Definition of the cheek position20

 10.3 Definition of the tilt position21

 10.4 Body Worn Accessory22

 10.5 Hand Exposure22

11. WiFi/Bluetooth Output Power (Unit: dBm).....23

12. Antenna Location.....28

13. SAR Test Results29

 13.1 Head SAR30

 13.2 Body Worn Accessory SAR.....31

 13.3 Product Specific SAR.....32

 13.4 Repeated SAR Measurement33

14. Uncertainty Assessment34

15. References.....34

Appendix A. Plots of System Performance Check

Appendix B. Plots of High SAR Measurement

Appendix C. DASy Calibration Certificate

Appendix D. Test Setup Photos



1. Statement of Compliance

The maximum results of Specific Absorption Rate (SAR) found during testing for **Zebra Technologies Corporation, Touch computer, TC210K**, are as follows.

Equipment Class	Frequency Band	Highest SAR Summary		
		Head (Separation 0mm)	Body-worn (Separation 0mm)	Product Specific (Separation 0mm)
		1g SAR (W/kg)		10g SAR (W/kg)
DTS	2.4GHz WLAN	1.40	0.12	1.18
NII	5GHz WLAN	1.34	0.81	2.78
DSS	Bluetooth	0.02	< 0.01	0.02
Date of Testing:		2020/2/23 ~ 2020/2/26		

Sporton Lab is accredited to ISO 17025 by Taiwan Accreditation Foundation (TAF code: 1190) and the FCC designation No. TW1190 under the FCC 2.948(e) by Mutual Recognition Agreement (MRA) in FCC test This device is in compliance with Specific Absorption Rate (SAR) for general population/uncontrolled exposure limits (1.6 W/kg for Partial-Body 1g SAR, 4.0 W/kg for Hand 10g SAR) specified in FCC 47 CFR part 2 (2.1093) and ANSI/IEEE C95.1-1992, and had been tested in accordance with the measurement methods and procedures specified in IEEE 1528-2013 and FCC KDB publications

Reviewed by: Jason Wang
Report Producer: Daisy Peng

2. Guidance Applied

The Specific Absorption Rate (SAR) testing specification, method, and procedure for this device is in accordance with the following standards:

- FCC 47 CFR Part 2 (2.1093)
- ANSI/IEEE C95.1-1992
- IEEE 1528-2013
- FCC KDB 865664 D01 SAR Measurement 100 MHz to 6 GHz v01r04
- FCC KDB 865664 D02 SAR Reporting v01r02
- FCC KDB 447498 D01 General RF Exposure Guidance v06
- FCC KDB 648474 D04 SAR Evaluation Considerations for Wireless Handsets v01r03
- FCC KDB 248227 D01 802.11 Wi-Fi SAR v02r02
- FCC KDB 941225 D07 UMPC Mini Tablet v01r02



3. Equipment Under Test (EUT) Information

3.1 General Information

Product Feature & Specification	
Equipment Name	Touch computer
Brand Name	Zebra
Model Name	TC210K
FCC ID	UZ7TC210K
Wireless Technology and Frequency Range	WLAN 2.4GHz Band: 2412 MHz ~ 2462 MHz WLAN 5.2GHz Band: 5180 MHz ~ 5240 MHz WLAN 5.3GHz Band: 5260 MHz ~ 5320 MHz WLAN 5.5GHz Band: 5500 MHz ~ 5720 MHz WLAN 5.8GHz Band: 5745 MHz ~ 5825 MHz Bluetooth: 2402 MHz ~ 2480 MHz NFC : 13.56 MHz
Mode	WLAN: 802.11a/b/g/n/ac/ax HT20 / HT40 / VHT20 / VHT40 / VHT80 Bluetooth BR/EDR/LE NFC:ASK
HW Version	Meteor_EV1_MB_V11
OS Version	Android version 10
SW Version	FUSION_QA_2_1.0.0.007_Q
FW Version	Zebra/TC21MG/TC21:10/03-08-17.00-QG-U00-PRD/88:userdebug/release-keys
MFD	27DEC19
Sample1	WLAN, GMS, SE4710, NFC, 3G/32GB, Rear camera, 2-pin connector
Sample2	WLAN, GMS, No scanner, NFC, 3G/32GB, Front & Rear camera, 2-pin connector
EUT Stage	Engineering sample
Remark:	
1. This device has 2 samples that difference is scanner, RF exposure choose sample 1 w/o scanner to evaluate main SAR test, sample 2 with scanner verified the worst cases of sample 1.	

Specification of Accessories				
AC Adapter	Brand Name	Zebra	Part Number	PWR-WUA5V12W0US
AC Adapter	Brand Name	Zebra	Part Number	PWR-WUA5V12W0EU
Battery 1	Brand Name	Zebra	Part Number	BT-000409-00
Battery 2	Brand Name	Zebra	Part Number	BT-000410-50
Battery 3	Brand Name	Zebra	Part Number	BT-000411-08
Adapter Cable PTT headset(3.5mm to 3.5mm)	Brand Name	Zebra	Part Number	CBL-TC5X-USBC2A-01
Headset 3.5mm type with PTT/micassy	Brand Name	Zebra	Part Number	HDST-35MM-PTVP-01
Headset Adapter Cable	Brand Name	Zebra	Part Number	CBL-TC51-HDST35-01
Snap on Trigger handle	Brand Name	Zebra	Part Number	TRG-TC2Y-SNP1-01
Belt Holster	Brand Name	Zebra	Part Number	SG-TC2Y-HLSTR1-01
Wearable Arm Mount	Brand Name	Zebra	Part Number	SG-TC2Y-ARMNT-01

Support Unit used in test configuration and system					
Equipment	Trade name	Model name	FCC ID	Data Cable	Power cord
Type C to 3.5mm headset adaptor	Google	Pixel-2-2XL	N/A	N/A	N/A



4. RF Exposure Limits

4.1 Uncontrolled Environment

Uncontrolled Environments are defined as locations where there is the exposure of individuals who have no knowledge or control of their exposure. The general population/uncontrolled exposure limits are applicable to situations in which the general public may be exposed or in which persons who are exposed as a consequence of their employment may not be made fully aware of the potential for exposure or cannot exercise control over their exposure. Members of the general public would come under this category when exposure is not employment-related; for example, in the case of a wireless transmitter that exposes persons in its vicinity.

4.2 Controlled Environment

Controlled Environments are defined as locations where there is exposure that may be incurred by persons who are aware of the potential for exposure, (i.e. as a result of employment or occupation). In general, occupational/controlled exposure limits are applicable to situations in which persons are exposed as a consequence of their employment, who have been made fully aware of the potential for exposure and can exercise control over their exposure. The exposure category is also applicable when the exposure is of a transient nature due to incidental passage through a location where the exposure levels may be higher than the general population/uncontrolled limits, but the exposed person is fully aware of the potential for exposure and can exercise control over his or her exposure by leaving the area or by some other appropriate means.

Limits for Occupational/Controlled Exposure (W/kg)

Whole-Body	Partial-Body	Hands, Wrists, Feet and Ankles
0.4	8.0	20.0

Limits for General Population/Uncontrolled Exposure (W/kg)

Whole-Body	Partial-Body	Hands, Wrists, Feet and Ankles
0.08	1.6	4.0

1. Whole-Body SAR is averaged over the entire body, partial-body SAR is averaged over any 1gram of tissue defined as a tissue volume in the shape of a cube. SAR for hands, wrists, feet and ankles is averaged over any 10 grams of tissue defined as a tissue volume in the shape of a cube.

5. Specific Absorption Rate (SAR)

5.1 Introduction

SAR is related to the rate at which energy is absorbed per unit mass in an object exposed to a radio field. The SAR distribution in a biological body is complicated and is usually carried out by experimental techniques or numerical modeling. The standard recommends limits for two tiers of groups, occupational/controlled and general population/uncontrolled, based on a person's awareness and ability to exercise control over his or her exposure. In general, occupational/controlled exposure limits are higher than the limits for general population/uncontrolled.

5.2 SAR Definition

The SAR definition is the time derivative (rate) of the incremental energy (dW) absorbed by (dissipated in) an incremental mass (dm) contained in a volume element (dv) of a given density (ρ). The equation description is as below:

$$SAR = \frac{d}{dt} \left(\frac{dW}{dm} \right) = \frac{d}{dt} \left(\frac{dW}{\rho dv} \right)$$

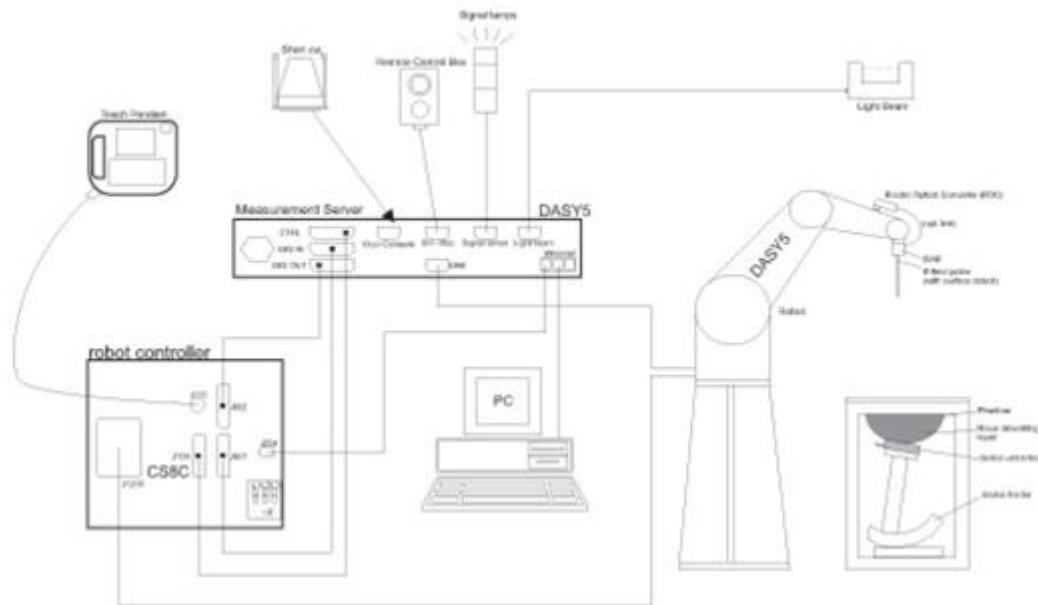
SAR is expressed in units of Watts per kilogram (W/kg)

$$SAR = \frac{\sigma |E|^2}{\rho}$$

Where: σ is the conductivity of the tissue, ρ is the mass density of the tissue and E is the RMS electrical field strength.

6. System Description and Setup

The DASY system used for performing compliance tests consists of the following items:




- A standard high precision 6-axis robot with controller, teach pendant and software. An arm extension for accommodating the data acquisition electronics (DAE).
- An isotropic Field probe optimized and calibrated for the targeted measurement.
- A data acquisition electronics (DAE) which performs the signal amplification, signal multiplexing, AD-conversion, offset measurements, mechanical surface detection, collision detection, etc. The unit is battery powered with standard or rechargeable batteries. The signal is optically transmitted to the EOC.
- The Electro-optical converter (EOC) performs the conversion from optical to electrical signals for the digital communication to the DAE. To use optical surface detection, a special version of the EOC is required. The EOC signal is transmitted to the measurement server.
- The function of the measurement server is to perform the time critical tasks such as signal filtering, control of the robot operation and fast movement interrupts.
- The Light Beam used is for probe alignment. This improves the (absolute) accuracy of the probe positioning.
- A computer running WinXP or Win7 and the DASY5 software.
- Remote control and teach pendant as well as additional circuitry for robot safety such as warning lamps, etc.
- The phantom, the device holder and other accessories according to the targeted measurement.


6.1 E-Field Probe

The SAR measurement is conducted with the dosimetric probe (manufactured by SPEAG). The probe is specially designed and calibrated for use in liquid with high permittivity. The dosimetric probe has special calibration in liquid at different frequency. This probe has a built in optical surface detection system to prevent from collision with phantom.

<ES3DV3 Probe>

Construction	Symmetric design with triangular core Interleaved sensors Built-in shielding against static charges PEEK enclosure material (resistant to organic solvents, e.g., DGBE)	
Frequency	10 MHz – 4 GHz; Linearity: ± 0.2 dB (30 MHz – 4 GHz)	
Directivity	± 0.2 dB in TSL (rotation around probe axis) ± 0.3 dB in TSL (rotation normal to probe axis)	
Dynamic Range	5 μ W/g – >100 mW/g; Linearity: ± 0.2 dB	
Dimensions	Overall length: 337 mm (tip: 20 mm) Tip diameter: 3.9 mm (body: 12 mm) Distance from probe tip to dipole centers: 3.0 mm	

<EX3DV4 Probe>

Construction	Symmetric design with triangular core Built-in shielding against static charges PEEK enclosure material (resistant to organic solvents, e.g., DGBE)	
Frequency	10 MHz – >6 GHz Linearity: ± 0.2 dB (30 MHz – 6 GHz)	
Directivity	± 0.3 dB in TSL (rotation around probe axis) ± 0.5 dB in TSL (rotation normal to probe axis)	
Dynamic Range	10 μ W/g – >100 mW/g Linearity: ± 0.2 dB (noise: typically <1 μ W/g)	
Dimensions	Overall length: 337 mm (tip: 20 mm) Tip diameter: 2.5 mm (body: 12 mm) Typical distance from probe tip to dipole centers: 1 mm	

6.2 Data Acquisition Electronics (DAE)

The data acquisition electronics (DAE) consists of a highly sensitive electrometer-grade preamplifier with auto-zeroing, a channel and gain-switching multiplexer, a fast 16 bit AD-converter and a command decoder and control logic unit. Transmission to the measurement server is accomplished through an optical downlink for data and status information as well as an optical uplink for commands and the clock.


The input impedance of the DAE is 200 MOhm; the inputs are symmetrical and floating. Common mode rejection is above 80 dB.



Fig 5.1 Photo of DAE

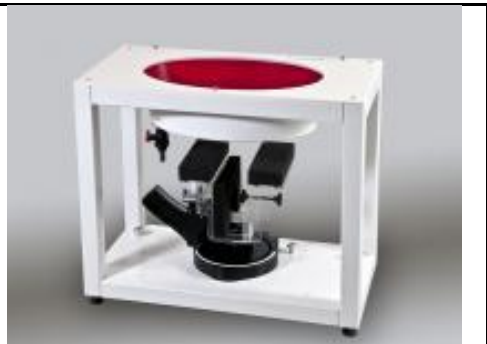
6.3 Phantom

<SAM Twin Phantom>

Shell Thickness	2 ± 0.2 mm; Center ear point: 6 ± 0.2 mm	
Filling Volume	Approx. 25 liters	
Dimensions	Length: 1000 mm; Width: 500 mm; Height: adjustable feet	
Measurement Areas	Left Hand, Right Hand, Flat Phantom	

The bottom plate contains three pair of bolts for locking the device holder. The device holder positions are adjusted to the standard measurement positions in the three sections. A white cover is provided to tap the phantom during off-periods to prevent water evaporation and changes in the liquid parameters. On the phantom top, three reference markers are provided to identify the phantom position with respect to the robot.

<ELI Phantom>

Shell Thickness	2 ± 0.2 mm (sagging: <1%)	
Filling Volume	Approx. 30 liters	
Dimensions	Major ellipse axis: 600 mm Minor axis: 400 mm	

The ELI phantom is intended for compliance testing of handheld and body-mounted wireless devices in the frequency range of 30 MHz to 6 GHz. ELI4 is fully compatible with standard and all known tissue simulating liquids.

6.4 Device Holder

<Mounting Device for Hand-Held Transmitter>

In combination with the Twin SAM V5.0/V5.0c or ELI phantoms, the Mounting Device for Hand-Held Transmitters enables rotation of the mounted transmitter device to specified spherical coordinates. At the heads, the rotation axis is at the ear opening. Transmitter devices can be easily and accurately positioned according to IEC 62209-1, IEEE 1528, FCC, or other specifications. The device holder can be locked for positioning at different phantom sections (left head, right head, flat). And upgrade kit to Mounting Device to enable easy mounting of wider devices like big smart-phones, e-books, small tablets, etc. It holds devices with width up to 140 mm.



Mounting Device for Hand-Held Transmitters



Mounting Device Adaptor for Wide-Phones

<Mounting Device for Laptops and other Body-Worn Transmitters>

The extension is lightweight and made of POM, acrylic glass and foam. It fits easily on the upper part of the mounting device in place of the phone positioned. The extension is fully compatible with the SAM Twin and ELI phantoms.



Mounting Device for Laptops

7. Measurement Procedures

The measurement procedures are as follows:

<Conducted power measurement>

- (a) For WWAN power measurement, use base station simulator to configure EUT WWAN transmission in conducted connection with RF cable, at maximum power in each supported wireless interface and frequency band.
- (b) Read the WWAN RF power level from the base station simulator.
- (c) For WLAN/BT power measurement, use engineering software to configure EUT WLAN/BT continuously transmission, at maximum RF power in each supported wireless interface and frequency band
- (d) Connect EUT RF port through RF cable to the power meter, and measure WLAN/BT output power

<SAR measurement>

- (a) Use base station simulator to configure EUT WWAN transmission in radiated connection, and engineering software to configure EUT WLAN/BT continuously transmission, at maximum RF power, in the highest power channel.
- (b) Place the EUT in the positions as Appendix D demonstrates.
- (c) Set scan area, grid size and other setting on the DASY software.
- (d) Measure SAR results for the highest power channel on each testing position.
- (e) Find out the largest SAR result on these testing positions of each band
- (f) Measure SAR results for other channels in worst SAR testing position if the reported SAR of highest power channel is larger than 0.8 W/kg

According to the test standard, the recommended procedure for assessing the peak spatial-average SAR value consists of the following steps:

- (a) Power reference measurement
- (b) Area scan
- (c) Zoom scan
- (d) Power drift measurement

7.1 Spatial Peak SAR Evaluation

The procedure for spatial peak SAR evaluation has been implemented according to the test standard. It can be conducted for 1g and 10g, as well as for user-specific masses. The DASY software includes all numerical procedures necessary to evaluate the spatial peak SAR value.

The base for the evaluation is a "cube" measurement. The measured volume must include the 1g and 10g cubes with the highest averaged SAR values. For that purpose, the center of the measured volume is aligned to the interpolated peak SAR value of a previously performed area scan.

The entire evaluation of the spatial peak values is performed within the post-processing engine (SEMCAD). The system always gives the maximum values for the 1g and 10g cubes. The algorithm to find the cube with highest averaged SAR is divided into the following stages:

- (a) Extraction of the measured data (grid and values) from the Zoom Scan
- (b) Calculation of the SAR value at every measurement point based on all stored data (A/D values and measurement parameters)
- (c) Generation of a high-resolution mesh within the measured volume
- (d) Interpolation of all measured values from the measurement grid to the high-resolution grid
- (e) Extrapolation of the entire 3-D field distribution to the phantom surface over the distance from sensor to surface
- (f) Calculation of the averaged SAR within masses of 1g and 10g

7.2 Power Reference Measurement

The Power Reference Measurement and Power Drift Measurements are for monitoring the power drift of the device under test in the batch process. The minimum distance of probe sensors to surface determines the closest measurement point to phantom surface. This distance cannot be smaller than the distance of sensor calibration points to probe tip as defined in the probe properties.

7.3 Area Scan

The area scan is used as a fast scan in two dimensions to find the area of high field values, before doing a fine measurement around the hot spot. The sophisticated interpolation routines implemented in DASY software can find the maximum found in the scanned area, within a range of the global maximum. The range (in dB) is specified in the standards for compliance testing. For example, a 2 dB range is required in IEEE standard 1528 and IEC 62209 standards, whereby 3 dB is a requirement when compliance is assessed in accordance with the ARIB standard (Japan), if only one zoom scan follows the area scan, then only the absolute maximum will be taken as reference. For cases where multiple maximums are detected, the number of zoom scans has to be increased accordingly.

Area scan parameters extracted from FCC KDB 865664 D01v01r04 SAR measurement 100 MHz to 6 GHz.

	≤ 3 GHz	> 3 GHz
Maximum distance from closest measurement point (geometric center of probe sensors) to phantom surface	5 ± 1 mm	$\frac{1}{2} \cdot \delta \cdot \ln(2) \pm 0.5$ mm
Maximum probe angle from probe axis to phantom surface normal at the measurement location	30° ± 1°	20° ± 1°
Maximum area scan spatial resolution: $\Delta x_{Area}, \Delta y_{Area}$	≤ 2 GHz: ≤ 15 mm 2 – 3 GHz: ≤ 12 mm	3 – 4 GHz: ≤ 12 mm 4 – 6 GHz: ≤ 10 mm
	When the x or y dimension of the test device, in the measurement plane orientation, is smaller than the above, the measurement resolution must be ≤ the corresponding x or y dimension of the test device with at least one measurement point on the test device.	

7.4 Zoom Scan

Zoom scans are used assess the peak spatial SAR values within a cubic averaging volume containing 1 gram and 10 gram of simulated tissue. The zoom scan measures points (refer to table below) within a cube shoes base faces are centered on the maxima found in a preceding area scan job within the same procedure. When the measurement is done, the zoom scan evaluates the averaged SAR for 1 gram and 10 gram and displays these values next to the job's label.

Zoom scan parameters extracted from FCC KDB 865664 D01v01r04 SAR measurement 100 MHz to 6 GHz.

		≤ 3 GHz	> 3 GHz	
Maximum zoom scan spatial resolution: $\Delta x_{Zoom}, \Delta y_{Zoom}$		≤ 2 GHz: ≤ 8 mm 2 – 3 GHz: ≤ 5 mm*	3 – 4 GHz: ≤ 5 mm* 4 – 6 GHz: ≤ 4 mm*	
Maximum zoom scan spatial resolution, normal to phantom surface	uniform grid: $\Delta z_{Zoom}(n)$	≤ 5 mm	3 – 4 GHz: ≤ 4 mm 4 – 5 GHz: ≤ 3 mm 5 – 6 GHz: ≤ 2 mm	
	graded grid	$\Delta z_{Zoom}(1)$: between 1 st two points closest to phantom surface	≤ 4 mm	3 – 4 GHz: ≤ 3 mm 4 – 5 GHz: ≤ 2.5 mm 5 – 6 GHz: ≤ 2 mm
		$\Delta z_{Zoom}(n>1)$: between subsequent points	$\leq 1.5 \cdot \Delta z_{Zoom}(n-1)$	
Minimum zoom scan volume	x, y, z	≥ 30 mm	3 – 4 GHz: ≥ 28 mm 4 – 5 GHz: ≥ 25 mm 5 – 6 GHz: ≥ 22 mm	
Note: δ is the penetration depth of a plane-wave at normal incidence to the tissue medium; see draft standard IEEE P1528-2011 for details. * When zoom scan is required and the <i>reported</i> SAR from the <i>area scan based 1-g SAR estimation</i> procedures of KDB 447498 is ≤ 1.4 W/kg, ≤ 8 mm, ≤ 7 mm and ≤ 5 mm zoom scan resolution may be applied, respectively, for 2 GHz to 3 GHz, 3 GHz to 4 GHz and 4 GHz to 6 GHz.				

7.5 Volume Scan Procedures

The volume scan is used for assess overlapping SAR distributions for antennas transmitting in different frequency bands. It is equivalent to an oversized zoom scan used in standalone measurements. The measurement volume will be used to enclose all the simultaneous transmitting antennas. For antennas transmitting simultaneously in different frequency bands, the volume scan is measured separately in each frequency band. In order to sum correctly to compute the 1g aggregate SAR, the EUT remain in the same test position for all measurements and all volume scan use the same spatial resolution and grid spacing. When all volume scan were completed, the software, SEMCAD postprocessor can combine and subsequently superpose these measurement data to calculating the multiband SAR.

7.6 Power Drift Monitoring

All SAR testing is under the EUT install full charged battery and transmit maximum output power. In DASY measurement software, the power reference measurement and power drift measurement procedures are used for monitoring the power drift of EUT during SAR test. Both these procedures measure the field at a specified reference position before and after the SAR testing. The software will calculate the field difference in dB. If the power drifts more than 5%, the SAR will be retested.



8. Test Equipment List

Manufacturer	Name of Equipment	Type/Model	Serial Number	Calibration	
				Last Cal.	Due Date
SPEAG	2450MHz System Validation Kit	D2450V2	929	Nov. 21, 2019	Nov. 20, 2020
SPEAG	5GHz System Validation Kit	D5GHzV2	1006	Sep. 27, 2018	Sep. 25, 2020
SPEAG	Data Acquisition Electronics	DAE4	376	Dec. 06, 2019	Dec. 05, 2020
SPEAG	Data Acquisition Electronics	DAE3	577	Sep. 17, 2019	Sep. 16, 2020
SPEAG	Data Acquisition Electronics	DAE4	1311	Aug. 27, 2019	Aug. 26, 2020
SPEAG	Dosimetric E-Field Probe	ES3DV3	3270	Sep. 25, 2019	Sep. 24, 2020
SPEAG	Dosimetric E-Field Probe	EX3DV4	3931	Sep. 26, 2019	Sep. 25, 2020
SPEAG	Dosimetric E-Field Probe	EX3DV4	7306	Jul. 22, 2019	Jul. 21, 2020
RCPTWN	Thermometer	HTC-1	TM685-1	Nov. 12, 2019	Nov. 11, 2020
RCPTWN	Thermometer	HTC-1	TM560-2	Nov. 12, 2019	Nov. 11, 2020
R&S	BT Base Station	CBT32	100522	Mar. 18, 2019	Mar. 17, 2020
SPEAG	Device Holder	N/A	N/A	N/A	N/A
Anritsu	Signal Generator	MG3710A	6201502524	Nov. 20, 2019	Nov. 19, 2020
Agilent	ENA Network Analyzer	E5071C	MY46104758	Sep. 06, 2019	Sep. 05, 2020
SPEAG	Dielectric Probe Kit	DAK-3.5	1126	Sep. 18, 2019	Sep. 17, 2020
LINE SEIKI	Digital Thermometer	DTM3000-spezial	3169	Sep. 10, 2019	Sep. 09, 2020
Anritsu	Power Meter	ML2495A	1036004	Aug. 08, 2019	Aug. 07, 2020
Anritsu	Power Sensor	MA2411B	1027253	Aug. 08, 2019	Aug. 07, 2020
Anritsu	Power Meter	ML2495A	1419002	May. 29, 2019	May. 28, 2020
Anritsu	Power Sensor	MA2411B	1339124	May. 29, 2019	May. 28, 2020
Agilent	Spectrum Analyzer	E4408B	MY44211028	Aug. 27, 2019	Aug. 26, 2020
Anritsu	Spectrum Analyzer	MS2830A	6201396378	Jun. 27, 2019	Jun. 26, 2020
Mini-Circuits	Power Amplifier	ZVE-8G+	6418	Oct. 16, 2019	Oct. 15, 2020
Mini-Circuits	Power Amplifier	ZVE-8G+	6382	Aug. 12, 2019	Aug. 11, 2020
ATM	Dual Directional Coupler	C122H-10	P610410z-02	Note 1	
Woken	Attenuator 1	WK0602-XX	N/A	Note 1	
PE	Attenuator 2	PE7005-10	N/A	Note 1	
PE	Attenuator 3	PE7005-3	N/A	Note 1	

General Note:

1. Prior to system verification and validation, the path loss from the signal generator to the system check source and the power meter, which includes the amplifier, cable, attenuator and directional coupler, was measured by the network analyzer. The reading of the power meter was offset by the path loss difference between the path to the power meter and the path to the system check source to monitor the actual power level fed to the system check source.
2. Referring to KDB 865664 D01v01r04, the dipole calibration interval can be extended to 3 years with justification. The dipoles are also not physically damaged, or repaired during the interval.
3. The justification data of dipole D5GHzV2, SN: 1006 can be found in appendix C. The return loss is < -20dB, within 20% of prior calibration, the impedance is within 5 ohm of prior calibration.

9. System Verification

9.1 Tissue Simulating Liquids

For the measurement of the field distribution inside the SAM phantom with DASY, the phantom must be filled with around 25 liters of homogeneous body tissue simulating liquid. For head SAR testing, the liquid height from the ear reference point (ERP) of the phantom to the liquid top surface is larger than 15 cm, which is shown in Fig. 10.1. For body SAR testing, the liquid height from the center of the flat phantom to the liquid top surface is larger than 15 cm, which is shown in Fig. 10.2.

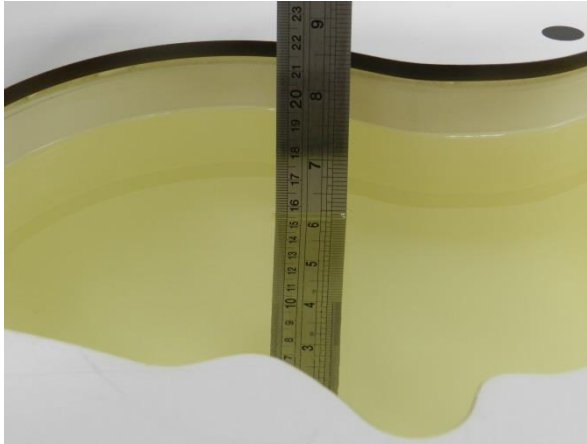


Fig 10.1 Photo of Liquid Height for Head SAR

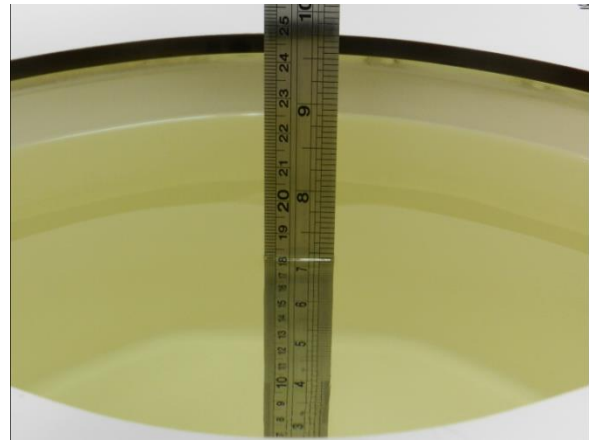


Fig 10.2 Photo of Liquid Height for Body SAR



9.2 Tissue Verification

The following tissue formulations are provided for reference only as some of the parameters have not been thoroughly verified. The composition of ingredients may be modified accordingly to achieve the desired target tissue parameters required for routine SAR evaluation.

Frequency (MHz)	Water (%)	Sugar (%)	Cellulose (%)	Salt (%)	Preventol (%)	DGBE (%)	Conductivity (σ)	Permittivity (ϵ_r)
750	41.1	57.0	0.2	1.4	0.2	0	0.89	41.9
835	40.3	57.9	0.2	1.4	0.2	0	0.90	41.5
900	40.3	57.9	0.2	1.4	0.2	0	0.97	41.5
1800, 1900, 2000	55.2	0	0	0.3	0	44.5	1.40	40.0
2450	55.0	0	0	0	0	45.0	1.80	39.2
2600	54.8	0	0	0.1	0	45.1	1.96	39.0

Simulating Liquid for 5GHz, Manufactured by SPEAG

Ingredients	(% by weight)
Water	64~78%
Mineral oil	11~18%
Emulsifiers	9~15%
Additives and Salt	2~3%

<Tissue Dielectric Parameter Check Results>

Frequency (MHz)	Liquid Temp. (°C)	Conductivity (σ)	Permittivity (ϵ_r)	Conductivity Target (σ)	Permittivity Target (ϵ_r)	Delta (σ) (%)	Delta (ϵ_r) (%)	Limit (%)	Date
2450	22.5	1.865	40.167	1.80	39.20	3.61	2.47	±5	2020/2/23
2450	22.2	1.803	38.577	1.80	39.20	0.17	-1.59	±5	2020/2/26
5250	22.4	4.601	35.923	4.71	35.95	-2.31	-0.08	±5	2020/2/24
5600	22.4	4.934	35.463	5.07	35.50	-2.68	-0.10	±5	2020/2/24
5600	22.2	5.064	36.225	5.07	35.50	-0.12	2.04	±5	2020/2/26
5750	22.4	5.095	35.231	5.22	35.35	-2.39	-0.34	±5	2020/2/24
5750	22.2	5.220	36.042	5.22	35.35	0.00	1.96	±5	2020/2/26

9.3 System Performance Check Results

Comparing to the original SAR value provided by SPEAG, the verification data should be within its specification of 10 %. Below table shows the target SAR and measured SAR after normalized to 1W input power. The table below indicates the system performance check can meet the variation criterion and the plots can be referred to Appendix A of this report.

Date	Frequency (MHz)	Input Power (mW)	Dipole S/N	Probe S/N	DAE S/N	Measured 1g SAR (W/kg)	Targeted 1g SAR (W/kg)	Normalized 1g SAR (W/kg)	Deviation (%)
2020/2/23	2450	250	D2450V2-929	ES3DV3 - SN3270	DAE4 Sn1311	14.10	53.10	56.4	6.21
2020/2/26	2450	250	D2450V2-929	EX3DV4 - SN7306	DAE3 Sn577	14.00	53.10	56.0	5.46
2020/2/24	5250	100	D5GHzV2-1006-5250	EX3DV4 - SN3931	DAE4 Sn376	7.76	80.70	77.6	-3.84
2020/2/24	5600	100	D5GHzV2-1006-5600	EX3DV4 - SN3931	DAE4 Sn376	7.86	83.30	78.6	-5.64
2020/2/26	5600	100	D5GHzV2-1006-5600	EX3DV4 - SN7306	DAE3 Sn577	8.55	83.30	85.5	2.64
2020/2/24	5750	100	D5GHzV2-1006-5750	EX3DV4 - SN3931	DAE4 Sn376	7.57	80.40	75.7	-5.85
2020/2/26	5750	100	D5GHzV2-1006-5750	EX3DV4 - SN7306	DAE3 Sn577	7.68	80.40	76.8	-4.48

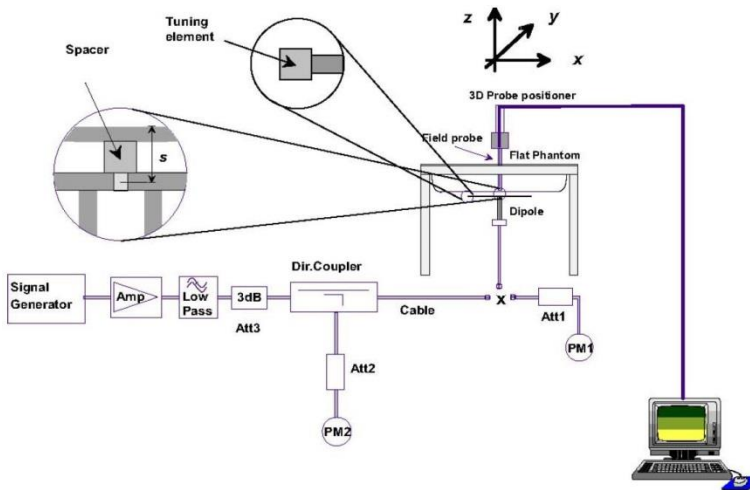


Fig 8.3.1 System Performance Check Setup



Fig 8.3.2 Setup Photo

10. RF Exposure Positions

10.1 Ear and handset reference point

Figure 9.1.1 shows the front, back, and side views of the SAM phantom. The center-of-mouth reference point is labeled “M,” the left ear reference point (ERP) is marked “LE,” and the right ERP is marked “RE.” Each ERP is 15 mm along the B-M (back-mouth) line behind the entrance-to-ear-canal (EEC) point, as shown in Figure 9.1.2 The Reference Plane is defined as passing through the two ear reference points and point M. The line N-F (neck-front), also called the reference pivoting line, is normal to the Reference Plane and perpendicular to both a line passing through RE and LE and the B-M line (see Figure 9.1.3). Both N-F and B-M lines should be marked on the exterior of the phantom shell to facilitate handset positioning. Posterior to the N-F line the ear shape is a flat surface with 6 mm thickness at each ERP, and forward of the N-F line the ear is truncated, as illustrated in Figure 9.1.2. The ear truncation is introduced to preclude the ear lobe from interfering with handset tilt, which could lead to unstable positioning at the cheek.

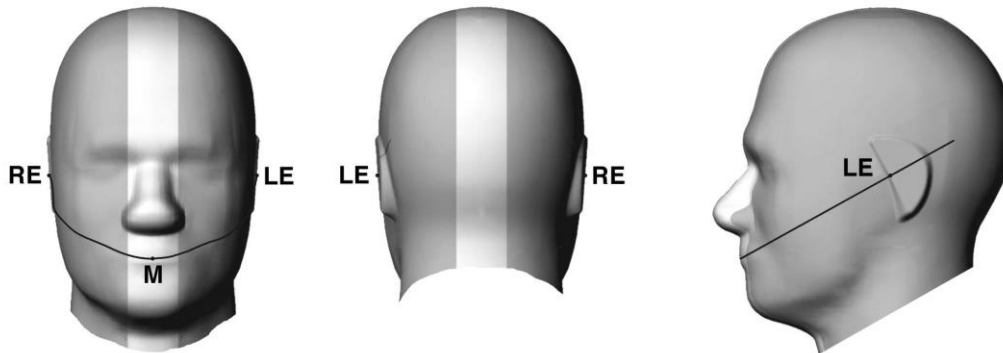


Fig 9.1.1 Front, back, and side views of SAM twin phantom

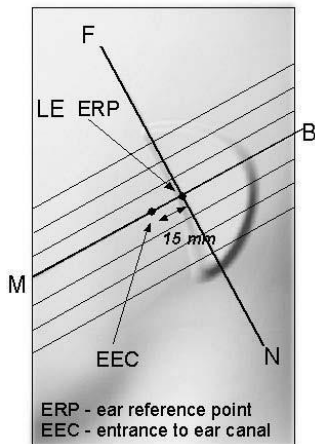


Fig 9.1.2 Close-up side view of phantom showing the ear region.

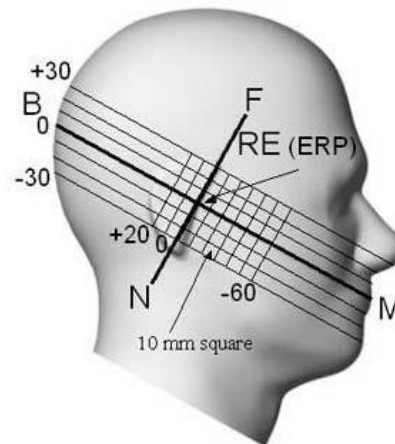


Fig 9.1.3 Side view of the phantom showing relevant markings and seven cross-sectional plane locations

10.2 Definition of the cheek position

1. Ready the handset for talk operation, if necessary. For example, for handsets with a cover piece (flip cover), open the cover. If the handset can transmit with the cover closed, both configurations must be tested.
2. Define two imaginary lines on the handset—the vertical centerline and the horizontal line. The vertical centerline passes through two points on the front side of the handset—the midpoint of the width w_t of the handset at the level of the acoustic output (point A in Figure 9.2.1 and Figure 9.2.2), and the midpoint of the width w_b of the bottom of the handset (point B). The horizontal line is perpendicular to the vertical centerline and passes through the center of the acoustic output (see Figure 9.2.1). The two lines intersect at point A. Note that for many handsets, point A coincides with the center of the acoustic output; however, the acoustic output may be located elsewhere on the horizontal line. Also note that the vertical centerline is not necessarily parallel to the front face of the handset (see Figure 9.2.2), especially for clamshell handsets, handsets with flip covers, and other irregularly-shaped handsets.
3. Position the handset close to the surface of the phantom such that point A is on the (virtual) extension of the line passing through points RE and LE on the phantom (see Figure 9.2.3), such that the plane defined by the vertical centerline and the horizontal line of the handset is approximately parallel to the sagittal plane of the phantom.
4. Translate the handset towards the phantom along the line passing through RE and LE until handset point A touches the pinna at the ERP.
5. While maintaining the handset in this plane, rotate it around the LE-RE line until the vertical centerline is in the plane normal to the plane containing B-M and N-F lines, i.e., the Reference Plane.
6. Rotate the handset around the vertical centerline until the handset (horizontal line) is parallel to the N-F line.
7. While maintaining the vertical centerline in the Reference Plane, keeping point A on the line passing through RE and LE, and maintaining the handset contact with the pinna, rotate the handset about the N-F line until any point on the handset is in contact with a phantom point below the pinna on the cheek. See Figure 9.2.3. The actual rotation angles should be documented in the test report.

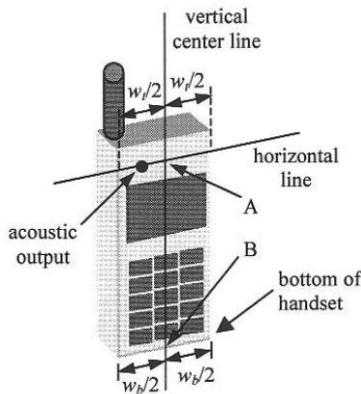


Fig 9.2.1 Handset vertical and horizontal reference lines—“fixed case”

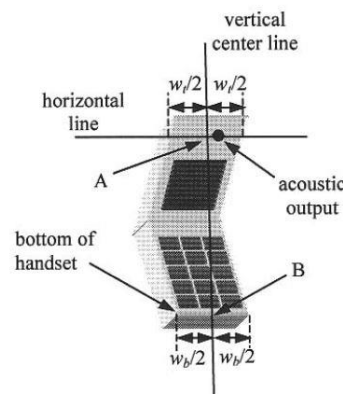


Fig 9.2.2 Handset vertical and horizontal reference lines—“clam-shell case”

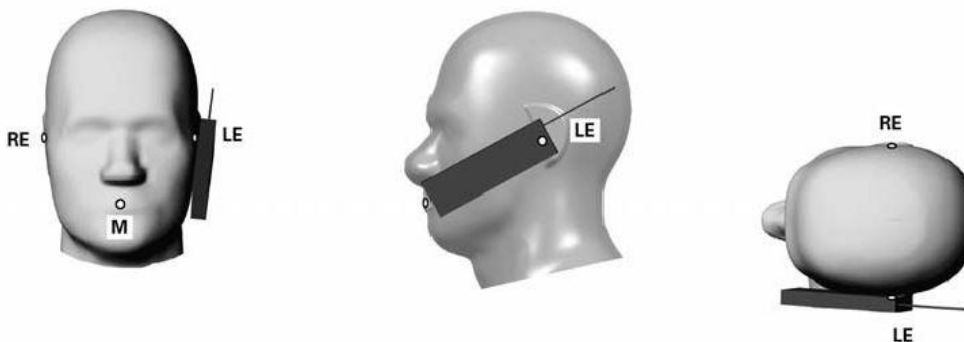


Fig 9.2.3 cheek or touch position. The reference points for the right ear (RE), left ear (LE), and mouth (M), which establish the Reference Plane for handset positioning, are indicated.

10.3 Definition of the tilt position

1. Ready the handset for talk operation, if necessary. For example, for handsets with a cover piece (flip cover), open the cover. If the handset can transmit with the cover closed, both configurations must be tested.
2. While maintaining the orientation of the handset, move the handset away from the pinna along the line passing through RE and LE far enough to allow a rotation of the handset away from the cheek by 15°.
3. Rotate the handset around the horizontal line by 15°.
4. While maintaining the orientation of the handset, move the handset towards the phantom on the line passing through RE and LE until any part of the handset touches the ear. The tilt position is obtained when the contact point is on the pinna. See Figure 9.3.1. If contact occurs at any location other than the pinna, e.g., the antenna at the back of the phantom head, the angle of the handset should be reduced. In this case, the tilt position is obtained if any point on the handset is in contact with the pinna and a second point

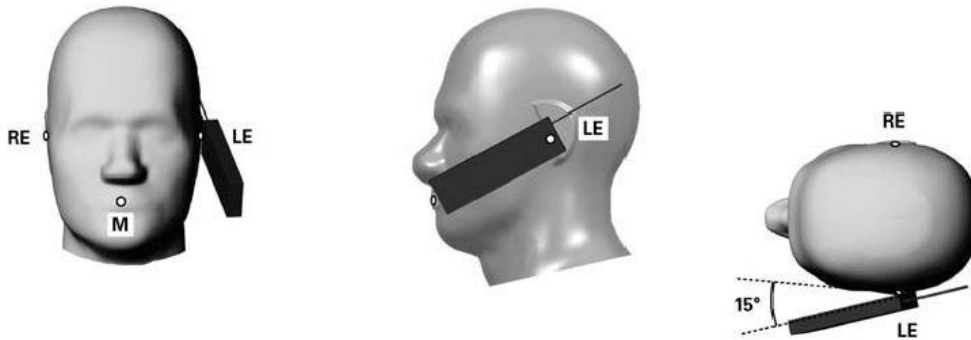


Fig 9.3.1 Tilt position. The reference points for the right ear (RE), left ear (LE), and mouth (M), which define the Reference Plane for handset positioning, are indicated.

10.4 Body Worn Accessory

Body-worn operating configurations are tested with the belt-clips and holsters attached to the device and positioned against a flat phantom in a normal use configuration (see Figure 9.4). Per KDB648474 D04v01r03, body-worn accessory exposure is typically related to voice mode operations when handsets are carried in body-worn accessories. The body-worn accessory procedures in FCC KDB 447498 D01v06 should be used to test for body-worn accessory SAR compliance, without a headset connected to it. This enables the test results for such configuration to be compatible with that required for hotspot mode when the body-worn accessory test separation distance is greater than or equal to that required for hotspot mode, when applicable. When the reported SAR for body-worn accessory, measured without a headset connected to the handset is $> 1.2 \text{ W/kg}$, the highest reported SAR configuration for that wireless mode and frequency band should be repeated for that body-worn accessory with a handset attached to the handset.

Accessories for body-worn operation configurations are divided into two categories: those that do not contain metallic components and those that do contain metallic components. When multiple accessories that do not contain metallic components are supplied with the device, the device is tested with only the accessory that dictates the closest spacing to the body. Then multiple accessories that contain metallic components are test with the device with each accessory. If multiple accessories share an identical metallic component (i.e. the same metallic belt-chip used with different holsters with no other metallic components) only the accessory that dictates the closest spacing to the body is tested.

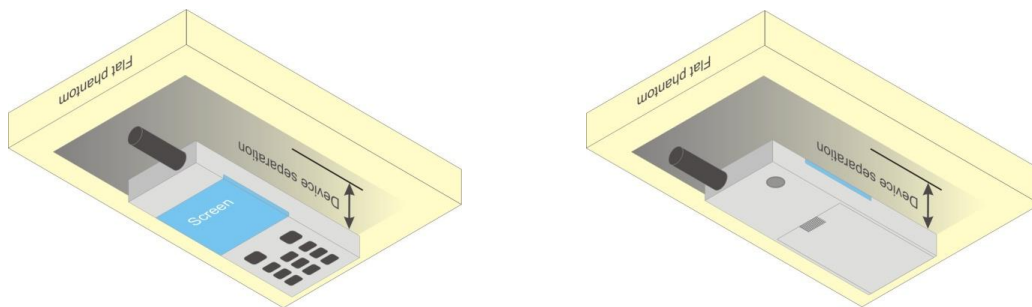


Fig 9.4 Body Worn Position

10.5 Hand Exposure

For smart phones with a display diagonal dimension $> 15.0 \text{ cm}$ or an overall diagonal dimension $> 16.0 \text{ cm}$ that provide similar mobile web access and multimedia support found in mini-tablets or UMPC mini-tablets that support voice calls next to the ear, According to KDB648474 D04v01r03, the following phablet procedures should be applied to evaluate SAR compliance for each applicable wireless modes and frequency band. Devices marketed as phablets, regardless of form factors and operating characteristics must be tested as a phablet to determine SAR compliance

1. The normally required head and body-worn accessory SAR test procedures for handsets, including hotspot mode, must be applied.
2. The UMPC mini-tablet procedures must also be applied to test the SAR of all surfaces and edges with an antenna located at $\leq 25 \text{ mm}$ from that surface or edge, in direct contact with a flat phantom, for 10-g extremity SAR according to the body-equivalent tissue dielectric parameters in KDB 865664 to address interactive hand use exposure conditions.6 The UMPC mini-tablet 1-g SAR at 5 mm is not required. When hotspot mode applies, 10-g extremity SAR is required only for the surfaces and edges with hotspot mode 1-g reported SAR $> 1.2 \text{ W/kg}$.



11. WiFi/Bluetooth Output Power (Unit: dBm)

General Note:

1. Per KDB 248227 D01v02r02, SAR test reduction is determined according to 802.11 transmission mode configurations and certain exposure conditions with multiple test positions. In the 2.4 GHz band, separate SAR procedures are applied to DSSS and OFDM configurations to simplify DSSS test requirements. For OFDM, in both 2.4 and 5 GHz bands, an initial test configuration must be determined for each standalone and aggregated frequency band, according to the transmission mode configuration with the highest maximum output power specified for production units to perform SAR measurements. If the same highest maximum output power applies to different combinations of channel bandwidths, modulations and data rates, additional procedures are applied to determine which test configurations require SAR measurement. When applicable, an initial test position may be applied to reduce the number of SAR measurements required for next to the ear, UMPC mini-tablet or hotspot mode configurations with multiple test positions.
2. For 2.4 GHz 802.11b DSSS, either the initial test position procedure for multiple exposure test positions or the DSSS procedure for fixed exposure position is applied; these are mutually exclusive. For 2.4 GHz and 5 GHz OFDM configurations, the initial test configuration is applied to measure SAR using either the initial test position procedure for multiple exposure test position configurations or the initial test configuration procedures for fixed exposure test conditions. Based on the reported SAR of the measured configurations and maximum output power of the transmission mode configurations that are not included in the initial test configuration, the subsequent test configuration and initial test position procedures are applied to determine if SAR measurements are required for the remaining OFDM transmission configurations. In general, the number of test channels that require SAR measurement is minimized based on maximum output power measured for the test sample(s).
3. For OFDM transmission configurations in the 2.4 GHz and 5 GHz bands, When the same maximum power is specified for multiple transmission modes in a frequency band, the largest channel bandwidth, lowest order modulation, lowest data rate and lowest order 802.11a/g/n/ac mode is used for SAR measurement, on the highest measured output power channel for each frequency band.
4. DSSS and OFDM configurations are considered separately according to the required SAR procedures. SAR is measured in the initial test position using the 802.11 transmission mode configuration required by the DSSS procedure or initial test configuration and subsequent test configuration(s) according to the OFDM procedures.18 The initial test position procedure is described in the following:
 - a. When the reported SAR of the initial test position is ≤ 0.4 W/kg, further SAR measurement is not required for the other test positions in that exposure configuration and 802.11 transmission mode combinations within the frequency band or aggregated band.
 - b. When the reported SAR of the test position is > 0.4 W/kg, SAR is repeated for the 802.11 transmission mode configuration tested in the initial test position to measure the subsequent next closet/smallest test separation distance and maximum coupling test position on the highest maximum output power channel, until the report SAR is ≤ 0.8 W/kg or all required test position are tested.
 - c. For all positions/configurations, when the reported SAR is > 0.8 W/kg, SAR is measured for these test positions/configurations on the subsequent next highest measured output power channel(s) until the reported SAR is ≤ 1.2 W/kg or all required channels are tested.



<2.4GHz WLAN>

	Mode	Channel	Frequency (MHz)	Average power (dBm)	Tune-Up Limit	Duty Cycle %
2.4GHz WLAN	802.11b 1Mbps	1	2412	20.00	20.00	98.80
		6	2437	20.00	20.00	
		11	2462	19.80	20.00	
	802.11g 6Mbps	1	2412	14.40	15.00	95.37
		6	2437	19.90	20.50	
		11	2462	15.40	16.00	
	802.11n-HT20 MCS0	1	2412	12.70	13.50	94.10
		6	2437	20.30	20.50	
		11	2462	15.00	16.00	
	802.11n-HT40 MCS0	3	2422	11.80	12.00	91.79
		6	2437	14.40	15.00	
		9	2452	11.70	12.00	
	802.11ac-VHT20 MCS0	1	2412	12.80	13.50	95.10
		6	2437	20.40	20.50	
		11	2462	15.10	16.00	
802.11ac-VHT40 MCS0	3	2422	11.90	12.00	90.48	
	6	2437	14.50	15.00		
	9	2452	11.80	12.00		



<5GHz WLAN>

	Mode	Channel	Frequency (MHz)	Average power (dBm)	Tune-Up Limit	Duty Cycle %
5.2GHz WLAN	802.11a 6Mbps	36	5180	20.10	21.00	95.15
		40	5200	19.10	21.00	
		44	5220	20.10	21.00	
		48	5240	20.10	21.00	
	802.11n-HT20 MCS0	36	5180	19.90	21.00	94.80
		40	5200	19.00	21.00	
		44	5220	19.90	21.00	
		48	5240	19.90	21.00	
	802.11n-HT40 MCS0	38	5190	17.90	18.00	90.34
		46	5230	19.60	20.00	
	802.11ac-VHT20 MCS0	36	5180	20.00	21.00	95.78
		40	5200	19.20	19.50	
		44	5220	20.00	21.00	
		48	5240	20.00	21.00	
	802.11ac-VHT40 MCS0	38	5190	18.00	18.00	91.35
		46	5230	19.70	20.00	
802.11ac-VHT80 MCS0	42	5210	17.70	18.00	85.93	

	Mode	Channel	Frequency (MHz)	Average power (dBm)	Tune-Up Limit	Duty Cycle %
5.3GHz WLAN	802.11a 6Mbps	52	5260	20.40	21.00	95.15
		56	5280	19.30	21.00	
		60	5300	20.30	21.00	
		64	5320	20.30	21.00	
	802.11n-HT20 MCS0	52	5260	19.70	21.00	94.80
		56	5280	19.10	21.00	
		60	5300	20.10	21.00	
		64	5320	20.10	21.00	
	802.11n-HT40 MCS0	54	5270	19.80	20.00	90.34
		62	5310	16.70	17.00	
	802.11ac-VHT20 MCS0	52	5260	19.80	21.00	95.78
		56	5280	19.20	21.00	
		60	5300	20.20	21.00	
		64	5320	20.20	21.00	
	802.11ac-VHT40 MCS0	54	5270	19.90	20.00	91.35
		62	5310	16.80	17.00	
802.11ac-VHT80 MCS0	58	5290	16.00	16.50	85.93	



	Mode	Channel	Frequency (MHz)	Average power (dBm)	Tune-Up Limit	Duty Cycle %
5.5GHz WLAN	802.11a 6Mbps	100	5500	19.10	19.50	95.15
		116	5580	19.40	19.50	
		124	5620	19.20	19.50	
		132	5660	19.20	19.50	
		144	5720	19.30	19.50	
	802.11n-HT20 MCS0	100	5500	19.30	19.50	94.80
		116	5580	19.20	19.50	
		124	5620	19.10	19.50	
		132	5660	19.10	19.50	
		144	5720	19.20	19.50	
	802.11n-HT40 MCS0	102	5510	17.80	18.00	90.34
		110	5550	18.20	18.50	
		126	5630	18.10	18.50	
		134	5670	18.20	18.50	
		142	5710	18.10	18.50	
	802.11ac-VHT20 MCS0	100	5500	19.40	19.50	95.78
		116	5580	19.30	19.50	
		124	5620	19.10	19.50	
		132	5660	19.10	19.50	
		144	5720	19.30	19.50	
802.11ac-VHT40 MCS0	102	5510	17.90	18.00	91.35	
	110	5550	18.50	18.50		
	126	5630	18.20	18.50		
	134	5670	18.30	18.50		
	142	5710	18.40	18.50		
802.11ac-VHT80 MCS0	106	5530	15.60	16.00	85.93	
	122	5610	18.60	19.00		
	138	5690	18.60	19.00		

	Mode	Channel	Frequency (MHz)	Average power (dBm)	Tune-Up Limit	Duty Cycle %
5.8GHz WLAN	802.11a 6Mbps	149	5745	17.50	18.00	95.15
		157	5785	19.30	20.00	
		165	5825	19.20	20.00	
	802.11n-HT20 MCS0	149	5745	19.20	20.00	94.80
		157	5785	17.70	18.00	
		165	5825	19.10	20.00	
	802.11n-HT40 MCS0	151	5755	18.10	19.00	90.34
		159	5795	18.20	19.00	
	802.11ac-VHT20 MCS0	149	5745	19.30	20.00	95.78
		157	5785	17.80	18.00	
		165	5825	19.20	20.00	
	802.11ac-VHT40 MCS0	151	5755	18.20	19.00	91.35
		159	5795	18.30	19.00	
	802.11ac-VHT80 MCS0	155	5775	18.90	19.50	85.93



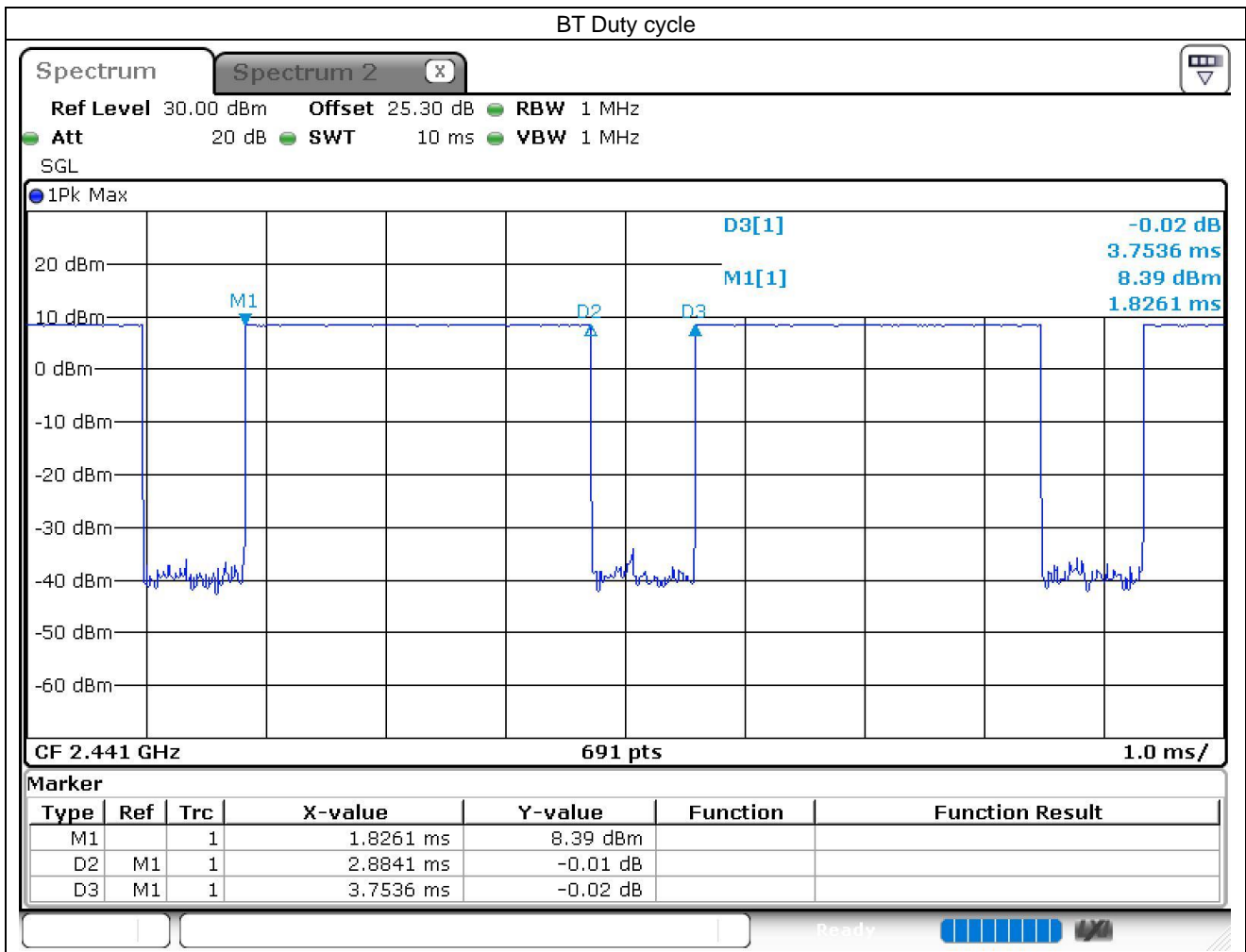
<2.4GHz Bluetooth>

Mode	Channel	Frequency (MHz)	Average power (dBm)		
			1Mbps	2Mbps	3Mbps
BR / EDR	CH 00	2402	8.45	5.24	5.29
	CH 39	2441	8.30	5.18	5.21
	CH 78	2480	7.72	4.67	4.67
Tune-up Limit			8.50	5.50	5.50

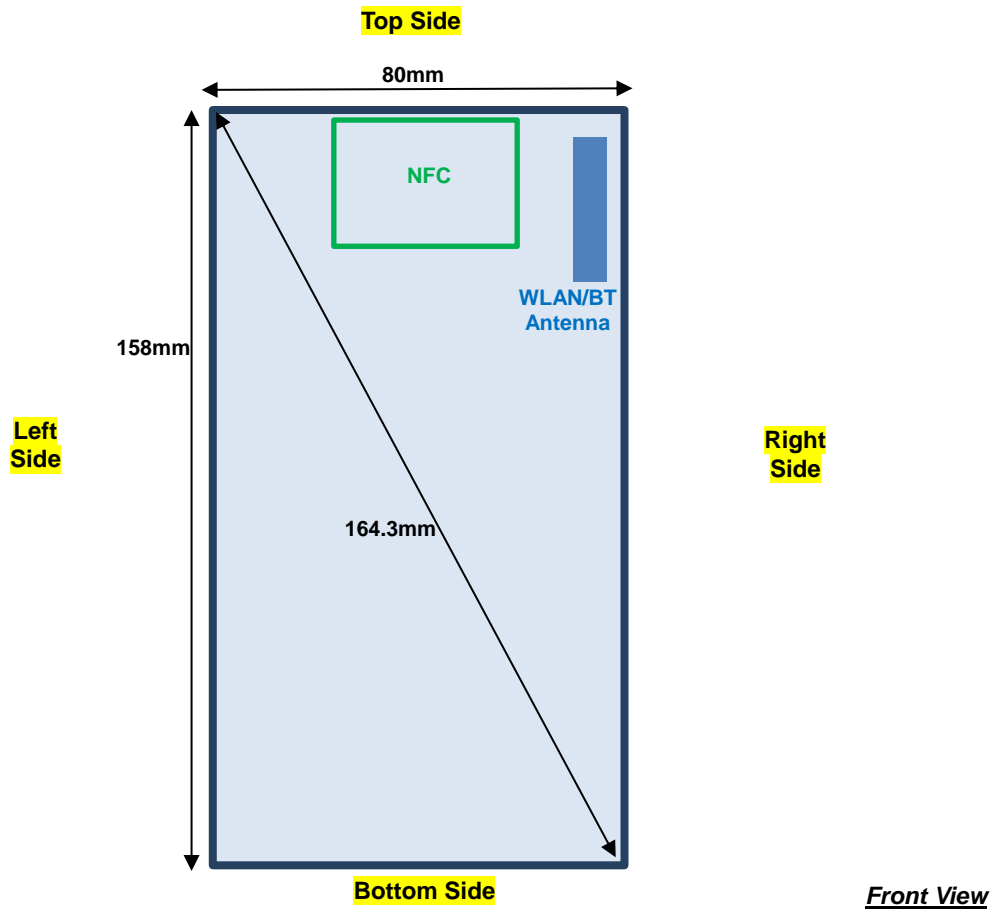
Mode	Channel	Frequency (MHz)	Average power (dBm)	
			1Mbps	2Mbps
LE	CH 00	2402	2.20	2.20
	CH 19	2440	2.50	2.50
	CH 39	2480	2.50	2.50
Tune-up Limit			2.50	2.50

General Note:

- For 2.4GHz Bluetooth SAR testing was selected 1Mbps due to its highest average power and duty cycle is 76.84% considered in SAR testing, and the duty cycle would be scaled to theoretical 83.3% in reported SAR calculation.



12. Antenna Location



Antenna	To Front (mm)	To Back (mm)	To Left Side (mm)	To Right Side (mm)	To Top Side (mm)	To Bottom Side (mm)
WLAN/BT Antenna	< 25	< 25	> 25	< 25	< 25	> 25



13. SAR Test Results

General Note:

1. Per KDB 447498 D01v06, the reported SAR is the measured SAR value adjusted for maximum tune-up tolerance.
 - a. Tune-up scaling Factor = tune-up limit power (mW) / EUT RF power (mW), where tune-up limit is the maximum rated power among all production units.
 - b. For SAR testing of WLAN signal with non-100% duty cycle, the measured SAR is scaled-up by the duty cycle scaling factor which is equal to "1/(duty cycle)"
 - c. For WLAN/Bluetooth: Reported SAR(W/kg)= Measured SAR(W/kg)* Duty Cycle scaling factor * Tune-up scaling factor
2. Per KDB 447498 D01v06, for each exposure position, testing of other required channels within the operating mode of a frequency band is not required when the *reported* 1-g or 10-g SAR for the mid-band or highest output power channel is:
 - ≤ 0.8 W/kg or 2.0 W/kg, for 1-g or 10-g respectively, when the transmission band is ≤ 100 MHz
 - ≤ 0.6 W/kg or 1.5 W/kg, for 1-g or 10-g respectively, when the transmission band is between 100 MHz and 200 MHz
 - ≤ 0.4 W/kg or 1.0 W/kg, for 1-g or 10-g respectively, when the transmission band is ≥ 200 MHz
3. Per KDB 865664 D01v01r04, for each frequency band, repeated SAR measurement is required only when the measured SAR is ≥ 0.8 W/kg.
4. For WLAN product specific SAR is necessary, due to an overall diagonal dimension is > 16 cm, therefore, the trigger handle was not necessary to be tested.

WLAN Note:

1. Per KDB 248227 D01v02r02, for 2.4GHz 802.11g/n SAR testing is not required when the highest reported SAR for DSSS is adjusted by the ratio of OFDM to DSSS specified maximum output power and the adjusted SAR is ≤ 1.2 W/kg.
2. Per KDB 248227 D01v02r02, U-NII-1 SAR testing is not required when the U-NII-2A band highest reported SAR for a test configuration is ≤ 1.2 W/kg, SAR is not required for U-NII-1 band.
3. When the reported SAR of the test position is > 0.4 W/kg, SAR is repeated for the 802.11 transmission mode configuration tested in the initial test position to measure the subsequent next closet/smallest test separation distance and maximum coupling test position on the highest maximum output power channel, until the report SAR is ≤ 0.8 W/kg or all required test position are tested.
4. For all positions / configurations, when the reported SAR is > 0.8 W/kg, SAR is measured for these test positions / configurations on the subsequent next highest measured output power channel(s) until the reported SAR is ≤ 1.2 W/kg or all required channels are tested.
5. During SAR testing the WLAN transmission was verified using a spectrum analyzer.



13.1 Head SAR

<WLAN SAR>

Plot No.	Band	Mode	Test Position	Gap (mm)	Sample	Ch.	Freq. (MHz)	Average Power (dBm)	Tune-Up Limit (dBm)	Tune-up Scaling Factor	Duty Cycle %	Duty Cycle Scaling Factor	Power Drift (dB)	Measured 1g SAR (W/kg)	Reported 1g SAR (W/kg)
	WLAN2.4GHz	802.11b 1Mbps	Right Cheek	0mm	Sample 1	6	2437	20.00	20.00	1.000	98.80	1.012	-0.12	0.632	0.640
	WLAN2.4GHz	802.11b 1Mbps	Right Tilted	0mm	Sample 1	6	2437	20.00	20.00	1.000	98.80	1.012	0.01	0.417	0.422
01	WLAN2.4GHz	802.11b 1Mbps	Left Cheek	0mm	Sample 1	6	2437	20.00	20.00	1.000	98.80	1.012	-0.06	1.380	1.397
	WLAN2.4GHz	802.11b 1Mbps	Left Cheek	0mm	Sample 1	1	2412	20.00	20.00	1.000	98.80	1.012	0.11	1.322	1.338
	WLAN2.4GHz	802.11b 1Mbps	Left Cheek	0mm	Sample 1	11	2462	19.80	20.00	1.047	98.80	1.012	0.09	1.310	1.388
	WLAN2.4GHz	802.11b 1Mbps	Left Tilted	0mm	Sample 1	6	2437	20.00	20.00	1.000	98.80	1.012	0.14	0.864	0.874
	WLAN2.4GHz	802.11b 1Mbps	Left Tilted	0mm	Sample 1	1	2412	20.00	20.00	1.000	98.80	1.012	0.07	0.826	0.836
	WLAN2.4GHz	802.11b 1Mbps	Left Tilted	0mm	Sample 1	11	2462	19.80	20.00	1.047	98.80	1.012	-0.11	0.809	0.857
	WLAN2.4GHz	802.11b 1Mbps	Left Cheek	0mm	Sample 2	6	2437	20.00	20.00	1.000	98.80	1.012	-0.19	1.220	1.235
	WLAN2.4GHz	802.11b 1Mbps	Left Cheek	0mm	Sample 2	1	2412	20.00	20.00	1.000	98.80	1.012	0.08	1.180	1.194
	WLAN2.4GHz	802.11b 1Mbps	Left Cheek	0mm	Sample 2	11	2462	19.80	20.00	1.047	98.80	1.012	0.01	1.150	1.219
	WLAN2.4GHz	802.11g 6Mbps	Right Cheek	0mm	Sample 1	6	2437	19.90	20.50	1.148	95.37	1.049	0.05	0.566	0.682
	WLAN2.4GHz	802.11g 6Mbps	Right Tilted	0mm	Sample 1	6	2437	19.90	20.50	1.148	95.37	1.049	-0.16	0.344	0.414
	WLAN2.4GHz	802.11g 6Mbps	Left Cheek	0mm	Sample 1	6	2437	19.90	20.50	1.148	95.37	1.049	0.01	1.100	1.325
	WLAN2.4GHz	802.11g 6Mbps	Left Cheek	0mm	Sample 1	1	2412	14.40	15.00	1.148	95.37	1.049	0.11	0.532	0.641
	WLAN2.4GHz	802.11g 6Mbps	Left Cheek	0mm	Sample 1	11	2462	15.40	16.00	1.148	95.37	1.049	0.09	0.618	0.744
	WLAN2.4GHz	802.11g 6Mbps	Left Tilted	0mm	Sample 1	6	2437	19.90	20.50	1.148	95.37	1.049	-0.13	0.612	0.737
	WLAN2.4GHz	802.11g 6Mbps	Left Cheek	0mm	Sample 2	6	2437	19.90	20.50	1.148	95.37	1.049	0.06	1.040	1.253
	WLAN2.4GHz	802.11g 6Mbps	Left Cheek	0mm	Sample 2	1	2412	14.40	15.00	1.148	95.37	1.049	0.03	0.512	0.617
	WLAN2.4GHz	802.11g 6Mbps	Left Cheek	0mm	Sample 2	11	2462	15.40	16.00	1.148	95.37	1.049	-0.07	0.593	0.714
	WLAN5GHz	802.11a 6Mbps	Right Cheek	0mm	Sample 1	52	5260	20.40	21.00	1.148	95.15	1.051	0.05	0.301	0.363
	WLAN5GHz	802.11a 6Mbps	Right Tilted	0mm	Sample 1	52	5260	20.40	21.00	1.148	95.15	1.051	0.03	0.129	0.156
	WLAN5GHz	802.11a 6Mbps	Left Cheek	0mm	Sample 1	52	5260	20.40	21.00	1.148	95.15	1.051	-0.1	0.758	0.915
02	WLAN5GHz	802.11a 6Mbps	Left Cheek	0mm	Sample 1	56	5280	19.30	21.00	1.479	95.15	1.051	-0.04	0.767	1.192
	WLAN5GHz	802.11a 6Mbps	Left Cheek	0mm	Sample 1	60	5300	20.30	21.00	1.175	95.15	1.051	-0.08	0.862	1.064
	WLAN5GHz	802.11a 6Mbps	Left Cheek	0mm	Sample 1	64	5320	20.30	21.00	1.175	95.15	1.051	-0.05	0.670	0.827
	WLAN5GHz	802.11a 6Mbps	Left Tilted	0mm	Sample 1	52	5260	20.40	21.00	1.148	95.15	1.051	-0.05	0.364	0.439
	WLAN5GHz	802.11a 6Mbps	Left Cheek	0mm	Sample 2	60	5300	20.30	21.00	1.175	95.15	1.051	0.03	0.712	0.879
	WLAN5GHz	802.11a 6Mbps	Right Cheek	0mm	Sample 1	116	5580	19.40	19.50	1.023	95.15	1.051	0.03	0.320	0.344
	WLAN5GHz	802.11a 6Mbps	Right Tilted	0mm	Sample 1	116	5580	19.40	19.50	1.023	95.15	1.051	0.08	0.220	0.237
	WLAN5GHz	802.11a 6Mbps	Left Cheek	0mm	Sample 1	116	5580	19.40	19.50	1.023	95.15	1.051	-0.06	1.190	1.280
	WLAN5GHz	802.11a 6Mbps	Left Cheek	0mm	Sample 1	100	5500	19.10	19.50	1.096	95.15	1.051	-0.13	0.912	1.051
	WLAN5GHz	802.11a 6Mbps	Left Cheek	0mm	Sample 1	124	5620	19.20	19.50	1.072	95.15	1.051	-0.09	1.160	1.306
	WLAN5GHz	802.11a 6Mbps	Left Cheek	0mm	Sample 1	132	5660	19.20	19.50	1.072	95.15	1.051	-0.04	1.130	1.273
03	WLAN5GHz	802.11a 6Mbps	Left Cheek	0mm	Sample 1	144	5720	19.30	19.50	1.047	95.15	1.051	-0.08	1.210	1.332
	WLAN5GHz	802.11a 6Mbps	Left Tilted	0mm	Sample 1	116	5580	19.40	19.50	1.023	95.15	1.051	-0.1	0.467	0.502
	WLAN5GHz	802.11a 6Mbps	Left Cheek	0mm	Sample 2	144	5720	19.30	19.50	1.047	95.15	1.051	-0.11	1.120	1.233
	WLAN5GHz	802.11a 6Mbps	Left Cheek	0mm	Sample 2	116	5580	19.40	19.50	1.023	95.15	1.051	0.08	1.130	1.215
	WLAN5GHz	802.11a 6Mbps	Left Cheek	0mm	Sample 2	100	5500	19.10	19.50	1.096	95.15	1.051	-0.06	0.841	0.969
	WLAN5GHz	802.11a 6Mbps	Left Cheek	0mm	Sample 2	124	5620	19.20	19.50	1.072	95.15	1.051	0.04	1.060	1.194
	WLAN5GHz	802.11a 6Mbps	Left Cheek	0mm	Sample 2	132	5660	19.20	19.50	1.072	95.15	1.051	-0.01	1.040	1.171
	WLAN5GHz	802.11a 6Mbps	Right Cheek	0mm	Sample 1	157	5785	19.30	20.00	1.175	95.15	1.051	-0.11	0.426	0.526
	WLAN5GHz	802.11a 6Mbps	Right Tilted	0mm	Sample 1	157	5785	19.30	20.00	1.175	95.15	1.051	-0.04	0.248	0.306
	WLAN5GHz	802.11a 6Mbps	Left Cheek	0mm	Sample 1	157	5785	19.30	20.00	1.175	95.15	1.051	-0.04	1.010	1.247
04	WLAN5GHz	802.11a 6Mbps	Left Cheek	0mm	Sample 1	165	5825	19.20	20.00	1.202	95.15	1.051	-0.07	1.060	1.339
	WLAN5GHz	802.11a 6Mbps	Left Cheek	0mm	Sample 1	149	5745	17.50	18.00	1.122	95.15	1.051	-0.04	0.812	0.958
	WLAN5GHz	802.11n-HT20 MCS0	Left Cheek	0mm	Sample 1	149	5745	19.20	20.00	1.202	94.80	1.055	0.09	0.944	1.197
	WLAN5GHz	802.11a 6Mbps	Left Tilted	0mm	Sample 1	157	5785	19.30	20.00	1.175	95.15	1.051	0.03	0.453	0.559
	WLAN5GHz	802.11a 6Mbps	Left Cheek	0mm	Sample 2	165	5825	19.20	20.00	1.202	95.15	1.051	-0.11	1.010	1.276
	WLAN5GHz	802.11a 6Mbps	Left Cheek	0mm	Sample 2	157	5785	19.30	20.00	1.175	95.15	1.051	0.06	0.964	1.190
	WLAN5GHz	802.11a 6Mbps	Left Cheek	0mm	Sample 2	149	5745	17.50	18.00	1.122	95.15	1.051	0.11	0.785	0.926



<Bluetooth SAR>

Plot No.	Band	Mode	Test Position	Gap (mm)	Sample	Ch.	Freq. (MHz)	Average Power (dBm)	Tune-Up Limit (dBm)	Tune-up Scaling Factor	Duty Cycle %	Duty Cycle Scaling Factor	Power Drift (dB)	Measured 1g SAR (W/kg)	Reported 1g SAR (W/kg)
	Bluetooth	1M	Right Cheek	0mm	Sample 1	0	2402	8.45	8.50	1.012	76.84	1.084	0.05	0.013	0.014
	Bluetooth	1M	Right Tilted	0mm	Sample 1	0	2402	8.45	8.50	1.012	76.84	1.084	-0.16	0.010	0.011
05	Bluetooth	1M	Left Cheek	0mm	Sample 1	0	2402	8.45	8.50	1.012	76.84	1.084	0.12	0.014	0.015
	Bluetooth	1M	Left Cheek	0mm	Sample 1	39	2441	8.30	8.50	1.047	76.84	1.084	0.11	0.011	0.012
	Bluetooth	1M	Left Cheek	0mm	Sample 1	78	2480	7.72	8.50	1.197	76.84	1.084	0.09	0.011	0.014
	Bluetooth	1M	Left Tilted	0mm	Sample 1	0	2402	8.45	8.50	1.012	76.84	1.084	-0.13	0.007	0.008
	Bluetooth	1M	Left Cheek	0mm	Sample 2	0	2402	8.45	8.50	1.012	76.84	1.084	0.11	0.011	0.012

13.2 Body Worn Accessory SAR

<WLAN SAR>

Plot No.	Band	Mode	Test Position	Gap (mm)	Holster	Sample	Ch.	Freq. (MHz)	Average Power (dBm)	Tune-Up Limit (dBm)	Tune-up Scaling Factor	Duty Cycle %	Duty Cycle Scaling Factor	Power Drift (dB)	Measured 1g SAR (W/kg)	Reported 1g SAR (W/kg)
	WLAN2.4GHz	802.11b 1Mbps	Front	0mm	Soft Holster	Sample 1	6	2437	20.00	20.00	1.000	98.80	1.012	0.05	0.111	0.112
06	WLAN2.4GHz	802.11b 1Mbps	Back	0mm	Soft Holster	Sample 1	6	2437	20.00	20.00	1.000	98.80	1.012	-0.13	0.123	0.124
	WLAN2.4GHz	802.11b 1Mbps	Back	0mm	Soft Holster	Sample 1	1	2412	20.00	20.00	1.000	98.80	1.012	0	0.109	0.110
	WLAN2.4GHz	802.11b 1Mbps	Back	0mm	Soft Holster	Sample 1	11	2462	19.80	20.00	1.047	98.80	1.012	-0.14	0.116	0.123
	WLAN2.4GHz	802.11b 1Mbps	Back	0mm	Soft Holster	Sample 2	6	2437	20.00	20.00	1.000	98.80	1.012	0.03	0.111	0.112
	WLAN5GHz	802.11a 6Mbps	Front	0mm	Soft Holster	Sample 1	52	5260	20.40	21.00	1.148	95.15	1.051	0.03	0.215	0.259
07	WLAN5GHz	802.11a 6Mbps	Back	0mm	Soft Holster	Sample 1	52	5260	20.40	21.00	1.148	95.15	1.051	-0.08	0.674	0.813
	WLAN5GHz	802.11a 6Mbps	Back	0mm	Soft Holster	Sample 1	56	5280	19.30	21.00	1.479	95.15	1.051	-0.07	0.506	0.787
	WLAN5GHz	802.11a 6Mbps	Back	0mm	Soft Holster	Sample 1	60	5300	20.30	21.00	1.175	95.15	1.051	-0.13	0.629	0.777
	WLAN5GHz	802.11a 6Mbps	Back	0mm	Soft Holster	Sample 1	64	5320	20.30	21.00	1.175	95.15	1.051	-0.11	0.549	0.678
	WLAN5GHz	802.11a 6Mbps	Back	0mm	Soft Holster	Sample 2	52	5260	20.40	21.00	1.148	95.15	1.051	-0.19	0.556	0.671
	WLAN5GHz	802.11a 6Mbps	Front	0mm	Soft Holster	Sample 1	116	5580	19.40	19.50	1.023	95.15	1.051	0.04	0.147	0.158
	WLAN5GHz	802.11a 6Mbps	Back	0mm	Soft Holster	Sample 1	116	5580	19.40	19.50	1.023	95.15	1.051	0	0.465	0.500
	WLAN5GHz	802.11a 6Mbps	Back	0mm	Soft Holster	Sample 1	100	5500	19.10	19.50	1.096	95.15	1.051	-0.08	0.421	0.485
	WLAN5GHz	802.11a 6Mbps	Back	0mm	Soft Holster	Sample 1	124	5620	19.20	19.50	1.072	95.15	1.051	-0.01	0.462	0.520
	WLAN5GHz	802.11a 6Mbps	Back	0mm	Soft Holster	Sample 1	132	5660	19.20	19.50	1.072	95.15	1.051	0.08	0.434	0.489
08	WLAN5GHz	802.11a 6Mbps	Back	0mm	Soft Holster	Sample 1	144	5720	19.30	19.50	1.047	95.15	1.051	-0.14	0.497	0.547
	WLAN5GHz	802.11a 6Mbps	Back	0mm	Soft Holster	Sample 2	144	5720	19.30	19.50	1.047	95.15	1.051	-0.09	0.471	0.518
	WLAN5GHz	802.11a 6Mbps	Front	0mm	Soft Holster	Sample 1	157	5785	19.30	20.00	1.175	95.15	1.051	0.03	0.129	0.159
	WLAN5GHz	802.11a 6Mbps	Back	0mm	Soft Holster	Sample 1	157	5785	19.30	20.00	1.175	95.15	1.051	-0.12	0.437	0.540
	WLAN5GHz	802.11a 6Mbps	Back	0mm	Soft Holster	Sample 1	149	5745	17.50	18.00	1.122	95.15	1.051	-0.06	0.340	0.401
09	WLAN5GHz	802.11a 6Mbps	Back	0mm	Soft Holster	Sample 1	165	5825	19.20	20.00	1.202	95.15	1.051	-0.13	0.612	0.773
	WLAN5GHz	802.11a 6Mbps	Back	0mm	Soft Holster	Sample 2	165	5825	19.20	20.00	1.202	95.15	1.051	-0.03	0.515	0.651

<Bluetooth SAR>

Plot No.	Band	Mode	Test Position	Gap (mm)	Holster	Sample	Ch.	Freq. (MHz)	Average Power (dBm)	Tune-Up Limit (dBm)	Tune-up Scaling Factor	Duty Cycle %	Duty Cycle Scaling Factor	Power Drift (dB)	Measured 1g SAR (W/kg)	Reported 1g SAR (W/kg)
	Bluetooth	1M	Front	0mm	Soft Holster	Sample 1	0	2402	8.45	8.50	1.012	76.84	1.084	0.01	0.001	0.001
10	Bluetooth	1M	Back	0mm	Soft Holster	Sample 1	0	2402	8.45	8.50	1.012	76.84	1.084	0.17	0.001	0.001
	Bluetooth	1M	Back	0mm	Soft Holster	Sample 1	39	2441	8.30	8.50	1.047	76.84	1.084	0.01	0.001	0.001
	Bluetooth	1M	Back	0mm	Soft Holster	Sample 1	78	2480	7.72	8.50	1.197	76.84	1.084	-0.14	0.001	0.001
	Bluetooth	1M	Back	0mm	Soft Holster	Sample 2	0	2402	8.45	8.50	1.012	76.84	1.084	0.09	0.001	0.001

13.3 Product Specific SAR

<WLAN SAR>

Plot No.	Band	Mode	Test Position	Gap (mm)	Holster	Sample	Ch.	Freq. (MHz)	Average Power (dBm)	Tune-Up Limit (dBm)	Tune-up Scaling Factor	Duty Cycle %	Duty Cycle Scaling Factor	Power Drift (dB)	Measured 10g SAR (W/kg)	Reported 10g SAR (W/kg)
	WLAN2.4GHz	802.11b 1Mbps	Front	0mm	-	Sample 1	6	2437	20.00	20.00	1.000	98.80	1.012	0.15	1.103	1.117
	WLAN2.4GHz	802.11b 1Mbps	Back	0mm	-	Sample 1	6	2437	20.00	20.00	1.000	98.80	1.012	-0.04	1.115	1.128
	WLAN2.4GHz	802.11b 1Mbps	Back	0mm	wrist-mount	Sample 1	6	2437	20.00	20.00	1.000	98.80	1.012	0.02	0.172	0.174
11	WLAN2.4GHz	802.11b 1Mbps	Right Side	0mm	-	Sample 1	6	2437	20.00	20.00	1.000	98.80	1.012	0.18	1.170	1.184
	WLAN2.4GHz	802.11b 1Mbps	Right Side	0mm	-	Sample 1	1	2412	20.00	20.00	1.000	98.80	1.012	-0.15	1.088	1.101
	WLAN2.4GHz	802.11b 1Mbps	Right Side	0mm	-	Sample 1	11	2462	19.80	20.00	1.047	98.80	1.012	-0.12	1.090	1.155
	WLAN2.4GHz	802.11b 1Mbps	Top Side	0mm	-	Sample 1	6	2437	20.00	20.00	1.000	98.80	1.012	-0.07	0.676	0.685
	WLAN2.4GHz	802.11b 1Mbps	Right Side	0mm	-	Sample 2	6	2437	20.00	20.00	1.000	98.80	1.012	0.13	1.098	1.111
	WLAN5GHz	802.11a 6Mbps	Front	0mm	-	Sample 1	52	5260	20.40	21.00	1.148	95.15	1.051	-0.09	0.453	0.547
12	WLAN5GHz	802.11a 6Mbps	Back	0mm	-	Sample 1	52	5260	20.40	21.00	1.148	95.15	1.051	-0.14	2.010	2.425
	WLAN5GHz	802.11a 6Mbps	Back	0mm	-	Sample 1	56	5280	19.30	21.00	1.479	95.15	1.051	-0.13	1.530	2.378
	WLAN5GHz	802.11a 6Mbps	Back	0mm	-	Sample 1	60	5300	20.30	21.00	1.175	95.15	1.051	-0.14	1.890	2.334
	WLAN5GHz	802.11a 6Mbps	Back	0mm	-	Sample 1	64	5320	20.30	21.00	1.175	95.15	1.051	-0.17	1.510	1.865
	WLAN5GHz	802.11a 6Mbps	Back	0mm	wrist-mount	Sample 1	52	5260	20.40	21.00	1.148	95.15	1.051	-0.09	0.267	0.322
	WLAN5GHz	802.11a 6Mbps	Right Side	0mm	-	Sample 1	52	5260	20.40	21.00	1.148	95.15	1.051	-0.19	1.490	1.798
	WLAN5GHz	802.11a 6Mbps	Top Side	0mm	-	Sample 1	52	5260	20.40	21.00	1.148	95.15	1.051	-0.08	0.174	0.210
	WLAN5GHz	802.11a 6Mbps	Back	0mm	-	Sample 2	52	5260	20.40	21.00	1.148	95.15	1.051	-0.15	1.850	2.232
	WLAN5GHz	802.11a 6Mbps	Front	0mm	-	Sample 1	116	5580	19.40	19.50	1.023	95.15	1.051	0.12	0.044	0.047
	WLAN5GHz	802.11a 6Mbps	Back	0mm	-	Sample 1	116	5580	19.40	19.50	1.023	95.15	1.051	-0.13	1.690	1.818
	WLAN5GHz	802.11a 6Mbps	Back	0mm	-	Sample 1	100	5500	19.10	19.50	1.096	95.15	1.051	-0.03	1.640	1.890
	WLAN5GHz	802.11a 6Mbps	Back	0mm	-	Sample 1	124	5620	19.20	19.50	1.072	95.15	1.051	-0.01	1.780	2.005
	WLAN5GHz	802.11a 6Mbps	Back	0mm	-	Sample 1	132	5660	19.20	19.50	1.072	95.15	1.051	0	1.810	2.038
13	WLAN5GHz	802.11a 6Mbps	Back	0mm	-	Sample 1	144	5720	19.30	19.50	1.047	95.15	1.051	-0.09	2.010	2.212
	WLAN5GHz	802.11a 6Mbps	Back	0mm	wrist-mount	Sample 1	144	5720	19.30	19.50	1.047	95.15	1.051	0.07	0.279	0.307
	WLAN5GHz	802.11a 6Mbps	Right Side	0mm	-	Sample 1	116	5580	19.40	19.50	1.023	95.15	1.051	0.05	1.490	1.602
	WLAN5GHz	802.11a 6Mbps	Top Side	0mm	-	Sample 1	116	5580	19.40	19.50	1.023	95.15	1.051	0.01	0.128	0.138
	WLAN5GHz	802.11a 6Mbps	Back	0mm	-	Sample 2	144	5720	19.30	19.50	1.047	95.15	1.051	0.1	1.810	1.992
	WLAN5GHz	802.11a 6Mbps	Front	0mm	-	Sample 1	157	5785	19.30	20.00	1.175	95.15	1.051	-0.01	0.504	0.622
	WLAN5GHz	802.11a 6Mbps	Back	0mm	-	Sample 1	157	5785	19.30	20.00	1.175	95.15	1.051	-0.16	1.790	2.210
	WLAN5GHz	802.11a 6Mbps	Back	0mm	-	Sample 1	149	5745	17.50	18.00	1.122	95.15	1.051	-0.07	1.120	1.321
14	WLAN5GHz	802.11a 6Mbps	Back	0mm	-	Sample 1	165	5825	19.20	20.00	1.202	95.15	1.051	-0.02	2.200	2.780
	WLAN5GHz	802.11a 6Mbps	Back	0mm	wrist-mount	Sample 1	165	5825	19.20	20.00	1.202	95.15	1.051	-0.02	0.283	0.358
	WLAN5GHz	802.11a 6Mbps	Right Side	0mm	-	Sample 1	157	5785	19.30	20.00	1.175	95.15	1.051	0.01	1.240	1.531
	WLAN5GHz	802.11a 6Mbps	Top Side	0mm	-	Sample 1	157	5785	19.30	20.00	1.175	95.15	1.051	-0.08	0.153	0.189
	WLAN5GHz	802.11a 6Mbps	Back	0mm	-	Sample 2	165	5825	19.20	20.00	1.202	95.15	1.051	-0.1	2.010	2.540
	WLAN5GHz	802.11a 6Mbps	Back	0mm	-	Sample 2	157	5785	19.30	20.00	1.175	95.15	1.051	0.03	1.710	2.112
	WLAN5GHz	802.11a 6Mbps	Back	0mm	-	Sample 2	149	5745	17.50	18.00	1.122	95.15	1.051	-0.04	1.060	1.250

<Bluetooth SAR>

Plot No.	Band	Mode	Test Position	Gap (mm)	Holster	Sample	Ch.	Freq. (MHz)	Average Power (dBm)	Tune-Up Limit (dBm)	Tune-up Scaling Factor	Duty Cycle %	Duty Cycle Scaling Factor	Power Drift (dB)	Measured 10g SAR (W/kg)	Reported 10g SAR (W/kg)
	Bluetooth	1M	Front	0mm	-	Sample 1	0	2402	8.45	8.50	1.012	76.84	1.301	0.01	0.005	0.007
	Bluetooth	1M	Back	0mm	-	Sample 1	0	2402	8.45	8.50	1.012	76.84	1.301	-0.04	0.010	0.013
	Bluetooth	1M	Back	0mm	wrist-mount	Sample 1	0	2402	8.45	8.50	1.012	76.84	1.301	0.09	0.004	0.005
15	Bluetooth	1M	Right Side	0mm	-	Sample 1	0	2402	8.45	8.50	1.012	76.84	1.301	-0.1	0.012	0.016
	Bluetooth	1M	Right Side	0mm	-	Sample 1	39	2441	8.30	8.50	1.047	76.84	1.301	-0.11	0.011	0.015
	Bluetooth	1M	Right Side	0mm	-	Sample 1	78	2480	7.72	8.50	1.197	76.84	1.301	0.01	0.009	0.014
	Bluetooth	1M	Top Side	0mm	-	Sample 1	0	2402	8.45	8.50	1.012	76.84	1.301	0	0.008	0.011
	Bluetooth	1M	Right Side	0mm	-	Sample 2	0	2402	8.45	8.50	1.012	76.84	1.301	0	0.001	0.001

13.4 Repeated SAR Measurement

No.	Band	Mode	Test Position	Gap (mm)	Sample	Ch.	Freq. (MHz)	Average Power (dBm)	Tune-Up Limit (dBm)	Tune-up Scaling Factor	Duty Cycle %	Duty Cycle Scaling Factor	Power Drift (dB)	Measured 1g SAR (W/kg)	Ratio	Reported 1g SAR (W/kg)
1st	WLAN2.4GHz	802.11b 1Mbps	Left Cheek	0mm	Sample 1	6	2437	20.00	20.00	1.000	98.80	1.012	-0.06	1.380	-	1.397
2nd	WLAN2.4GHz	802.11b 1Mbps	Left Cheek	0mm	Sample 1	6	2437	20.00	20.00	1.000	98.80	1.012	-0.06	1.330	1.04	1.346
1st	WLAN5GHz	802.11a 6Mbps	Left Cheek	0mm	Sample 1	60	5300	20.30	21.00	1.175	95.15	1.051	-0.08	0.862	-	1.064
2nd	WLAN5GHz	802.11a 6Mbps	Left Cheek	0mm	Sample 1	60	5300	20.30	21.00	1.175	95.15	1.051	-0.02	0.776	1.11	0.958
1st	WLAN5GHz	802.11a 6Mbps	Left Cheek	0mm	Sample 1	144	5720	19.30	19.50	1.047	95.15	1.051	-0.08	1.210	-	1.332
2nd	WLAN5GHz	802.11a 6Mbps	Left Cheek	0mm	Sample 1	144	5720	19.30	19.50	1.047	95.15	1.051	-0.02	1.030	1.17	1.134
1st	WLAN5GHz	802.11a 6Mbps	Left Cheek	0mm	Sample 1	165	5825	19.20	20.00	1.202	95.15	1.051	-0.07	1.060	-	1.339
2nd	WLAN5GHz	802.11a 6Mbps	Left Cheek	0mm	Sample 1	165	5825	19.20	20.00	1.202	95.15	1.051	-0.07	1.010	1.05	1.276

No.	Band	Mode	Test Position	Gap (mm)	Sample	Ch.	Freq. (MHz)	Average Power (dBm)	Tune-Up Limit (dBm)	Tune-up Scaling Factor	Duty Cycle %	Duty Cycle Scaling Factor	Power Drift (dB)	Measured 10g SAR (W/kg)	Ratio	Reported 10g SAR (W/kg)
1st	WLAN5GHz	802.11a 6Mbps	Back	0mm	Sample 1	52	5260	20.40	21.00	1.148	95.15	1.051	-0.14	2.010	-	2.425
2nd	WLAN5GHz	802.11a 6Mbps	Back	0mm	Sample 1	52	5260	20.40	21.00	1.148	95.15	1.051	-0.05	1.850	1.09	2.232
1st	WLAN5GHz	802.11a 6Mbps	Back	0mm	Sample 1	144	5720	19.30	19.50	1.047	95.15	1.051	-0.09	2.010	-	2.212
2nd	WLAN5GHz	802.11a 6Mbps	Back	0mm	Sample 1	144	5720	19.30	19.50	1.047	95.15	1.051	0.01	1.980	1.02	2.179
1st	WLAN5GHz	802.11a 6Mbps	Back	0mm	Sample 1	165	5825	19.20	20.00	1.202	95.15	1.051	-0.02	2.200	-	2.780
2nd	WLAN5GHz	802.11a 6Mbps	Back	0mm	Sample 1	165	5825	19.20	20.00	1.202	95.15	1.051	-0.02	2.150	1.02	2.717

General Note:

1. Per KDB 865664 D01v01r04, for each frequency band, repeated SAR measurement is required only when the measured SAR is $\geq 0.8W/kg$.
2. Per KDB 865664 D01v01r04, if the ratio among the repeated measurement is ≤ 1.2 and the measured SAR $< 1.45W/kg$, only one repeated measurement is required.
3. Per KDB 865664 D01v01r04, if the extremity repeated SAR is necessary, the same procedures should be adapted for measurements according to extremity and occupational exposure limits by applying a factor of 2.5 for extremity exposure and a factor of 5 for occupational exposure to the corresponding SAR thresholds.
4. The ratio is the difference in percentage between original and repeated *measured SAR*.
5. All measurement SAR result is scaled-up to account for tune-up tolerance and is compliant.

Test Engineer : Carter Jhuang, Randy Lin, Jacky Chen and Thomas Wang



14. Uncertainty Assessment

Per KDB 865664 D01 SAR measurement 100MHz to 6GHz, when the highest measured 1-g SAR within a frequency band is < 1.5 W/kg and the measured 10-g SAR within a frequency band is < 3.75 W/kg. The expanded SAR measurement uncertainty must be $\leq 30\%$, for a confidence interval of $k = 2$. If these conditions are met, extensive SAR measurement uncertainty analysis described in IEEE Std 1528-2013 is not required in SAR reports submitted for equipment approval. For this device, the highest measured 1-g SAR is less 1.5W/kg and highest measured 10-g SAR is less 3.75W/kg. Therefore, the measurement uncertainty table is not required in this report.

15. References

- [1] FCC 47 CFR Part 2 "Frequency Allocations and Radio Treaty Matters; General Rules and Regulations"
- [2] ANSI/IEEE Std. C95.1-1992, "IEEE Standard for Safety Levels with Respect to Human Exposure to Radio Frequency Electromagnetic Fields, 3 kHz to 300 GHz", September 1992
- [3] IEEE Std. 1528-2013, "IEEE Recommended Practice for Determining the Peak Spatial-Average Specific Absorption Rate (SAR) in the Human Head from Wireless Communications Devices: Measurement Techniques", Sep 2013
- [4] SPEAG DASY System Handbook
- [5] FCC KDB 248227 D01 v02r02, "SAR Guidance for IEEE 802.11 (WiFi) Transmitters", Oct 2015.
- [6] FCC KDB 447498 D01 v06, "Mobile and Portable Device RF Exposure Procedures and Equipment Authorization Policies", Oct 2015
- [7] FCC KDB 648474 D04 v01r03, "SAR Evaluation Considerations for Wireless Handsets", Oct 2015.
- [8] FCC KDB 941225 D07 v01r02, " SAR Evaluation Procedures for UMPC Mini-Tablet Devices", Oct 2015.
- [9] FCC KDB 865664 D01 v01r04, "SAR Measurement Requirements for 100 MHz to 6 GHz", Aug 2015.
- [10] FCC KDB 865664 D02 v01r02, "RF Exposure Compliance Reporting and Documentation Considerations" Oct 2015.