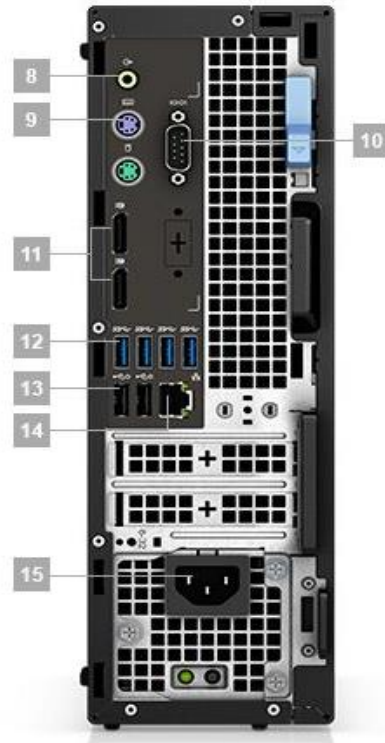


## Avid Configuration Guidelines DELL 3430 workstation Tower 4 or 6 Core CPU System



### Ports & Slots

1. Power Button | 2. Optical Drive (optional) | 3. Internal SD Card reader (Optional) | 4. Universal Audio Jack | 5. USB 2.0 (2), Type A | 6. USB 3.1, Type A [5Gb] | 7. USB 3.1, Type C [10Gb] | 8. Audio Line Out | 9. PS2 Keyboard/Mouse | 10. Serial | 11. Display Port (2) | 12. USB 3.1, Type A [5Gb] (4) | 13. USB 2.0, Type A [w/ SmartPower] (2) | 14. RJ45 Network Connector | 15. Power plug

## 1.) DELL 3430 AVID Qualified System Specification:

### 3430 Hardware Configuration

#### Supported Intel Xeon and 8<sup>th</sup> Generation Intel Core i7 CPU Choices

- Intel core i7 8700 3.2 Ghz, turbo up to 4.6 Ghz 6-core
- Xeon E-2136 3.3 Ghz, turbo up to 4.5Ghz 6-core (Better)
- Xeon E-2146G 3.5 Ghz, turbo up to 4.5Ghz 6-core (Best Performance)
- Xeon E-2174G 3.8 Ghz, turbo up to 4.7Ghz 4-core

#### Supported Video Cards

- 1.) NVIDIA P620 2GB PCIe video board
- 2.) NVIDIA P1000 4GB PCI-e video board

System Disk Drive – 500 GB (recommended) SATA SSD. DELL offers higher performing solid-state, NVMe, and SAS boot drive options which are acceptable. Recommend a DELL qualified drive be selected.

#### Standard AVID memory configuration:

- Systems using the Xeon CPU's will use DDR4-2666MHz ECC memory (up to 4 DIMMs per system)
- Systems using core i7 will use DDR4-2666Mhz Non-ECC memory (up to 4 DIMMs per system)
- 64 GB memory max for this system
- Each CPU has 2 memory lanes - optimal bandwidth when 2 or 4 memory lanes filled
  - 32GB (2 x 16GB) DDR4 2666MHz memory – (Requires two 16GB DIMMs)

Memory modules must be installed according to manufacturer's requirements

#### Optional AVID memory configuration:

- 16GB (2 x 8GB) DDR4 2666 memory – (Requires two 8GB DIMMs)
- 32GB (4 x 8GB) DDR4 2666 memory – (Requires four 8GB DIMMs)
- 64GB (4 x 16GB) DDR4 2666 memory – (Requires four 16GB DIMMs)

#### Memory configuration constraints

- No other memory configurations are formally supported in AVID environments.
- Un-balanced memory configurations which mix and match memory module sizes and locations will result in a poor performing, non-optimal operating environment.

## 2.) Qualified Operating Systems, Avid Client Editing Applications, Hardware and Shared-Storage support for the DELL 3430:

### DELL Supports:

- Microsoft® Windows 10 Pro for workstations 64-bit Version 1803 – (MC 2018.7 or above)

### **Not Supported –**

- Microsoft® Windows 7 – any version
- Microsoft Windows 8 or 8.1 – any version

<b>Media Composer Application</b>	<b>Minimum Rev</b>
Media Composer	2018.7
Media Composer 7.x, 8.x	Not supported
NewsCutter 11.x	Not Supported

\* Nvidia P620, P1000 require Nvidia driver that ships with the version of MC 2018.7 and above

The required GPU files and installation instructions for AMD graphics can be found at the following Avid KB link:  
[http://avid.force.com/pkb/articles/en\\_US/download/AMD-Supported-GPU-Drivers](http://avid.force.com/pkb/articles/en_US/download/AMD-Supported-GPU-Drivers)

### 3.) Qualified O.S., Hardware and shared storage supported:

	Qualified / Supported
Nitris DX	NOT SUPPORTED Low profile slots
Mojo DX	NOT SUPPORTED Low profile slots
Artist DNxIO/ DNxIQ thunderbolt connection)  Artist DNxIV/DNxIP/DNxID (thunderbolt only connection)	Yes – Supported – Thunderbolt only  <u>Thunderbolt Guidance</u>  Thunderbolt 2 & 3 - higher system over-head, not recommended to share Thunderbolt devices on the same Thunderbolt bus with DNxID, DNxIV  DNxIO would require TB3 to TB2 converter  Thunderbolt 3 offers support of cable lengths up to 60-meters <b>(via qualified Corning Thunderbolt cables)</b> for users needing to physically place the Artist DNxIO at longer distances from the host CPU Workstation.
3 <sup>rd</sup> Party Qualified Hardware	See release notes and Avid website for information regarding supported 3 <sup>rd</sup> party hardware (vendor qualified)
NEXIS / ISIS Single 1Gb Ethernet Client NEXIS Dual 1Gb Ethernet Client  Intel i350, i219, i210	ISIS 5500 / 5000 , 7500 / 7000 Avid NEXIS Pro, E2, E4, E5 V7.9
NEXIS / ISIS Hi-res (single 10Gbit) client Myricom Single-Port 10Gbit Atto FFRM-NS11, NT11, Intel X710	ISIS 5500 / 5000 , 7500 / 7000 Avid NEXIS Pro, E2, E4, E5 V7.9
NEXIS / ISIS Ultra Hi-res (dual 10Gbit) Myricom Dual-Port 10Gbit Atto FFRM-NS12, NT12, Intel X710	ISIS 5500 / 5000 Avid NEXIS Pro, E2, E4, E5 V7.9

#### **4.) AVID qualified HBA info**

<b>AVID qualified HBA</b>	<b>AVID Part Number</b>	<b>Slot Location</b>	<b>Function</b>
DELL Thunderbolt 3 adapter card	Not stocked by AVID	#1	2 ports TB3
Vendor qualified 3 <sup>rd</sup> party hardware X4 PCI-E	Not stocked by AVID	#1	Vendor qualified 3 <sup>rd</sup> party hardware interface. See release notes and Avid website for information regarding supported 3 <sup>rd</sup> party hardware
Atto FFRM-NS11,NS12, NT11, NT12 10 Gb single or dual port	Not stocked by AVID	#1	Shared Storage: NEXIS Optical Gb-Ethernet
Intel i350-T2 – Dual Gb NIC	Not stocked by AVID	#1	Shared Storage: NEXIS Copper Gb-Ethernet Dual Gb NEXIS Connectivity
Intel X710 dual port 10Gb	Not stocked by AVID	#1	Shared Storage: NEXIS Optical Gb-Ethernet
Myricom 10G-PCIE-8B-S 10G-PCIE-8B2-2S, 10G-PCIE-8C2-2T	7030-30041-01	#1	Shared Storage: NEXIS 10Gb-Ethernet

Notes:

- **DELL thunderbolt 3 PCIe card is supported in 7920, 7820, 5820, 3630, 3430. For older DELL workstations, use Thunderbolt 2 PCIe card from DELL.**

## 5.) Slot Configuration:

Slot Configuration Information (Tower and SFF)			
Slot #	Electrical	Mechanical	
1	X4 PCI-E Gen 3	X4 open ended Low profile	DELL Thunderbolt 3 adapter card for DNxIV/DNxIP/DNxID 3 <sup>rd</sup> party PCIe Open IO card (PCIe x4 or less) Shared storage PCIe card
2	x16 PCI-E Gen 3	X16 Low Profile	Graphics Card: Nvidia P620, P1000
M 1	M.2 slot 1 PCI-E Gen 3	M.2 x4	DELL NVMe SSD storage cards
	Embedded Intel I219-LM Gb	PCI-E x1 Gen 3	Qualified for Avid Nexis/ISIS

## 6.) Use of embedded NIC ports for Nexis/ISIS connectivity Important Information

The Dell 3430 has one embedded NIC ports. This port is qualified for Nexis

For proper operation and connectivity of the Intel network interface with NEXIS the following settings are required:

- For the Intel NIC driver, under the performance settings, change the following parameters:
  - Receive Buffers to 1024
  - Transmit Buffers to 1024
- Disable the windows firewall.

## 7.) Required system BIOS settings for AVID environments:

Use latest version from Vendor website

**Please Note:** CPU Hyper-threading should be enabled in all configurations. It is currently enabled by default by DELL for shipping 3430 systems

### 3430 Required system BIOS changes:

- Verify CPU Processors are set to Hyper-Threading
  - During boot up press F1 at the DELL splash screen to invoke Set Up.
  - Select the Performance tab

- Select Hyper-Threading
- Verify setting is Enabled (or enable if currently set to disable)

## 8.) Graphics Qualified Drivers:

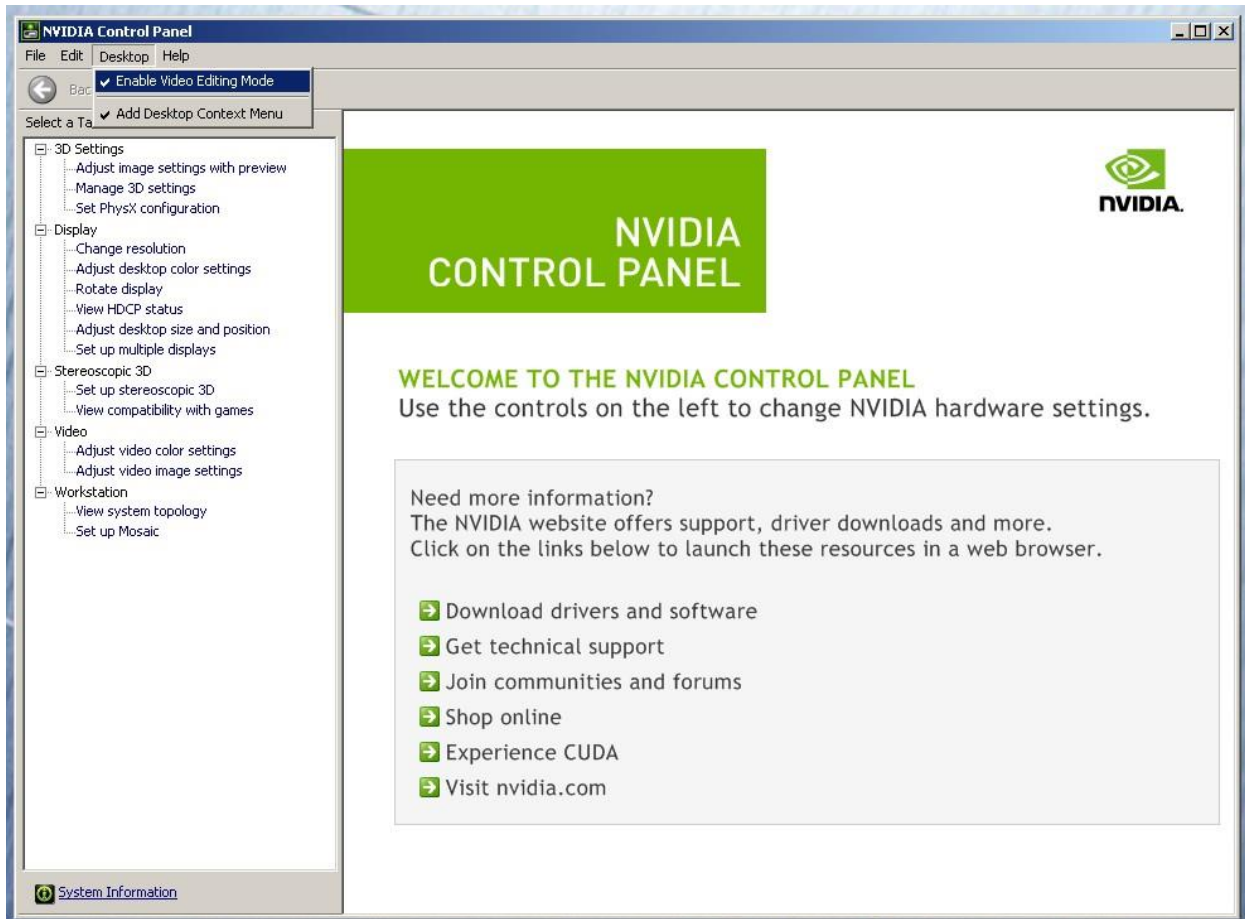
AVID Software	Version(s)	GPU	Driver Required
Media Composer	2018.7 or later	Nvidia P620, P1000	Nvidia 390.77

After installation of the AVID software the supported Nvidia driver can be found in the following directory:  
Program Files / Avid / Utilities / Nvidia.

**\*\*** The AMD graphics driver is NOT included with MC release builds. You can find this driver on the AMD web page  
<http://support.amd.com/en-us/download>

### **Set optimized Nvidia driver settings for Avid editing environments:**

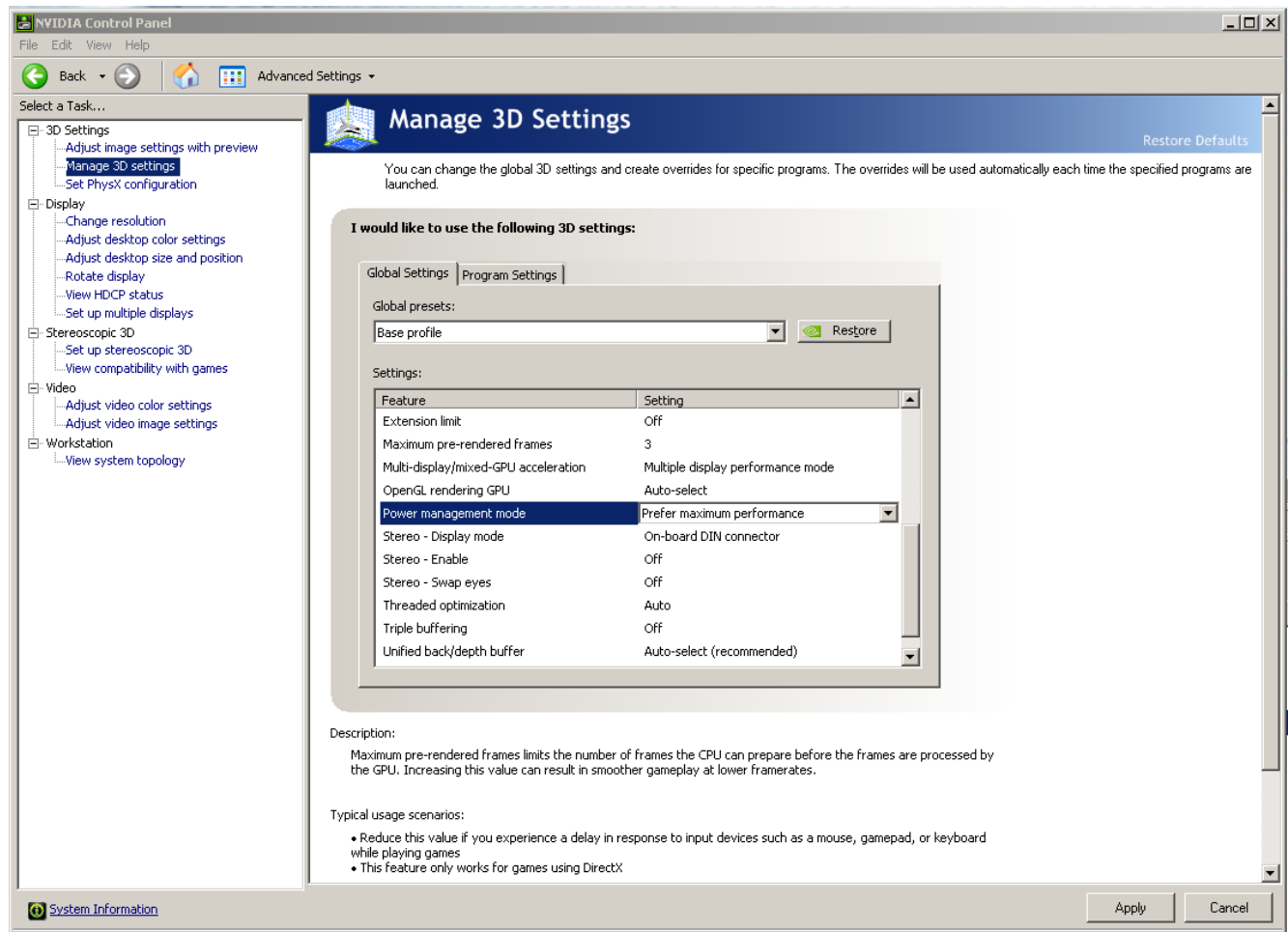
1. See picture below
2. Right-Click on the desktop and select Nvidia Control Panel
3. Select the “Desktop” menu selection in the control panel menu bar.
4. Enable “Desktop -> Video Editing Mode



5. Select Manage 3D Settings
6. Select “Global Settings” Tab
7. Under the “Global Settings” tab select “3D App – Default Global Settings” (Same as Base Profile)
8. Scroll down and locate the “Power Management Mode” feature. The default setting is “Adaptive”



9. For the “Power management mode” feature, select “Prefer maximum performance” as shown in the picture below.



10. Depress the “Apply” button.

11. Nvidia driver optimization settings for Avid environments are complete.

### **E.) GPU monitor connectivity:**

The P620 and P1000 has 4 mini-display ports. All 4 ports can be used simultaneously.

*(Important: Display-ports **are not** HDMI ports; at first glance they do look very similar to HDMI ports)*

### **F.) Serial Port Deck Control**

The DELL 3430 workstation does NOT have an embedded serial port. Primary or secondary / additional serial port deck control can be established via two methods (both of which have been qualified by Avid and will maintain frame accuracy in Avid environments)

1. Addenda model **RS-USB / 4** direct USB-to-RS422 serial adapter. This is a simple device which connects directly from a USB port to the RS422 port of a deck.  
<http://www.addenda.com/addenda-elect/products/rsUSB4.pDell>
2. Combination of a Keyspan (Tripp-Lite) Model USA-19HS USB-to-serial-port adapter with Addenda Rosetta Stone model RS – 2/8 RS232-to-RS422 converter
  - Keyspan (Tripp-Lite) Model USA-19HS (AVID P/N 7080-20013-01)  
<http://www.tripplite.com/en/products/model.cfm?txtSeriesID=518&EID=13384&txtModelID=3914>
  - Addenda Rosetta Stone (or equivalent) model RS – 2/8 RS232-to-RS422 converter (AVID P/N 7070-00507-01)  
<http://www.addenda.com/addenda-elect/products/rs28.pDell>

#### To connect the Keyspan 19HS / Addenda RS -2/8 combination:

- Install the Keyspan 19HS driver before plugging the device into USB port.
- Once the Keyspan 19HS driver is installed then plug the Keyspan 19HS into a USB port.
- The Keyspan 19HS will now show up in device driver.
- Using a serial cable, connect the 9-pin serial port of the Keyspan 19HS USB adapter to the port of the Addenda marked RS232 from PC
- Using a 2<sup>nd</sup> serial port cable connect the port of the Addenda marked “RS422 to VTR” to the deck control serial port of the deck.

### **G.) O.S. setting recommendations for optimum performance with Avid Editing applications:**

The following links provide O.S. setting suggestions for ensuring optimum performance when working with your Avid editing application with a Windows operating system.

- Optimizations for Video Editors - windows 10

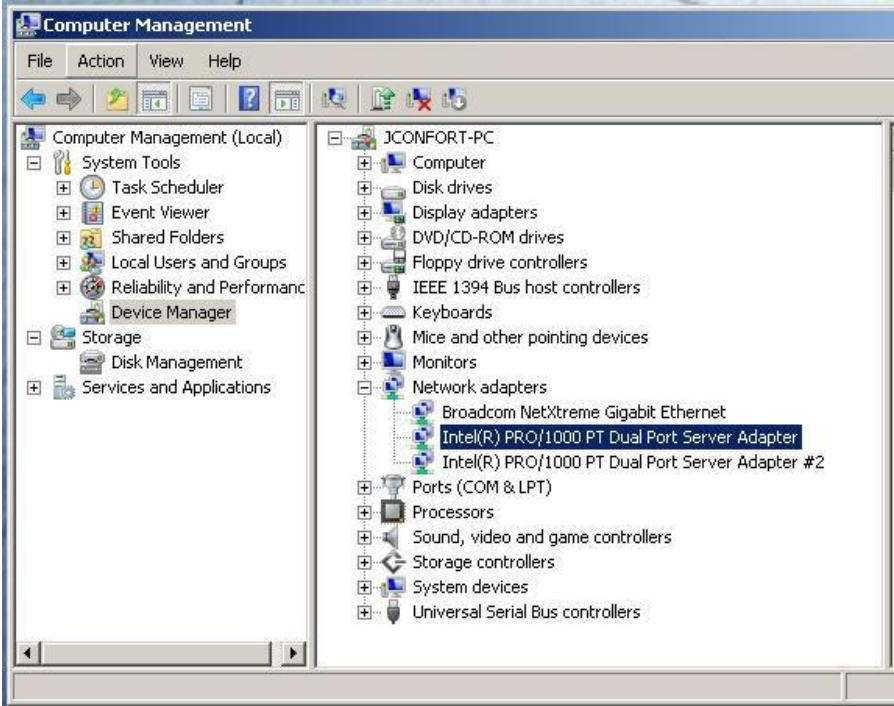
[http://avid.force.com/pkb/articles/en\\_US/Troubleshooting/Media-Composer-Windows-10-Optimizations-and-Troubleshooting](http://avid.force.com/pkb/articles/en_US/Troubleshooting/Media-Composer-Windows-10-Optimizations-and-Troubleshooting)

### **I.) Intel NIC Port(s) for NEXIS connectivity:**

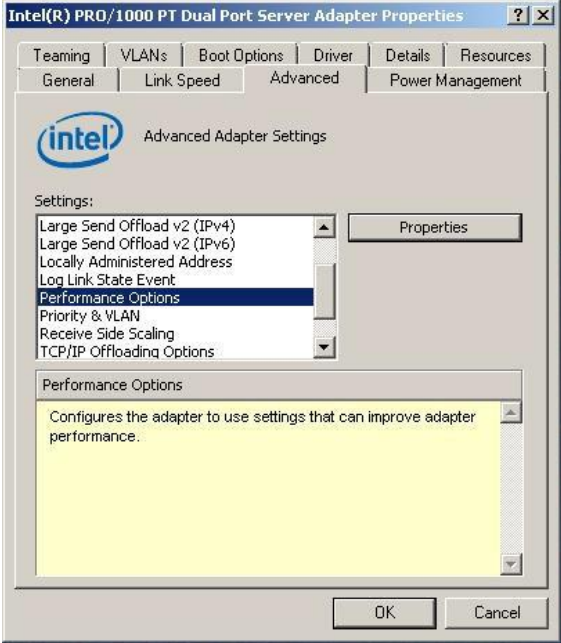
For proper operation and connectivity of any Intel NIC port used with NEXIS the settings below are required. Example below is for the Intel PRO 1000 PT.

1. For the performance settings, change the following parameters:
  - Receive Buffers to 1024
  - Transmit Buffers to 1024
2. Disable the windows firewall.

To set the Intel NIC Receive / Transmit buffers:  
Go to device manager and select each instance of the network adapter device which will be used for NEXIS connectivity.

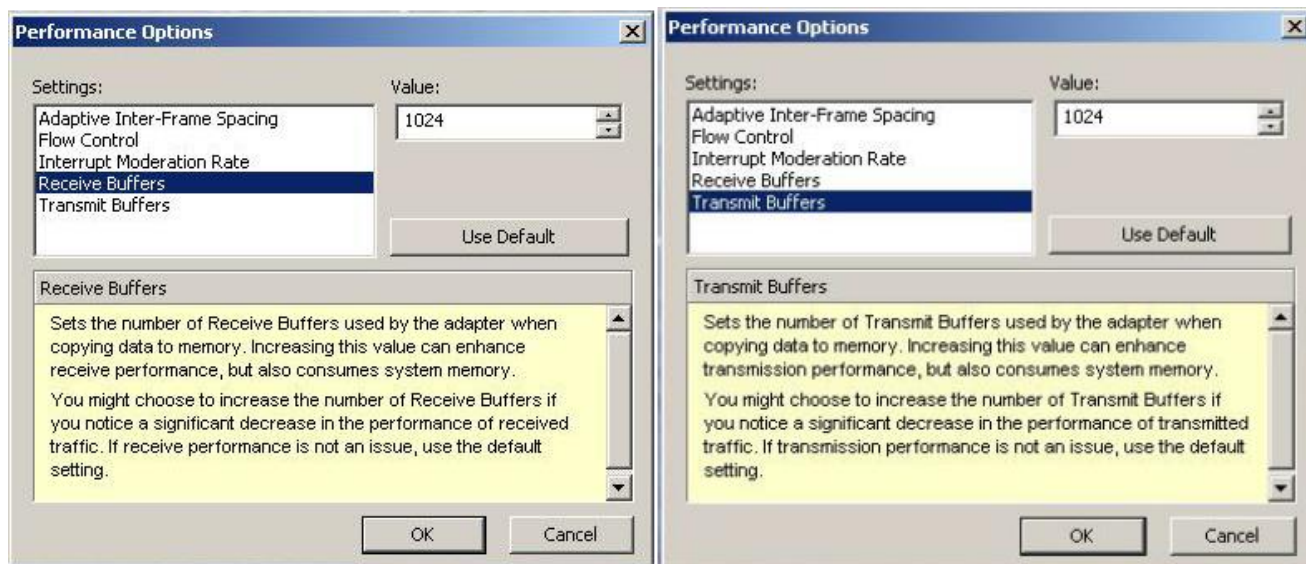


Select performance options and then select Properties.



Set Receive Buffers to 1024

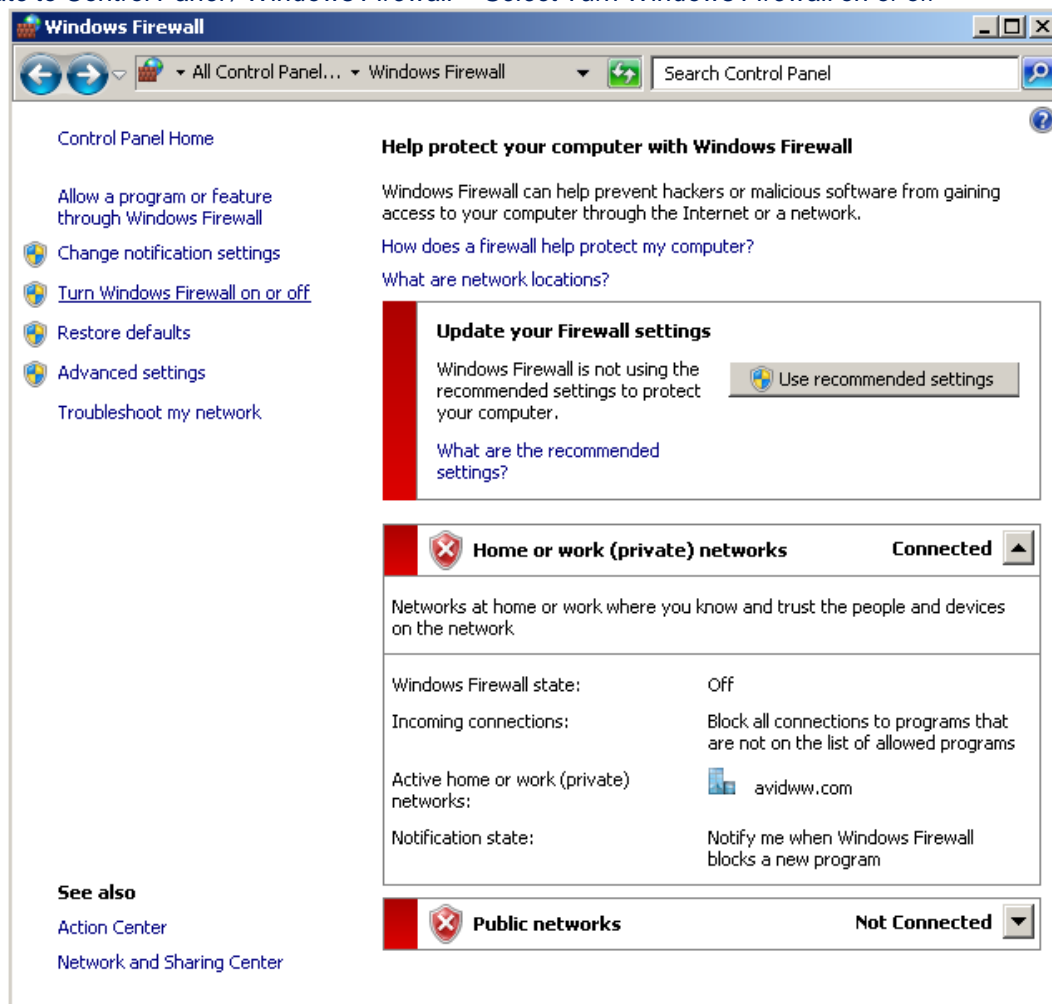
Set Transmit Buffers to 1024



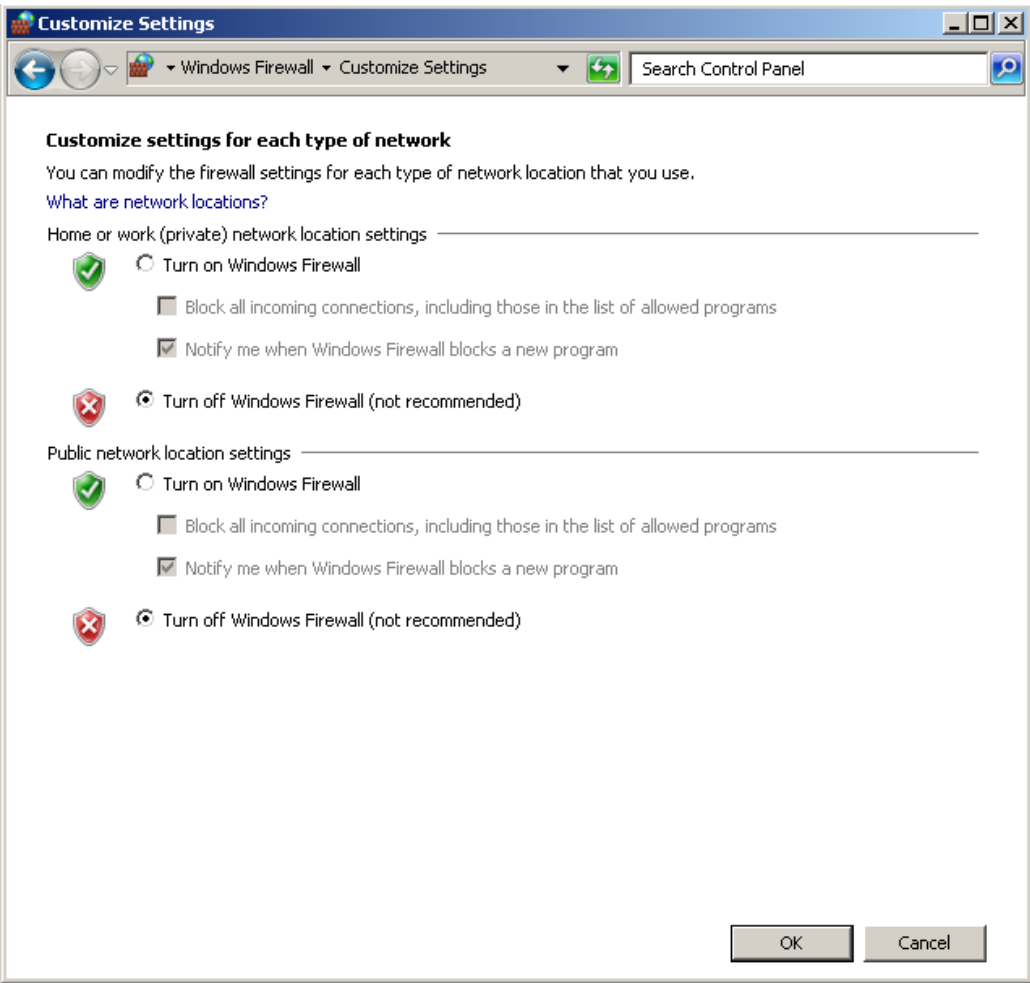
Perform this for each instance of and Intel NIC port which will be used for NEXIS connectivity.

**J.) Disable the windows firewall:**

*Navigate to Control Panel / Windows Firewall -- Select Turn Windows Firewall on or off*



Select Turn off windows firewall in both network locations, OK to save



**Revision Update**

Revision	Date	Name	Update
Rev A	Aug 22, 2018	Dave Pimm	Initial release of the DELL 3430 configuration guide