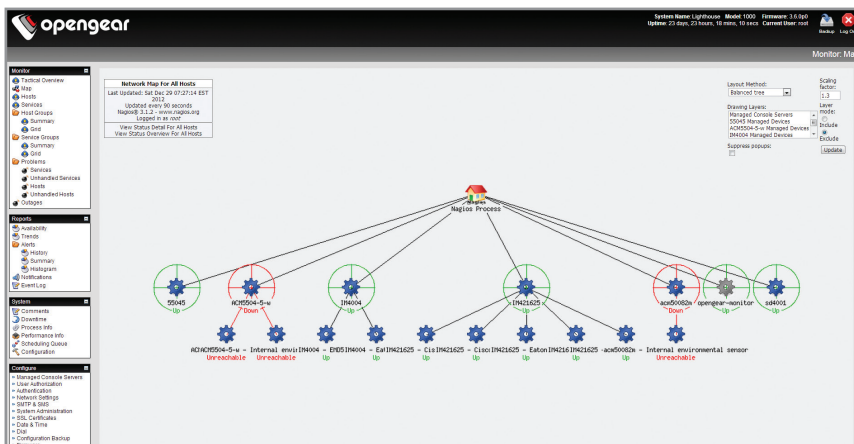


Lighthouse Secure Centralized Management

The Opengear Lighthouse solution provides centralized management of Opengear appliances and attached IT networking gear for network engineers and system administrators.

Problem: Assuring data availability requires managing environments that are often complex and geographically dispersed. Routers, switches and UPSs are all key components for maintaining uptime, but all that equipment doesn't usually exist in the same building, much less the same datacenter.

Solution: Opengear smart appliances enable secure remote access to monitor and manage distributed IT and network devices to assure business uptime. The Opengear Lighthouse solution is a central management appliance that allows network engineers and system administrators to centrally view and manage all distributed Opengear appliances - and the devices that they are managing - from a single pane of glass, anywhere at anytime.



Lighthouse Centralized Management

Monitor the status of applications, services, operating systems, networks, power and other infrastructure components in the managed networks.

Secure, centralized out-of-band management of critical IT

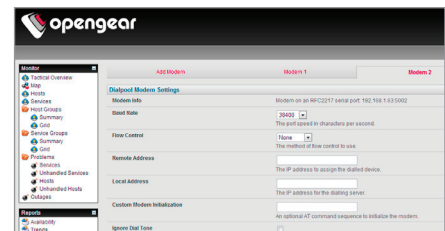
Opengear Lighthouse provides secure out-of-band centralized management of your critical IT and network gear and enables a seamless view of networking equipment through an intuitive interface to improve responsiveness.

Optimized solution for different environments

Opengear Lighthouse is a complete management solution which can be supplied as a hardware appliance or virtualized server appliance. The Lighthouse Standard 1000 server and Lighthouse Enterprise 5000 hardware appliance models are both shipped on Dell 19" rack mounted servers. The Lighthouse VM virtualized server appliance ships ready to be implemented into your hosted or in-house VMware or Linux KVM virtualized environment.

Comprehensive Remote Monitoring, Alerting and Remote Access to Remote Sites

- Secure centralized management optimized for out-of-band environments
- Central access for management up to 5,000 Opendgear devices
- Optimized user interface for out-of-band access from anywhere
- Call Home capabilities for secure management of devices behind firewalls
- Centralized dial-out capabilities for streamlined access to remote sites



Centralized Dialing

Converge remote sites that are connected in-band, or out-of-band over the cellular network or legacy PSTN.

Centralized Management Benefits

With features such as call home for connection to remote devices without inbound IP ports, and centralized dialing, you can:

- **Reduce IT costs** by streamlining overall operations, administration and maintenance of OpenGear managed devices
- **Reduce complexity** with a single pane of glass view of your distributed equipment
- **Reduce mean time to repair (MTTR)** and downtime with point-n-click out-of-band access from anywhere, anytime
- **Aggregate all networking and IT gear** into a single interface for quick alarming, access and problem remediation from a centralized location – allowing you to do more with less.

Lighthouse Model	VM	Standard	Enterprise
Recommended for	Up to 5000 managed appliances	Up to 100 managed appliances	More than 100 managed appliances
19" 1U optimized server	n/a	✓	✓
Processor	500MHz CPU core minimum	Intel Xeon E5-2420 1.90GHz	Intel Pentium G620 2.60 GHz
Hard Drive	4GB minimum	500GB	600GB
RAM	2GB minimum	2GB	16GB
Hardware RAID	n/a		✓
Dual Power Supplies	n/a		✓
Standard Factory Hardware support	n/a	✓	✓
Supported Environments	Linux Kernel-based VM VMware ESX VMware ESXi VMware Server		

Who can most benefit from the Opengear Lighthouse solution?

Corporations with geographically dispersed networking environments

Centralized access to environmental monitoring, digital I/O's, serial and network hosts. Call home and dial out capabilities are specifically designed to enable secure access to remote locations in order to optimize network uptime and staff efficiency.

Managed service providers (MSPs)

Infrastructure management with complete monitoring, single point of authentication and access to equipment behind firewalls. Maintain customer firewall integrity and enhance service level.

Enterprise help desks

Technical and product support teams, account control for specialists divisions. Secure access to routers, switches, PBX, UPS & PDU, firewall, and servers all using industry leading corporate security policies.

Remote device maintenance and warranty providers

Access devices through customer firewalls in locations where inbound access is nearly impossible such as hospitals. Perform maintenance, access logs and support equipment without having a truck roll.

Key Management Features

- Call home**
Opengear appliances establish a remote connection to Opengear Lighthouse which allows secure connection for sites behind firewalls without public IP address or incoming IP Ports.
- Centralized dial out**
Optimized user interface enables single pane of glass management of all OOB connections allowing secure remote access through one centralized experience.
- Comprehensive monitoring**
Capabilities to monitor applications, services, operating systems, network protocols, system metrics and infrastructure components.
- Problem Detection and Remediation**
Configurable alerting through E-mail or SMS allows for fast detection of infrastructure changes, and easy connection to all managed physical and virtual infrastructure.
- Strong Centralized Security and Authentication**
Secure Shell (SSH V2 and V3) tunneling support along with system event syslog, user log management and event notification help facilitate auditing and compliance. Strong authentication services (LDAP, Active Directory, RADIUS, TACACS+, and RSA SecurID) allow for optimized integration into existing infrastructures.



Technical Specifications

Lighthouse 1000 Standard
Lighthouse 5000 Enterprise

Power

Standard: Single 250W
Enterprise: Dual Hot Pluggable 550W

Dimensions

Standard 1.68 x 17 x 15.5 in.
42.7 x 431.8 x 393.7mm
Enterprise 1.68 x 17 x 25.3 in.
42.8 x 434 x 642.3mm

CPU

Standard Intel 1.9GHz Xeon E5-2420
Enterprise Intel 2.6GHz Pentium G620

Memory

Standard 500GB HD; 2GB RAM
Enterprise 600GB HD; 16GB RAM

Capacity

Standard Up to 100 Opengear devices
Enterprise Up to 5000 Opengear devices

Latest Specifications

<http://opengear.com/product-lighthouse-spec.html>

Ordering information: <http://dev.opengear.com/product-lighthouse-ordering.html>



Your Contact

Todd Rychucky
VP Sales, North & South America
Opengear Ltd
630 West 9560 South Suite A
Sandy, UT 84070

Email: sales@opengear.com
Phone: +1 888 346 6853