

KIDS SWING AND SLIDE BASKETBALL ACTIVITY SET

NBSWNGSLIDA

SAFETY & WARNINGS

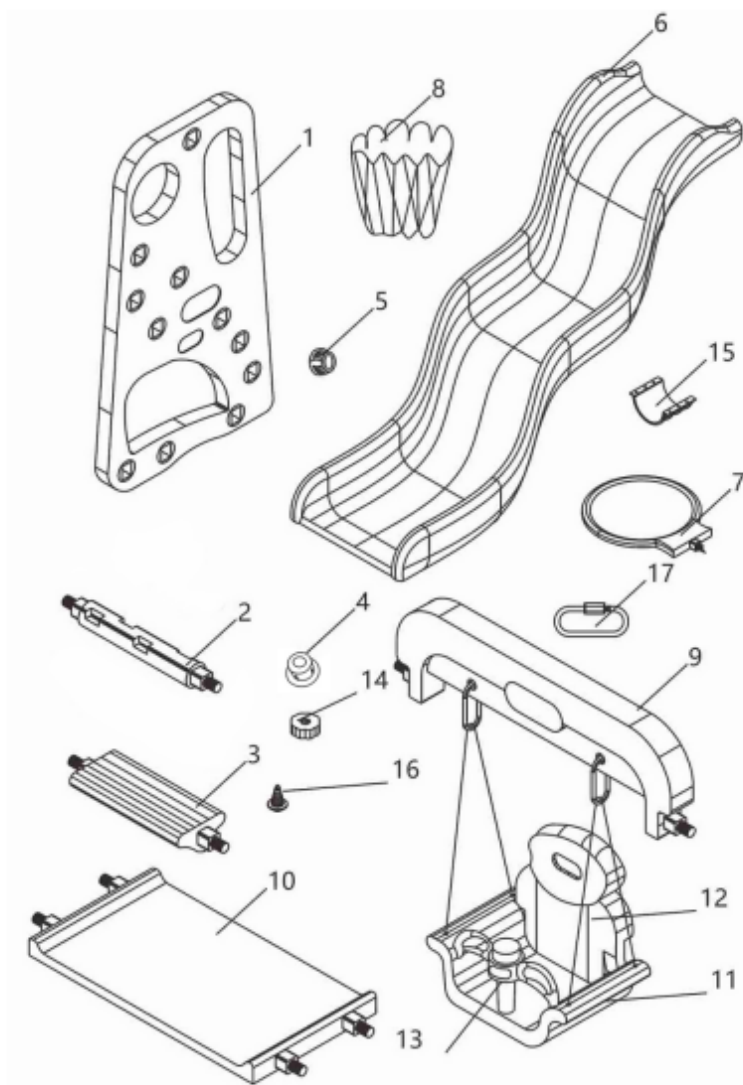
WARNING: CHOKING HAZARD – Small parts. This product contains small parts and is not suitable for children under 3 years old.



- Only to be installed on a stable surface.
- This product must only be assembled by an adult and used under the direct supervision of a guardian.
- Adult assembly is required!
- Parent supervision is required when children are playing with the climber, swing chair and slide.
- Keep all small parts and packaging materials of this product away from babies and children, as they may cause serious choking hazards.
- Do not install in humid environments, or bathrooms.
- Do not install or store near heating/high temperature equipment.
- Do not hang on, pull at, or apply weight to the basketball hoop.
- Do not use it for other purposes than the product's intention. Failure to follow this warning may result in serious injury or damage.
- Recommended age: 3+
- Slide max load: 75 kg
- Swing chair max load: 35 kg

Imported by Kogan Australia Pty Ltd,
139 Gladstone Street, South Melbourne, Vic, 3205 Australia

COMPONENTS



Part	Name	Qty
1	Side Panel	(x3)
2	Rod	(x2)
3	Steps	(x4)
4	Small nut	(x1)
5	Nut	(x19)
6	Slide	(x1)
7	Basketball Hoop	(x1)
8	Hoop Net	(x1)
9	Swing Bar	(x1)

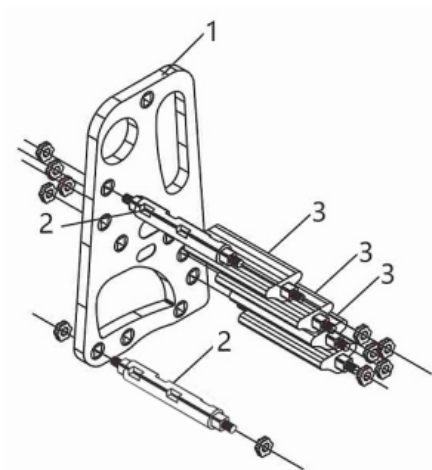
Part	Name	Qty
10	Plugboard	(x1)
11	Swing Seats	(x1)
12	Seat Back	(x1)
13	Swing Handrails	(x1)
14	Small Nut	(x1)
15	Half Button	(x1)
16	Screw	(x6)
17	Carabiner Fastener	(x2)

Not pictured: Basketballs (x3) and air pump (x1)

ASSEMBLY

Step 1:

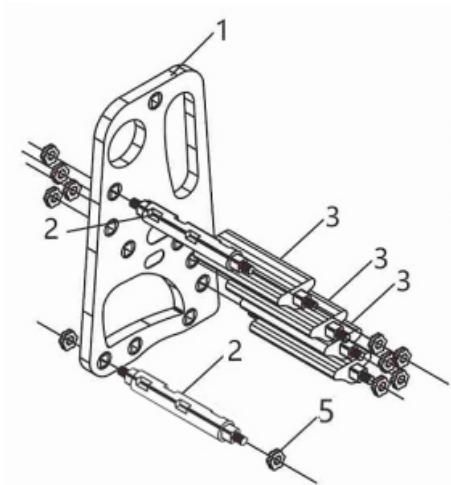
Insert the two rods (2) and the four steps (3) into the holes of the side panel (1), following the below image for position reference.



Step 2:

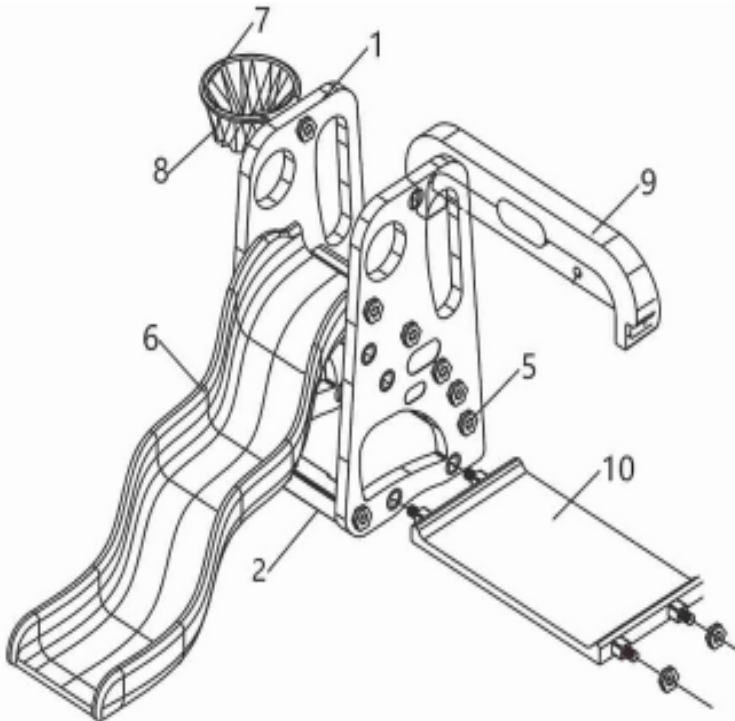
Use the nuts (5) to secure the fitted parts (2, 3, 4) to the side panel (1).

Note: Do not overtighten, as this may damage the threads of the parts.



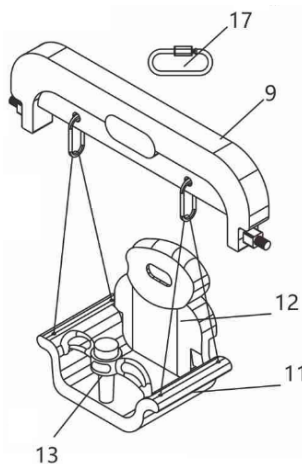
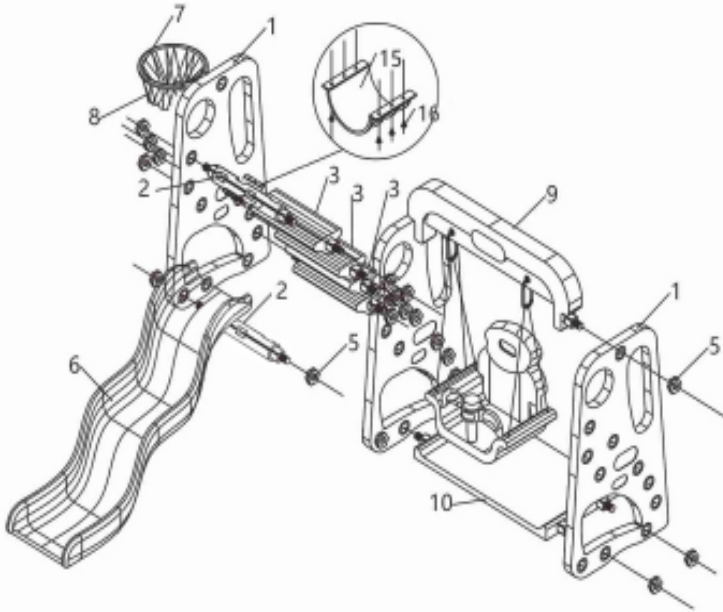
Step 3:

- Install the basketball hoop **(7)** then secure it in place with the nut **(5)**.
- Fit the net **(8)** to the hoop.
- Position the slide **(6)** and then install the middle side panel **(1)**. Secure the panel in place using the nuts **(5)**.
- Install the swing bar **(9)** and plugboard **(10)** then secure in place using the nuts **(5)**.



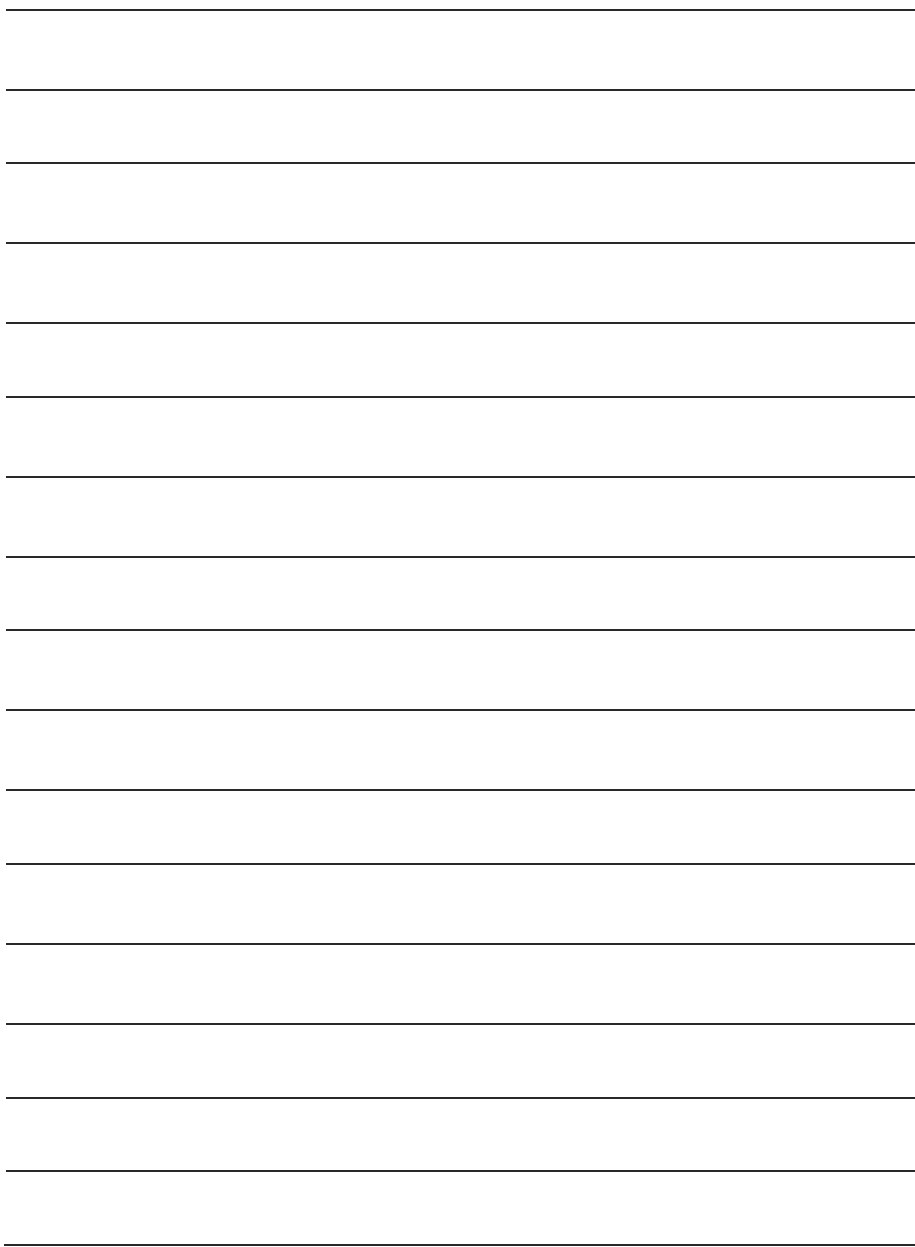
Step 4:

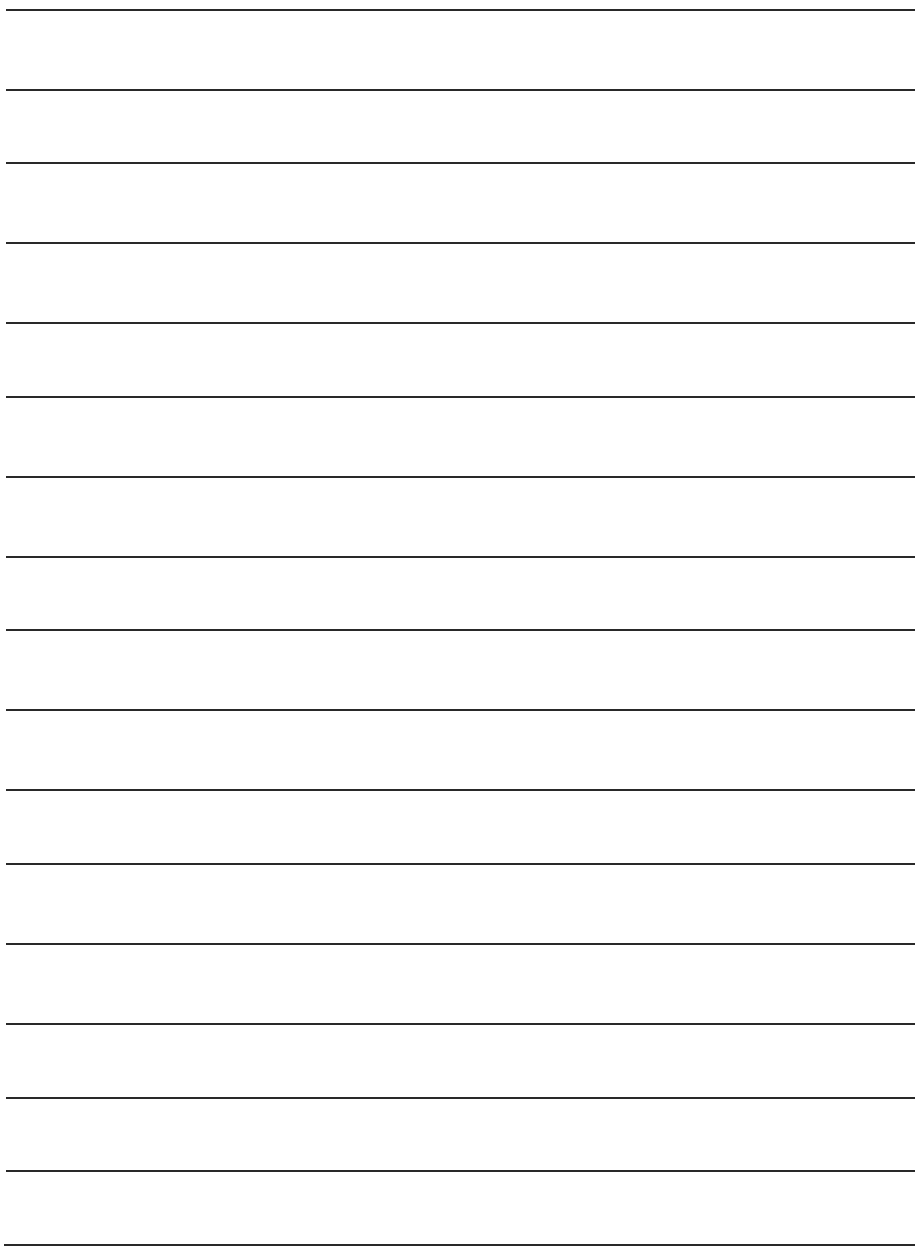
- Attach the half button (15) to the rod (2) and secure in place using the screws (16).
- Fix the slide (6) with (15) and (16) to secure.
- Fit the remaining side panel (1) to swing bar (9) and plugboard (10) with the nuts (5).
- Assemble the swing (parts 11-13) using nuts (4 & 14) and attach to swing bar (9) with the carabiner fasteners (17).



NOTES

[illegible]





Need more information?

We hope that this user guide has given you the assistance needed for a simple set-up. For the most up-to-date guide for your product, as well as any additional assistance you may require, head online to **help.kogan.com**

kogan.com