

Owner's Manual

Protect It!® 3-Outlet Surge Protector with USB Charging

With Desk Clamp: TLP310USBC

With Mounting Brackets: TLP310USBS

Important Safety Instructions	2	Product Registration	4
Installation	2	Lifetime Limited Warranty	4
TLP310USBC Desk Clamp Model	2	Ultimate Lifetime	4
TLP310USBS Mounting Brackets Model	3	Insurance Policy	

PROTECT YOUR INVESTMENT!

Register your product for quicker service
and ultimate peace of mind.

You could also win an
ISOBAR6ULTRA surge protector—
a \$100 value!



www.tripplite.com/warranty



1111 W. 35th Street, Chicago, IL 60609 USA • www.tripplite.com/support

Copyright © 2016 Tripp Lite. All rights reserved. Protect It!® is a registered trademark of Tripp Lite.

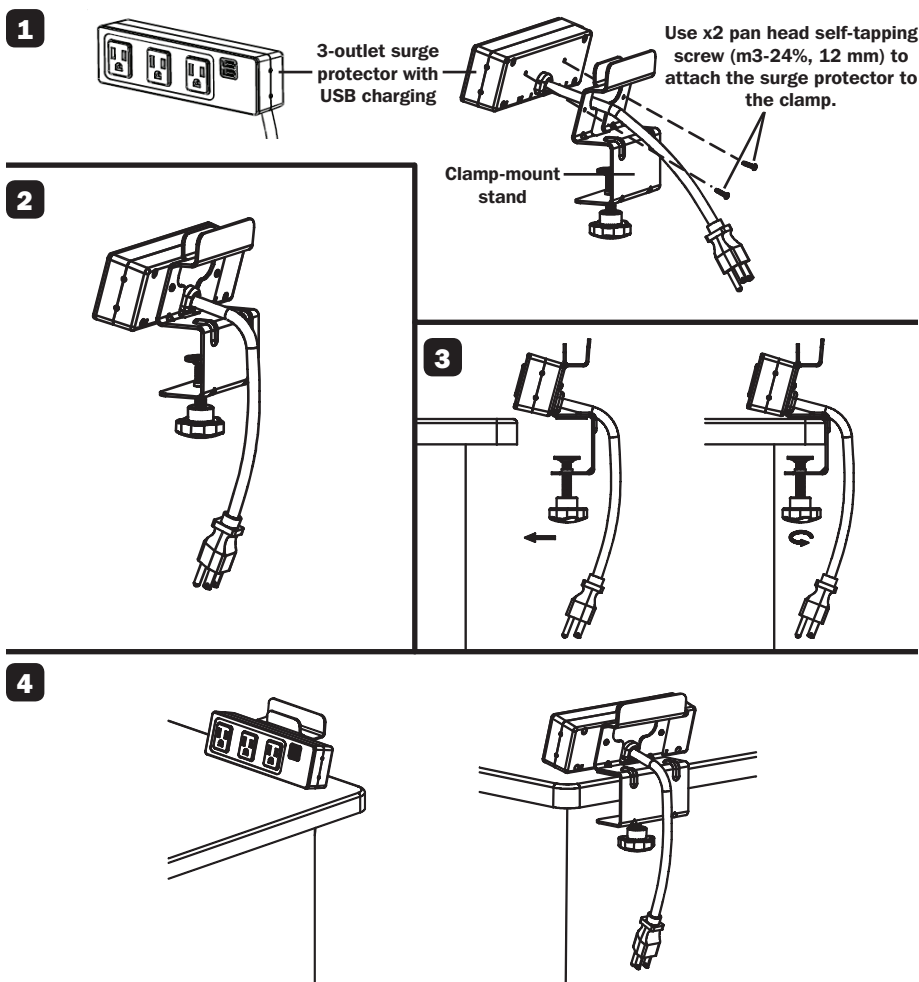
Important Safety Instructions

SAVE THESE INSTRUCTIONS

CAUTION! DO NOT connect to an ungrounded outlet. DO NOT use with 2-wire extension cords or adapters. This surge protector is designed for indoor use only. Install the surge protector away from heat-emitting appliances such as radiators or heat registers. Do not install where excessive moisture is present. Do not plug extension cords into it. Never install electrical, telephone, network or coaxial wiring during a lightning storm. Do not drill into any part of the housing or open the housing for any reason. There are no user-serviceable parts inside.

- Use of this equipment in life support applications where failure of this equipment can reasonably be expected to cause the failure of the life support equipment or to significantly affect its safety or effectiveness is not recommended. Do not use this equipment in the presence of a flammable anesthetic mixture with air, oxygen or nitrous oxide.

Installation –TLP310USBC Desk Clamp Model



Installation –TLP310USBS Mounting Brackets Model



IMPORTANT!

This unit contains two mounting hardware bags.

Use the bag as listed for the appropriate mounting installation:

Bag A – In-Desk Mounting

x2 Mounting bracket

x4 Flat head machine screw (6#32T, 1/4")

x2 Truss head self-tapping screw (M4-16T, 14 mm)

Bag B – Under/On Desk Mounting

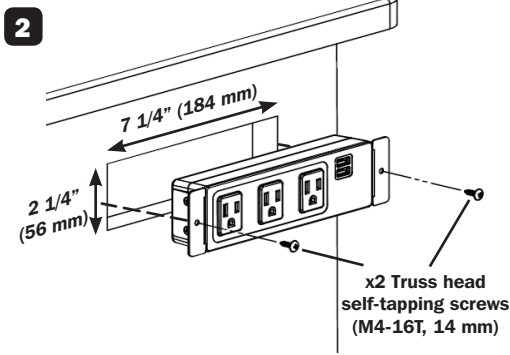
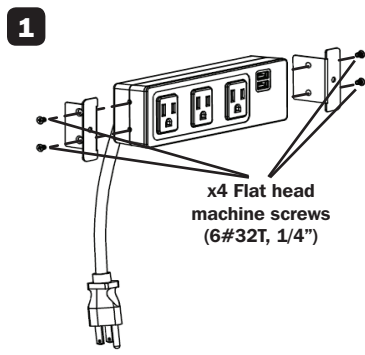
x2 Mounting bracket

x4 Flat head machine screw (6#32T, 1/4")

x4 Truss head self-tapping screw (M4-16T, 14 mm)

In-Desk Mounting

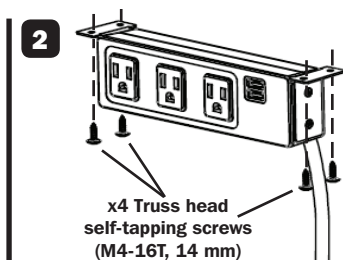
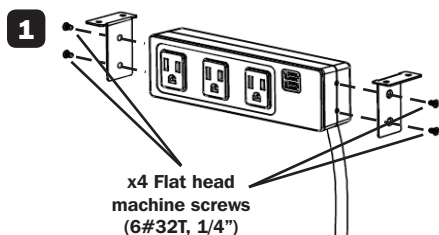
⚠ Use **Bag A** hardware contents for this installation.



Under/On Desk Mounting

⚠ Use **Bag B** hardware contents for this installation.

Under Desk



or On Desk

