

The control your fan needs to ventilate smarter.

The perfect control switch is a beautiful finishing touch, and our attractive options provide the speed, sensing and control needed for any spot ventilation solution. Sleek styles in bright white complement all designs and color palettes. All you need is the faceplate to match your décor. Installation is simple, and the results will help you breathe easy.



Single-Function Control

Model 69W

- Single Function
- Ideal for use with fan only models
- 120V, 15 amps
- Available in White



Humidity Sensing Controls

Sensaire™ Humidity Sensing Switch

Models 82A*, 82W*

- Turn any ventilation fan into a humidity-sensing solution
- Up to 4X faster humidity sensing than the competition
- Helps reduce mold and mildew to improve indoor air quality
- Three easy-to-program modes: Auto Sense Mode, Duty Cycle Mode & RH% Humidistat mode
- Rated 120V at 60Hz, max total of 9 amps/switch
- Available in Ivory (I) or White (W)

Digital Dehumidistat Model DD500W*

- Turn any ventilation fan into a humidity-sensing solution
- Reduce mold and mildew to improve indoor air quality
- Precision control enables desired humidity level to start the fan
- LED indicates fan on/off status
- Rated 120V at 60Hz, max total of 9 amps/switch
- Replaces obsolete model DH100W



Broan

	69W	P2RW	P3RW	77DV, 77DW	82A, 82W	DD500W	MS100W	SC100W	CD60W	DT100W
Ventilation Fans	670, 671, 688, 689	•				•	•	•	•	•
	E050, E070	•				•	•	•	•	•
	LP80, LP110	•				•	•	•	•	•
	LP50100DC	•				•	•		•	•
	AE50, A80, A80HD, AE80, AE80B, A110, AE110, AE80K, AE110K	•				•	•	•	•	•
	AE80S, AE110S	•	•				•	•	•	•
	AE50110DC	•				•	•		•	•
	AE50110DCS	•	•				•		•	•
	QTXE080, QTXE110, QTXE150	•				•	•	•	•	•
	QTXE110S	•	•				•	•	•	•
	QTXE110150DC	•				•	•		•	•
	QTXE110150DCS	•	•				•		•	•
	RB80, RB110	•				•	•	•	•	•
	XB50, XB80, XB110	•				•	•	•	•	•
	XB110H	•	•				•		•	•
	ZB80, ZB110	•				•	•	•	•	•
	ZB80M, ZB110M	•	•			•	•		•	•
	ZB110H	•	•				•		•	•
Ventilation Fan/Lights	657, 678, 679, 696, 751, HD80L	•	•			•	•	•	•	•
	750		•	•		•	•	•	•	•
	744, 744LED, 744L, 744RL	•	•			•	•	•	•	•
	A50L, A70L, A80L, AE80L, AE80BL, A110L, AE110L, AE80LK, AE110LK	•	•			•	•	•	•	•
	AE80SL, AE110SL		•	•			•	•	•	•
	AE50110DCL	•	•			•	•		•	•
	AE50110DCSL		•	•			•		•	•
	770RLTK, AR80LWH, AER80LWH, AER110LTK, AER110LBN	•	•			•	•	•	•	•
	AER110SLW		•	•			•	•	•	•
	QTXE080FLT, QTXE110FLT, QTXE150FLT		•	•		•	•	•	•	•
	QTXE110150DCL	•	•			•	•		•	•
	QTXE110150DCSL		•	•			•		•	•
	RB80L1, RB110L1	•	•			•	•	•	•	•
	XB50L1, XB80L1, XB110L1	•	•			•	•	•	•	•
	XB110HL1		•	•			•		•	•
	ZB80L1, ZB110L1	•	•			•	•	•	•	•
	ZB80ML1, ZB110ML1		•	•		•	•		•	•
	ZB110HL1		•	•			•		•	•
Heater/Fan/Lights	765H80LB, 765H110LB		•	•		•	•	•	•*	
	100HL, 100HFL		•	•		•	•	•	•*	
	161	•					•		•	
	162		•			•	•	•	•	•
	163	•					•		•	
	164		•			•	•	•	•	
	655		•	•		•	•	•	•*	
	656		•				•		•*	
	658		•			•	•	•	•*	
	659		•	•		•	•	•	•*	
	QTX110HL, QTX110HFLT			•	•	•	•	•	•*	

*The CD60W will work with these heater/fan/lights if the heater is wired to a separate rocker switch



NuTone		69W	P2RW	P3RW	77DV, 77DW	82A, 82W	DD500W	MS100W	SC100W	CD60W	DT100W
Ventilation Fans	695, 696N	•				•	•	•	•	•	•
	EZ80N, LPN80	•				•	•	•	•	•	•
	AEN50, AEN80, AEN80B, AN110, AEN110, AERN80K, AERN110K	•				•	•	•	•	•	•
	QTXEN080, QTXEN110, QTXEN150	•				•	•	•	•	•	•
	RN80, RN110	•				•	•	•	•	•	•
Ventilation Fan/Lights	668RP, 763, 763N, 8664RP, HB80RL	•	•			•	•	•	•	•	•
	8663RP		•	•		•	•	•	•	•	•
	744NT, 744LEDNT, 744RNL	•	•			•	•	•	•	•	•
	AN70L, AN80L, AEN80L, AEN80BL, AN110L, AEN110L, AERN80LK, AERN110LK	•	•			•	•	•	•	•	•
	AERN110DCSL		•	•				•		•	•
	770RNLTK, AERN80LWH, AERN110LTK	•	•			•	•	•	•	•	•
	AERN110SLW		•	•				•	•	•	•
	QTXEN080FLT, QTXEN110FLT, QTXEN150FLT		•	•		•	•	•	•	•	•
	QTNLEDA, QTNLEDB		•	•		•	•	•	•	•	•
	RN80L, RN110L	•	•			•	•	•	•	•	•
	Heater/Fan/Lights	765H80L, 765H110L		•	•		•	•	•	•	•*
765HL, 765HFL			•	•		•	•	•	•	•*	
605RP			•			•	•	•	•	•*	
665RP			•	•		•	•	•	•	•*	
9412D		•						•		•	
9417DN			•			•	•	•	•	•	•
9422P		•						•		•	
9427P			•			•	•	•	•	•	
9093WH, QT9093WH					•						
QTXN110HL, QTXN110HFL			•	•	•	•	•	•	•*		

*The CD60W will work with these heater/fan/lights if the heater is wired to a separate rocker switch

LIGHT COMMERCIAL WALL CONTROLS



NEW

Digital Dehumidistat

Model DD500W*

- Turn any ventilation fan into a humidity-sensing solution
- Reduce mold and mildew to improve indoor air quality
- Precision control enables desired humidity level to start the fan
- LED indicates fan on/off status
- Rated 120V at 60Hz, max total of 9 amps/switch
- Replaces obsolete model DH100W



Single-Function Control

Model 69W

- Single Function
- Ideal for use with fan only models
- 120V, 15 amps
- Available in White



Speed Control

Model SC100W*

- Turns any PSC or AC fan into an adjustable-speed fan
- Control sound levels by adjusting fan speed and CFM power
- Adjust fan speed precisely to bathroom ventilation needs to save energy
- Rated 120V at 60Hz, max total of 3 amps/switch
- Replaces obsolete models: 277V, 57V, 57W, 75V, P57W, P57WN



Delay Off Timer

Model DT100W*

- Use the 'delay' setting under the switch plate to ensure proper bathroom ventilation by keeping the fan running for 5 to 60 minutes after you leave
- Use the 'ventilation' setting to meet code requirements by ventilating the bathroom for a predetermined amount of time every hour
- User adjustable settings can be changed as much as desired until the perfect setting is found
- Designed to meet ASHRAE 62.2 and CalGreen Title 24 codes for continuous ventilation
- Rated 120V at 60Hz, max total of 6 amps/switch
- Replaces obsolete models: 64V, 64W



NEW

Two-Function Control

Model P2RW*

- Two rocker switches control any two functions: fan, light, heater or nightlight
- Save space, conveniently fitting in a single gang box
- Simple installation saves time and money
- Rated 120V at 60Hz, max total of 15 amps/switch
- Replaces obsolete models: 269VL, 269WL, 68V, 68W, P68W, P68WN



NEW

60 Minute Countdown Timer

Model CD60W*

- Set countdown timer to 20, 40 or 60 minutes
- Can also be set to run continuously
- Save energy—countdown timer ensures the fan always turns off
- LED indicates run-time remaining
- Rated 120V at 60Hz, max total of 9 amps/switch
- Replaces obsolete models: 59V, 59W, 61V, 61W, 62W, 63V, 63W, 71V, CFT12WH, P59V, P59W, P59WN, P61WN, VS63WH, VS66WH, VS67WH, VS68WH, VS69WH



Variable Speed Control

Model 80L

- Adjust ventilation easily in any room
- Variable Speed Control mounts inside the fan housing and enables blower speed adjustment
- For Broan High Capacity Fans L100–L900
- Speed control with metal housing
- Perforated fan insulation for easy installation
- 120V, 3 amps, 60 Hz

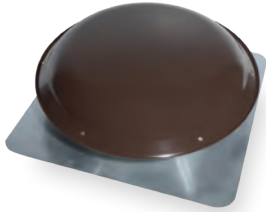
Wall Controls

Model	L100–L700 Series	L900 Series	L1500 Series	L2000L	HD50L HD80L
SC100W	•				
CD60W	•	•	•	•	
DT100W	•	•			
P2RW					•
69W	•	•	•	•	
80L	•	•			
DD500W	•	•	•	•	

* Faceplate not included

General Features & Benefits

- Reduces moisture in attic
- Lowers temperature of home in summer
- Metal flashing allows for nailing and hot tar application
- Compatible with the following Broan controls:
Model 69V (Ivory) / 69W (White) Single-Function Control,
Model 68V (Ivory) / 68W (White) Two-Function Control,
Model 72V (Ivory) / 72W (White) Electronic Variable Speed Control—6 amp
- Mesh bird screen
- Built-in adjustable thermostat for automatic operation at your chosen temperature
- Mounts easily between rafters, installation template included



349BR
While supplies last



350BR, 355BR, 356BR
While supplies last



350BK, 355BK, 356BK
While supplies last



358



353, 35316
• Galvanized steel housing for added strength

- Combine with automatic shutter (model 433) to get optimum efficiency and performance



DD500W Remote In-Line Ventilator

Turn any ventilation fan into a humidity-sensing solution. Reduce mold and mildew to improve indoor air quality. Precision control enables desired humidity level to start the fan.



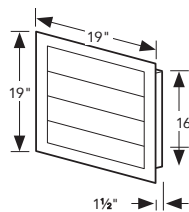
Model 73

High Temperature Cut-off sold separately for use with all Broan powered attic ventilators. High temperature controls automatically turn off the ventilator at 204°F. For additional switches see page 50–51

Powered Attic Ventilation Specifications

Model	Attic Sq Ft	AMPs	CFM*	RPM	Height	Diameter	Dome Material	Color
Roof Mount								
349BR**	Up to 1400	4	1000	1050	9	24½	Painted Steel	Dark Brown
350BR** 350BK**	Up to 1500	3.6	1050	1000	8	23¼	PVC	Brown/Black
355BR 355BK	Up to 1715	4.3	1000	1050	8	23¼	PVC	Brown/Black
356BR ** 356BK	Up to 2285	8.0	1600	1500	8	23¼	PVC	Brown/Black
358	Up to 1715	4.3	1000	1050	8	23¼	Aluminum	Silver
Gable Mount								
353†	Up to 1460	3.4	1020 / 760**	1030	—	—	—	—
35316†	Up to 2285	3.9	1600 / 1160**	1420	—	—	—	—

**While supplies last



For use with Broan Models 353, 35316, 345GOBK or 345GOWW.

433 Automatic Shutter for Gable Mount Attic Ventilators

- Feature counter-balanced aluminum vanes that automatically open and close when the ventilator turns on and off
- Better air flow than stationary attic louvers
- Extruded aluminum frame fits flush with outside wall
- Weather-tight closure
- Easy to install

