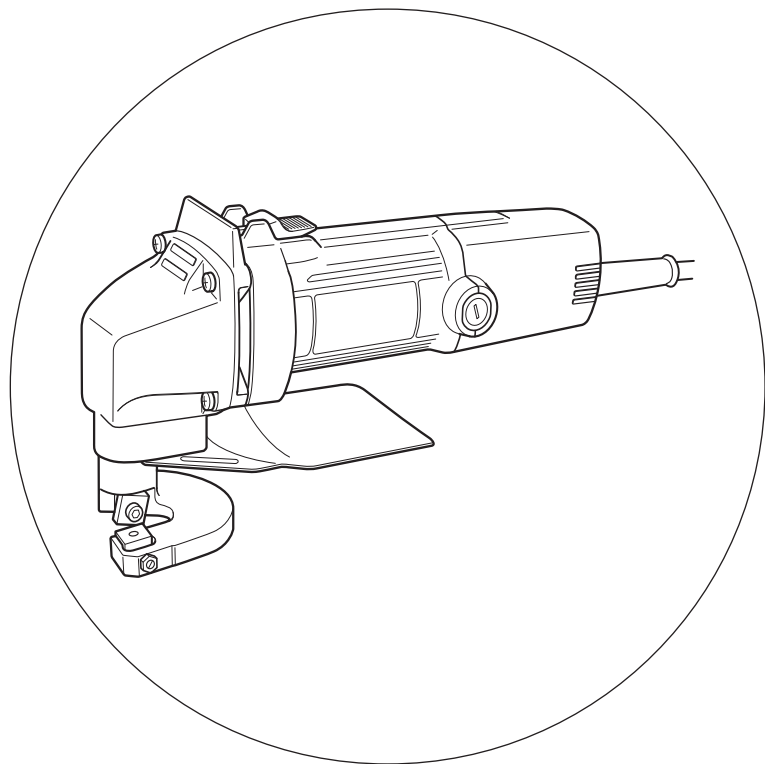


# HIKOKI

电剪刀  
Hand Shear

## CE 16SA

中文  
English



保留备用  
Keep for future reference



使用说明书  
Handling instructions



## 目次

电动工具通用安全警告 .....	2	用途.....	5
使用电剪刀使得注意事项.....	4	作业之前.....	5
符号.....	4	剪切.....	6
零件名称.....	4	更换刀片.....	7
规格.....	5	维护和检查.....	7
标准附件.....	5	维修零部件一览表.....	8

## 电动工具通用安全警告

### ⚠ 警告！

阅读所有警告和所有说明。

不遵照以下警告和说明会导致电击、着火和 / 或严重伤害。

保存所有警告和说明书以备查阅。

在所有下列的警告中术语“电动工具”指市电驱动(有线)电动工具或电池驱动(无线)电动工具。

#### 1) 工作场地的安全

- a) 保持工作场地清洁和明亮。  
混乱和黑暗的场地会引发事故。
- b) 不要在易爆环境，如有易燃液体、气体或粉尘的环境下操作电动工具。  
电动工具产生的火花会点燃粉尘或气体。
- c) 让儿童和旁观者离开后操作电动工具。  
注意力不集中会使操作者失去对工具的控制。

#### 2) 电气安全

- a) 电动工具插头必须与插座相配。绝不能以任何方式改装插头。需接地的电动工具不能使用任何转换插头。  
未经改装的插头和相配的插座将减少电击危险。
- b) 避免人体接触接地表面，如管道、散热片和冰箱。  
如果你身体接地会增加电击危险。
- c) 不得将电动工具暴露在雨中或潮湿环境中。  
水进入电动工具将增加电击危险。
- d) 不得滥用电线。绝不能用电线搬运、拉动电动工具或拔出其插头。使电线远离热源、油、锐边或运动部件。  
受损或缠绕的软线会增加电击危险。
- e) 当在户外使用电动工具时，使用适合户外使用的外接软线。  
适合户外使用的软线将减少电击危险。

- f) 如果在潮湿环境下操作电动工具是不可避免的，应使用剩余电流动作保护器（RCD）。  
使用RCD可减小电击危险。

### 3) 人身安全

- a) 保持警觉，当操作电动工具时关注所从事的操作并保持清醒。当你感到疲倦，或在有药物、酒精或治疗反应时，不要操作电动工具。  
在操作电动工具时瞬间的疏忽会导致严重人身伤害。
- b) 使用个人防护装置。始终佩戴护目镜。  
安全装置，诸如适当条件下使用防尘面具、防滑安全鞋、安全帽、听力防护等装置能减少人身伤害。
- c) 防止意外起动。确保开关在连接电源和 / 或电池盒、拿起或搬运工具时处于关断位置。  
手指放在已接通电源的开关上或开关处于接通时插入插头可能会导致危险。
- d) 在电动工具接通之前，拿掉所有调节钥匙或扳手。  
遗留在电动工具旋转零件上的扳手或钥匙会导致人身伤害。
- e) 手不要伸展得太长。时刻注意立足点和身体平衡。  
这样在意外情况下能很好地控制电动工具。
- f) 着装适当。不要穿宽松衣服或佩戴饰品。让衣服、手套和头发远离运动部件。  
宽松衣服、佩饰或长发可能会卷入运动部件中。
- g) 如果提供了与排屑、集尘设备连接用的装置，要确保它们连接完好且使用得当。  
使用这些装置可减少尘屑引起的危险。

### 4) 电动工具使用和注意事项

- a) 不要滥用电动工具，根据用途使用适当的电动工具。  
选用适当设计的电动工具会使你工作更有效、更安全。
- b) 如果开关不能接通或关断工具电源，则不能使用该电动工具。  
不能用开关来控制的电动工具是危险的且必须进行修理。
- c) 在进行任何调节、更换附件或贮存电动工具之前，必须从电源上拔掉插头和 / 或使电池盒与工具脱离。  
这种防护性措施将减少工具意外起动的危险。
- d) 将闲置不用的电动工具贮存在儿童所及范围之外，并且不要让不熟悉电动工具或对这些说明不了解的人操作电动工具。  
电动工具在未经培训的用户手中是危险的。
- e) 保养电动工具。检查运动件是否调整到位或卡住，检查零件破损情况和影响电动工具运行的其他状况。如有损坏，电动工具应在使用前修理好。  
许多事故由维护不良的电动工具引发。

## 中文

- f) 保持切削刀具锋利和清洁。  
保养良好的有锋利切削刃的刀具不易卡住而且容易控制。
- g) 按照使用说明书，考虑作业条件和进行的作业来使用电动工具、附件和工具的刀头等。  
将电动工具用于那些与其用途不符的操作可能会导致危险。

### 5) 维修

- a) 将你的电动工具送交专业维修人员，使用同样的备件进行修理。  
这样将确保所维修的电动工具的安全性。

## 注意！

不可让儿童和体弱人士靠近工作场所。  
应将不使用的工具存放在儿童和体弱人士接触不到的地方。

## 使用电剪刀使得注意事项

1. 请注意切口  
刚被电剪刀剪切开的切口很锋利，请不要被此切口碰伤。
2. 在刀片达到适当速度时，方可开始剪切。  
打开开关后，请等到刀片达到适当速度时再开始剪切。
3. 请保护好电源线。  
请注意保护好电源线。不要被切口割破外壳或割断。

## 符号

### 警告！

如下所示的符号用于本机。使用前请务必理解其含意。



为降低伤害风险，用户必须阅读使用说明书

## 零件名称

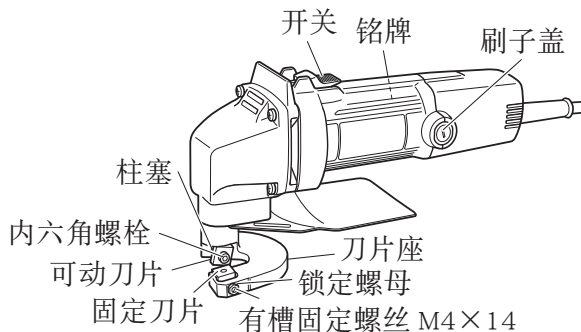


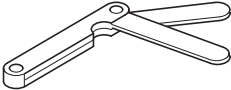

图 1

## 规格

电压	220 V ~	
输入功率	400 W	
剪切能力	软钢板 (400 N/mm <sup>2</sup> )	1.6 mm
	不锈钢板 (600 N/mm <sup>2</sup> )	1.2 mm
	铝板 (200 N/mm <sup>2</sup> )	2.3 mm
不加负载时的行程次数	4700 /min	
重量 (不含线缆)	1.7 kg	

## 标准附件

除了主机 (1 台) 外, 产品包中还包括表中所列的附件。

厚度量规		1
六角杆扳手		1

## 用途

○ 用于剪切钢板、黄铜板、铜板、铝板、不锈钢板、铜板及其他金属板, 也可以用于剪切皮革和纤维板。

## 作业之前

1. 电源  
确认所使用的电源与工具铭牌上标示的规格是否相符。
2. 电源开关  
确认电源开关是否切断。若电源开关接通, 则插头插入电源插座时电动工具将出其不意地立刻转动, 从而招致严重事故。
3. 延伸线缆  
若作业场所移到离开电源的地方, 应使用容量足够、铠装合适的延伸线缆, 并且要尽可能地短些。

## 中文

### 4. 调整剪切刀片之间的水平间隔

请按下列顺序（图 3），将刀片之间的水平间隔（图 2 中的 A）调至要剪切的钢板厚度的 1/10 左右。

- (1) 先将扣紧固定刀片的内六角螺栓松开，然后再将 M4 链定螺母松开，并轻轻地将 M4 有槽固定螺丝推回。
- (2) 从所备的厚度量规中，选择一个其厚度是剪切板厚度的 1/10 的量规。厚度量规的厚度被标注在量规上。将量规插入刀片之间并松松地旋上内六角螺栓后，用螺丝刀旋转 M4 有槽固定螺丝，直至固定刀片碰到厚度量规为止。
- (3) 如刀片间的间隔大于剪切板的厚度切口将会变毛。如刀片间的间隔太窄，将会影响剪切速度。需要剪切曲线时，请将刀片的间隔稍调大，以便于操作。
- (4) 调节完毕后，请紧紧地旋紧 M4 螺母，否则，在操作期间 M4 螺母会变松。
- (5) 将用于扣紧固定刀片的内六角螺栓紧紧旋紧。

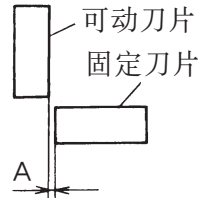


图 2



图 3

## 剪切

### 注意！

- 切勿剪切厚度超过电剪刀能力的平板。否则，会导致电剪刀的过早破损。
- 只有将平板牢牢固定住之后，才能开始剪切操作。

剪切薄板时，请按图 4 所示方法，水平地拿着电剪刀。

为了便于剪切厚板，如切落边缘向左移动（图 4）时，请稍抬高电剪刀的后部，而切落边缘向右移动时，请稍降低电剪刀的后部。

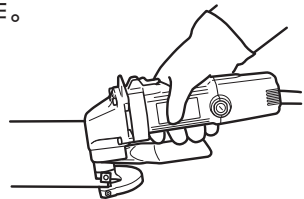


图 4

## 更换刀片

本电剪刀使用一次性刀片。每个刀片有 8 个剪切口（如图 5 所示），每个剪切口切了 400 米的平板后，其剪切性能便会下降。这时，请使用另一剪切口。当 8 个剪切口都被用过并被损坏之后，请更换刀片。

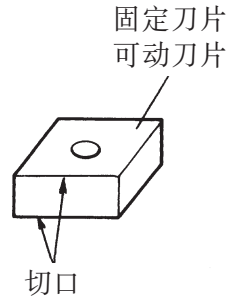


图 5

## 维护和检查

### 1. 检查刀片

如使用损坏了的或有凹口的刀片，会引起马达超负并影响电剪刀的工作性能。因此，请使用性能良好的刀片。

### 2. 检查安装螺钉

要经常检查安装螺钉是否紧固妥善。若发现螺钉松了，应立即重新扭紧，否则会导致严重的事故。

### 3. 电动机的维护

电动机绕线是电动工具的“心脏部”。应仔细检查有无损伤，是否被油液或水沾湿。

### 4. 检查炭刷（图 6）

电动机上的炭刷是一种消耗品，其磨耗度一旦超出了“磨损极限”，电动机将发生故障。因此，磨耗了的炭刷应即更换新件。此外，炭刷必须常保干净状态，这样才能在刷握里自由滑动。

### 5. 炭刷的更换

用一字形头螺丝刀拆卸刷盖，炭刷就可简单地取下。

### 6. 维修零部件一览表

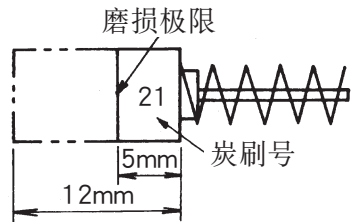


图 6

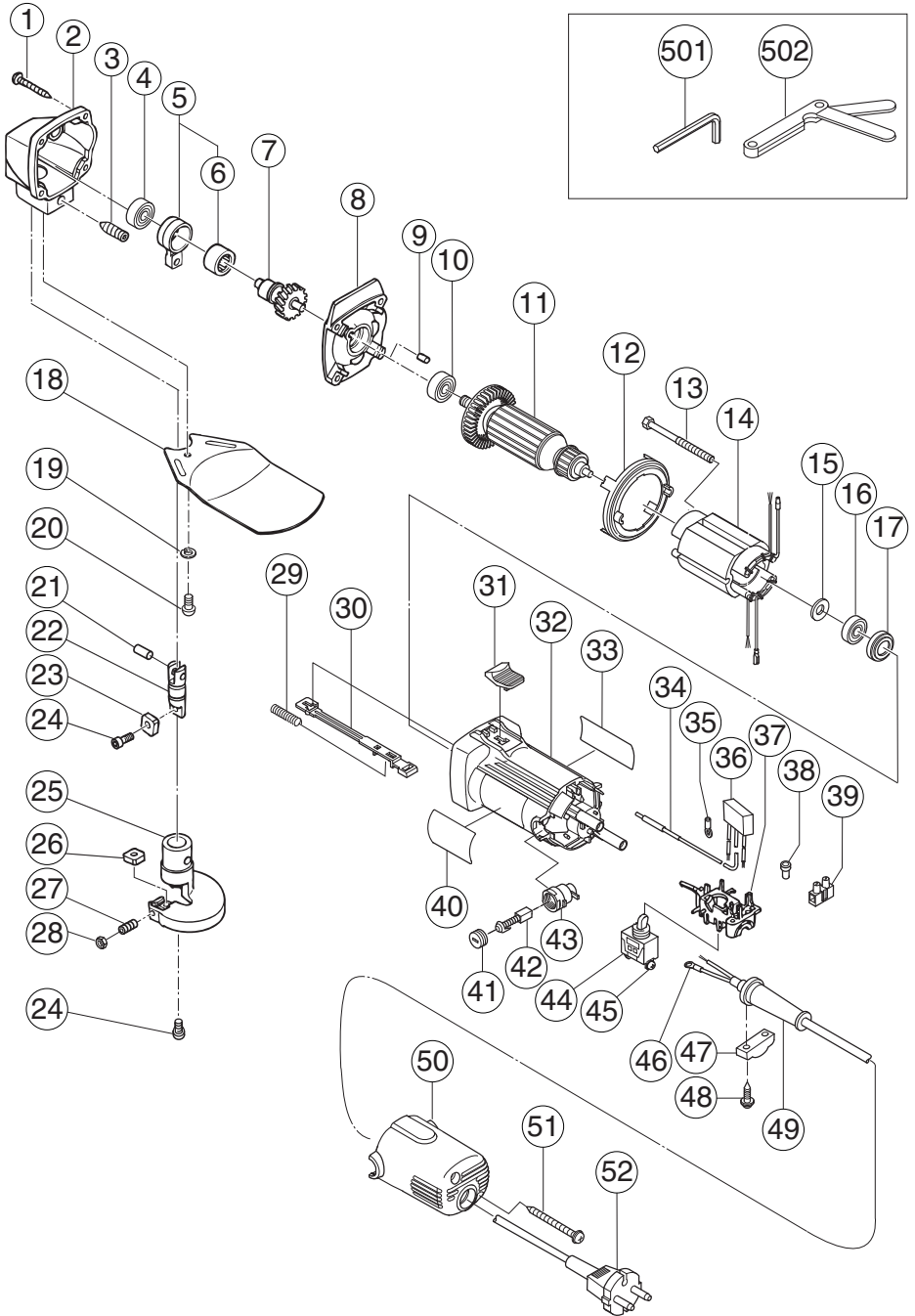
## 注意！

HiKOKI牌电动工具的维修、改造和检查须由经HiKOKI公司授权的维修中心进行。

当要求维修或其他保养服务时，若将此零部件一览表与电动工具一起呈交给经HiKOKI公司授权的维修中心，将有助于维修或保养工作。

在操作和维修电动工具时，必须遵守贵国制定的安全的有关规则和标准。

# 维修零部件一览表





项目号	代码号	使用数	备注	项目号	代码号	使用数	备注
1	957-580	4	D5×30	36	994-273	1	
2	998-003	1		37	314-432	1	
3	998-008	1	M8×20	38	959-140	1	
4	608-VVM	1	608VVC2PS2L	39	938-307	1	
5	998-004	1	"6"	40	—————	1	
6	993-163	1	M152112	41	936-551	2	
7	998-006	1		42	999-021	2	
8	998-002	1		43	313-777	2	
9	931-701	1		44	314-603	1	
10	608-VVM	1	608VVC2PS2L	45	305-499	2	M3.5×6
11	360-622E	1	220V-230V	46	980-063	1	
12	306-840	1		47	937-631	1	
13	982-021	2	D4×70	48	984-750	2	D4×16
14	340-567E	1	220V-230V	49	953-327	1	D8.8
15	942-204	1		50	314-433	1	
16	626-VVM	1	626VVC2PS2L	51	301-815	2	D4×45
17	309-929	1		52	500455Z	1	
18	998-010	1		501	943-277	1	3MM
19	949-454	1	M5	502	949-128	1	
20	949-237	1	M5×15				
21	993-546	1	D6				
22	998-005	1					
23	998-000	1					
24	949-812	2	M4×10				
25	998-007	1					
26	998-001	1					
27	998-009	1	M4×14				
28	949-565	1	M4				
29	314-429	1					
30	314-427	1					
31	314-428	1					
32	314-438	1	"17"				
33	—————	1					
34	314-854	1					
35	311-741	1					

## CONTENTS

GENERAL POWER TOOL SAFETY WARNINGS .....	10
PRECAUTIONS ON USING THE HAND SHEAR .....	12
SYMBOL .....	13
NAME OF PARTS .....	13
SPECIFICATIONS .....	13
STANDARD ACCESSORIES .....	14
APPLICATION .....	14
PRIOR TO OPERATION .....	14
CUTTING .....	15
BLADE REPLACEMENT .....	15
MAINTENANCE AND INSPECTION .....	15
SERVICE PARTS LIST .....	17

## GENERAL POWER TOOL SAFETY WARNINGS

### WARNING

**Read all safety warnings and all instructions.**

*Failure to follow the warnings and instructions may result in electric shock, fire and/or serious injury.*

**Save all warnings and instructions for future reference.**

*The term “power tool” in the warnings refers to your mains-operated (corded) power tool or battery-operated (cordless) power tool.*

- 1) **Work area safety**
  - a) **Keep work area clean and well lit.**  
*Cluttered or dark areas invite accidents.*
  - b) **Do not operate power tools in explosive atmospheres, such as in the presence of flammable liquids, gases or dust.**  
*Power tools create sparks which may ignite the dust or fumes.*
  - c) **Keep children and bystanders away while operating a power tool.**  
*Distractions can cause you to lose control.*
  
- 2) **Electrical safety**
  - a) **Power tool plugs must match the outlet.**  
**Never modify the plug in any way.**  
**Do not use any adapter plugs with earthed (grounded) power tools.**  
*Unmodified plugs and matching outlets will reduce risk of electric shock.*
  - b) **Avoid body contact with earthed or grounded surfaces, such as pipes, radiators, ranges and refrigerators.**  
*There is an increased risk of electric shock if your body is earthed or grounded.*

- c) **Do not expose power tools to rain or wet conditions.**  
*Water entering a power tool will increase the risk of electric shock.*
- d) **Do not abuse the cord. Never use the cord for carrying, pulling or unplugging the power tool.**  
**Keep cord away from heat, oil, sharp edges or moving parts.**  
*Damaged or entangled cords increase the risk of electric shock.*
- e) **When operating a power tool outdoors, use an extension cord suitable for outdoor use.**  
*Use of a cord suitable for outdoor use reduces the risk of electric shock.*
- f) **If operating a power tool in a damp location is unavoidable, use a residual current device (RCD) protected supply.**  
*Use of an RCD reduces the risk of electric shock.*

### 3) Personal safety

- a) **Stay alert, watch what you are doing and use common sense when operating a power tool.**  
**Do not use a power tool while you are tired or under the influence of drugs, alcohol or medication.**  
*A moment of inattention while operating power tools may result in serious personal injury.*
- b) **Use personal protective equipment. Always wear eye protection.**  
*Protective equipment such as dust mask, non-skid safety shoes, hard hat, or hearing protection used for appropriate conditions will reduce personal injuries.*
- c) **Prevent unintentional starting. Ensure the switch is in the off position before connecting to power source and/or battery pack, picking up or carrying the tool.**  
*Carrying power tools with your finger on the switch or energising power tools that have the switch on invites accidents.*
- d) **Remove any adjusting key or wrench before turning the power tool on.**  
*A wrench or a key left attached to a rotating part of the power tool may result in personal injury.*
- e) **Do not overreach. Keep proper footing and balance at all times.**  
*This enables better control of the power tool in unexpected situations.*
- f) **Dress properly. Do not wear loose clothing or jewellery. Keep your hair, clothing and gloves away from moving parts.**  
*Loose clothes, jewellery or long hair can be caught in moving parts.*
- g) **If devices are provided for the connection of dust extraction and collection facilities, ensure these are connected and properly used.**  
*Use of dust collection can reduce dust-related hazards.*

### 4) Power tool use and care

- a) **Do not force the power tool. Use the correct power tool for your application.**  
*The correct power tool will do the job better and safer at the rate for which it was designed.*
- b) **Do not use the power tool if the switch does not turn it on and off.**  
*Any power tool that cannot be controlled with the switch is dangerous and must be repaired.*

## English

- c) **Disconnect the plug from the power source and/or the battery pack from the power tool before making any adjustments, changing accessories, or storing power tools.**

*Such preventive safety measures reduce the risk of starting the power tool accidentally.*

- d) **Store idle power tools out of the reach of children and do not allow persons unfamiliar with the power tool or these instructions to operate the power tool.**

*Power tools are dangerous in the hands of untrained users.*

- e) **Maintain power tools. Check for misalignment or binding of moving parts, breakage of parts and any other condition that may affect the power tool's operation.**

**If damaged, have the power tool repaired before use.**

*Many accidents are caused by poorly maintained power tools.*

- f) **Keep cutting tools sharp and clean.**

*Properly maintained cutting tools with sharp cutting edges are less likely to bind and are easier to control.*

- g) **Use the power tool, accessories and tool bits etc. in accordance with these instructions, taking into account the working conditions and the work to be performed.**

*Use of the power tool for operations different from those intended could result in a hazardous situation.*

### 5) Service

- a) **Have your power tool serviced by a qualified repair person using only identical replacement parts.**

*This will ensure that the safety of the power tool is maintained.*

## CAUTION

Keep children and infirm persons away.

When not in use, tools should be stored out of reach of children and infirm persons.

## PRECAUTIONS ON USING THE HAND SHEAR

1. **Beware of sharp panel edges.**  
The edge of the plate just cut by the hand shear is very sharp. Take care in not getting hurt by the sharp edge.
2. **Start cutting only after the blade attains the proper speed.**  
After turning on the power switch, wait until the blade attains the proper speed, then start cutting.
3. **Preserve the power cord.**  
Be sure that the power cord is not abraded or cut by the sharp edge of the cut panel.

## SYMBOL

### WARNING

The following show symbols used for the machine. Be sure that you understand their meaning before use.



To reduce the risk of injury, user must read instruction manual.

## NAME OF PARTS

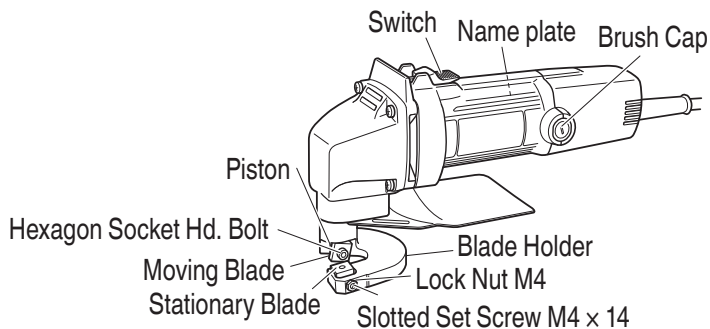


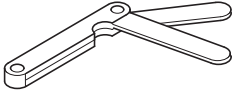

Fig. 1

## SPECIFICATIONS

Voltage		220 V ~
Input		400 W
Cutting capacity	Mild steel plate (400 N/mm <sup>2</sup> )	1.6 mm
	Stainless steel plate (600 N/mm <sup>2</sup> )	1.2 mm
	Aluminum plate (200 N/mm <sup>2</sup> )	2.3 mm
Number of strokes at no load		4700 /min
Weight (without cord)		1.7 kg

## STANDARD ACCESSORIES

In addition to the main unit (1 unit), the package contains the accessories listed in the below.

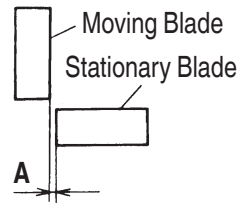
Thickness gauge		1
Hexagon bar wrench		1

## APPLICATION

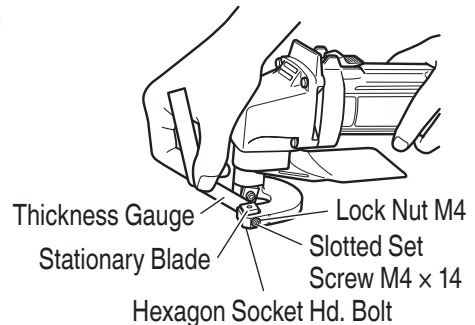
- For shearing steel plate, brass plate, copper plate, aluminum plate, stainless steel plate, tin plate, and other metal plates, also leather and fiberboard.

## PRIOR TO OPERATION

1. Power source  
Ensure that the power source to be utilized conforms to the power requirements specified on the product nameplate.
2. Power switch  
Ensure that the power switch is in the OFF position. If the plug is connected to a receptacle while the power switch is in the ON position, the power tool will start operating immediately, which could cause a serious accident.
3. Extension cord  
When the work area is removed from the power source, use an extension cord of sufficient thickness and rated capacity. The extension cord should be kept as short as practicable.
4. Adjusting the horizontal gap between the shearing blades  
Adjust the horizontal gap between the shearing blades (A in **Fig. 2**) at approximately 1/10 the steel plate thickness to be sheared, according to the following procedures. (**Fig. 3**)
  - (1) Loosen the hexagonal socket bolts fastening the stationary blade. Loosen the M4 lock nut, and push back the M4 slotted set screws slightly.



**Fig. 2**



**Fig. 3**

- (2) From the supplied thickness gauges, select one that is 1/10 the thickness of the panel to be cut. Thickness of each thickness gauge is marked thereon. Insert the gauge in between the blades, then tighten the hexagonal socket bolts very loosely. Next, use a screwdriver to turn the M4 slotted set screws to position the stationary blade until it hits the thickness gauge.
- (3) If the space between blades is larger than the thickness of the panel to be cut, there will be burrs for a less than clean cut. If the space between blades is too narrow, cutting speed will be affected. For cutting in a curved line, making the space a little bigger will make the cutting easier.
- (4) After adjustment, tighten the M4 nuts securely so they will not loosen during operation.
- (5) Securely tighten the hexagonal socket bolts fastening the stationary blade.

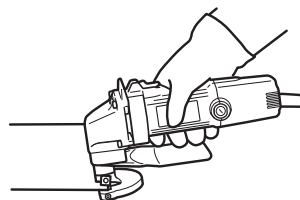
## CUTTING

### CAUTION

- Do not attempt to cut panels of thicknesses that are beyond the capability of the hand shear. Doing so will result in premature breakage of the hand shear.
- Perform the cutting operation only after the panel is fixed securely.

When cutting thin panels, level the unit horizontally, as shown in **Fig. 4**.

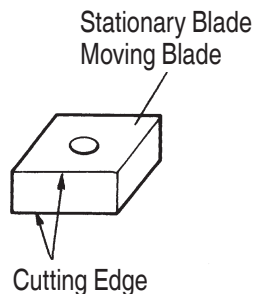
To facilitate smooth cutting of thick panels, if the cut-off side goes toward the left, (**Fig. 4**) raise the rear of the unit slightly. And if the cut-off side goes toward the right, lower the rear of the unit slightly.



**Fig. 4**

## BLADE REPLACEMENT

The hand shear uses disposable blades. Each blade has 8 cutting edges, as shown in **Fig. 5**. After a cutting edge cuts 400 meters of panel, cutting performance will fall. Then use another cutting edge. After all 8 cutting edges are used and worn, replace the blade.



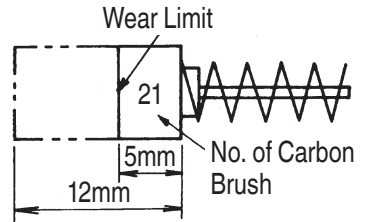
**Fig. 5**

## MAINTENANCE AND INSPECTION

1. Inspecting the blade  
Using a worn or chipped blade will put an excessive burden on the motor and affect work performance. Therefore, always use a well-cutting blade.

## English

2. Inspecting the mounting screws  
Regularly inspect all mounting screws and ensure that they are properly tightened. Should any of the screws be loose, retighten them immediately. Failure to do so could result in serious hazard.
3. Maintenance of the motor  
The motor unit winding is the very “heart” of the power tool. Exercise due care to ensure the winding does not become damaged and/or wet with oil or water.
4. Inspecting the carbon brushes (**Fig. 6**)  
The motor employs carbon brushes which are consumable parts. Since an excessively worn carbon brush can result in motor trouble, replace the carbon brush with a new one having the same carbon brush No. shown in the figure when it becomes worn to or near the “wear limit”. In addition, always keep carbon brushes clean and ensure that they slide freely within the brush holders.
5. Replacing carbon brushes  
Disassemble the brush cap with a screwdriver. The carbon brush can then be easily removed.
6. Service parts list



**Fig. 6**

## CAUTION

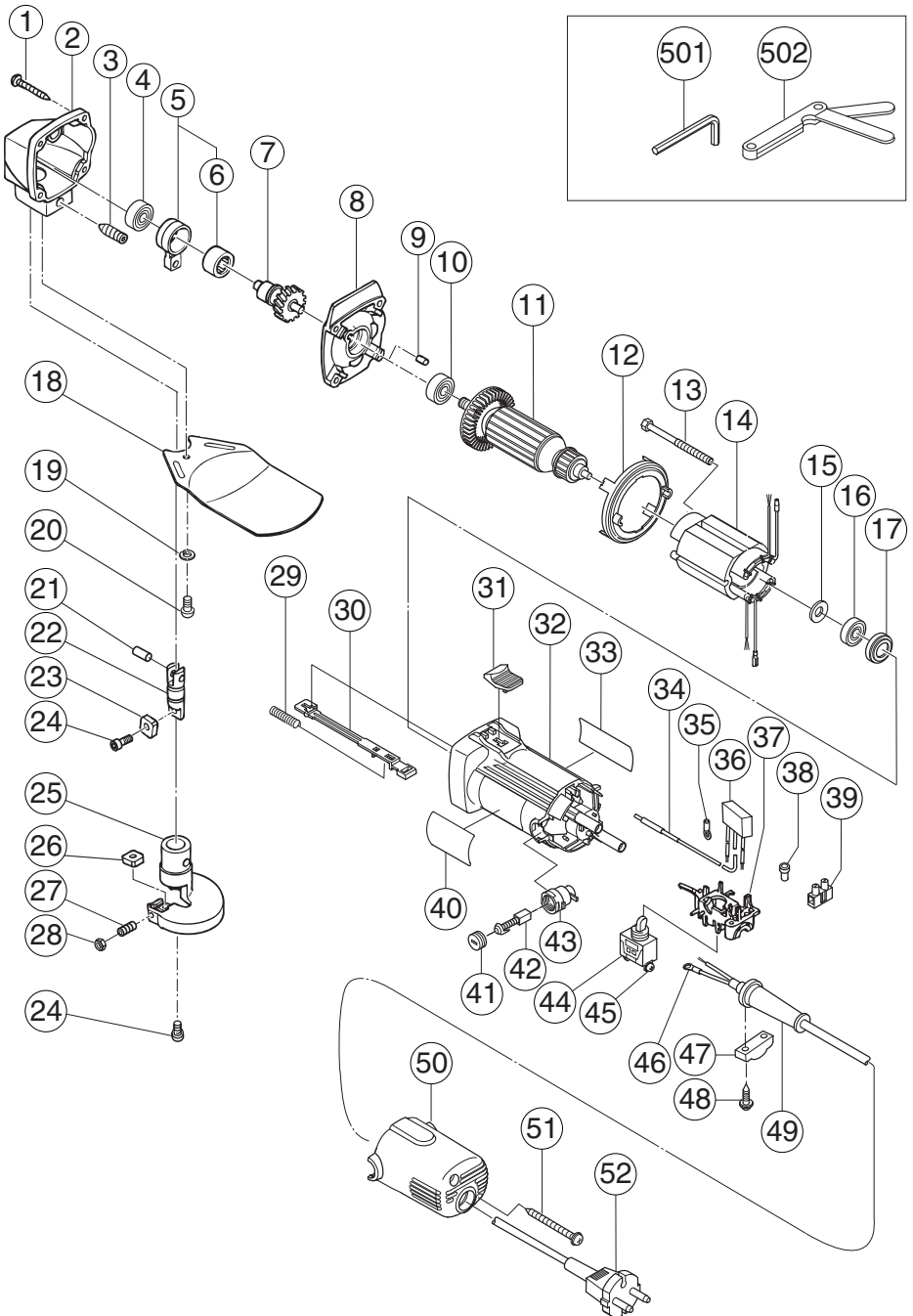
**Repair, modification and inspection of HiKOKI Power Tools must be carried out by a HiKOKI Authorized Service Center.**

**This Parts List will be helpful if presented with the tool to the HiKOKI Authorized Service Center when requesting repair or other maintenance.**

**In the operation and maintenance of power tools, the safety regulations and standards prescribed in each country must be observed.**

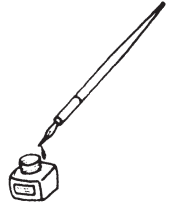


**SERVICE PARTS LIST**



# English

Item No.	Code No.	No. Used	Remarks	Item No.	Code No.	No. Used	Remarks
1	957-580	4	D5x30	35	311-741	1	
2	998-003	1		36	994-273	1	
3	998-008	1	M8x20	37	314-432	1	
4	608-VVM	1	608VVC2PS2L	38	959-140	1	
5	998-004	1	"6"	39	938-307	1	
6	993-163	1	M152112	40	_____	1	
7	998-006	1		41	936-551	2	
8	998-002	1		42	999-021	2	
9	931-701	1		43	313-777	2	
10	608-VVM	1	608VVC2PS2L	44	314-603	1	
11	360-622E	1	220V-230V	45	305-499	2	M3.5x6
12	306-840	1		46	980-063	1	
13	982-021	2	D4x70	47	937-631	1	
14	340-567E	1	220V-230V	48	984-750	2	D4x16
15	942-204	1		49	953-327	1	D8.8
16	626-VVM	1	626VVC2PS2L	50	314-433	1	
17	309-929	1		51	301-815	2	D4x45
18	998-010	1		52	500455Z	1	
19	949-454	1	M5	501	943-277	1	3MM
20	949-237	1	M5x15	502	949-128	1	
21	993-546	1	D6				
22	998-005	1					
23	998-000	1					
24	949-812	2	M4x10				
25	998-007	1					
26	998-001	1					
27	998-009	1	M4x14				
28	949-565	1	M4				
29	314-429	1					
30	314-427	1					
31	314-428	1					
32	314-438	1	"17"				
33	_____	1					
34	314-854	1					



服务中心  
工机商业(中国)有限公司  
上海市闵行区浦江工业园区三鲁路3585号7幢3楼

制造商  
工机控股株式会社  
日本国茨城县常陆那珂市武田1060番地

**Koki Holdings Co., Ltd.**

806  
编号：C99126726 N  
发行日期：2018年6月  
日本印刷