



Acer Monitor EI342CKR

LIFECYCLE EXTENSION GUIDE

acer

Contents

Table of Contents

Important Safety Notice	3
1. Exploded Diagram	4
2. Wiring connectivity diagram	6
3. Mechanical Instruction	7
4. Assembly and Disassembly SOP	8
5. Troubleshooting	14
6. FRU List	16

Safety Notice

Any person attempting to service this chassis must familiarize with the chassis and be aware of the necessary safety precautions to be used when serving electronic equipment containing high voltage



Important Safety Notice

Product Announcement:

This product is certificated to meet RoHS Directive and Lead-Free produced definition. Using approved critical components only is recommended when the situation to replace defective parts. Vender assumes no liability express or implied, arising out of any unauthorized modification of design or replacing non-RoHS parts. Service providers assume all liability.

Qualified Repairability:

Proper service and repair is important to the safe, reliable operation of all series products. The service providers recommended by vender should being aware of notices listed in this service manual in order to minimize the risk of personal injury when perform service procedures. Furthermore, the possible existed improper repairing method may damage equipment or products. It is recommended that service engineers should have repairing knowledge, experience, as well as appropriate product training per new model before performing the service procedures.

NOTICE:

! To avoid electrical shocks, the products should be connect to an authorized power cord, and turn off the master power switch each time before removing the AC power cord.

! To prevent the product away from water or exposed in extremely high humidity environment.

! To ensure the continued reliability of this product, use only original manufacturer's specified parts.

! To ensure following safety repairing behavior, put the replaced part on the components side of PWBA, not solder side.

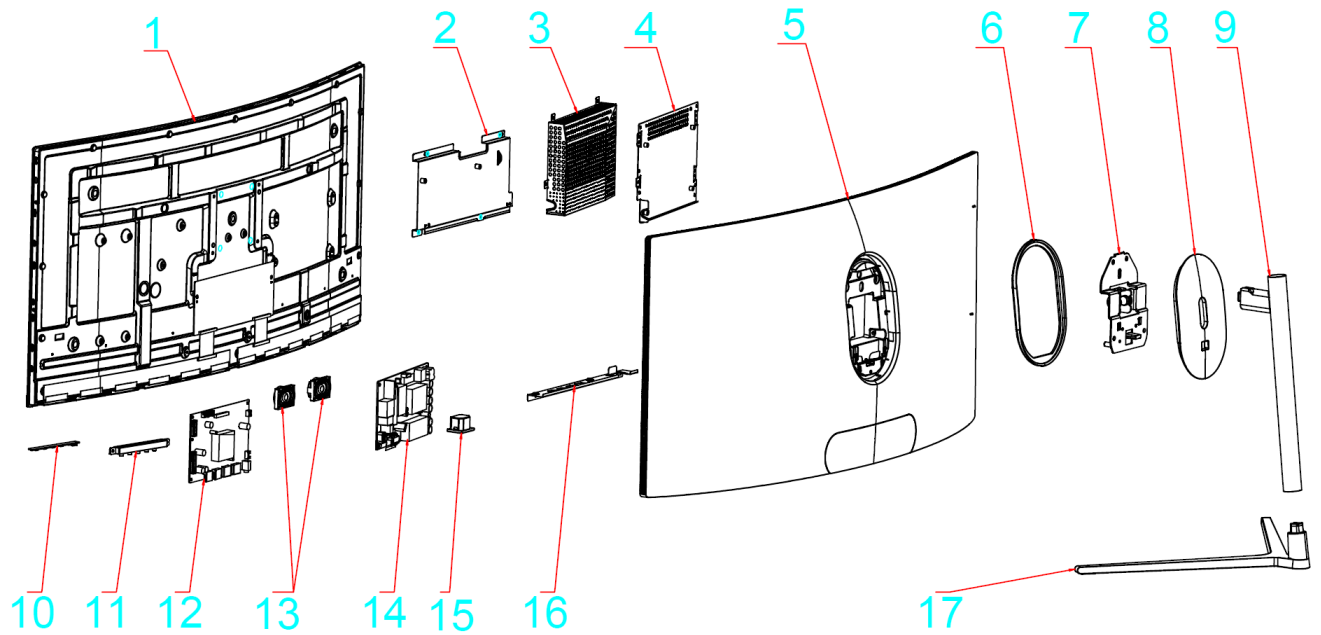
! To ensure using a proper screwdriver, follow the torque and force listed in assembly and disassembly procedures to screw and unscrew screws.

! Using Lead-Free solder to well mounted the parts.

! The fusion point of Lead-Free solder requested in the degree of 220°C.

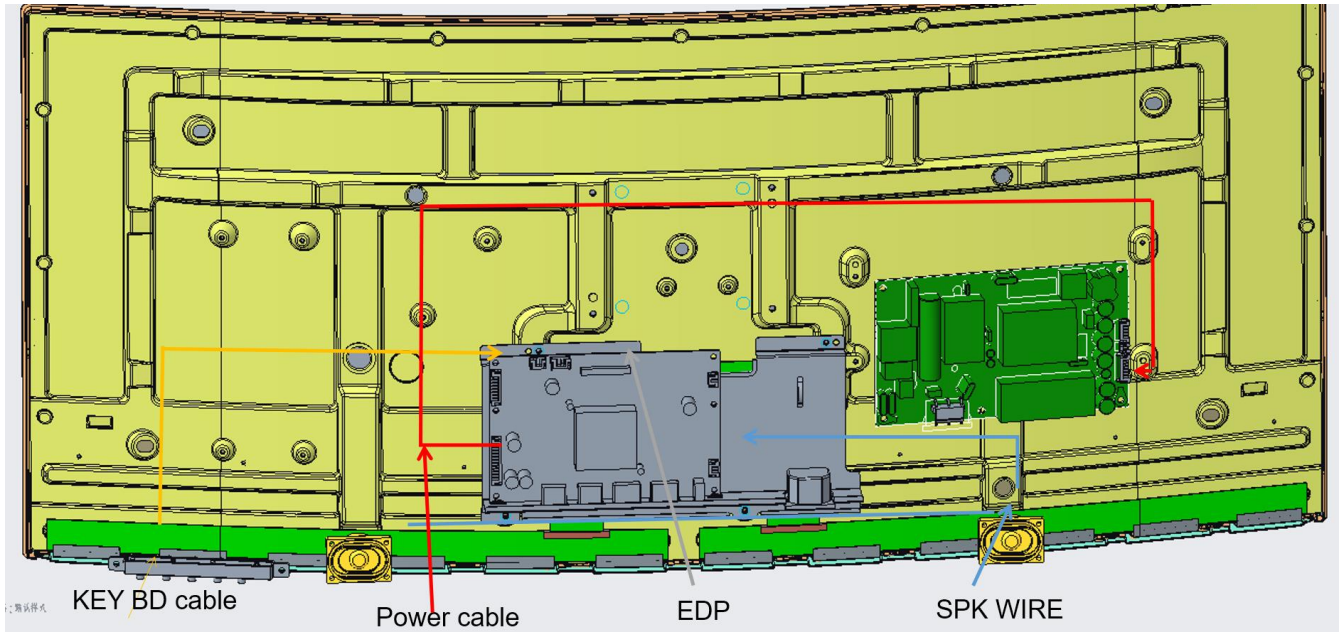
Exploded Diagram

1.1 Product Exploded Diagram



17	101.006.00711	Stand	Stand base/32C2/Black	1PCS	
16	101.022.00371	Terminal BD	Terminal BD34C1/SGCC/T=0.6mm/V3	1PCS	
15	104.042.00291	DC Socket	DC Socket VH5/3P/1015#18/DBV14/250mm/YS	1PCS	
14	104.020.00321	Power BD	Power BD AY078D-1SF30/72W12V60V720/VH52+MT	1PCS	
13	104.046.01191	Speaker	Speaker/2840/4Ω 3W/PH-4P/1007#24/L450R450/	1PCS	
12	104.001.02031	Main BD	AD BD J-W9CUHD-AV1/9835/2H+2NI+A+SK/IN12V	1PCS	
11	101.009.00021	KeyBD BKT	KeyBD BKT/34C1/ABS/Black	1PCS	
10	104.002.00191	Key BD	Key BD/4X4X1.7mm/5KEY Blue LED/BS	1PCS	
9	101.007.00581	Stan BKT	Stand BKT/32C1/Black	1PCS	
8	101.015.00531	Spindle Cover	Spindle decorative cover /34C1/ABS/Black	1PCS	
7	101.021.00571	Spindle ASSY	SpindleAssy/32C1/SGCC/T2.0mm/	1PCS	
6	101.012.00491	Lamp Shade	Lampe Shade/34C1/ABS/White	1PCS	
5	101.004.01701	RC	Rear Cover/34C1/ABS/Black/ACER	1PCS	
4	101.013.00961	Power BD BKT	Power BD BKT/32C1/SGCC/T=0.6mm/	1PCS	
3	101.027.00521	Power BD Shiel	Shield cover /32C/SGCC/0.8T/	1PCS	
2	101.013.01011	MB BKT	MB BKT/34C1/SGCC/T=0.6mm/V10	1PCS	
1	--	LCM Module	34INCH LCM Module	1PCS	
No.	PN	Description	Detail description	Qtyt	Remark

1. Wiring connectivity diagram



2. Mechanical Instruction

Tools Required

List the type and size of the tools that would typically can be used to disassemble the product to a point where components and materials requiring selective treatment can be removed.

Tool Description:

- working table
- Screw-driver
- Knife
- glove
- cleaning cloth
- ESD protection

3. Assembly and Disassembly SOP

EI342CKR

4.1 Disassembly Procedures

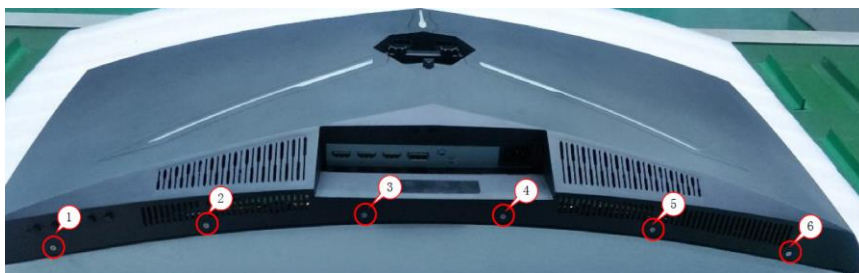
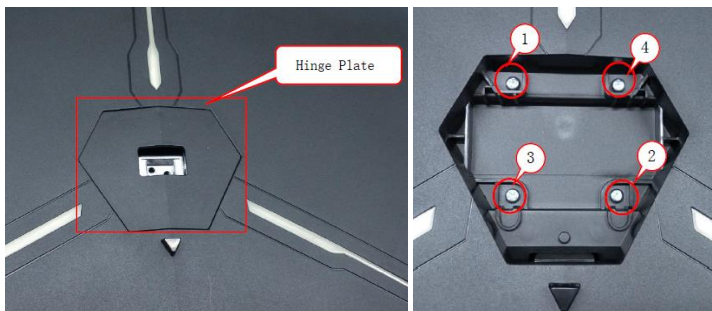
Preparation before disassemble

1. Clean the room for disassemble
2. Identify the area for monitor
3. Check the position that the monitors be placed and the quantity of the monitor ;prepare the area for material flow; according to the actual condition plan the disassemble layout
4. Prepare the implement, equipment, materials as bellow:
 - 1) working table
 - 2) Screw-driver
 - 3) knife
 - 4) glove
 - 5) cleaning cloth
 - 6) ESD protection

S1

Disassemble the RC, stand

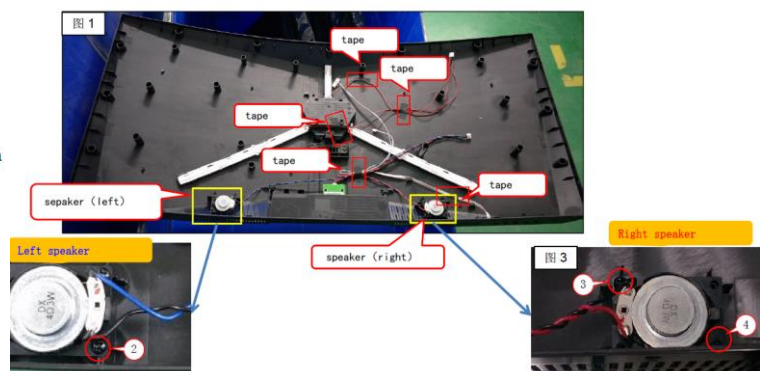
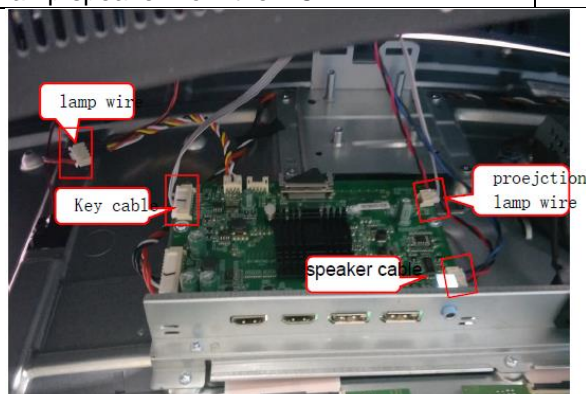
Disassemble base and hinge cover from the RC.
Unlock RC screws. Disassemble RC from onitor.



S2

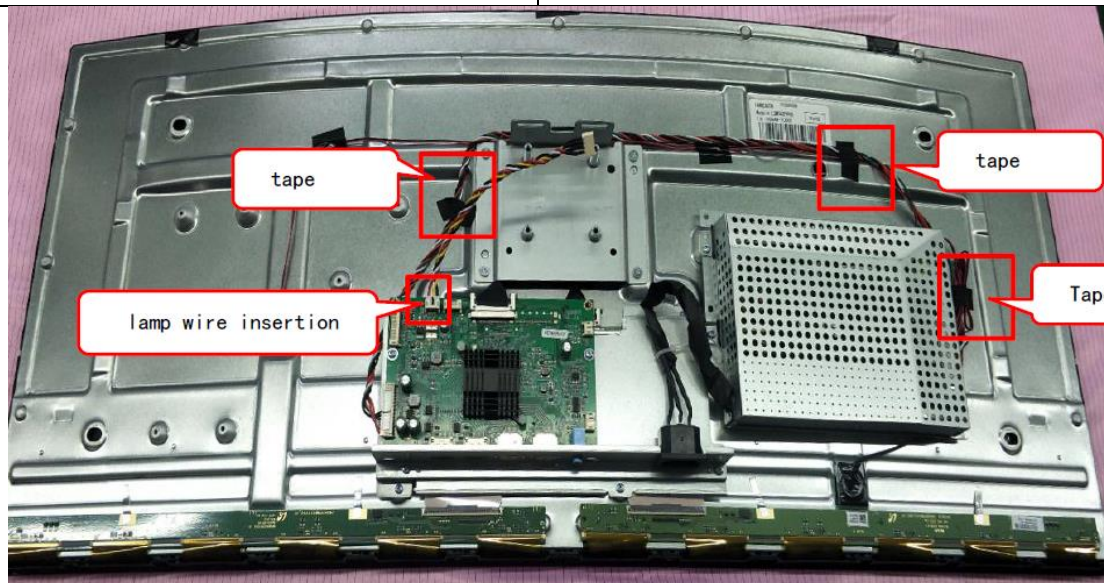
Disassemble the cable from the connector , also disassemble the Key BD &,projection lamp speaker from the RC.

Disassemble the keyBD wire, lamp wire, speaker cable & Projection lamp wire from the BD connector.
Unlock the screw and disassemble the key BD & speaker ,projection lamp from RC



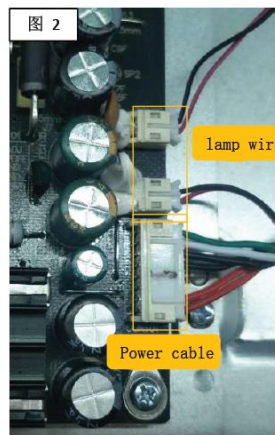
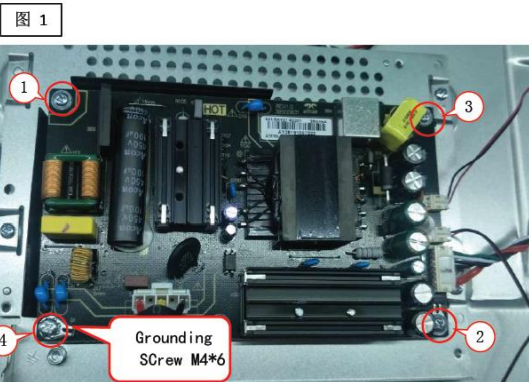
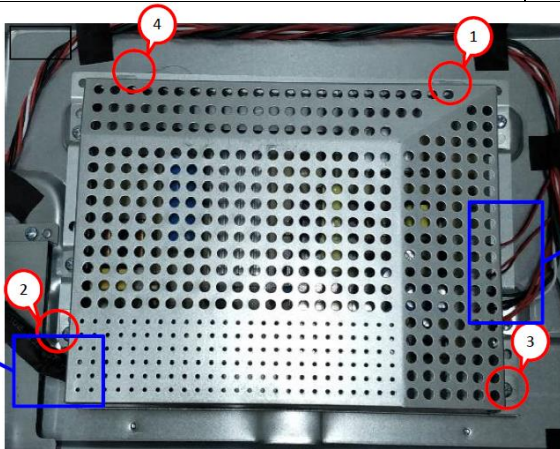
S3
Disassemble the cable from the MB

Remove the tape and loosen the cable.
Disassemble the LVDS cable, , Key BD cable , speaker cable and lamp power cable etc from the MB



S4
Disassemble the Power BD shield cover and Power BD from the BKT

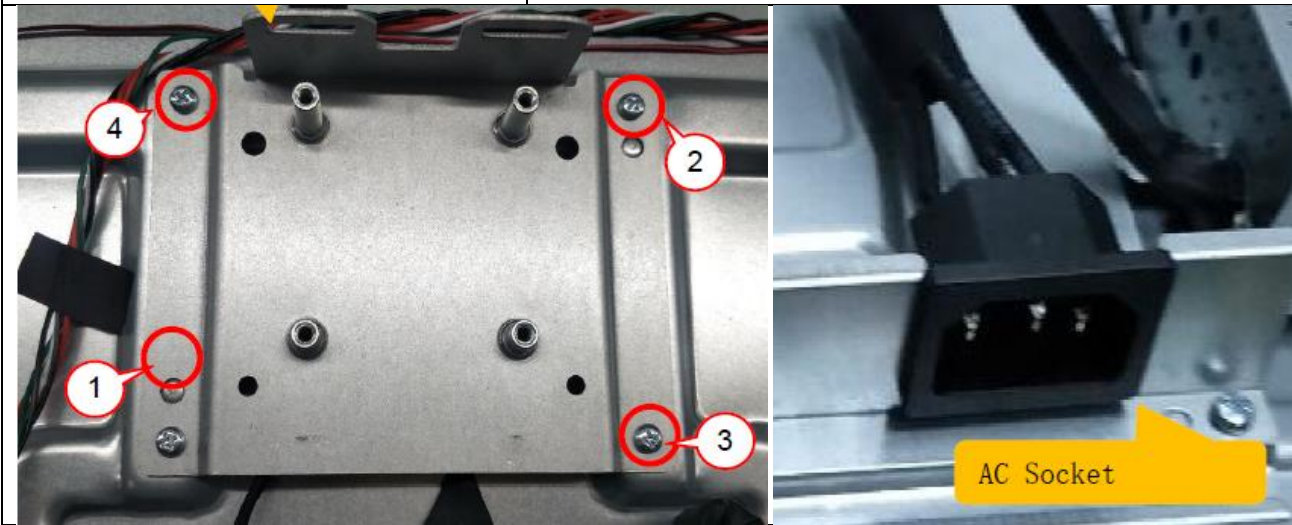
Unlock the screw and remove the power BD shield over .
Disassemble the cable & screw from the Power BD and take it off from the power BD BKT.



S5

Disassemble the hinge base & AC socket from the BKT

Remove the hinge base from the BKT after screw dismantle, then pull off the AC socket from BKT.



4.2 Assembly Procedures

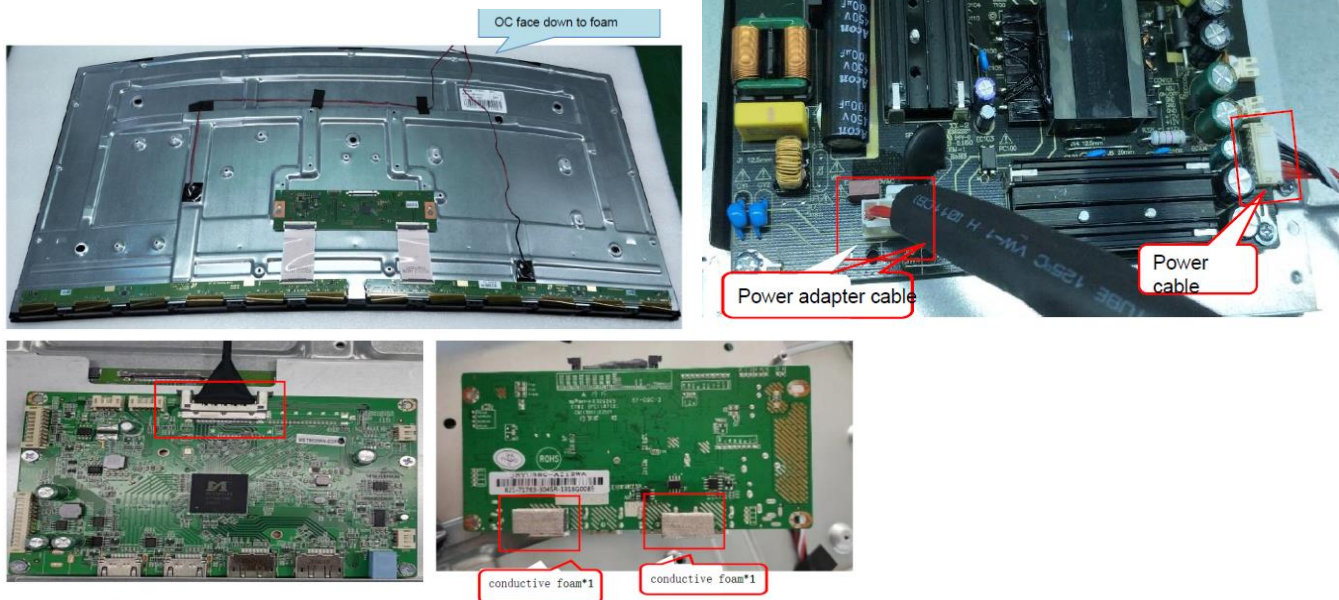
Preparation before assemble:

1. Clean the room for work
2. Identify the area for material
3. Prepare the implement, equipment, materials as bellow:
 - 1) working table
 - 2) Screw-driver
 - 3) Knife
 - 4) glove
 - 5) cleaning cloth

ESD protection

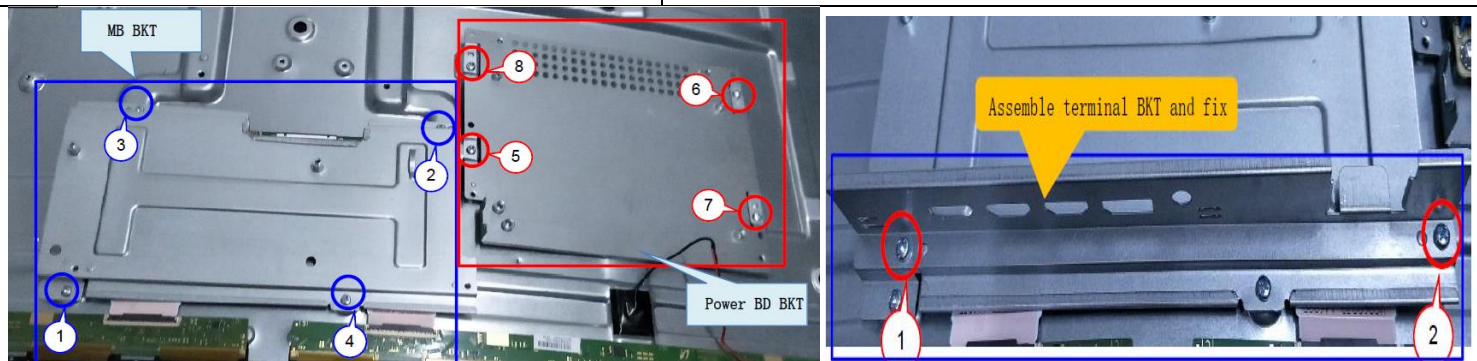
S1
Assembly preparation and MB/Power BD processing

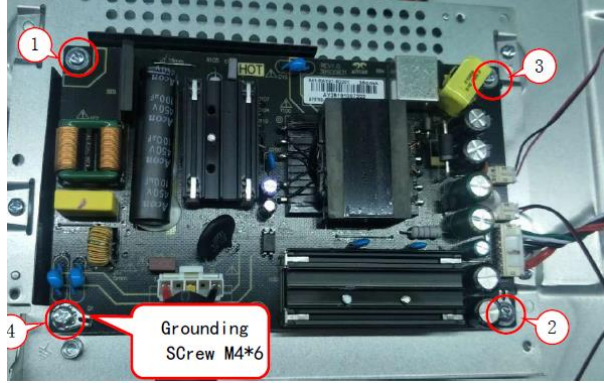
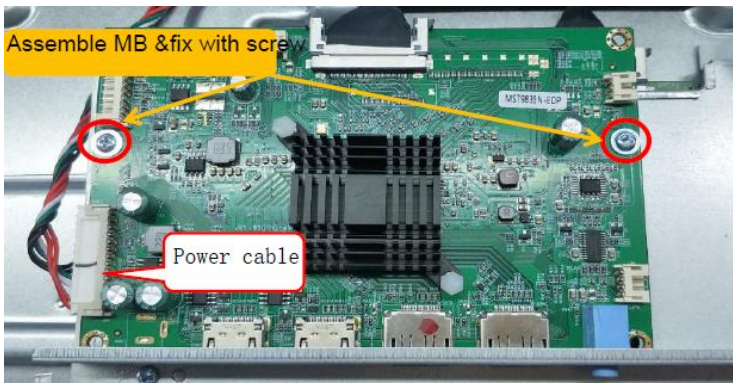
Take a LCM module, then insert the LVDS cable and adhesive the conductive foam on the MB, and cable assemble with power BD



S2
Assemble the MB & Power BD BKT, terminal BKT and then assemble the MB & Power BD

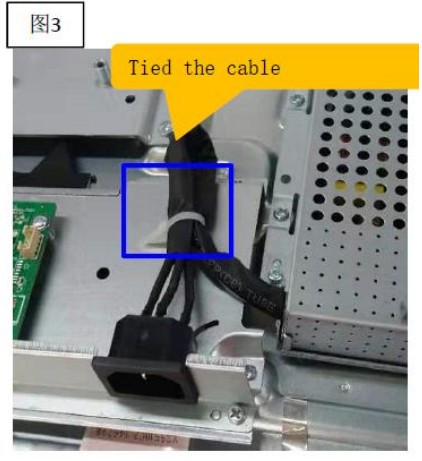
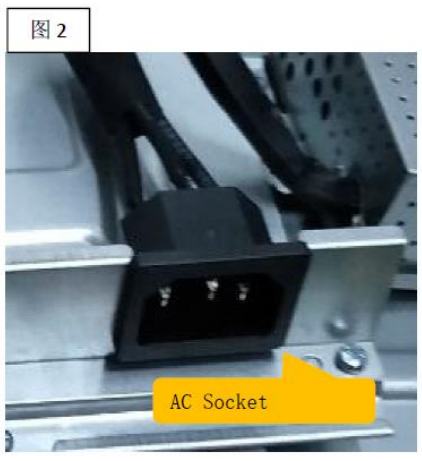
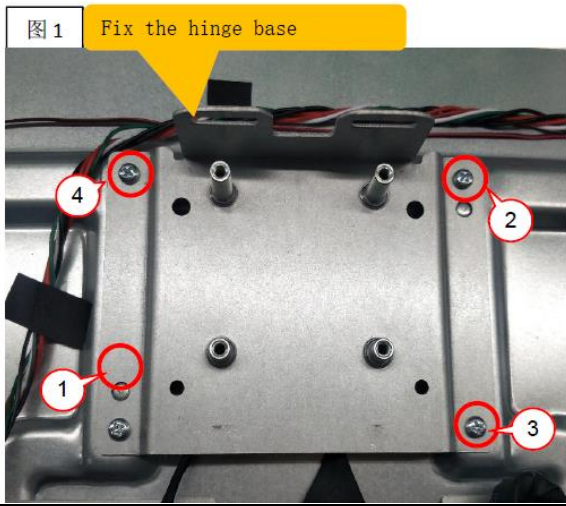
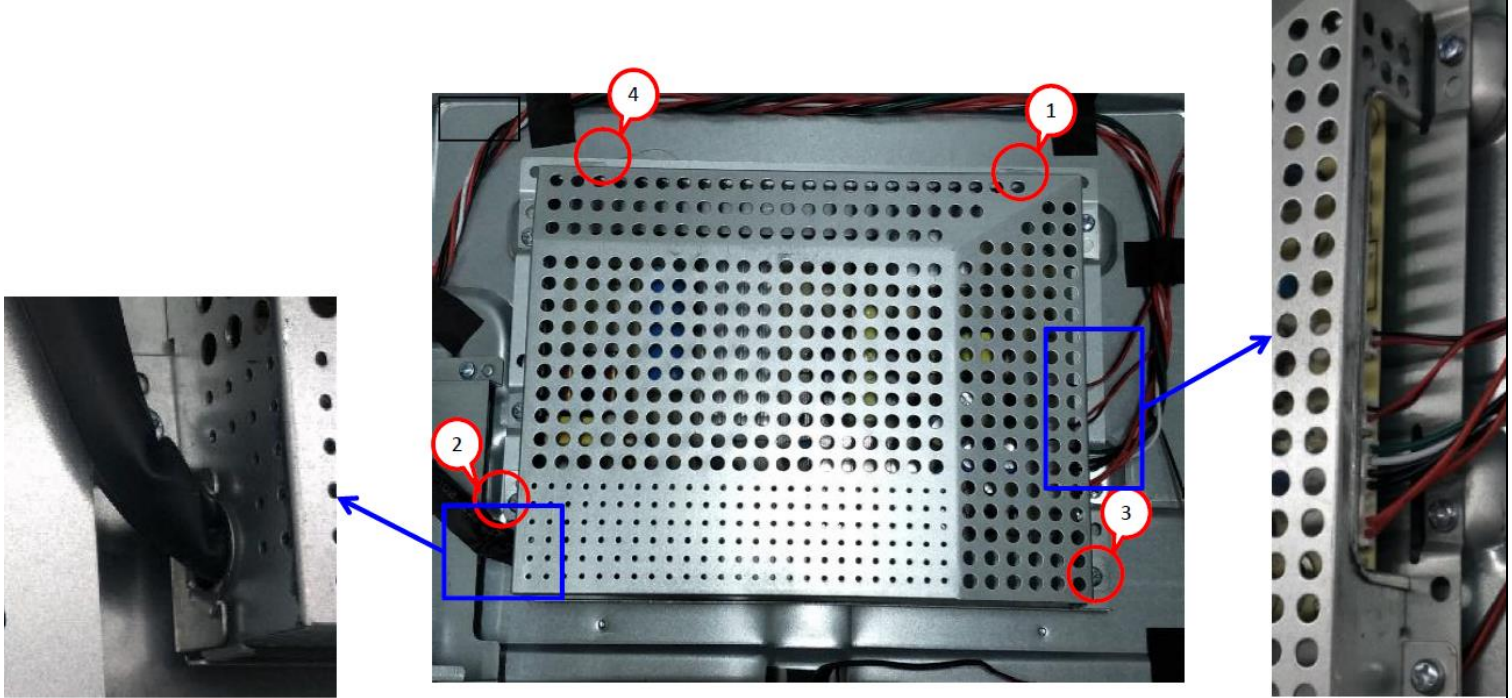
Assemble the MB & power BD BKT and terminal BKT, then fix them with screw; also assemble the MB and power BD with the screw.





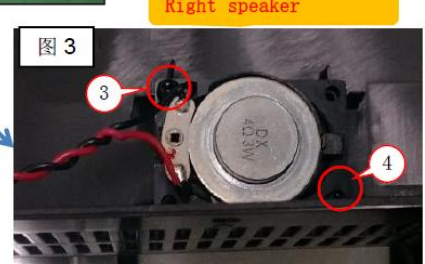
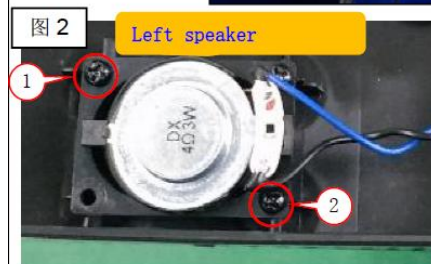
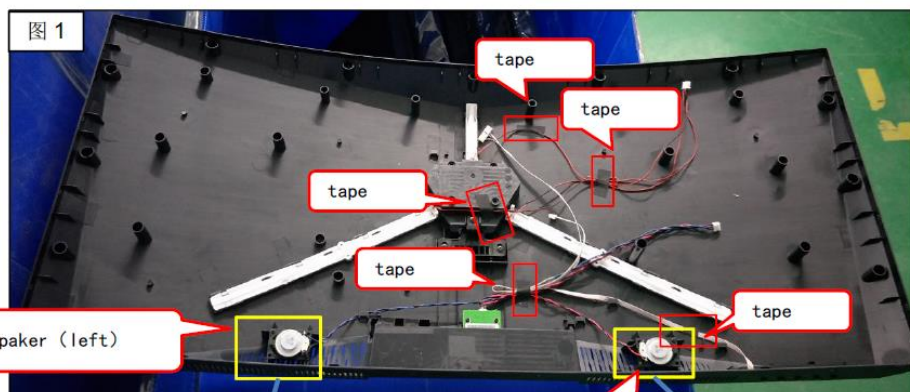
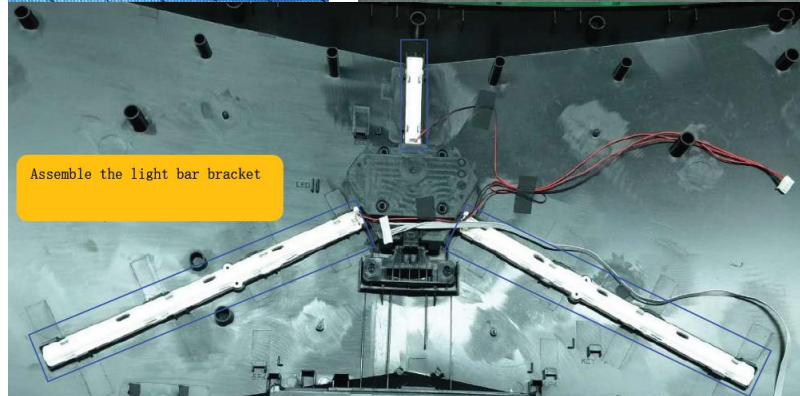
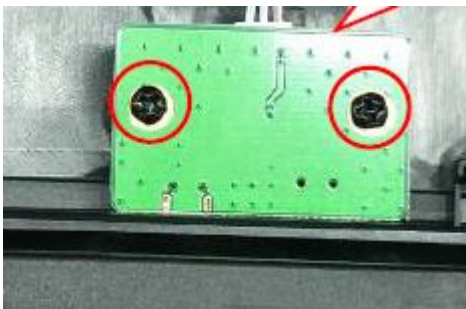
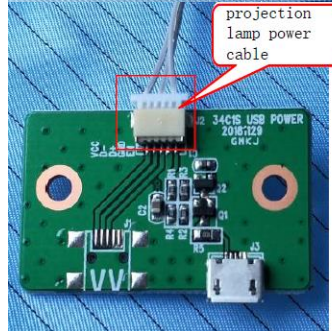
S3
Assemble the Power BD shielding cover, hinge base and the AC socket

Assemble the power BD shielding cover with screwing, need take care of the cable to avoid interference.
Fix the hinge base and insert the AC socket into bracket, the tied the cable.



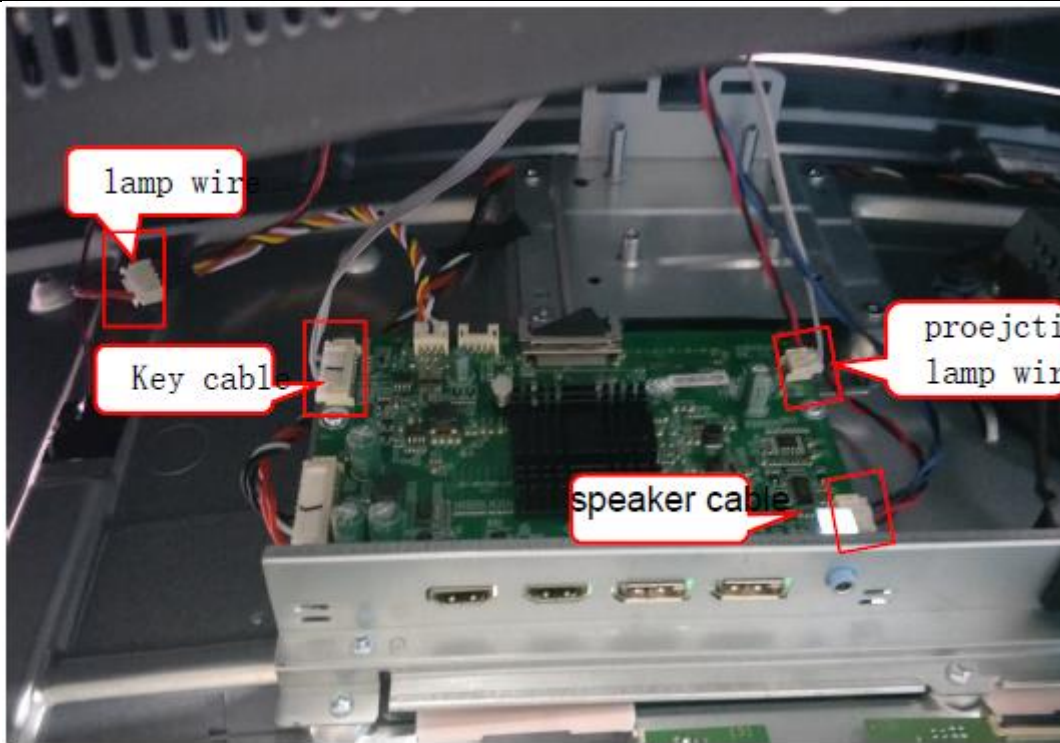
S4
Cable assemble and rear cover assembled with the light bar, speaker..etc.

1. Assemble the Key BD and projection lamp power BD on the RC
2. Assemble the light bar & bracket on the RC
3. Assemble the left & right speaker on the RC with screw.



S5
Insert the cable into connector the MB and then assemble the RC

Insert the lamp wire, key BD cable, speaker cable and projection lamp wire, then assemble the cover. Then fix the RC with screw.

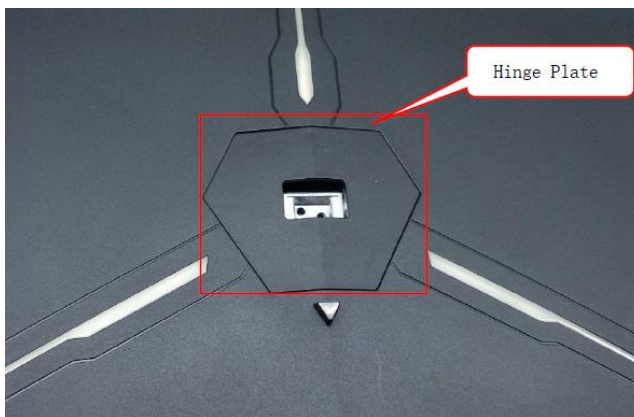
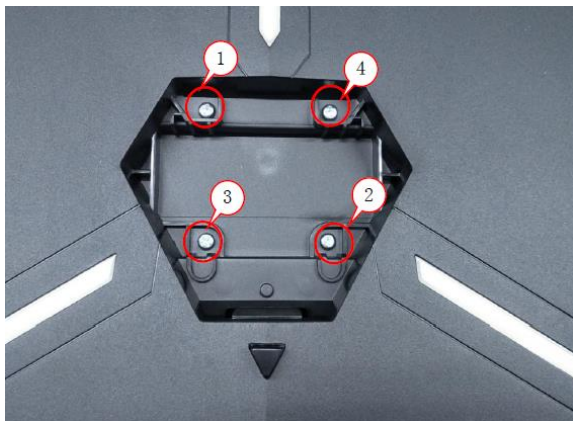


Rear cover assy



S5
Assemble the hinge bracket with screw, then insert the hinge plate..

Assemble the hinge bracket and the cover, insert the projection lamp into the RC.



4. Troubleshooting

Problems	Current Status	Remedy
No Picture	Blue	Using OSD, adjust brightness and contrast to maximum or reset to their default settings.
	Blinking Blue	Check if signal cable is properly connected, which can be determined by plugging and unplugging the cable. Check if the PC is functioning properly or in the Hibernate mode. To wake the PC from Sleep mode, you can click the mouse or tap any key on the keyboard.
	LED OFF	Check the power switch. Check if AC power cord is properly connected to the monitor.

5. FRU List

This chapter gives you the FRU (Field Replaceable Unit) listing in global configurations of ACER B277. Refer to this chapter whenever ordering for parts to repair or for RMA (Return Merchandise Authorization).

Please note that WHEN ORDERING FRU PARTS, you should check the most up-to-date information available on your regional web or channel. For whatever reasons a part number change is made, it will not be noted on the printed Service Guide. For AUTHORIZED SERVICE PROVIDERS, your office may have a DIFFERENT part number code from those given in the FRU list of this printed Service Guide. You MUST use the local FRU list provided by your regional office to order FRU parts for repair and service of customer machines

NOTE: To scrap or to return the defective parts, you should follow the local government ordinance or regulations on how to dispose it properly, or follow the rules set by your regional office on how to return it.

Category	ACER DESCRIPTION	Description	PART NO.
BOARD	MAIN BOARD 2H+2DP+SPK+AUDIO OUT		55.TLPMC.001
BOARD	FUNCTION KEY BOARD		55.THJMC.002
BOARD	POWER BOARD		55.TJBMC.003
CABLE	CABLE 150mm - PANEL TO MAIN BOARD		50.TLPMC.001
CABLE	FFC CABLE 600MM - FUNCTION KEY BOARD TO MAIN BOARD		50.TLPMC.002
CABLE	CABLE 700mm - POWER BOARD TO MAIN BOARD		50.TJBMC.002
CABLE	AC IN CABLE 250mm W/ SOCKET		50.TLPMC.003
CABLE	HDMI CABLE 2.0 1.5M		50.THJMC.003
CABLE	DP CABLE 1.5M		50.TLPMC.004
CABLE	DP CABLE 1.5M		50.TLPMC.004
POWER CORD	POWER CORD 1500mm 10A 250V EU		27.TGWMC.001
POWER CORD	POWER CORD 1500mm 10A 250V SWISS		27.TFUMC.003
CASE/COVER/BRACKET ASSEMBLY	BACK COVER ASSY W		60.TLPMC.001
CASE/COVER/BRACKET ASSEMBLY	BACK DECORATION COVER		60.TLPMC.002
CASE/COVER/BRACKET ASSEMBLY	IO BRACKET ASSY		33.TLPMC.001
CASE/COVER/BRACKET ASSEMBLY	HINGE ASSY W/SHAFT+LOCK+DECORATION COVER+PRESSURE SPRING+SCREW		33.TJBMC.005
CASE/COVER/BRACKET ASSEMBLY	HINGE PLATE		33.TJBMC.004
CASE/COVER/BRACKET ASSEMBLY	POWER BOARD SHIELDING ASSY		33.TJBMC.001
CASE/COVER/BRACKET ASSEMBLY	POWER BOARD BRACKET		33.TJBMC.002
CASE/COVER/BRACKET ASSEMBLY	NECK ASSY		60.TJBMC.002
CASE/COVER/BRACKET	NECK ASSY		60.TLPMC.004

ASSEMBLY			
CASE/COVER/BRACKET ASSEMBLY	MAIN BOARD SHIELDING ASSY		33.TLPMC.002
FAN SINK/SPEAK/EARPHONE/RTC	SPEAKER		23.TLPMC.001
FAN SINK/SPEAK/EARPHONE/RTC	SPEAKER		23.TLPMC.001
FAN SINK/SPEAK/EARPHONE/RTC	SPEAKER		23.TLPMC.001
LCD	LED LCD Panel HUBEI CENTURY 34' WQHD None Glare 810.001.00131 LF 400nit 14ms 4000:1 AUO OC (AUO OC)		KL.3400N.003